

Figure S1. Purification of protoxins and activated toxins from Cry1Ab. Molecular masses are indicated in kDa. SDS-PAGE electrophoresis stained with Coomassie blue.

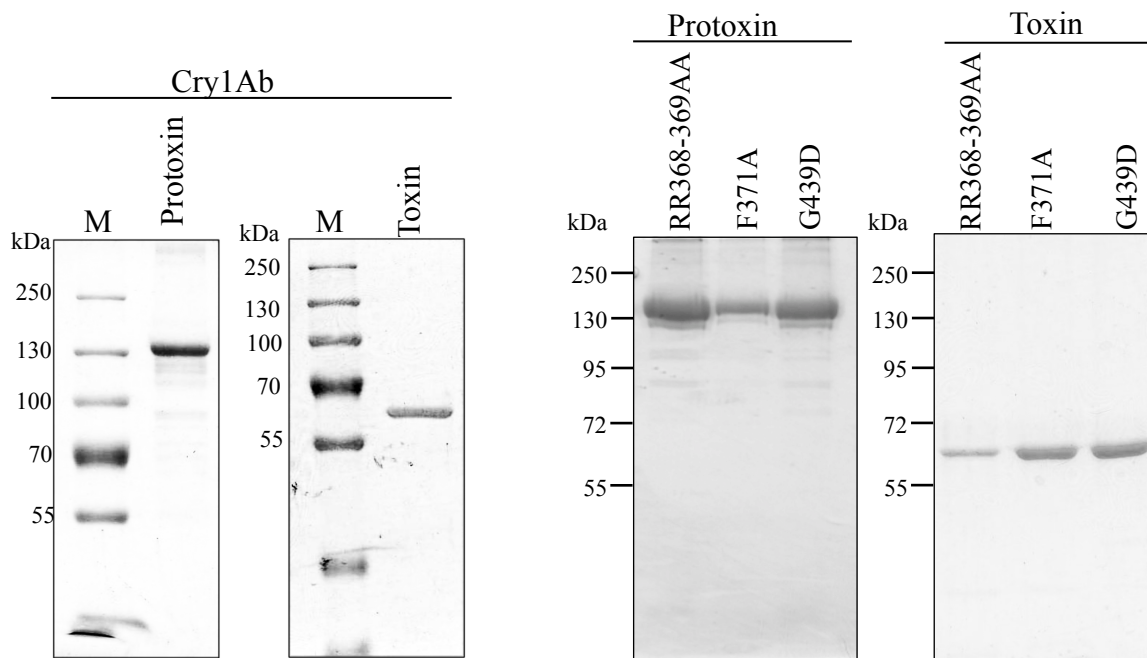


Figure S2. Western blot analysis of Cry1Ab protoxin, Cry1Ab activated toxin and C-terminal region using anti-Cry1Ab-toxin or anti-C-terminal antibodies

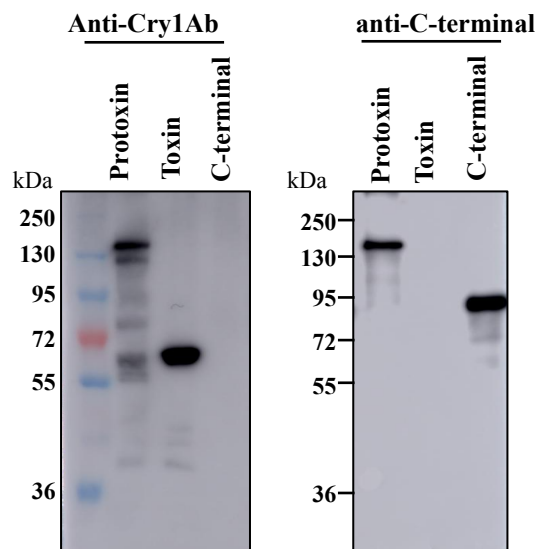


Figure S3. Purification of recombinant CAD (CR7-12 and CR12), ALP and APN expressed in *E. coli* cells. Molecular masses are indicated in kDa. Panel A, SDS-PAGE stained with Coomassie blue. Panel B, western blot analysis using anti-CAD, anti-APN and anti-ALP antibodies.

