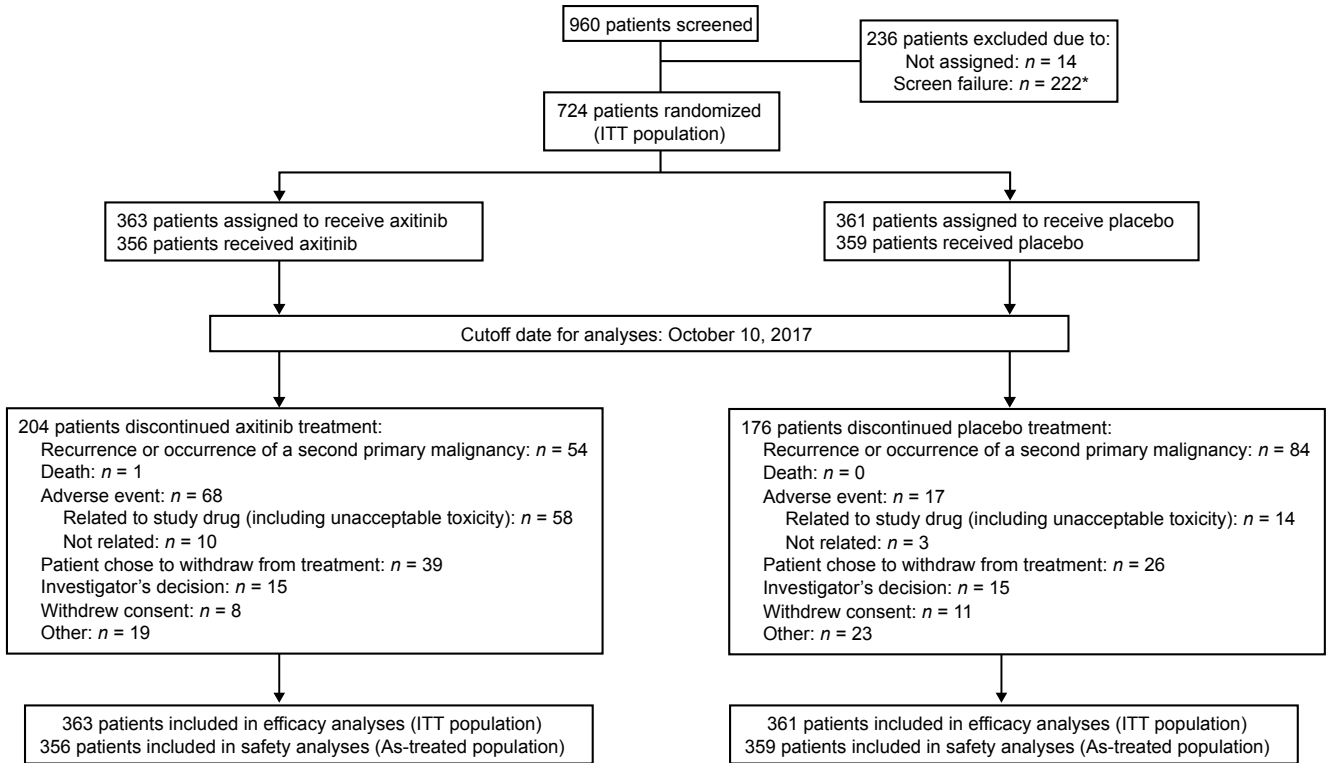


Supplementary Figure S1. Patient disposition (CONSORT diagram).



*The most common reasons were evidence of macroscopic residual disease or metastatic disease, and not having adequate organ function.

As-treated population, all patients who received at least one dose of study drug as reported in patient diaries. ITT population, intent-to-treat population includes all patients who were randomized, regardless of whether they received study drug.