

# The use of machine learning methods to identify distinct clusters of clinical phenotypes and survival patterns among chronic graft-versus-host-disease (cGVHD) patients

**339** Patients with incident cGVHD

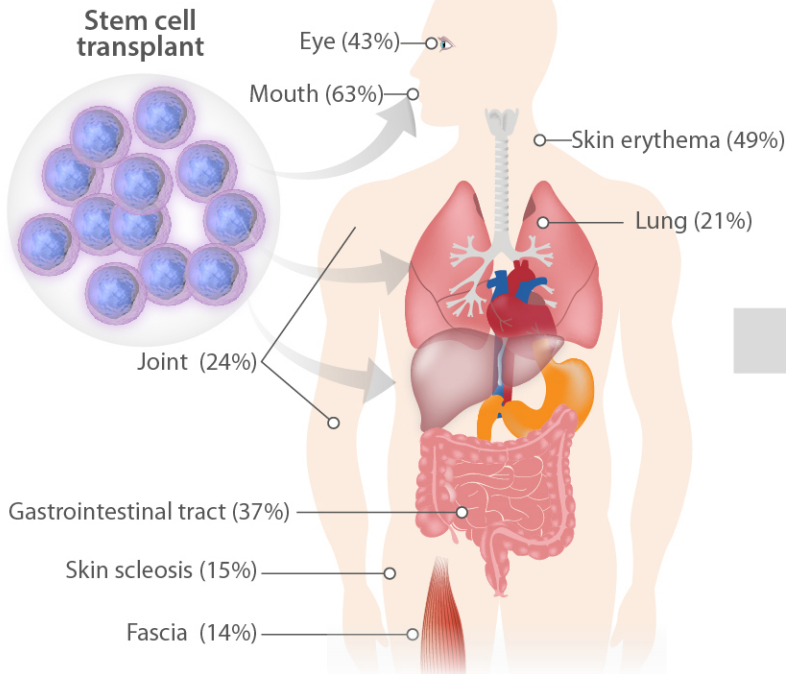
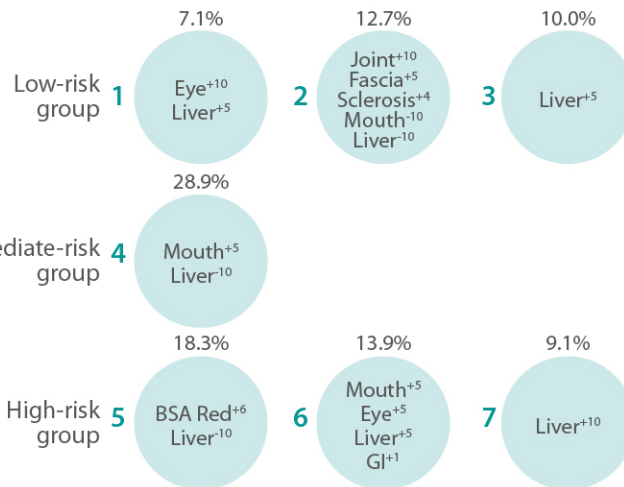


## Machine learning

Computational analysis of %

Erythema  
Eye  
Liver  
Gastrointestinal  
Fascia  
Joint  
Mouth  
Sclerosis

7 unique patient clusters with differential clinical phenotype and risks



NIH severity score



Time from cGVHD to death

High-risk vs low-risk HR, 2.24% [95%CI 1.36-3.68] p=0.002  
 Intermediate-risk vs low-risk HR, 1.70% [95%CI 0.99-2.94] p=0.055