

Evaluation of the Association between Gestational Diabetes Mellitus at First Pregnancy and Cancer within 10 Years Postpartum Using National Health Insurance Data in South Korea

Kyu-Tae Han ¹, Geum Joon Cho ² and Eui Hyeok Kim ^{3,*}

Supplementary

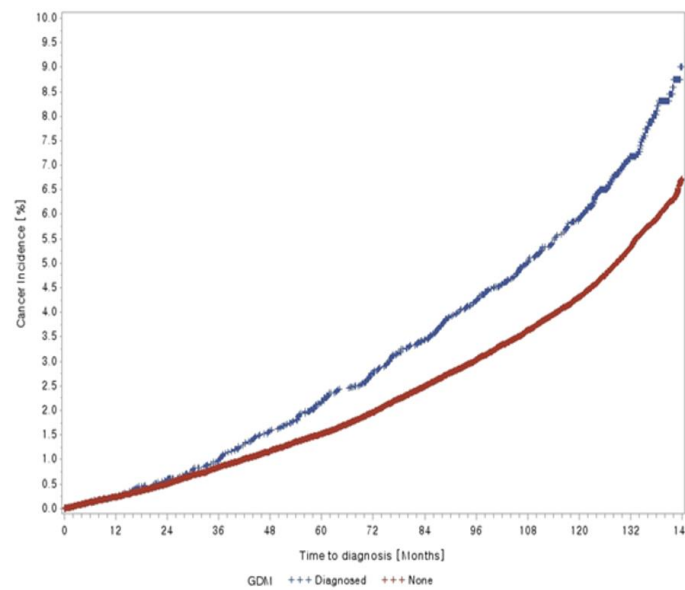


Figure S1. Kaplan-Meier Curves for incidence of total cancer by GDM. † *p*-value Log-rank test < 0.0001.

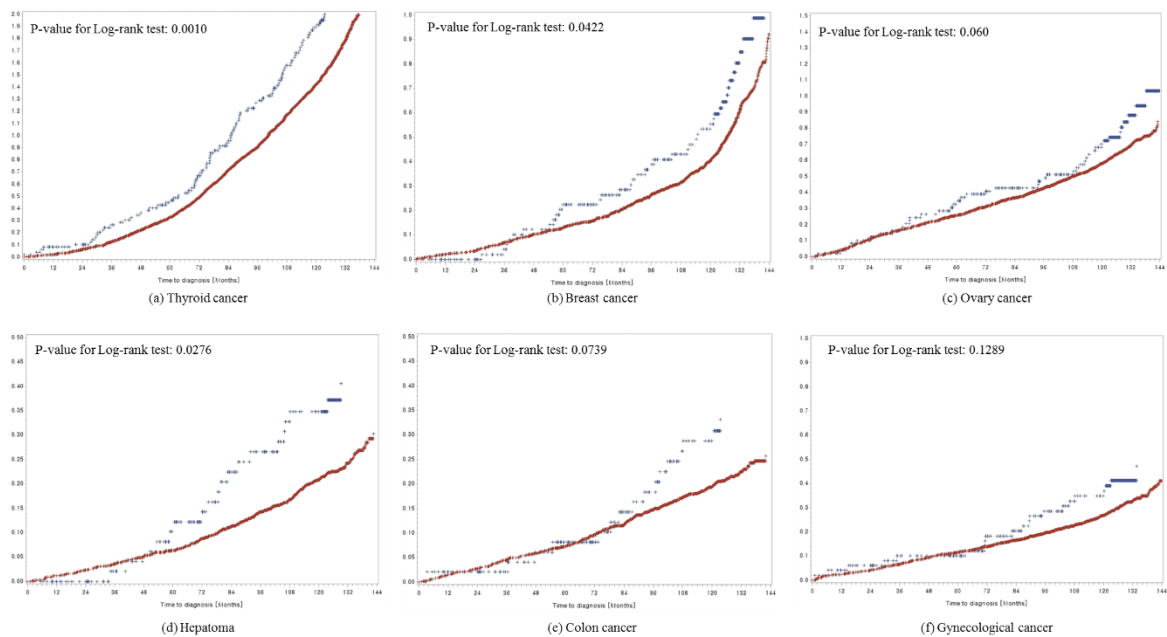


Figure S2. Kaplan-Meier Curves for each cancer by GDM.