

Supplementary Materials: Unfavorable Mortality-To-Incidence Ratio of Lung Cancer is Associated with Health Care Disparity

Cheng-Yu Hua, Kwong-Kwok Au, Sung-Lang Chen, Shao-Chuan Wang, Chi-Yu Liao, Hui-Hsiang Hsu, Wen-Wei Sung *and Yao-Chen Wang *

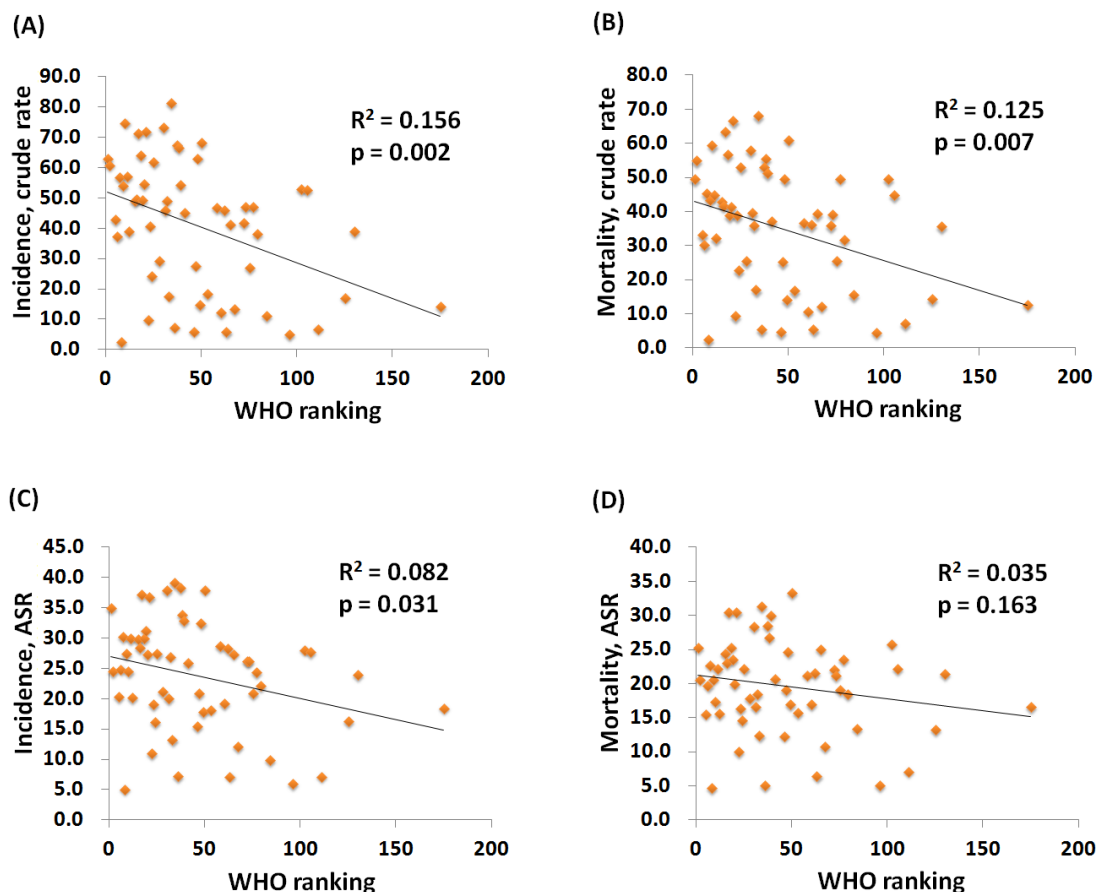


Figure S1. Countries with good World Health Organization rankings have high crude rates of (A) incidence, and (B) mortality, as well as high age-standardized rates (ASR) of (C) incidence. The association between World Health Organization rankings and the ASR of (D) mortality was not statistically significant.

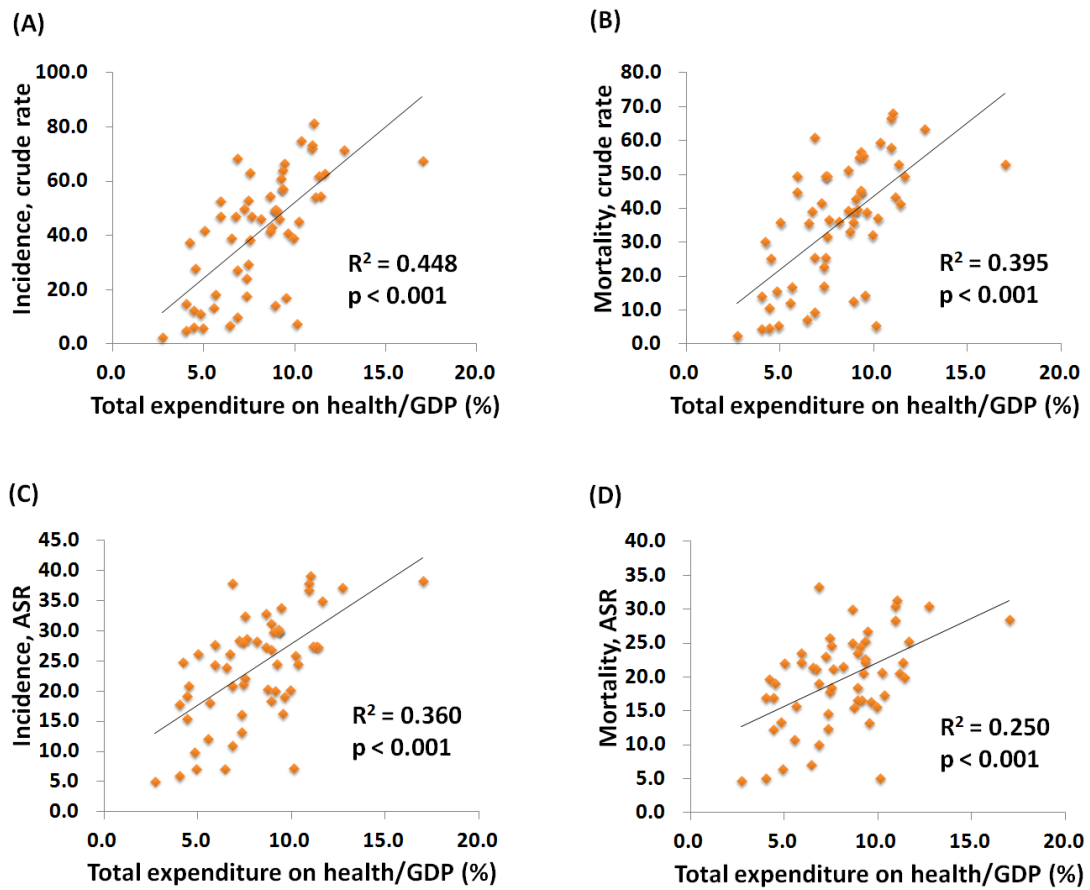


Figure S2. Countries with good World Health Organization rankings have high crude rates of (A) incidence, and (B) mortality, as well as high age-standardized rates (ASR) of (C) incidence, and (D) mortality.



© 2018 by the authors. Submitted for possible open access publication under the terms and conditions of the Creative Commons Attribution (CC BY) license (<http://creativecommons.org/licenses/by/4.0/>).