

Supporting Information

Examination of Endogenous Peptides in *Medicago truncatula* using Mass Spectrometry Imaging

Erin Gemperline¹, Caitlin Keller¹, Junko Maeda², Dhileepkumar Jayaraman², Michael Sussman³,
Jean-Michel Ané², Lingjun Li^{1,4,*}

¹Department of Chemistry, University of Wisconsin - Madison, Madison, WI 53706, USA.

²Department of Agronomy, University of Wisconsin - Madison, Madison, WI 53706, USA.

³Department of Biochemistry, University of Wisconsin - Madison, Madison, WI 53706, USA

⁴School of Pharmacy, University of Wisconsin - Madison, Madison, WI 53705, USA.

*Address reprint requests to:

Dr. Lingjun Li, School of Pharmacy & Department of Chemistry, University of Wisconsin, 777
Highland Ave, Madison, WI 53705.

E-mail: lingjun.li@wisc.edu. Phone: (608)265-8491, Fax: (608)262-5345.

Contents

Figure S1: Photographs comparing DHB and CHCA matrix application on root nodule slices

Figure S2: Annotated MS/MS spectra from *de novo* sequencing.

Figure S3: Annotated MS/MS spectra of unique peptides.

Table S1: *m/z* Values Detected in Medicago Mature Nodules (DHB matrix)

Table S2: *m/z* Values Detected in Medicago Seedlings (DHB matrix)

Table S3: *m/z* Values Detected in Medicago Mature Nodules (CHCA matrix)

Table S4: *m/z* Values Detected in Medicago Seedlings (CHCA matrix)

Figure S1: Photographs comparing DHB and CHCA matrix application on root nodule slices

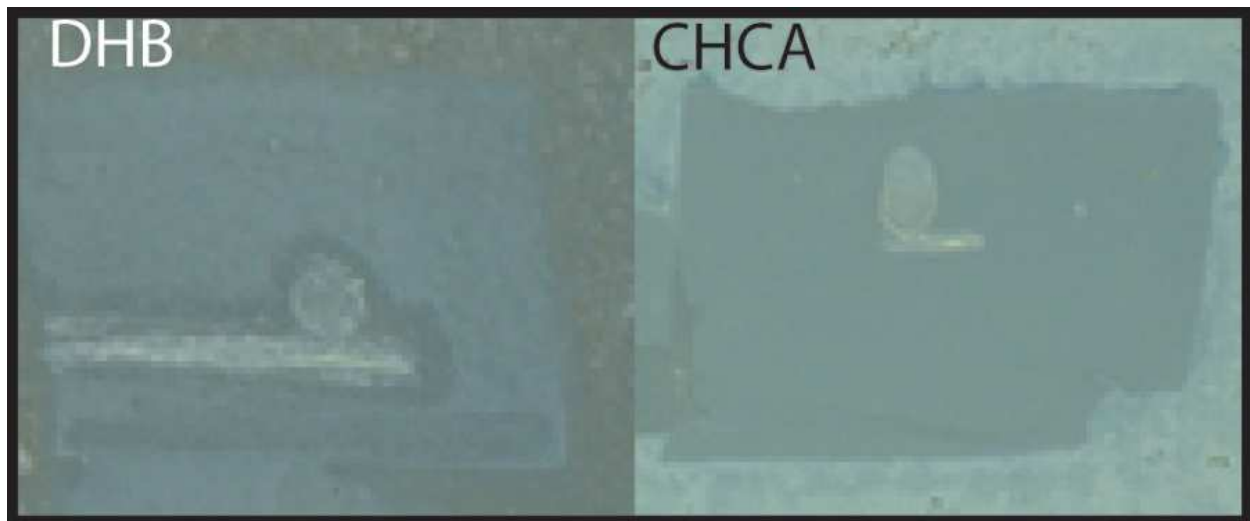
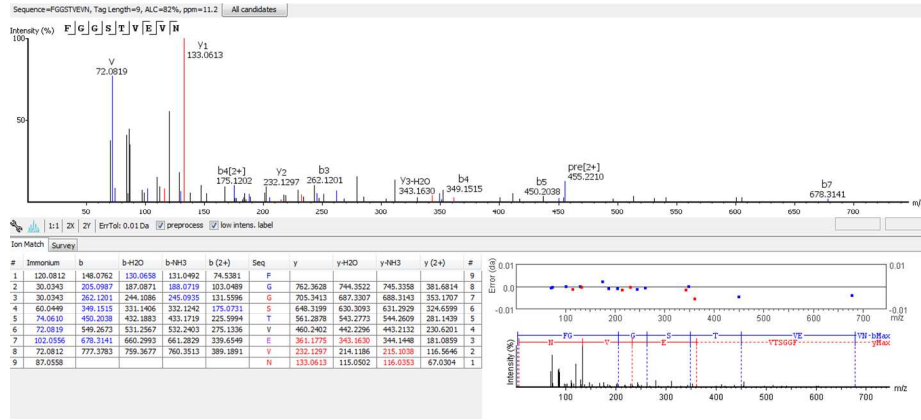
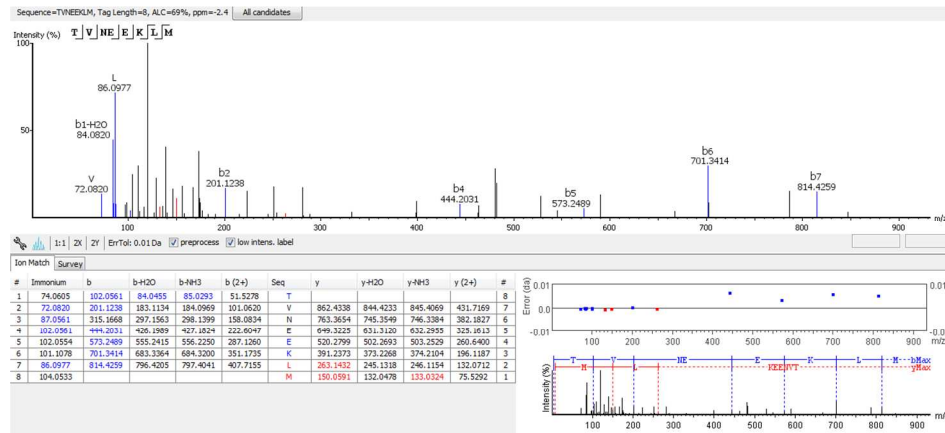


Figure S2: Annotated MS/MS spectra from *de novo* sequencing.

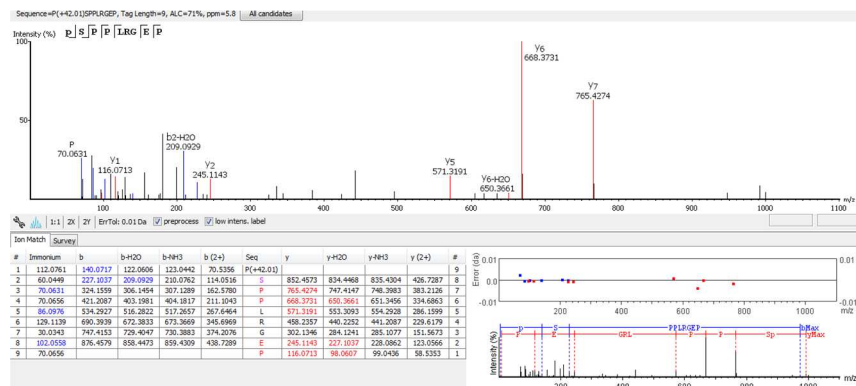
MW 908.4238 LC-MS/MS ALC=82%



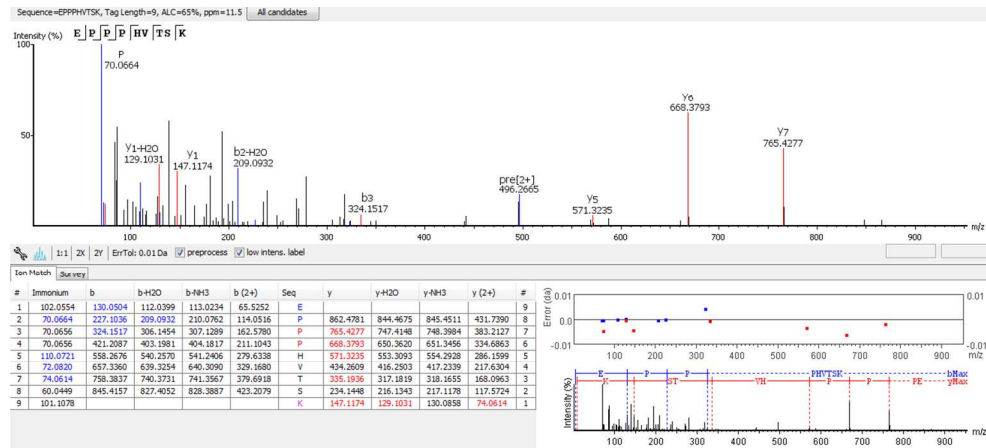
MW 962.4813 LC-MS/MS ALC=69%



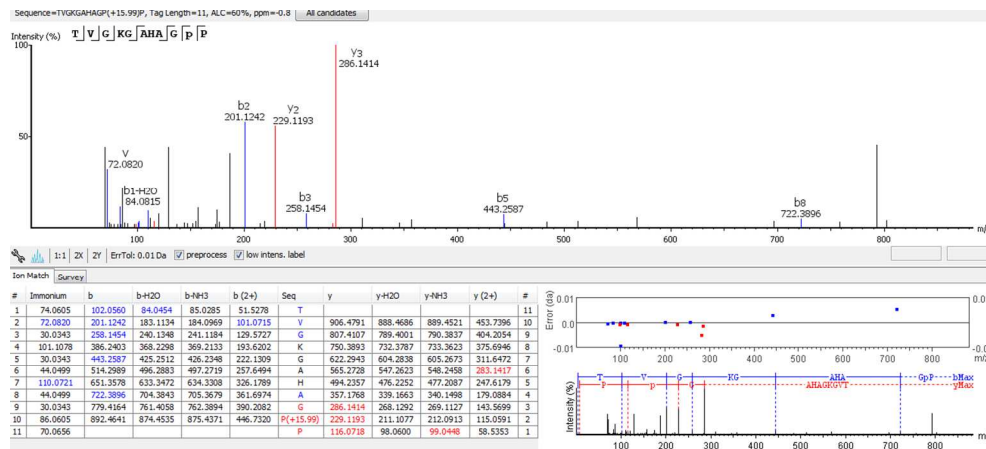
MW 990.5163 LC-MS/MS ALC=71%



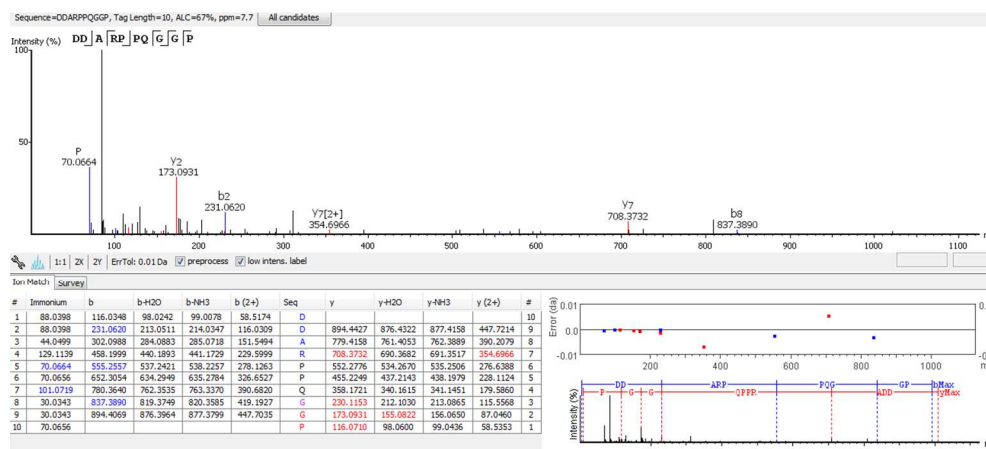
MW 990.5163 LC-MS/MS ALC=65%



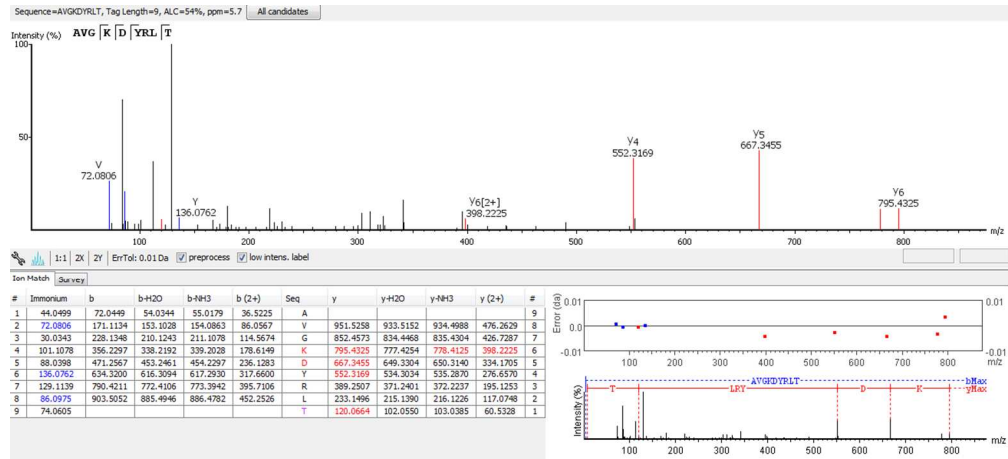
MW 1006.5114 LC-MS/MS ALC=60%



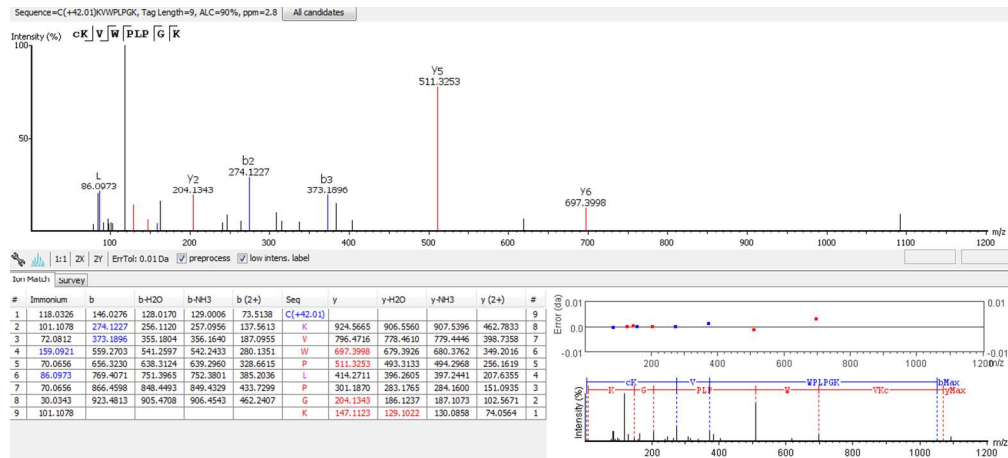
MW 1008.4694 LC-MS/MS ALC=67%



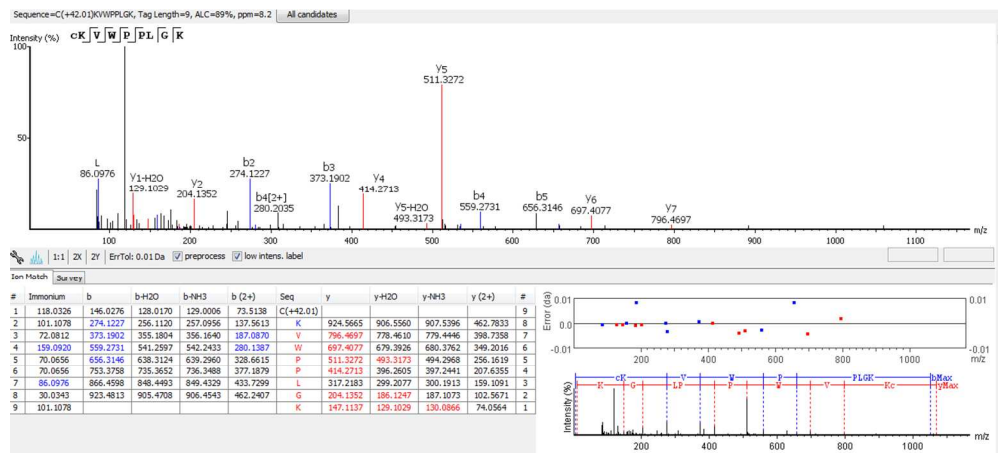
MW 1021.5575 LC-MS/MS ALC=54%



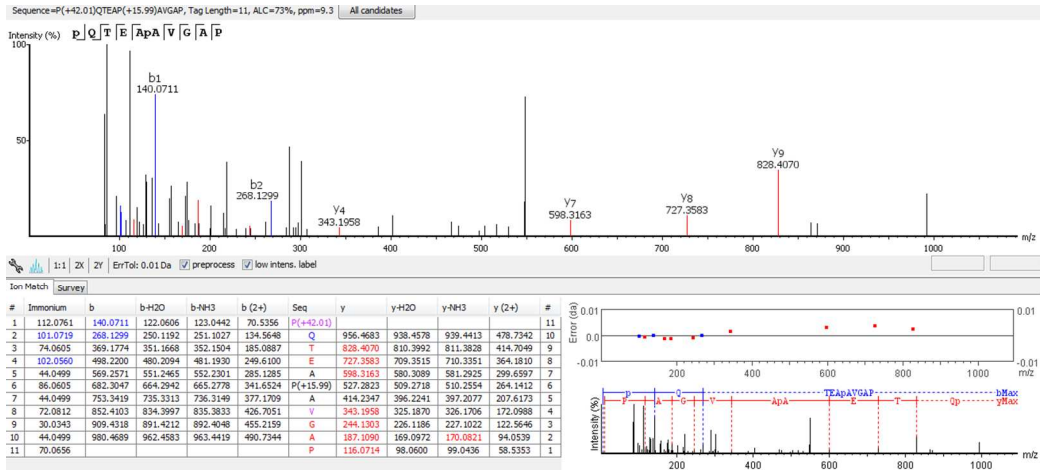
MW 1068.5733 LC-MS/MS ALC=90%



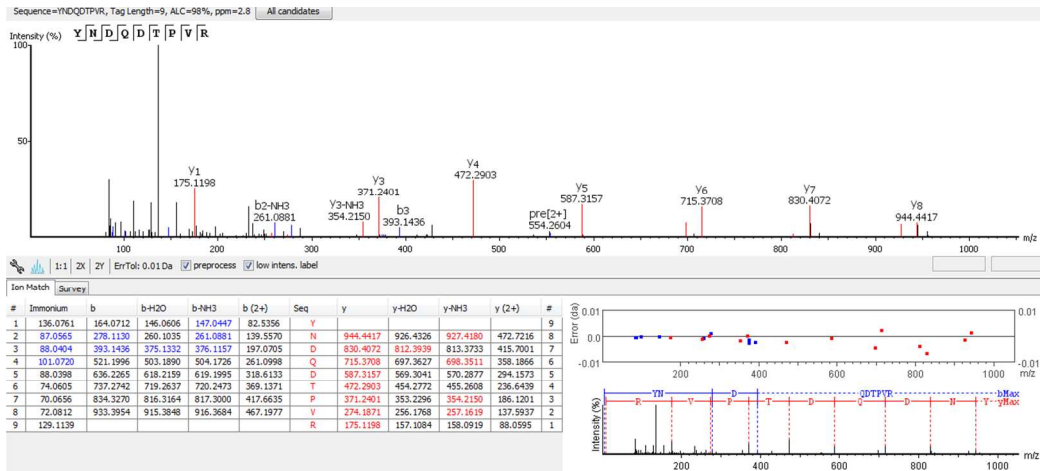
MW 1068.5733 LC-MS/MS ALC=89%



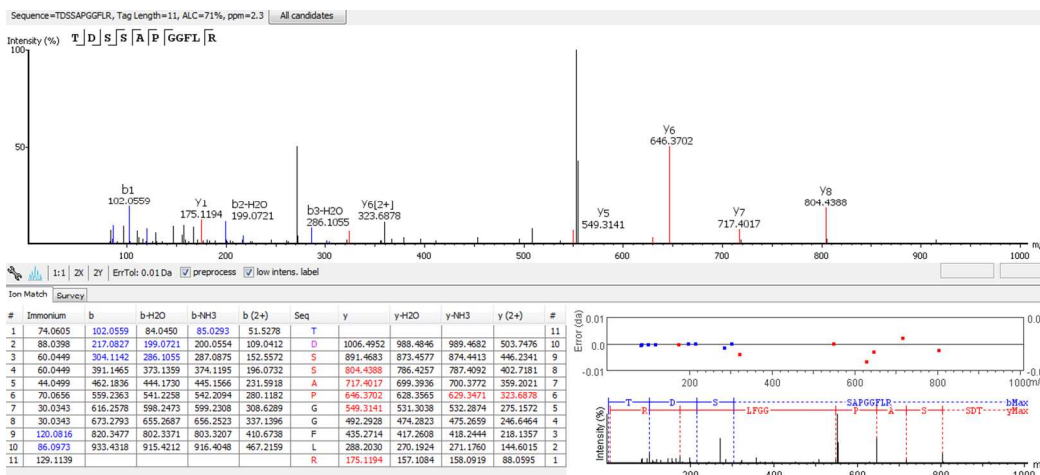
MW 1094.5280 LC-MS/MS ALC=73%



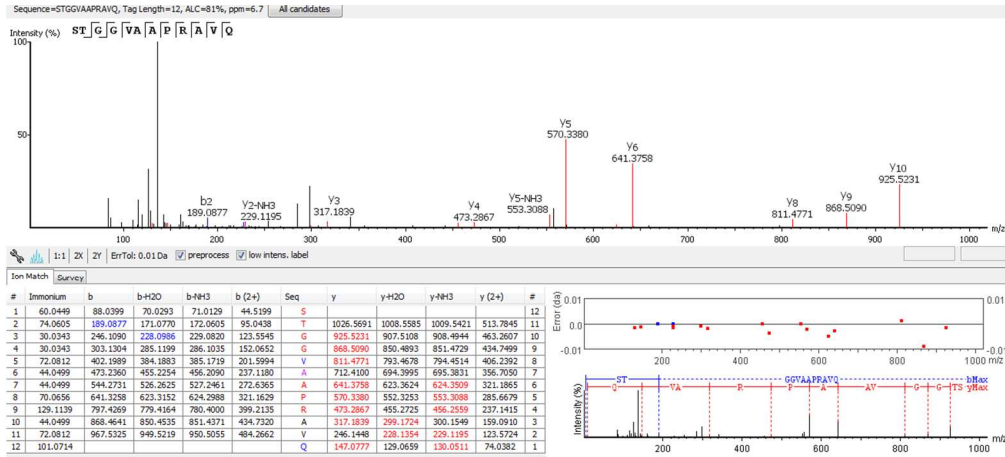
MW 1106.5081 LC-MS/MS ALC=98%



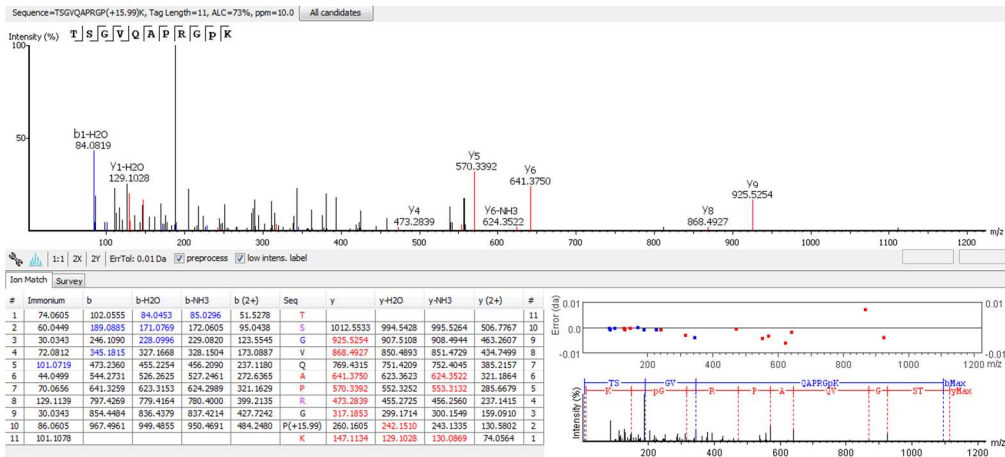
MW 1106.5255 LC-MS/MS ALC=71%



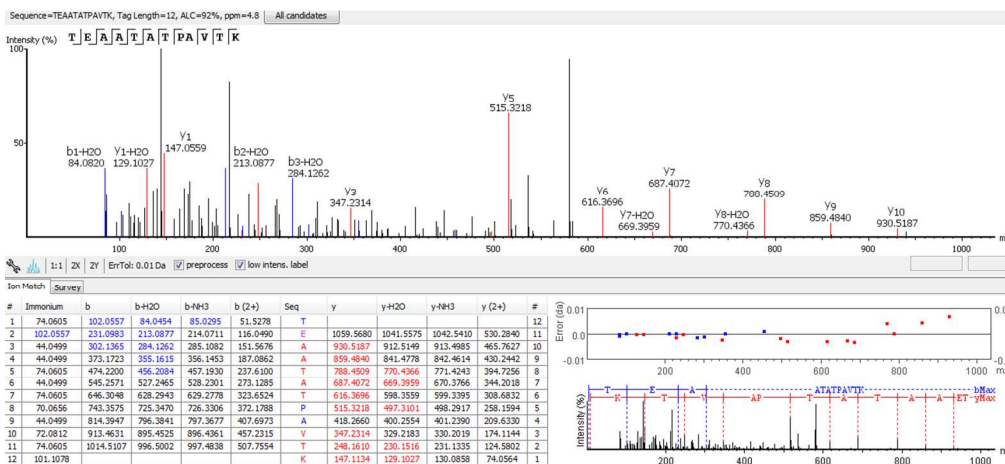
MW 1112.5974 LC-MS/MS ALC=81%



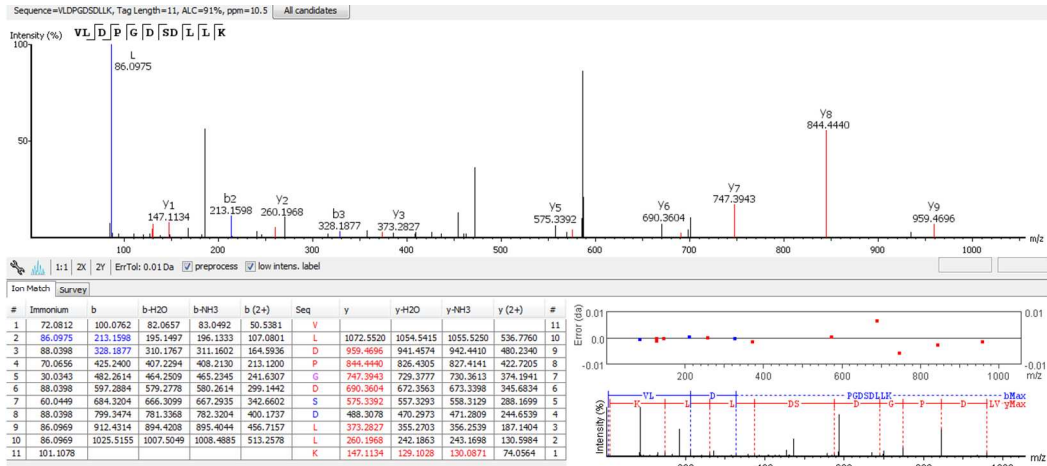
MW 1112.5974 LC-MS/MS ALC=73%



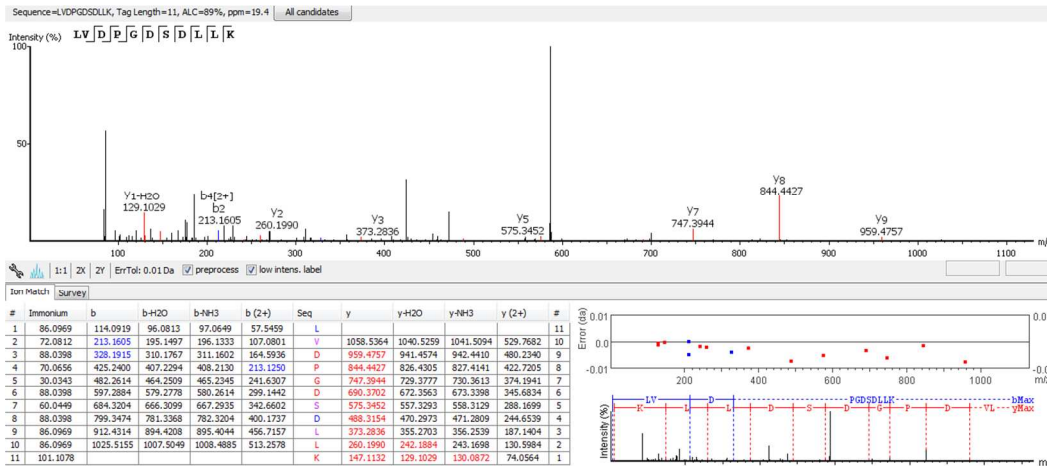
MW 1159.6191 LC-MS/MS ALC=92%



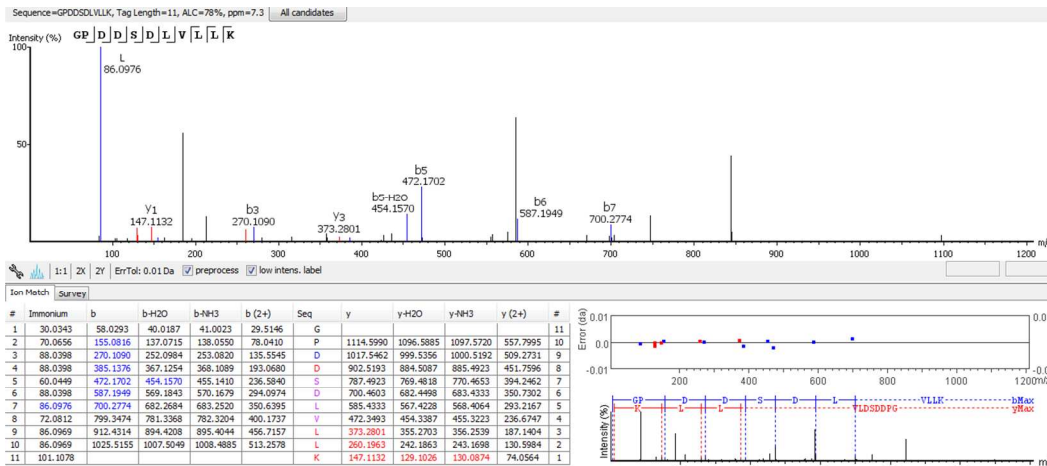
MW 1170.6070 LC-MS/MS ALC=91%



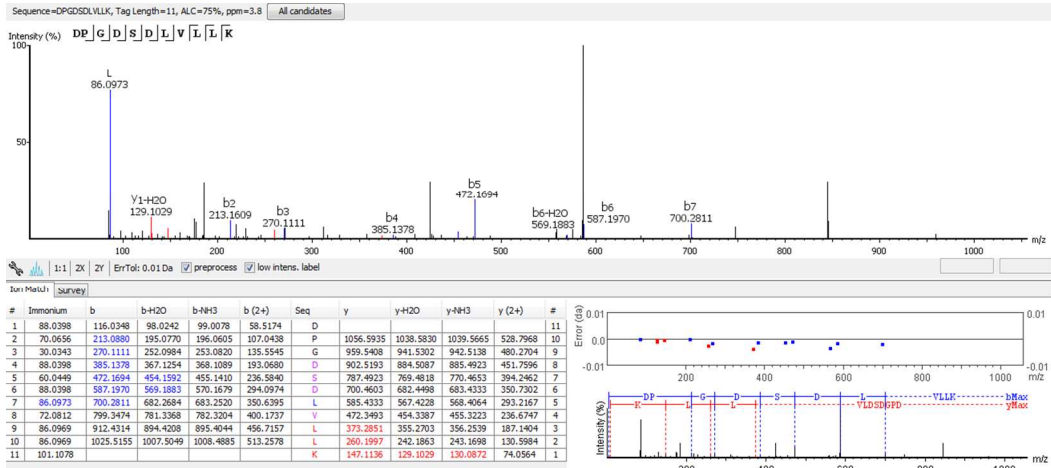
MW 1170.6070 LC-MS/MS ALC=89%



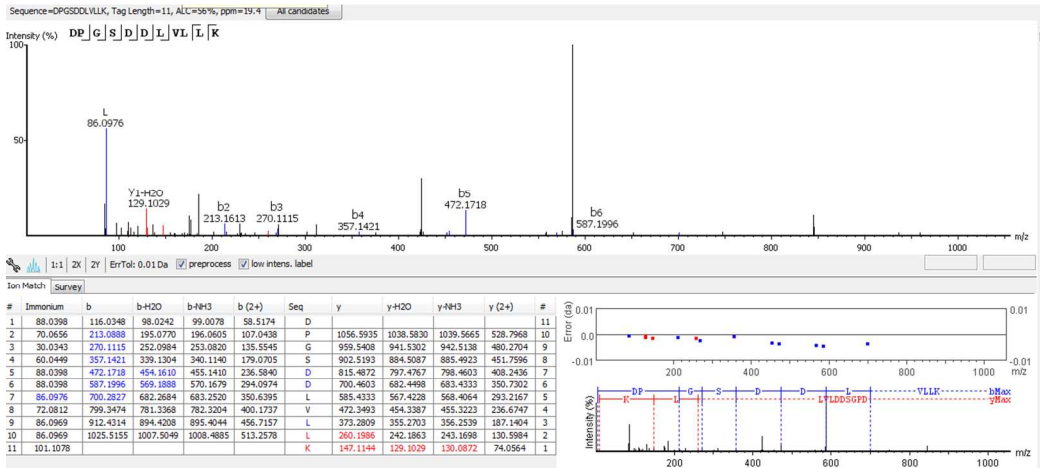
MW 1170.6070 LC-MS/MS ALC=78%



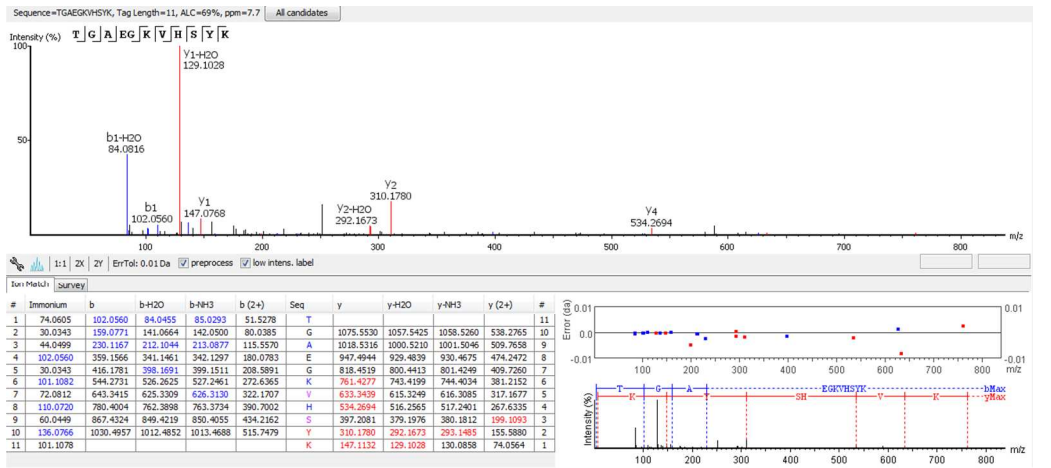
MW 1170.6070 LC-MS/MS ALC=75%



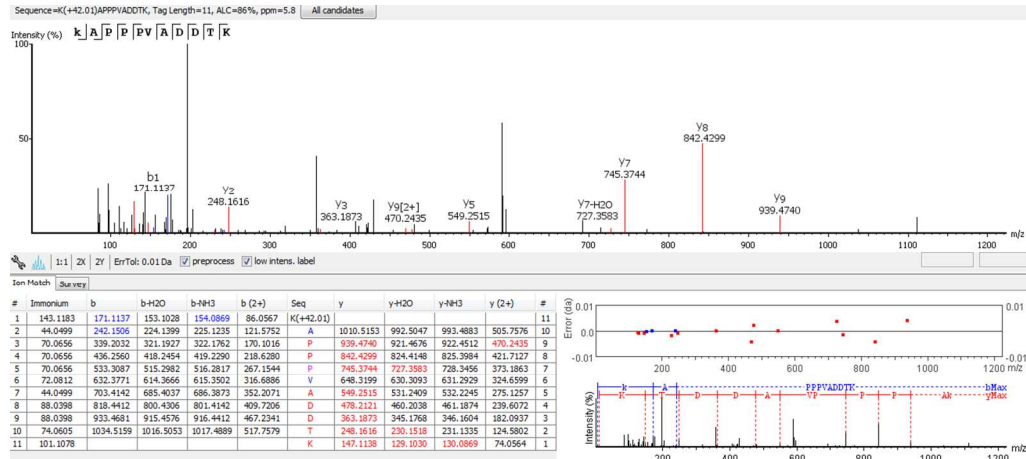
MW 1170.6070 LC-MS/MS ALC=56%



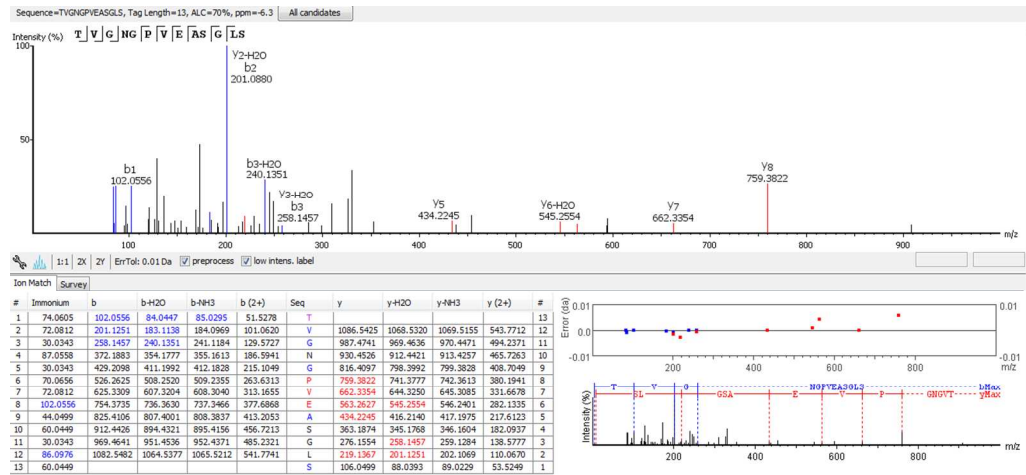
MW 1175.5925 LC-MS/MS ALC=69%



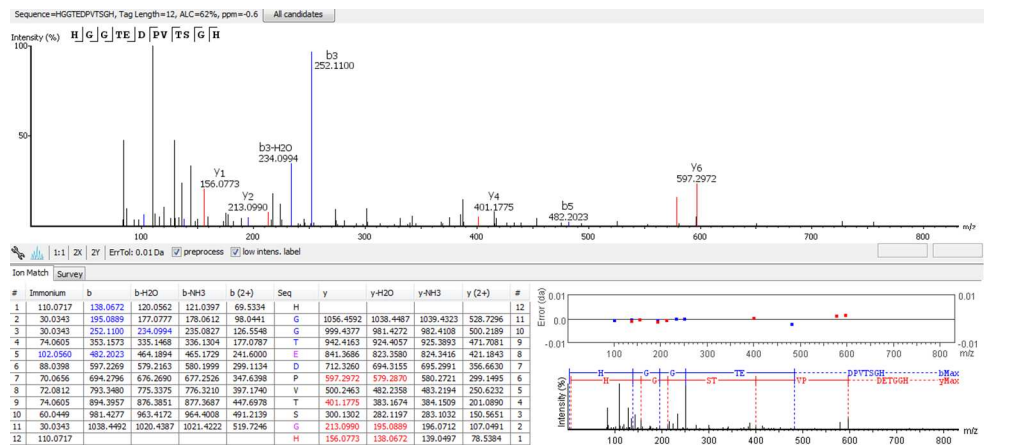
MW 1179.6039 LC-MS/MS ALC=86%



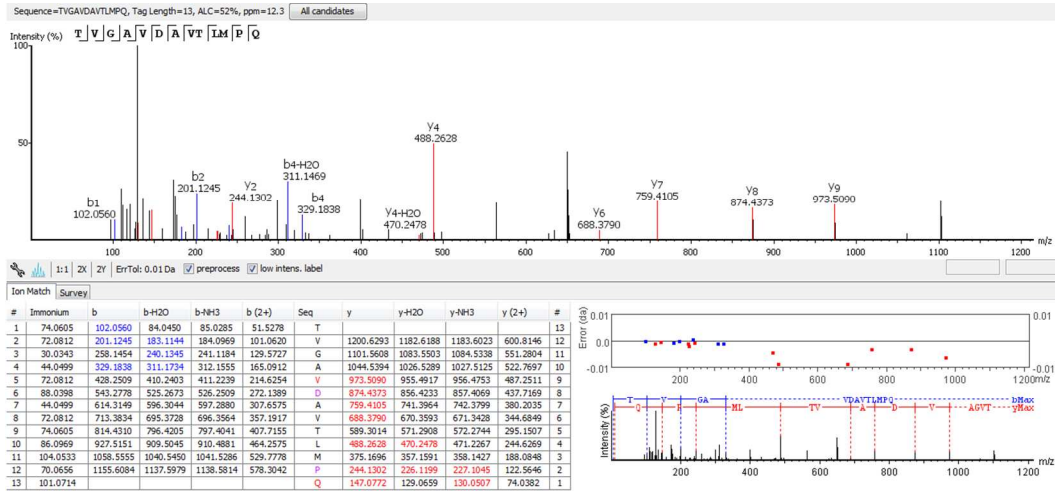
MW 1186.5763 LC-MS/MS ALC=70%



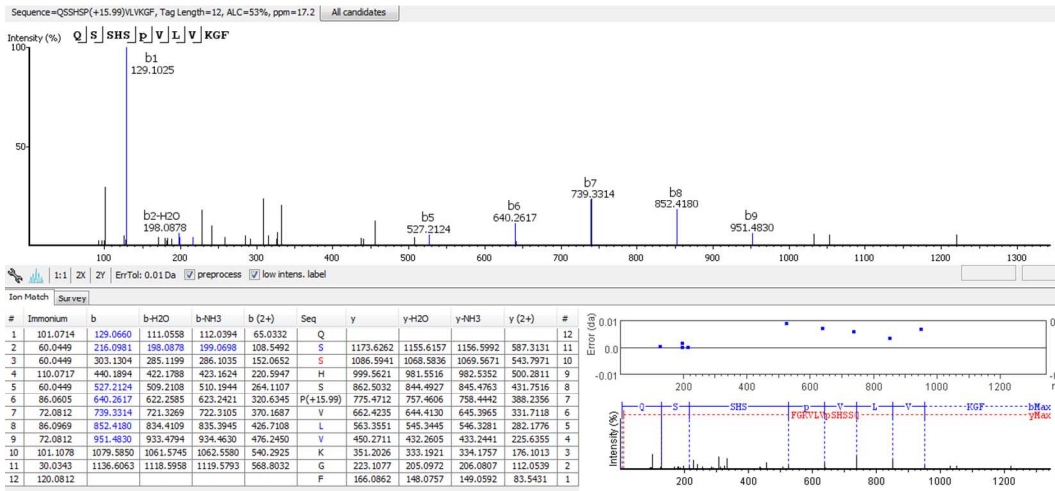
MW 1192.5108 LC-MS/MS ALC=62%



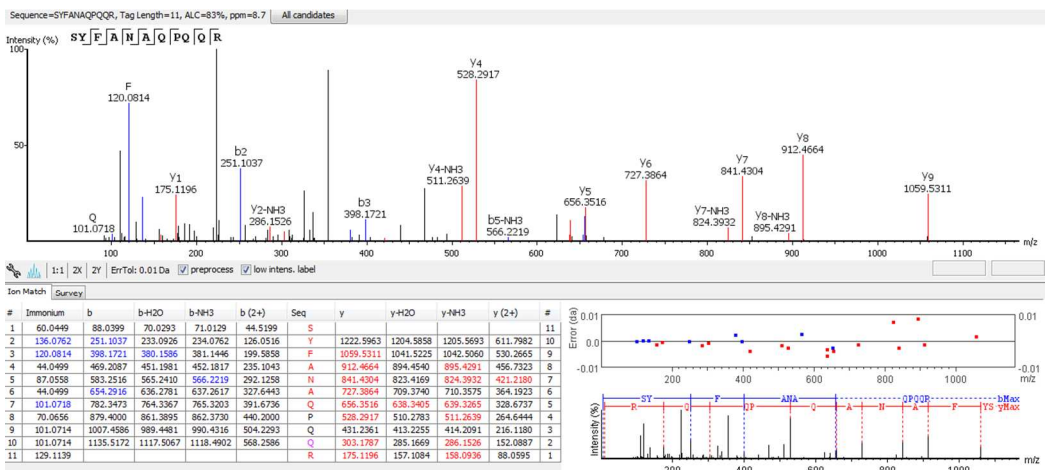
MW 1300.6790 LC-MS/MS ALC=52%



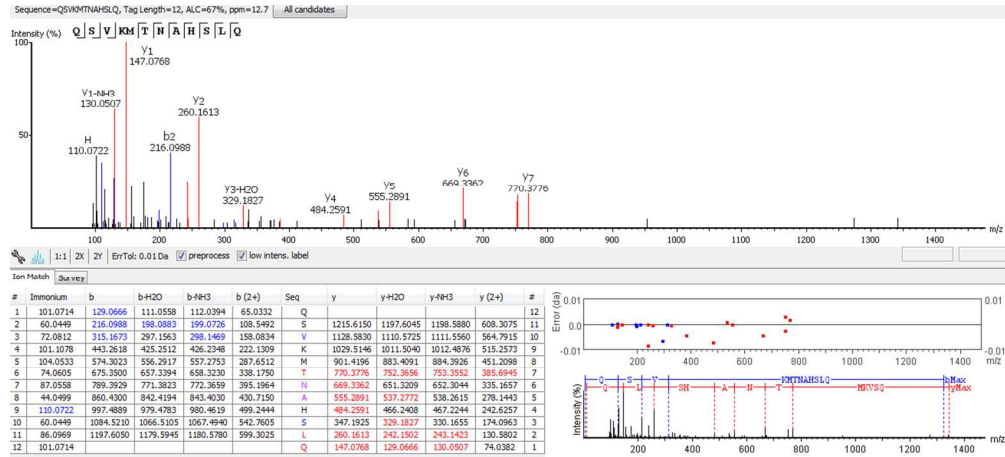
MW 1300.6790 LC-MS/MS ALC=53%



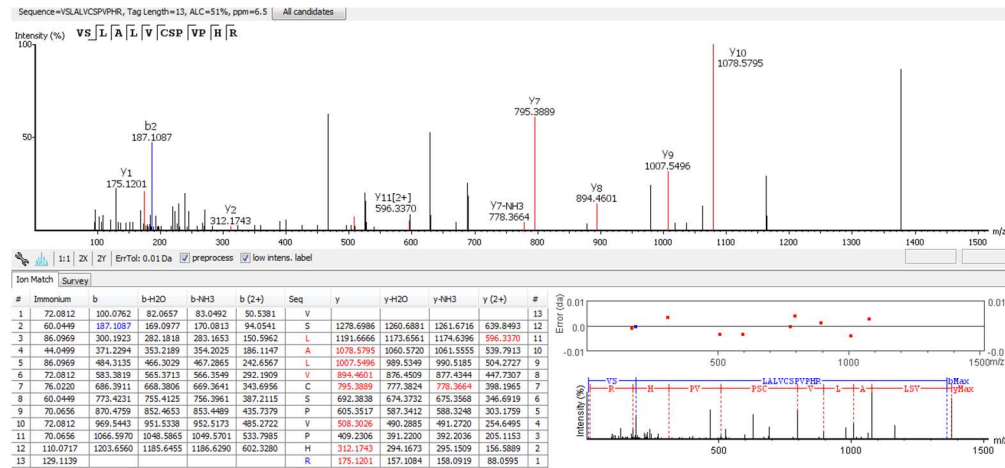
MW 1308.6282 LC-MS/MS ALC=83%



MW 1342.6713 LC-MS/MS ALC=67%



MW 1376.7577 LC-MS/MS ALC=51%



MW 1728.9683 LC-MS/MS ALC=53%

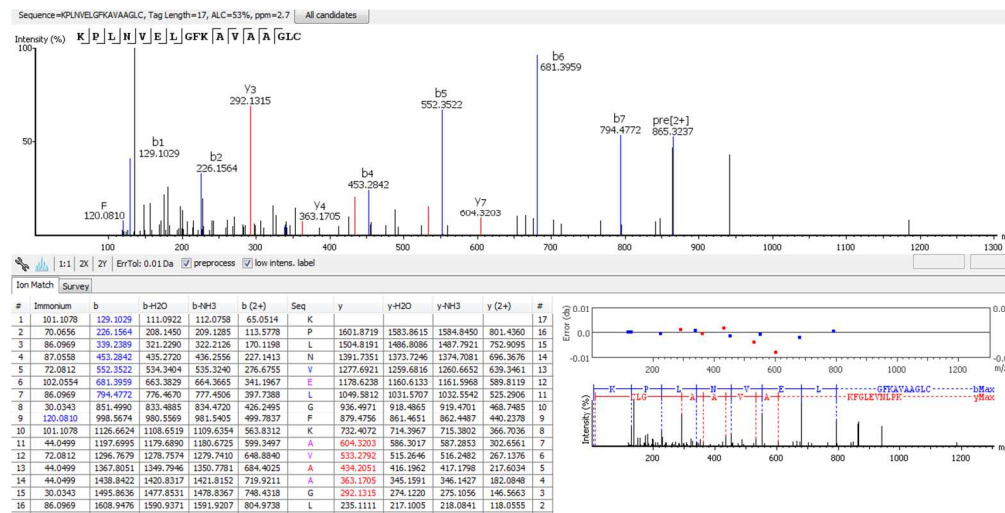
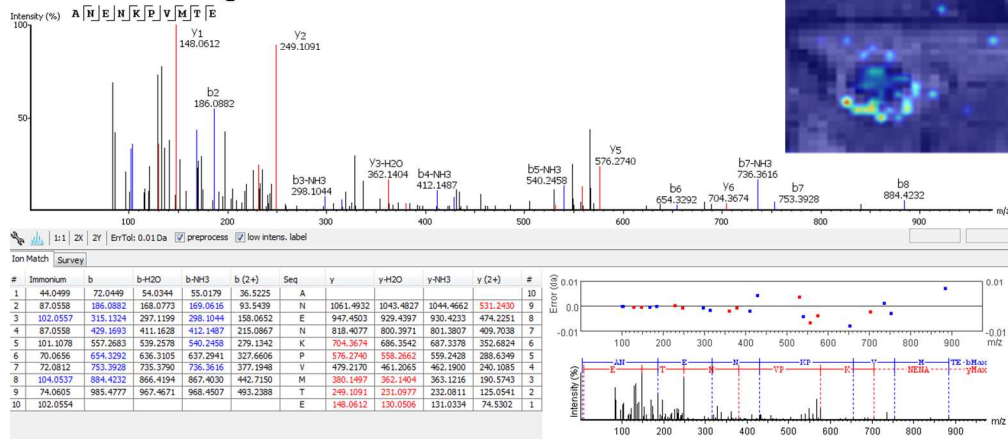


Figure S3: Annotated MS/MS spectra of unique peptides.

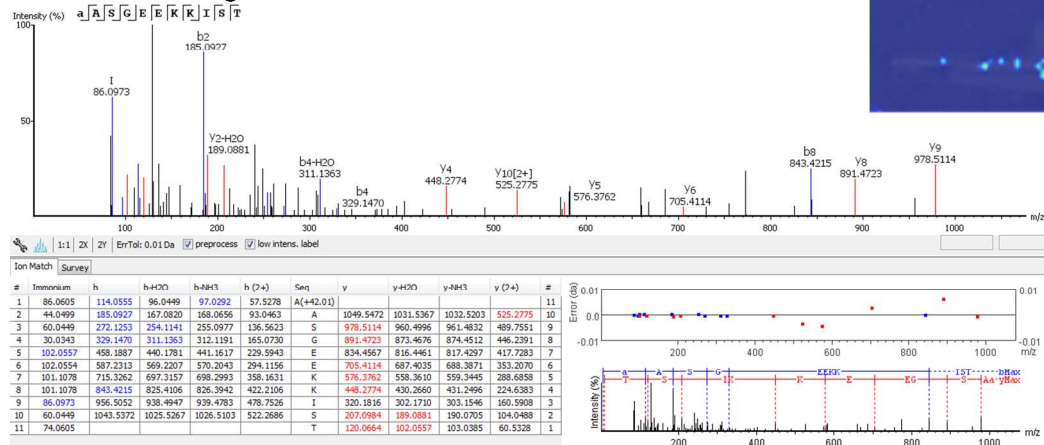
m/z 1132.53084, Wound-inducible Basic Family Protein
LC-MS/MS -10lgP=24.3

MALDI-MSI



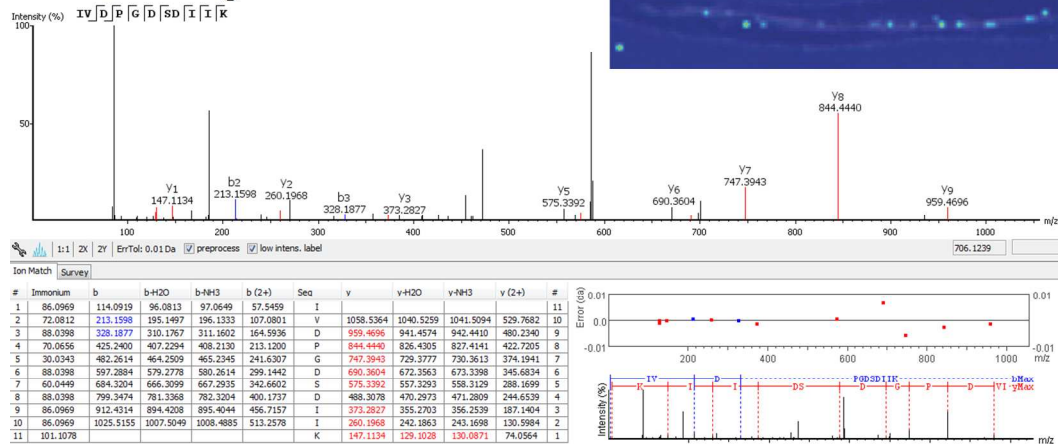
m/z 1162.59554, Low-temperature Inducible/ Nodulin-like Protein
LC-MS/MS -10lgP=29.2

MALDI-MSI



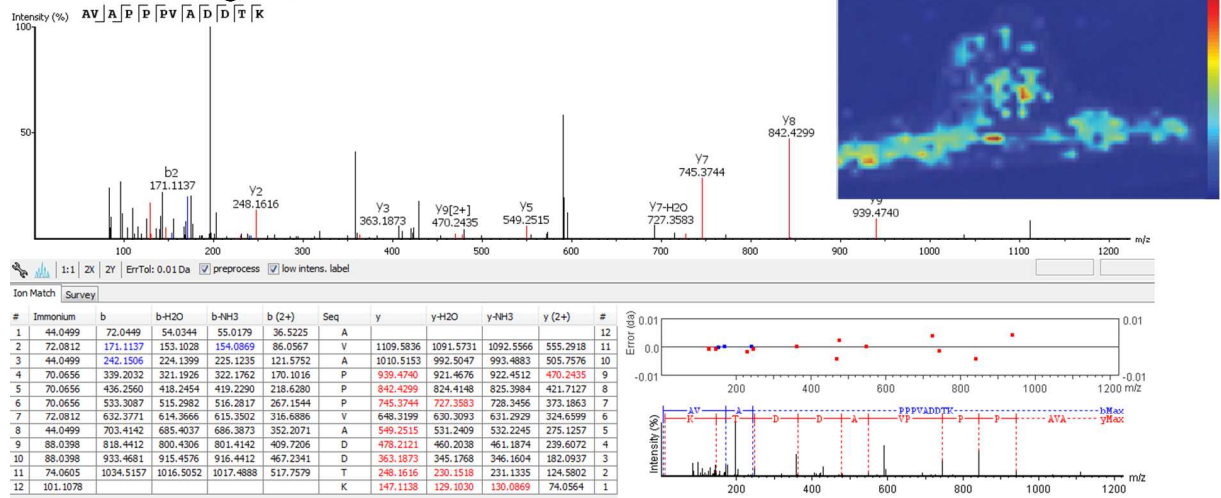
m/z 1171.62114, 60S Ribosomal Protein L30
LC-MS/MS -10lgP=27.54

MALDI-MSI



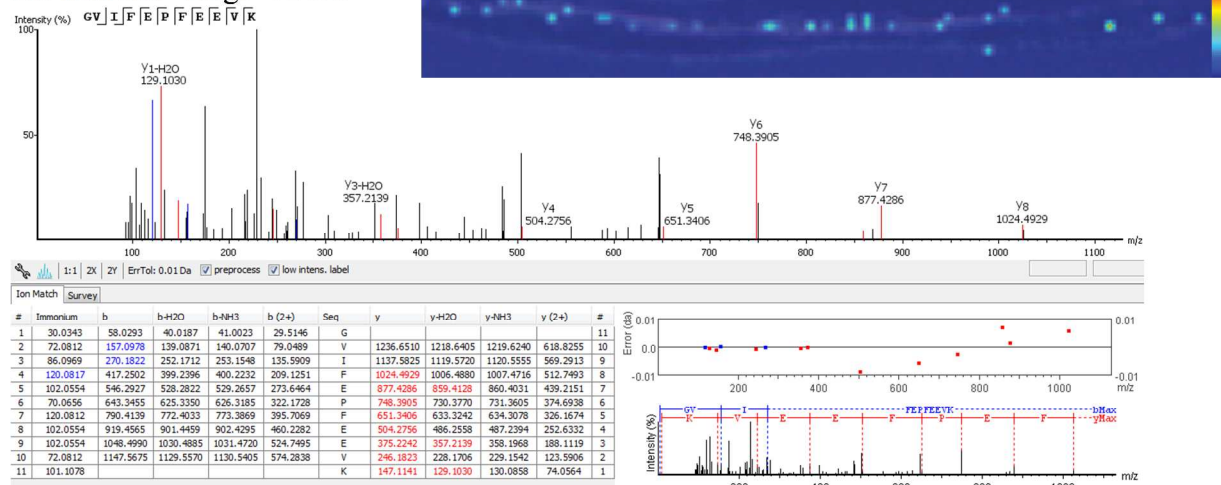
m/z 1180.62144, Carboxy-terminal Region Remorin
LC-MS/MS -10lgP=32.68

MALDI-MSI

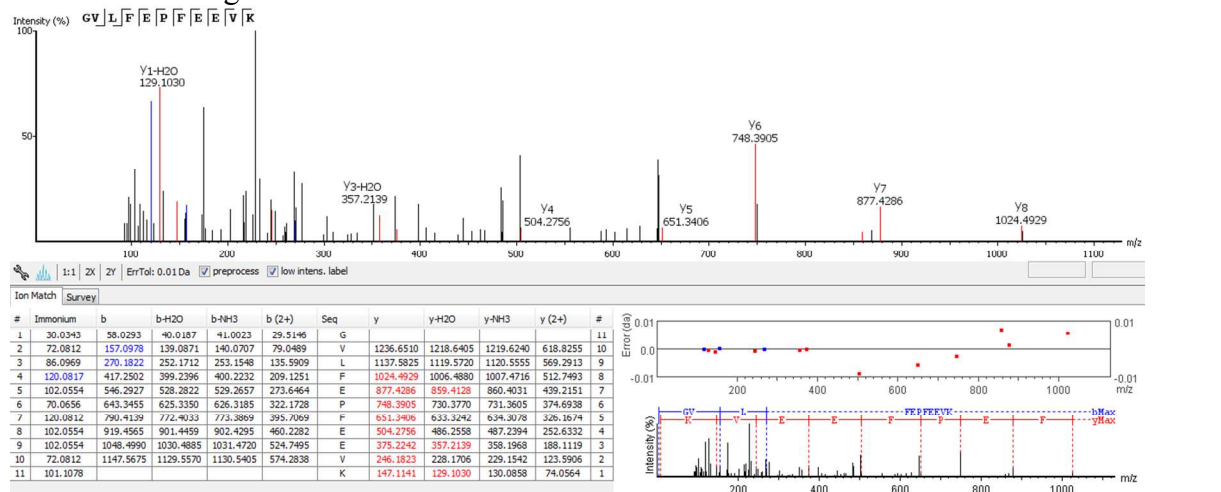


m/z 1293.67314, Ferritin
LC-MS/MS -10lgP=27.38

MALDI-MSI

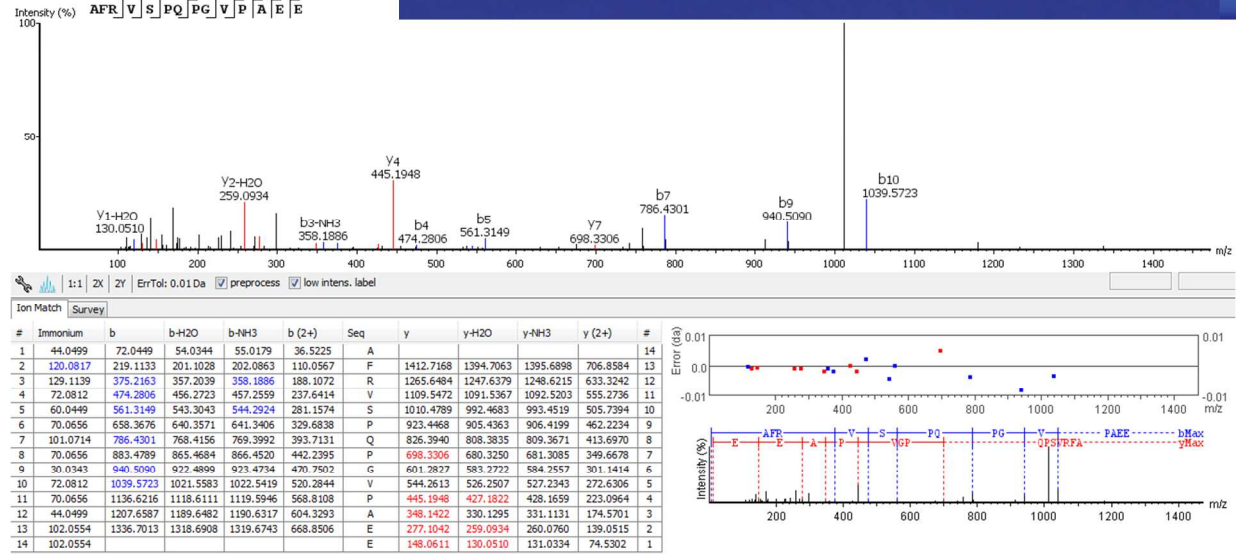


LC-MS/MS -10lgP=27.38



m/z 1483.75454, Ribulose Biphosphate Carboxylase/ Oxygenase Large Chain Domain Protein MALDI-MSI

LC-MS/MS -10lgP=35.64



m/z 1976.02434, Basic 7S Globulin/ Peptidase A1, Pepsin MALDI-MSI

LC-MS/MS -10lgP=29.66

