

Figure S1A
HCT116

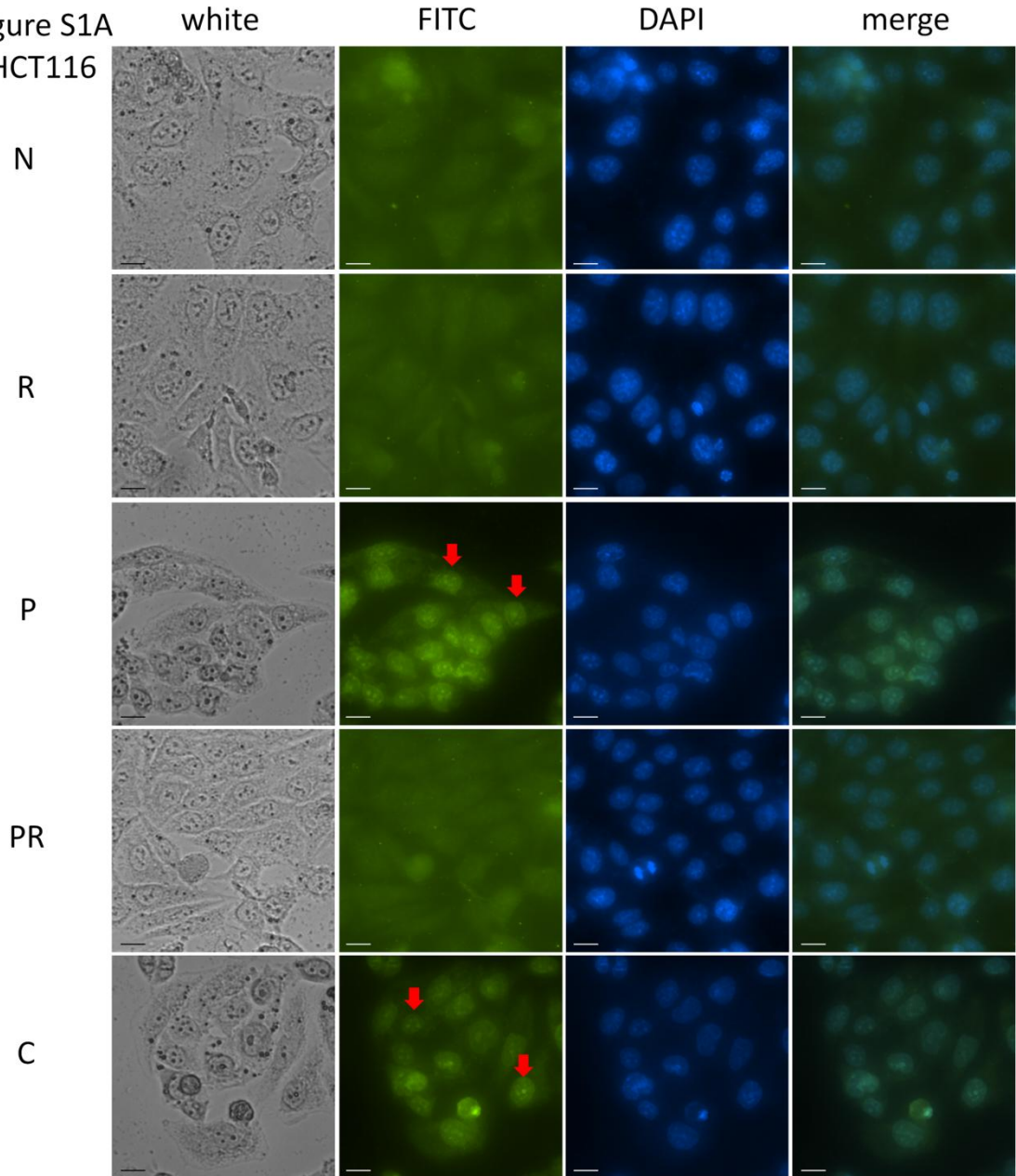
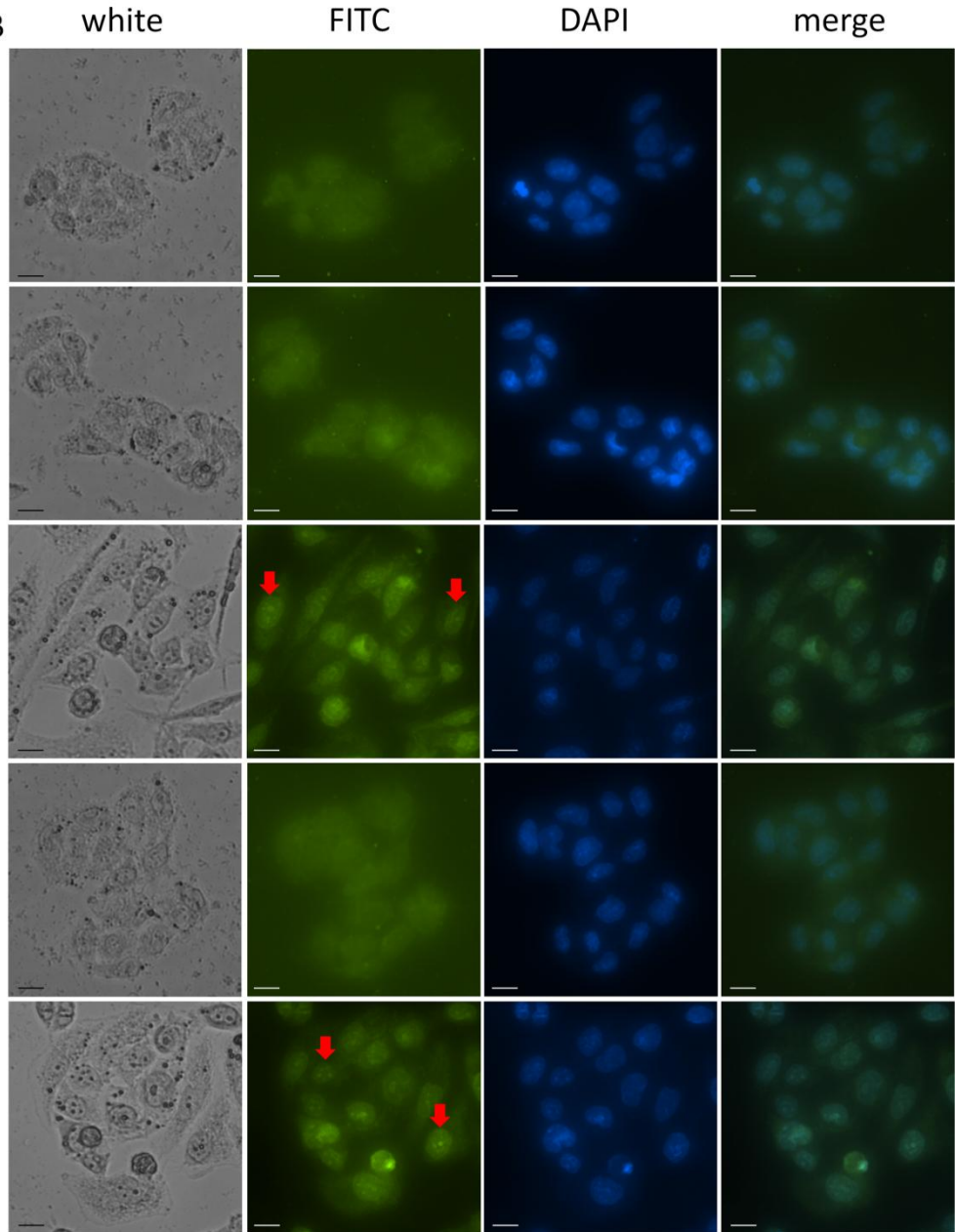


Figure S1B
LoVo



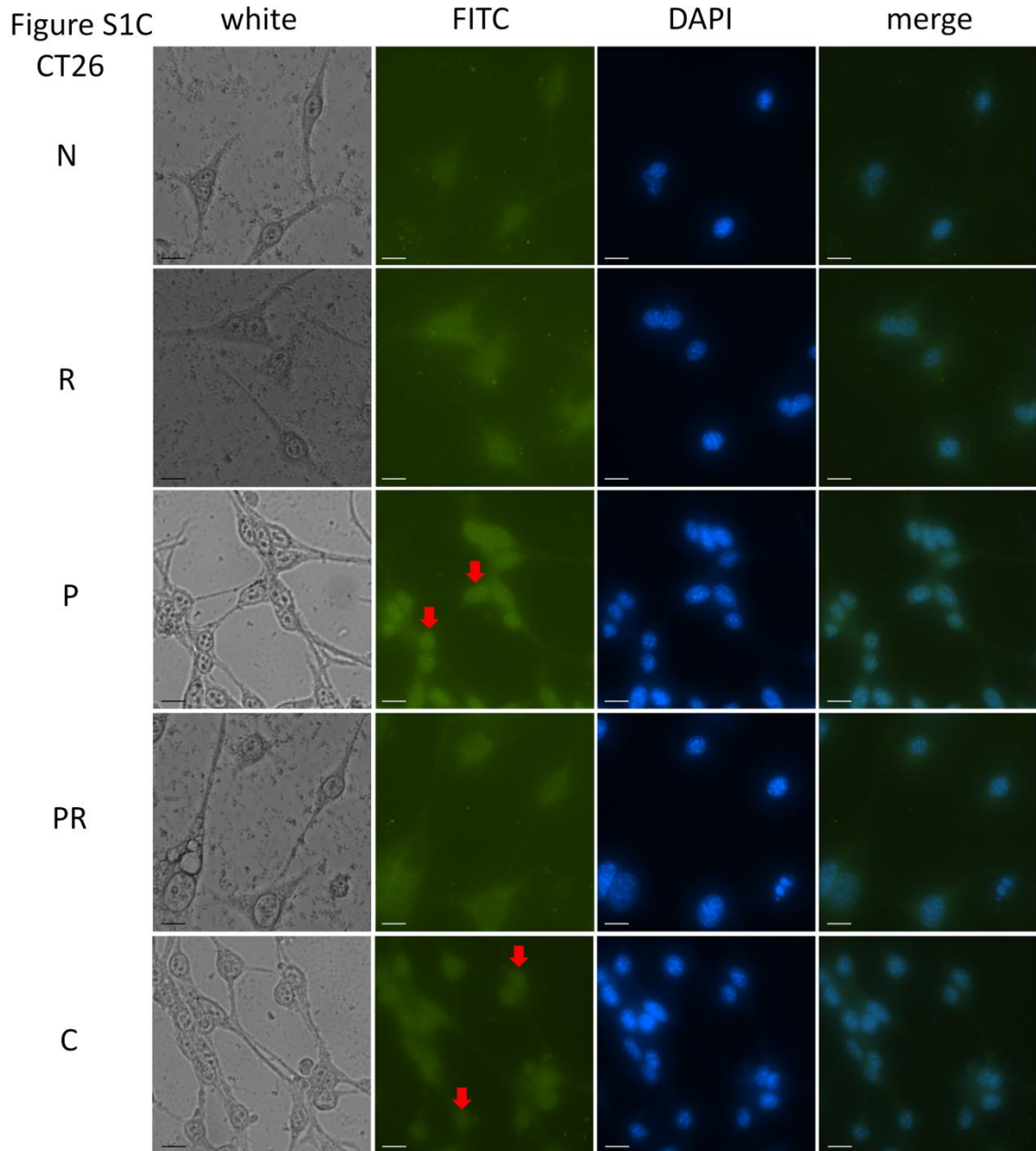


Figure S1: Immunocytochemistry analysis of NF- κ B p65. The three colorectal cancer cell lines are immunostained with p65 antibody followed by FITC-conjugated antibody. The cell types are listed in the left column. “N”, “R”, “P”, “PR” and “C” were defined in caption of Fig.1. The scale bars represent 20 μ m. Red arrows indicate that p65 has high expression level in nuclei of “P” group cells by comparison of FITC and DAPI stain. (A) HCT116; (B) LoVo; (C) CT26.