

Figure S3A
HCT116

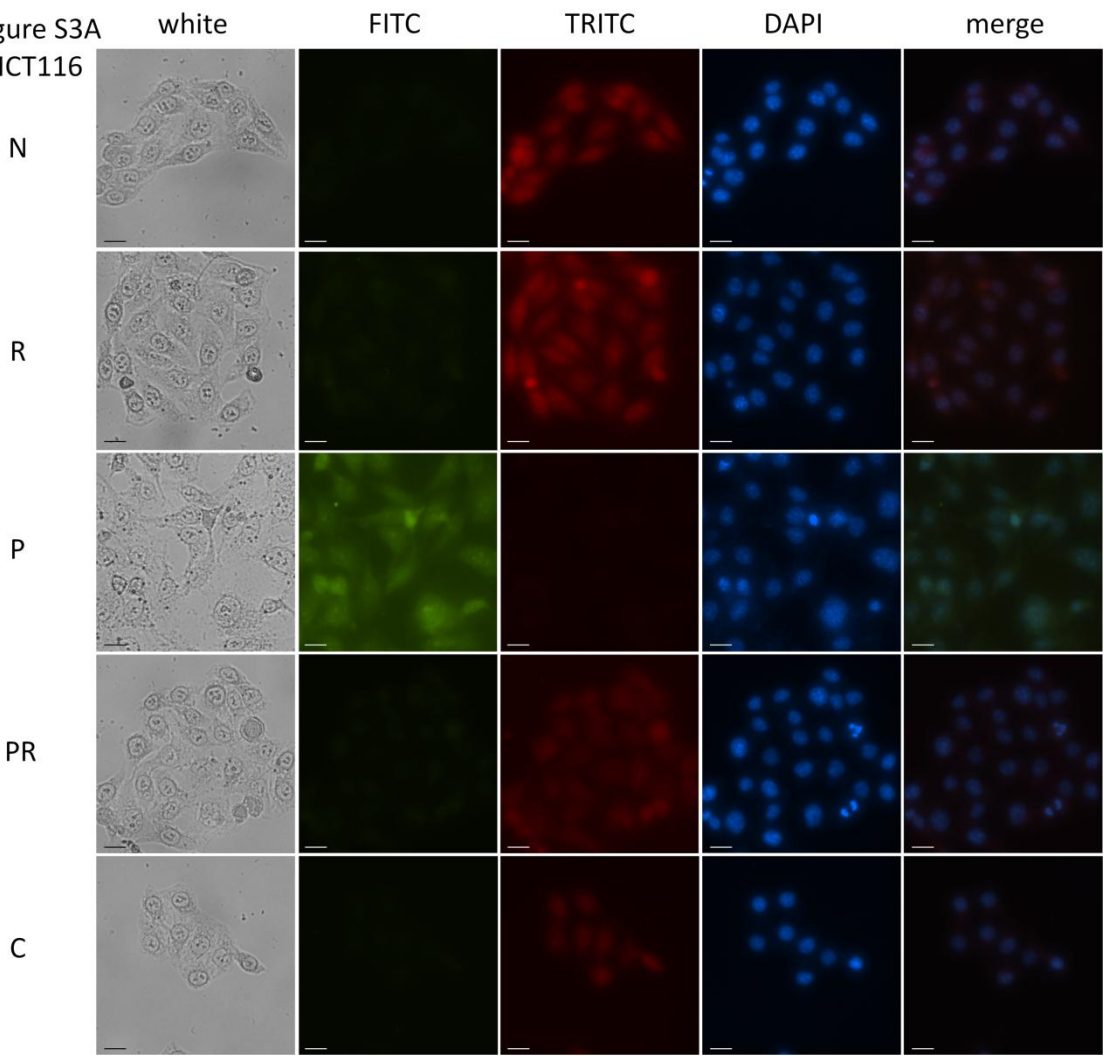
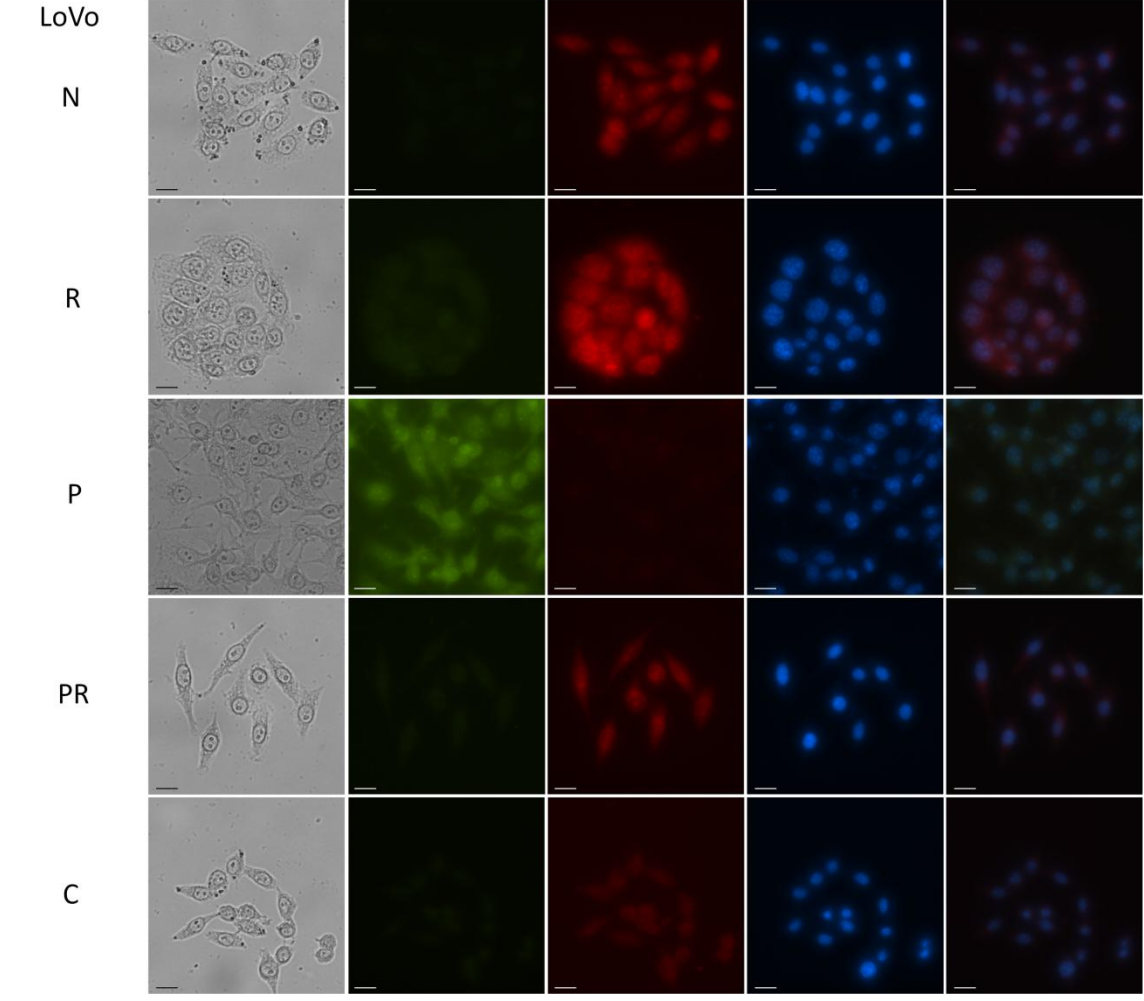


Figure S3B



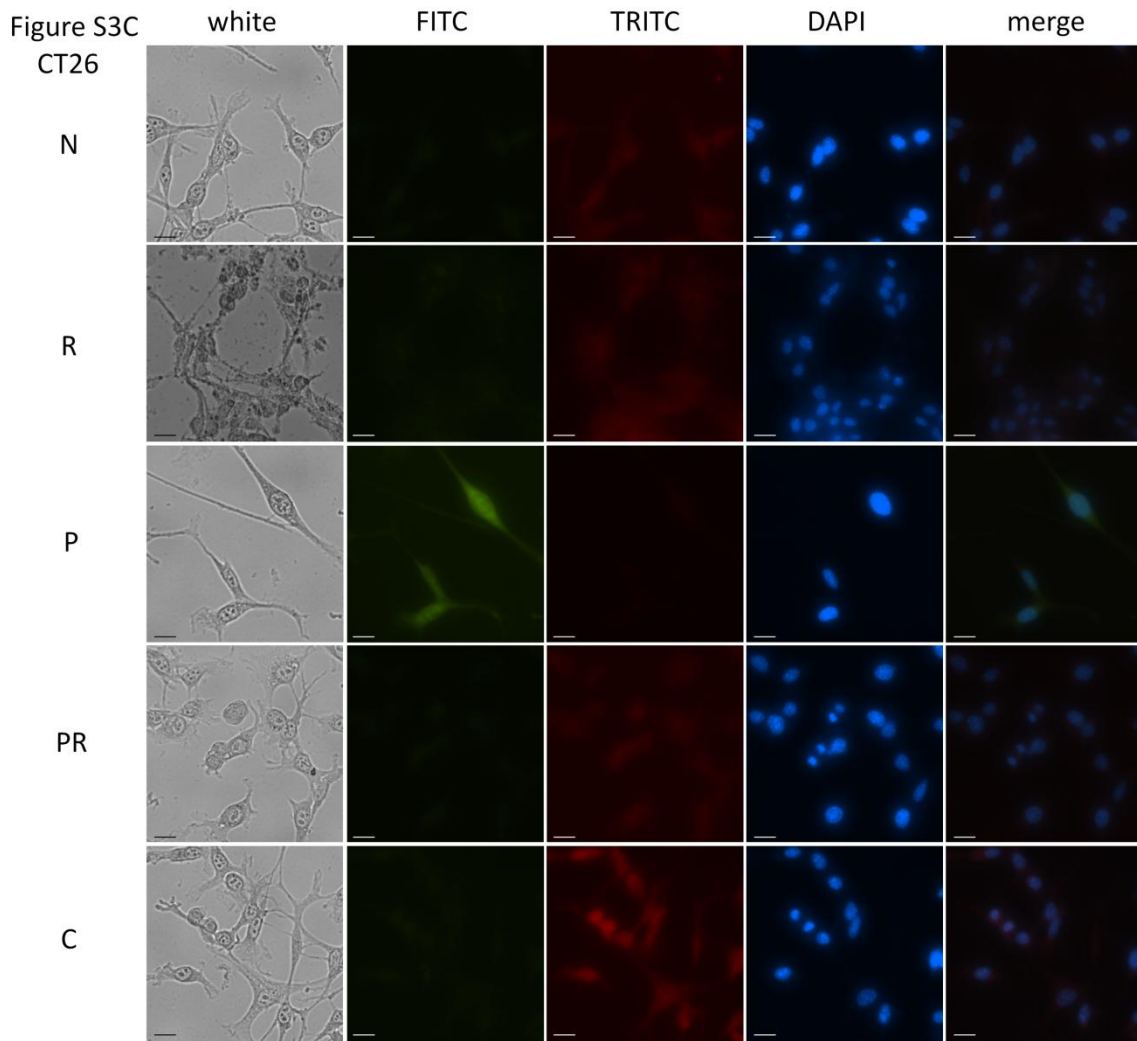


Figure S3: Immunocytochemistry analysis of E-cadherin and vimentin. The three colorectal cancer cell lines are immunostained with E-cadherin and vimentin antibody followed by FITC and TRITC-conjugated antibody. The cell types are listed in the left column. “N”, “R”, “P”, “PR” and “C” were defined in caption of Fig.1. The scale bars represent 20 μm . (A) HCT116; (B) LoVo; (C) CT26.