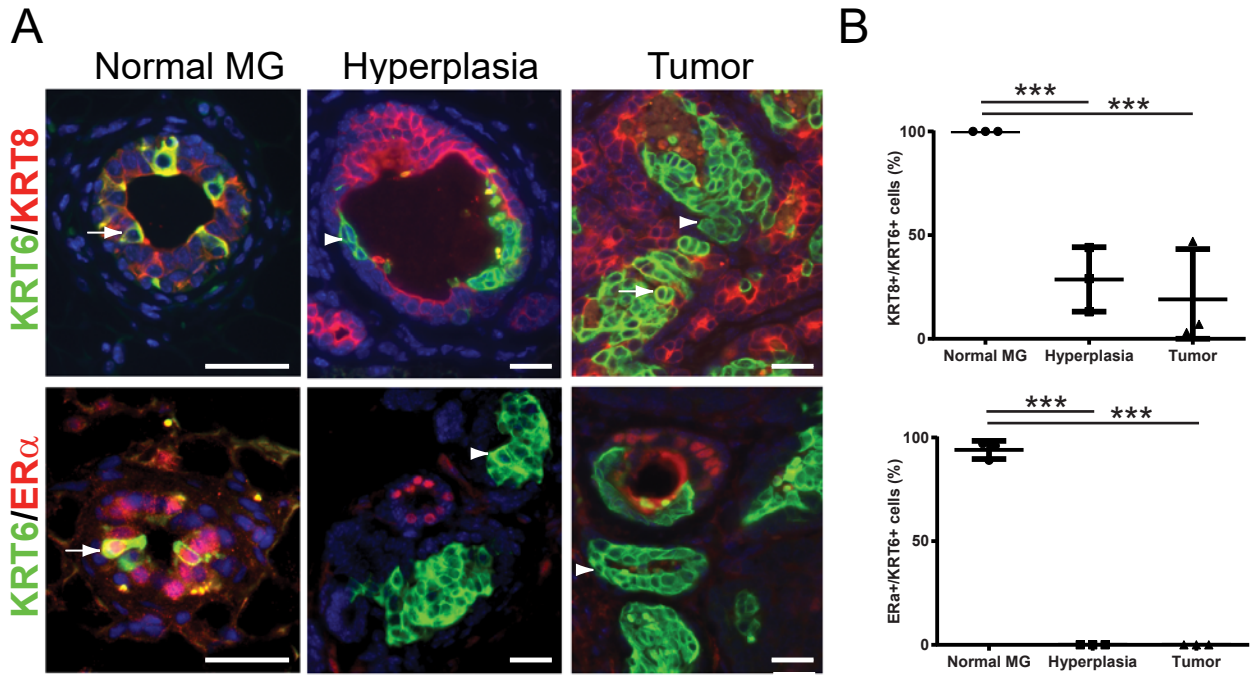


Supplementary Figure 3



**Supplementary Figure 3. KRT6+ cells in the precancerous stage and cancer stage of MMTV-*Wnt1* mammary glands are different from those in the normal mammary glands.** (A) Co-IF for KRT6/KRT8 (top) and KRT6/ER $\alpha$  (bottom). Normal mammary gland (left, age = 5 weeks), precancerous lesion (middle, age = 5 weeks), and tumor (right) from MMTV-*Wnt1* mammary glands were co-stained for KRT6 (green) and either KRT8 (red) or ER $\alpha$  (red). Scale bar = 20 $\mu$ m. Arrows, costained cells. Arrowheads, non-costained cells. (B) Quantification of the percentages of KRT6+ cells also positive for KRT8 (top) or ER $\alpha$  (bottom). \*\*\*:  $P < 0.001$ .