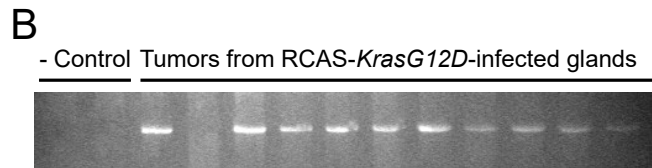
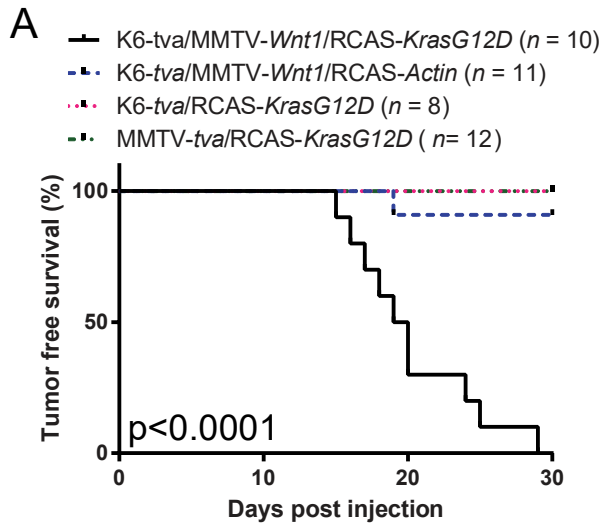


Supplementary Figure 5



**Supplementary Figure 5. RCAS-*KrasG12D* can induce tumors from KRT6A+ cells in K6a-*tva*/MMTV-*Wnt1* mouse precancerous lesions. (A)** Tumor-free Kaplan-Meier plot of K6a-*tva*/MMTV-*Wnt1* mice infected by RCAS-*KrasG12D*. K6a-*tva*/MMTV-*Wnt1* mice infected by RCAS-*Actb* as well as K6a-*tva* and MMTV-*tva* mice infected by RCAS-*KrasG12D* were used as controls. Mouse age: K6a-*tva*/MMTV-*Wnt1* mice, 7~9 weeks; K6a-*tva*, 5~9 weeks; MMTV-*tva*, 10 weeks. Virus dosages for both RCAS-*KrasG12D* and RCAS-*Actb* were  $1 \times 10^7$  IUs/gland. **(B)** Detection of RCAS-*KrasG12D* provirus in tumors. PCR was used to detect RCAS-*KrasG12D* provirus in the genomic DNA of the indicated tumors. - Control: spontaneous tumors from uninfected MMTV-*Wnt1* mammary glands were included as a negative control.