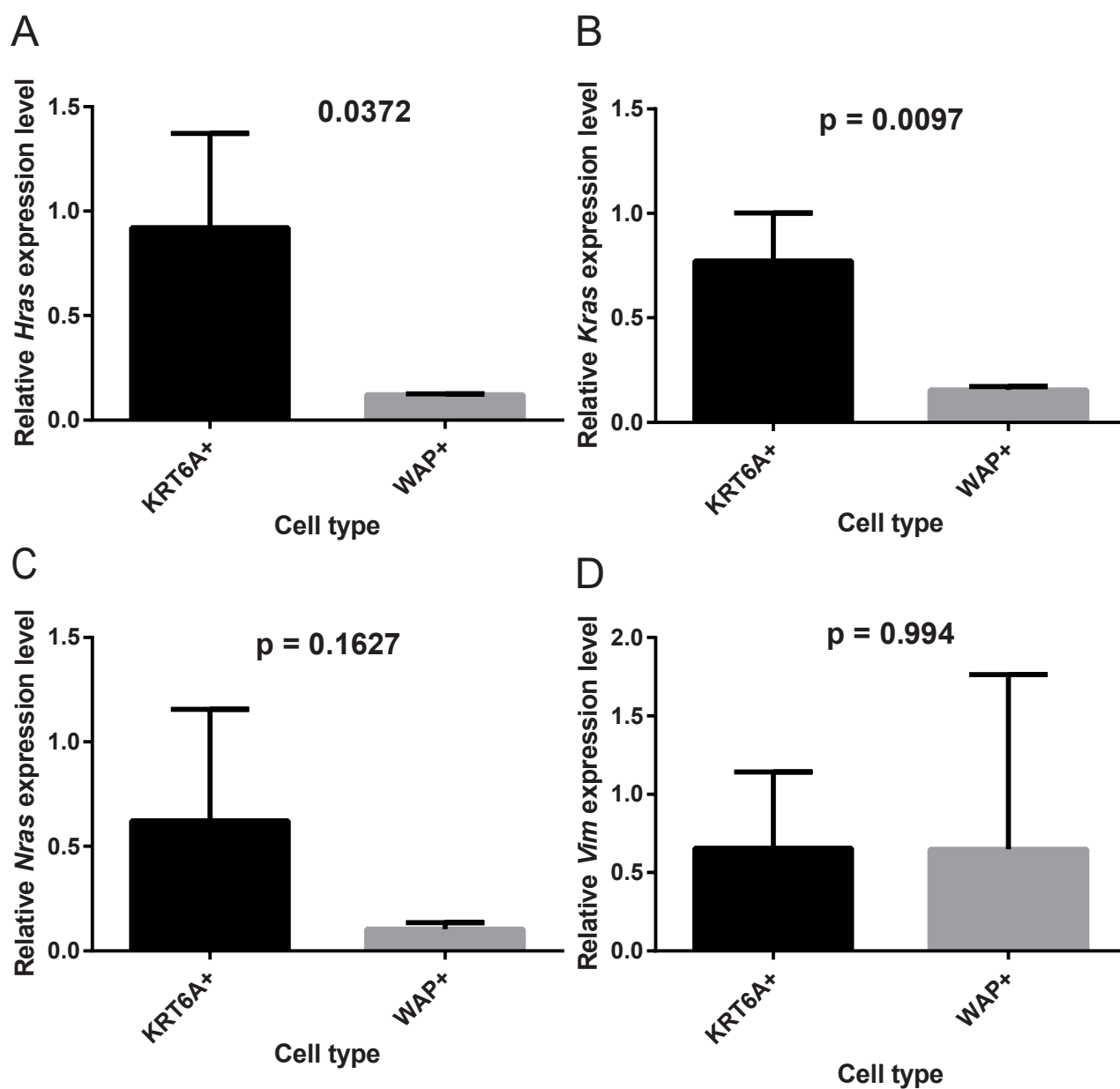


Supplementary Figure 7



Supplementary Figure 7. The gene expression of RAS family and Vimentin. The expression of *Hras* (A), *Kras* (B), *Nras* (C) and *Vim* (D) in TVA+ cells from K6a-*tva*/MMTV-*Wnt1* and WAP-*tva*/MMTV-*Wnt1* mouse precancerous mammary glands (n = 3, age = 8~9 weeks) were quantified by RT-qPCR, respectively.