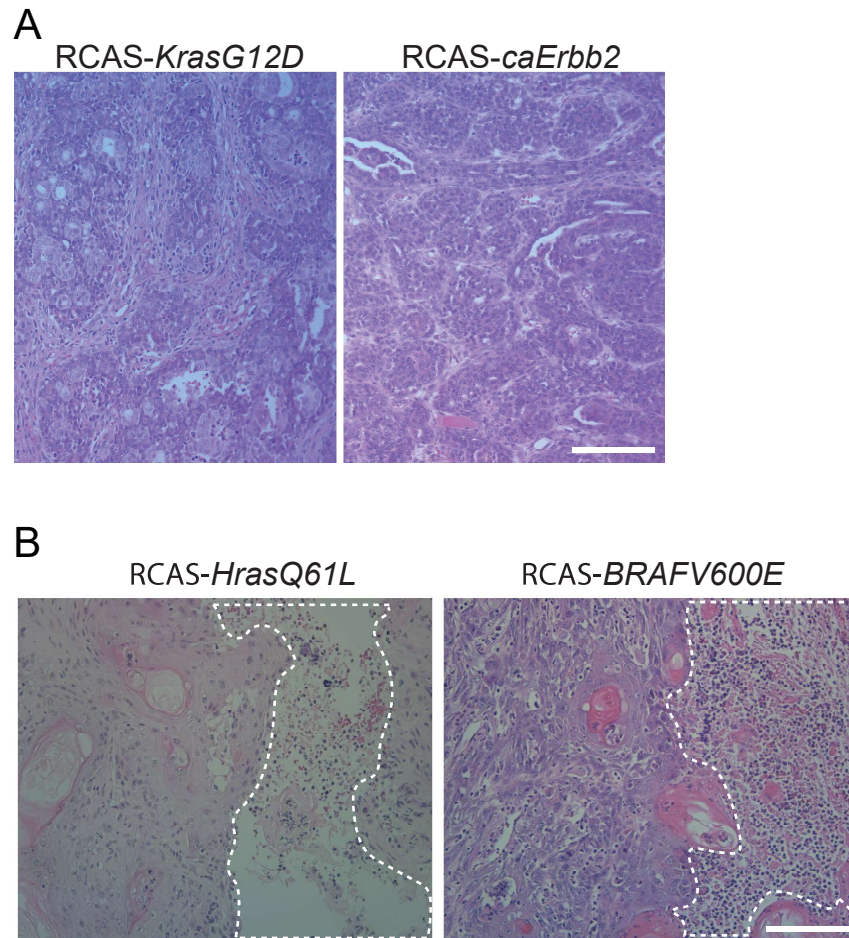


Supplementary Figure 8



**Supplementary Figure 8. Additional information on the histopathological characteristics of tumors originated from KRT6A+ and WAP+ cells. (A)** Tumors induced by RCAS-*KrasG12D* and RCAS-*caErbB2* from KRT6A+ cells in K6a-*tva*/MMTV-*Wnt1* mice are adenocarcinomas. Representative HE staining of tumors induced from KRT6A+ precancerous cells of K6a-*tva*/MMTV-*Wnt1* mice by the viruses indicated. Scale bar = 100um. **(B)** Tumors induced by RCAS-*HrasQ61L* (left) or RCAS-*BRAFV600E* (right) from WAP+ cells of WAP-*tva*/MMTV-*Wnt1* mouse mammary glands have significant necrosis (highlighted by dashed lines).