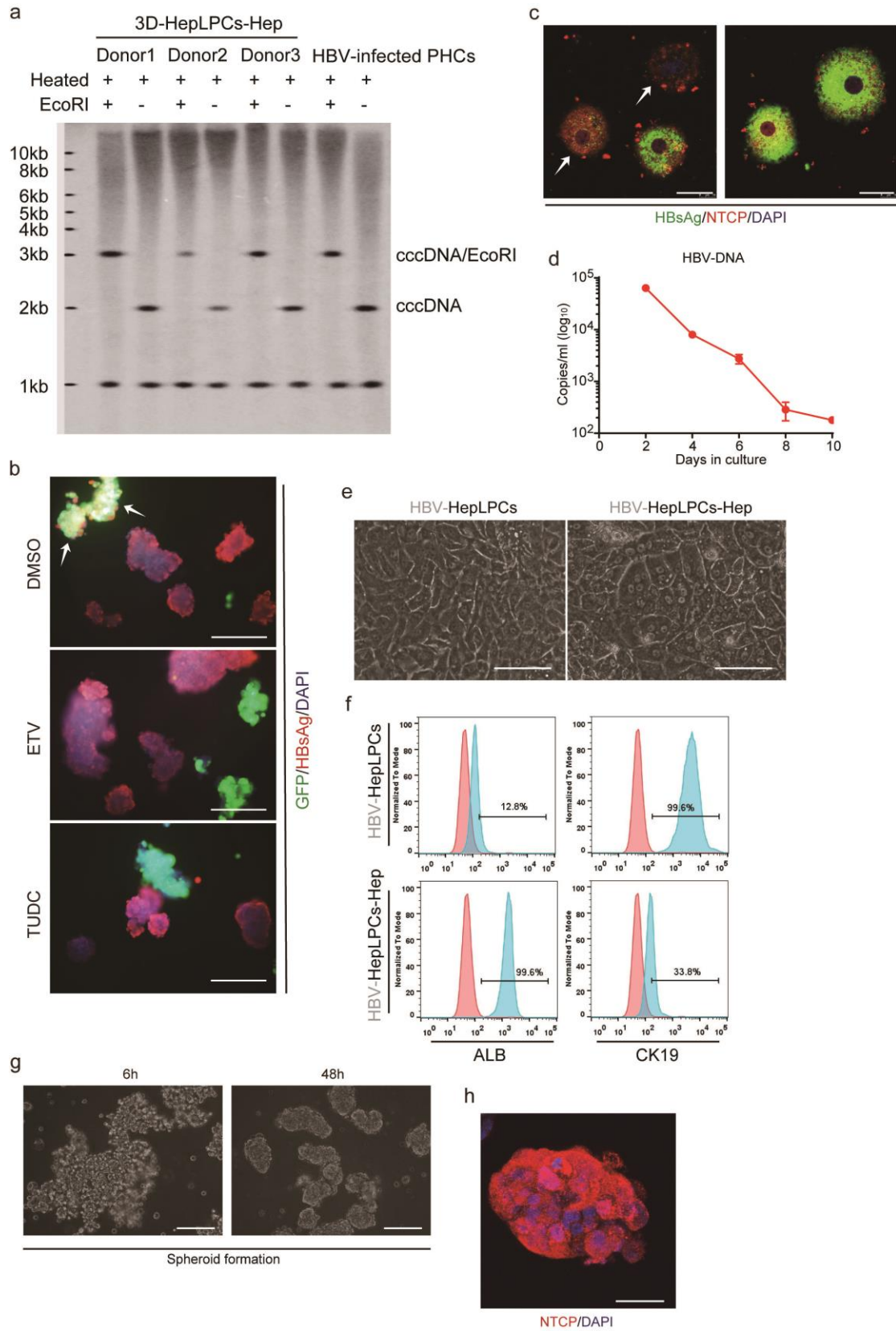


Fig. S10



Supplementary information, fig. S10 Characteristics of HepLPCs derived from HBV-infected patient and 3D spheroid differentiation, related to fig. 6. (a) Southern blot analysis for HBV cccDNA. (b) 3D-Diff HepLPCs were infected with HBV for 8 days, and then co-cultured with TBG-GFP labeled 3D-Diff HepLPCs with or without ETV or TUDC. Eight days after co-culture, HBsAg staining was used to evaluate HBV replication. Scale bar=200 μ m. (c) Immunofluorescence images of NTCP and HBsAg in PHCs derived from HBV-infected donors at day 0. Two representative fields are shown. Scale bars, 20 μ m. (d) Extracellular HBV-DNA in cells derived from HBV-infected livers cultured in TEM over 10 days. (e) Light microscopy images of HepLPCs and HepLPCs-Hep derived from HBV-infected donors. Scale bars, 50 μ m. (f) Flow cytometric analysis showing the proportion of ALB and CK19 positive cells in HepLPCs or HepLPCs-Hep from HBV-infected donor 3 passage 5. Blue, positive cells; red, negative controls. (g) Time course of cellular spheroid formation. Scale bars, 200 μ m. (h) Immunofluorescence images of NTCP in 3D spheroid of patient-derived HepLPCs-Hep at day 15. Scale bar, 25 μ m.