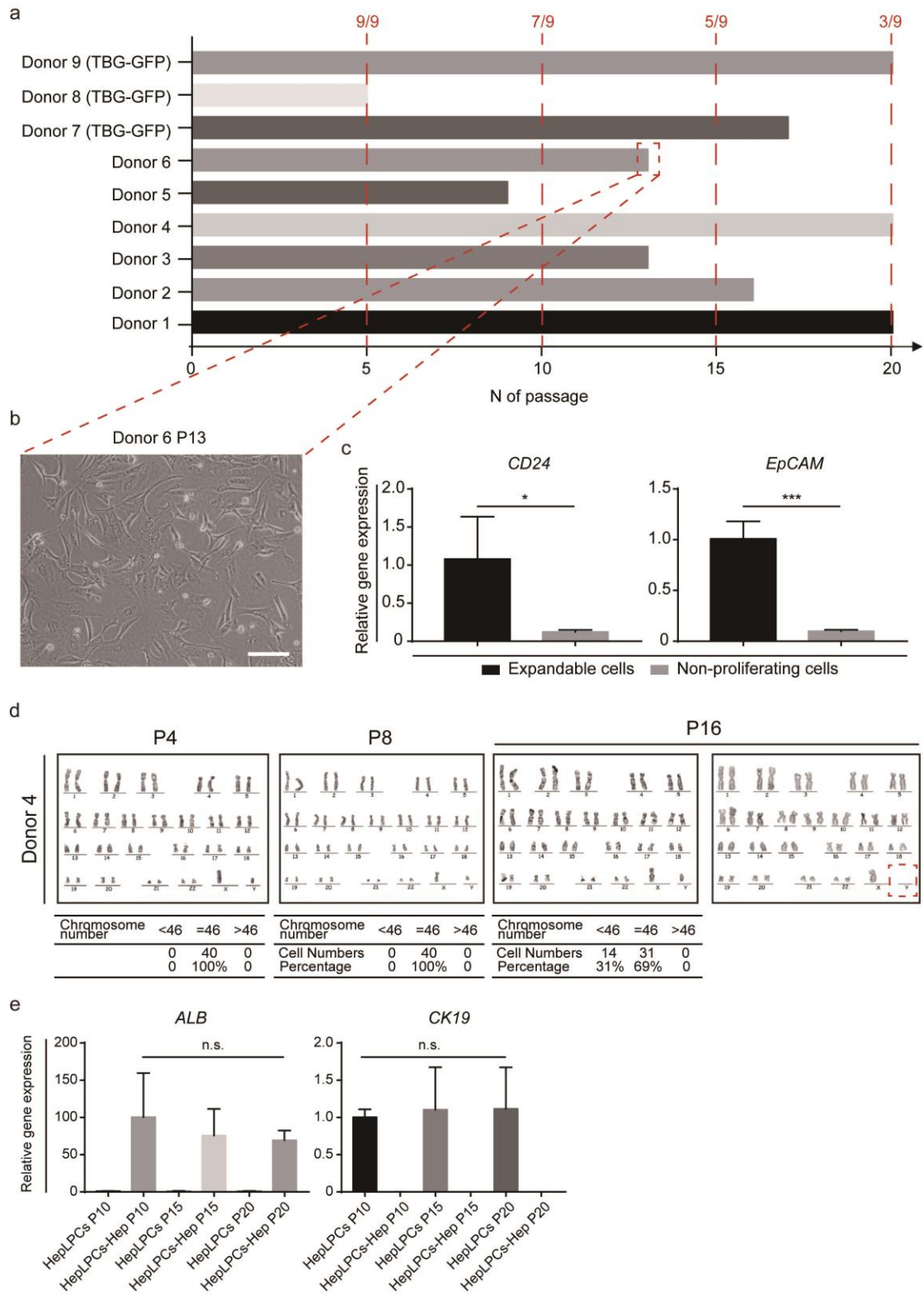


Fig. S3



Supplementary information, fig. S3 Individual variations in proliferative potential of HepLPCs from different donors, related to Fig. 1. (a) Expansion potential of HepLPCs. (b) Light microscopy images of HepLPCs derived from one donor in TEM at passage 13 with decreased cell proliferation capacity. Scale bar, 100µm. (c) QPCR analyses for the expression CD24 and EpCAM between expandable cells and non-proliferating cells. Error bars represent s.d. (* $p < 0.05$, *** $p < 0.001$, $n = 3$). (d) Representative karyotype images of different passage of HepLPCs from donor 4. (e) QPCR analyses for the expression of CK19 and ALB in HepLPCs without or with differentiation at passage 10, passage 15 and passage 20. Error bars represent s.d. (n.s., non-significant, $n = 3$).