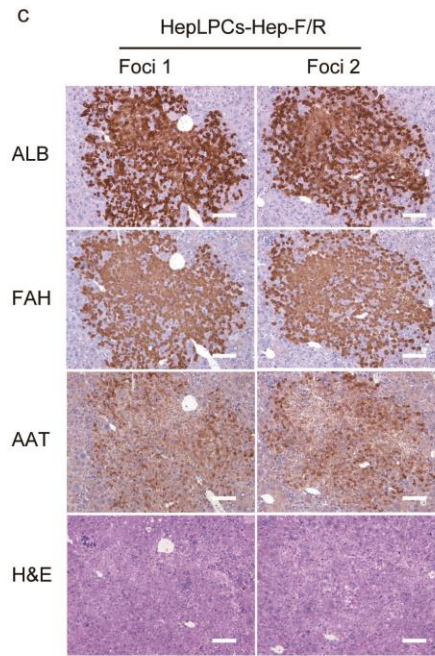
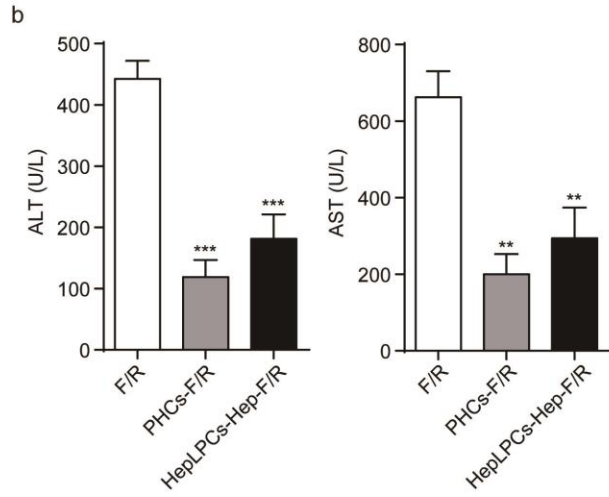
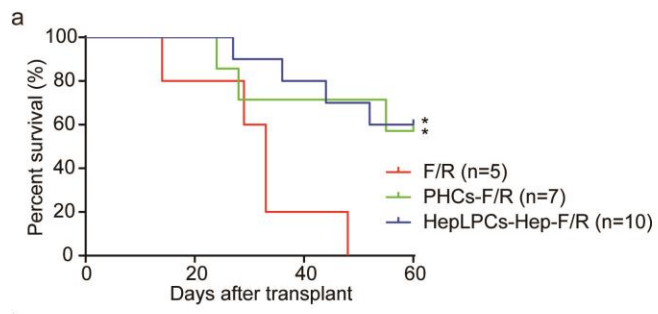


Fig. S9



Supplementary information, fig. S9 Survival studies, related to fig. 4. (a) Kaplan-Meier survival curve of F/R mice that received no cells, PHCs or HepLPCs-Hep after NTBC withdrawal. (b) Serum levels of ALT and AST in moribund control F/R mice (n = 4), surviving PHCs-F/R mice (n = 4), and surviving HepLPCs-Hep-F/R mice (n = 6). (c) The integration of HepLPCs-Hep cells in F/R livers was determined by H&E and immunostaining for human ALB, FAH and AAT in serial sections. Scale bars, 100 μ m.