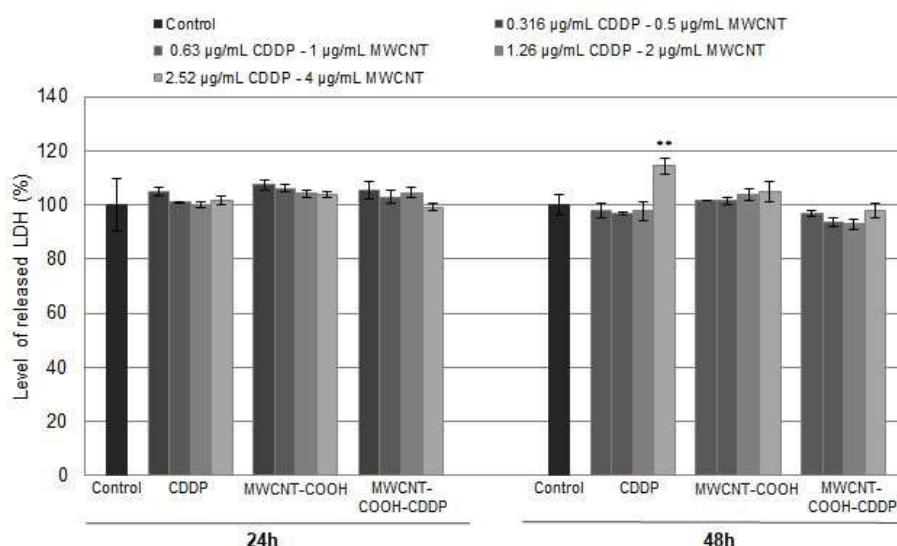
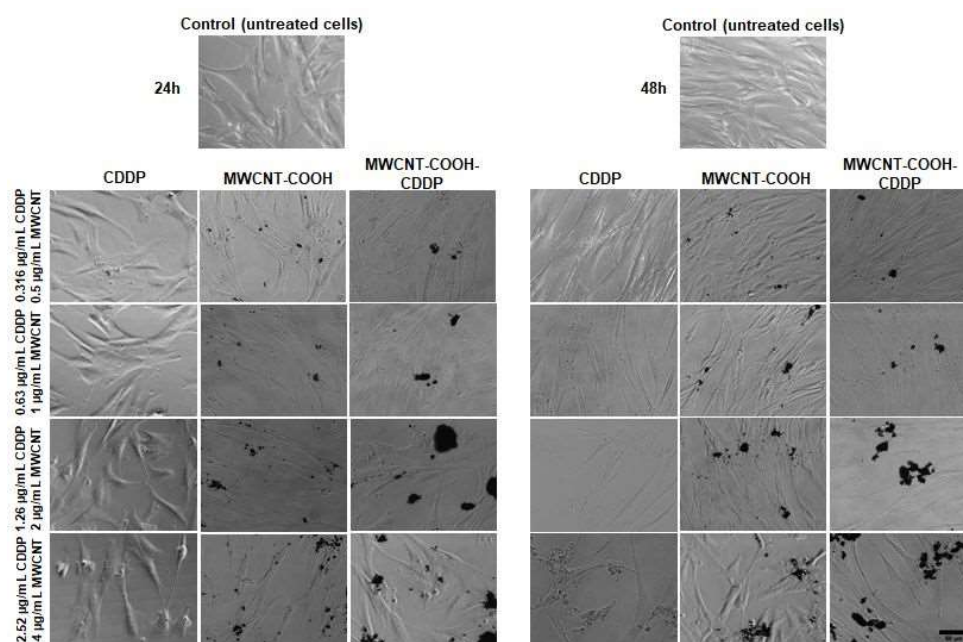


# Supplementary Materials: Cisplatin Loaded Multiwalled Carbon Nanotubes Induce Resistance in Triple Negative Breast Cancer Cells

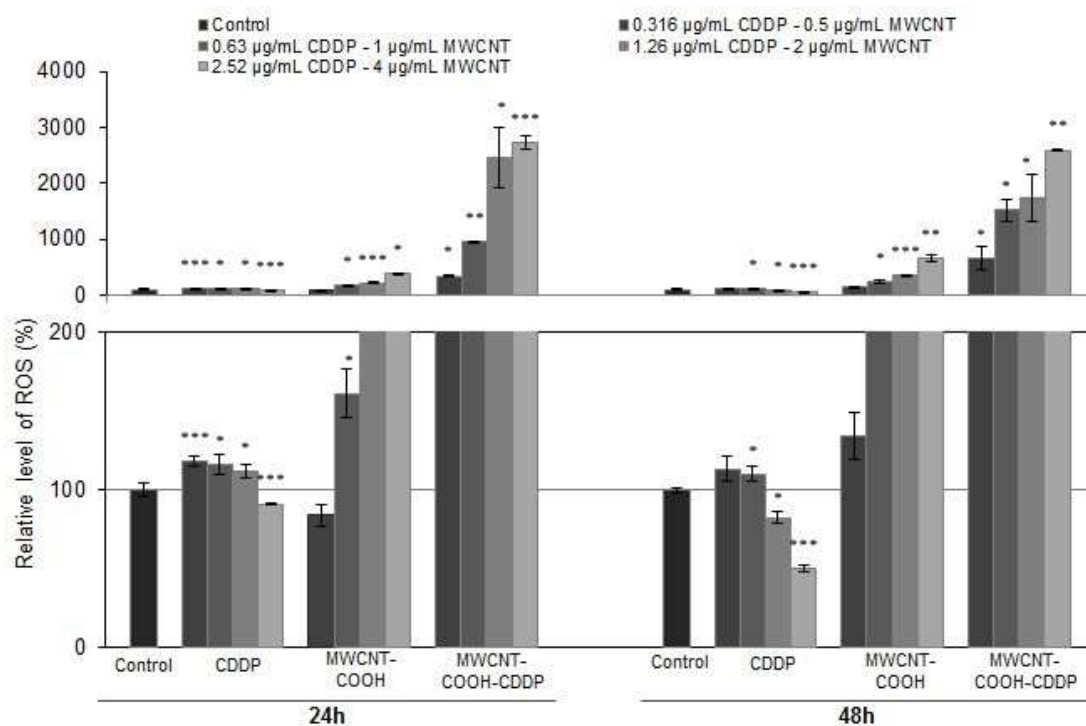
Madalina Andreea Badea, Mariana Prodana, Anca Dinischiotu, Carmen Crihana, Daniela Ionita \* and Mihaela Balas



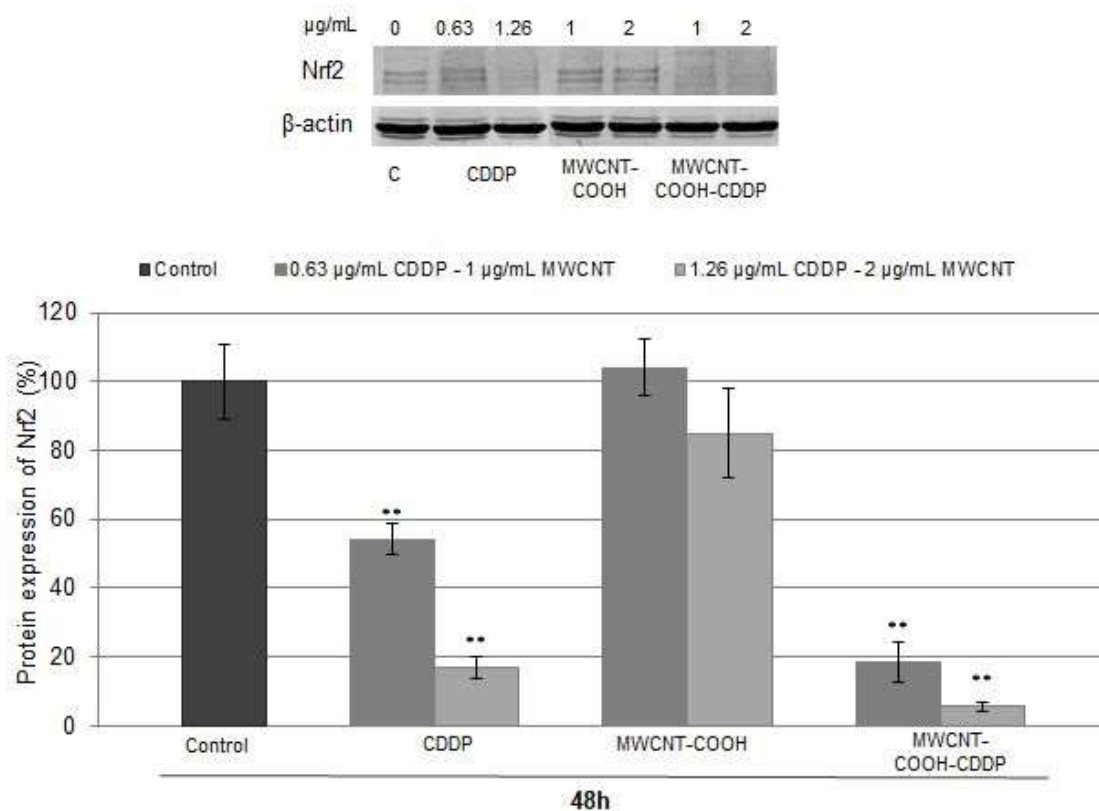
**Figure S1.** The level of LDH released in culture medium by non-tumor MRC-5 cells after 24 h and 48 h of exposure of various concentrations of CDDP (0.316 – 2.52 µg/mL) and MWCNT (0.5 – 4 µg/mL). The results are calculated as the mean ± SD of 3 replicates and represented relative to control (untreated cells). \*\*  $p < 0.01$  vs. control.



**Figure S2.** Bright-field images presenting MRC-5 cells morphology after exposure to various concentrations of CDDP (0.316 – 2.52 µg/mL) and MWCNTs (0.5 – 4 µg/mL) for 24 h and 48 h. Control represents untreated cells. Aggregates of MWCNTs are visible over the cell fields. Scale bar: 50 µm.



**Figure S3.** Relative level of ROS generated after the exposure of MRC-5 cells to CDDP (0.316 – 2.52 µg/mL) and MWCNTs (0.5 – 4 µg/mL) for 24 h and 48 h. The results are calculated as the mean  $\pm$  SD of 3 replicates and represented relative to control. \*  $p < 0.05$ , \*\*  $p < 0.01$ , \*\*\*  $p < 0.001$  vs. control. The lower graph presents a magnified image of the scale range between 0 - 200 from the upper graph.



**Figure S4.** Relative protein expression of Nrf2 after non-tumor MRC-5 cells exposure to 0.63, 1.26 µg/mL CDDP and 1, 2 µg/mL MWCNTs for 48 h. The graph is the correspondent quantification of blots images. The results are calculated as the mean  $\pm$  SD of 3 replicates and represented relative to control. \*\*  $p < 0.01$  vs. control.