

Supplementary material

Evaluation of [⁶⁸Ga]Ga-DOTA-TCTP-1 for the detection of metalloproteinase 2/9 expression in mouse atherosclerotic plaques

Max Kiugel¹, Sanna Hellberg¹, Meeri Käkälä¹, Heidi Liljenbäck^{1,2}, Tiina Saanijoki¹, Xiang-Guo Li³, Johanna Tuomela³, Juhani Knuuti^{1,5}, Antti Saraste^{1,5,6,7}, Anne Roivainen^{1,2,5,*}

¹ Turku PET Centre, University of Turku, Turku, Finland; max.kiugel@utu.fi (M.K.); sanna.hellberg@utu.fi (S.H.); meeri.kakela@utu.fi (M.K.); halilj@utu.fi (H.L.); tiina.saanijoki@utu.fi (T.S.); juhani.knuuti@utu.fi (J.K.); antti.saraste@utu.fi (A.S.); anne.roivainen@utu.fi (A.R.)

² Turku Center for Disease Modeling, University of Turku, Turku, Finland

³ Turku PET Centre, Åbo Akademi University, Turku, Finland; xiali@utu.fi (X-G.L.)

⁴ Department of Cell Biology and Anatomy, University of Turku, Turku, Finland; johanna.tuomela@utu.fi (J.T.)

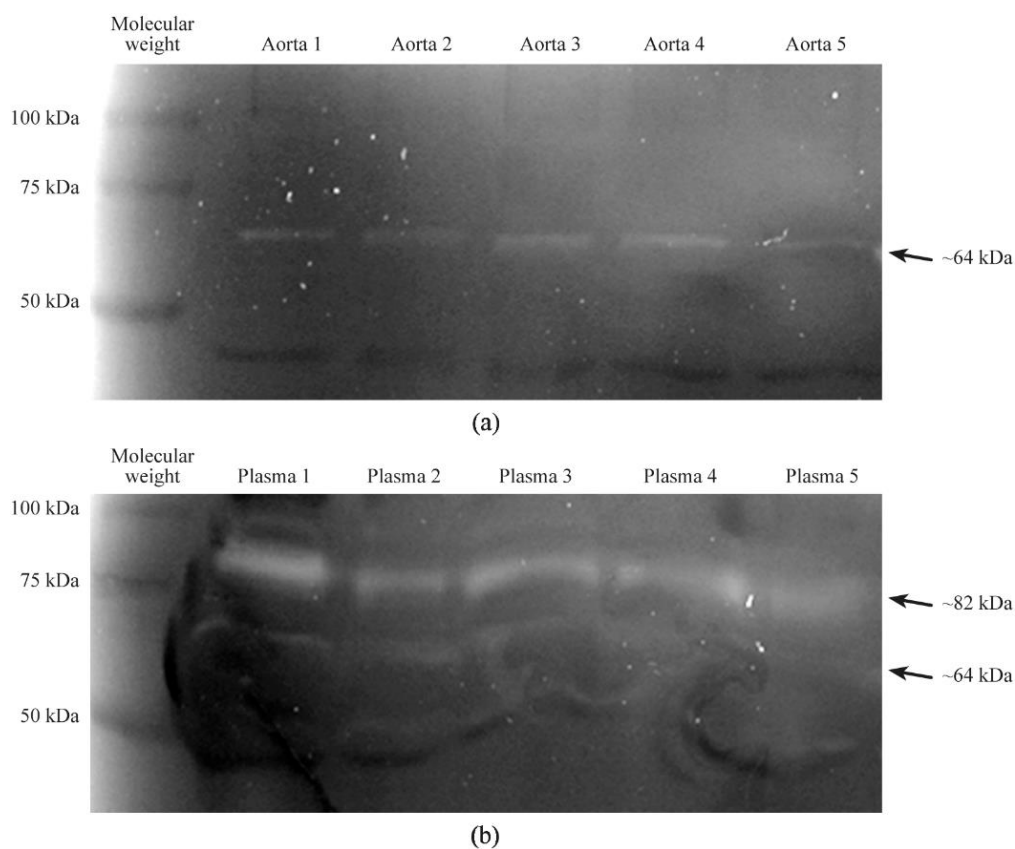
⁵ Turku PET Centre, Turku University Hospital, Turku, Finland

⁶ Heart Center, Turku University Hospital, Turku, Finland

⁷ Institute of Clinical Medicine, University of Turku, Turku, Finland

* Correspondence: anne.roivainen@utu.fi; Tel.: +358-2-3132862

Received: 23 November 2018; Accepted: 29 November 2018; Published: date



Supplementary Figure 1. Zymographs of atherosclerotic mouse aortas (a) and plasma (b). The molecular weights of activated MMP-2 and MMP-9 are 64 kDa and 82 kDa, respectively. Dark bands represent molecular weight markers, and white bands are positive signals where enzymatic activity has degraded the gel structure.