

# Supplementary: Macrophage Migration Inhibitory Factor (MIF) Inhibition in a Murine Model of Bleomycin-Induced Pulmonary Fibrosis

Sven Günther <sup>1,2,3</sup>, Jennifer Bordenave <sup>4,5</sup>, Thông Hua-Huy <sup>1,2,3</sup>, Carole Nicco <sup>1,2</sup>, Amélie Cumont <sup>4,5</sup>, Raphaël Thuillet <sup>4,5</sup>, Ly Tu <sup>4,5</sup>, Timothée Quatremarre <sup>4,5</sup>, Thomas Guilbert <sup>1,2,6</sup>, Gaël Jalce <sup>7</sup>, Frédéric Batteux <sup>1,2</sup>, Marc Humbert <sup>4,5,8</sup>, Laurent Savale <sup>4,5,8</sup>, Christophe Guignabert <sup>4,5,\*†</sup> and Anh-Tuan Dinh-Xuan <sup>1,2,3,\*†</sup>

<sup>1</sup> National Institute for Health and Medical Research (INSERM) UMR\_S 1016, Cochin Institute, 75014 Paris, France; sven.gunther@aphp.fr (S.G.); huythonghua@yahoo.com (T.H.-H.); carole.nicco@parisdescartes.fr (C.N.); thomas.guilbert@inserm.fr (T.G.); frederic.batteux@aphp.fr (F.B.); anh-tuan.dinh-xuan@aphp.fr (A.-T. D.X.)

<sup>2</sup> Université Paris-Descartes, Sorbonne Paris Cité, 75014 Paris, France

<sup>3</sup> Service de Physiologie-Explorations Fonctionnelles, Hôpital Cochin, Assistance Publique-Hôpitaux de Paris (AP-HP), 75014 Paris, France

<sup>4</sup> INSERM UMR\_S 999, Hôpital Marie Lannelongue, 92350 Le Plessis-Robinson, France; jennifer.bordenave@inserm.fr (J.B.); amelie.cumont@laposte.net (A.C.); raphael.thuillet@inserm.fr (R.T.); ly.tu@inserm.fr (L.T.); timothee.quatremarre@inserm.fr (T.Q.); marc.humbert@bct.aphp.fr (M.H.); laurent.savale@gmail.com (L.S.)

<sup>5</sup> Faculté de Médecine, Université Paris-Sud, Université Paris-Saclay, 94270 Le Kremlin-Bicêtre, France

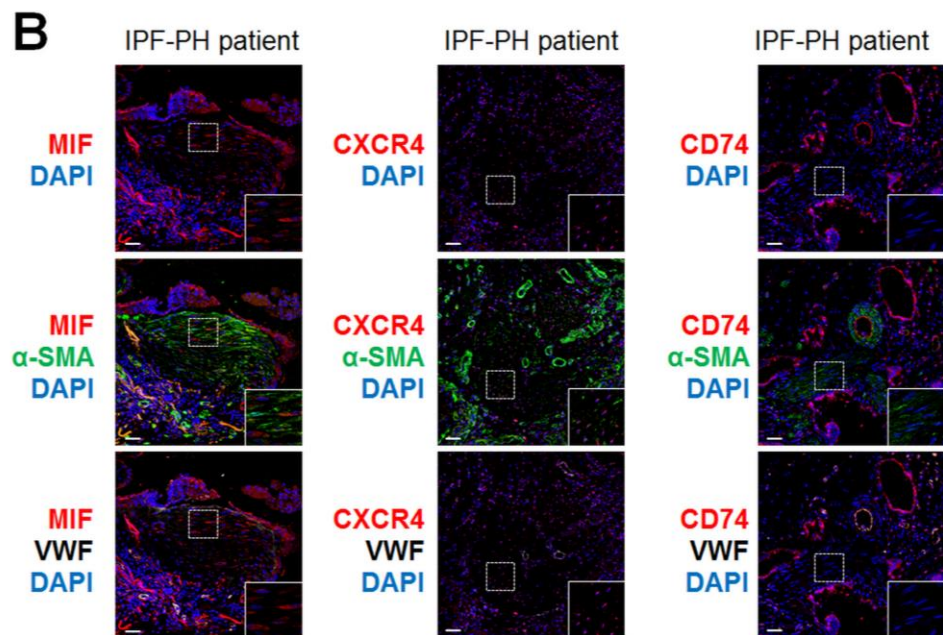
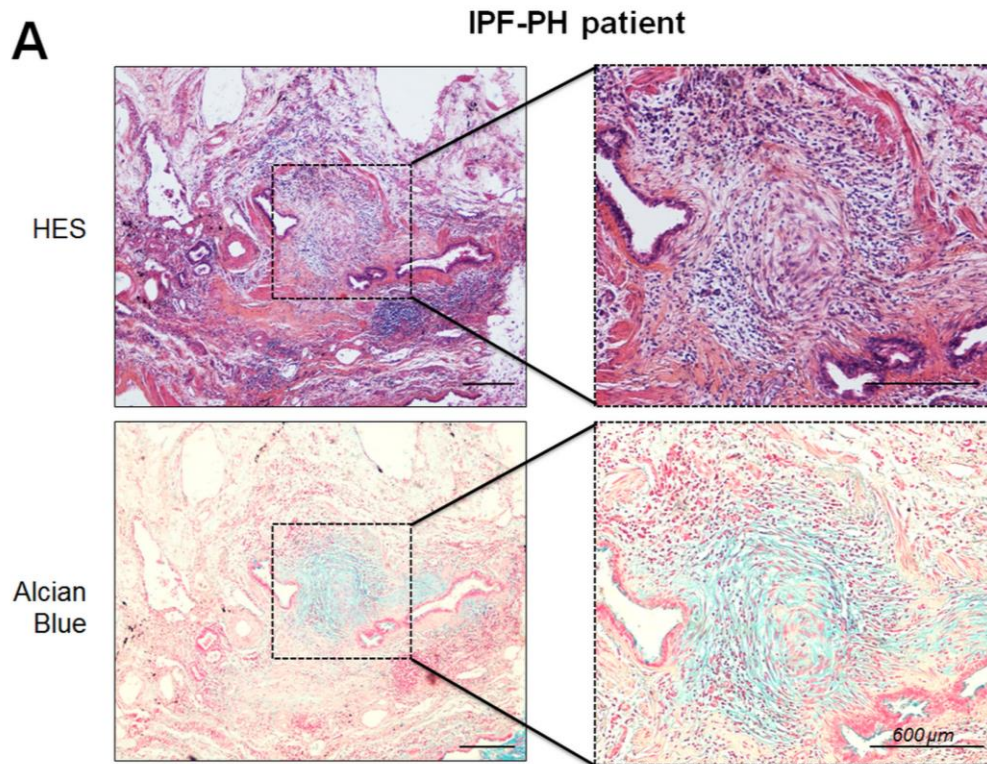
<sup>6</sup> National Centre for Scientific Research (CNRS) UMR 8104, 75014 Paris, France

<sup>7</sup> Apaxen, 6041 Gosselies, Belgique; el.jalce@apaxen.com (G.J.)

<sup>8</sup> Service de Pneumologie, Centre de Référence de l'Hypertension Pulmonaire, DHU Thorax Innovation, Hôpital Bicêtre, Assistance Publique-Hôpitaux de Paris (AP-HP), 94270 Le Kremlin-Bicêtre, France

\* Correspondence: [christophe.guignabert@inserm.fr](mailto:christophe.guignabert@inserm.fr); Tel: +33-1-40948833; Fax: +33-1-40942522;

† These authors contributed equally to this work.



**Figure S1.** Expressions of MIF, CXCR4, and CD74 in fibrotic foci in lungs of patients with idiopathic pulmonary fibrosis with pulmonary hypertension (IPF-PH). **(A)** Alcian blue staining of a lung with IPF-PH fibroblastic foci. **(B)** Representative images of MIF (red; upper panel), CXCR4 (red; middle panel), and CD74 (red; lower panel) staining with  $\alpha$ -smooth muscle actin ( $\alpha$ -SMA; green) or von Willebrand factor (vWF; white) and DAPI (blue) in IPF-PH lungs ( $n = 3$ ). Scale bar = 20  $\mu$ m in all sections. DAPI = 4',6-diamidino-2-phenylindole.