

Weinerman et al., Supplemental Table S1. Genes that showed differences in gene expression between optimal and suboptimal embryos. (Note: genes without symbols are not included.)

Gene symbol	Fold change*
<i>Hpse</i>	-11.67
<i>Slc1a5</i>	-11.19
<i>Nupr1</i>	-7.26
<i>Reep6</i>	-6.46
<i>Parp8</i>	6.27
<i>Tbx20</i>	5.21
<i>Ddit4</i>	-4.70
<i>Slc1a5</i>	-4.65
<i>Pycr1</i>	-4.30
<i>Rcn1</i>	-3.91
<i>P2rx3</i>	-3.68
<i>Acsl5</i>	-3.41
<i>Shmt2</i>	-3.38
<i>Trib3</i>	-3.34
<i>Vegfa</i>	-3.33
<i>Sox7</i>	-3.26
<i>St6galnac2</i>	2.82
<i>Psat1</i>	-2.58
<i>Pccb</i>	-2.45
<i>Trmt2b</i>	-2.39
<i>Cebpb</i>	-2.30
<i>Slc30a5</i>	-2.22
<i>Tpm3</i>	-2.12
<i>Slc3a2</i>	-2.11
<i>Trp53bp2</i>	2.06
<i>Gys1</i>	-2.00
<i>Tnks</i>	-1.89
<i>BC016579</i>	-1.88
<i>Tmsb4x</i>	-1.80
<i>Pck2</i>	-1.79
<i>Gars</i>	-1.76
<i>Ap1m1</i>	-1.75
<i>Pi4ka</i>	-1.69
<i>Gng2</i>	-1.67
<i>Mrpl19</i>	1.66
<i>Apobr</i>	-1.58
<i>Aup1</i>	-1.57
<i>Dmgdh</i>	1.52
<i>Mgat3</i>	-1.51
<i>Gbas</i>	-1.49
<i>Ldb1</i>	1.40
<i>Atp1a1</i>	-1.38
<i>Olfir544</i>	1.38
<i>Cplx3</i>	1.37
<i>Wfdc2</i>	-1.33
<i>Cntnap5a</i>	1.29
<i>Myh2</i>	1.25
<i>Cldn5</i>	1.2
<i>Arid3c</i>	1.20
<i>Tcrb-J</i>	1.16

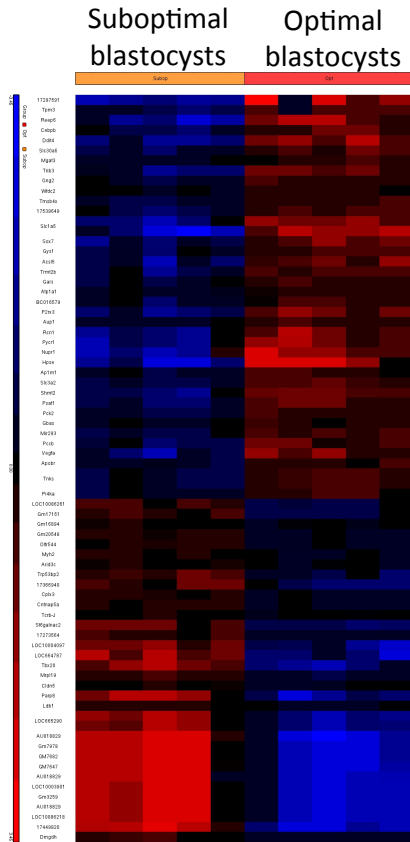
*Fold-change represents suboptimal compared to optimal embryos.

WEINERMAN ET AL., SUPPLEMENTAL FIGURE LEGENDS

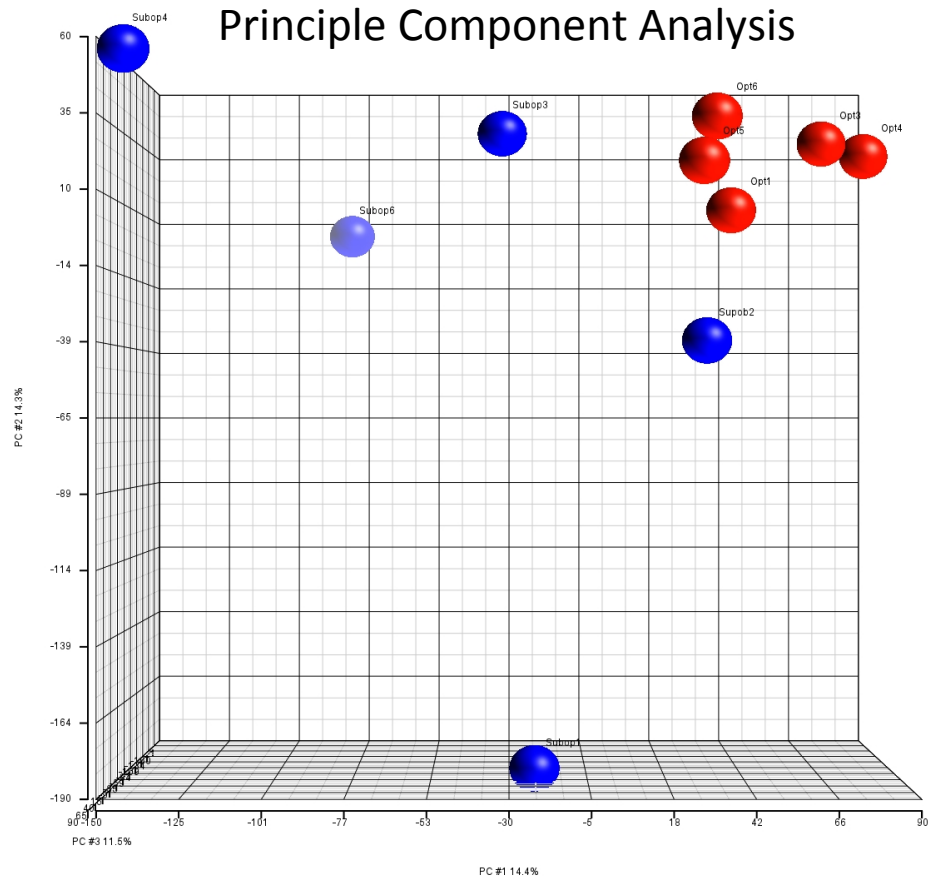
Supplemental Figure S1. Microarray of gene expression in optimal (n=5) and suboptimal (n=5) blastocysts. **A)** Heat map of 74 genes with differential expression between optimal and suboptimal blastocysts; up-regulated genes are shown in red and down-regulated genes in blue. **B)** Principle component analysis demonstrating clustering of the optimal embryos (red) compared to suboptimal embryos (blue).

Supplemental Figure S2. Trophoblast and inner cell mass cell counts. **A)** Confocal images of optimal and suboptimal blastocysts stained for trophectoderm (CDX2) and DNA (TO-PRO-3). **B)** Cell numbers did not differ between optimal (n=5) and suboptimal (n=5) embryos. Data are expressed as mean \pm SEM.

A)

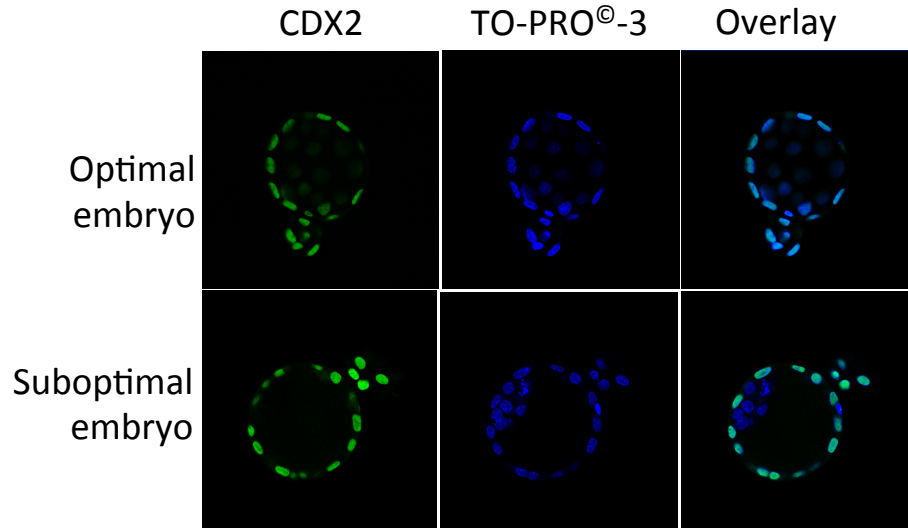


B)



Supplemental Figure S1

A)



Supplemental Figure S2

B)

