

SUPPORTING INFORMATION

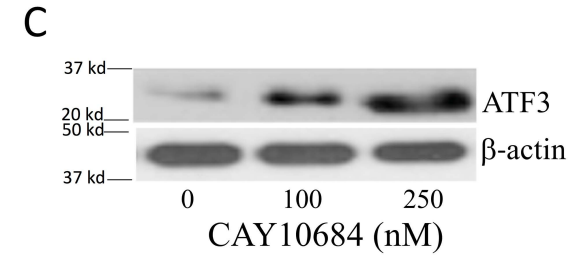
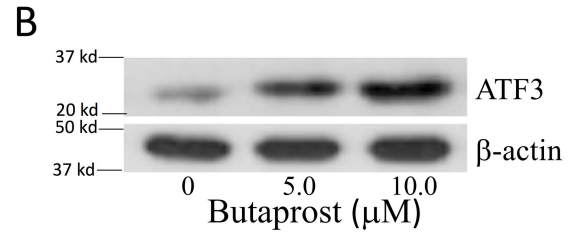
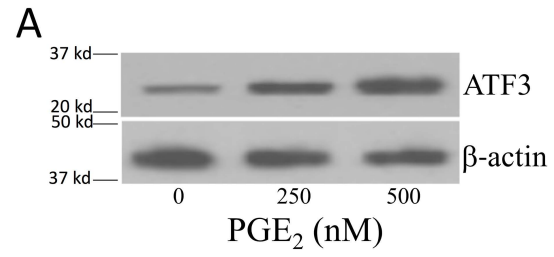
Prostaglandin E₂ down-regulates sirtuin 1 (SIRT1) leading to elevated levels of aromatase, providing insights into the obesity-breast cancer connection*

Kotha Subbaramaiah¹, Neil M. Iyengar², Monica Morrow³, Olivier Elemento⁴, Xi Kathy Zhou⁵ and Andrew J. Dannenberg¹

From the Departments of ¹Medicine, ⁴Physiology and Biophysics, ⁵Healthcare Policy & Research, Weill Cornell Medical College, New York, NY 10065, and the Departments of ²Medicine and ³Surgery, Memorial Sloan Kettering Cancer Center, New York, NY 10065

LEGEND TO SUPPORTING FIGURE

Figure S1. PGE₂ acts via EP₂ and EP₄ to induce ATF3 in human breast ASCs. In A-C, primary human breast ASCs were used. A, cells were treated with indicated concentrations of PGE₂ for 2h. B, cells were treated with indicated concentrations of butaprost, an EP₂ agonist or CAY10684, an EP₄ agonist (C) for 2h. Cell lysates were subjected to western blotting as indicated.



SUPPORTING FIGURE 1