

Supplementary Online Content

Spindle TR, Cone EJ, Schlienz NJ, et al. Acute effects of smoked and vaporized cannabis in healthy adults who infrequently use cannabis: a crossover trial. *JAMA Netw Open*. 2018;1(7):e184841. doi:10.1001/jamanetworkopen.2018.4841

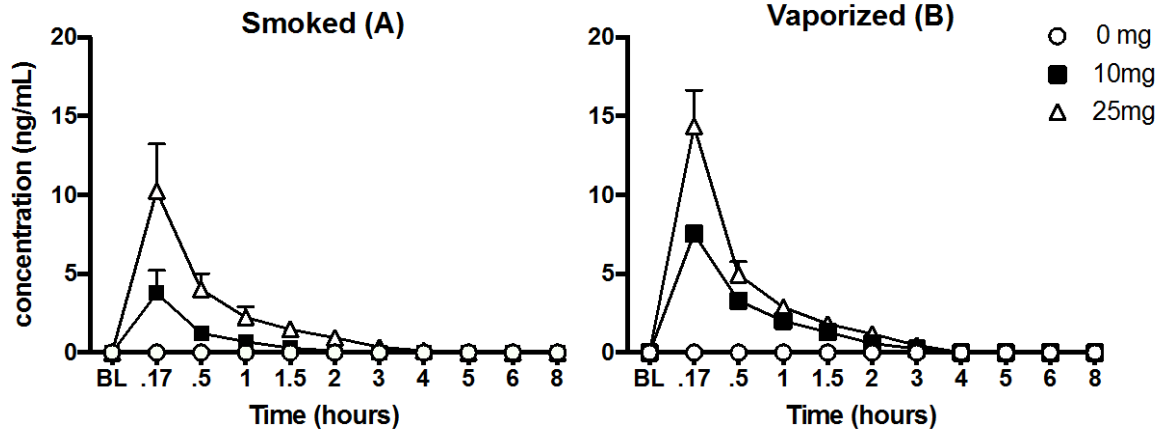
eFigure. Mean Whole Blood Δ 9-Tetrahydrocannabinol (THC) Concentration Over Time, Across Dose for (A) Smoked and (B) vaporized Conditions

eTable. Correlations (Pearson r) Between Individual Change From Baseline Values for Whole Blood Δ 9-tetrahydrocannabinol (THC) Levels and Pharmacodynamic Measures

This supplementary material has been provided by the authors to give readers additional information about their work.

eFigure. Mean Whole Blood Δ 9-Tetrahydrocannabinol (THC) Concentration Over Time, Across Dose for (A) Smoked and (B) Vaporized Conditions

Whole Blood THC



Horizontal axes are not accurate time scales and represent the time points at which blood was sampled. BL=baseline time point; ng/mL=nanograms/milliliter; mg=milligrams.

eTable. Correlations (Pearson r) Between Individual Change From Baseline Values for Whole Blood Δ 9-tetrahydrocannabinol (THC) Levels and Pharmacodynamic Measures

	Whole Blood THC Concentration	
	Smoked	Vaporized
10mg THC dose		
Drug Effect (DEQ)	0.38*	0.54*
Heart Rate	0.25*	0.40*
DSST (Total Correct)	-0.06	-0.23
DAT (Distance from stimulus)	0.08	0.05
DAT (Total Correct)	0.07	0.01
PASAT (Total Correct)	0.11	-0.07
25mg THC dose		
Drug Effect (DEQ)	0.51*	0.52*
Heart Rate	0.37*	0.37*
DSST (Total Correct)	-0.18	-0.32*
DAT (Distance from stimulus)	0.01	0.14
DAT (Total Correct)	-0.05	-0.14
PASAT (Total Correct)	-0.07	-0.19

Note. Asterisks (*) denote statistical significance (all $ps < .05$). DEQ=Drug Effect Questionnaire; DSST=Digit Symbol Substitution Task; PASAT=Paced Serial Auditory Addition Task”; mg=milligram. A Holm-Bonferroni correction was applied to p values for these analyses to reduce the chance of committing a type 1 error.