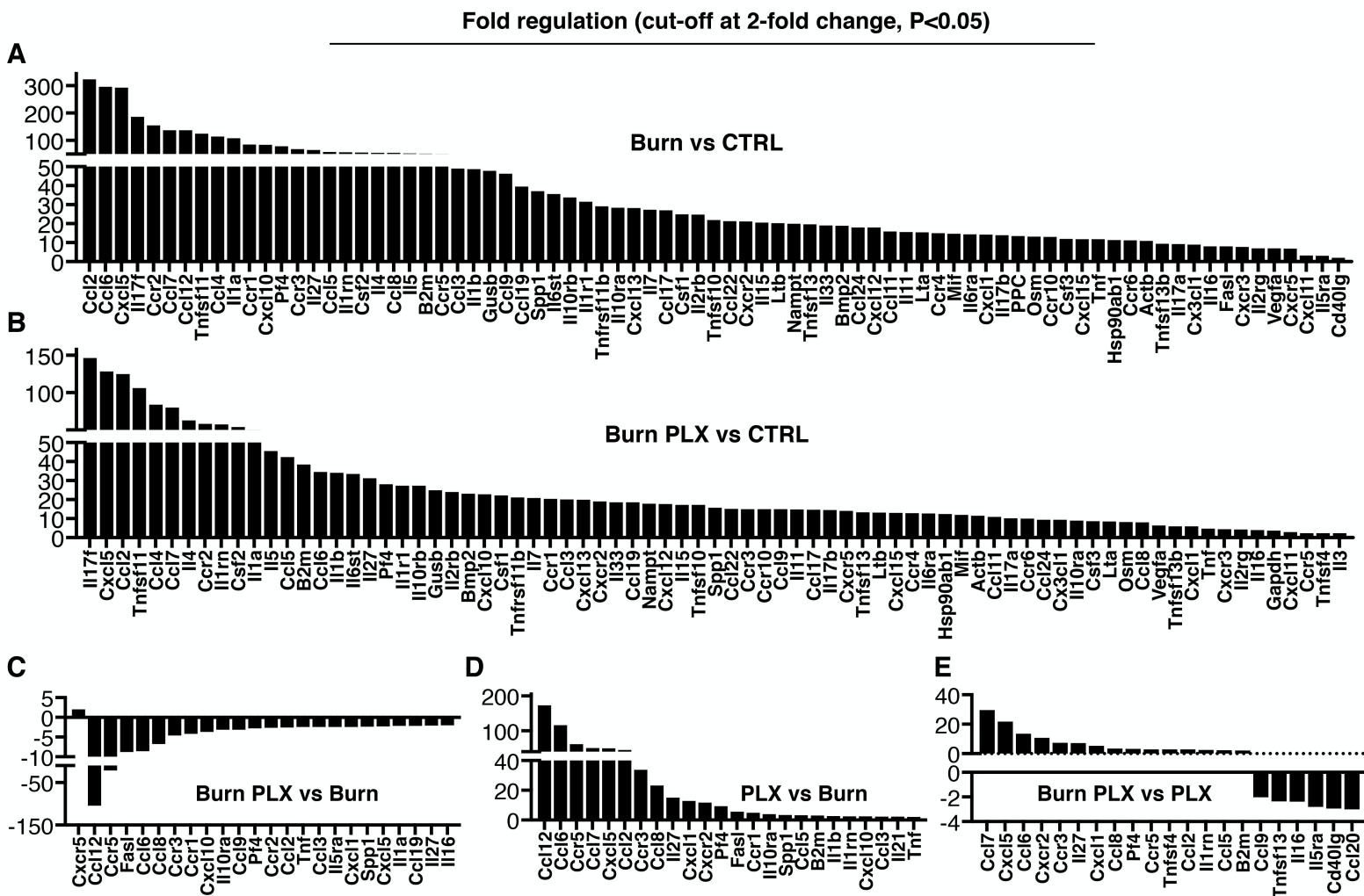


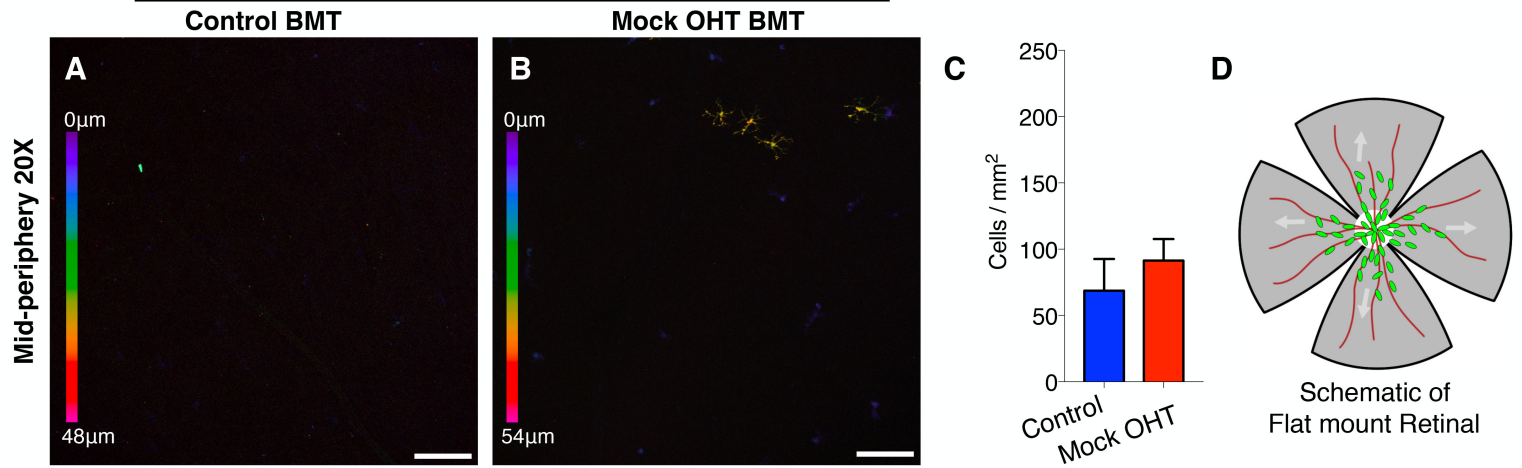
Supplemental Figure 1. Gene expression changes after microglia depletion



Retinal gene expression analysis of major inflammatory markers using RT2 Profiler PCR Arrays in 1) control naive C57BL/6 (CTRL), 2) microglia depleted C57BL/6 (PLX), 3) corneal burned (Burn), and 4) corneal burned with depleted microglia mice (Burn PLX). Significant gene expression differences between (A) Burn and CTRL, (B) Burn PLX and CTRL, (C) Burn PLX and Burn, (D) PLX and Burn, and (E) Burn PLX and PLX groups. Significance cut-off limit was set to 2-fold expression change,  $P < 0.05$ . Single experiment with 3 retinas per group.

Supplemental Figure 2. Mock ocular hypertension does not causes peripheral CX3CR1<sup>+</sup> infiltration and into the retinal.

Retina BMT CX3CR1<sup>+/EGFP</sup> 2 months post Mock OHT



Mock ocular hypertension (OHT) experiments in BMT CX3CR1<sup>+/EGFP</sup> mice performed by placing the cannula in the anterior chamber for 45 minutes without elevating the intraocular pressure. (A-C) Mock OHT does not causes peripheral CX3CR1<sup>+</sup> monocytes infiltration into the retina at 2 months. (D) Schematic representation of flat mount retina used for confocal microscopy. BMT: bone marrow transfer, OHT: ocular hypertension. Three independent experiments with 1 mouse per group per experiment. (A, B) Scale bar: 100 μm. Student t-test.