

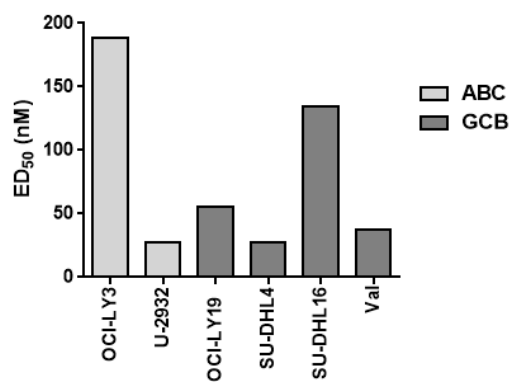
Supplemental Figures.

Supplemental Figure 1. (A) ED₅₀ values of DLBCL cell lines reported (apoptosis measured by flow cytometry) after 24 hour treatment with TAK-243 (B) SU-DHL10 cells were treated with TAK-243. Compound was washed out at the indicated timepoints and cells were cultured for a total of 24 hours. Apoptosis was then assessed by Annexin V staining. The data are mean±SE. *, p<0.05, **, p<0.01 compared to untreated control. (C) DLBCL cell lines were treated with TAK-243 for 4 hours. Proteins were lysed and subjected to immunoblotting.

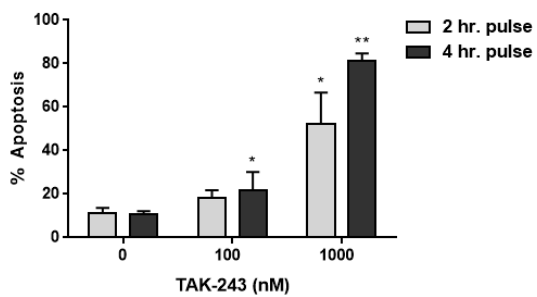
Supplemental Figure 2. (A) U-2932 and OCI-LY3 cells were engineered to express shMYC or vector control. Cells were treated with 100 nM TAK-243 for 24 hours, and apoptosis was assessed by Annexin V staining. Data are the mean±SE. * - p<0.05. (B) DLBCL cells were treated with SKT and TAK-243 for 24 hours. Apoptosis was assessed by Annexin V staining.

Supplemental Figure 1

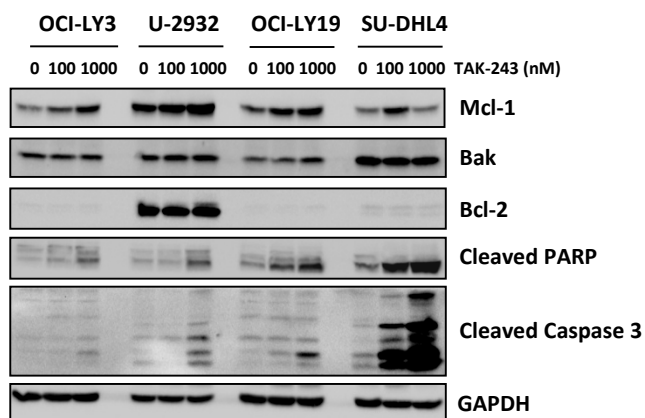
A



B



C



Supplemental Figure 2

