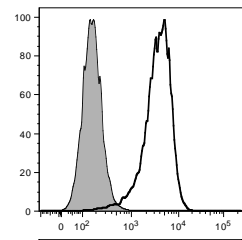
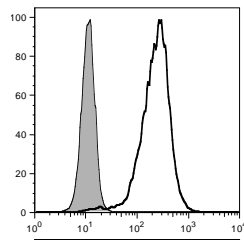
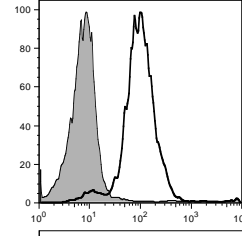
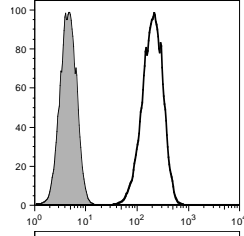


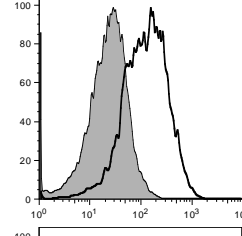
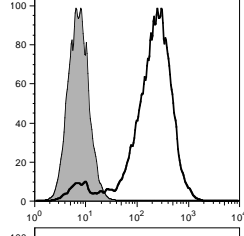
SK-MEL-37



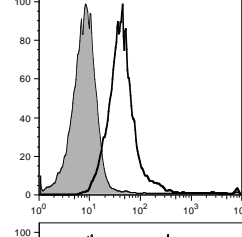
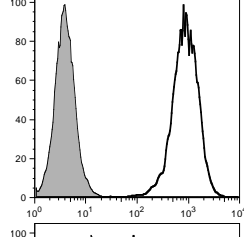
A375



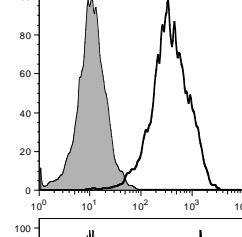
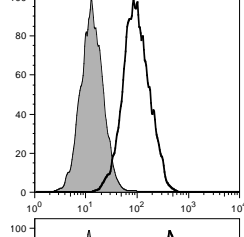
MZ-MEL-19



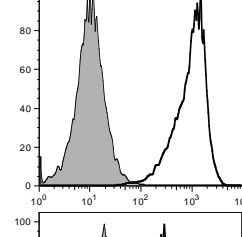
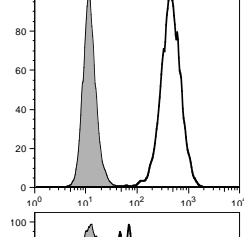
Mel624.38



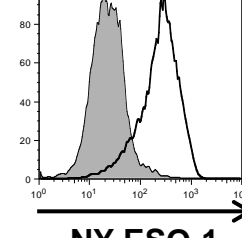
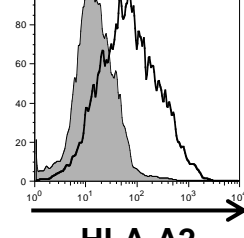
NW-MEL-38



MZ-MEL-9



19305EOC



HLA-A2

NY-ESO-1

Additional file 2. Intensity of HLA-A2 and NY-ESO-1 expression on A*02+NY-ESO-1+ cancer cell lines. Surface HLA-A2 (clone: BB7.2) and cytoplasmic NY-ESO-1 (clone: 219-510) expression was analyzed by flow cytometry. Shaded histogram is unstained control.