

## Supplemental Data

### **Adiponectin promotes muscle regeneration through binding to T-cadherin.**

Yoshimitsu Tanaka,<sup>1</sup> Shunbun Kita,<sup>\*,1,2</sup> Hitoshi Nishizawa,<sup>1</sup> Shiro Fukuda,<sup>1</sup> Yuya Fujishima,<sup>1</sup> Yoshinari Obata,<sup>1</sup> Hirofumi Nagao,<sup>1</sup> Shigeki Masuda,<sup>1</sup> Yuto Nakamura,<sup>1</sup> Yuri Shimizu,<sup>1</sup> Ryohei Mineo,<sup>1</sup> Tomoaki Natsukawa,<sup>3</sup> Tohru Funahashi,<sup>1,4</sup> Barbara Ranscht,<sup>5</sup> So-ichiro Fukada,<sup>6</sup> Norikazu Maeda,<sup>1,4</sup> and Iichiro Shimomura<sup>1</sup>

### **Contents**

**Fig. S1. Higher magnifications of Fig. 2C.**

**Fig. S2 APN overexpression and angiotensin II-signaling.**

**Fig. S3 Raw images and identified necrotic regions of Fig. 3 and Fig. 4**

**Fig. S4 Raw images of western blots.**

## Supplemental Figure legends

### Fig. S1. Higher magnifications of Fig. 2C.

**Fig. S2. APN overexpression and angiotensin II-signaling.** (A) Serum concentration of APN at 7 days after CTX-injury in Figure 3A. mean±s.e.m., n=3 (AII, β-gal, APN), n=6 (AII+, β-gal APN), \*\* $P < 0.01$ , \*\*\*  $P < 0.001$ , Turkey's test. (B) Axin2 expression levels 7 days after CTX-injury. mean±s.e.m., n=2 (AII-, APN), n=3 (AII-, β-gal), n=6(others), n.s; not significant; \*  $P < 0.05$ , Turkey's test. (C-F) Canonical angiotensin II signaling at 7 days after CTX-injury; ERK phosphorylation (C); p38MAP-kinase phosphorylation (D); NFκB p65 subunit phosphorylation (E); NOX2 protein (F). mean±s.e.m., n=6. Not statically significant (C-F).

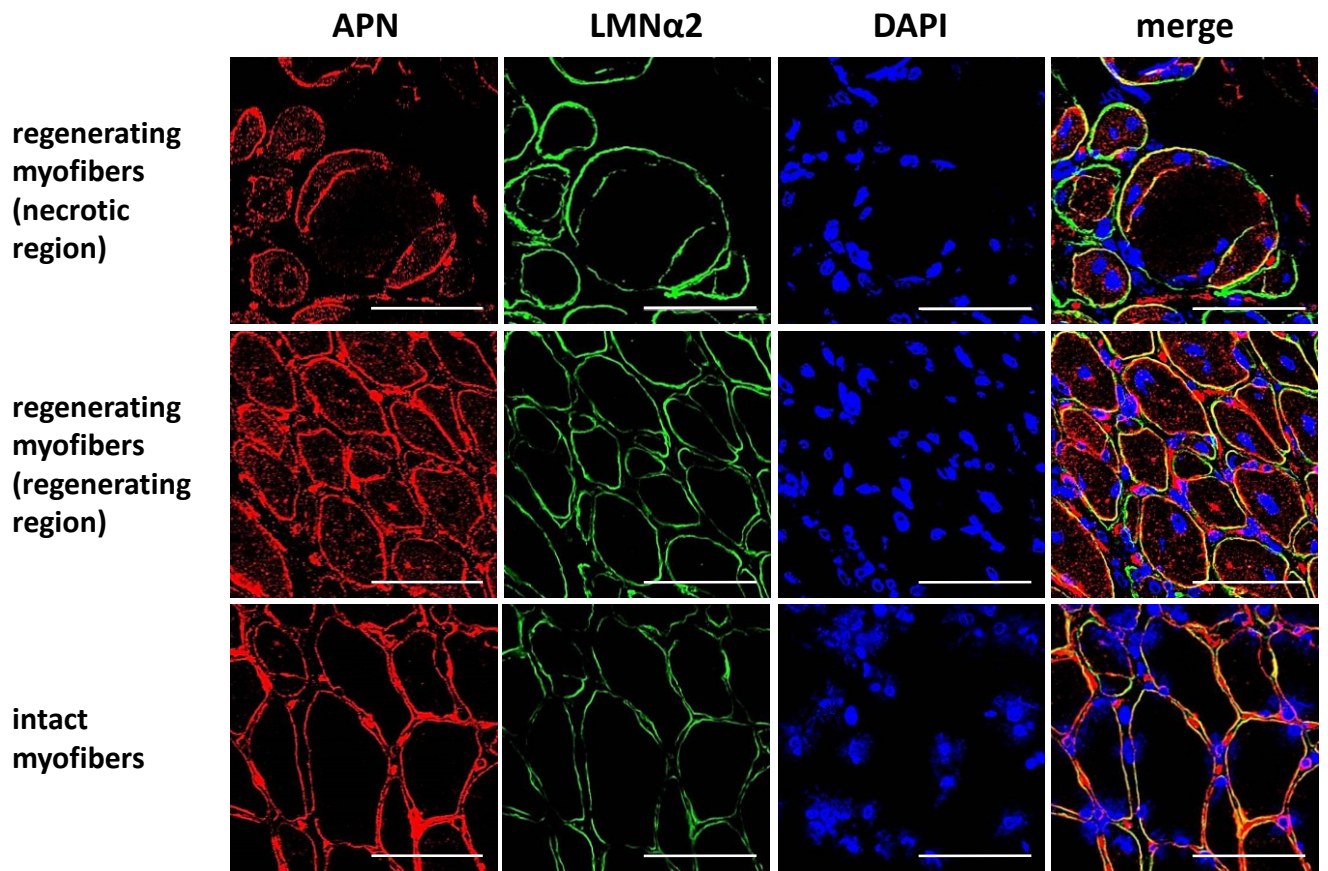
**Fig. S3. Raw images and identified necrotic regions of Fig. 3 and Fig. 4.** Identified necrotic region area were colored black, regenerating areas were colored blue. Sum of necrotic region area and regenerating area was defined as total area (total affected area by CTX injection).

**Fig. S4 Raw images of western blots.** Full images of western blot including every blots calculated in bar-graphs were shown.

# Tanaka et al. Fig. S1

## Higher magnifications of Fig. 2C

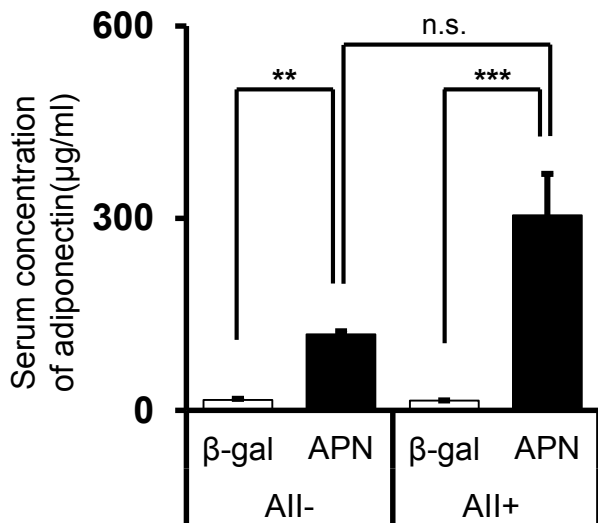
TA muscles of CTX day7



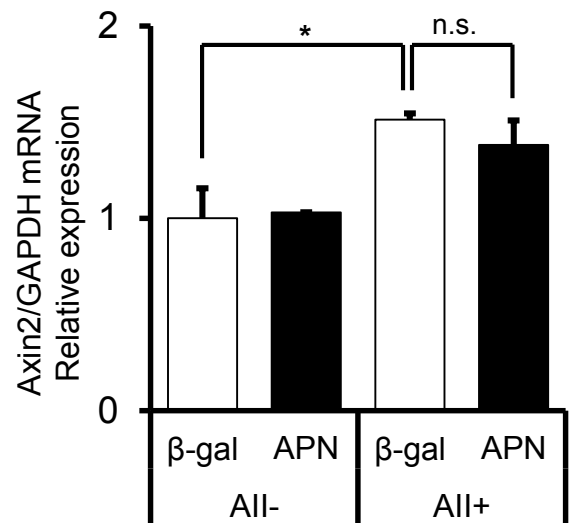
scale bar= 50 $\mu$ m

# Tanaka et al. Fig. S2

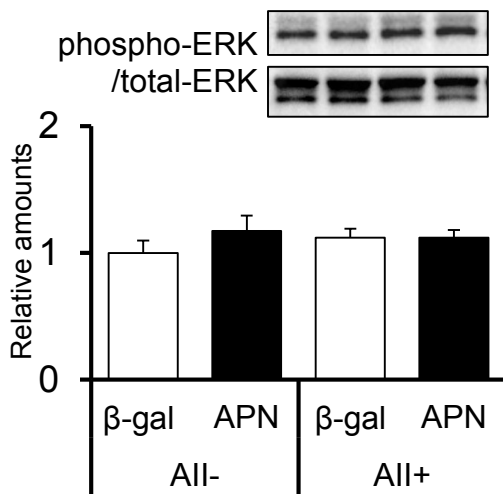
**A)** Serum concentration of adiponectin



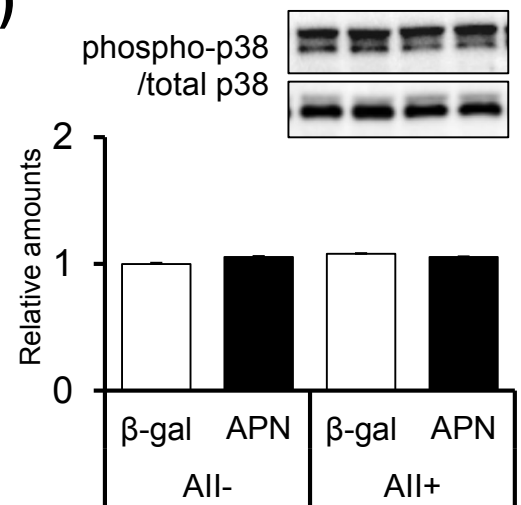
**B)** Axin2 mRNA



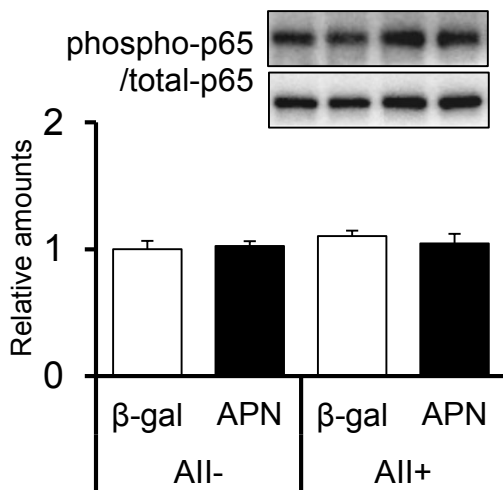
**C)**



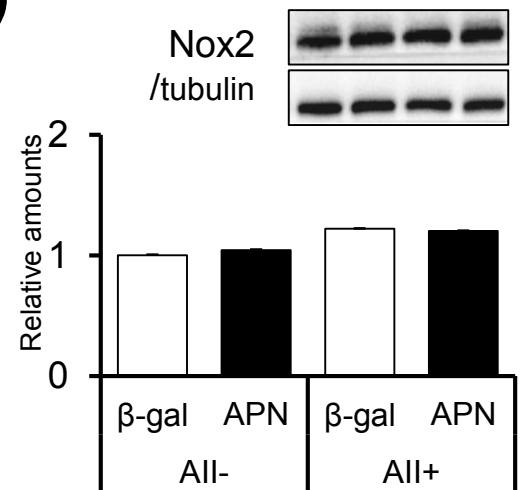
**D)**



**E)**

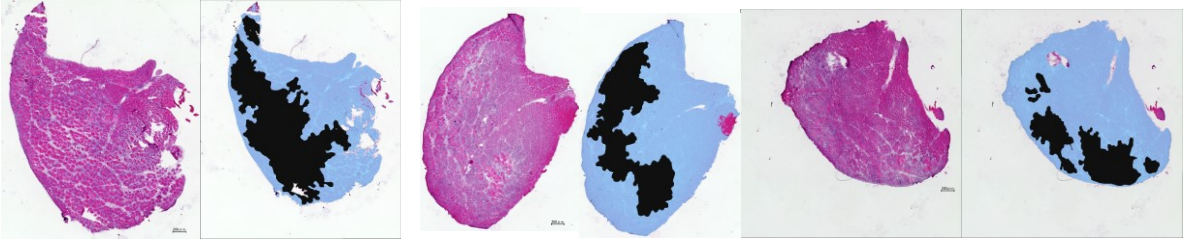


**F)**

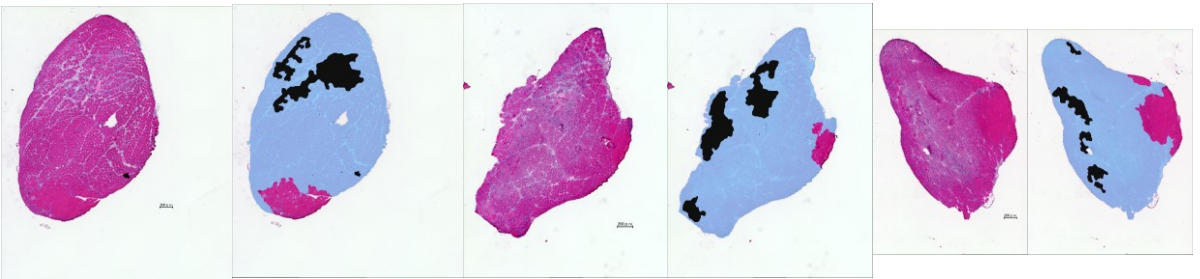


**A) WT AII (-)**

$\beta$ -gal

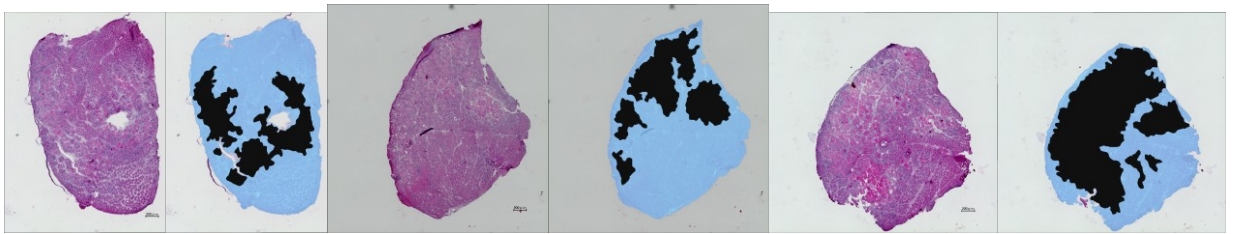
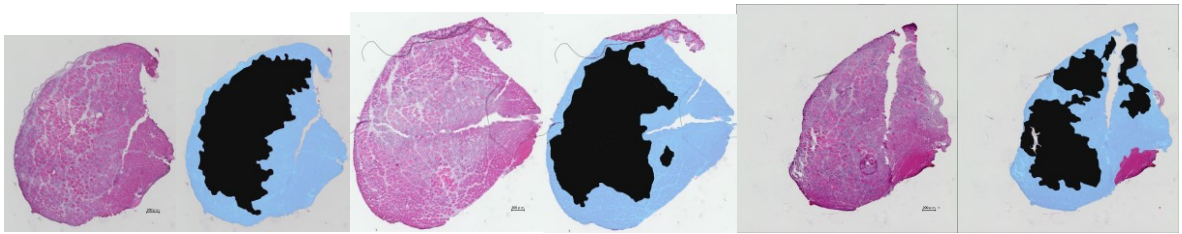


APN

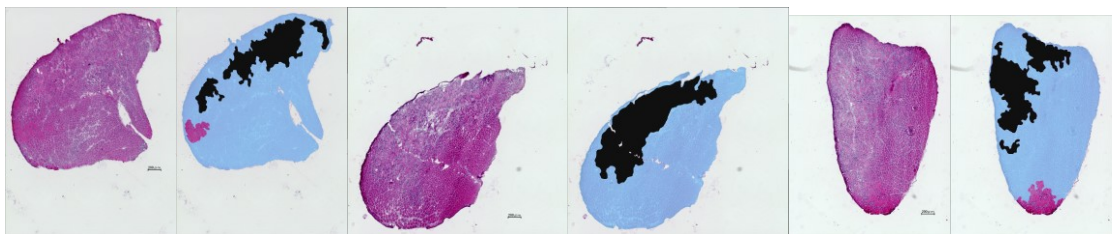
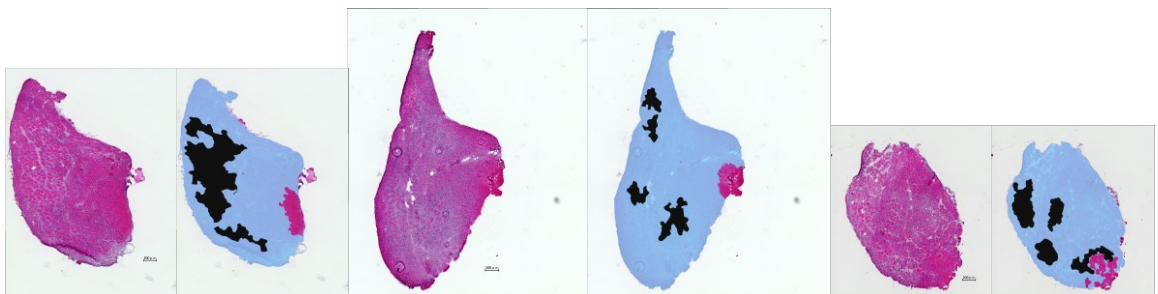


## B) WT AII (+)

$\beta$ -gal

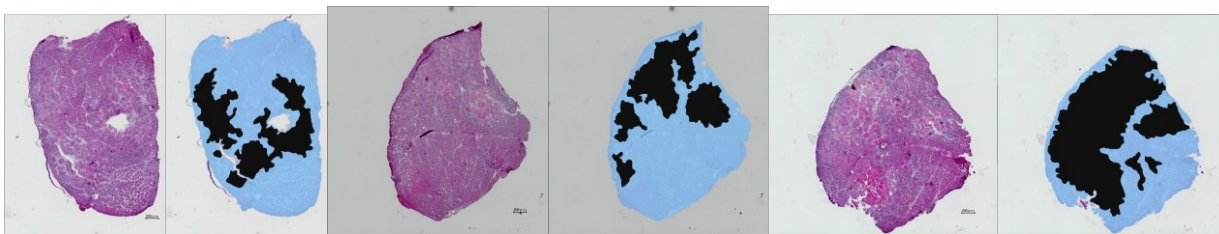
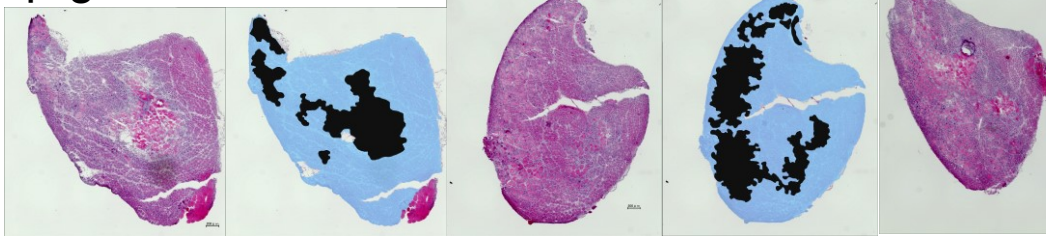


APN

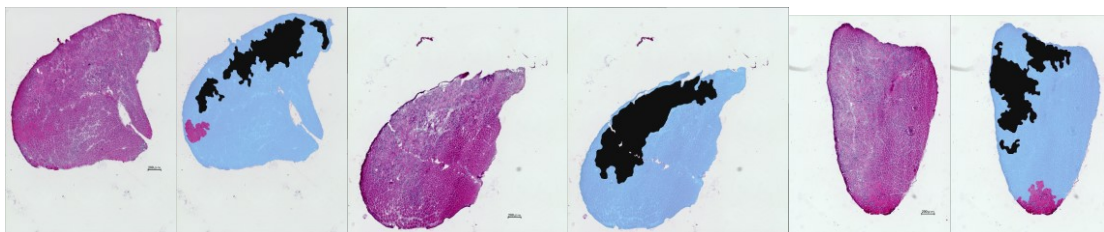
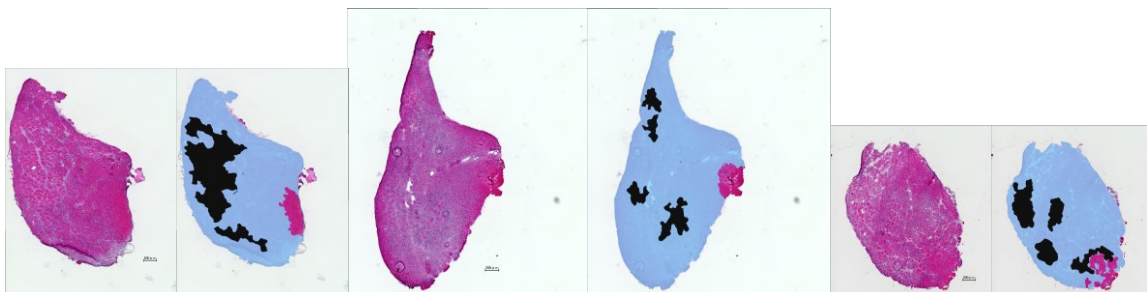


# C) APN KO AII (+)

$\beta$ -gal

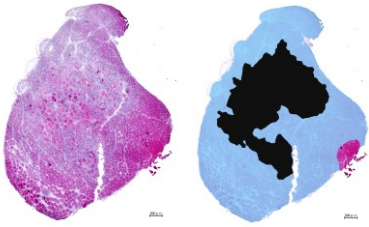
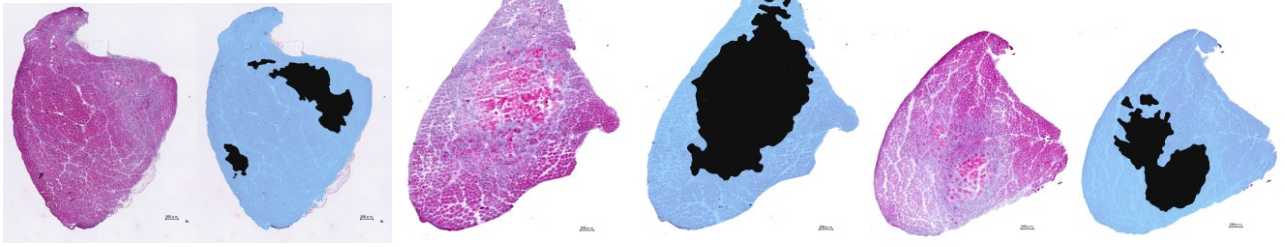


APN

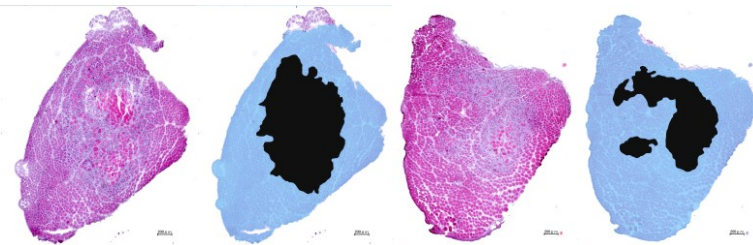
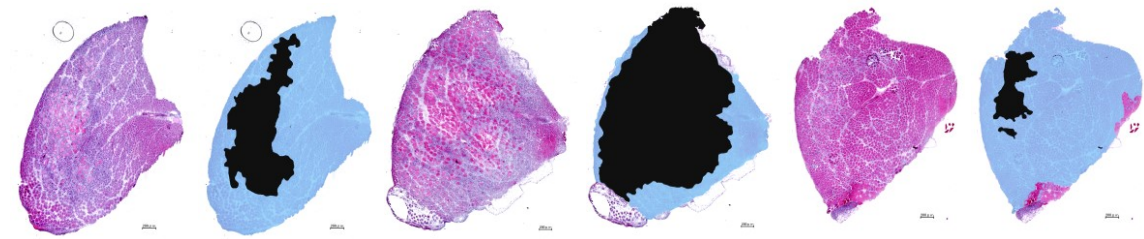


# D) T-cad KO All (+)

$\beta$ -gal



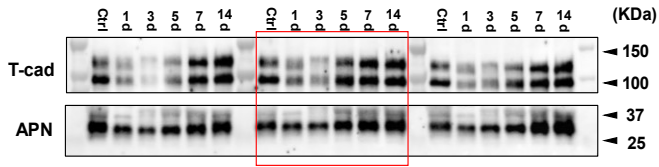
APN



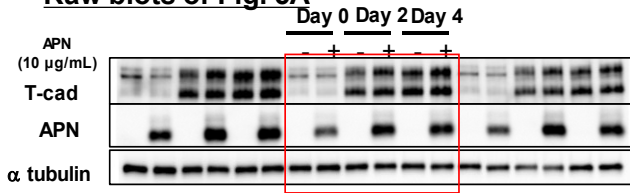


# Tanaka et al. Fig. S4

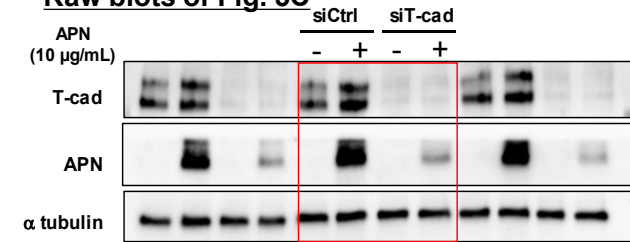
## Raw blots of Fig. 2A



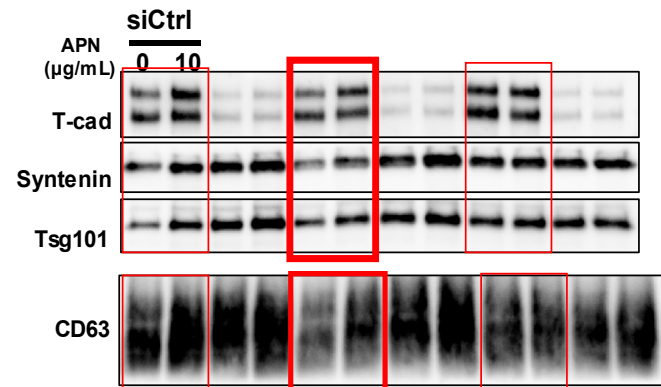
## Raw blots of Fig. 5A



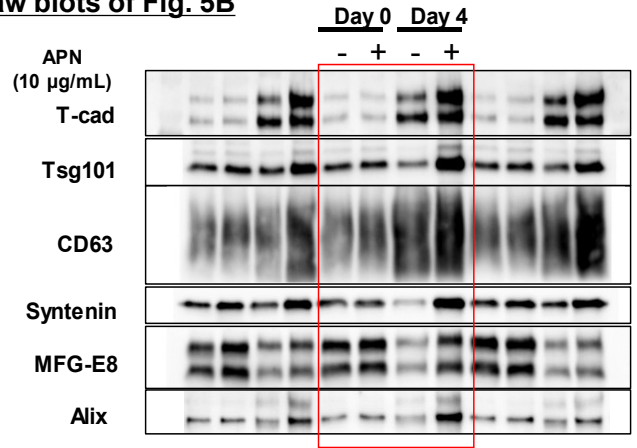
## Raw blots of Fig. 5C



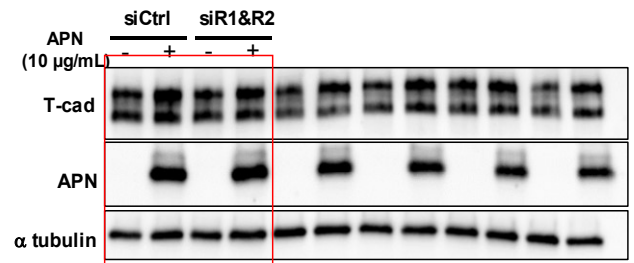
## Raw blots of Fig. 5E



## Raw blots of Fig. 5B



## Raw blots of Fig. 5D



## Raw blots of Fig. 5D

