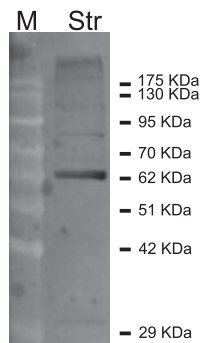
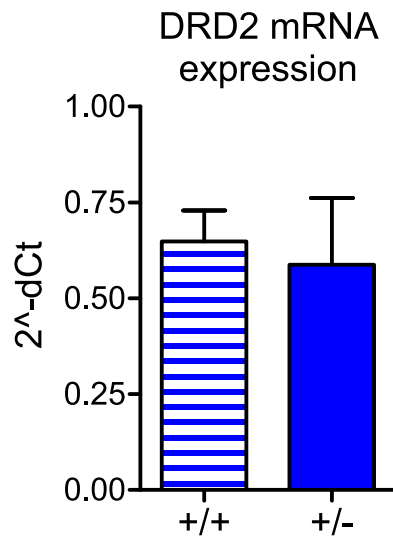


## Expanded View Figures



**Figure EV1. Representative DRD2 immunoblotting of striatal tissue.** Pattern of DRD2 immunolabeling in the striatum of adult wild-type *Tor1a<sup>+/+</sup>* mice. 30  $\mu$ g of striatal (Str) lysate was loaded. DRD2 antibody recognized a prominent band at  $\sim$  63 kDa.



**Figure EV2. Similar DRD2 mRNA expression in *Tor1a<sup>+/+</sup>* and *Tor1a<sup>+/-</sup>* striatum.** DRD2 mRNA expression is unaltered in the striatum of *Tor1a<sup>+/-</sup>* mice ( $N = 3$ ) with respect to wild-types ( $N = 3$ ), as determined by qRT-PCR (Mann-Whitney test  $P > 0.05$ ). Data are represented as mean  $\pm$  SEM.