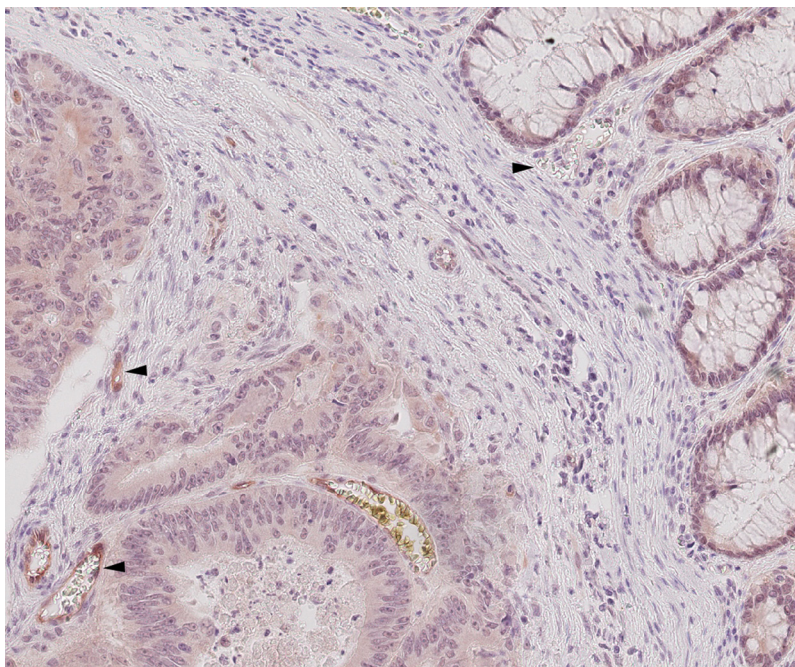


## Epithelial insulin receptor expression–prognostic relevance in colorectal cancer

### SUPPLEMENTARY MATERIALS



Supplementary Figure 1: Example of vascular insulin receptor expression within the tumor site (arrow heads, lower left corner) and adjacent normal mucosa without vascular insulin receptor expression (arrow head, upper right corner) in a CRC whole tissue-slide.

Supplementary Table 1: Vascular insulin receptor expression as assessed by immunohistochemistry versus *in situ* hybridization

VIR score vascular insulin receptor expression (immunohistochemistry)	Vascular insulin receptor isoform A expression ( <i>in situ</i> hybridization)	
	negative	positive
	<i>n</i> (%)	<i>n</i> (%)
0	2 (28.6)	5 (71.4)
1	1 (7.7)	12 (92.3)
2	2 (2.7)	73 (97.3)
3	2 (1.8)	108 (98.2)

$P = 0.032$  (Kendall's tau-b)