

Supplementary Materials

Contents:

- Figure S1.** ^1H NMR (400 MHz, CD_3OD) spectrum of sarcophelegan A (**1**).
- Figure S2.** ^{13}C NMR (100 MHz, CD_3OD) spectrum of sarcophelegan A (**1**).
- Figure S3.** ^1H - ^1H COSY spectrum of sarcophelegan A (**1**) in CD_3OD .
- Figure S4.** HSQC spectrum of sarcophelegan A (**1**) in CD_3OD .
- Figure S5.** HMBC spectrum of sarcophelegan A (**1**) in CD_3OD .
- Figure S6.** NOESY spectrum of sarcophelegan A (**1**) in CD_3OD .
- Figure S7.** ^1H NMR (400 MHz, CD_3OD) spectrum of sarcophelegan B (**2**).
- Figure S8.** ^{13}C NMR (100 MHz, CD_3OD) spectrum of sarcophelegan B (**2**).
- Figure S9.** ^1H - ^1H COSY spectrum of sarcophelegan B (**2**) in CD_3OD .
- Figure S10.** HSQC spectrum of sarcophelegan B (**2**) in CD_3OD .
- Figure S11.** HMBC spectrum of sarcophelegan B (**2**) in CD_3OD .
- Figure S12.** NOESY spectrum of sarcophelegan B (**2**) in CD_3OD .
- Figure S13.** ^1H NMR (400 MHz, CD_3OD) spectrum of sarcophelegan C (**3**).
- Figure S14.** ^{13}C NMR (100 MHz, CD_3OD) spectrum of sarcophelegan C (**3**).
- Figure S15.** ^1H - ^1H COSY spectrum of sarcophelegan C (**3**) in CD_3OD .
- Figure S16.** HSQC spectrum of sarcophelegan C (**3**) in CD_3OD .
- Figure S17.** HMBC spectrum of sarcophelegan C (**3**) in CD_3OD .
- Figure S18.** NOESY spectrum of sarcophelegan C (**3**) in CD_3OD .
- Figure S19.** ^1H NMR (400 MHz, CDCl_3) spectrum of sarcophelegan D (**4**).
- Figure S20.** ^{13}C NMR (100 MHz, CDCl_3) spectrum of sarcophelegan D (**4**).
- Figure S21.** ^1H - ^1H COSY spectrum of sarcophelegan D (**4**) in CDCl_3 .
- Figure S22.** HSQC spectrum of sarcophelegan D (**4**) in CDCl_3 .
- Figure S23.** HMBC spectrum of sarcophelegan D (**4**) in CDCl_3 .
- Figure S24.** NOESY spectrum of sarcophelegan D (**4**) in CDCl_3 .
- Figure S25.** The Chem3D molecular modeling study of **3**.

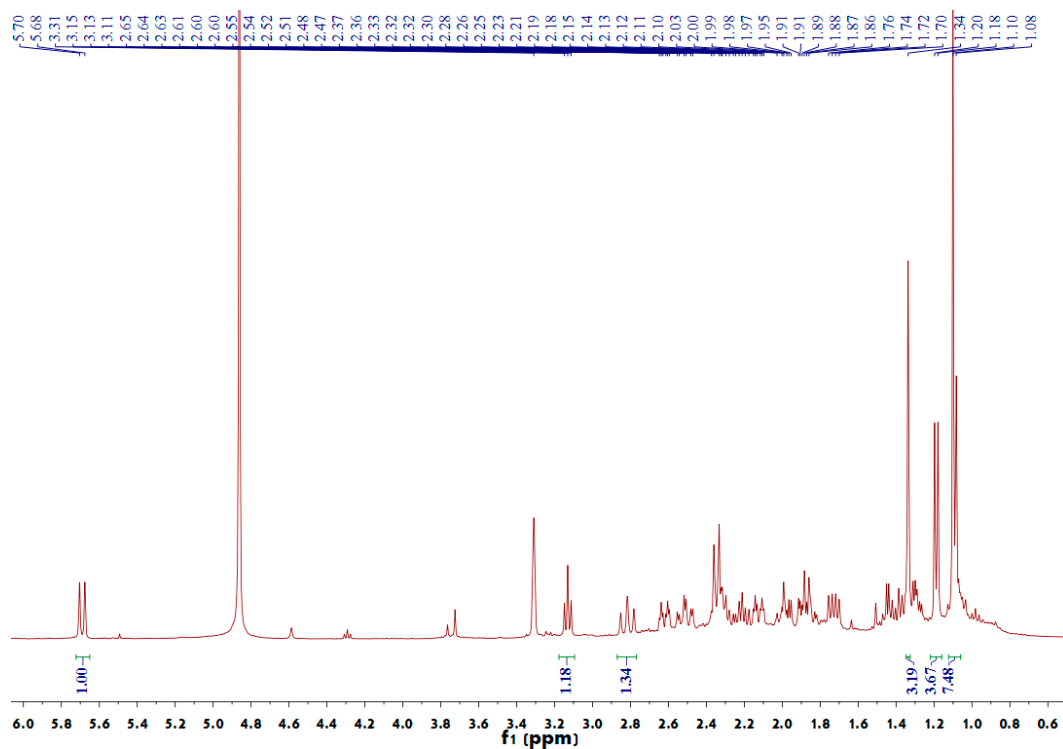


Figure S1. ^1H NMR (400 MHz, CD_3OD) spectrum of sarcophelegan A (1).

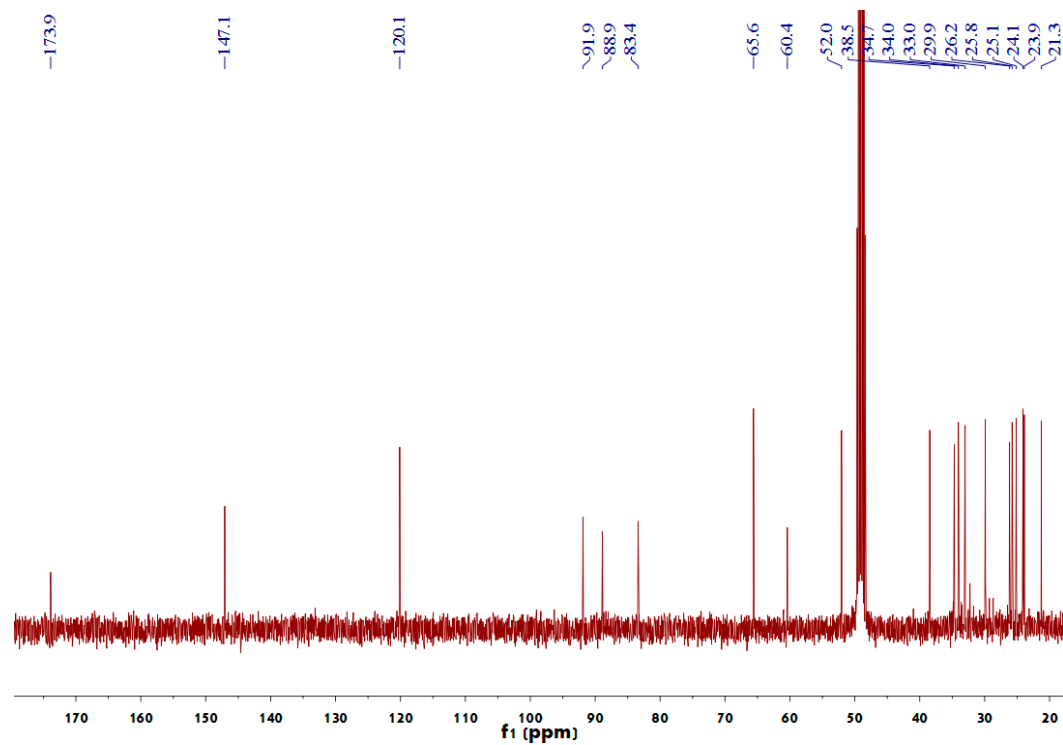


Figure S2. ^{13}C NMR (100 MHz, MeOD) spectrum of sarcophelegan A (1).

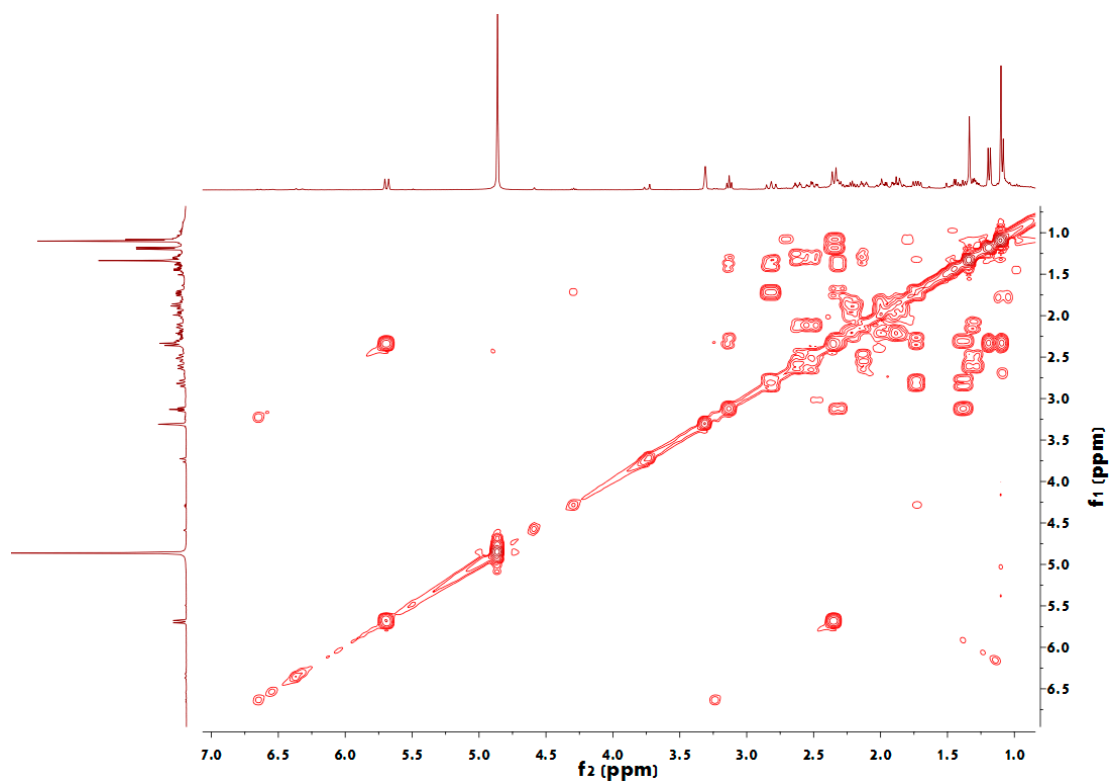


Figure S3. ^1H - ^1H COSY spectrum of sarcophelegan A (**1**) in CD_3OD .

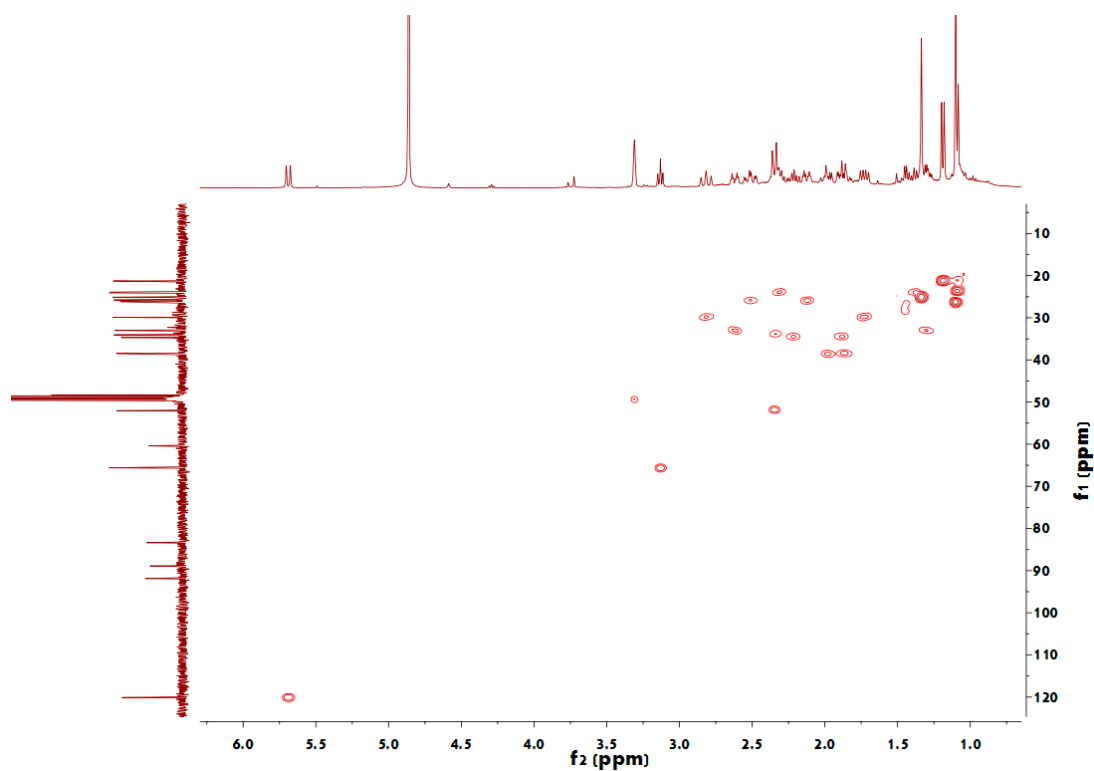


Figure S4. HSQC spectrum of sarcophelegan A (**1**) in CD_3OD .

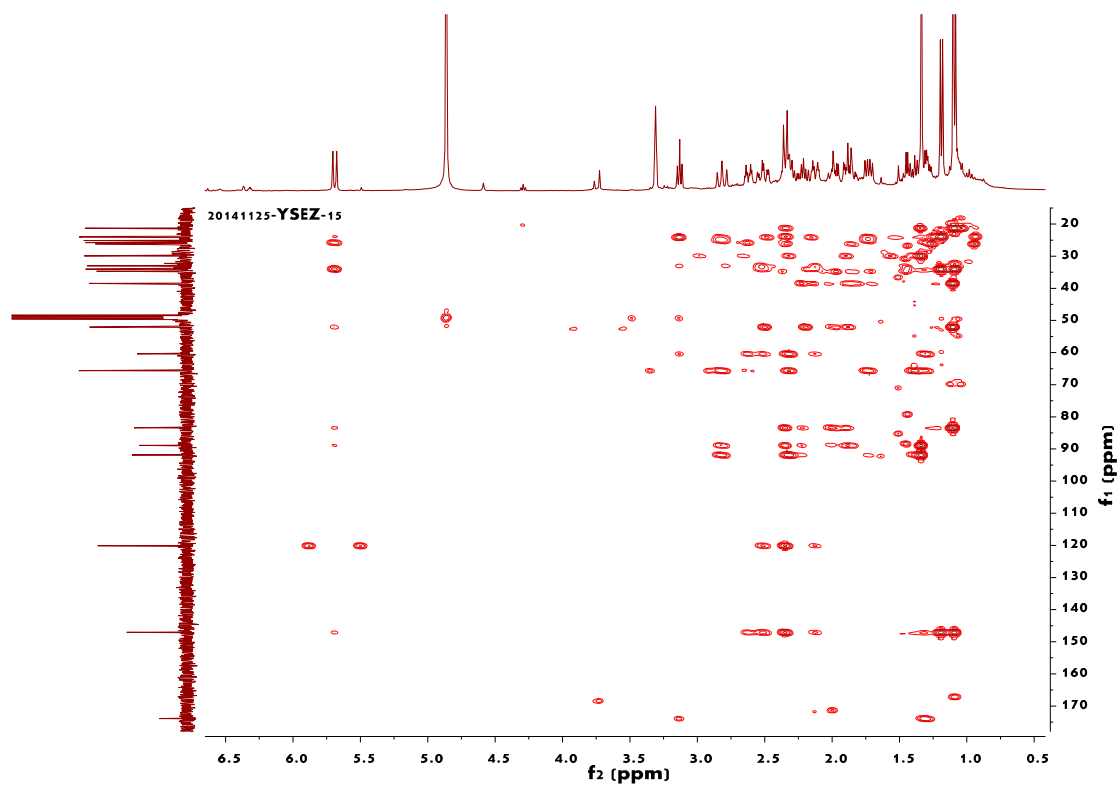


Figure S5. HMBC spectrum of sarcophelegan A (1) in CD_3OD .

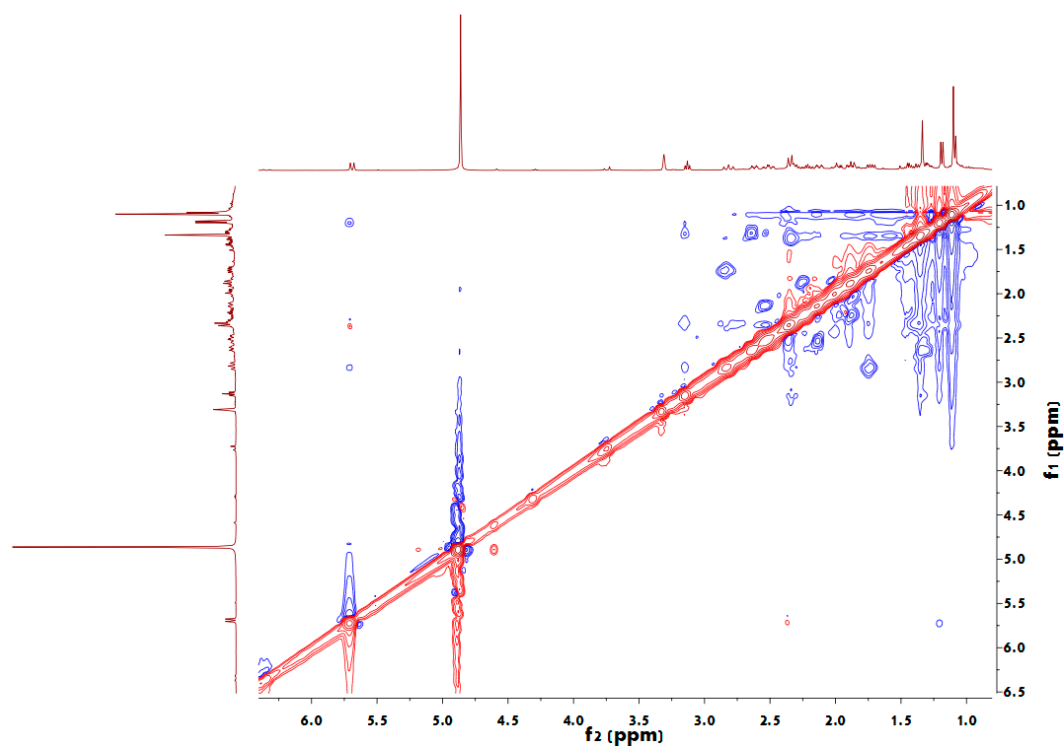


Figure S6. NOESY spectrum of sarcophelegan A (1) in CD_3OD .

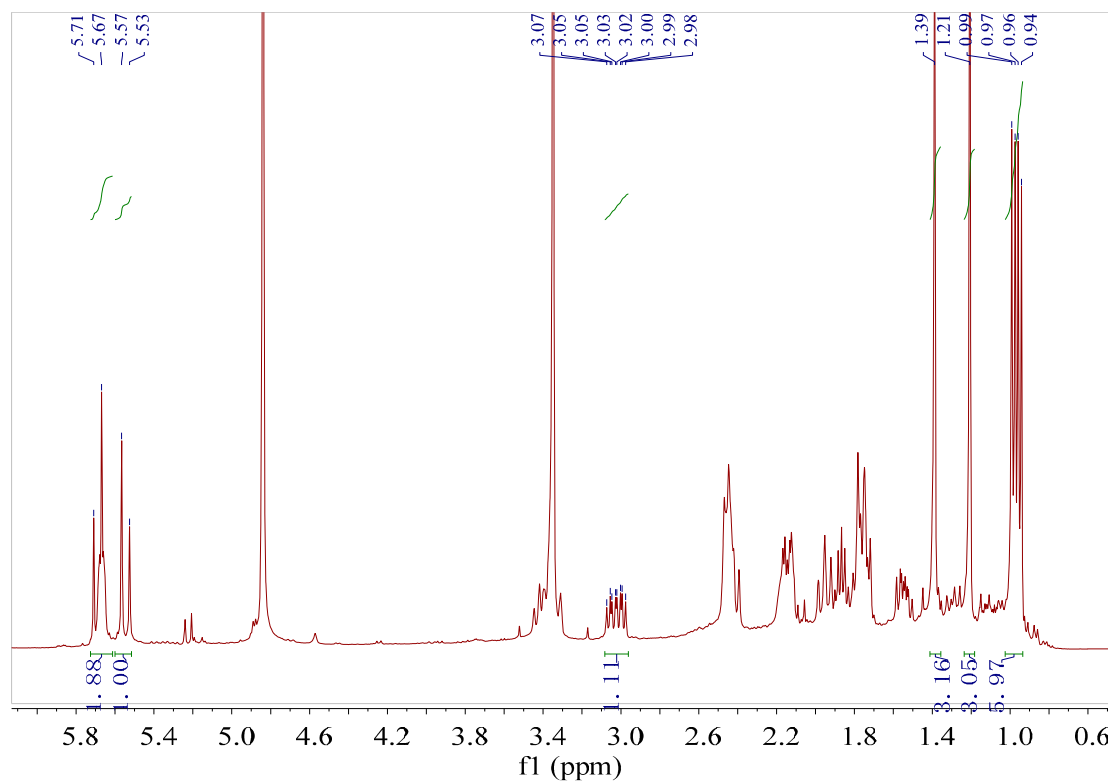


Figure S7. ^1H NMR (400 MHz, CD_3OD) spectrum of sarcophelegan B (**2**).

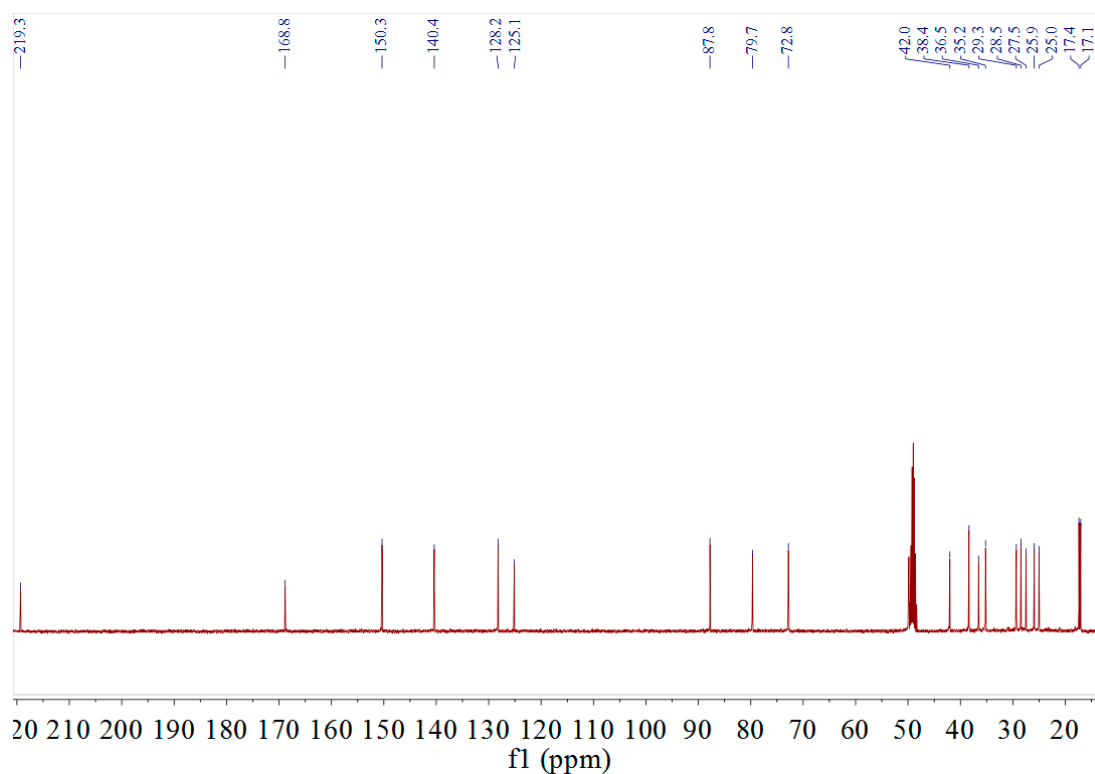


Figure S8. ^{13}C NMR (100 MHz, CD_3OD) spectrum of sarcophelegan B (**2**).

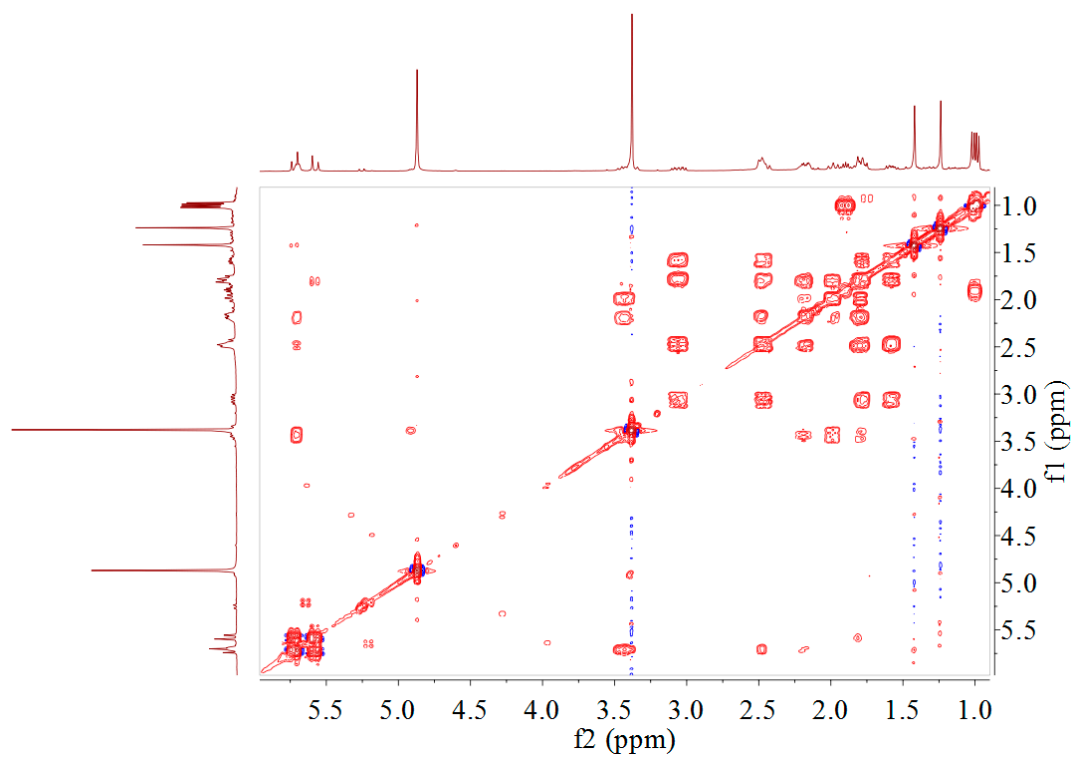


Figure S9. ^1H - ^1H COSY spectrum of sarcophelegan B (**2**) in CD_3OD .

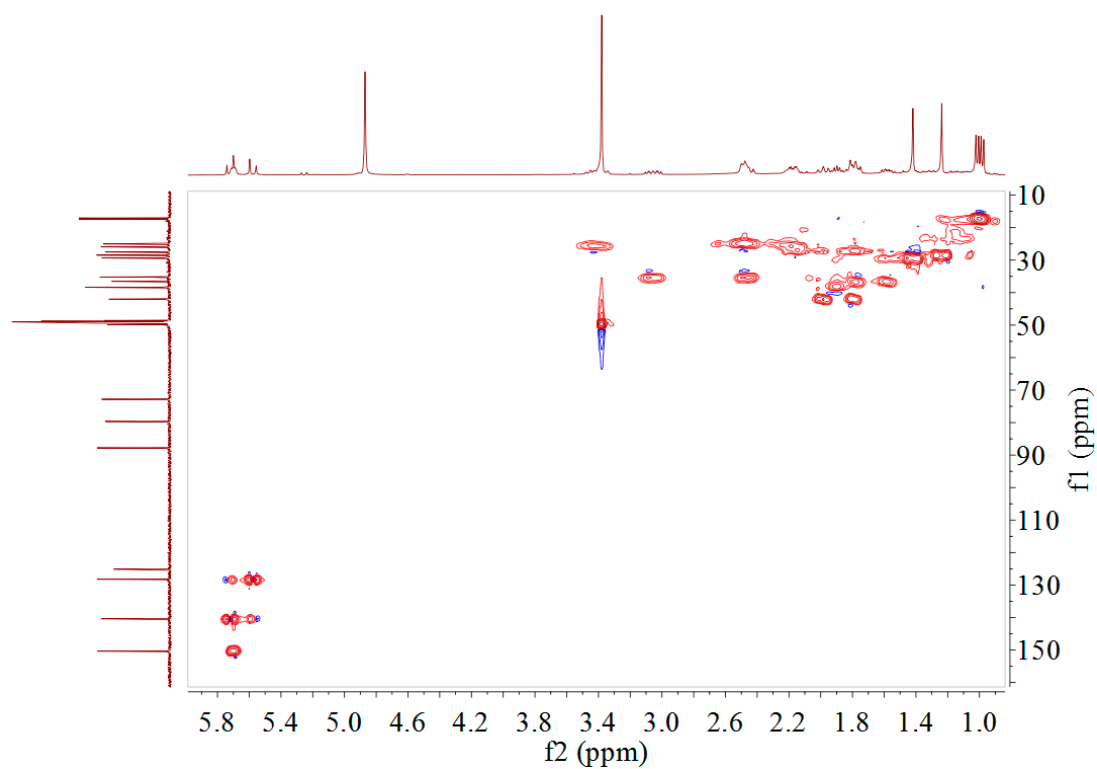


Figure S10. HSQC spectrum of sarcophelegan B (**2**) in CD_3OD .

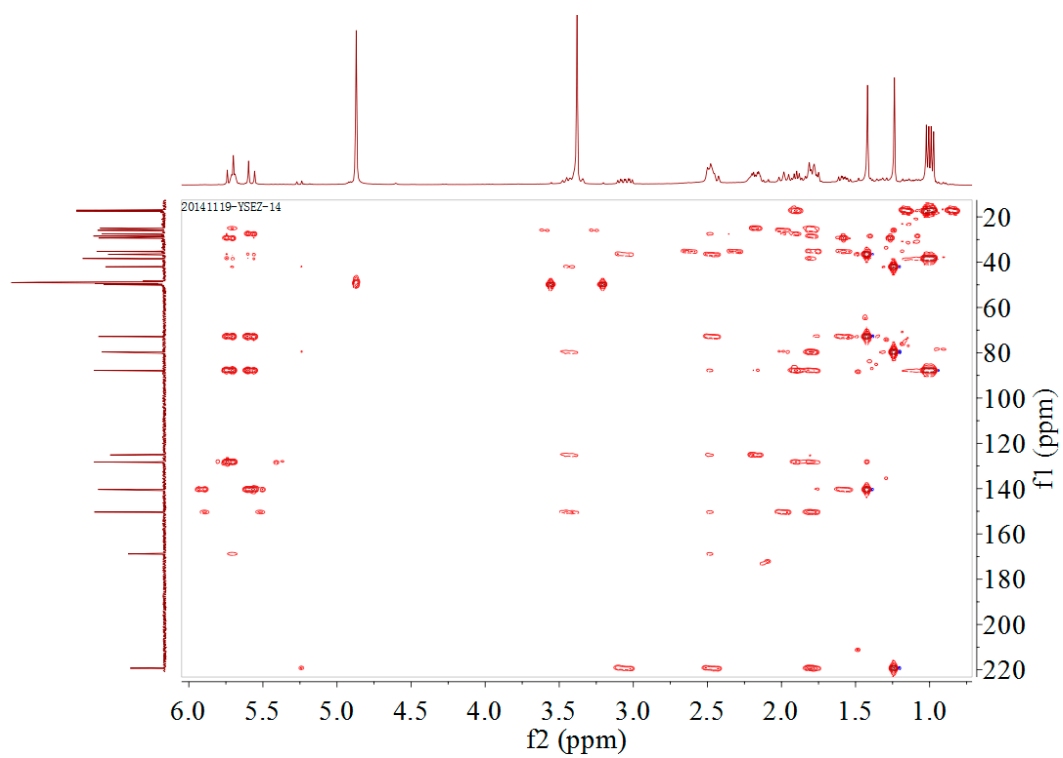


Figure S11. HMBC spectrum of sarcophelegan B (**2**) in CD₃OD.

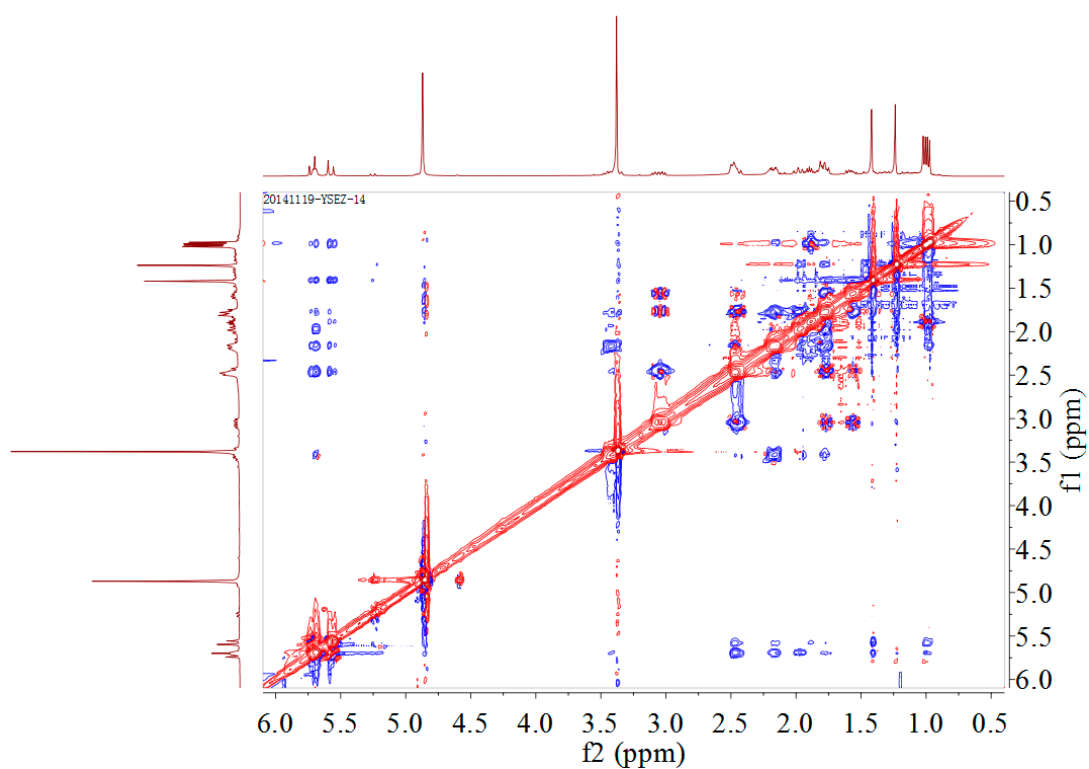


Figure S12. NOESY spectrum of sarcophelegan B (**2**) in CD₃OD.

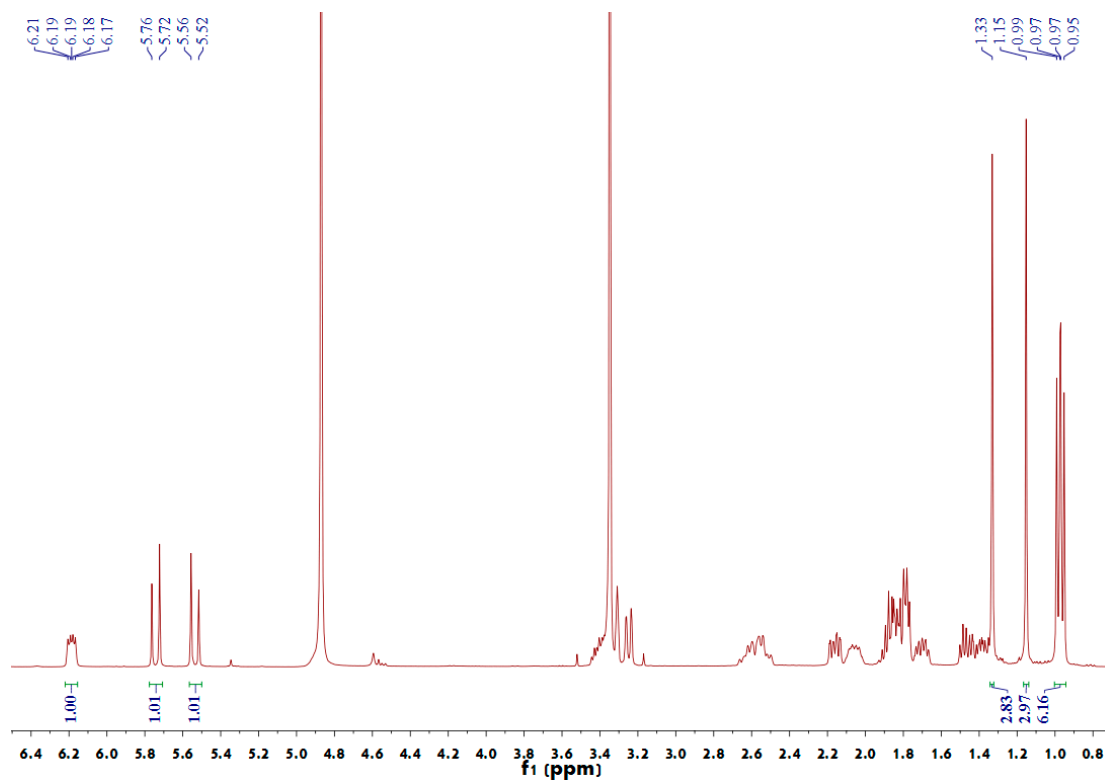


Figure S13. ¹H NMR (400 MHz, CD₃OD) spectrum of sarcophelegan C (3).

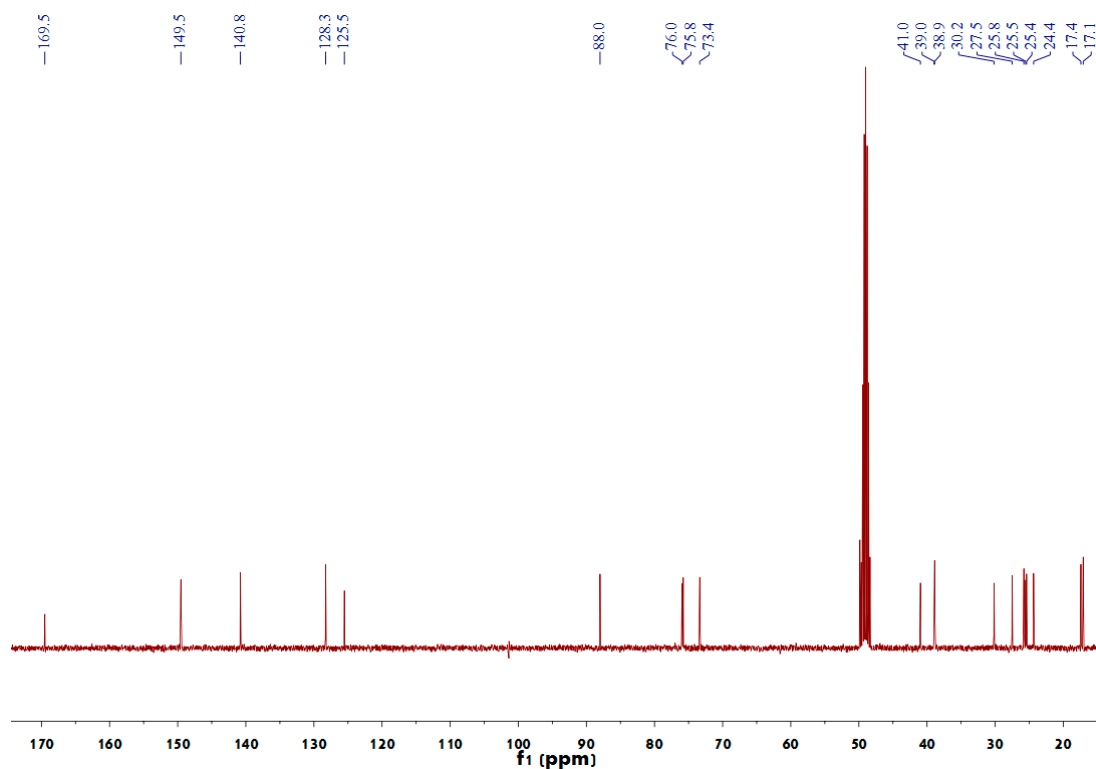


Figure S14. ¹³C NMR (100 MHz, CD₃OD) spectrum of sarcophelegan C (3).

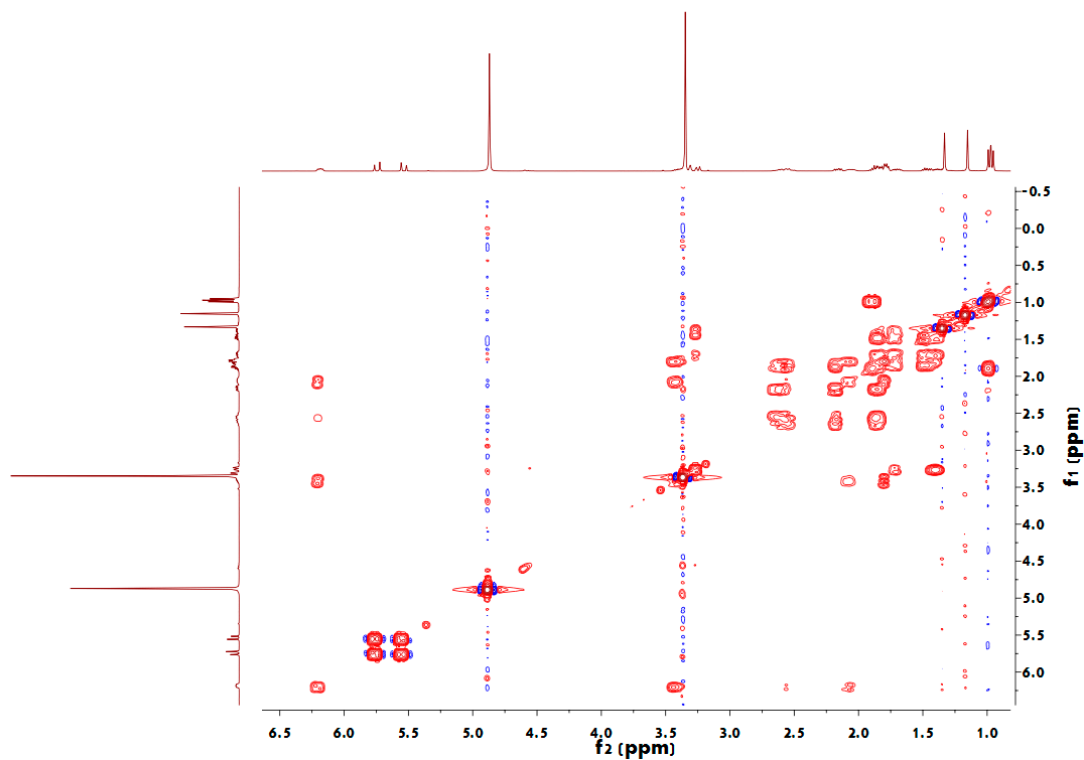


Figure S15. ^1H - ^1H COSY spectrum of sarcophelegan C (**3**) in CD_3OD .

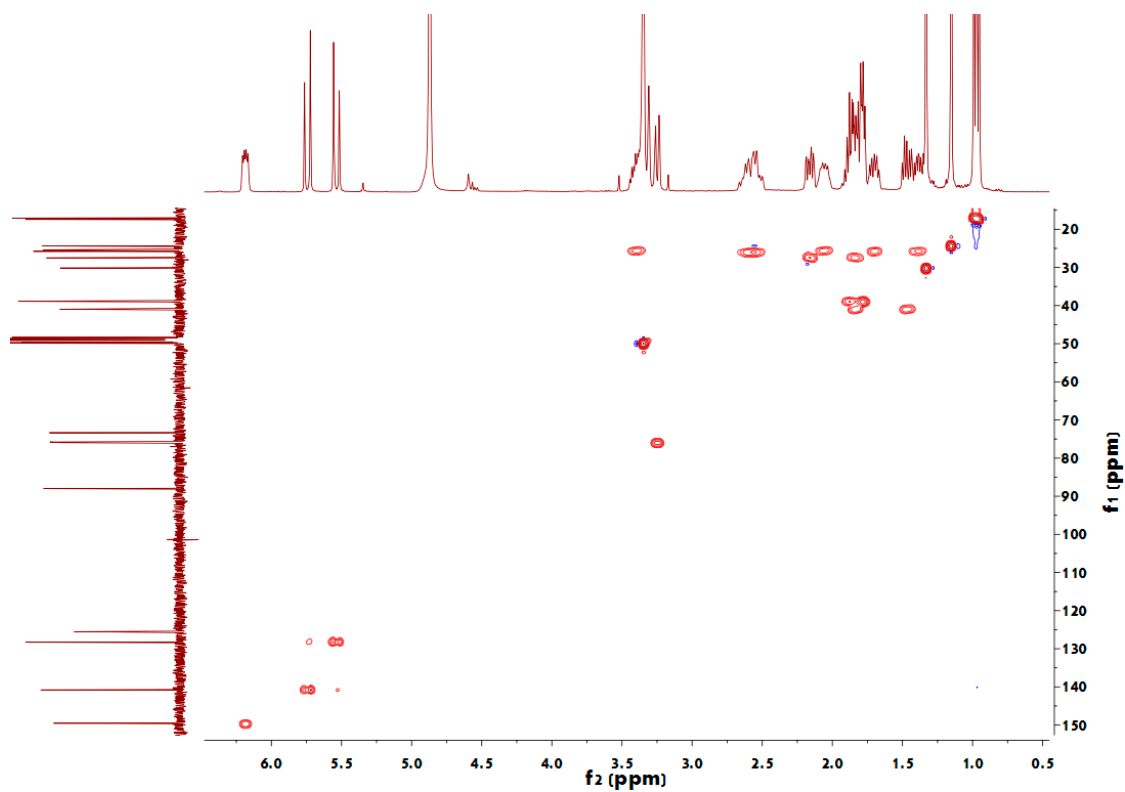


Figure S16. HSQC spectrum of sarcophelegan C (**3**) in CD_3OD .

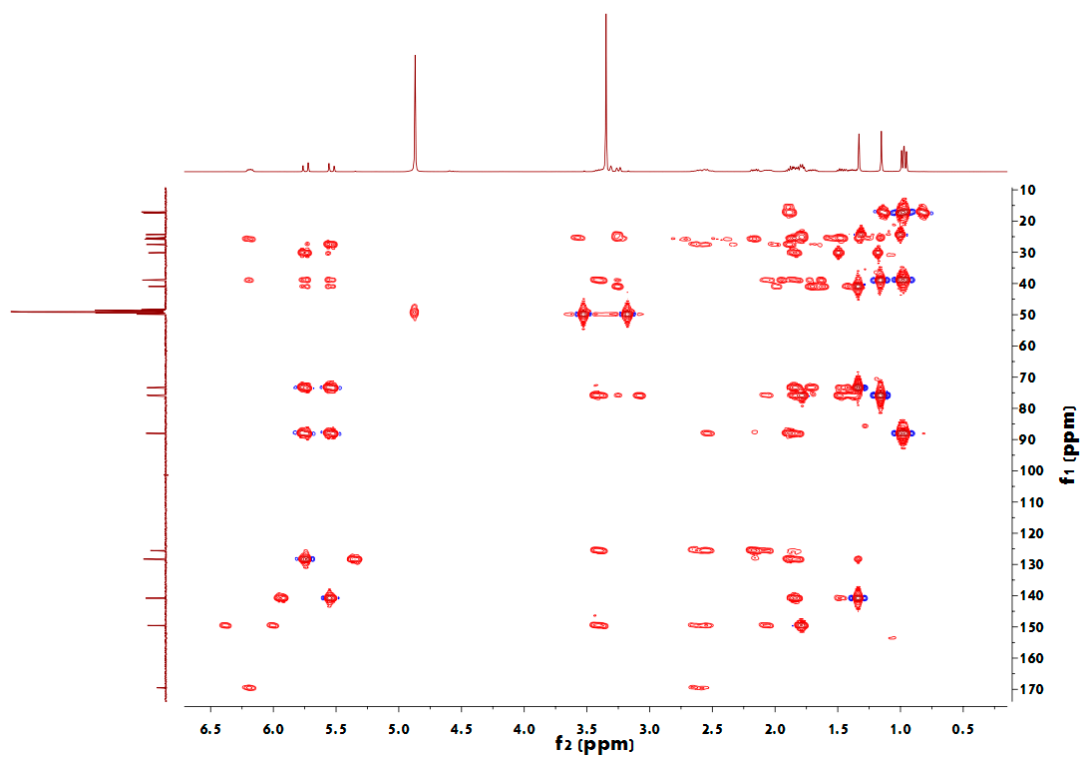


Figure S17. HMBC spectrum of sarcophelegan C (**3**) in CD_3OD .

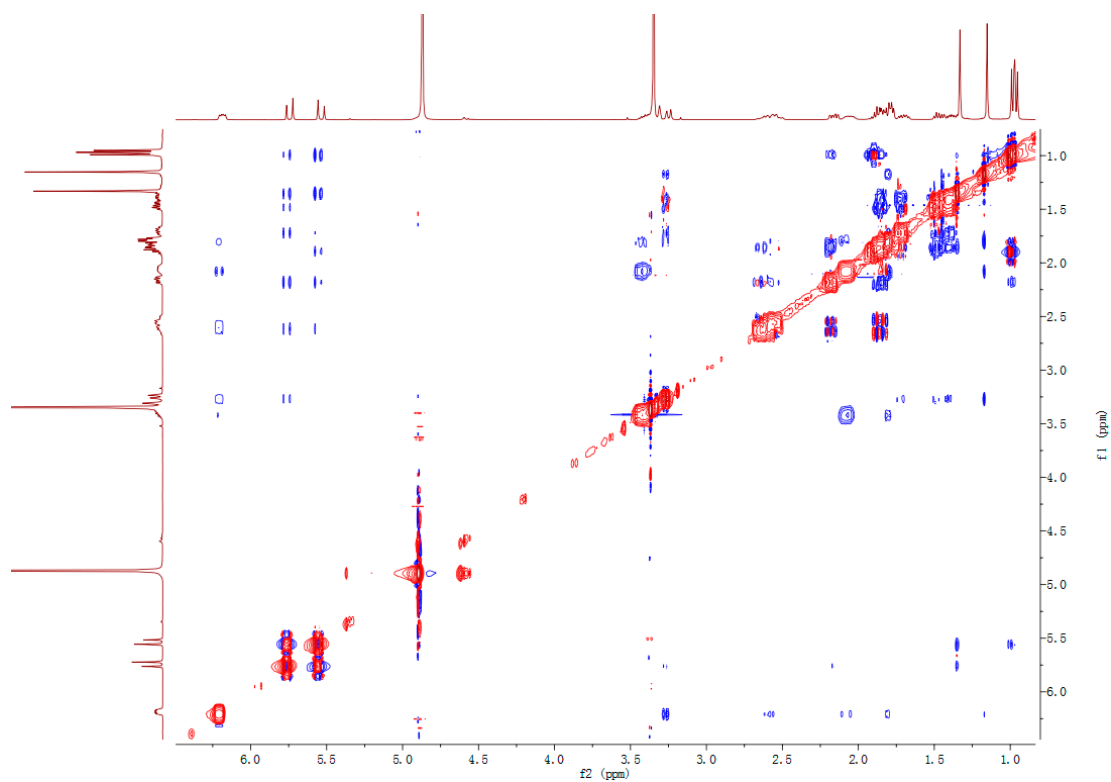


Figure S18. NOESY spectrum of sarcophelegan C (**3**) in CD_3OD .

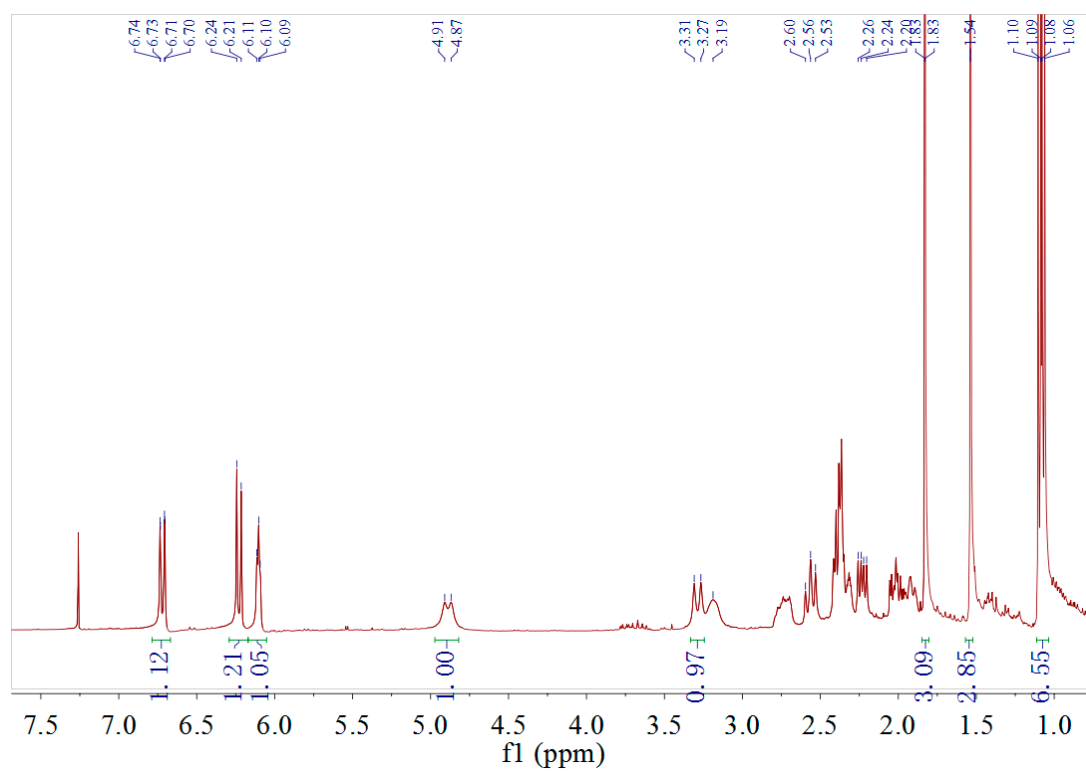


Figure S19. ¹H NMR (400 MHz, CDCl₃) spectrum of sarcophelegan D (4).

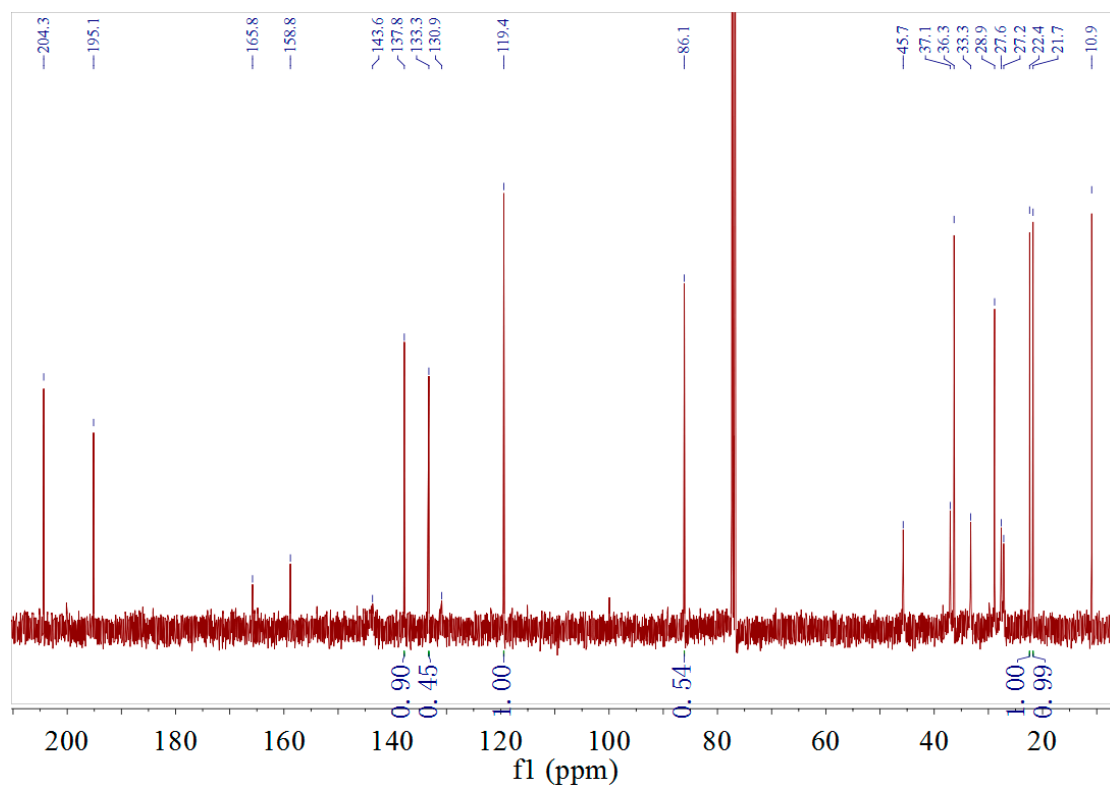


Figure S20. ¹³C NMR (100 MHz, CDCl₃) spectrum of sarcophelegan D (4).

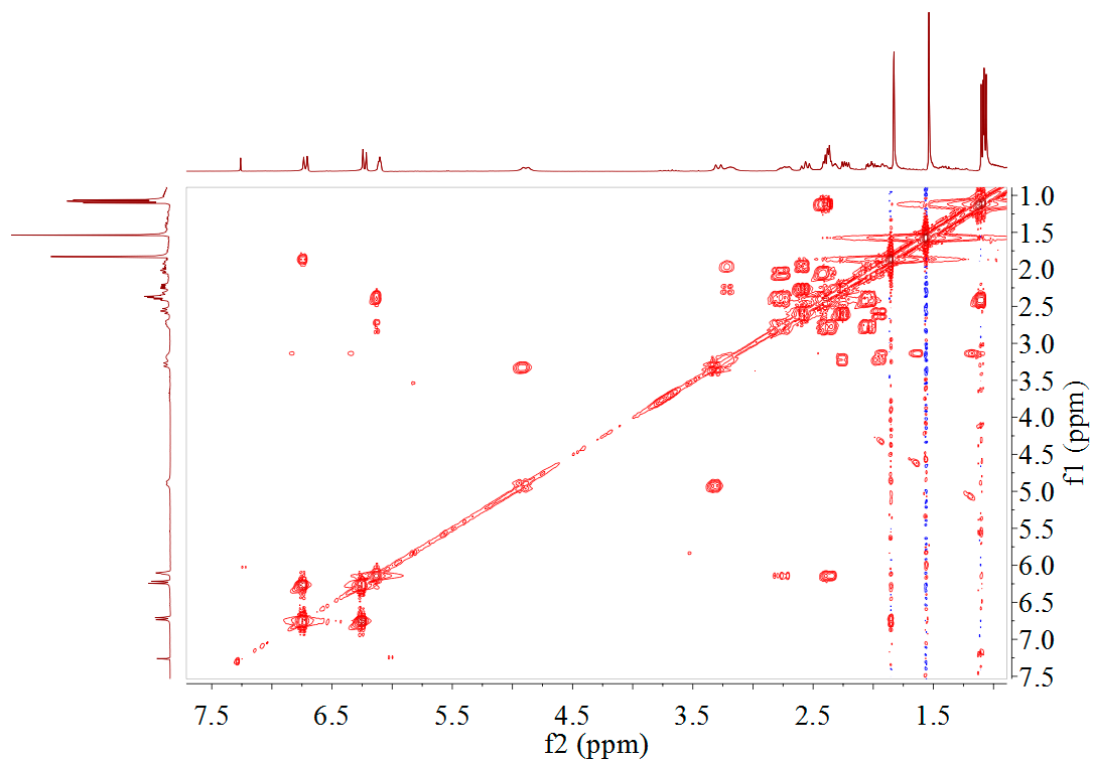


Figure S21. ^1H - ^1H COSY spectrum of sarcophelegan D (**4**) in CDCl_3 .

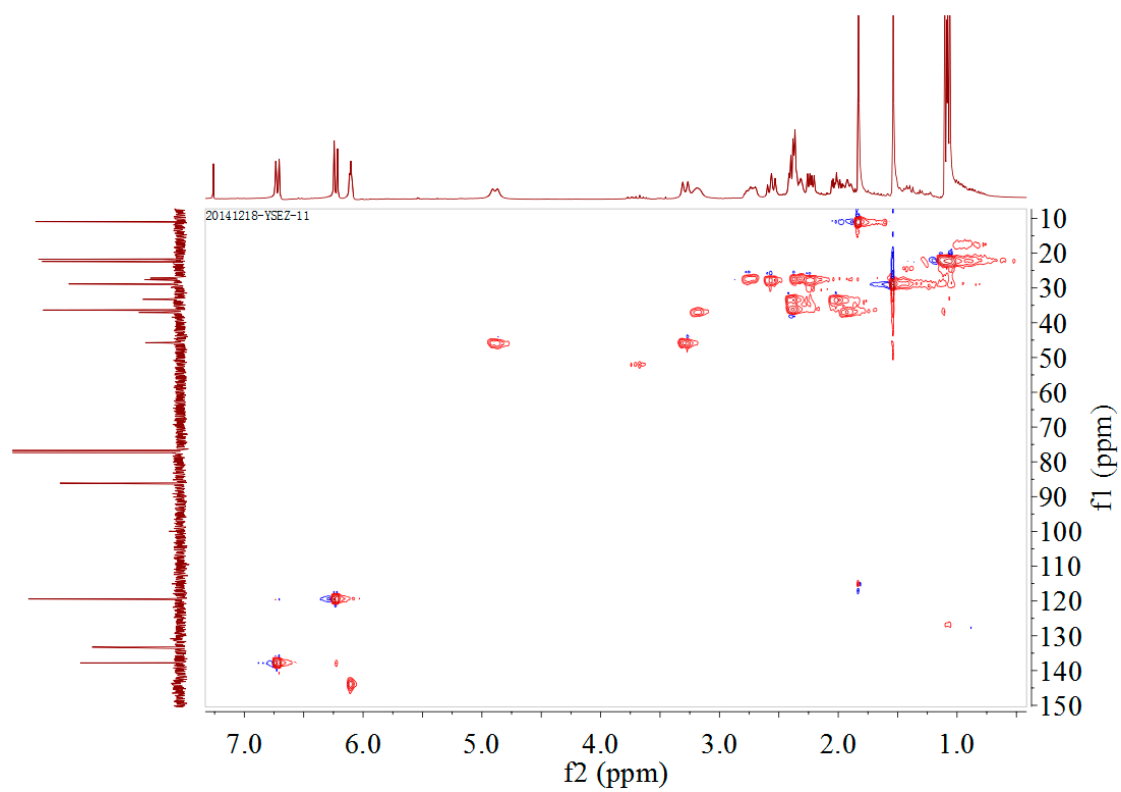


Figure S22. HSQC spectrum of sarcophelegan D (**4**) in CDCl_3 .

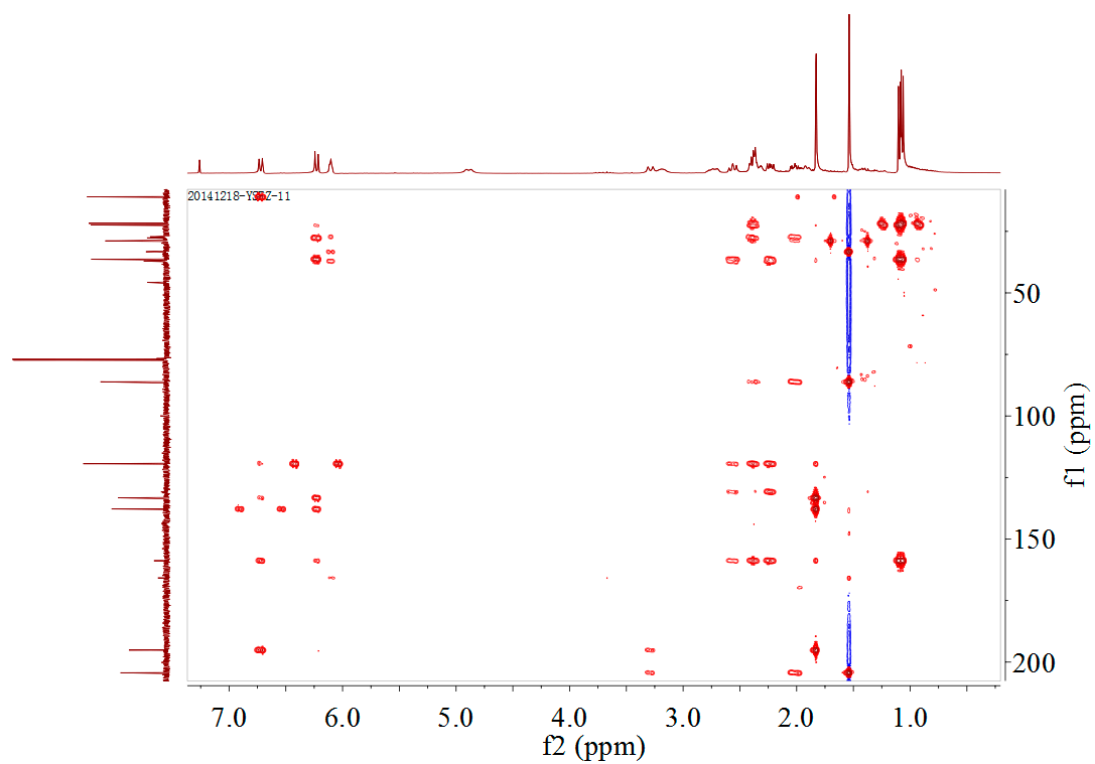


Figure S23. HMBC spectrum of sarcophelegan D (**4**) in CDCl₃.

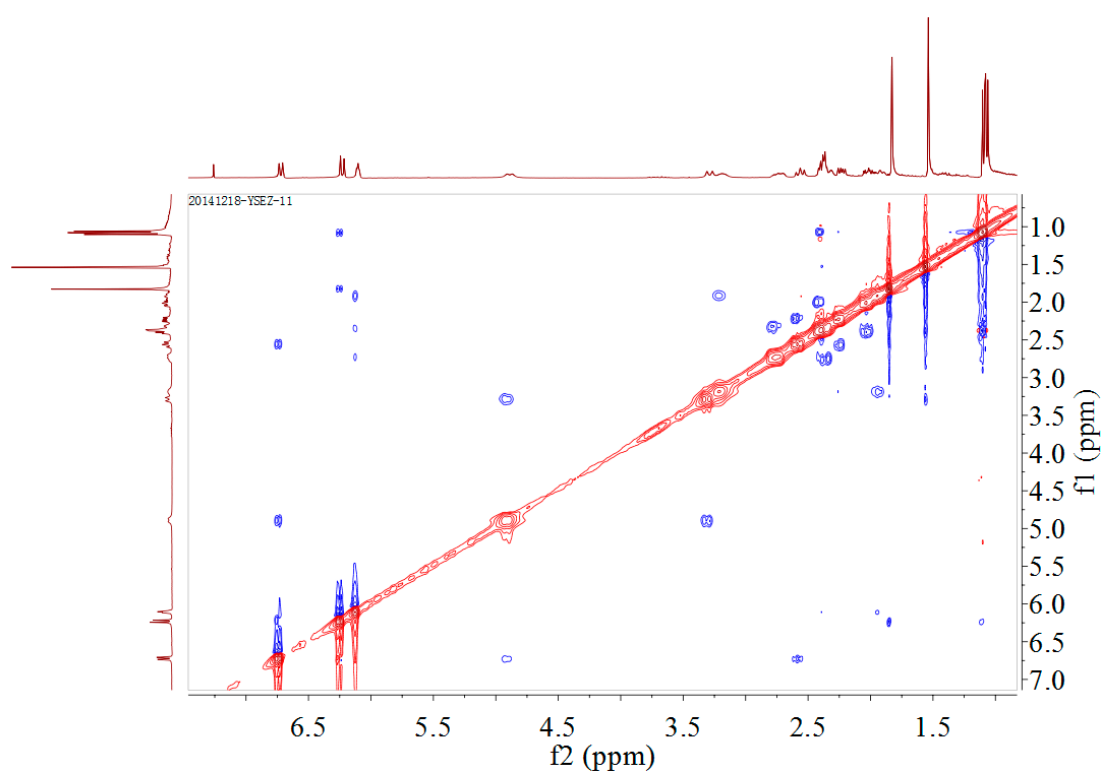


Figure S24. NOESY spectrum of sarcophelegan D (**4**) in CDCl₃.

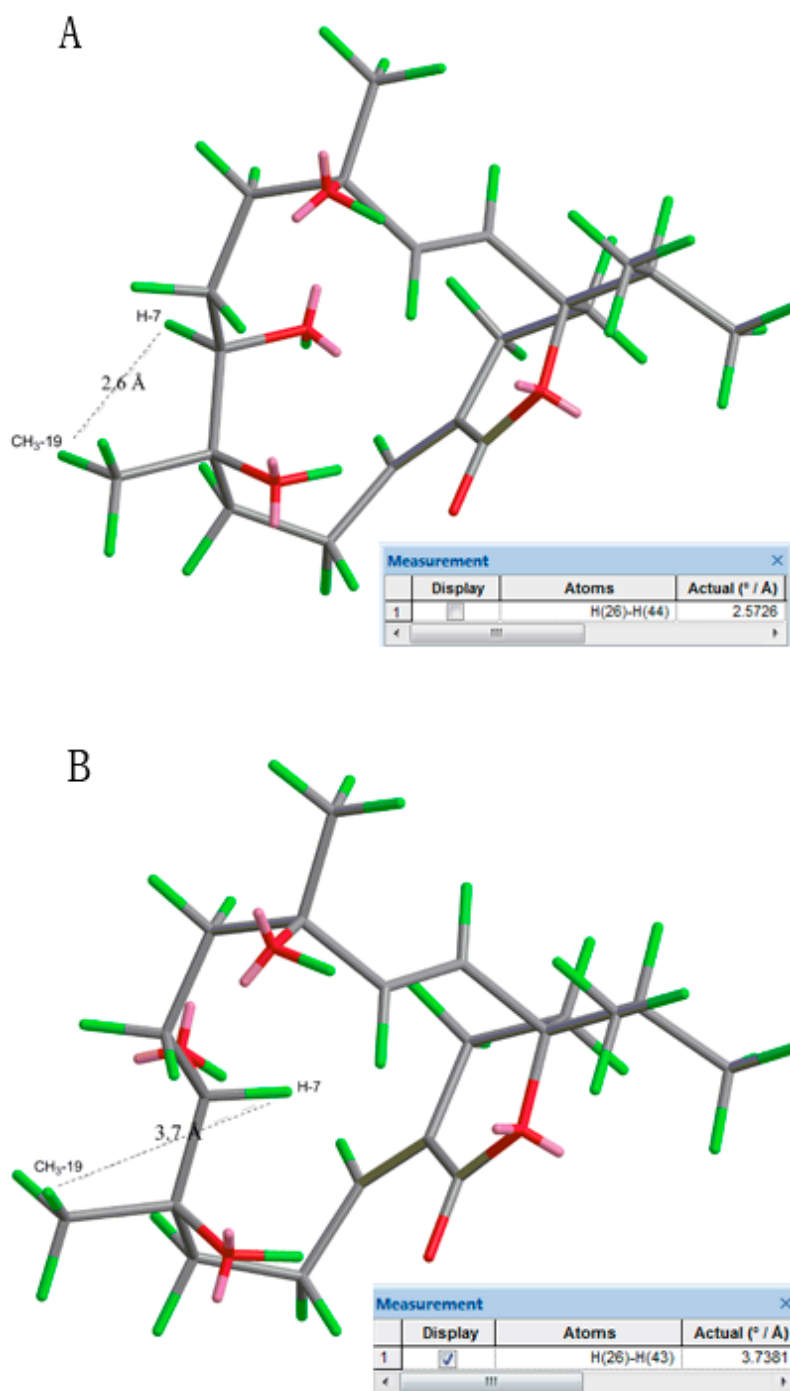


Figure S25. The Chem3D molecular modeling study of **3**. (A) represents the distance between H-7 and CH₃-19 of 7 β -OH isomer; (B) represents the distance between H-7 and CH₃-19 of 7 α -OH isomer.