

Supplementary Materials: Synthesis and Biological Evaluation of Curcumin Derivatives with Water-Soluble Groups as Potential Antitumor Agents: An *in Vitro* Investigation Using Tumor Cell Lines

Luyang Ding, Shuli Ma, Hongxiang Lou, Longru Sun and Mei Ji

1. Cell Apoptosis Effects of Compounds 8 and 9 on HeLa or 12 on MCF-7

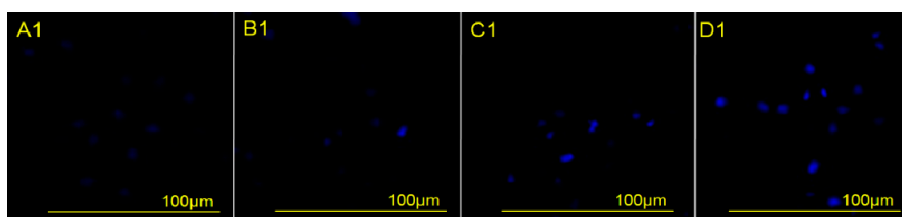


Figure S1. Effects of compound 8 on HeLa cell apoptosis was observed by DAPI staining under an inversion fluorescent microscope. HeLa cells were incubated with 0 μM (A1); 2.5 μM (B1); 5 μM (C1); or 10 μM (D1) of compound 8 for 48 h.

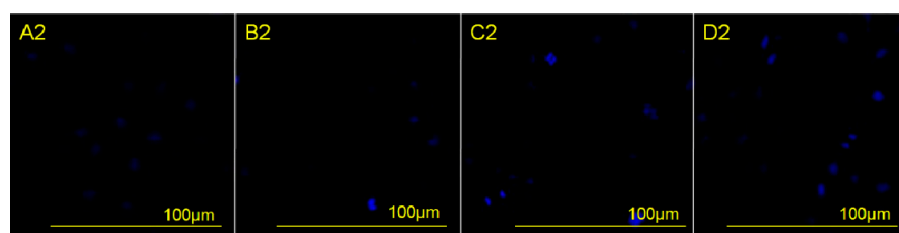


Figure S2. Effects of compound 9 on HeLa cell apoptosis was observed by DAPI staining under an inversion fluorescent microscope. HeLa cells were incubated with 0 μM (A2); 2.5 μM (B2); 5 μM (C2); or 10 μM (D2) of compound 9 for 48 h.

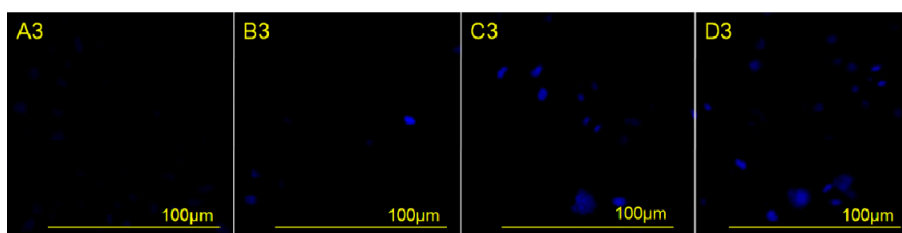
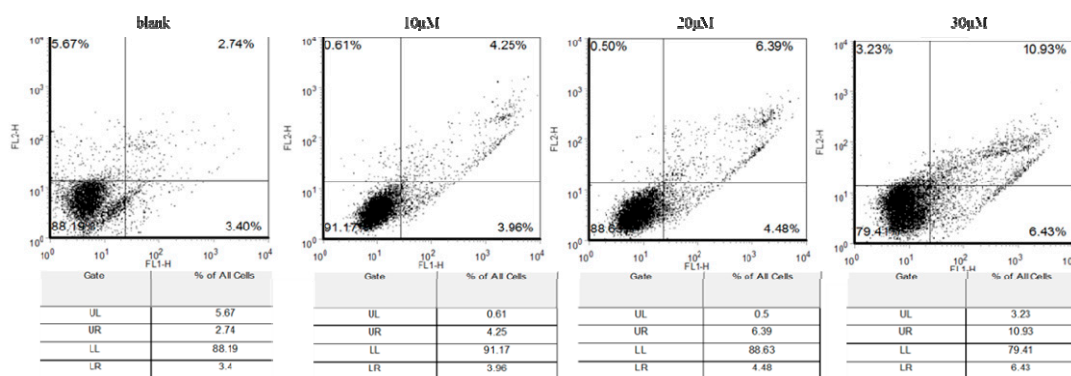
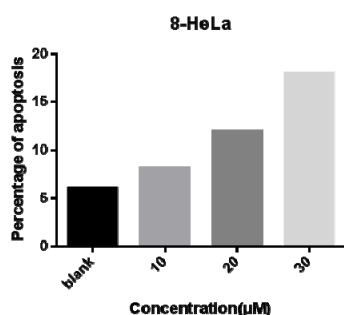


Figure S3. Effects of compound 12 on HeLa cell apoptosis was observed by DAPI staining under an inversion fluorescent microscope. HeLa cells were incubated with 0 μM (A3); 2.5 μM (B3); 5 μM (C3); or 10 μM (D3) of compound 12 for 48 h.

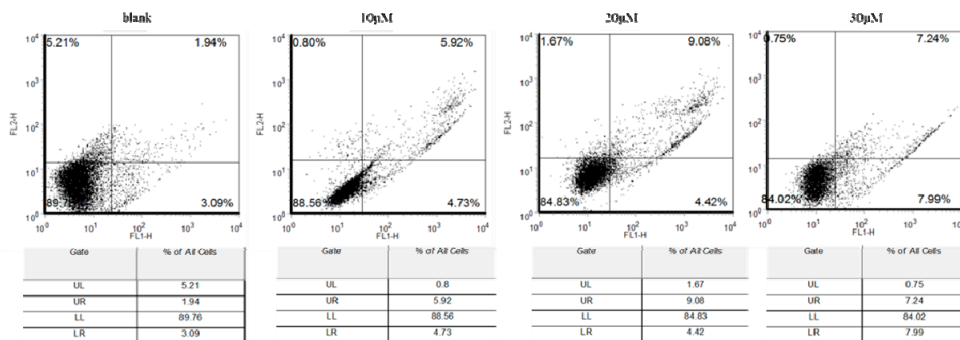


A

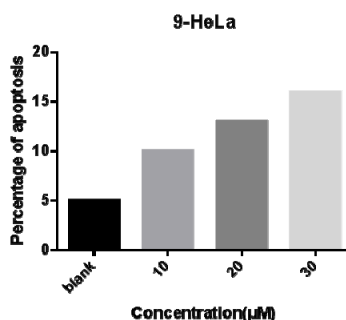


B

Figure S4. (A) HeLa cells were treated with compound 8 (0, 10, 20, or 30 μM) for 24 h and then analyzed by Annexin V-FITC/PI staining and flow cytometry. The apoptotic cell scatter plot is divided into four quadrants: upper left (UL), upper right (UR), lower left (LL), and lower right (LR) quadrants; (B) Apoptosis rate of HeLa cells treated with various concentrations of compound 8.

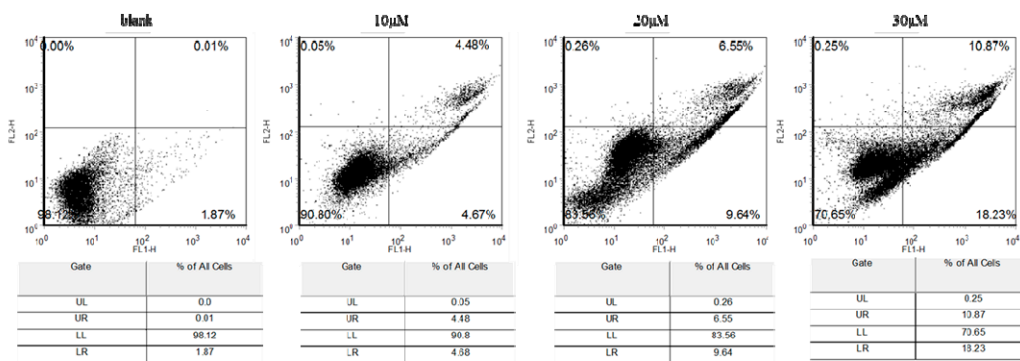


A



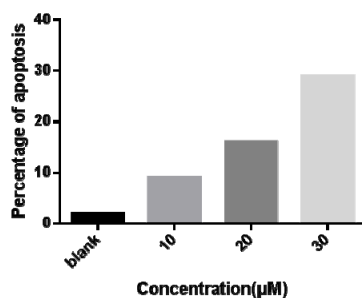
B

Figure S5. (A) HeLa cells were treated with compound 9 (0, 10, 20, or 30 μM) for 24 h and then analyzed by Annexin V-FITC/PI staining and flow cytometry. The apoptotic cell scatter plot is divided into four quadrants: upper left (UL), upper right (UR), lower left (LL), and lower right (LR) quadrants; (B) Apoptosis rate of HeLa cells treated with various concentrations of compound 9.



A

12-MCF-7



B

Figure S6. (A) MCF-7 cells were treated with compound **12** (0, 10, 20, or 30 μM) for 24 h and then analyzed by Annexin V-FITC/PI staining and flow cytometry. The apoptotic cell scatter plot is divided into four quadrants: upper left (UL), upper right (UR), lower left (LL), and lower right (LR) quadrants. (B) Apoptosis rate of MCF-7 cells treated with various concentrations of compound **12**.

2. $^1\text{H-NMR}$, $^{13}\text{C-NMR}$, $^{31}\text{P-NMR}$, MS-ESI, and HRMS-ESI of the Synthetic Compounds

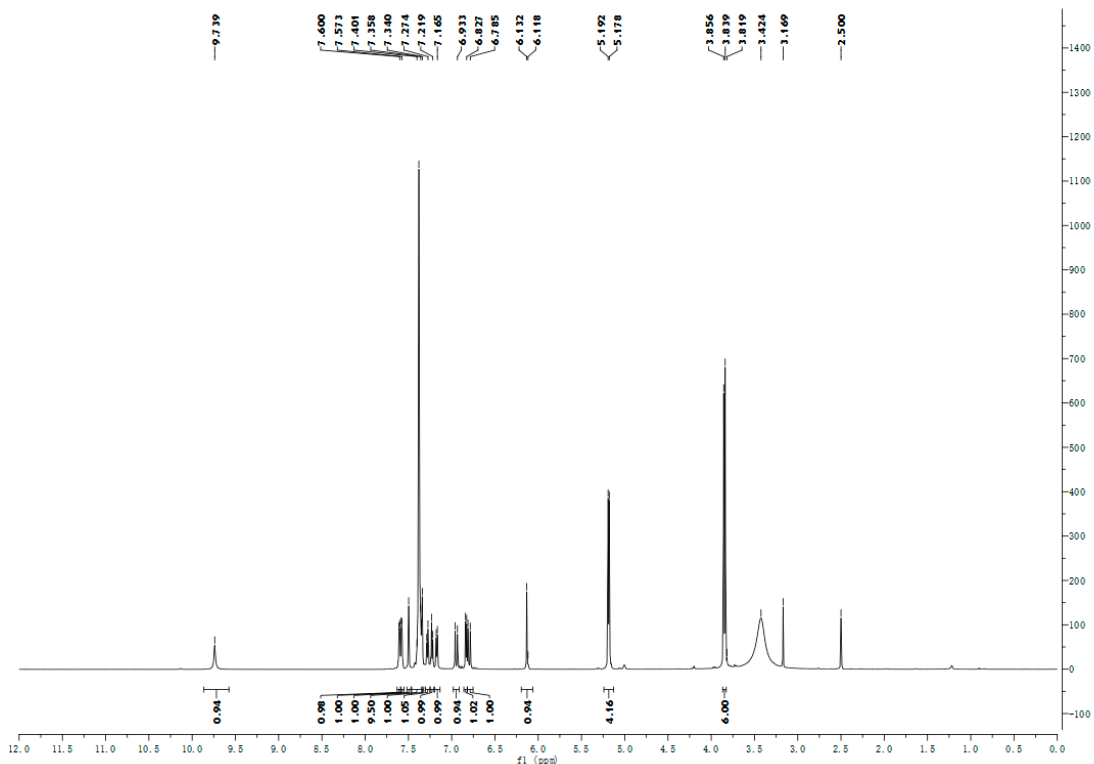


Figure S7. $^1\text{H-NMR}$ for compound **1**.

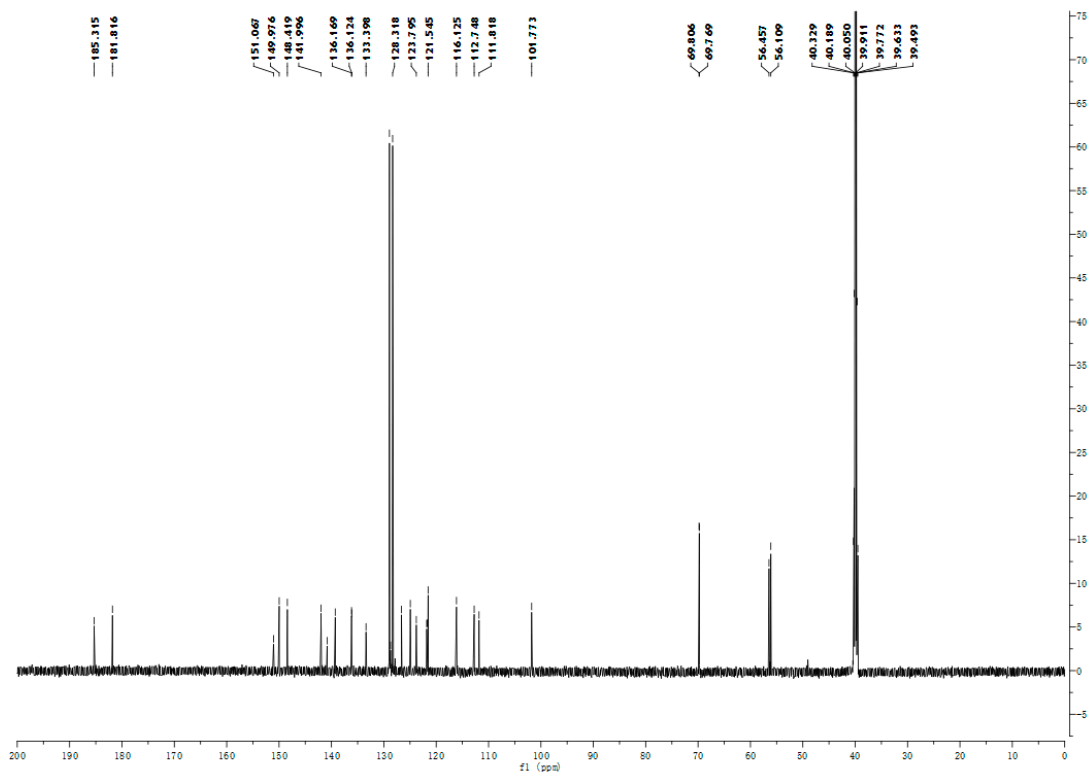


Figure S8. ¹³C-NMR for compound 1.

R.Time:0.983(Scan#:119)
 MassPeaks:700 BasePeak:627(50711)
 Spectrum Mode:Single 0.983(119)
 BG Mode:Averaged 0.033-0.692(5-84) Polarity:Negative Segment 1 - Event 1

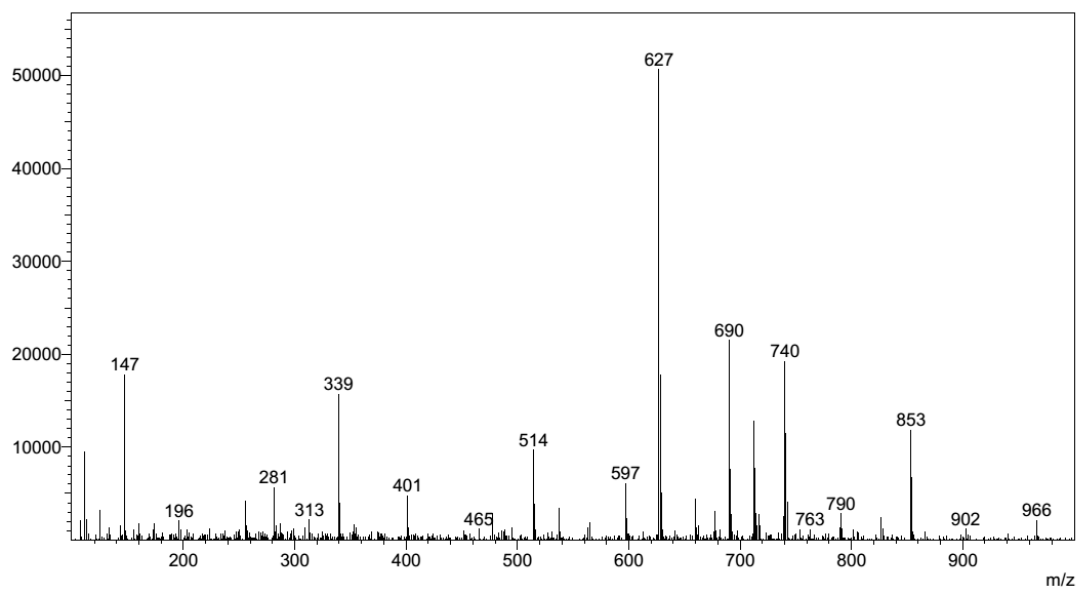


Figure S9. MS-ESI for compound 1.

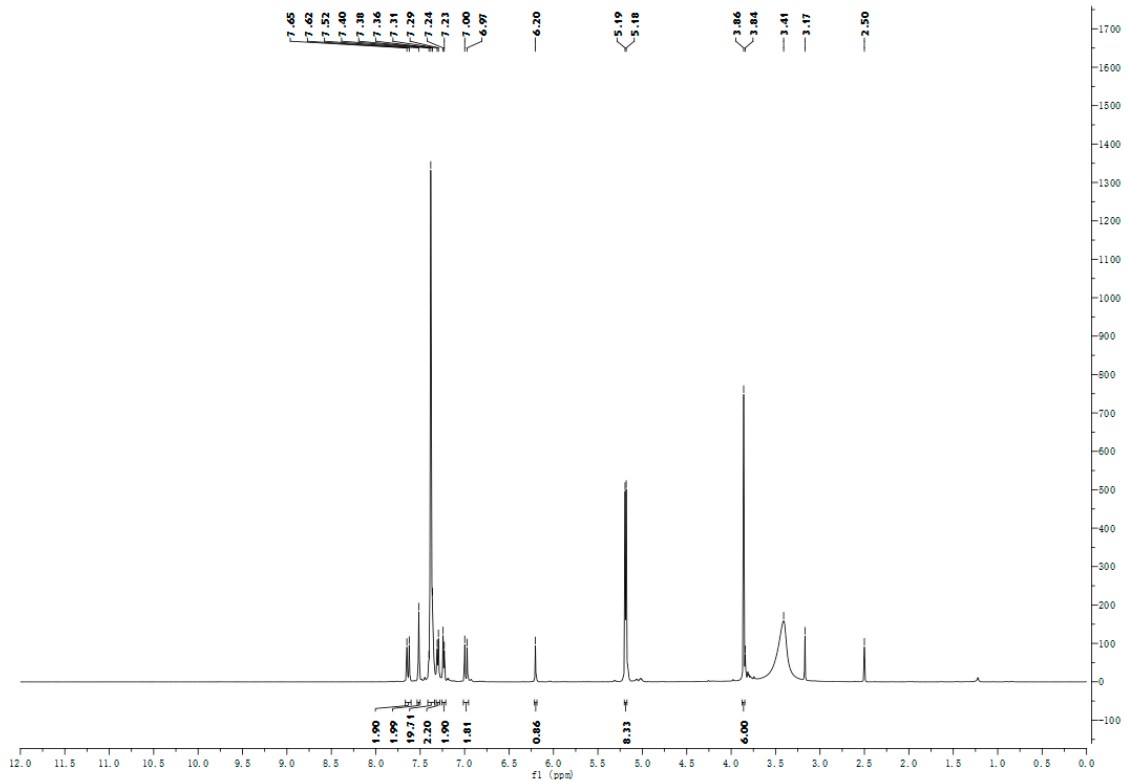


Figure S10. ¹H-NMR for compound 2.

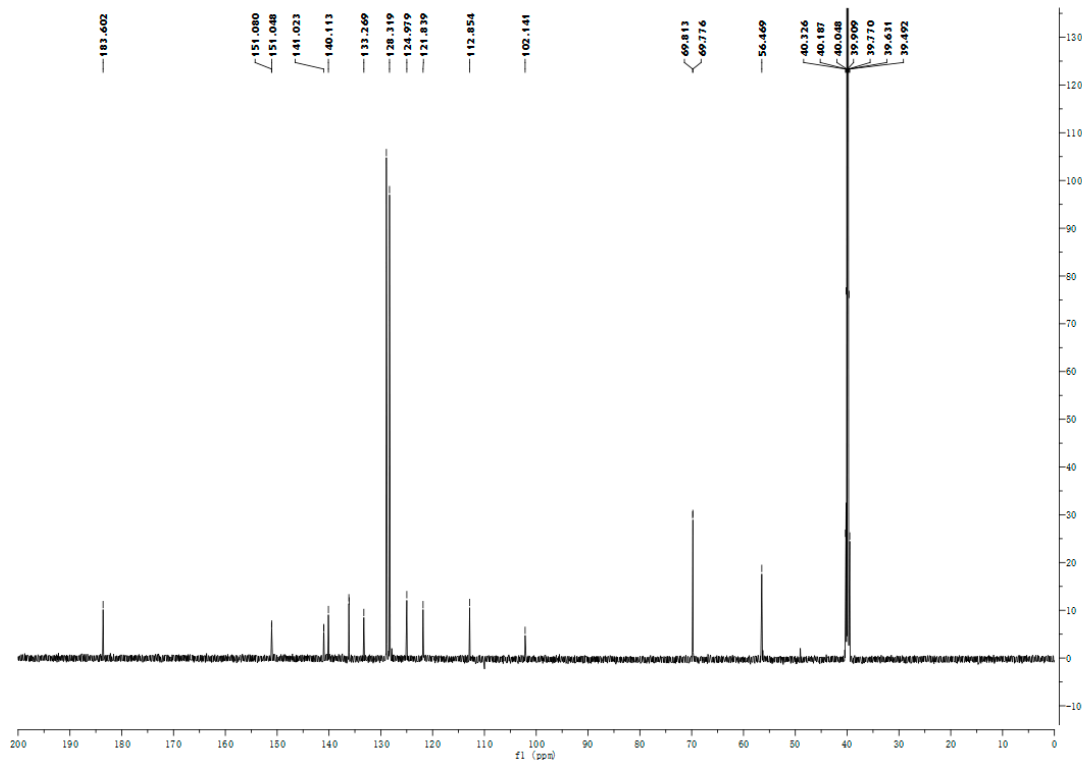


Figure S11. ¹³C-NMR for compound 2.

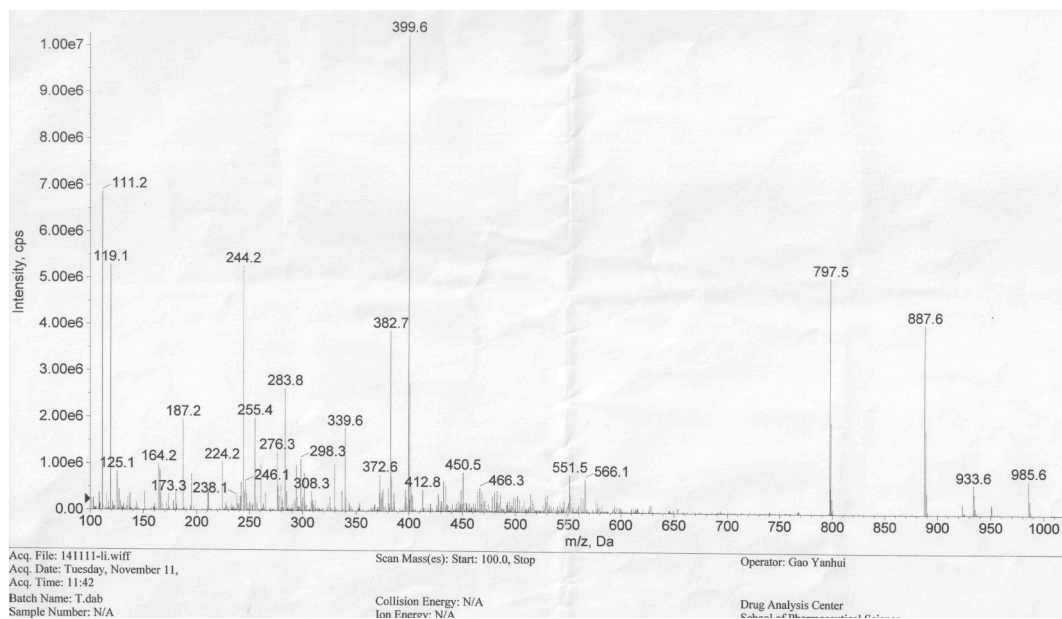


Figure S12. MS-ESI for compound 2.

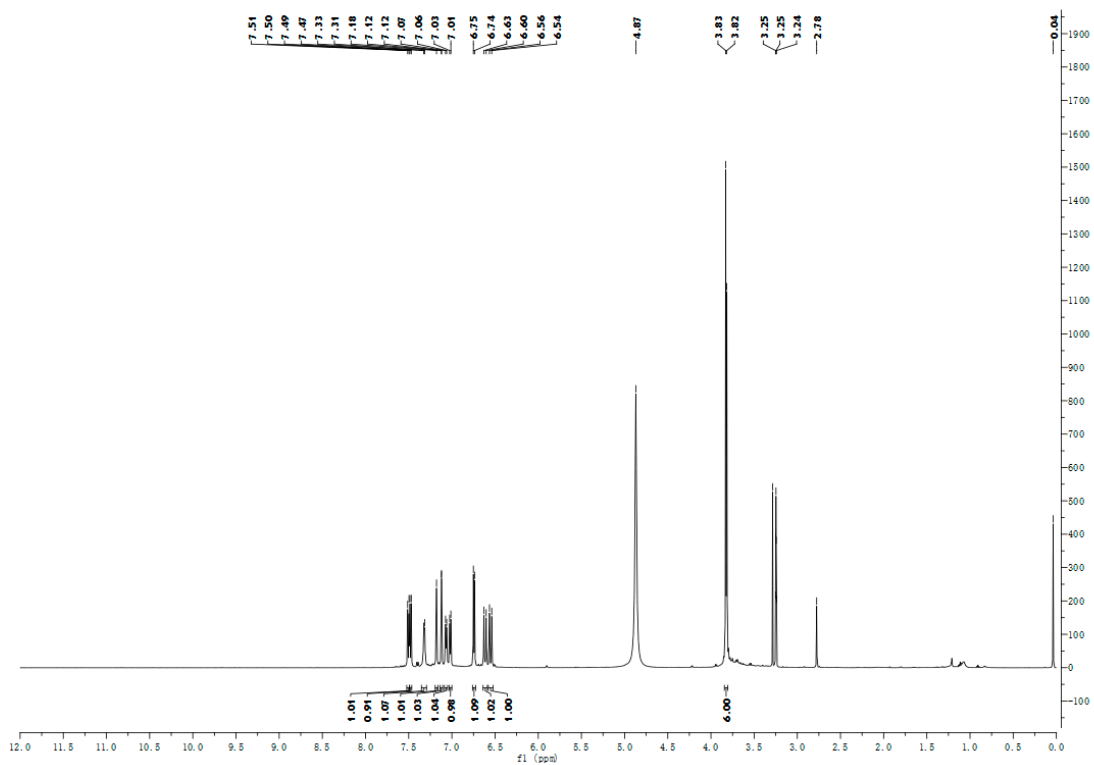


Figure S13. ¹H-NMR for compound 3.

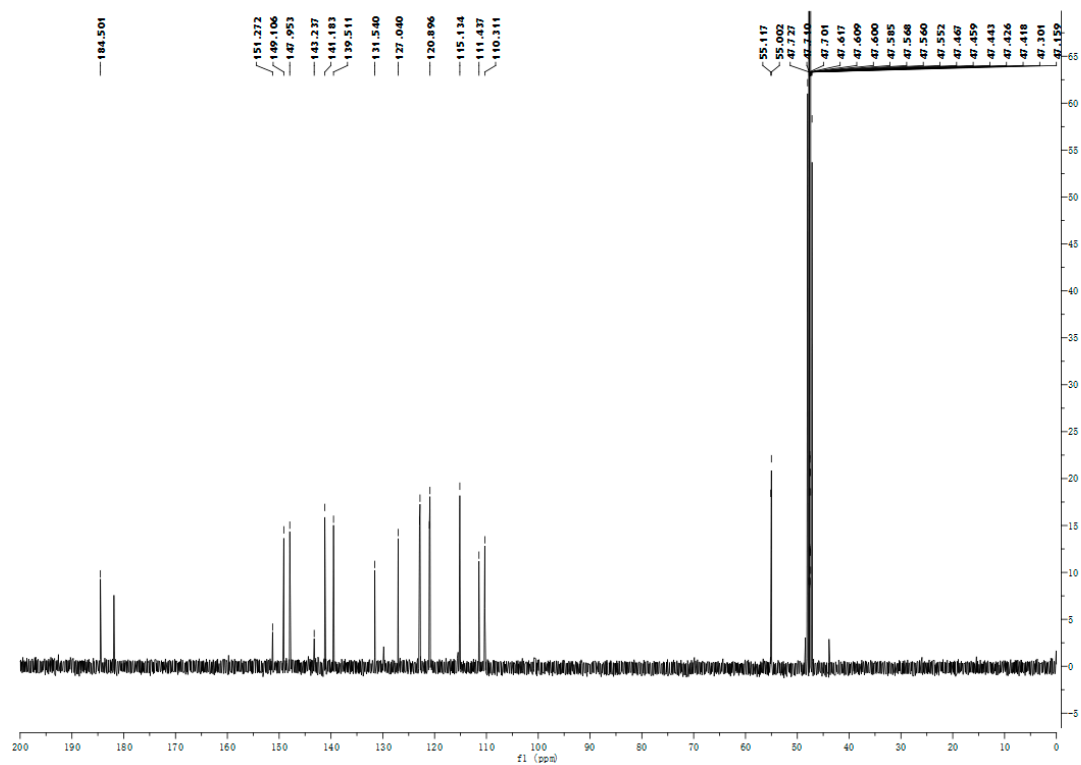


Figure S14. ^{13}C -NMR for compound 3.

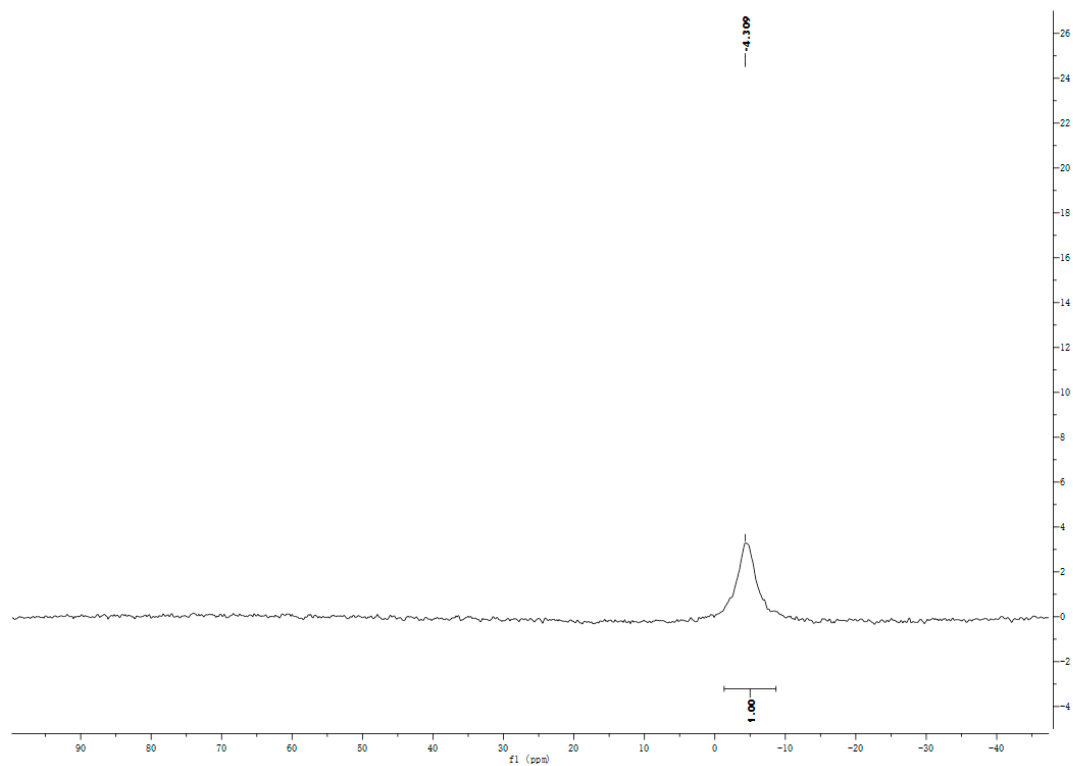


Figure S15. ^{31}P -NMR for compound 3.

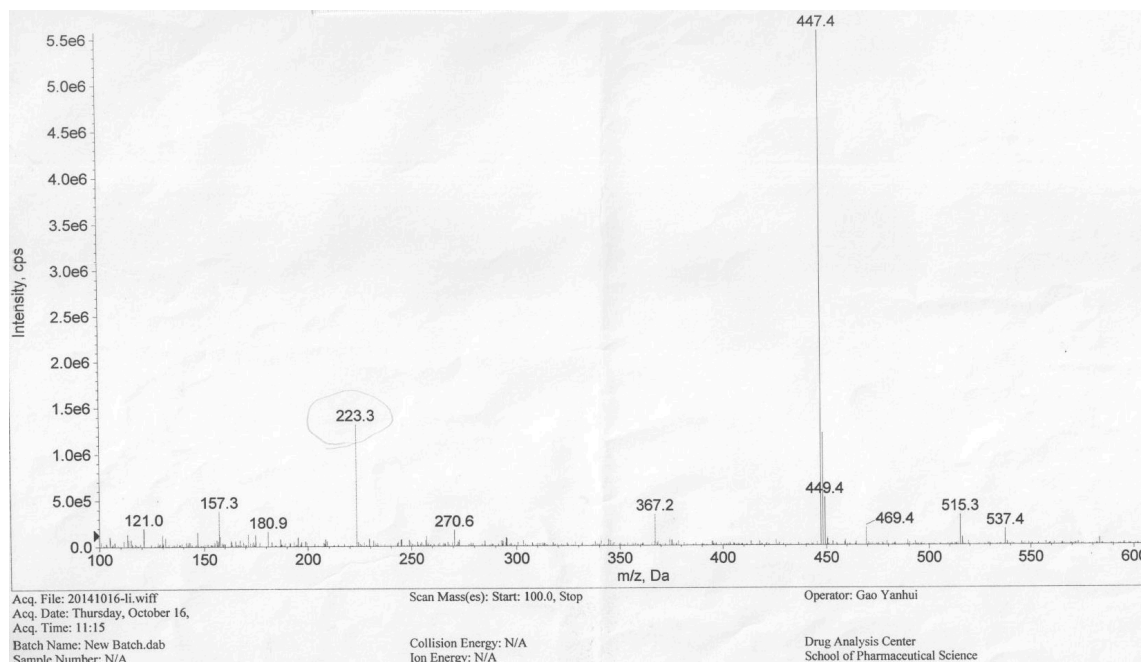


Figure S16. MS-ESI for compound 3.

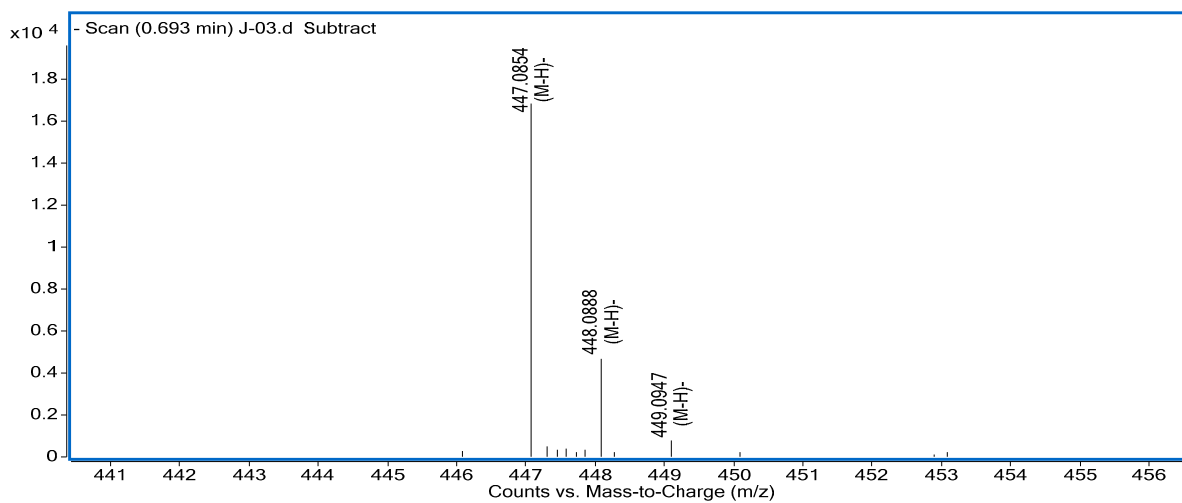


Figure S17. HRMS-ESI for compound 3.

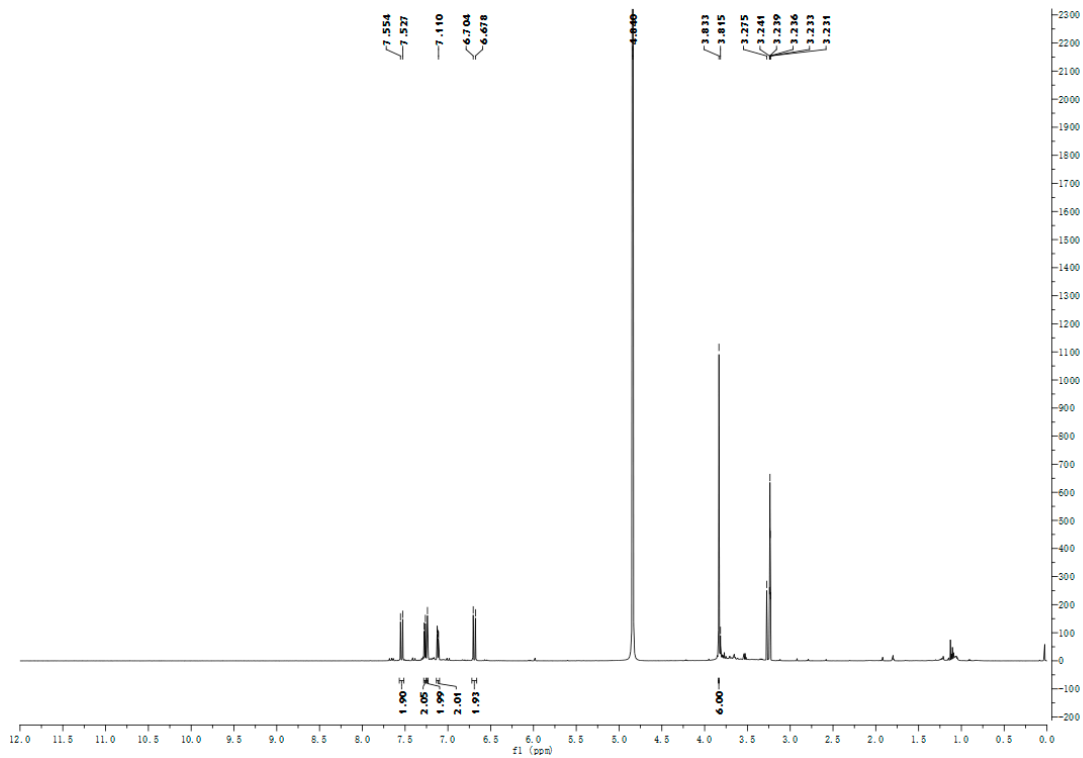


Figure S18. ¹H-NMR for compound 4.

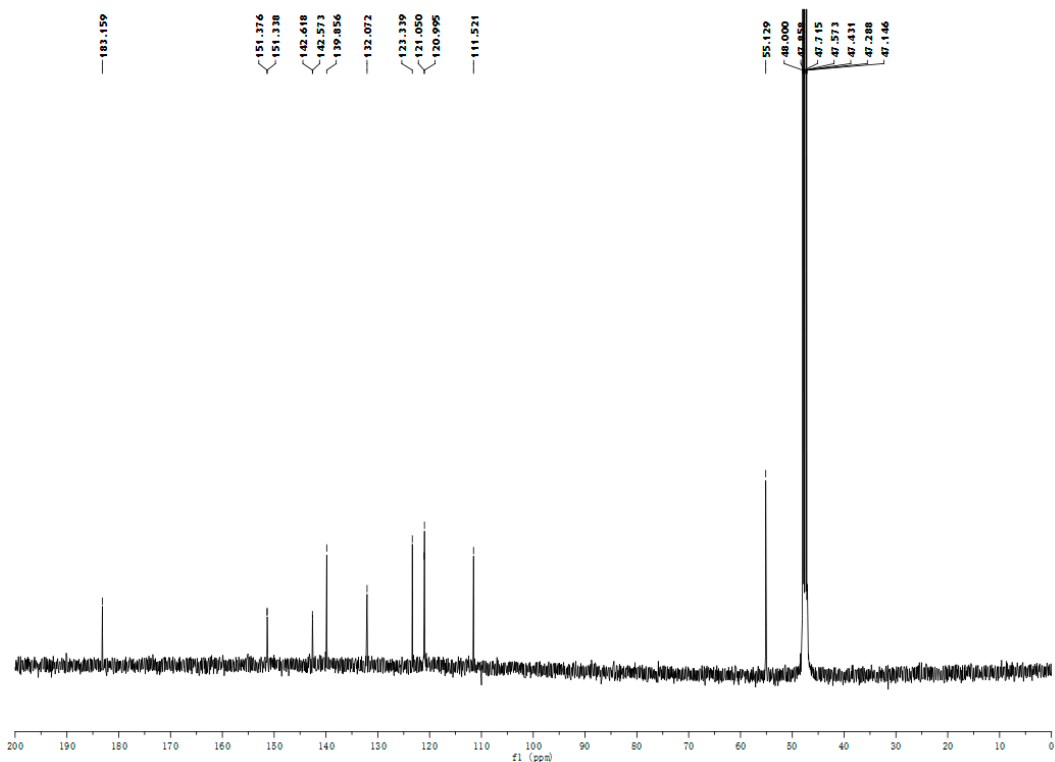


Figure S19. ¹³C-NMR for compound 4.

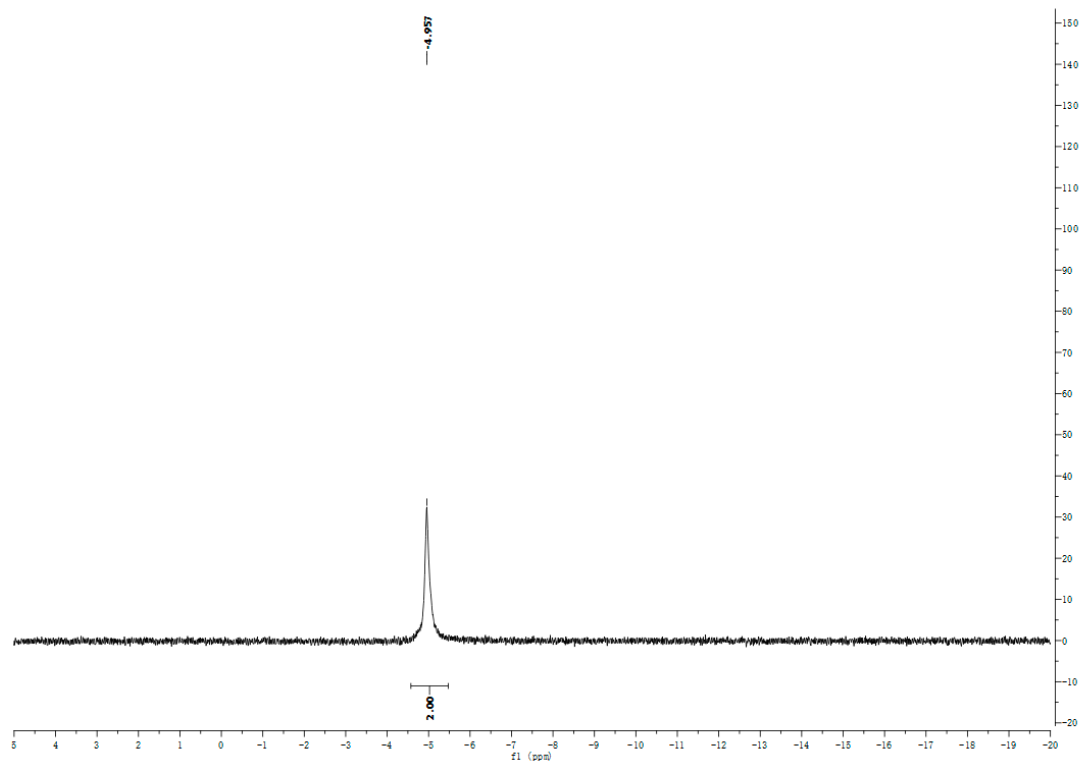


Figure S20. ³¹P-NMR for compound 4.

R.Time:0.183(Scan#:23)
MassPeaks:996 BasePeak:263(270259)
Spectrum Mode:Single 0.183(23)
BG Mode:None Polarity:Negative Segment 1 - Event 1

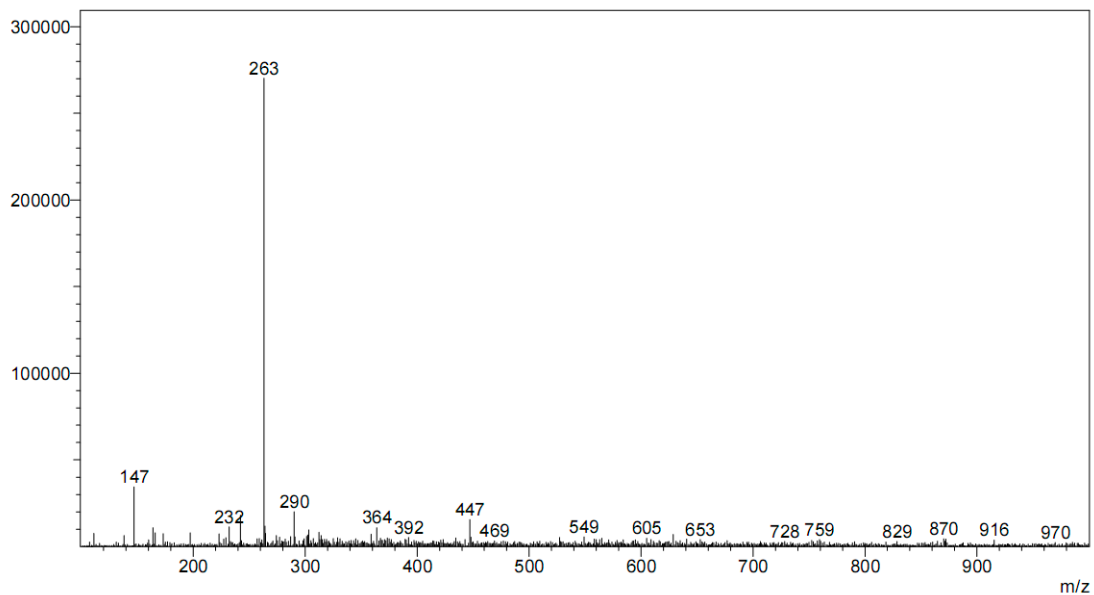


Figure S21. MS-ESI for compound 4.

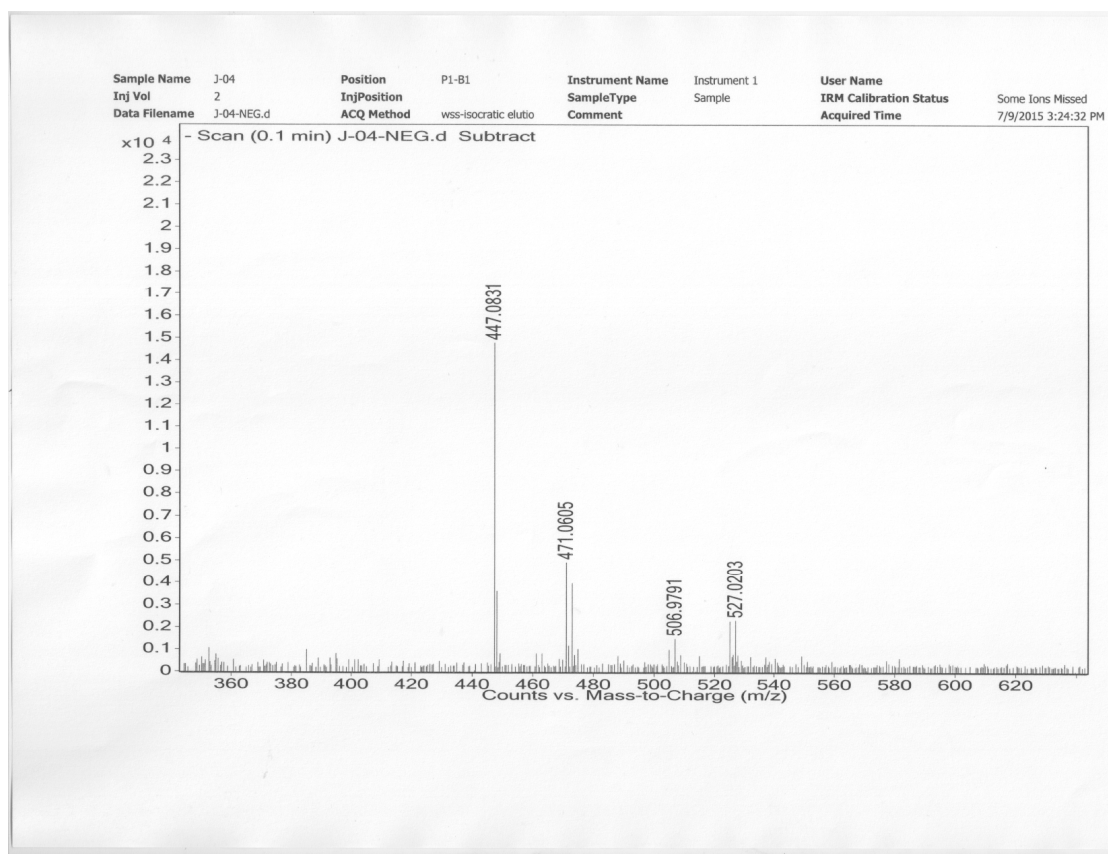


Figure S22. HRMS-ESI for compound 4.

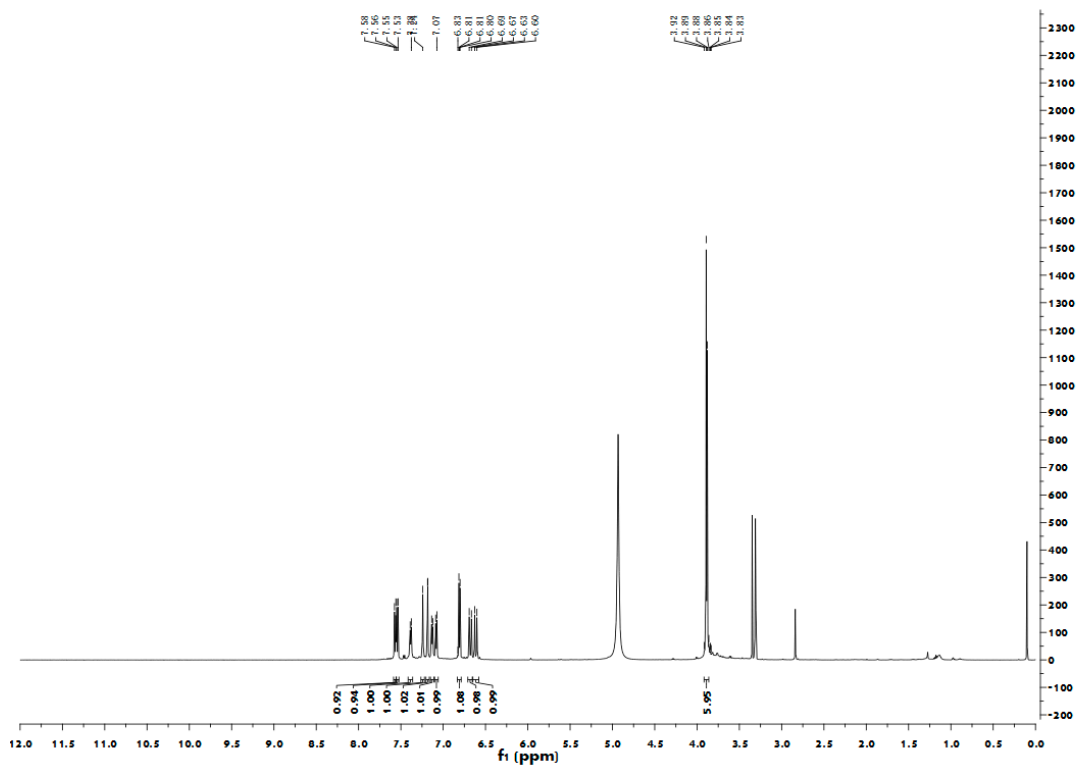


Figure S23. ^1H -NMR for compound 5.

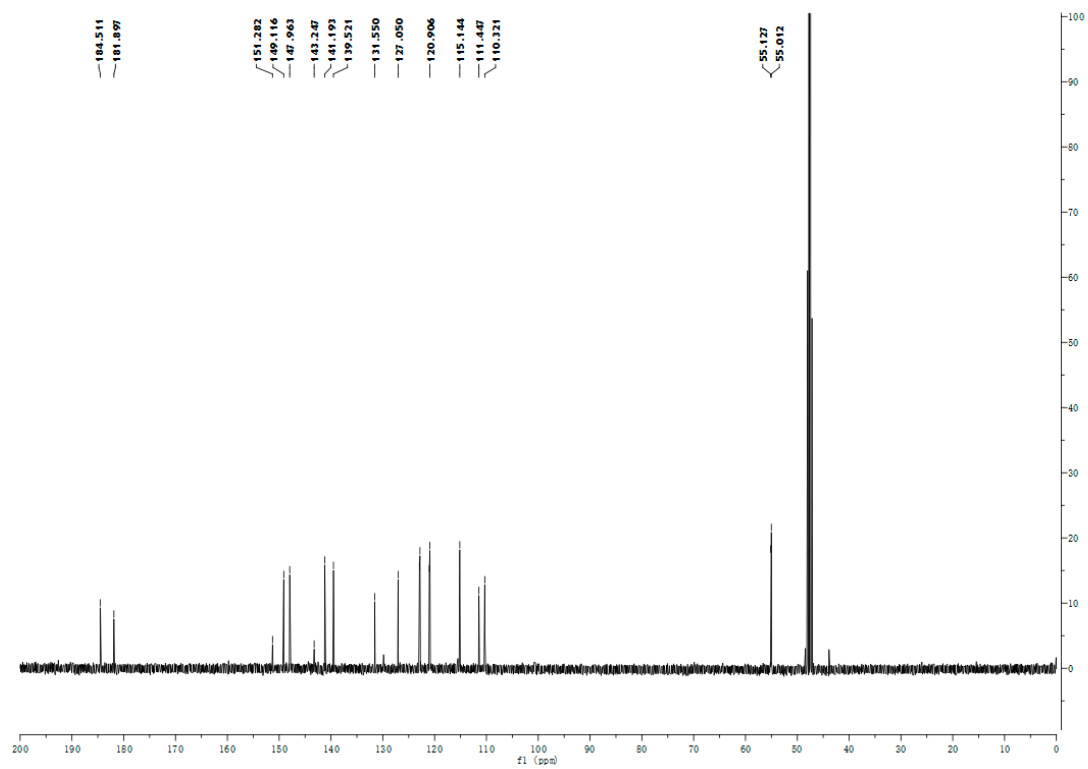


Figure S24. ^{13}C -NMR for compound 5.

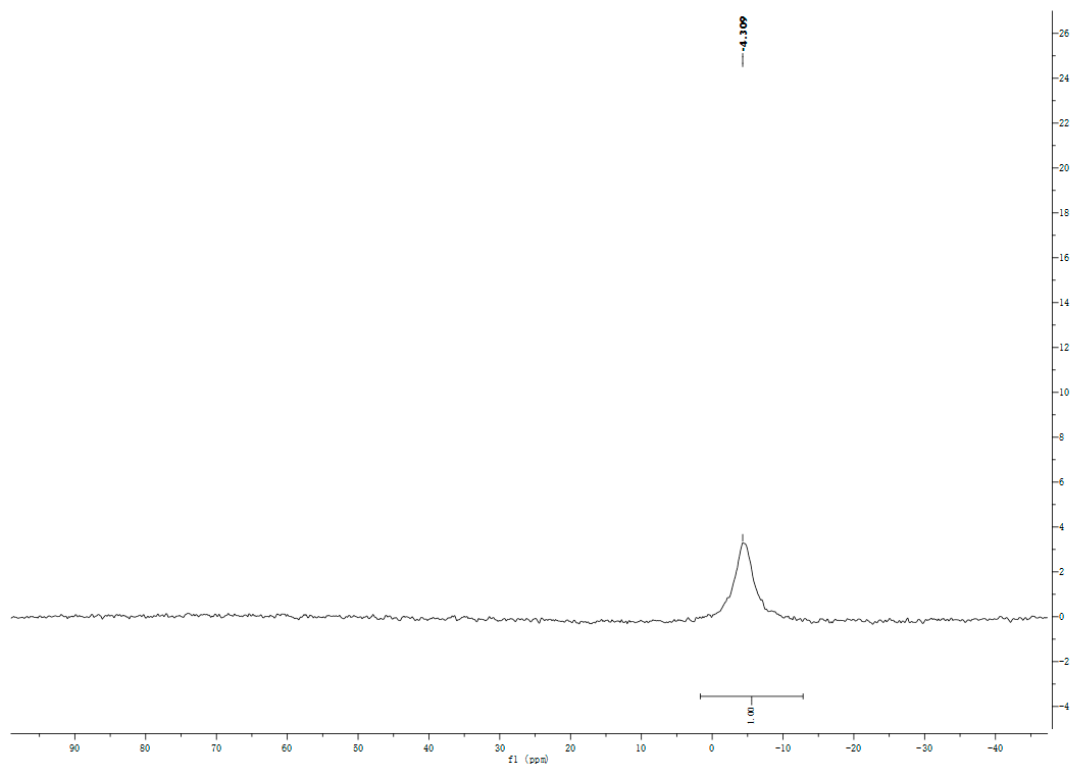


Figure S25. ^{31}P -NMR for compound 5.

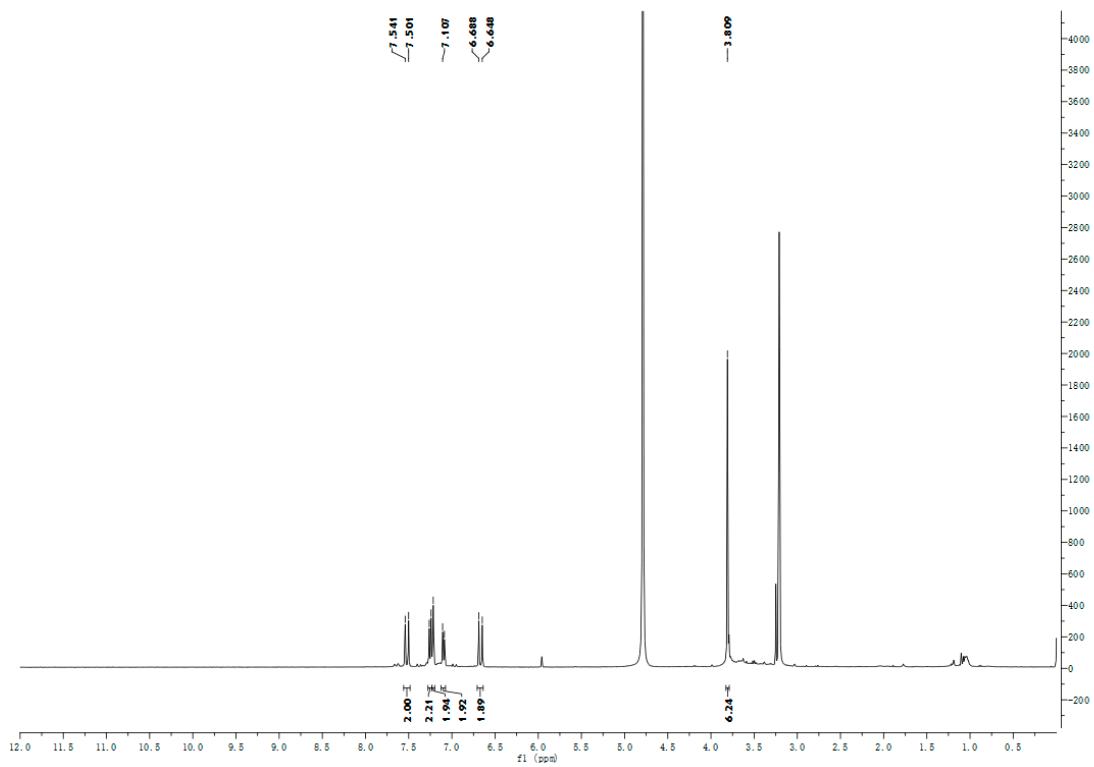


Figure S26. $^1\text{H-NMR}$ for compound 6.

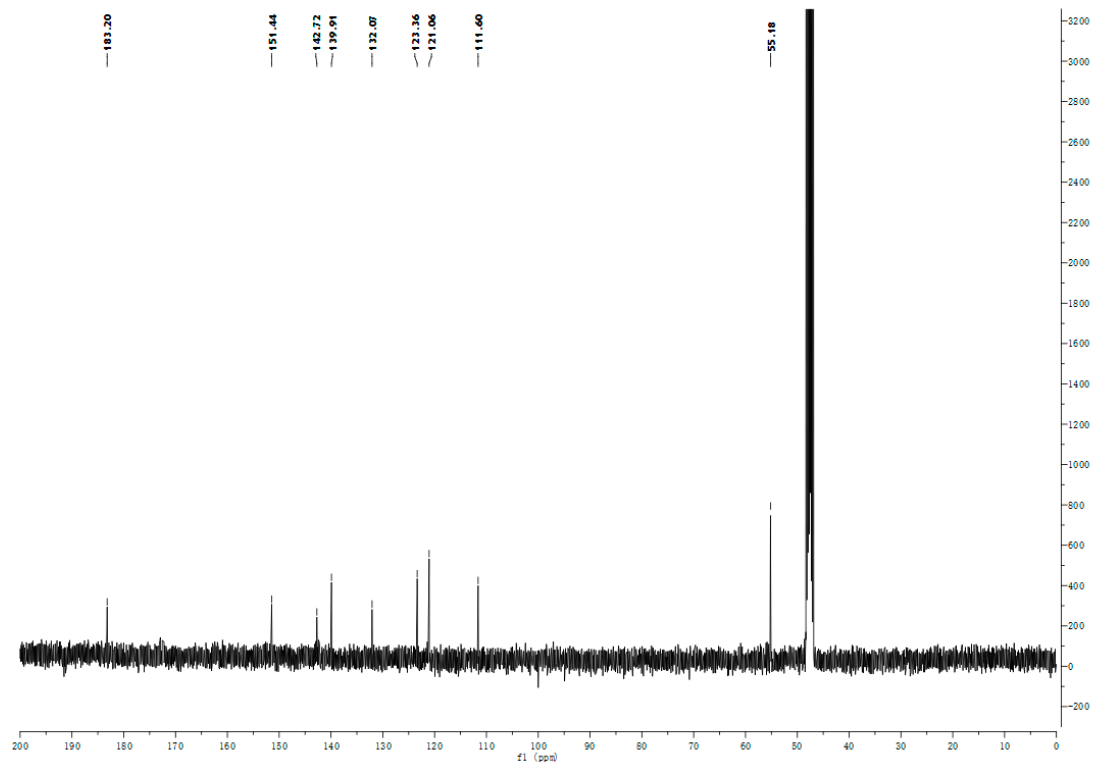


Figure S27. $^{13}\text{C-NMR}$ for compound 6.

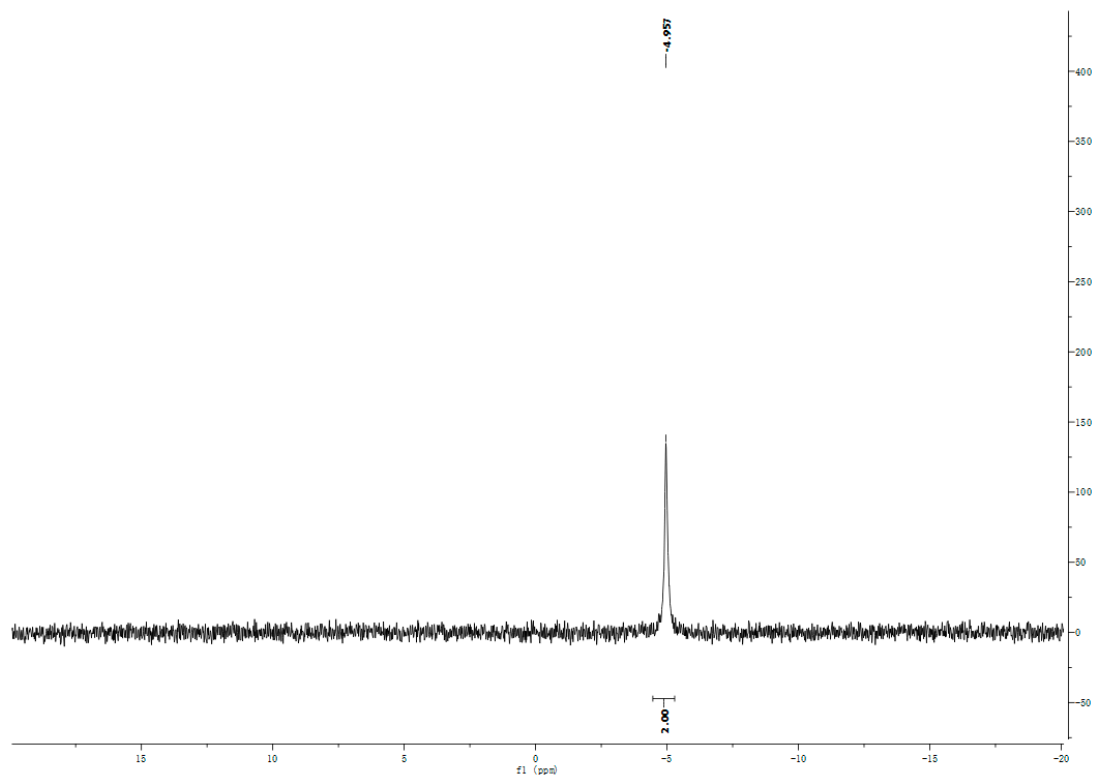


Figure S28. ³¹P-NMR for compound 6.

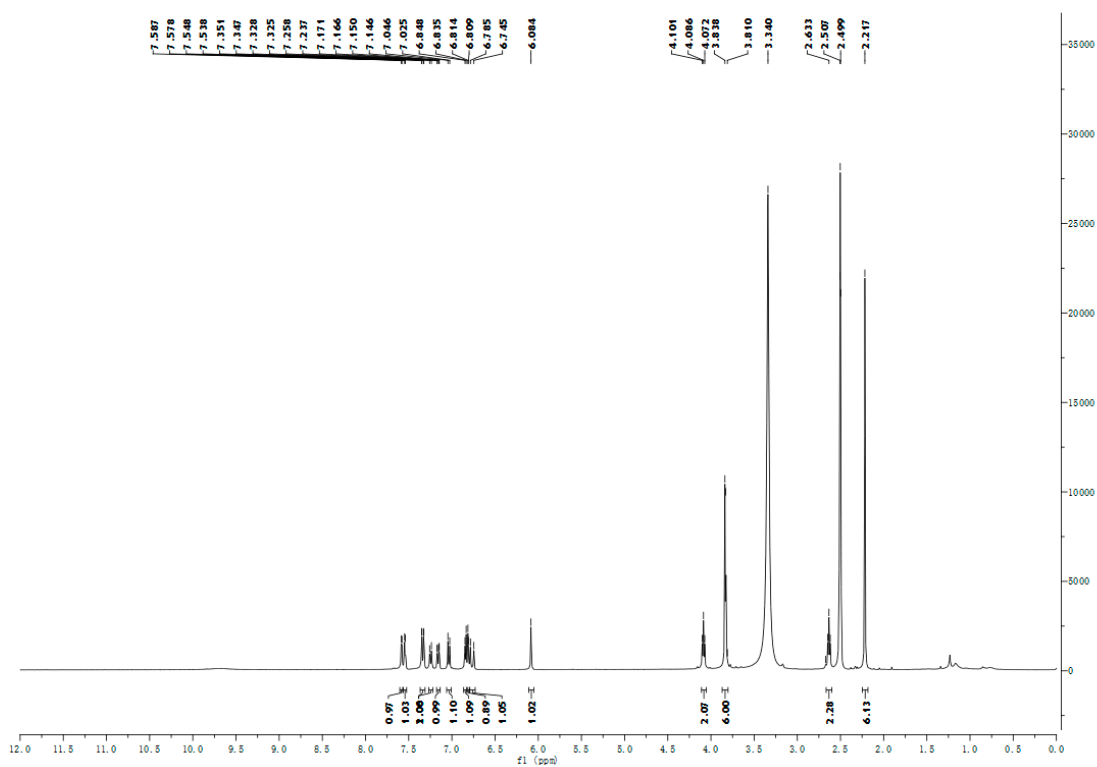


Figure S29. ¹H-NMR for compound 7.

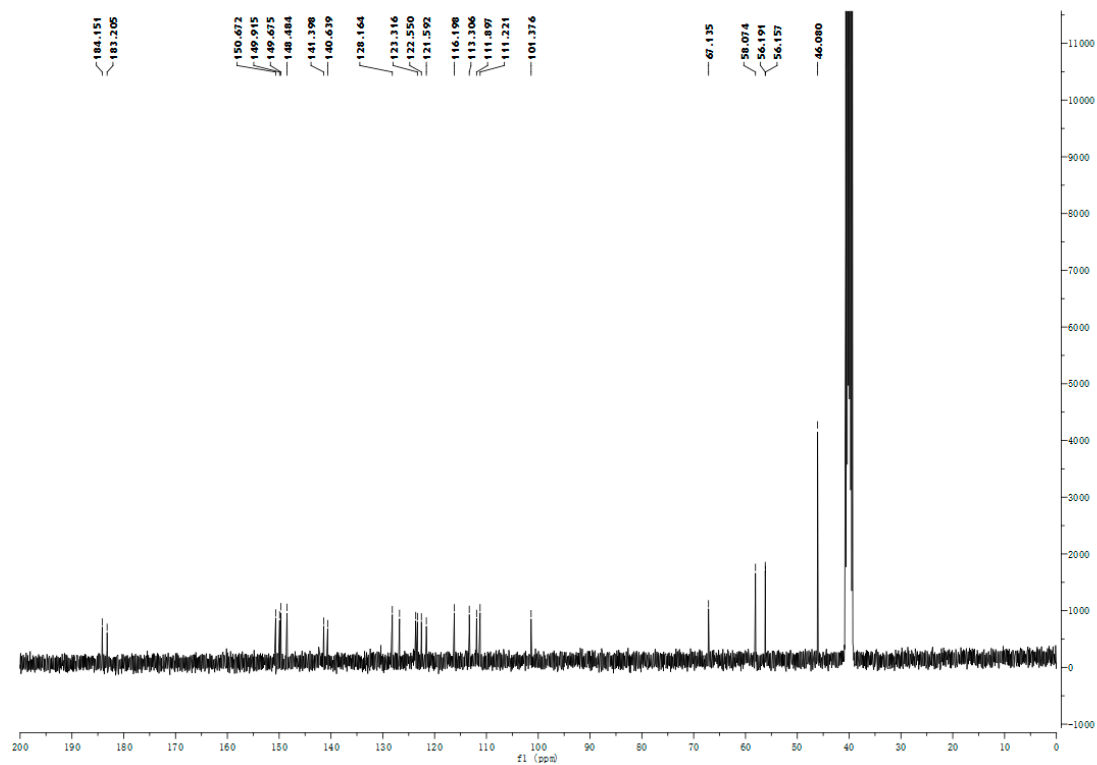


Figure S30. ¹³C-NMR for compound 7.

R.Time:1.292(Scan#:156)
MassPeaks:439 BasePeak:440(116788)
Spectrum Mode:Single 1.292(156)
BG Mode:Averaged 0.092-1.142(12-138) Polarity:Positive Segment 1 - Event 1

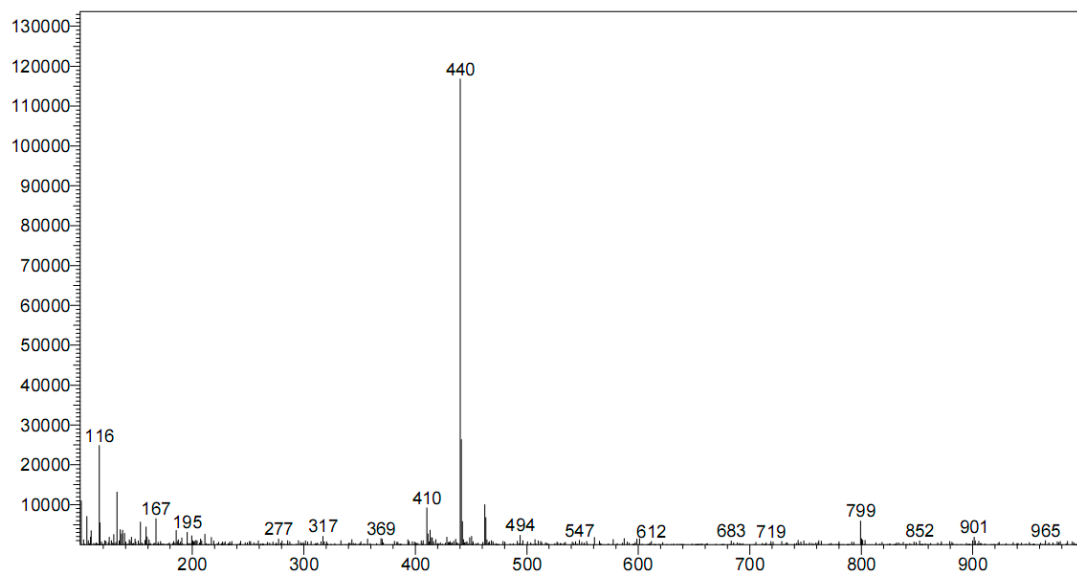


Figure S31. MS-ESI for compound 7.

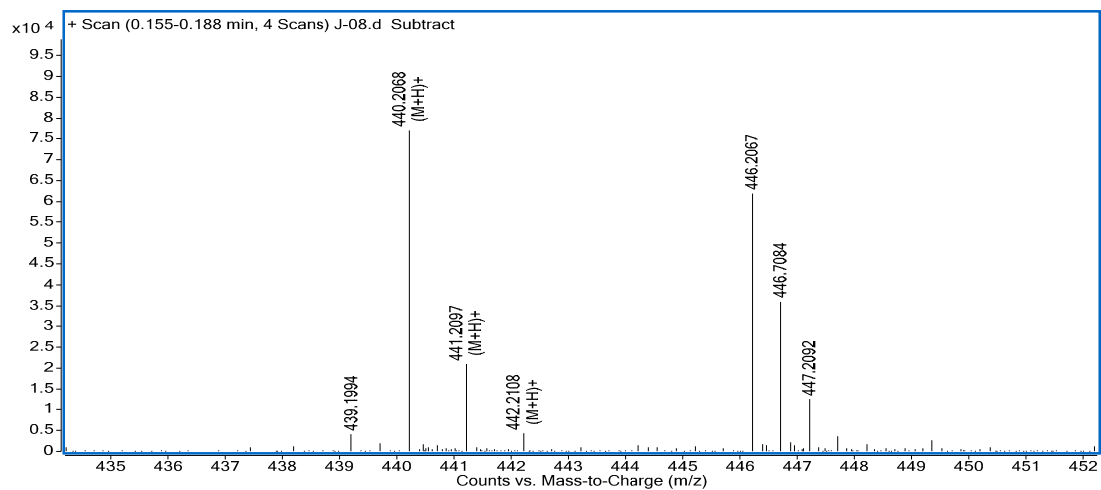


Figure S32. HRMS-ESI for compound 7.

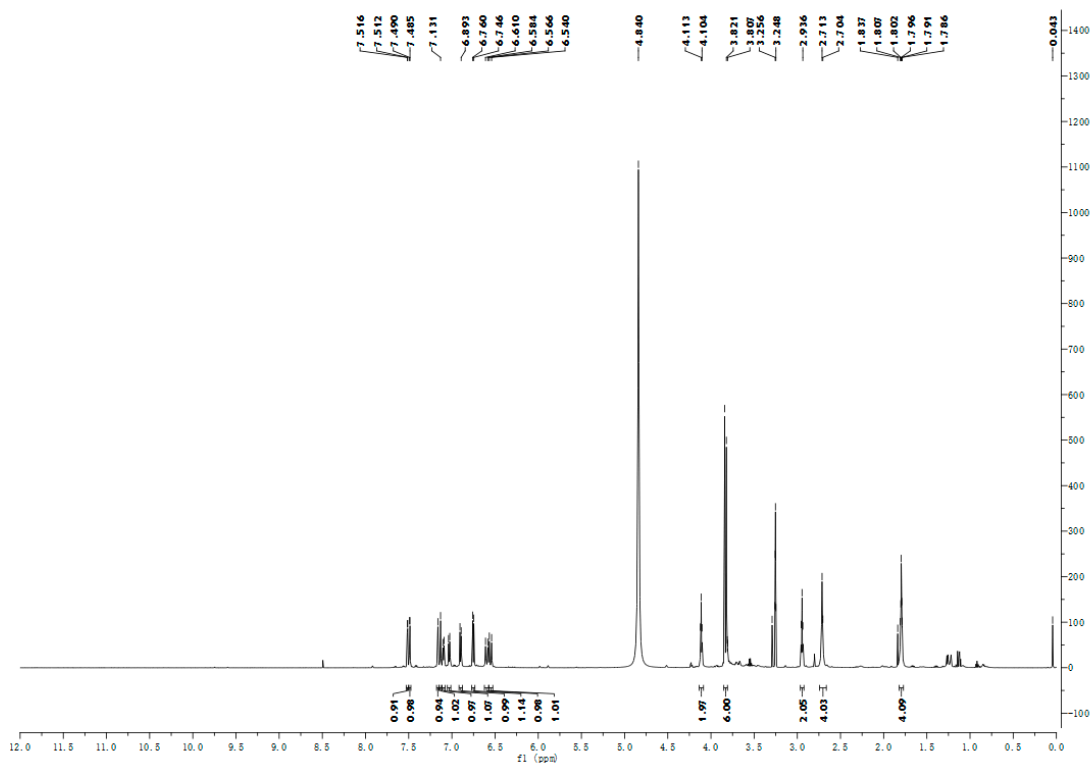


Figure S33. ¹H-NMR for compound 8.

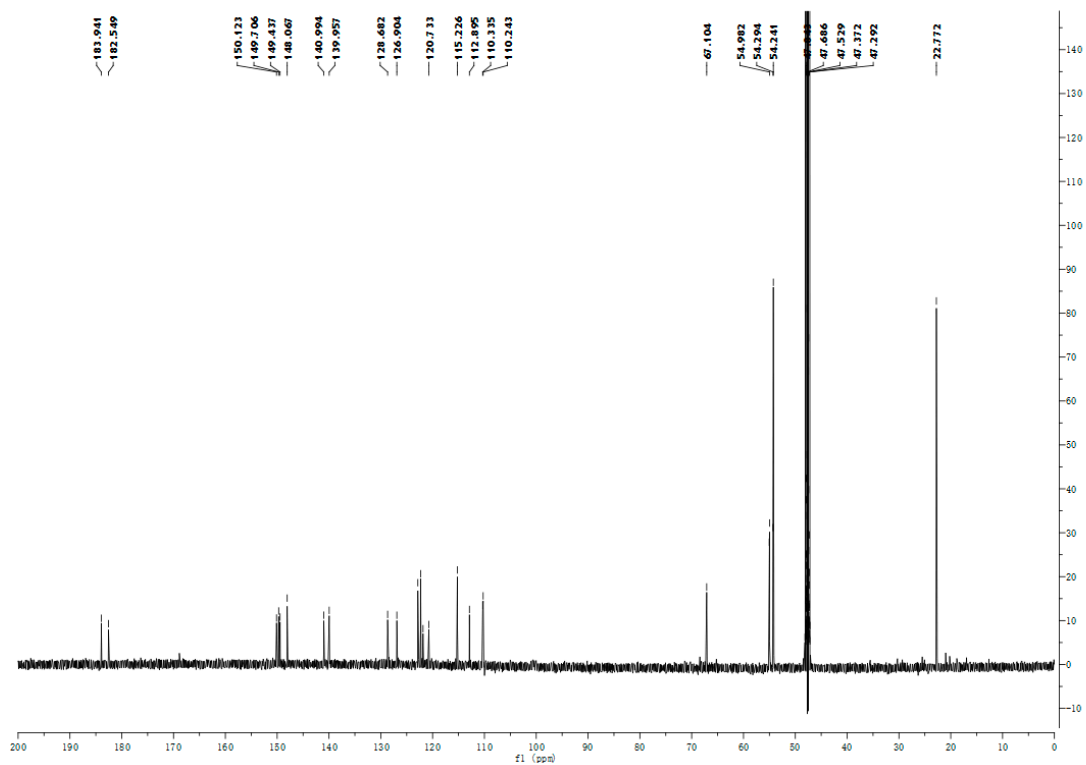


Figure S34. ^{13}C -NMR for compound 8.

R. Time: 0.508 (Scan#: 62)
 MassPeaks: 213 BasePeak: 466 (123500)
 Spectrum Mode: Single 0.508 (62)
 BG Mode: Averaged 0.025-0.342 (4-42) Polarity: Positive Segment 1 - Event 1

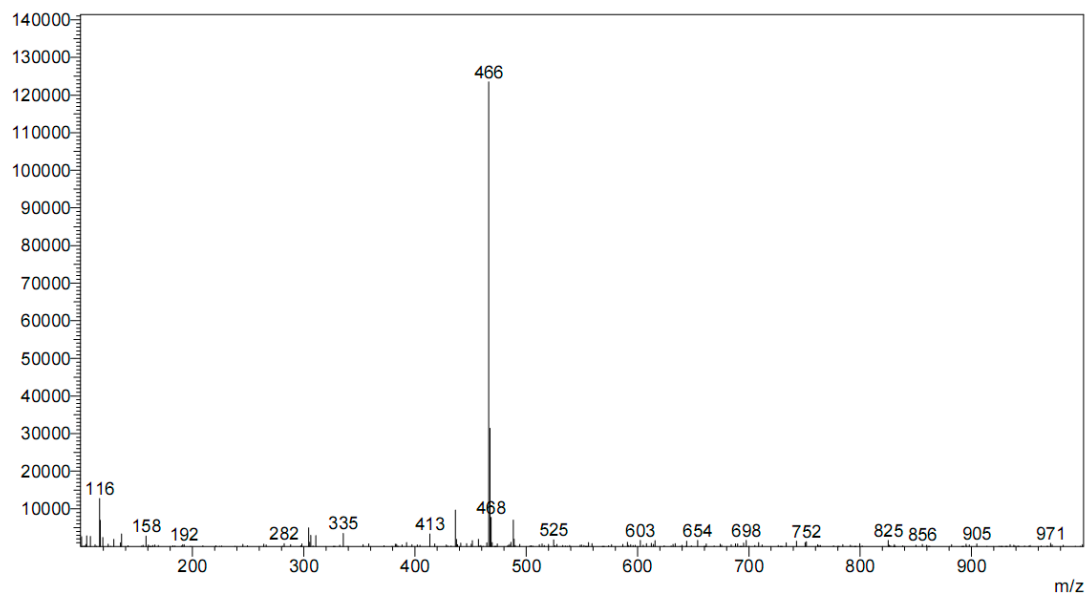


Figure S35. MS-ESI for compound 8.

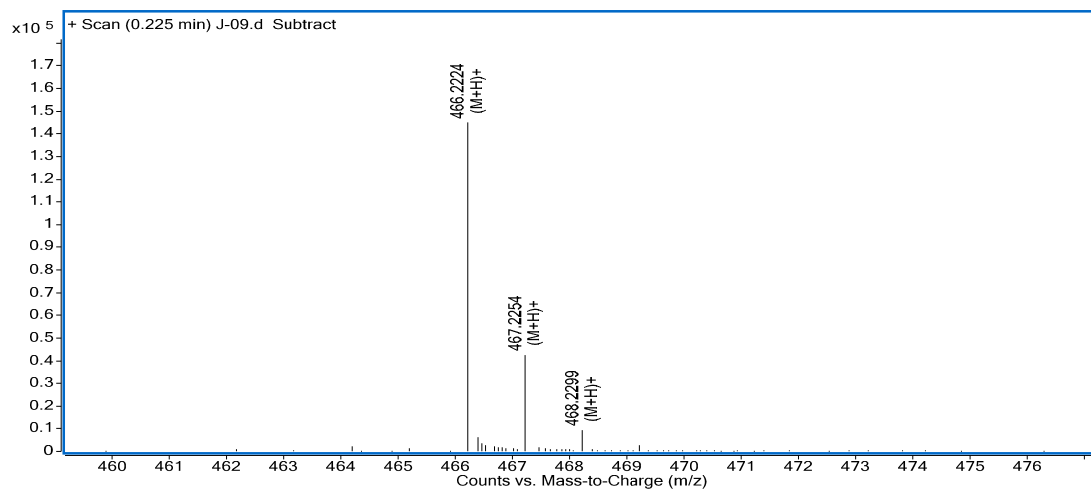


Figure S36. HRMS-ESI for compound 8.

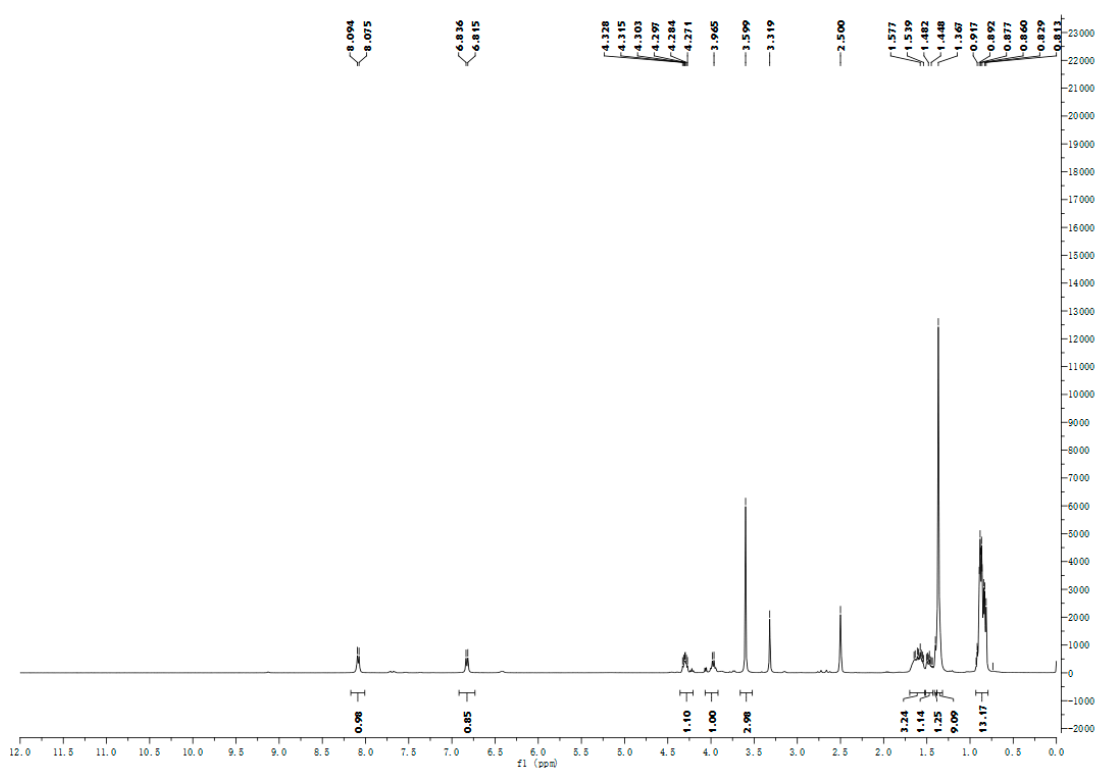


Figure S37. ¹H-NMR for compound Leu-01.

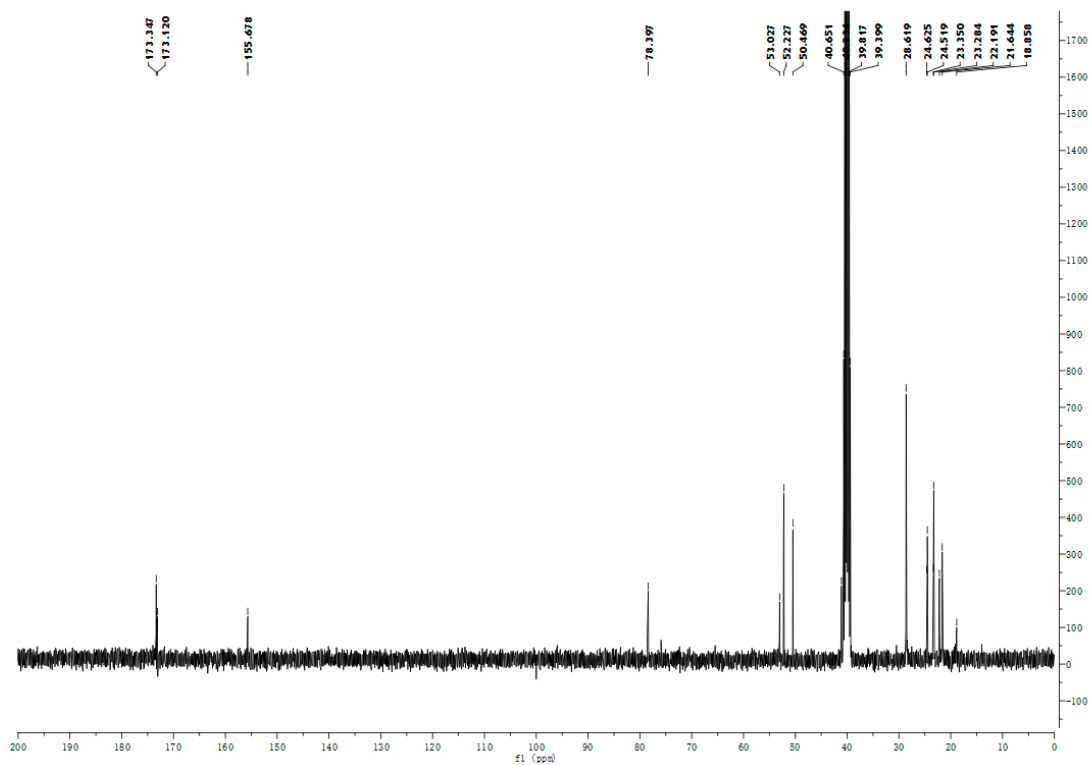


Figure S38. ^{13}C -NMR for compound Leu-01.

R.Time:0.783(Scan#:95)
 MassPeaks:545 BasePeak:381(1481153)
 Spectrum Mode:Single 0.783(95)
 BG Mode:Averaged 0.042-0.458(6-56) Polarity:Positive Segment 1 - Event 1

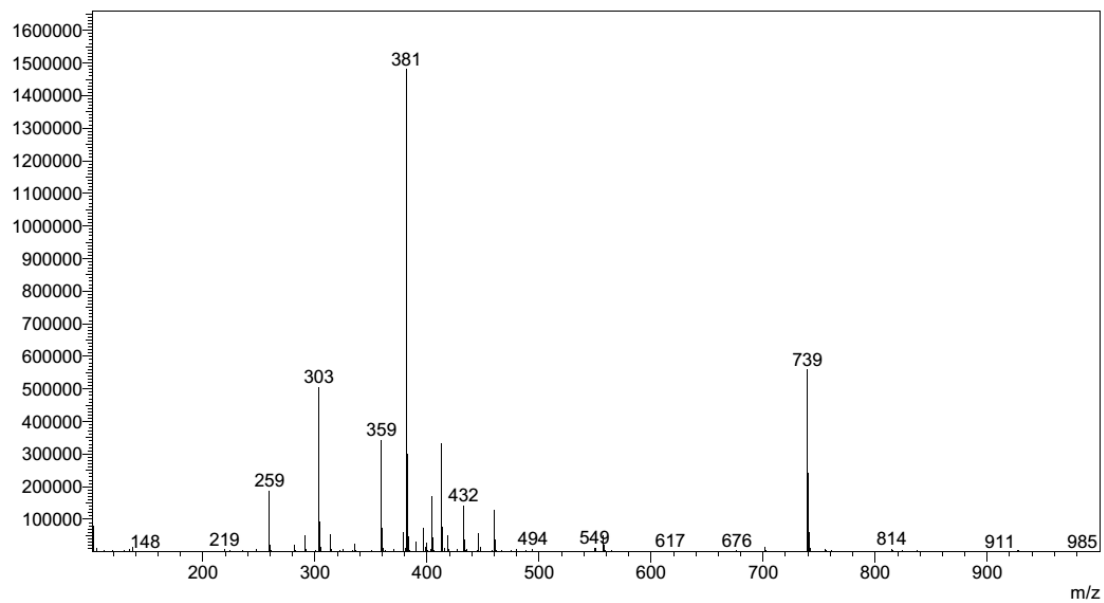


Figure S39. MS-ESI for compound Leu-01.

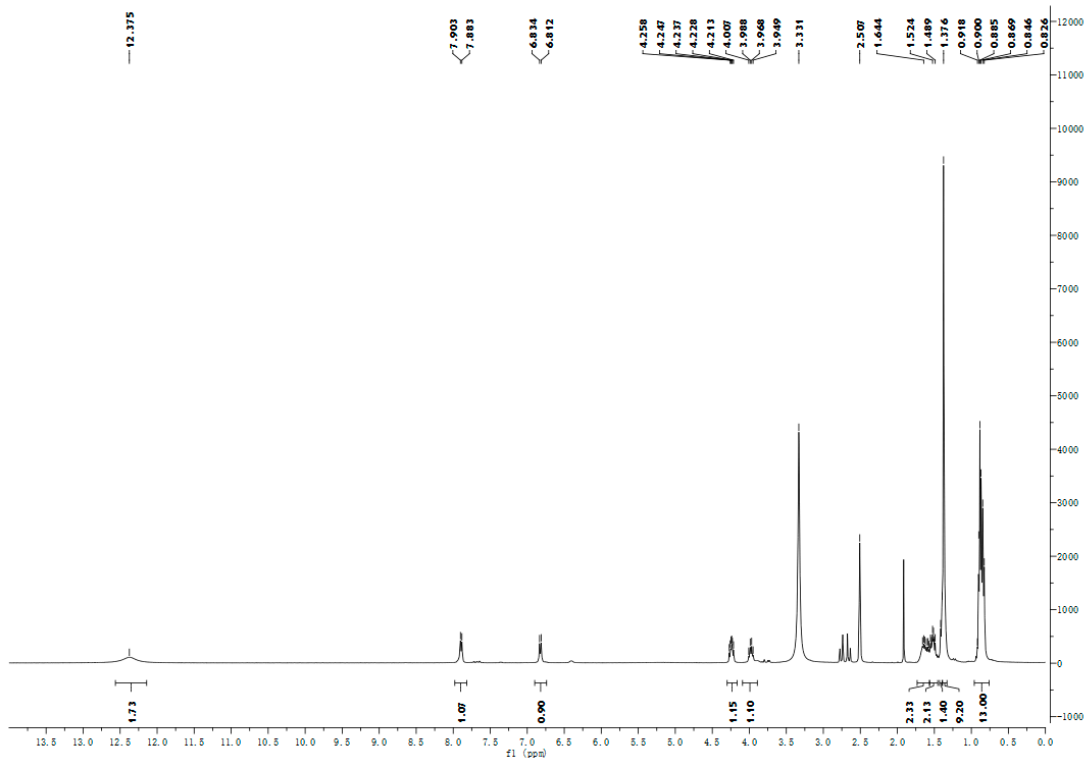


Figure S40. ¹H-NMR for compound Leu-02.

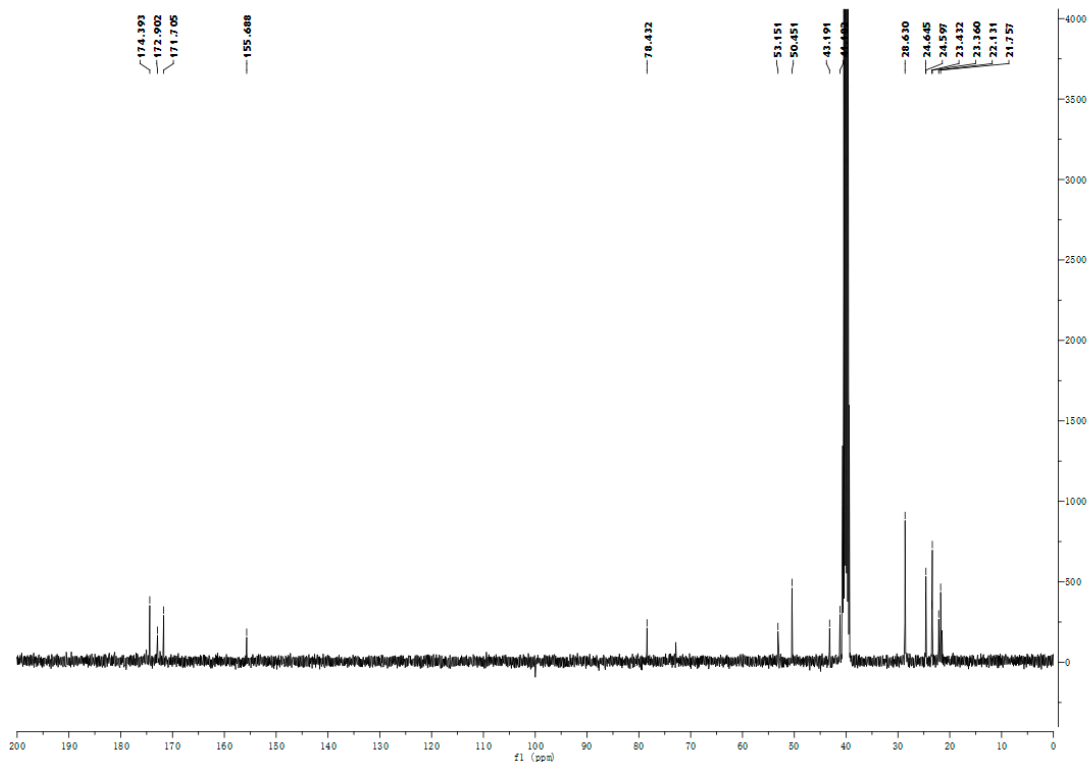


Figure S41. ¹³C-NMR for compound Leu-02.

R.Time:0.225(Scan#:28)
MassPeaks:937 BasePeak:343(839367)
Spectrum Mode:Single 0.225(28)
BG Mode:None Polarity:Negative Segment 1 - Event 1

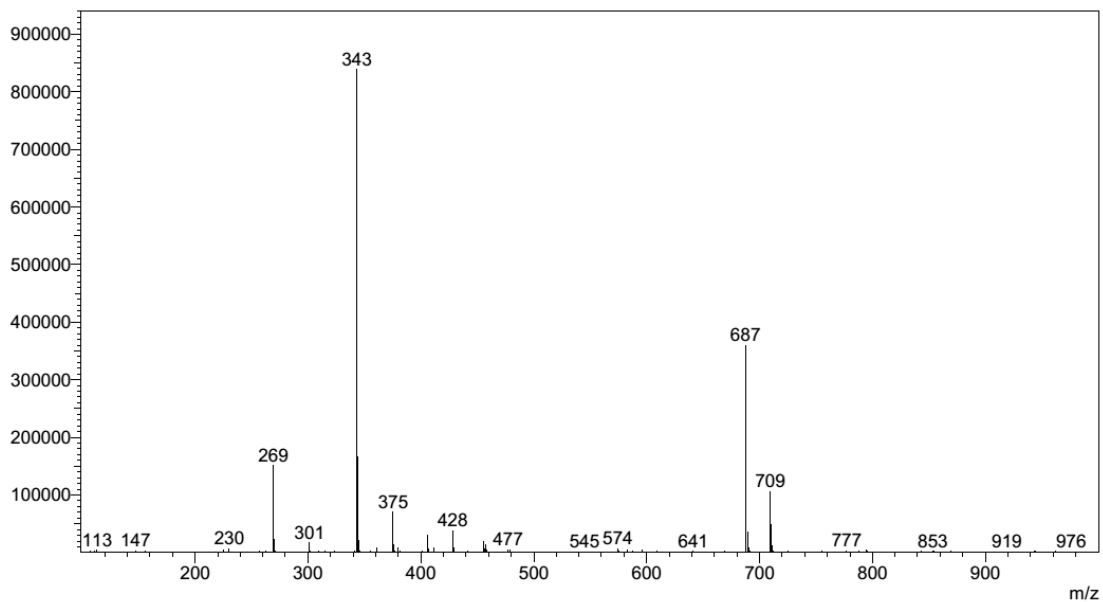


Figure S42. MS-ESI for compound Leu-02.

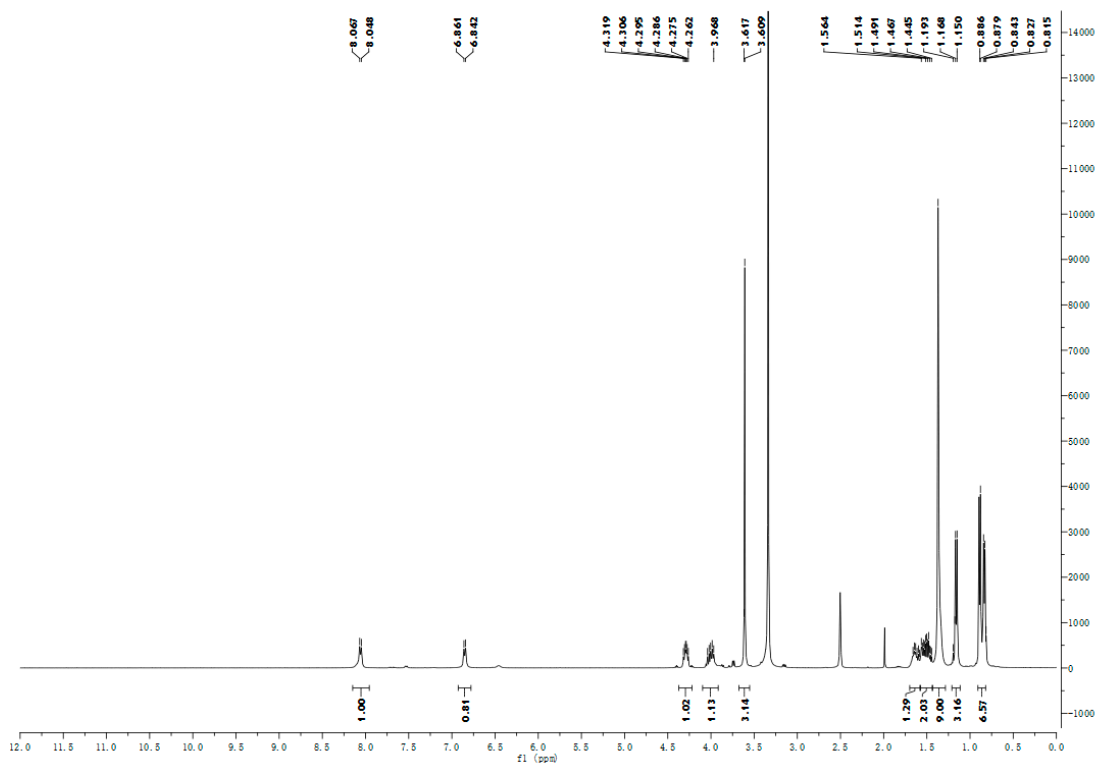


Figure S43. ¹H-NMR for compound Leu-03.

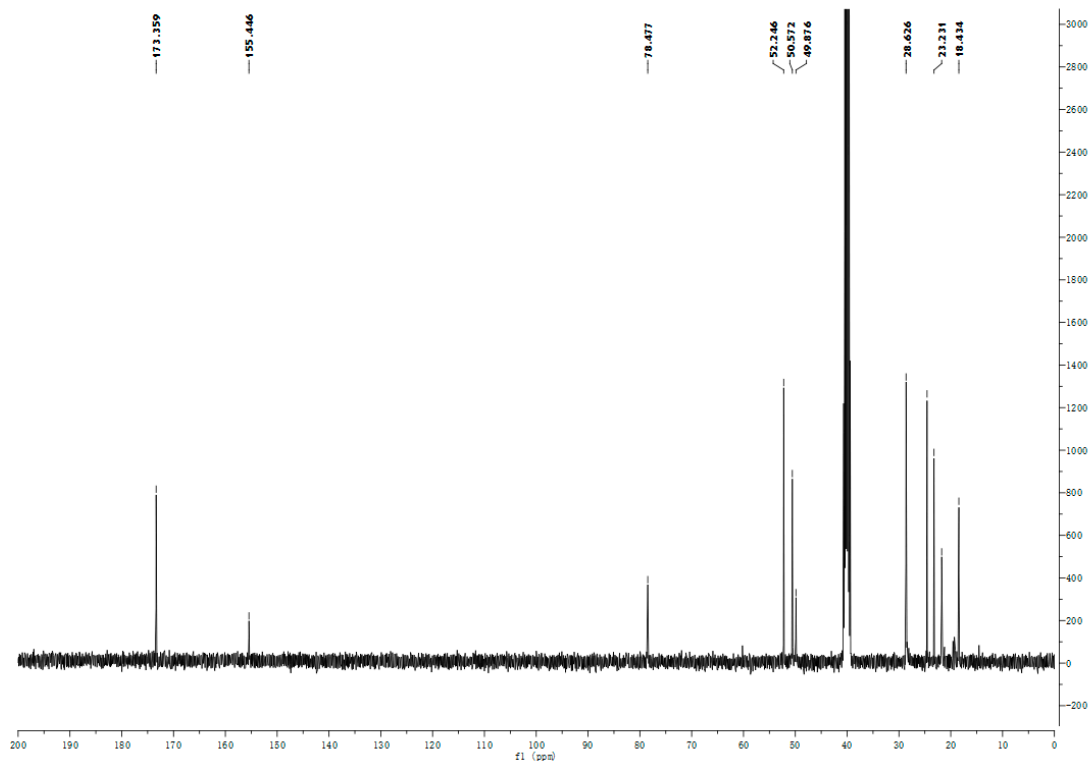


Figure S44. ¹³C-NMR for compound Leu-03.

R.Time:0.208(Scan#:26)
 MassPeaks:963 BasePeak:339(2375134)
 Spectrum Mode:Single 0.208(26)
 BG Mode:None Polarity:Positive Segment 1 - Event 1

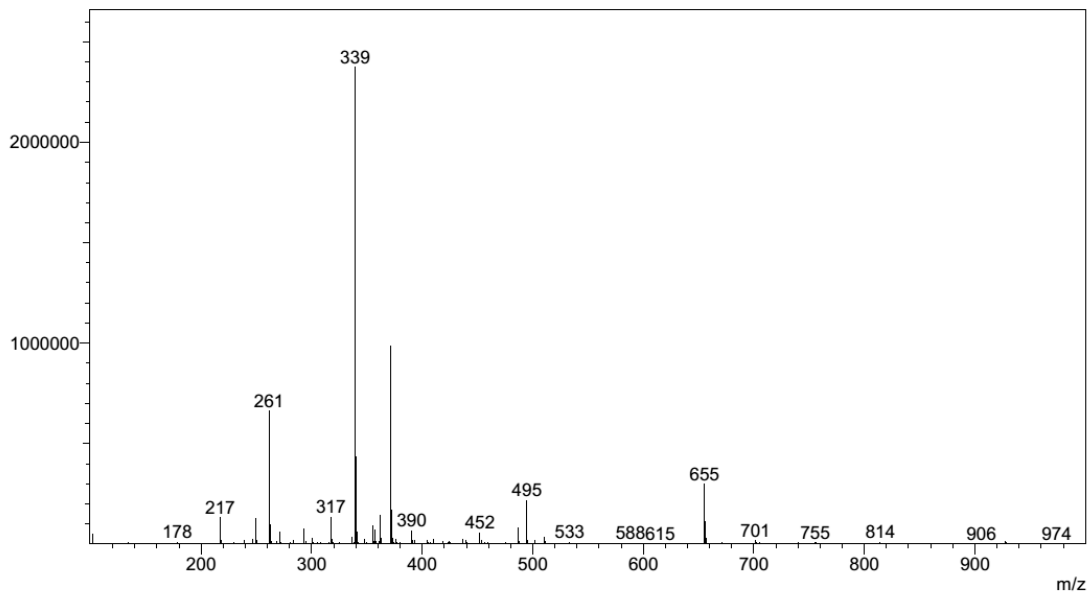


Figure S45. MS-ESI for compound Leu-03.

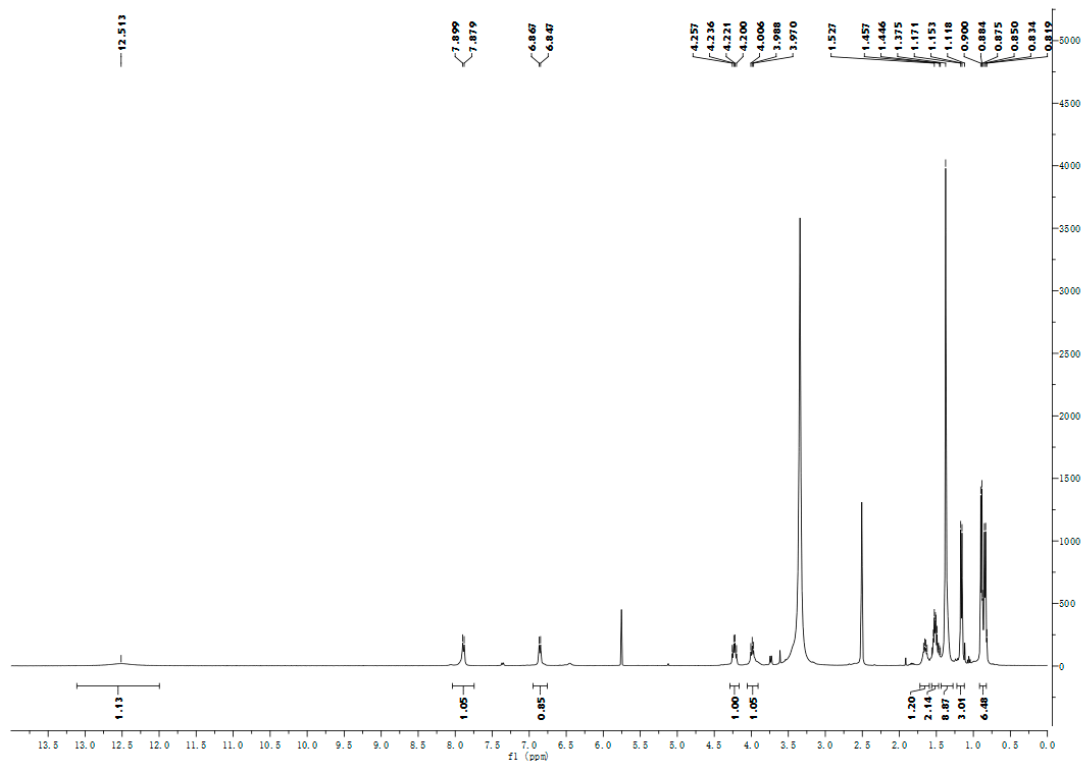


Figure S46. ¹H-NMR for compound Leu-04.

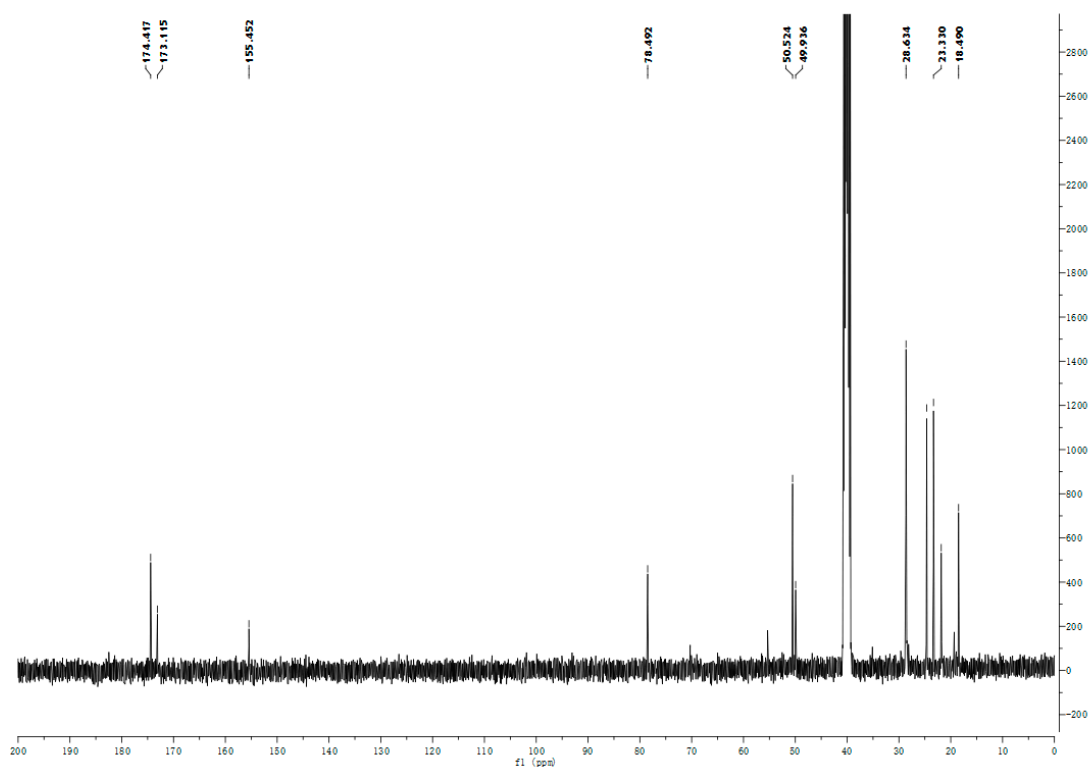


Figure S47. ¹³C-NMR for compound Leu-04.

R.Time:0.800(Scan#:97)
MassPeaks:944 BasePeak:301(204057)
Spectrum Mode:Single 0.800(97)
BG Mode:None Polarity:Negative Segment 1 - Event 1

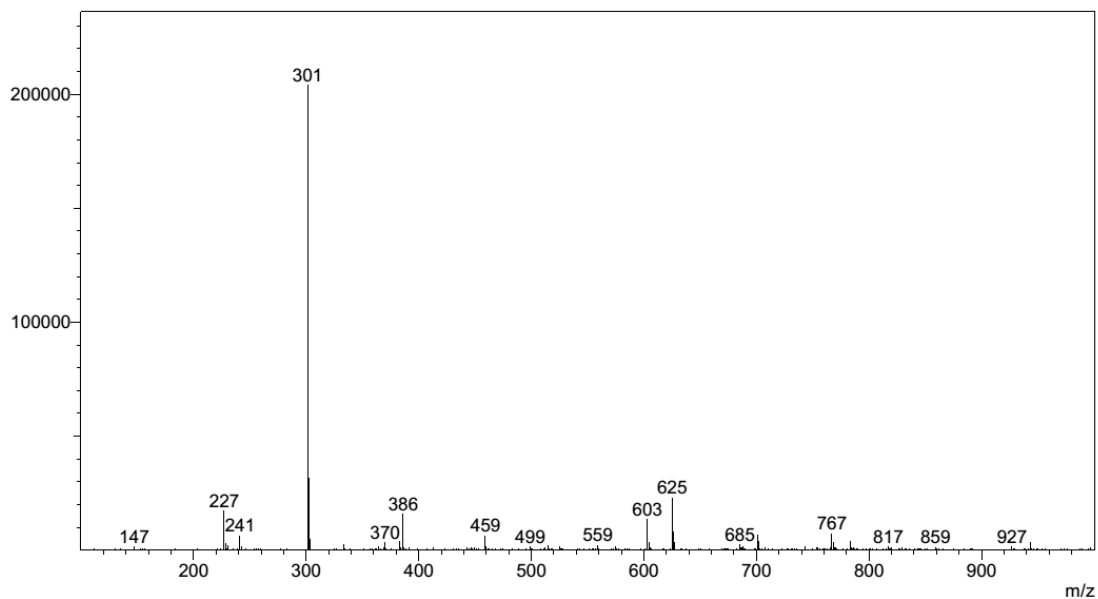


Figure S48. MS-ESI for compound Leu-04.

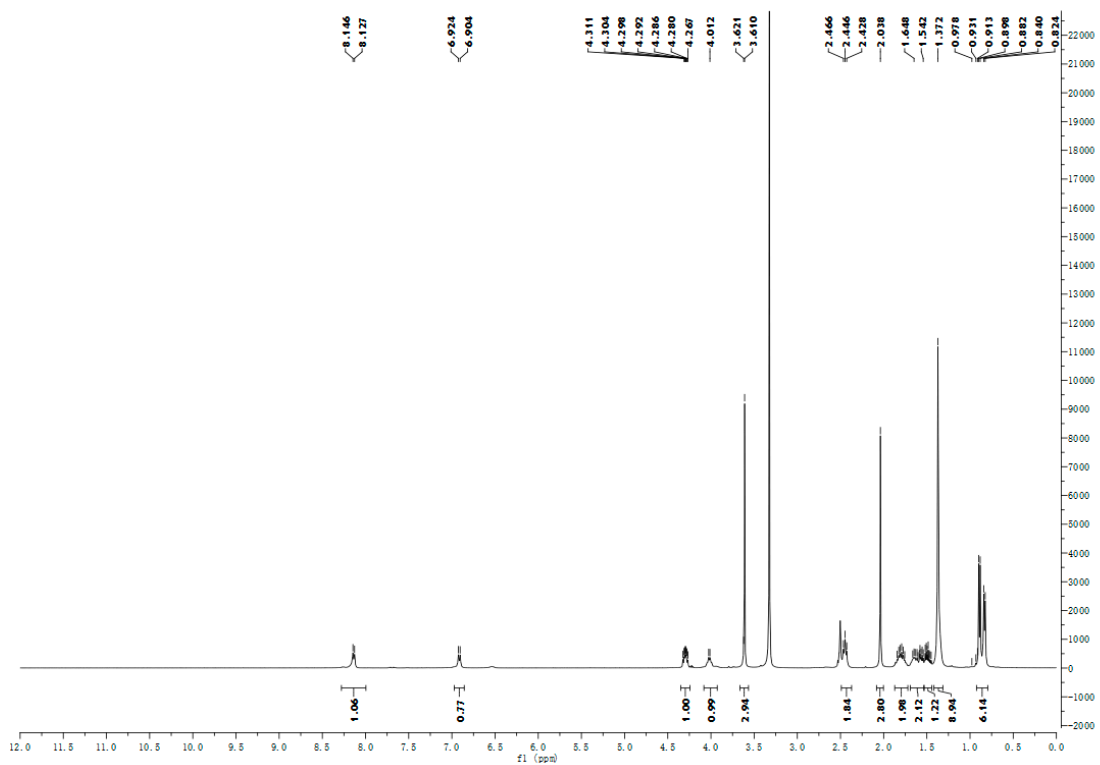


Figure S49. ¹H-NMR for compound Leu-05.

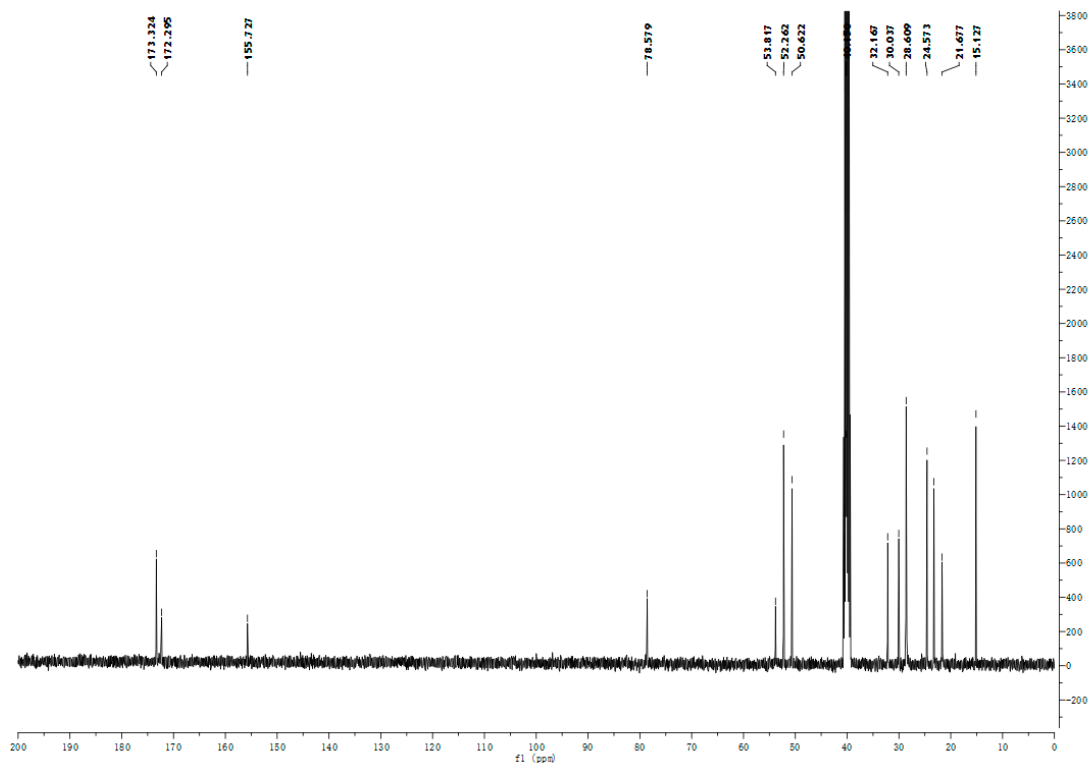


Figure S50. ^{13}C -NMR for compound Leu-05.

R.Time:0.242(Scan#:30)
 MassPeaks:552 BasePeak:399(2512602)
 Spectrum Mode:Single 0.242(30)
 BG Mode:Averaged 0.008-0.142(2-18) Polarity:Positive Segment 1 - Event 1

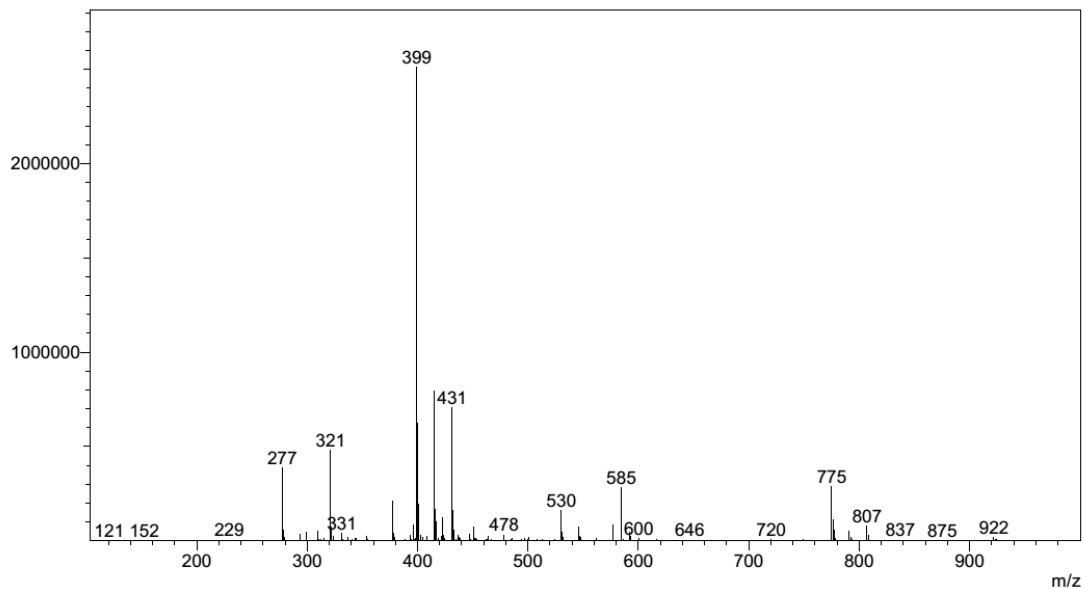


Figure S51. MS-ESI for compound Leu-05.

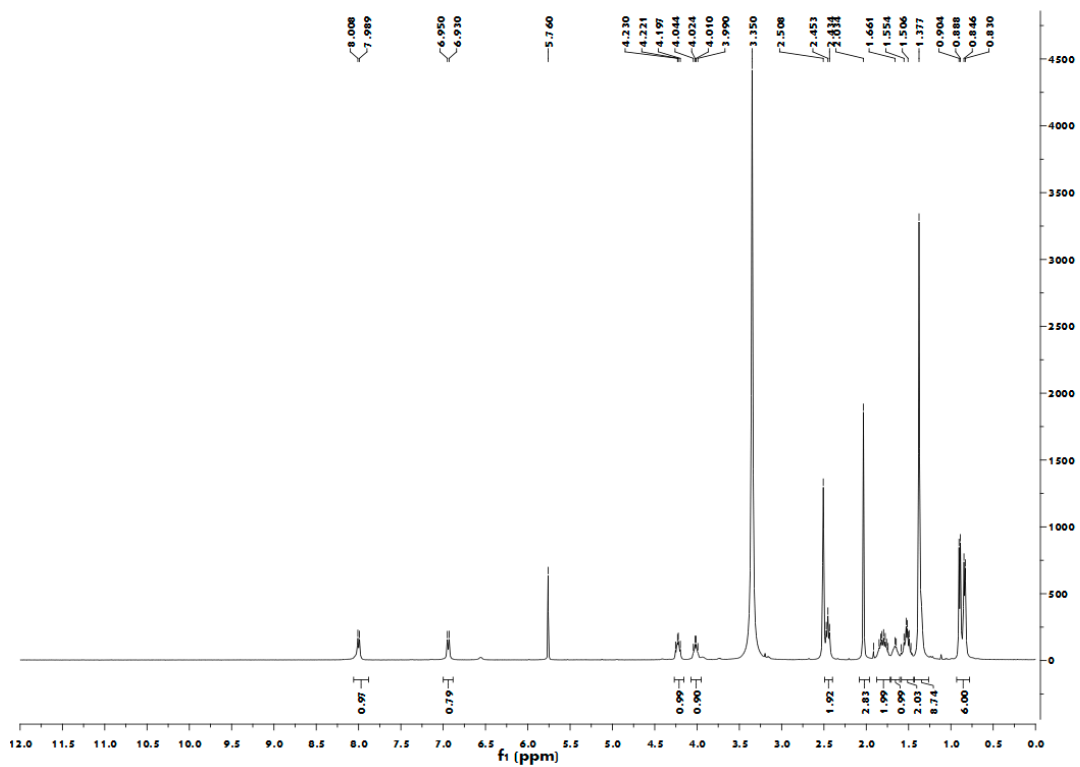


Figure S52. ¹H-NMR for compound Leu-06.

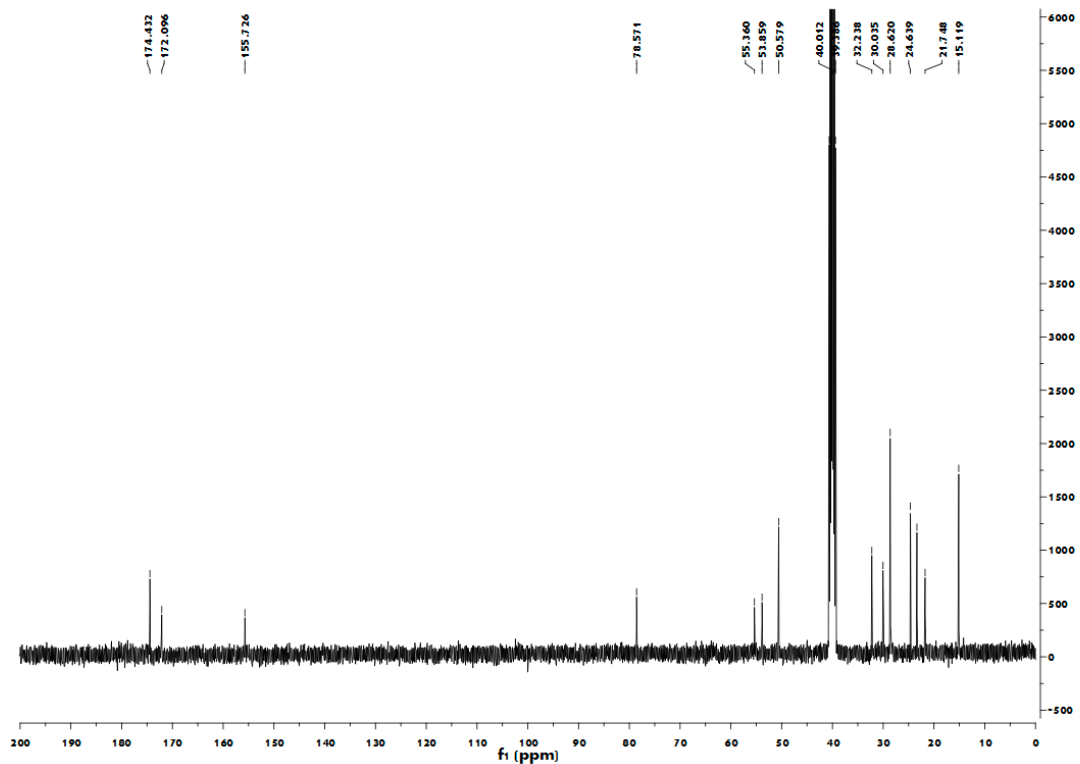


Figure S53. ¹³C-NMR for compound Leu-06.

R.Time:0.783(Scan#:95)
MassPeaks:915 BasePeak:361(230340)
Spectrum Mode:Single 0.783(95)
BG Mode:None Polarity:Negative Segment 1 - Event 1

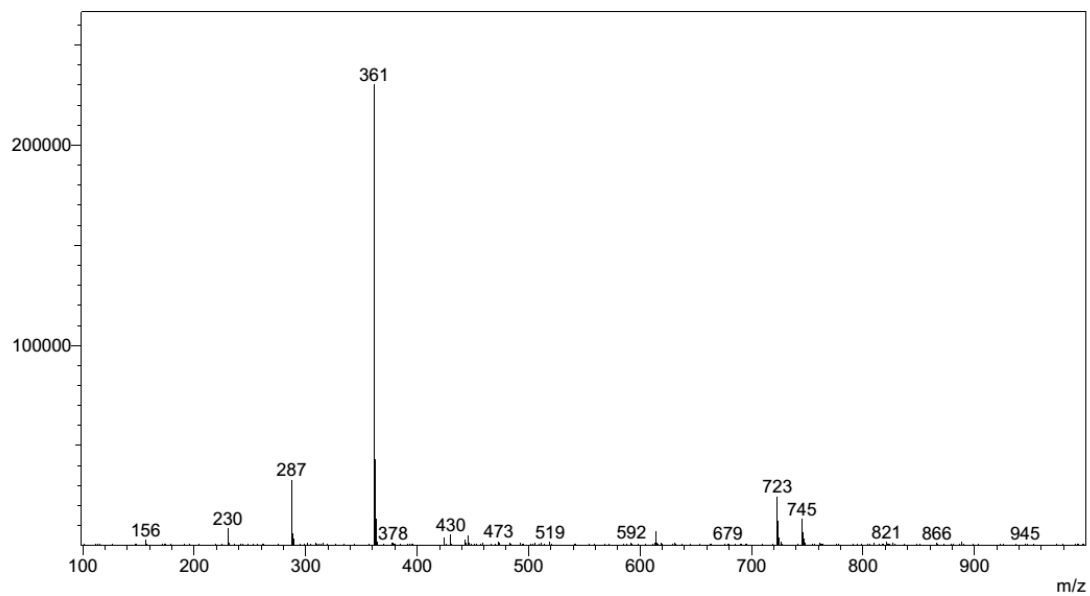


Figure S54. MS-ESI for compound Leu-06.

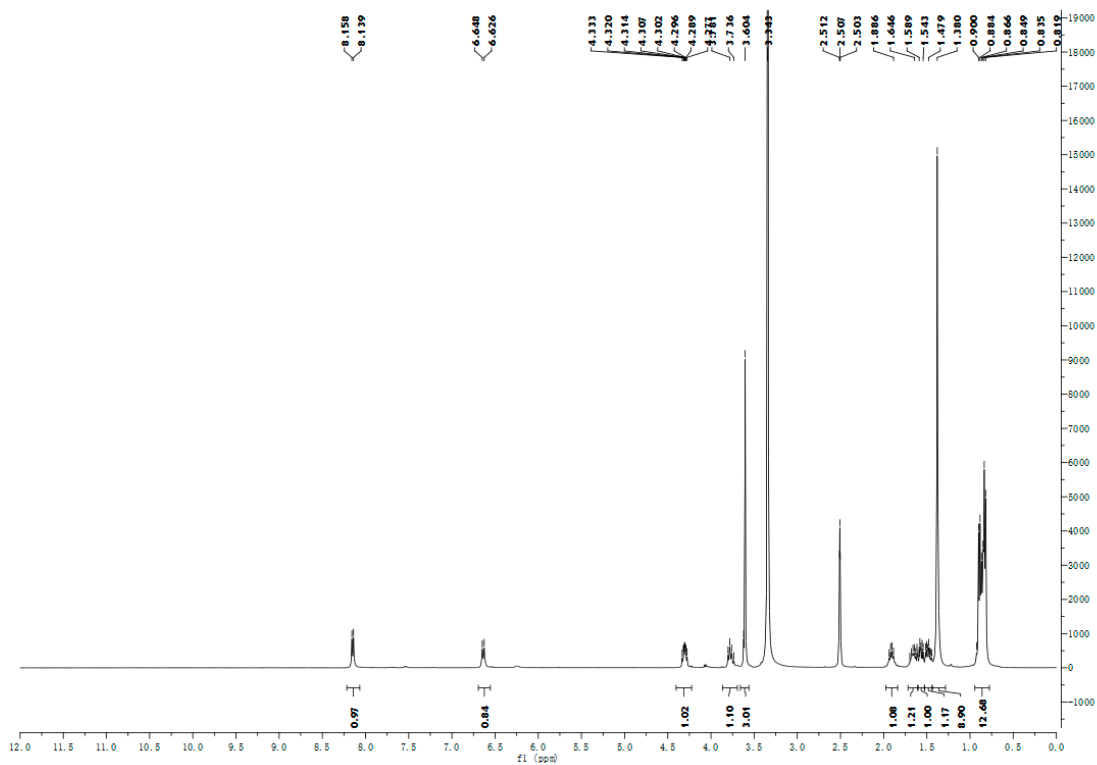


Figure S55. ¹H-NMR for compound Leu-07.

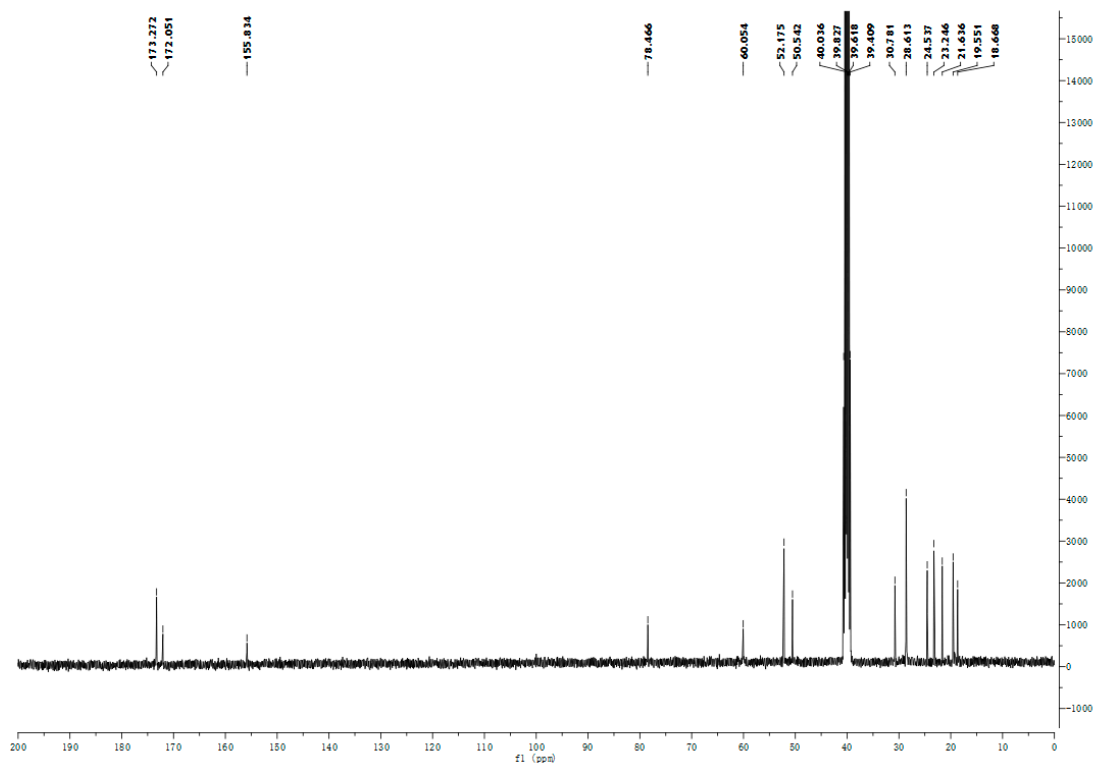


Figure S56. ^{13}C -NMR for compound Leu-07.

R.Time:0.225(Scan#:28)
 MassPeaks:944 BasePeak:367(3256550)
 Spectrum Mode:Single 0.225(28)
 BG Mode:None Polarity:Positive Segment 1 - Event 1

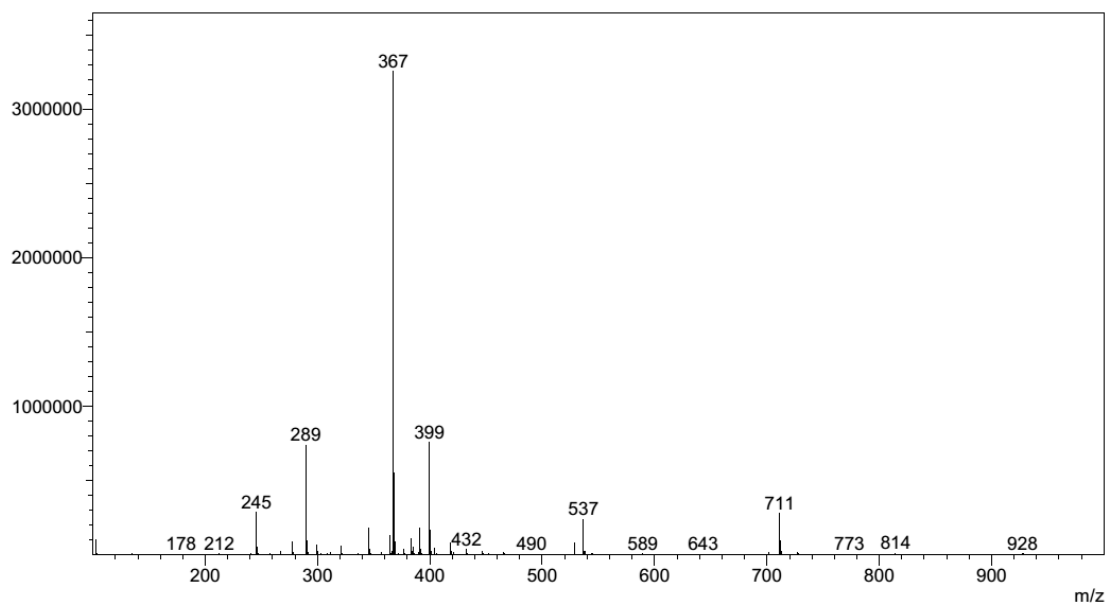


Figure S57. MS-ESI for compound Leu-07.

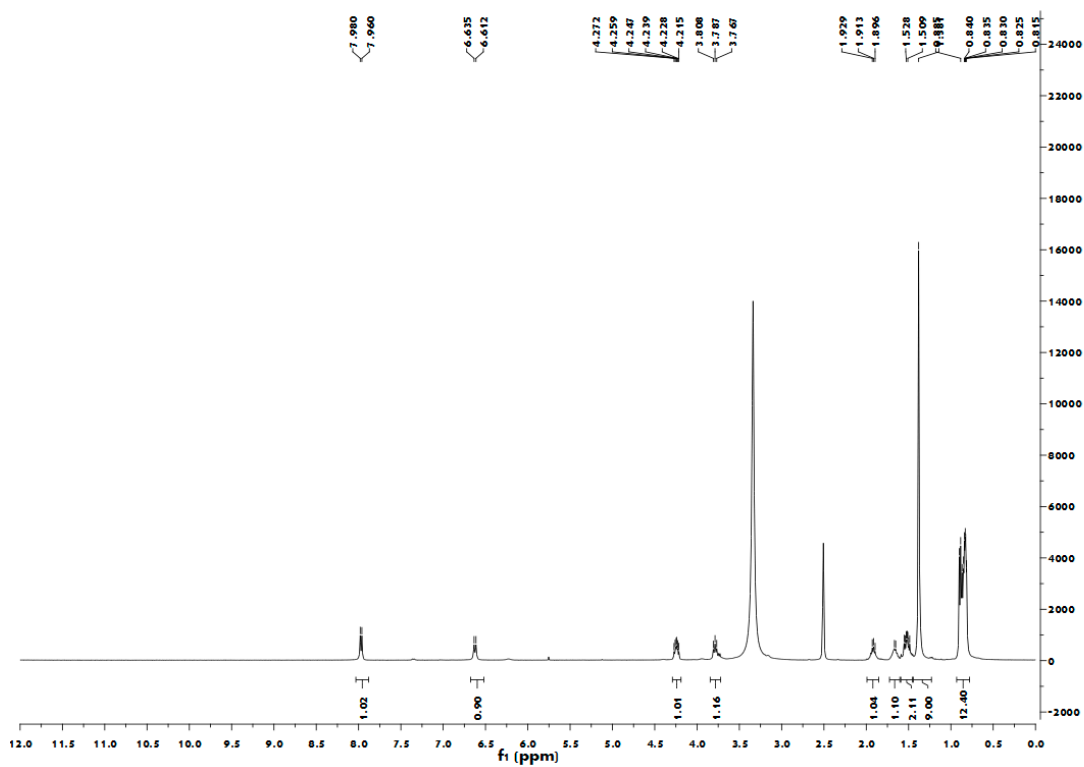


Figure S58. ¹H-NMR for compound Leu-08.

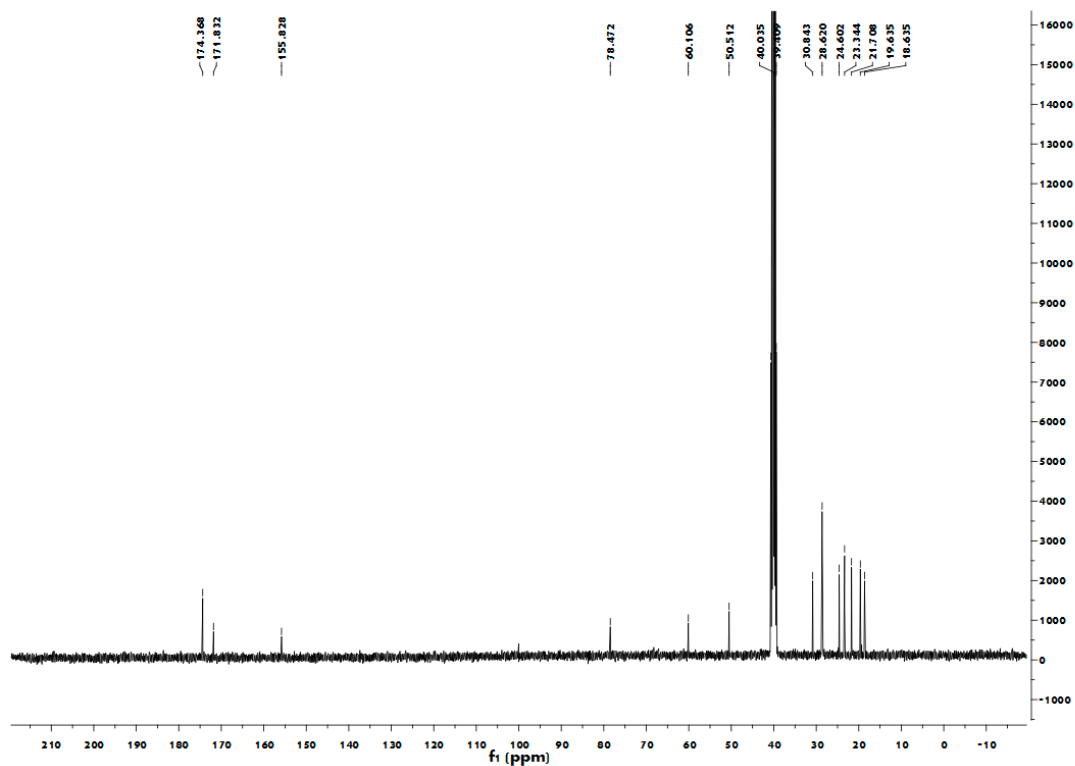


Figure S59. ¹³C-NMR for compound Leu-08.

R.Time:0.200(Scan#:25)
MassPeaks:939 BasePeak:329(1065062)
Spectrum Mode:Single 0.200(25)
BG Mode:None Polarity:Negative Segment 1 - Event 1

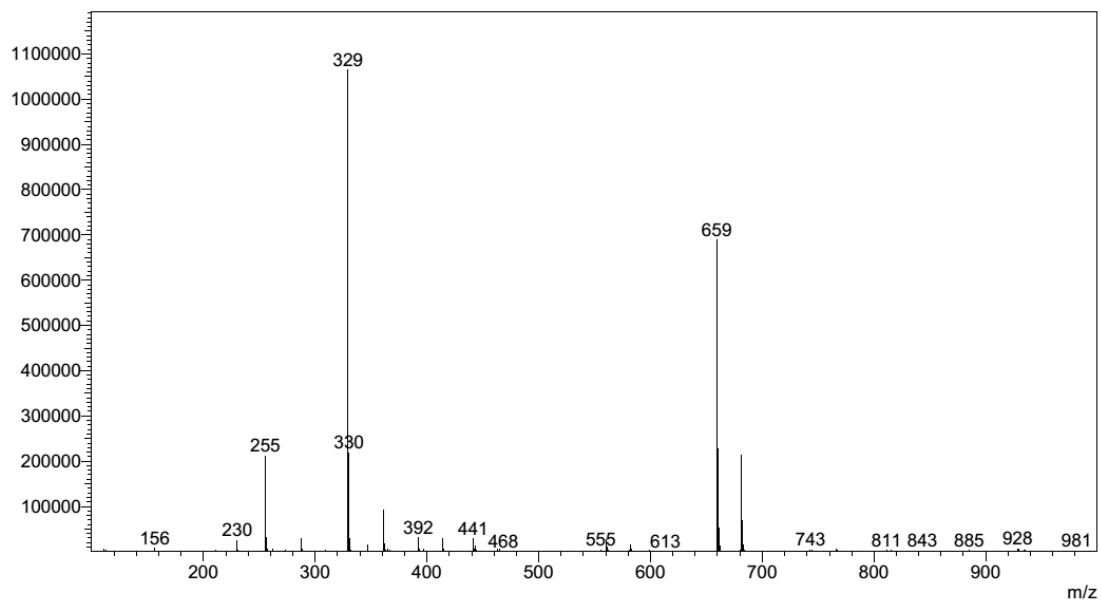


Figure S60. MS-ESI for compound Leu-08.

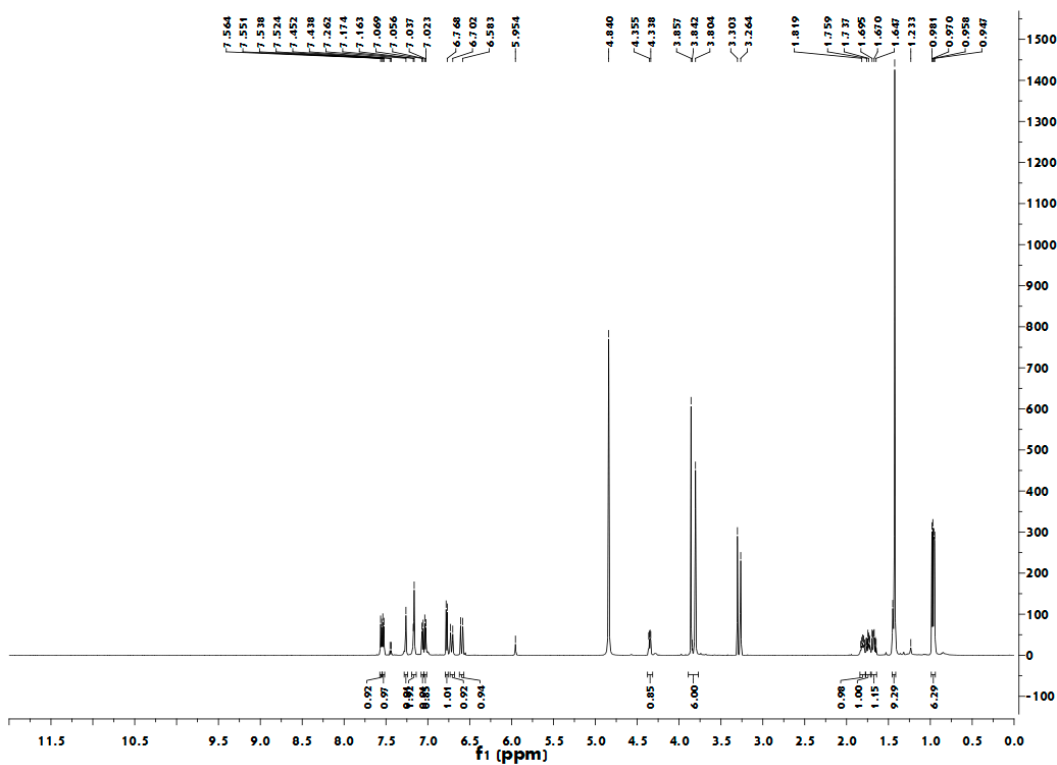


Figure S61. ¹H-NMR for compound 9.

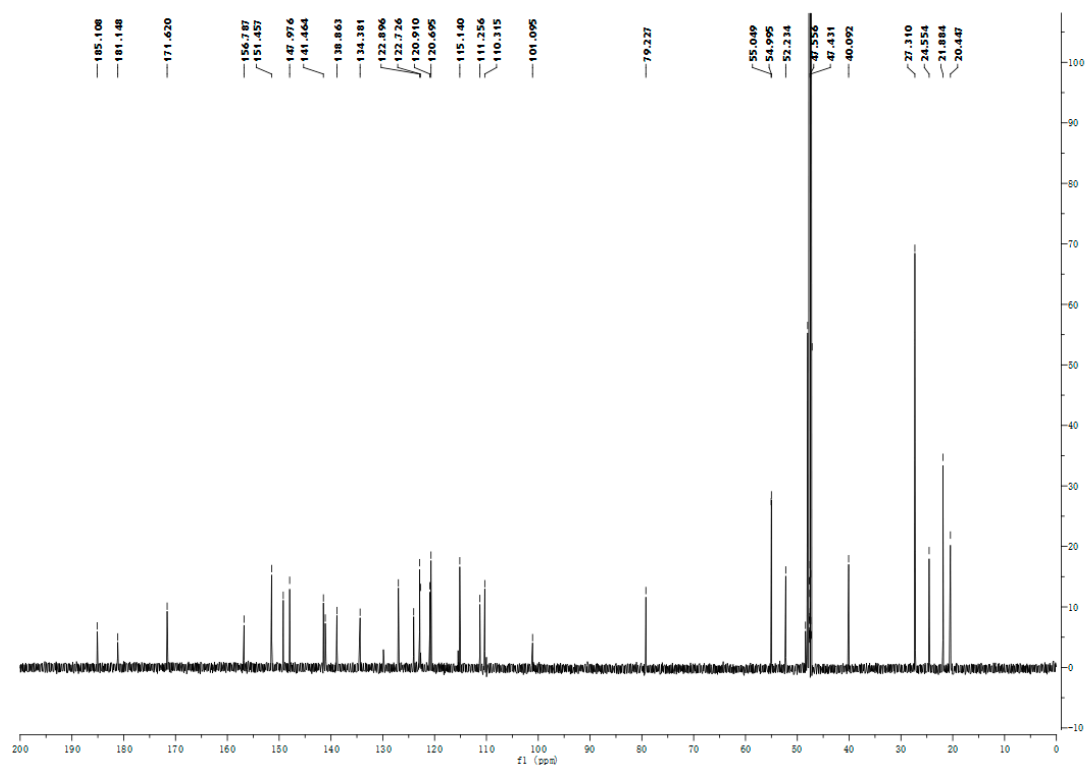


Figure S62. ^{13}C -NMR for compound 9.

R. Time: 0.375 (Scan#: 46)
 Mass Peaks: 502 Base Peak: 580 (48435)
 Spectrum Mode: Single 0.375 (46)
 BG Mode: Averaged 0.033-0.283 (5-35) Polarity: Negative Segment 1 - Event 1

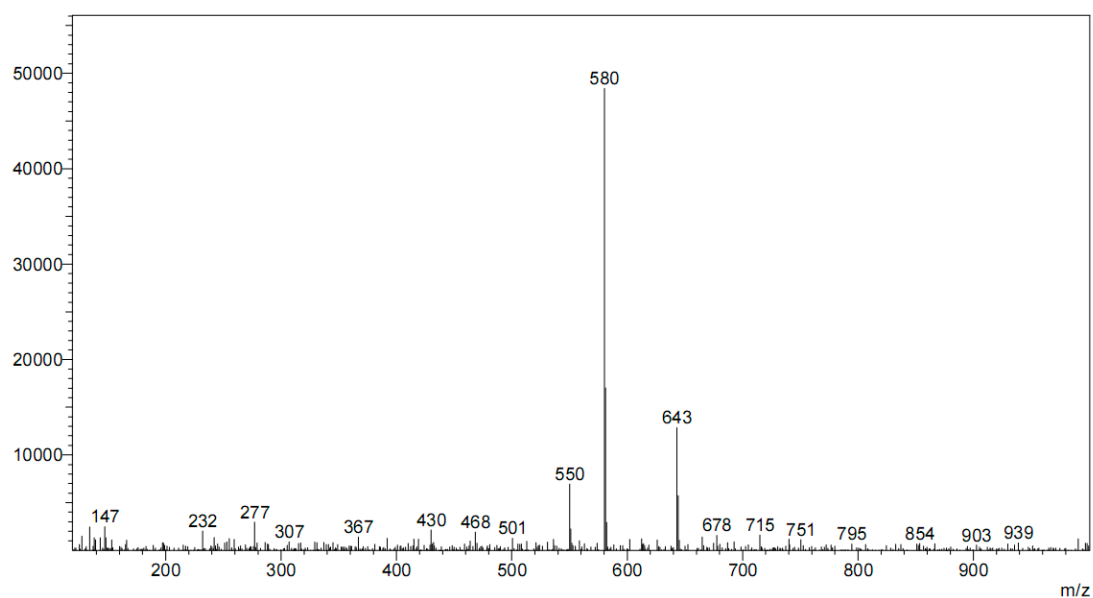


Figure S63. MS-ESI for compound 9.

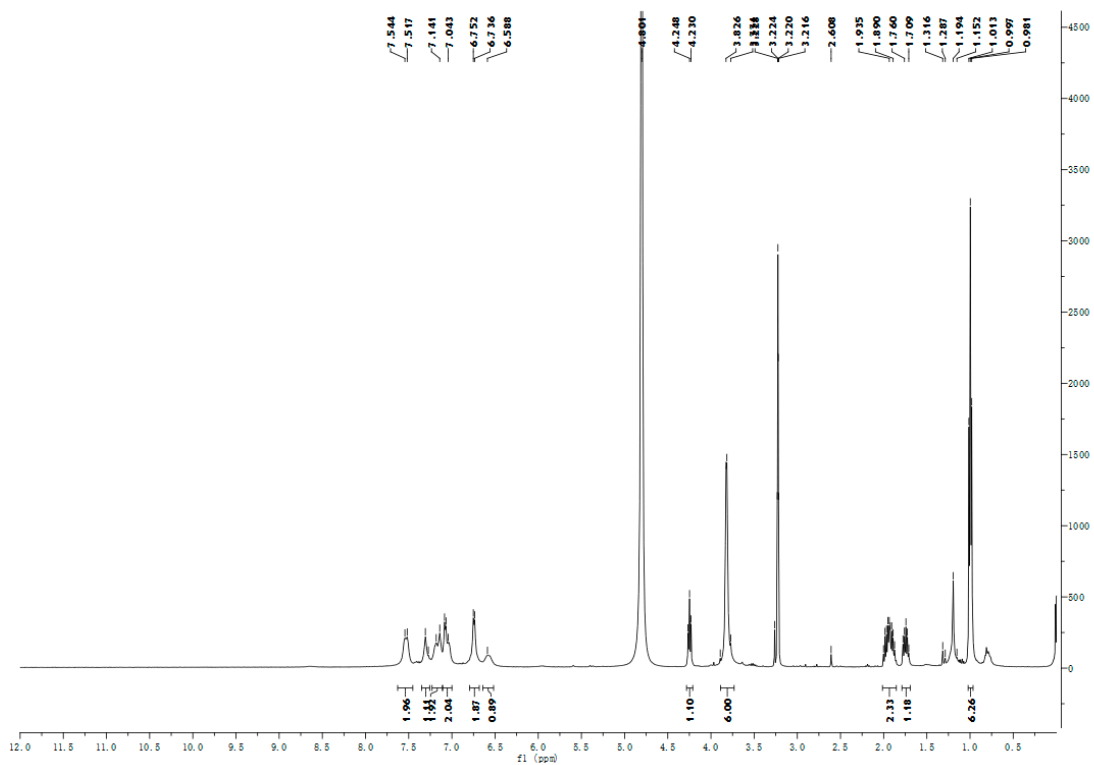


Figure S64. $^1\text{H-NMR}$ for compound 10.

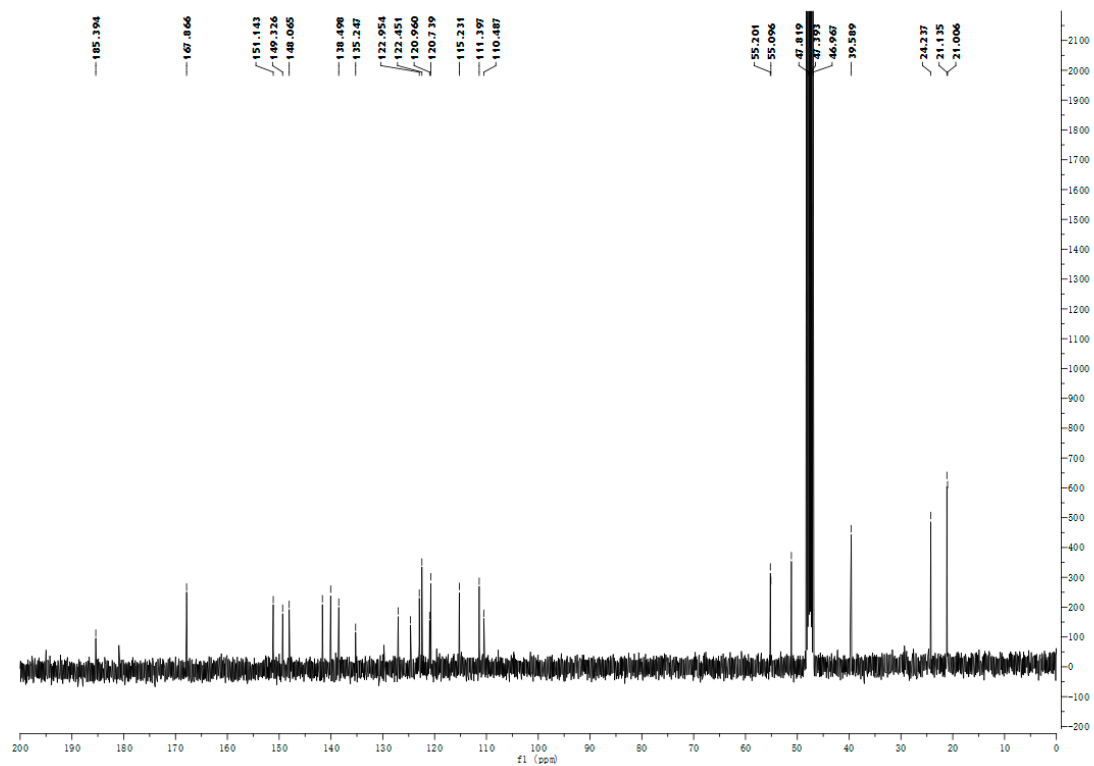


Figure S65. $^{13}\text{C-NMR}$ for compound 10.

R. Time: 0.175 (Scan#: 22)
Mass Peaks: 500 Base Peak: 480 (62993)
Spectrum Mode: Single 0.175 (22)
BG Mode: Averaged 0.242-0.617 (30-75) Polarity: Negative Segment 1 - Event 1

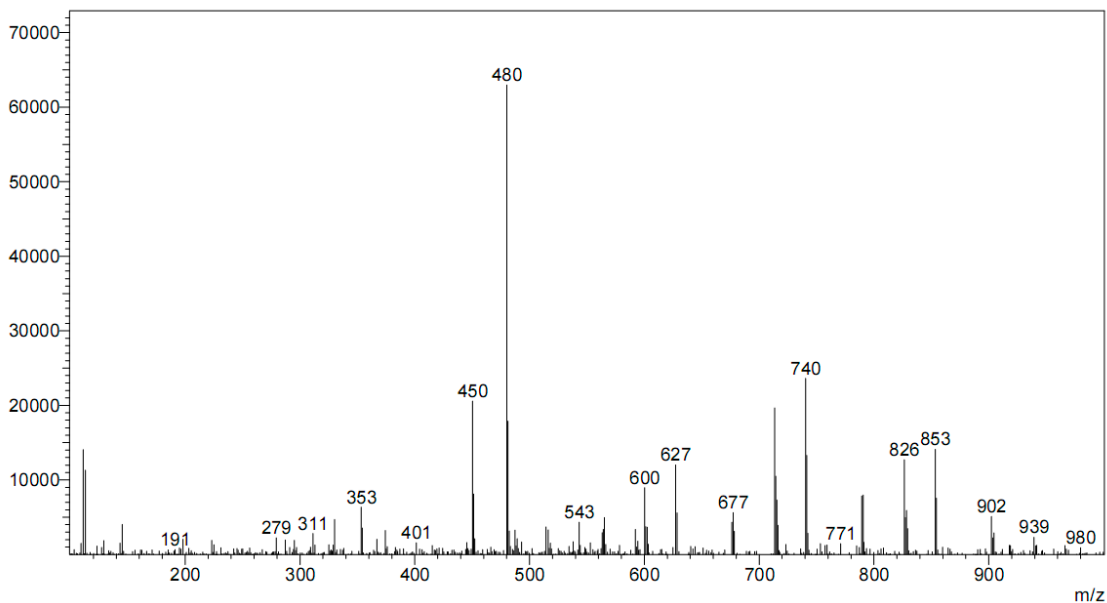


Figure S66. MS-ESI for compound 10.

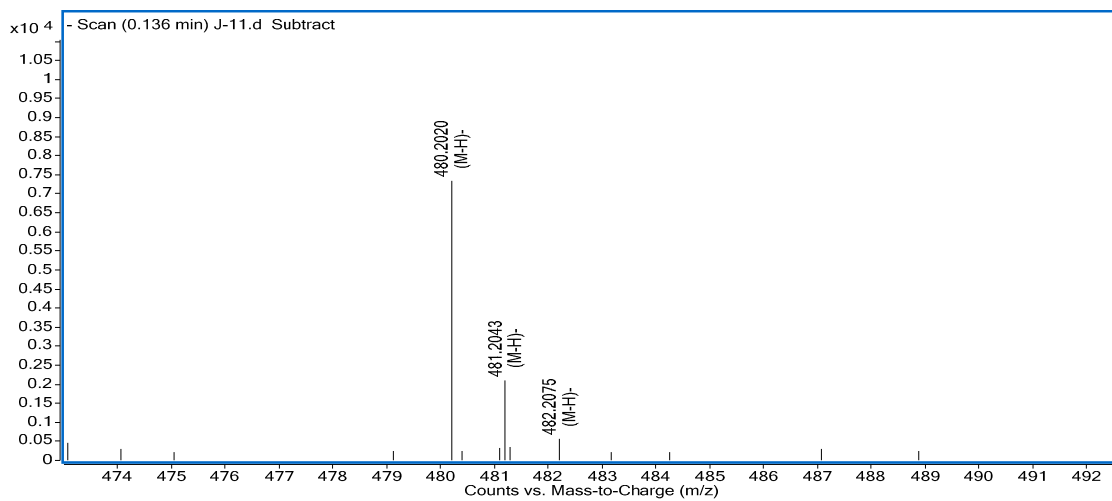


Figure S67. HRMS-ESI for compound 10.

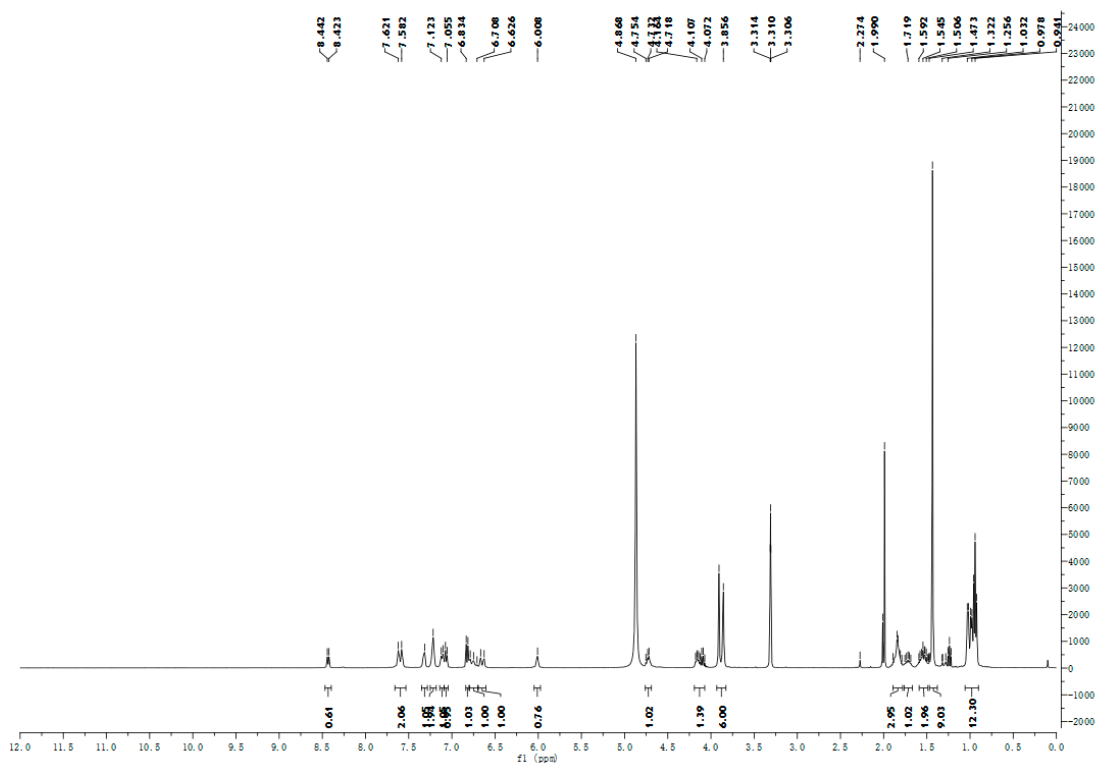


Figure S68. $^1\text{H-NMR}$ for compound 11.

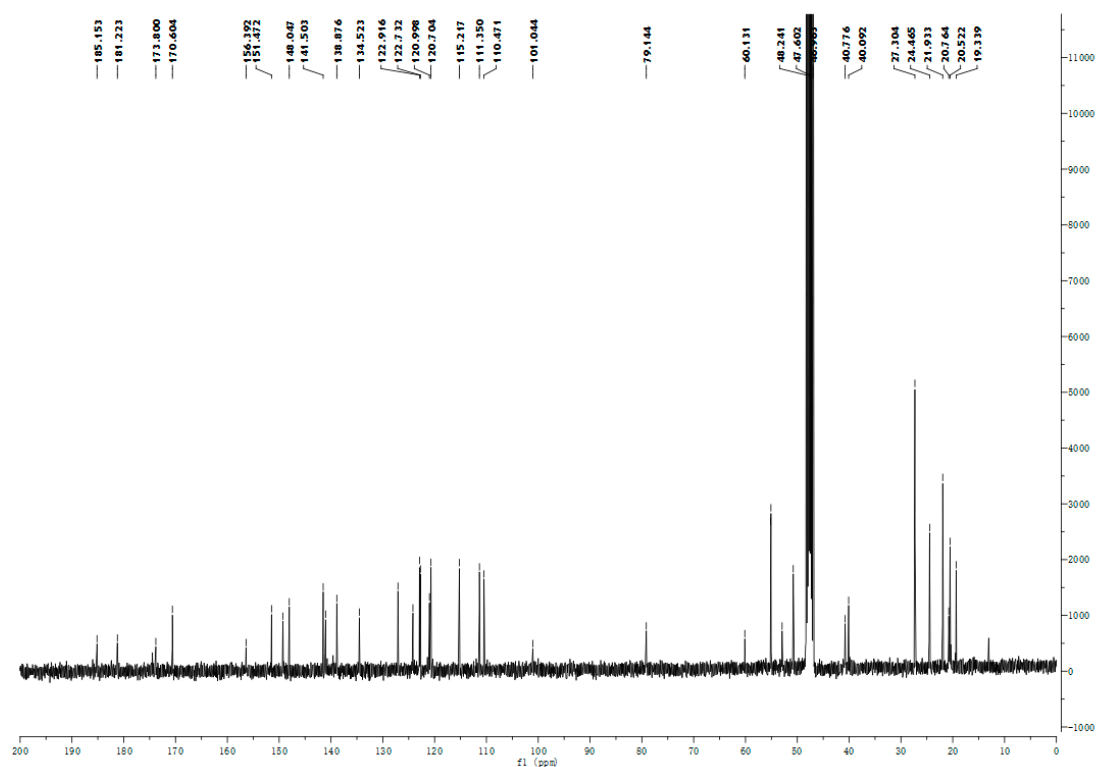


Figure S69. $^{13}\text{C-NMR}$ for compound 11.

R.Time:0.867(Scan#:105)
MassPeaks:663 BasePeak:756(79972)
Spectrum Mode:Single 0.867(105)
BG Mode:Averaged 0.008-0.700(2-85) Polarity:Negative Segment 1 - Event 1

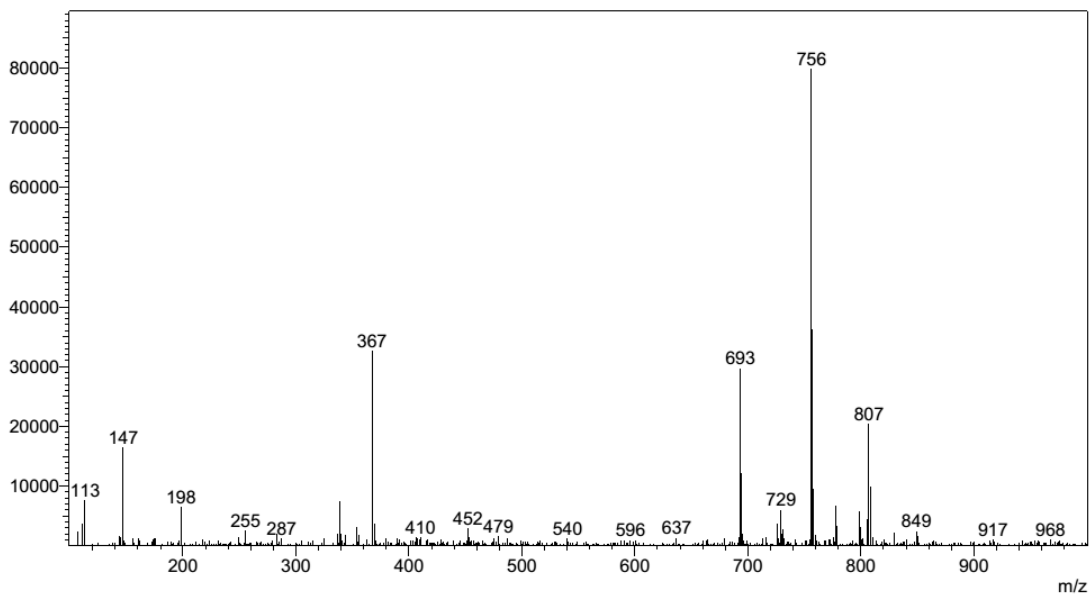


Figure S70. MS-ESI for compound 11.

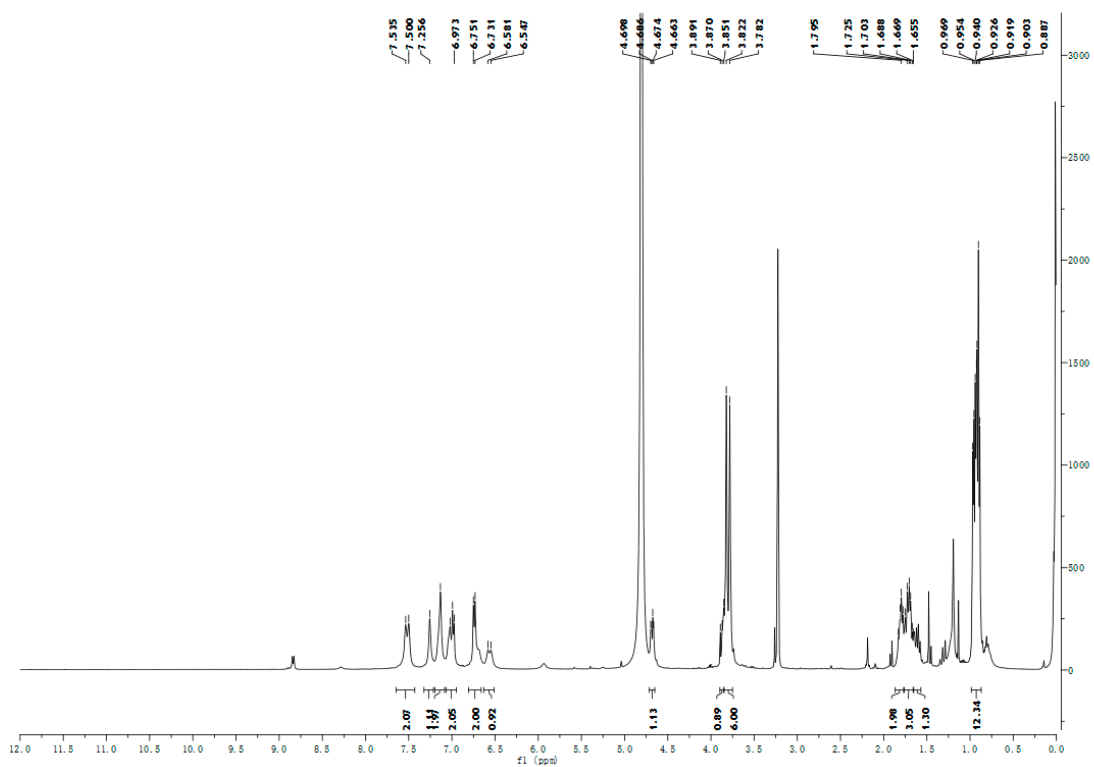


Figure S71. ¹H-NMR for compound 12.

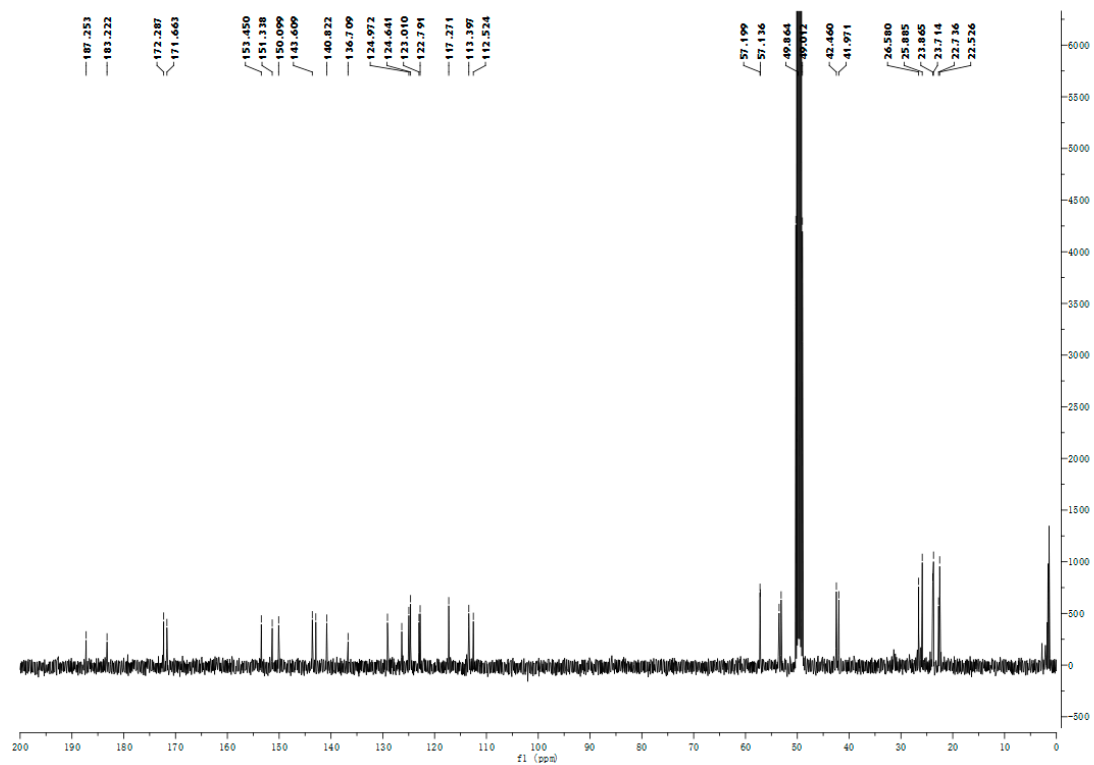


Figure S72. ¹³C-NMR for compound 12.

R.Time:0.900(Scan#:109)
 MassPeaks:635 BasePeak:595(359918)
 Spectrum Mode:Single 0.900(109)
 BG Mode:Averaged 0.025-0.700(4-85) Polarity:Positive Segment 1 - Event 1

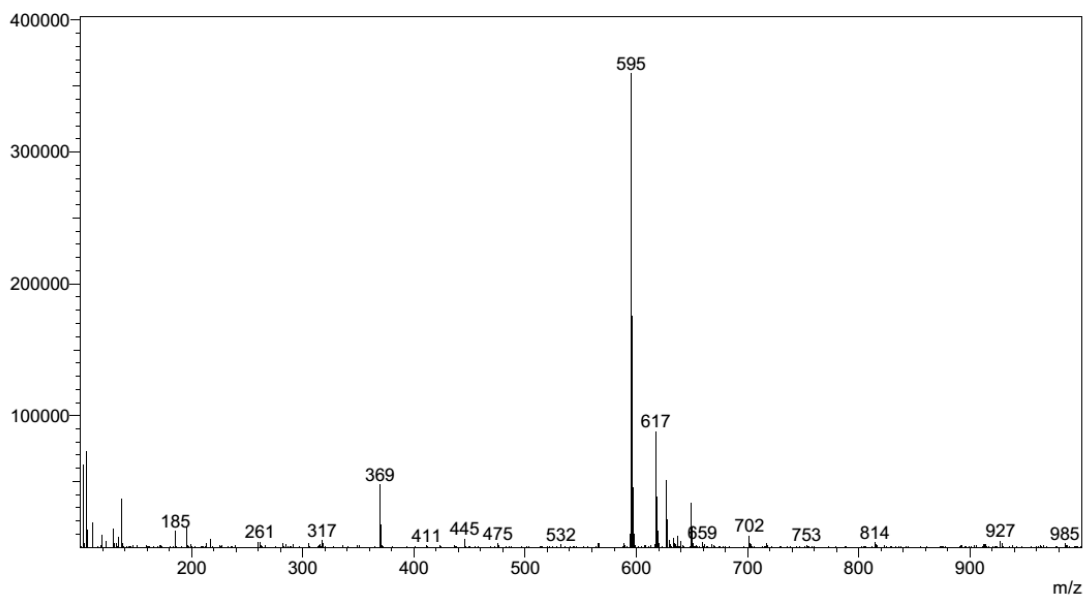


Figure S73. MS-ESI for compound 12.

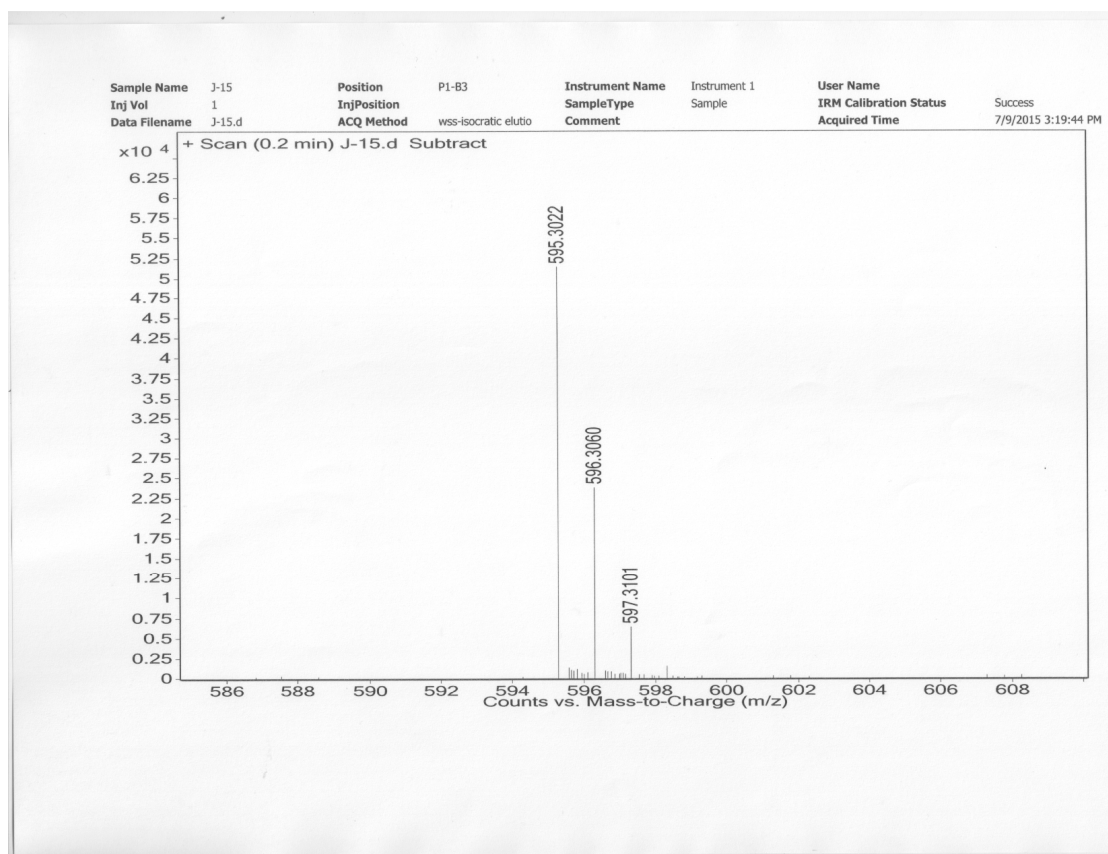


Figure S74. HRMS-ESI for compound 12.

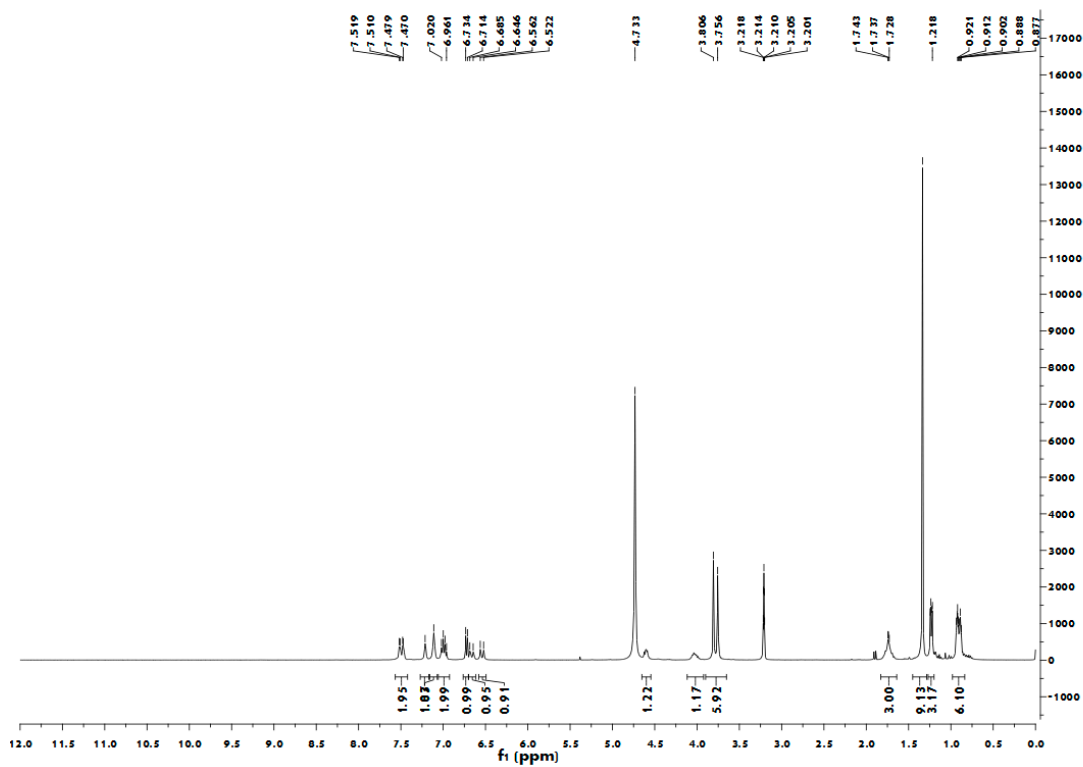


Figure S75. ¹H-NMR for compound 13.

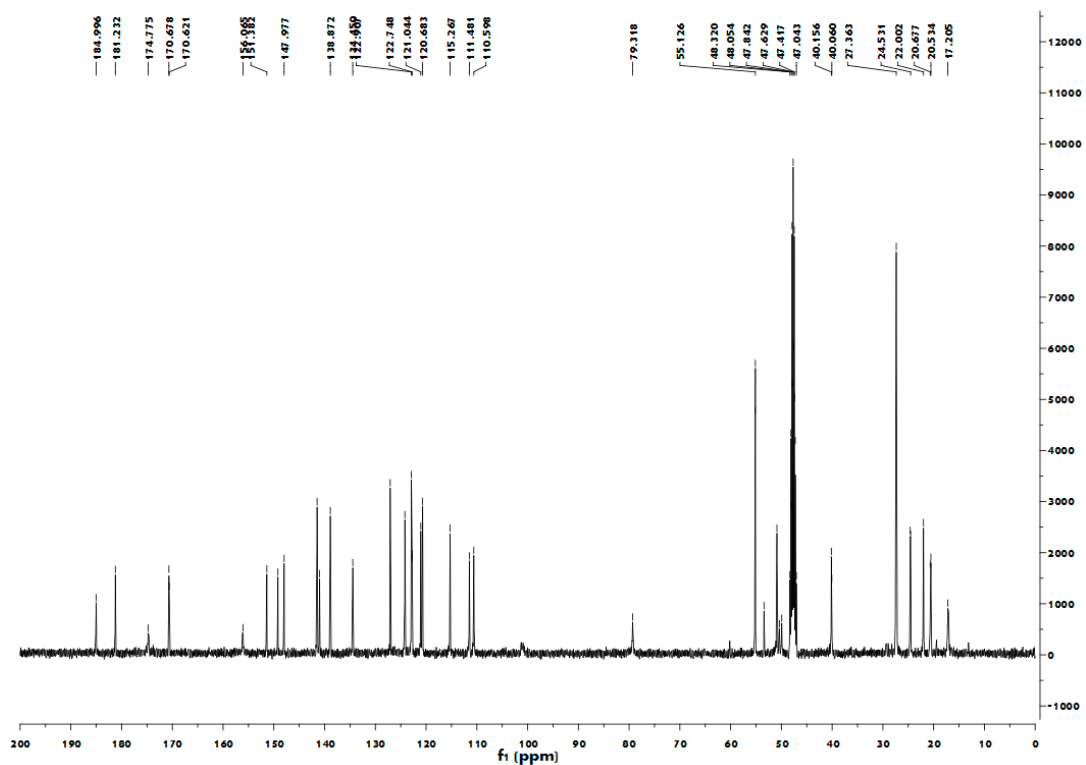


Figure S76. ¹³C-NMR for compound 13.

R.Time:0.292(Scan#:36)
 MassPeaks:467 BasePeak:367(31008)
 Spectrum Mode:Single 0.292(36)
 BG Mode:Averaged 0.008-0.150(2-19) Polarity:Negative Segment 1 - Event 1

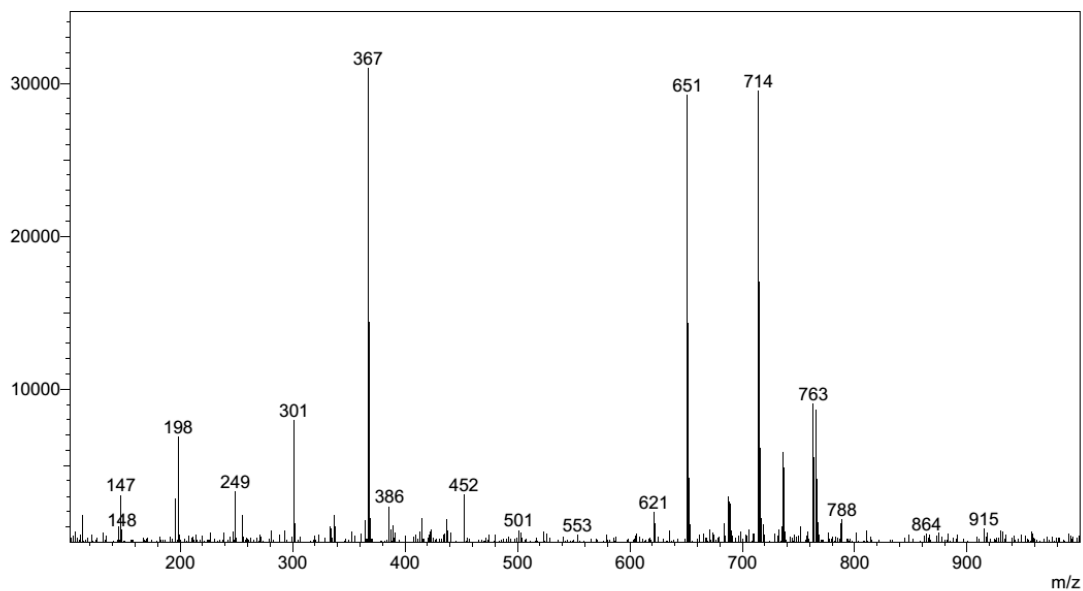


Figure S77. MS-ESI for compound 13.

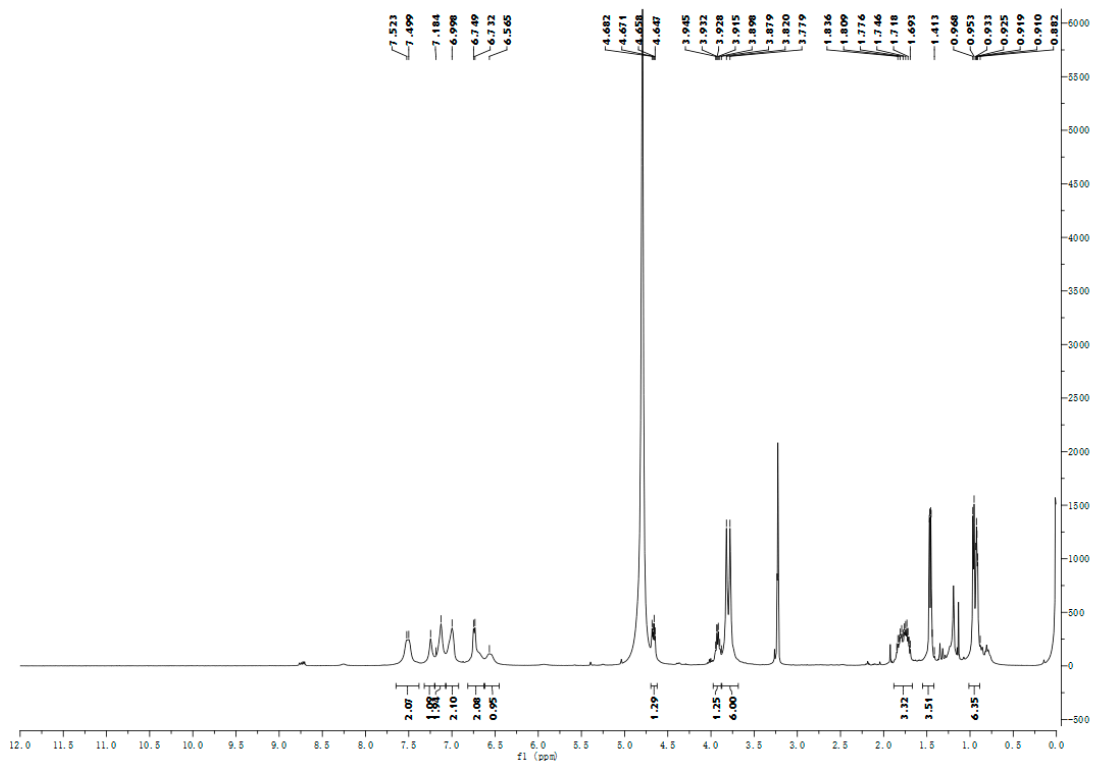


Figure S78. $^1\text{H-NMR}$ for compound 14.

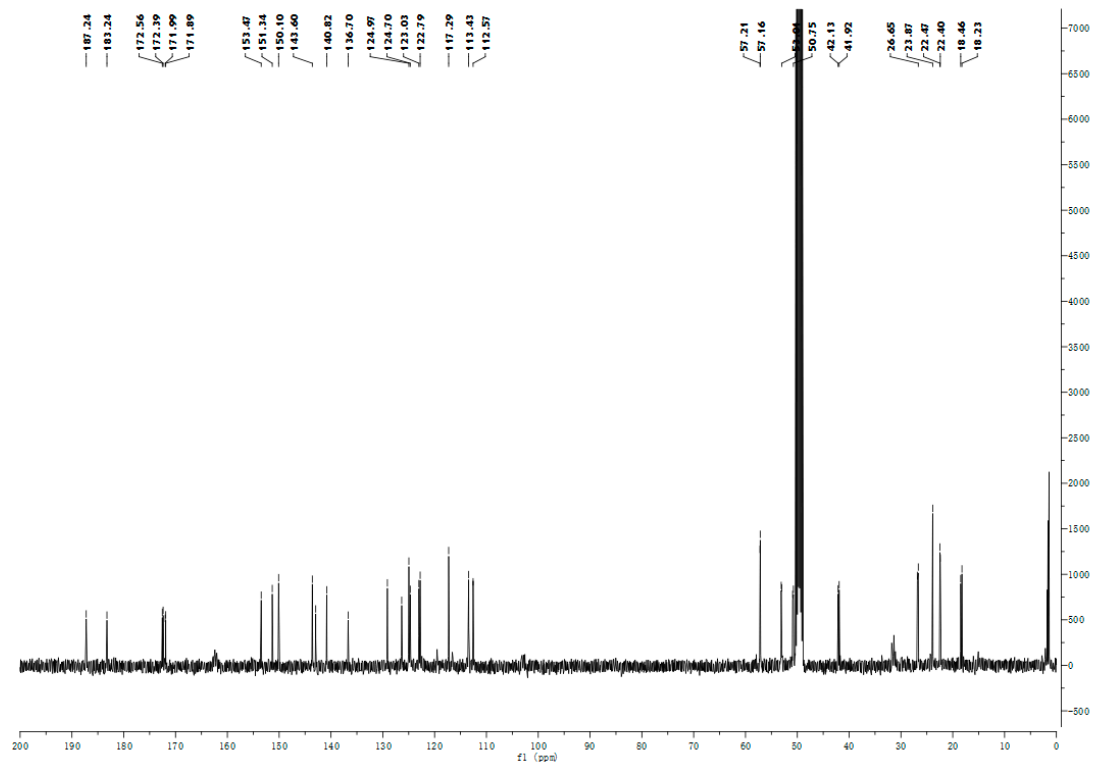


Figure S79. $^{13}\text{C-NMR}$ for compound 14.

R.Time:0.250(Scan#:31)
MassPeaks:360 BasePeak:553(342596)
Spectrum Mode:Single 0.250(31)
BG Mode:Averaged 0.008-0.183(2-23) Polarity:Positive Segment 1 - Event 1

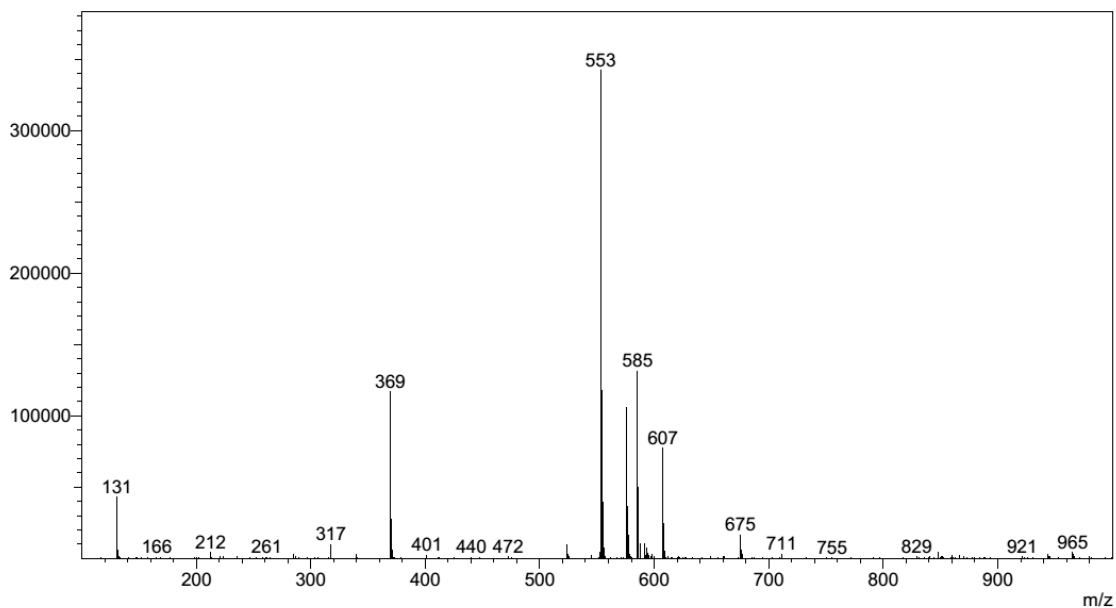


Figure S80. MS-ESI for compound 14.

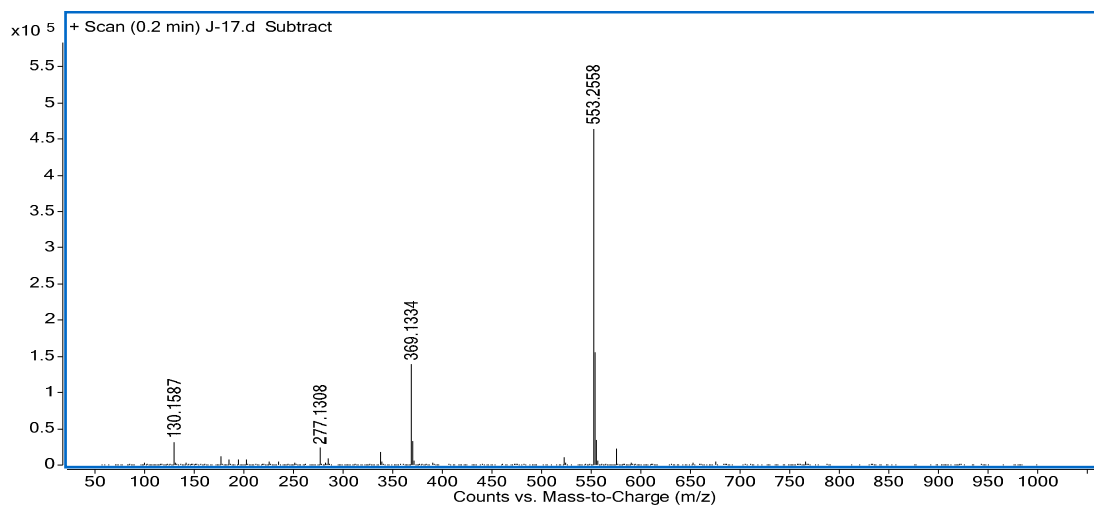


Figure S81. HRMS-ESI for compound 14.

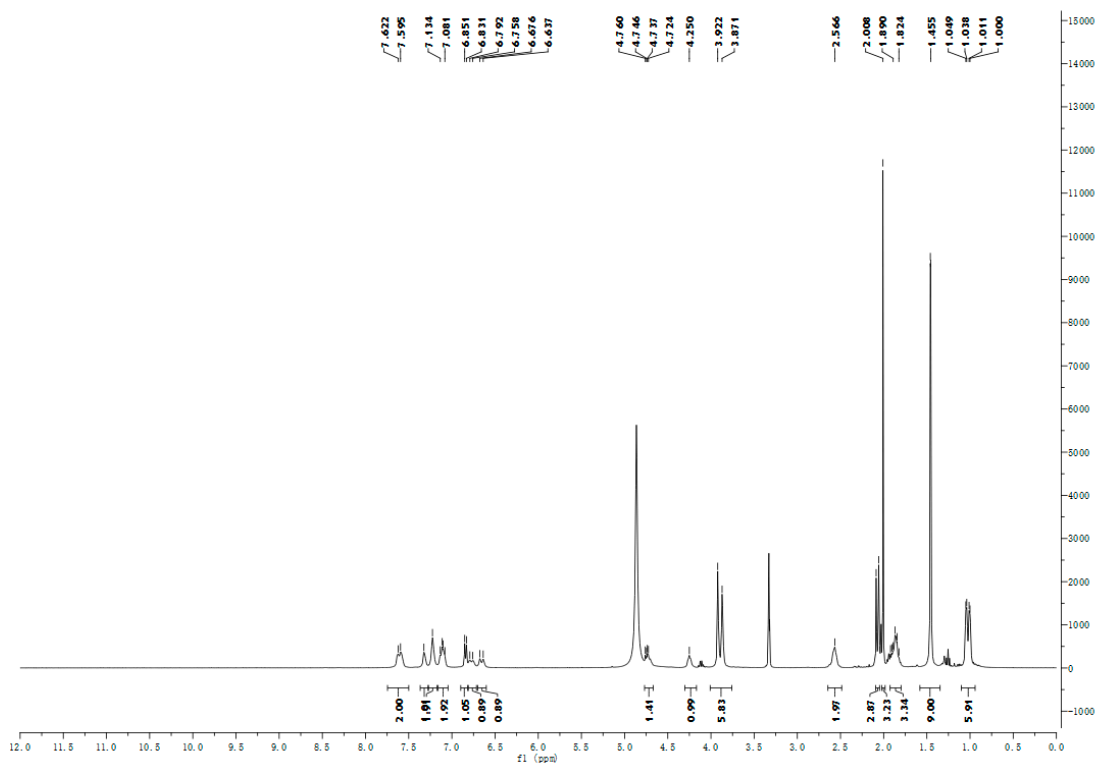


Figure S82. $^1\text{H-NMR}$ for compound 15.

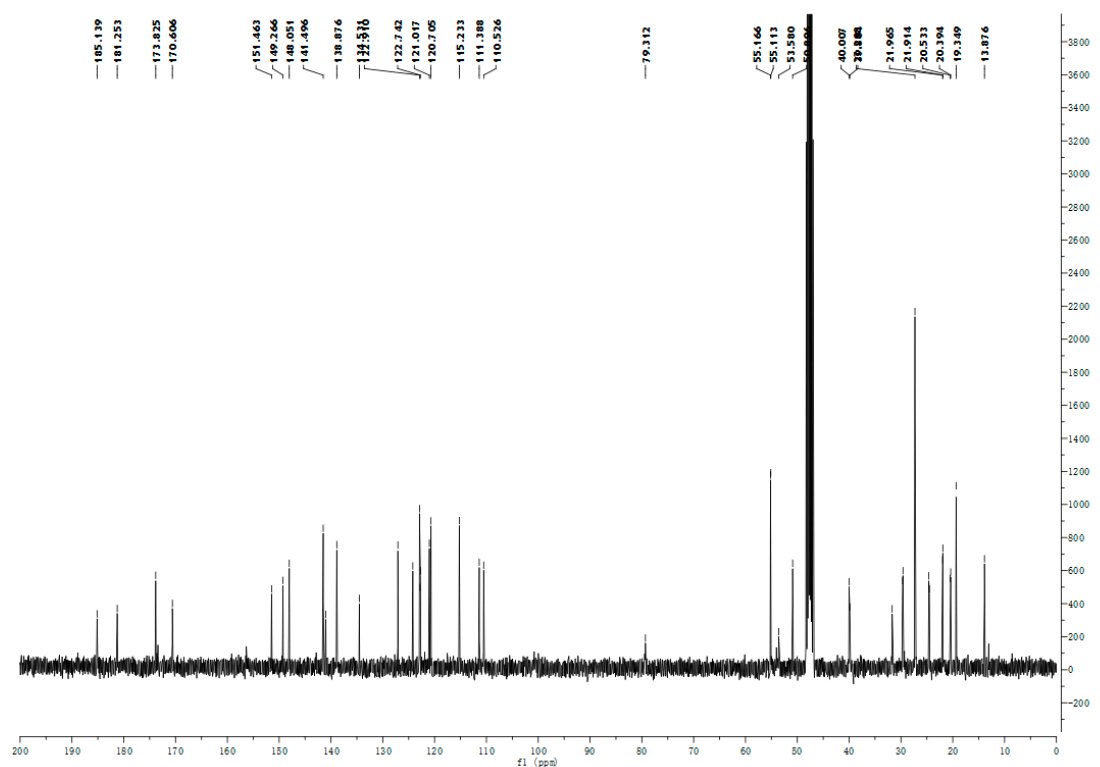


Figure S83. $^{13}\text{C-NMR}$ for compound 15.

R.Time:0.250(Scan#:31)
MassPeaks:435 BasePeak:774(154268)
Spectrum Mode:Single 0.250(31)
BG Mode:Averaged 0.008-0.158(2-20) Polarity:Negative Segment 1 - Event 1

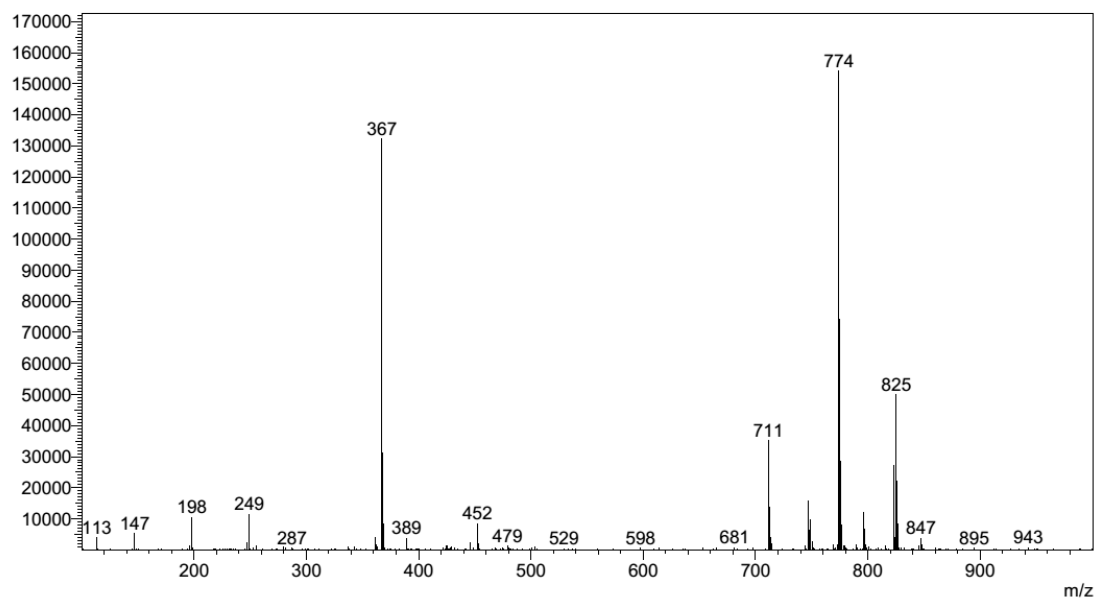


Figure S84. MS-ESI for compound 15.

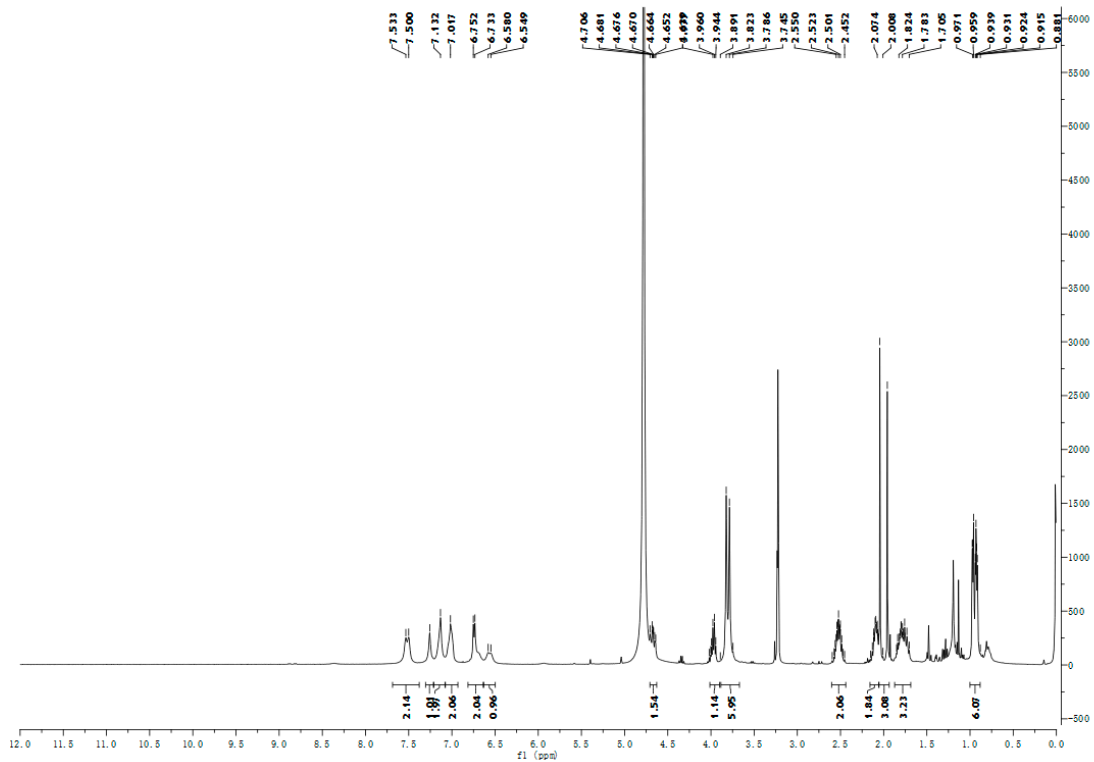


Figure S85. ¹H-NMR for compound 16.

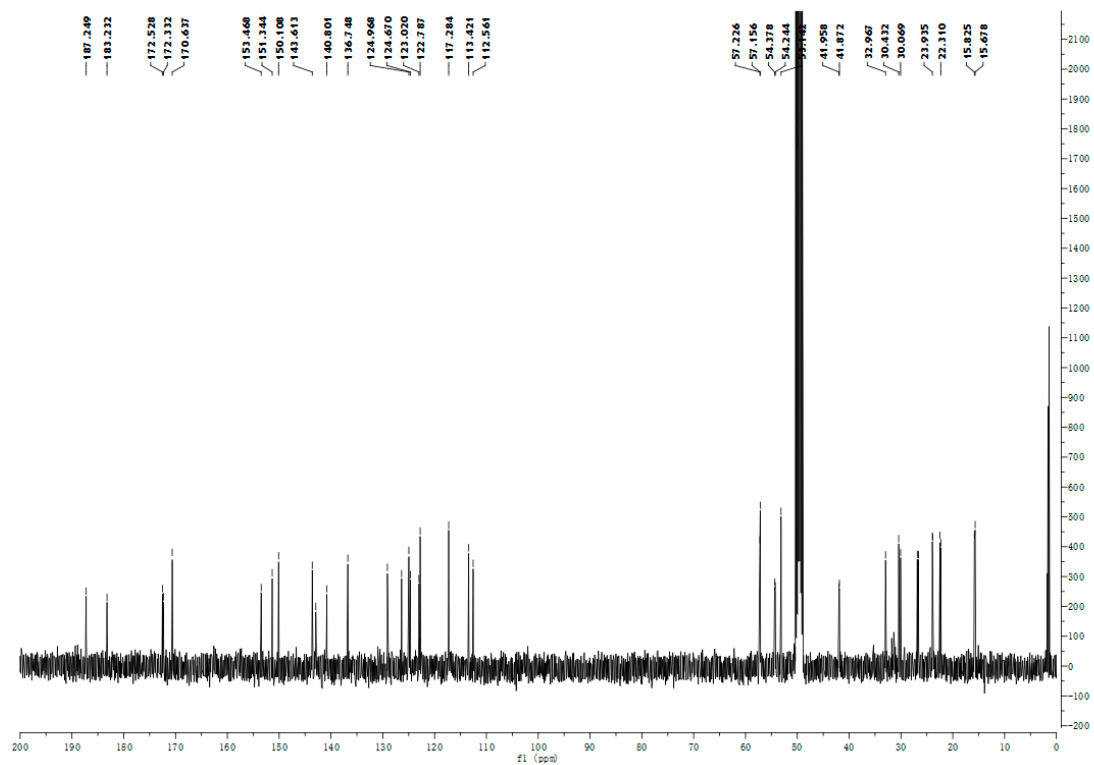


Figure S86. ^{13}C -NMR for compound 16.

R.Time:0.292(Scan#:36)
 MassPeaks:341 BasePeak:613(459275)
 Spectrum Mode:Single 0.292(36)
 BG Mode:Averaged 0.008-0.083(2-11) Polarity:Positive Segment 1 - Event 1

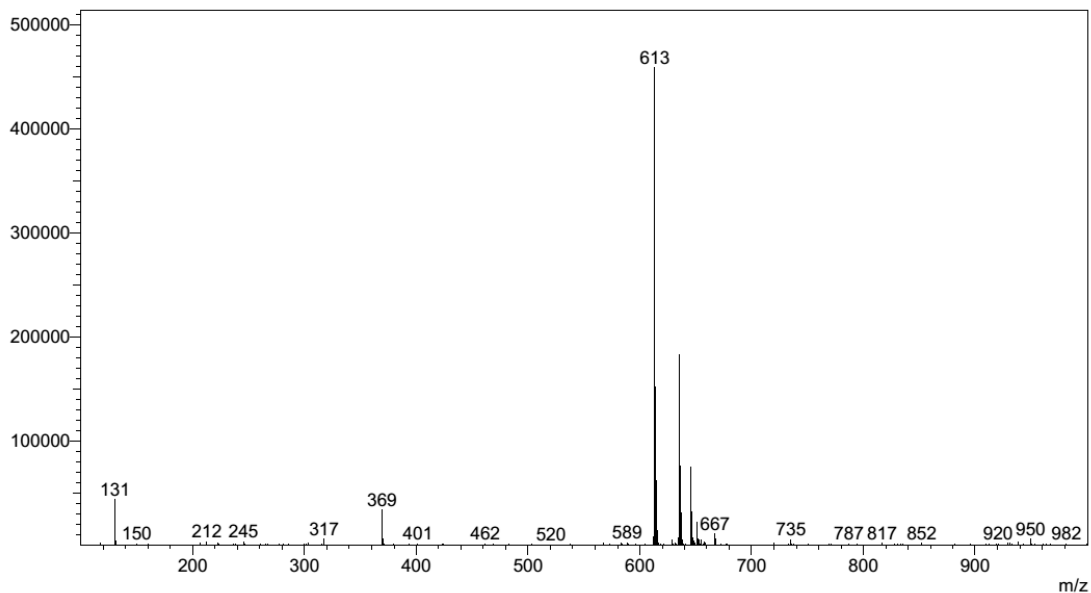


Figure S87. MS-ESI for compound 16.

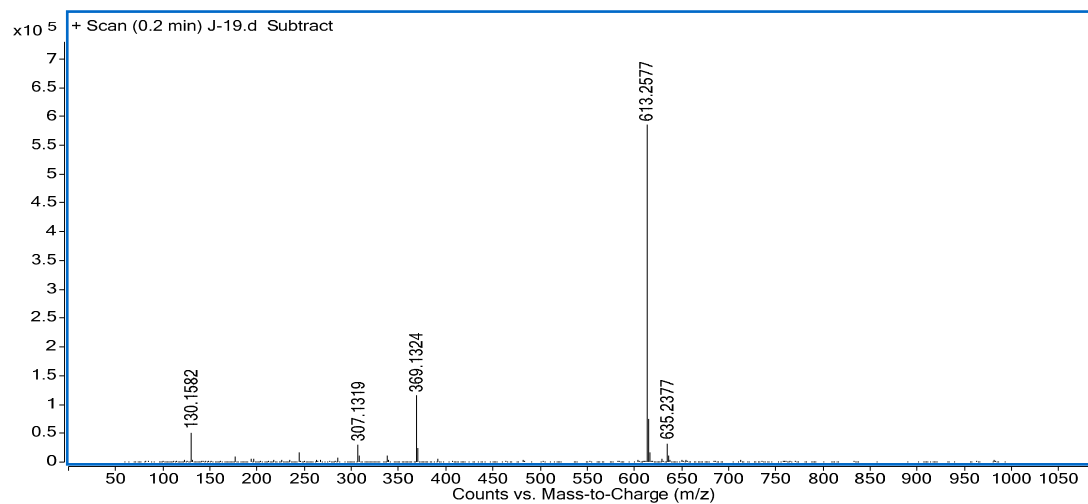


Figure S88. HRMS-ESI for compound 16.

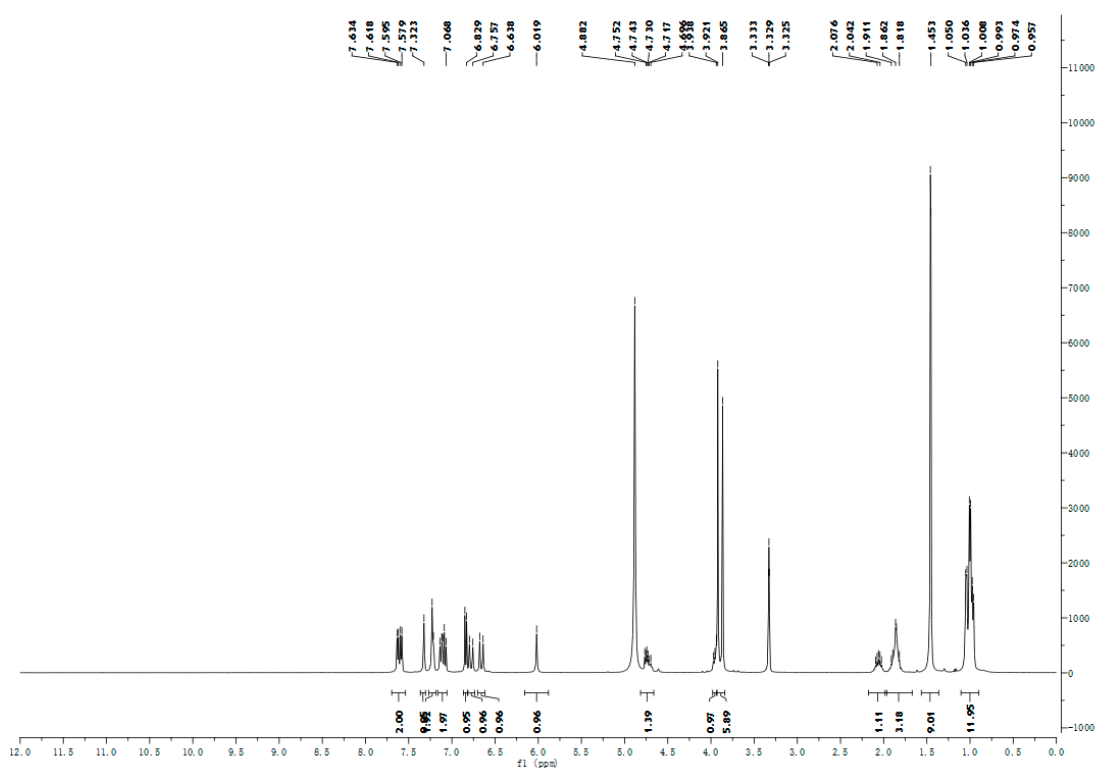


Figure S89. ¹H-NMR for compound 17.

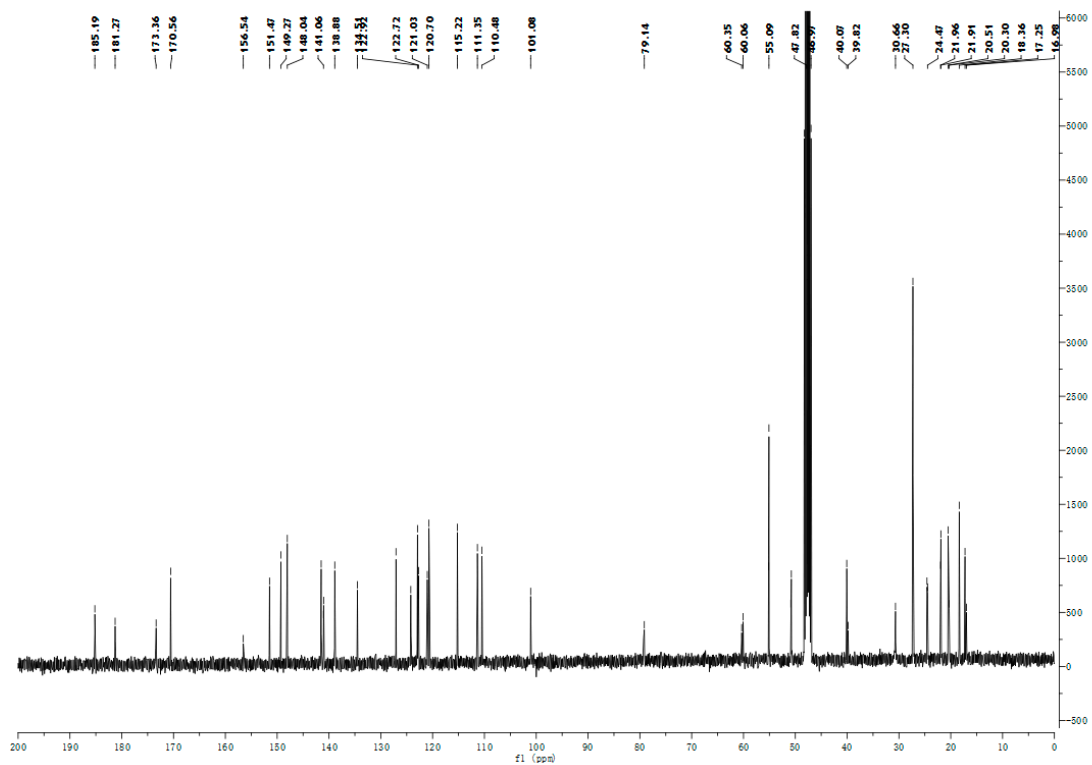


Figure S90. ^{13}C -NMR for compound 17.

R. Time: 0.367 (Scan#: 45)
 Mass Peaks: 435 Base Peak: 742 (41032)
 Spectrum Mode: Single 0.367 (45)
 BG Mode: Averaged 0.708-1.092 (86-132) Polarity: Negative Segment 1 - Event 1

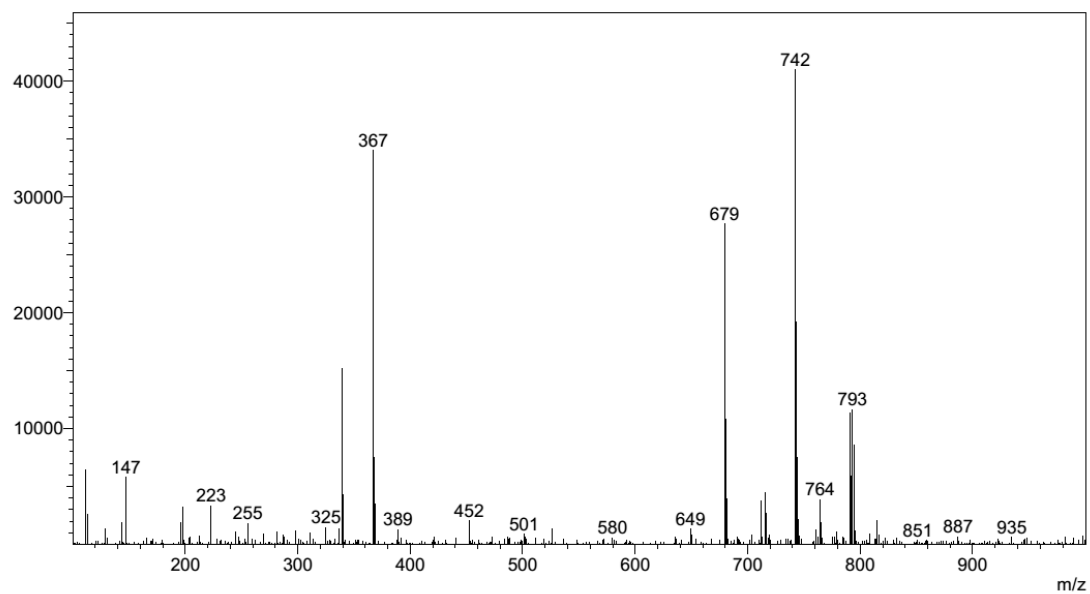


Figure S91. MS-ESI for compound 17.

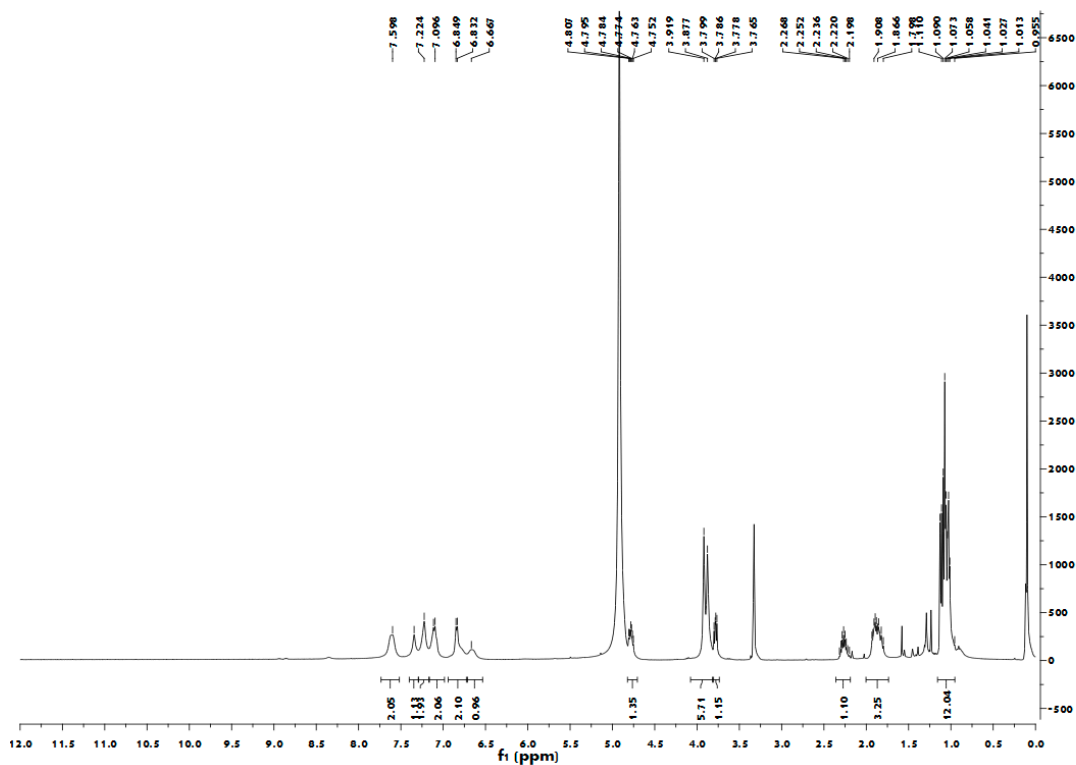


Figure S92. $^1\text{H-NMR}$ for compound 18.

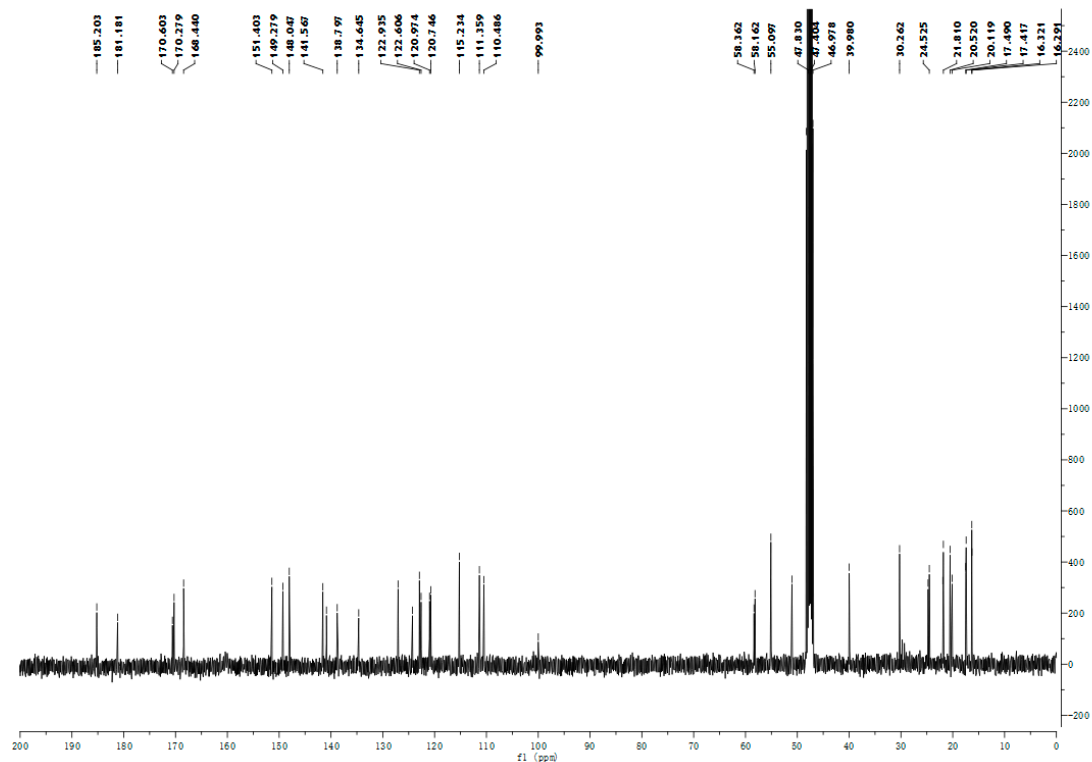


Figure S93. $^{13}\text{C-NMR}$ for compound 18.

R.Time:0.267(Scan#:33)
MassPeaks:337 BasePeak:581(578553)
Spectrum Mode:Single 0.267(33)
BG Mode:Averaged 0.008-0.142(2-18) Polarity:Positive Segment 1 - Event 1

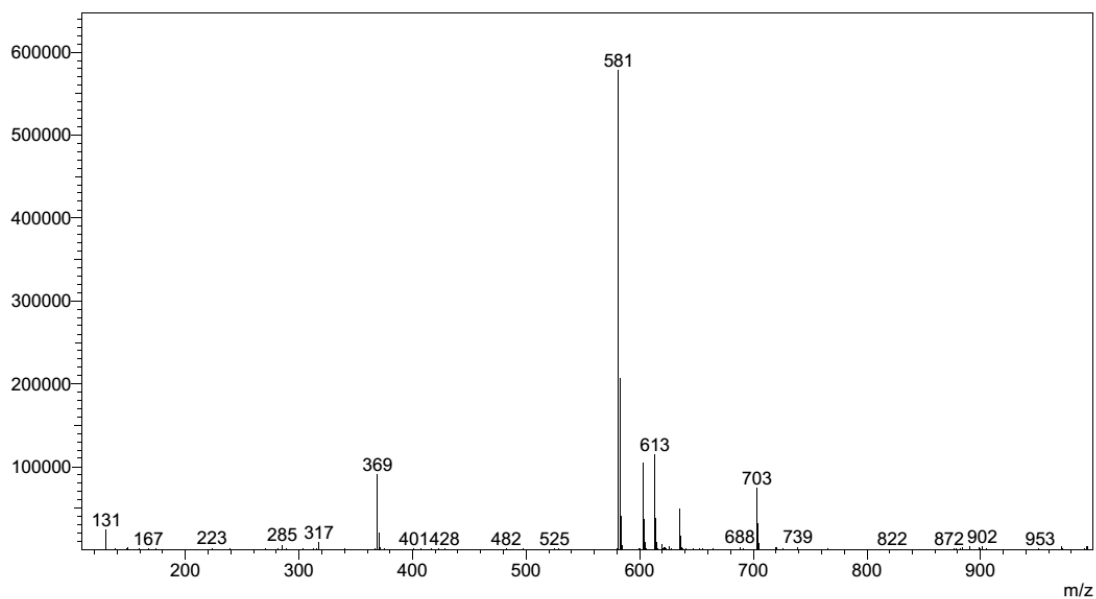


Figure S94. MS-ESI for compound 18.

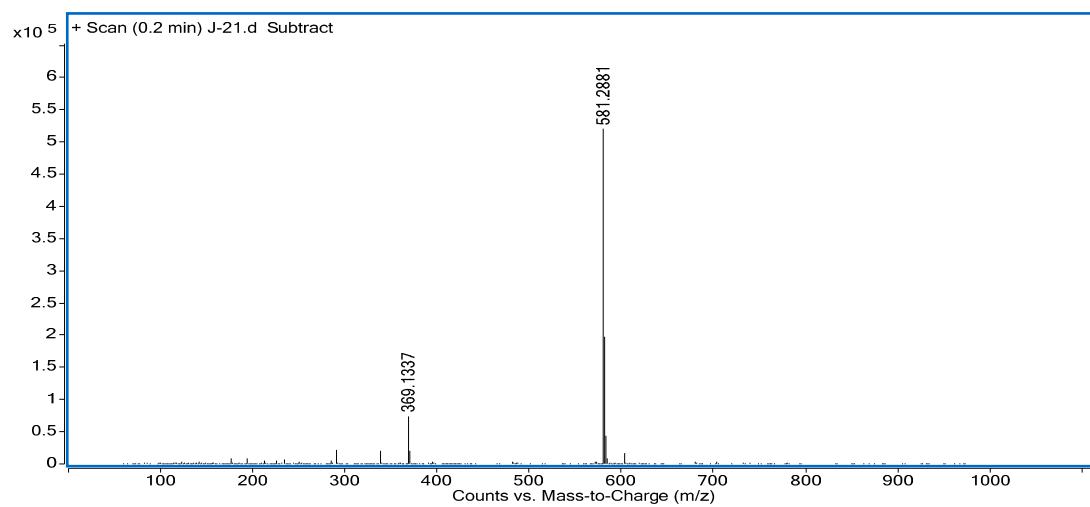


Figure S95. HRMS-ESI for compound 18.