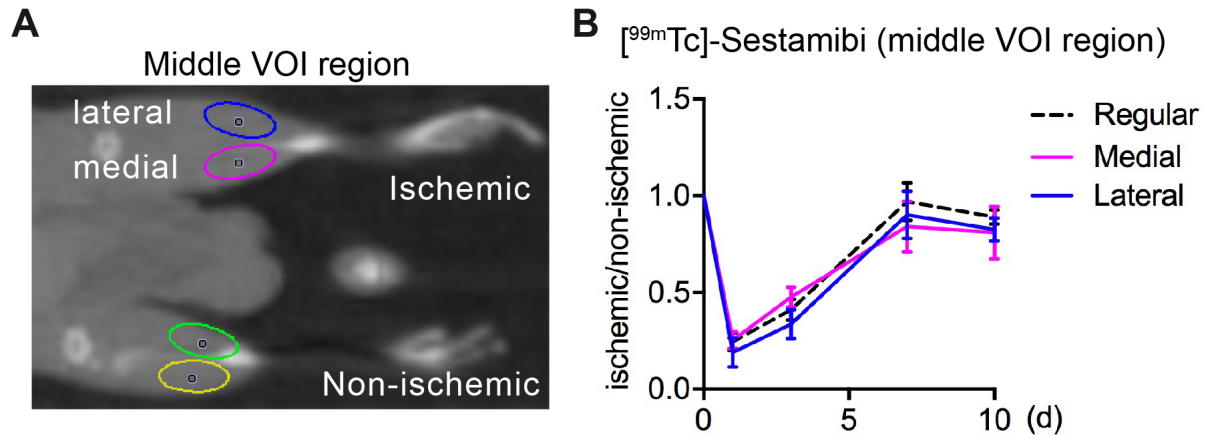
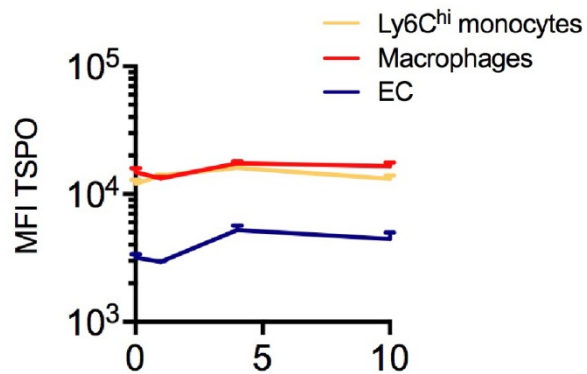


Supplementary Figures



Supplementary Figure 1: [^{99m}Tc]-sestamibi signal ratios in complete VOI vs subregions. (a) Position of subregions of VOI within the region of the middle VOI, defined by micro CT. Position was chosen to preferentially include muscle tissue. (b) Quantification of [^{99m}Tc]-sestamibi uptake as ratio of ischemic vs non-ischemic regions in subregions and regular middle VOI. n=5 (d1, 3, 7 and 10); n=2 (d15).



Supplementary Figure 2: Cell-type specific TSPO expression over time. Single cell suspensions were prepared from muscles at indicated time after HLI and intracellular TSPO stained in gated cell populations. Data representative of 7 independent experiments, n=5 (d0), 3 (d1), 6 (d4), 5 (d10).