

B

MV4-11

Control 250 nM ABBV-075

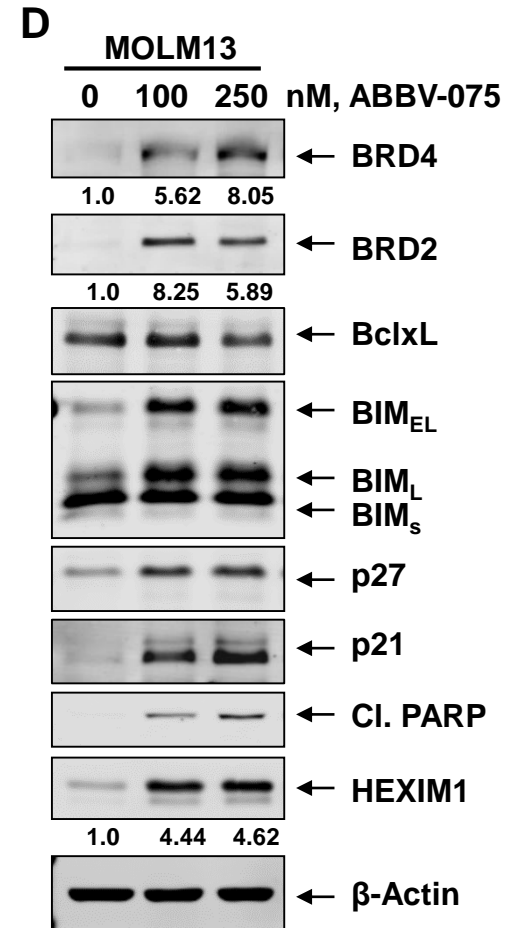
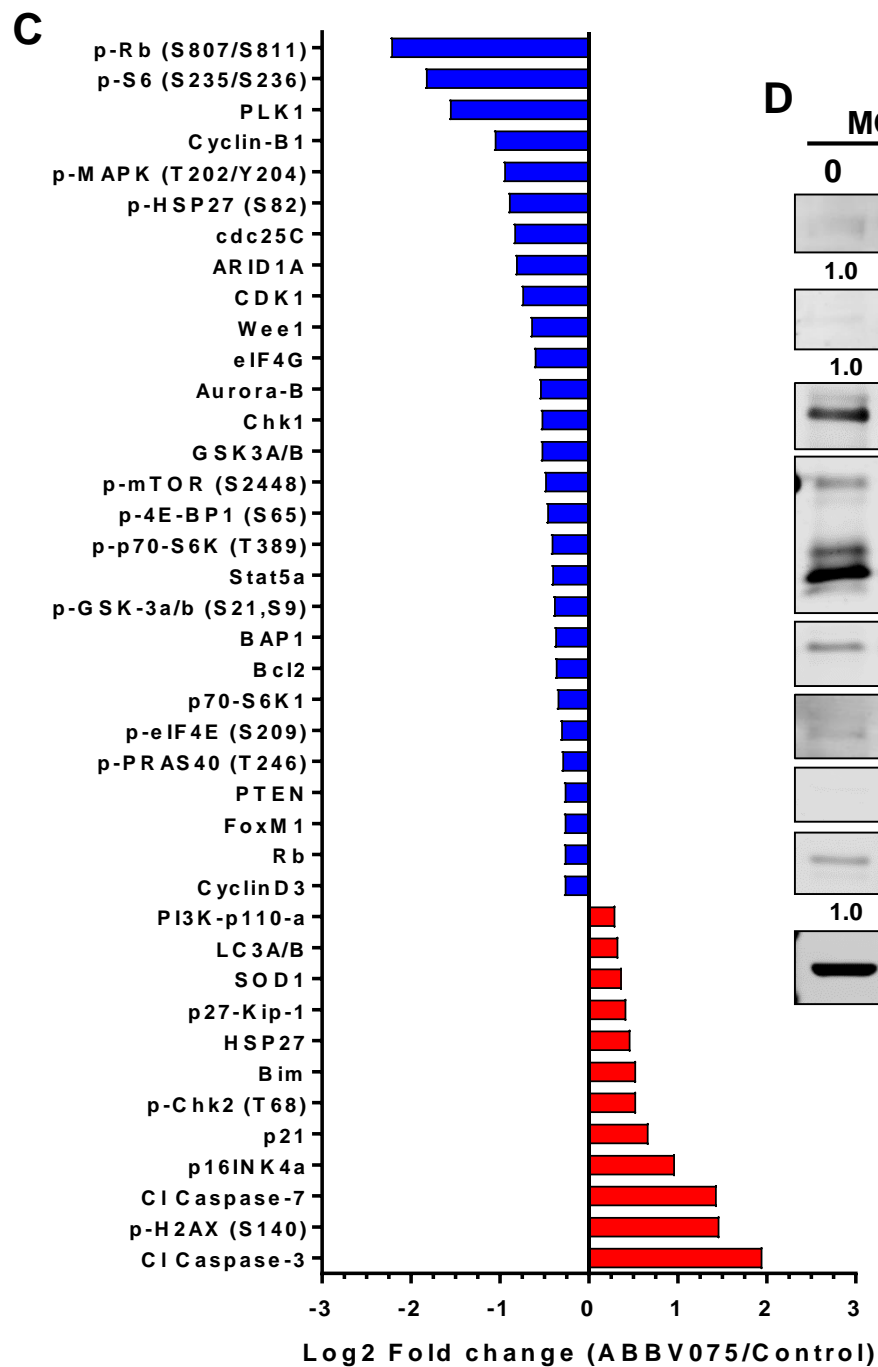
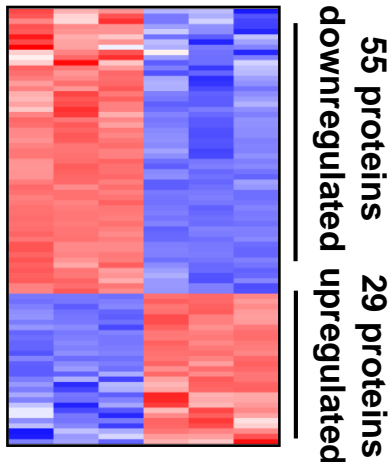
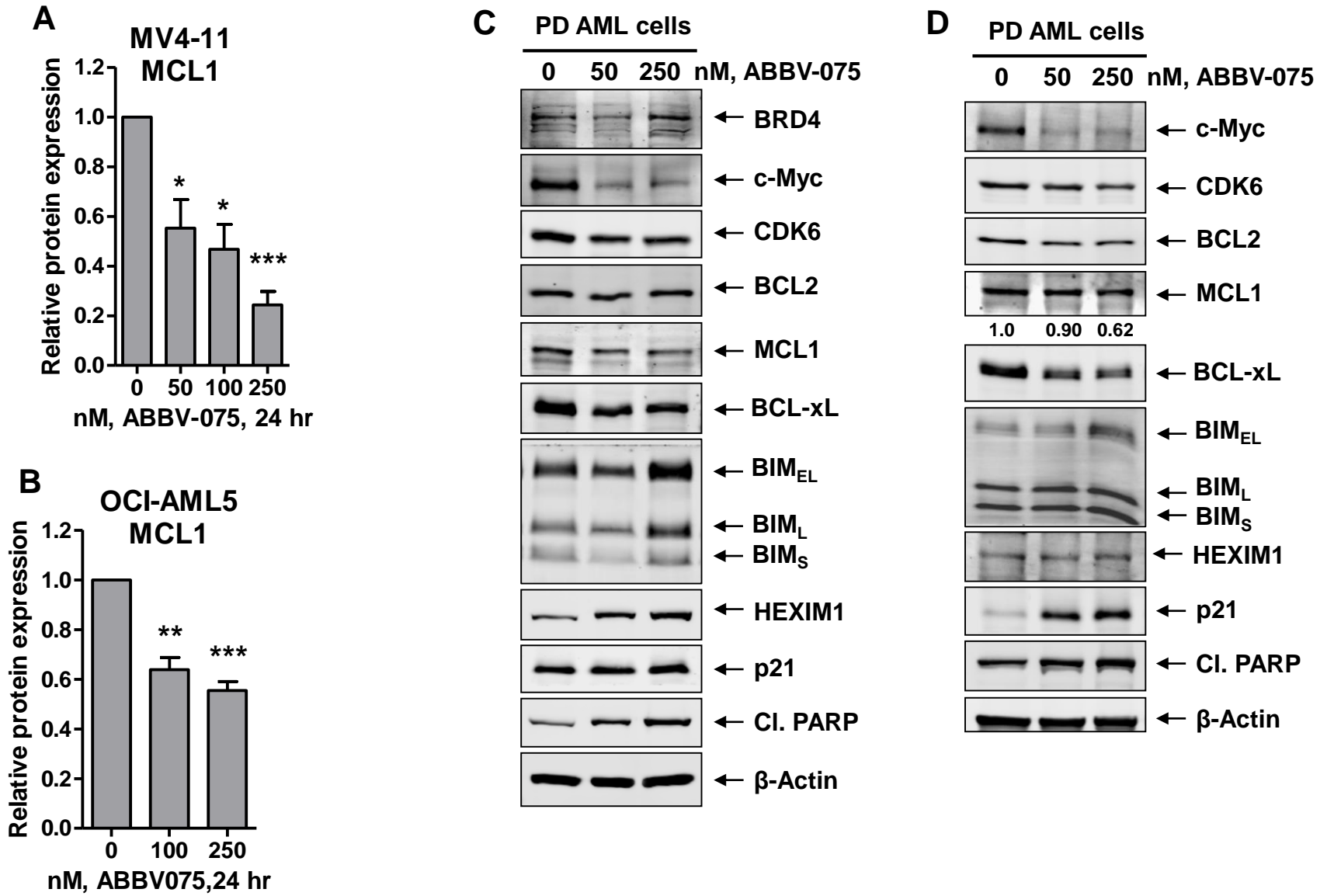


Figure S3



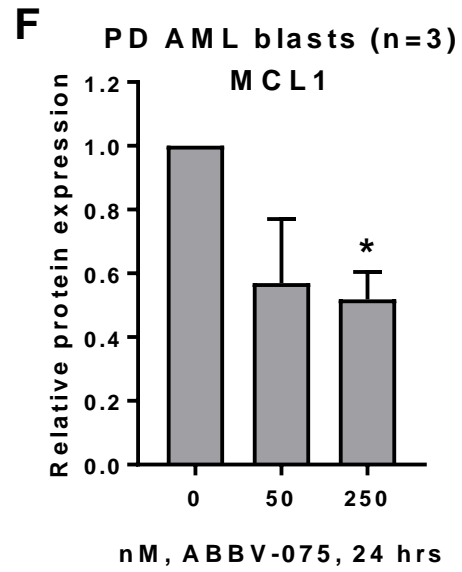
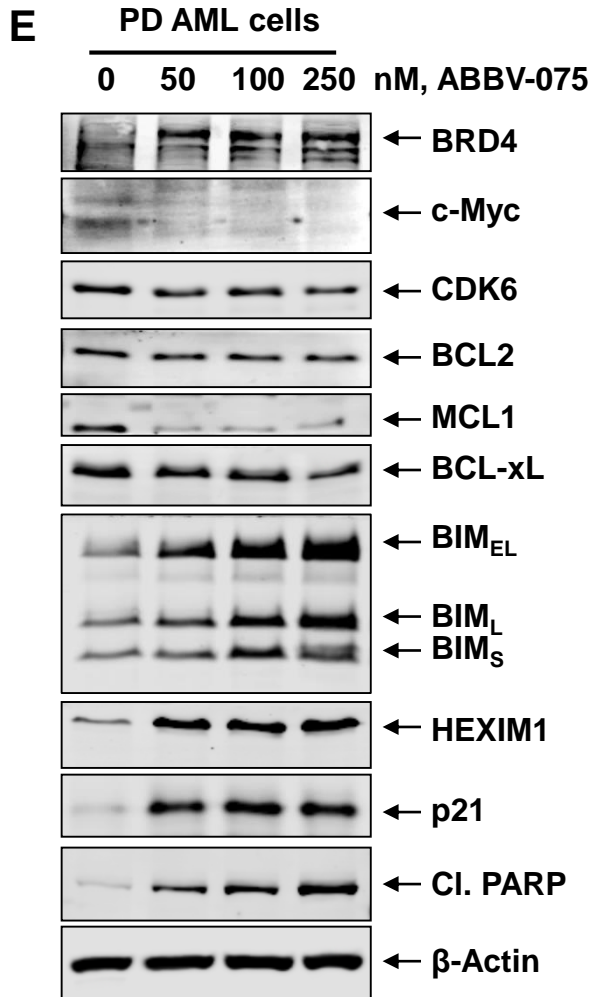


Figure S3

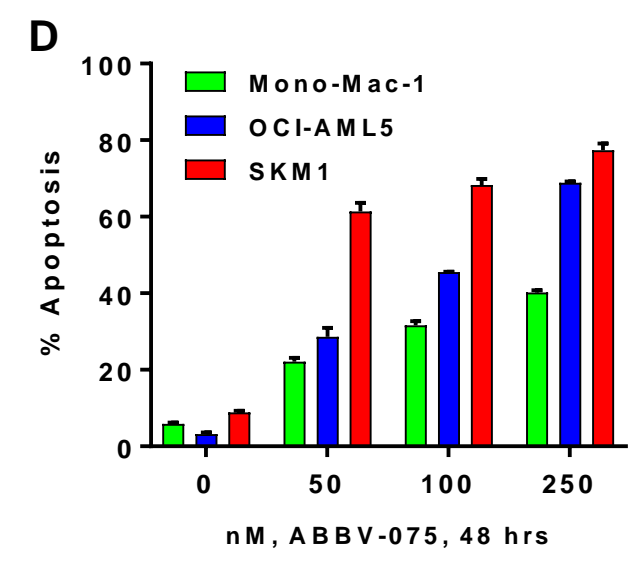
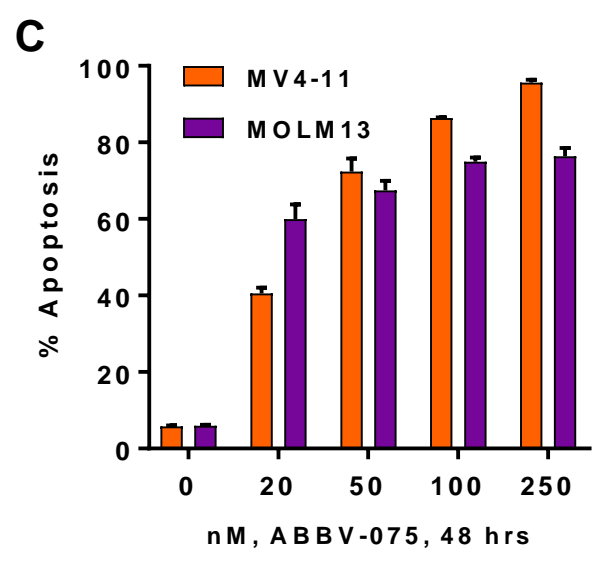
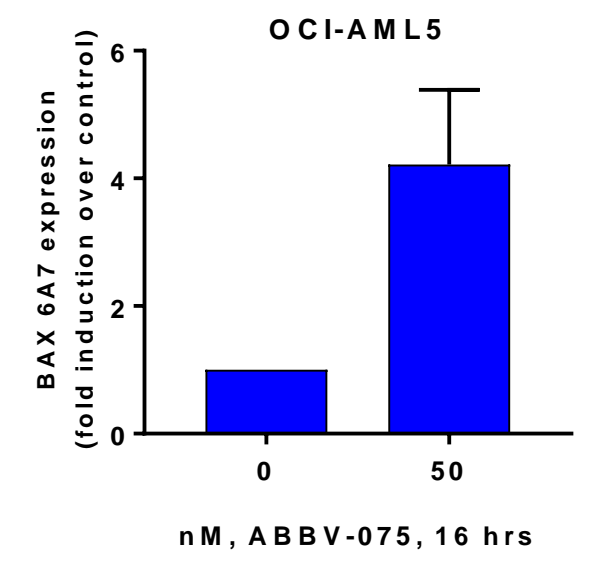
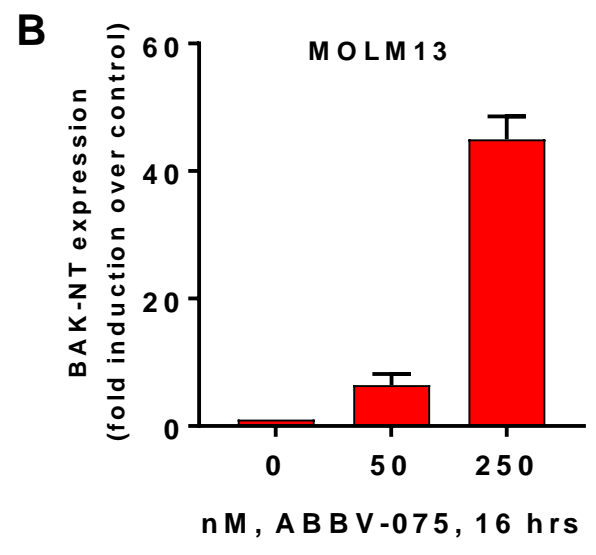
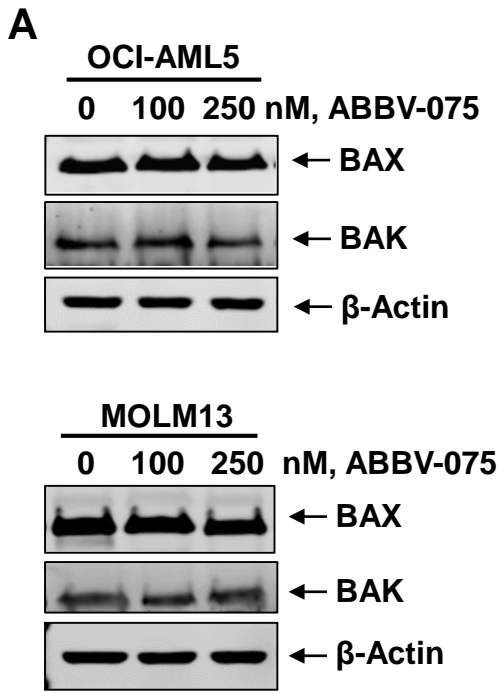


Figure S4

Figure S4

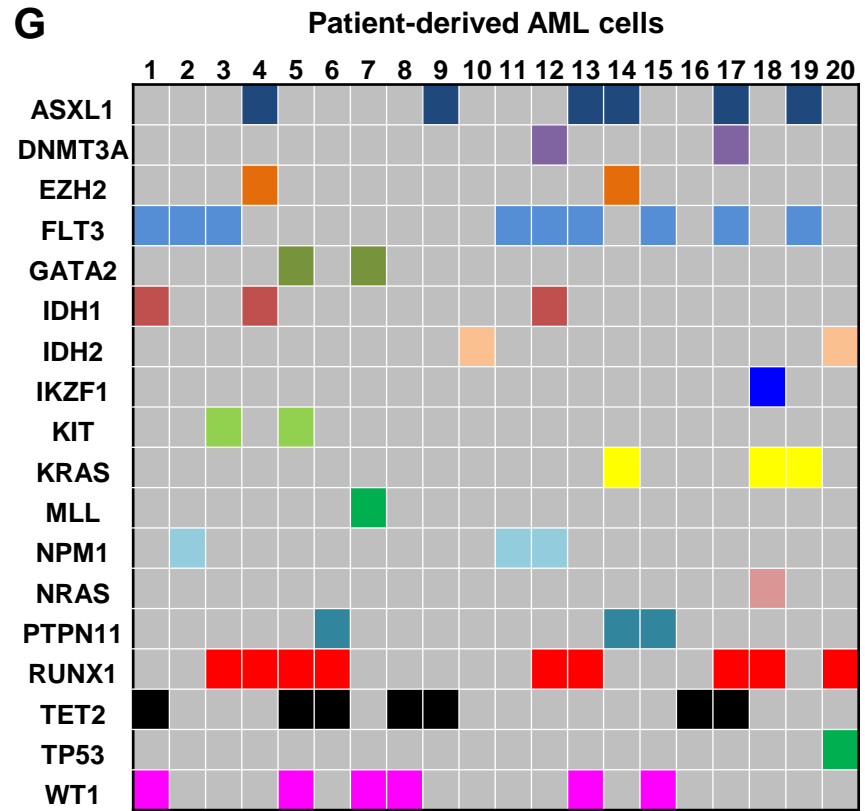
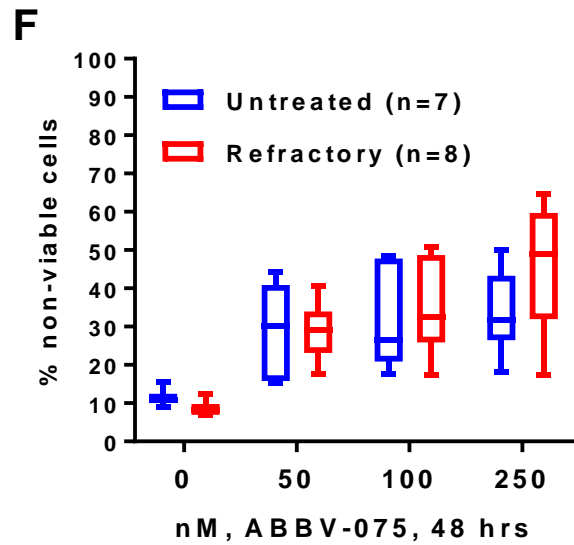
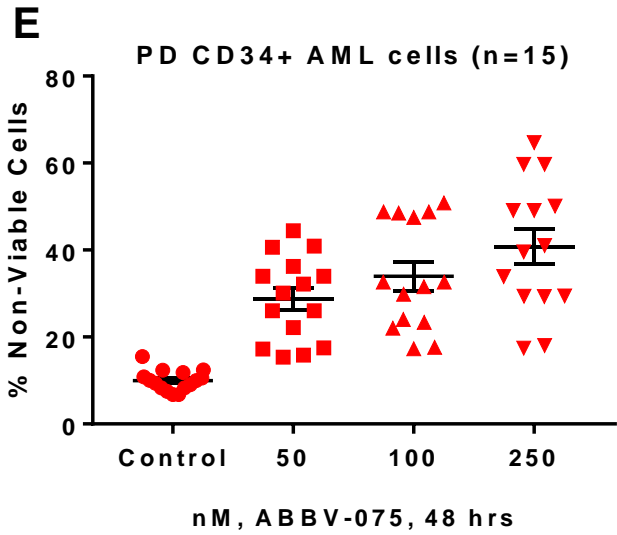
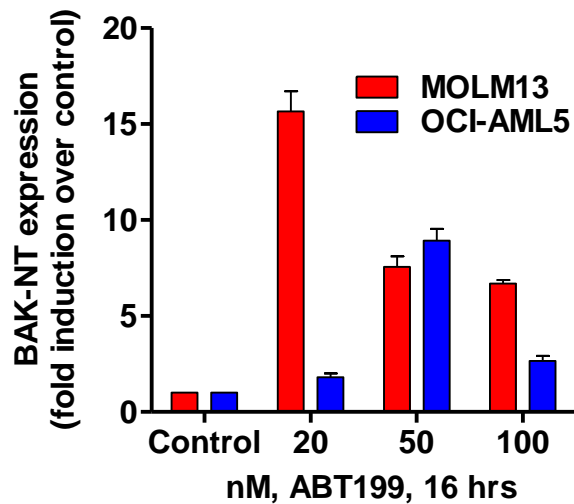
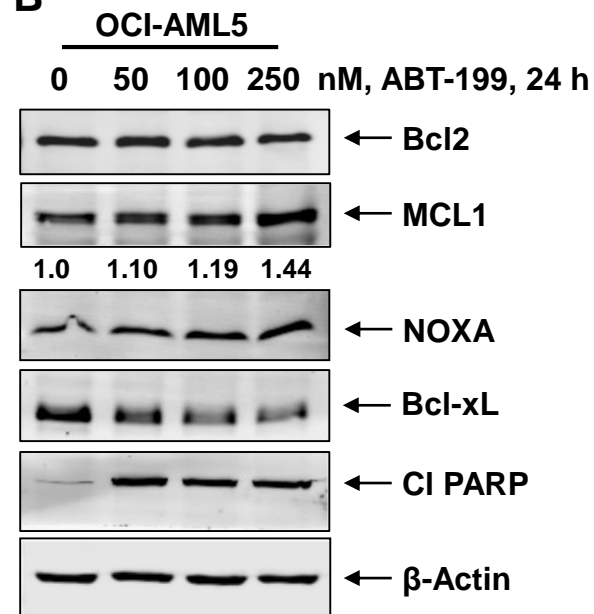


Figure S5

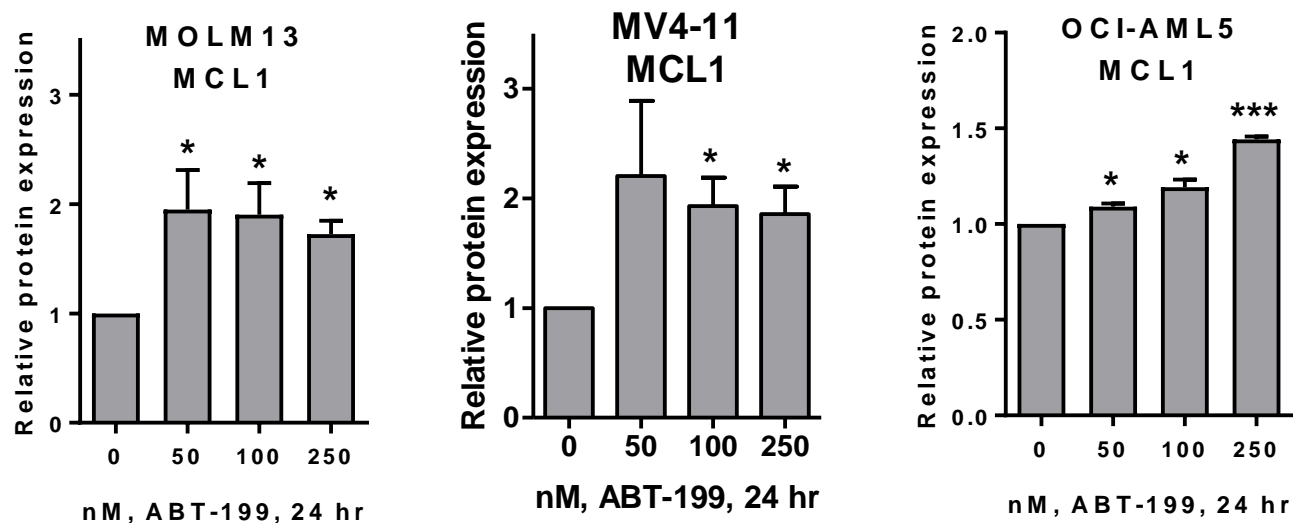
A



B



C



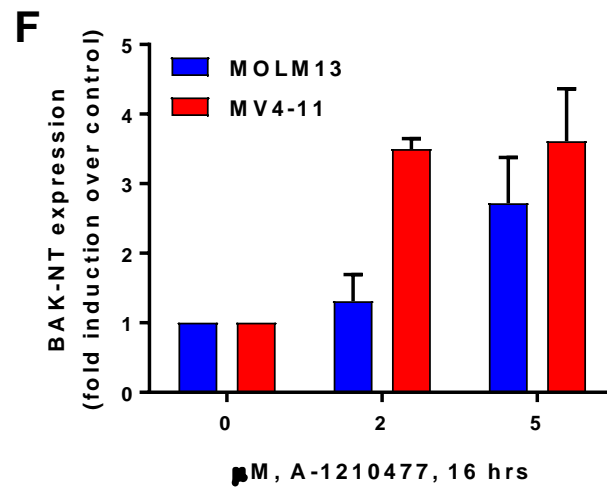
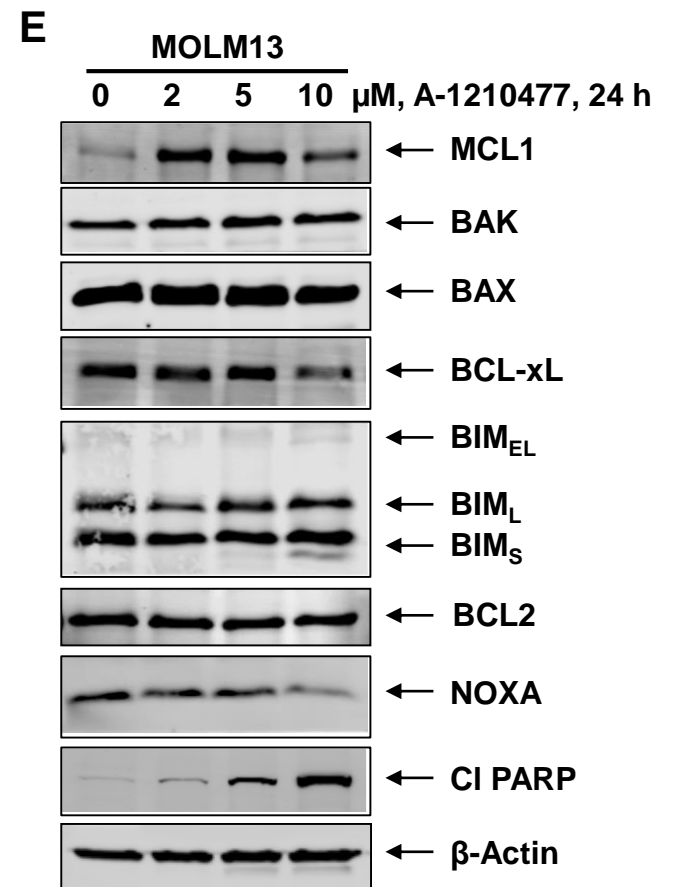
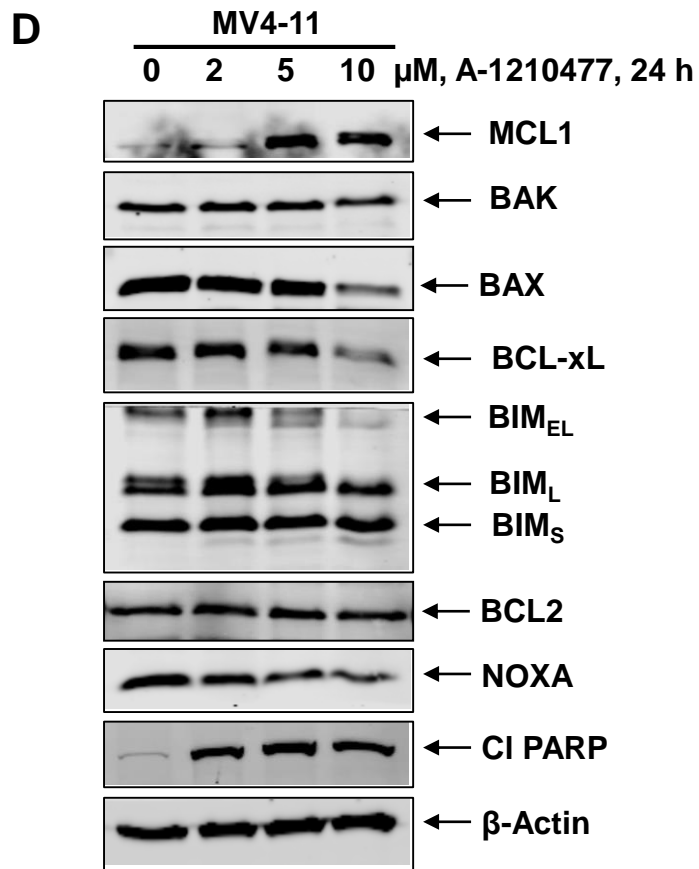


Figure S5

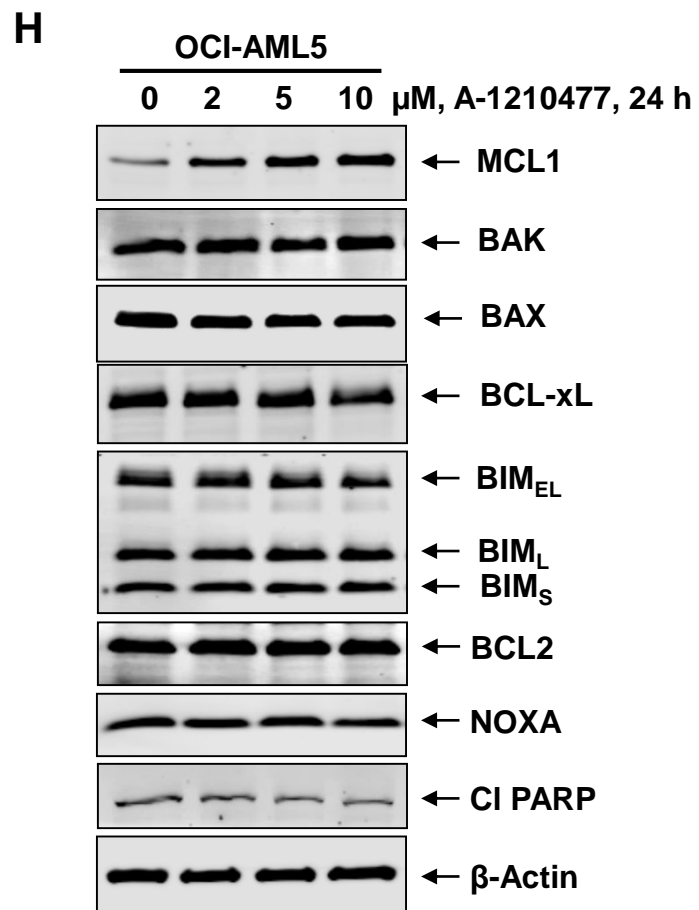
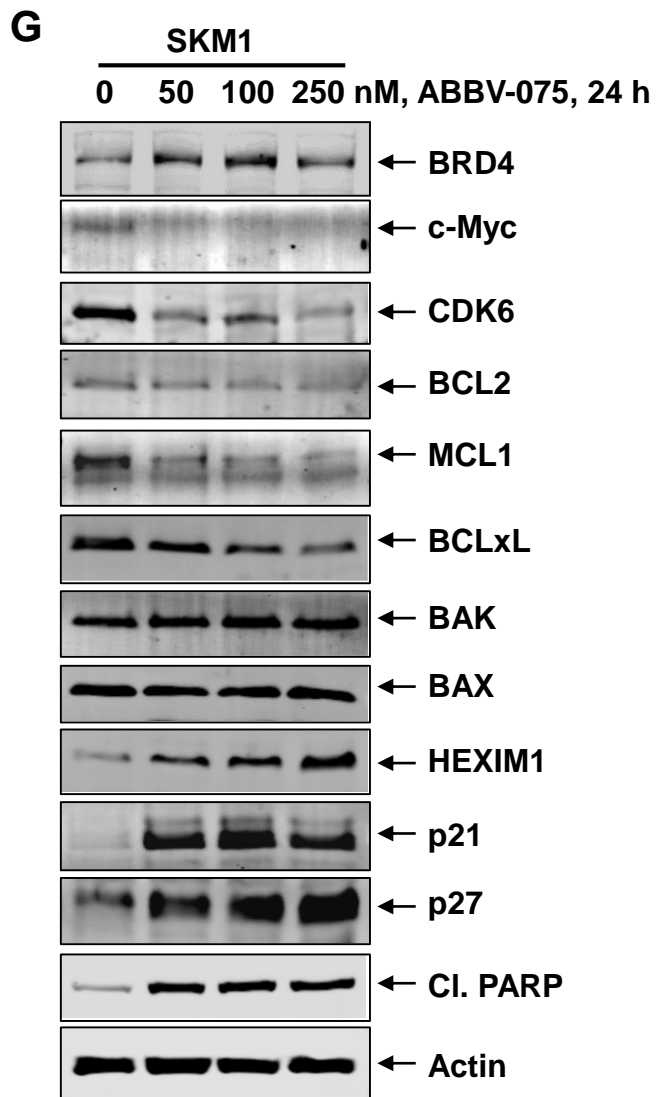


Figure S5

Figure S6**A**

<u>MV4-11</u>			
ABBV-075 (nM)	ABT-199 (nM)	Effect	CI
10.0	20.0	0.594	0.39211
10.0	50.0	0.715	0.30182
10.0	100.0	0.8455	0.20539
20.0	20.0	0.8475	0.40478
20.0	50.0	0.889	0.33971
20.0	100.0	0.929	0.26833

B

<u>MOLM13</u>			
ABBV-075 (nM)	ABT-199 (nM)	Effect	CI
50.0	20.0	0.534	0.33727
50.0	50.0	0.568	0.30983
50.0	100.0	0.6975	0.15305
100.0	20.0	0.5915	0.48407
100.0	50.0	0.6795	0.31280
100.0	100.0	0.8015	0.14621

C

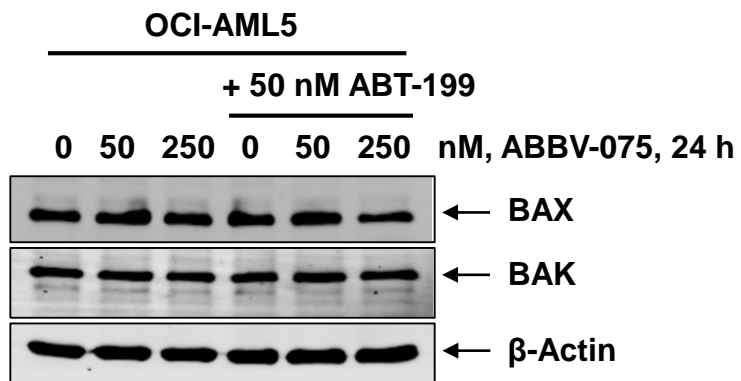
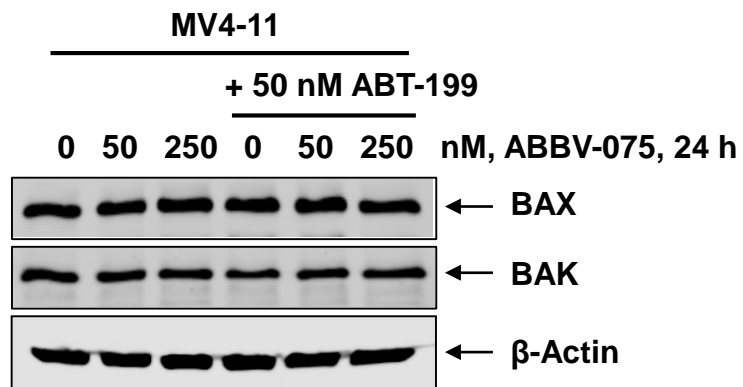
<u>OCI-AML5</u>			
ABBV-075 (nM)	ABT-199 (nM)	Fa	CI Value
50	50	0.691	0.27842
60	60	0.729	0.26517
70	70	0.722	0.32281
75	75	0.714	0.36310
80	80	0.702	0.41661
90	90	0.702	0.46869
100	100	0.712	0.49005

D

<u>SKM1</u>			
ABBV-075 (nM)	ABT-199 (nM)	Fa	CI Value
20.0	100.0	0.3305	0.42311
50.0	100.0	0.548	0.32541
100.0	100.0	0.669	0.34624
20.0	200.0	0.376	0.35094
50.0	200.0	0.6305	0.21596
100.0	200.0	0.7505	0.21389

Figure S7

A



B

MOLM13			
A-1210477 (μM)	ABBV-075 (nM)	Fa	CI Value
0.5	20.0	0.7088	0.27393
0.5	50.0	0.7355	0.43366
0.5	100.0	0.8841	0.14612
1.0	20.0	0.7727	0.24572
1.0	50.0	0.8214	0.25577
1.0	100.0	0.8909	0.17157
2.0	20.0	0.9186	0.13651
2.0	50.0	0.9257	0.13851
2.0	100.0	0.9278	0.15428
5.0	20.0	0.9123	0.34715
5.0	50.0	0.9193	0.33870
5.0	100.0	0.9383	0.28344

C

<u>OCI-AML5</u>			
A-1210477 (μ M)	ABBV-075 (nM)	Fa	CI Value
0.5	50.0	0.219	0.73280
0.5	100.0	0.3845	0.72301
0.5	250.0	0.7181	0.52313
1.0	50.0	0.2682	0.57865
1.0	100.0	0.4257	0.62173
1.0	250.0	0.6402	0.71792
2.0	50.0	0.3713	0.37986
2.0	100.0	0.5283	0.43200
2.0	250.0	0.7522	0.44816
5.0	50.0	0.4971	0.24116
5.0	100.0	0.6007	0.33300
5.0	250.0	0.7584	0.43510
10.0	50.0	0.5802	0.17943
10.0	100.0	0.7117	0.21513
10.0	250.0	0.8346	0.28625

D

<u>MV4-11</u>			
A-1210477 (μ M)	ABBV-075 (nM)	Fa	CI Value
1.0	10.0	0.8552	0.11331
1.0	20.0	0.9124	0.07116
1.0	50.0	0.9247	0.06649
2.0	10.0	0.8528	0.22334
2.0	20.0	0.9442	0.09085
2.0	50.0	0.9493	0.08562
5.0	10.0	0.9693	0.13312
5.0	20.0	0.9737	0.11685
5.0	50.0	0.9815	0.08697

E

<u>SKM1</u>			
A-1210477 (μ M)	ABBV-075 (nM)	Fa	CI Value
2.0	20.0	0.5	0.25028
5.0	50.0	0.5788	0.21821
2.0	100.0	0.6489	0.16344
5.0	20.0	0.6747	0.02231
5.0	50.0	0.7055	0.03459
5.0	100.0	0.7742	0.02108
10.0	20.0	0.8225	0.00155
10.0	50.0	0.8793	8.67E-4
10.0	100.0	0.9123	5.33E-4

Figure S7

Figure S7

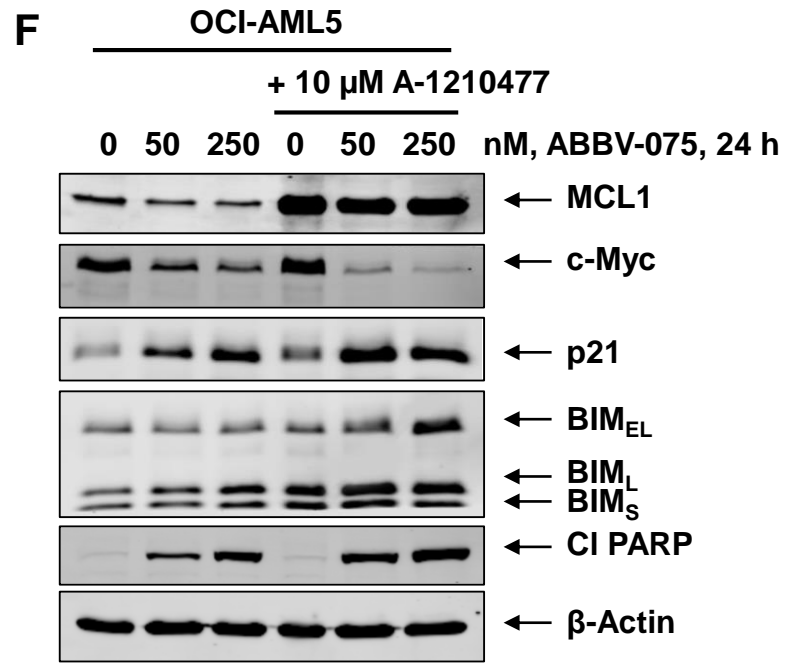


Figure S8**A**

<u>MV4-11</u>			
A-1210477 (μM)	ABT199 (nM)	Effect	CI
0.5	20.0	0.9411	0.01271
1.0	20.0	0.975	0.01108
2.0	20.0	0.9786	0.01920
0.5	50.0	0.969	0.00692
1.0	50.0	0.9785	0.00970
2.0	50.0	0.9818	0.01661

<u>OCI-AML5</u>			
A-1210477 (μM)	ABT199 (nM)	Effect	CI
2.0	20.0	0.6965	0.19045
5.0	20.0	0.818	0.08889
10.0	20.0	0.8686	0.05740
2.0	50.0	0.7784	0.29386
5.0	50.0	0.8387	0.18839
10.0	50.0	0.9251	0.07065

<u>MOLM13</u>			
A-1210477 (μM)	ABT199 (nM)	Effect	CI
0.5	20.0	0.5335	0.11286
1.0	20.0	0.58575	0.03314
2.0	20.0	0.66135	0.00700
0.5	50.0	0.5382	0.24749
1.0	50.0	0.58675	0.07592
2.0	50.0	0.70345	0.00485

<u>SKM1</u>			
A-1210477 (μM)	ABT199 (nM)	Fa	CI Value
2.0	20.0	0.1432	0.60168
5.0	20.0	0.2244	0.15549
10.0	20.0	0.301	0.07683
2.0	50.0	0.1537	0.71382
5.0	50.0	0.274	0.07107
10.0	50.0	0.36	0.03297

Figure S8

B

A-1210477 and ABT-199

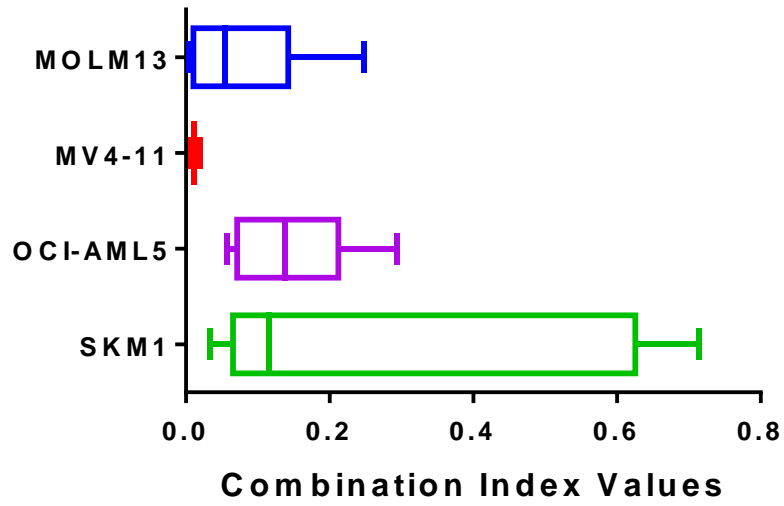


Figure S9

PD CD34+ AML			
ABBV-075 (nM)	ABT-199 (nM)	Effect	CI
20.0	10.0	0.424	0.19660
50.0	10.0	0.398	0.26248
100.0	10.0	0.385	0.32964
250.0	10.0	0.501	0.09861
20.0	20.0	0.497	0.20108
50.0	20.0	0.489	0.21638
100.0	20.0	0.469	0.26051
250.0	20.0	0.471	0.25878

PD CD34+ AML			
ABBV-075 (nM)	ABT-199 (nM)	Effect	CI
50.0	10.0	0.6735	0.36523
100.0	10.0	0.7287	0.20777
250.0	10.0	0.749	0.16593
50.0	20.0	0.8197	0.13496
100.0	20.0	0.7998	0.17790
250.0	20.0	0.8373	0.10356
50.0	50.0	0.8666	0.15737
100.0	50.0	0.8647	0.16297
250.0	50.0	0.891	0.09632

PD CD34+ AML			
ABBV-075 (nM)	ABT-199 (nM)	Effect	CI
50.0	10.0	0.6729	0.16460
100.0	10.0	0.7745	0.14263
250.0	10.0	0.839	0.18058
50.0	20.0	0.7409	0.09617
100.0	20.0	0.8368	0.07417
250.0	20.0	0.8228	0.21799

PD CD34+ AML			
ABBV-075 (nM)	ABT-199 (nM)	Effect	CI
20.0	10.0	0.6071	0.07783
50.0	10.0	0.6268	0.16982
100.0	10.0	0.7252	0.16244
20.0	20.0	0.626	0.06831
50.0	20.0	0.7598	0.06043
100.0	20.0	0.8096	0.07457

PD CD34+ AML			
ABBV-075 (nM)	ABT-199 (nM)	Effect	CI
20.0	10.0	0.325	0.24874
50.0	10.0	0.3842	0.38171
100.0	10.0	0.4761	0.37597
20.0	20.0	0.3443	0.21128
50.0	20.0	0.4653	0.20398
100.0	20.0	0.6184	0.12649

Figure S9

PD CD34+ AML			
ABBV-075 (nM)	ABT-199 (nM)	Effect	CI
50.0	10.0	0.2311	0.01844
100.0	10.0	0.2112	0.11381
250.0	10.0	0.2737	0.00570
50.0	20.0	0.2543	0.00724
100.0	20.0	0.2774	0.00330
250.0	20.0	0.3003	0.00182

PD CD34+ AML			
ABBV-075 (nM)	ABT-199 (nM)	Effect	CI
50.0	10.0	0.9463	0.15088
100.0	10.0	0.9736	0.08590
250.0	10.0	0.9808	0.06700
50.0	20.0	0.9851	0.11007
100.0	20.0	0.9856	0.10720
250.0	20.0	0.9858	0.10605

PD CD34+ AML			
ABBV-075 (nM)	ABT-199 (nM)	Effect	CI
50.0	10.0	0.544	0.09939
100.0	10.0	0.6153	0.04775
250.0	10.0	0.6056	0.05553
50.0	20.0	0.587	0.12594
100.0	20.0	0.6245	0.08519
250.0	20.0	0.6292	0.08260

PD CD34+ AML			
ABBV-075 (nM)	ABT-199 (nM)	Effect	CI
50.0	10.0	0.4909	0.01570
50.0	20.0	0.539	0.00372
50.0	50.0	0.6041	7.14E-4
250.0	10.0	0.5228	0.02791
250.0	20.0	0.5639	0.00769
250.0	50.0	0.6532	4.99E-4

PD CD34+ AML			
ABBV-075 (nM)	ABT-199 (nM)	Effect	CI
20.0	20.0	0.816	0.36609
50.0	20.0	0.848	0.29204
100.0	20.0	0.889	0.20457
20.0	50.0	0.848	0.73011
50.0	50.0	0.853	0.70238
100.0	50.0	0.887	0.52165

PD CD34+ AML			
ABBV-075 (nM)	ABT-199 (nM)	Effect	CI
50.0	10.0	0.513	0.02929
100.0	10.0	0.523	0.02233
250.0	10.0	0.577	0.00652
50.0	20.0	0.556	0.01074
100.0	20.0	0.526	0.03591
250.0	20.0	0.524	0.04530

Figure S9

<u>PD CD34+ AML</u>			
ABBV-075 (nM)	ABT-199 (nM)	Effect	CI
20.0	10.0	0.536	0.69403
50.0	10.0	0.543	0.67240
100.0	10.0	0.548	0.65734
250.0	10.0	0.528	0.71954
50.0	20.0	0.679	0.70350
100.0	20.0	0.713	0.58722
250.0	20.0	0.691	0.66089

<u>PD CD34+ AML</u>			
ABBV-075 (nM)	ABT-199 (nM)	Effect	CI
20.0	10.0	0.573	0.00854
50.0	10.0	0.595	0.00607
100.0	10.0	0.611	0.00480
20.0	20.0	0.611	0.00136
50.0	20.0	0.701	9.59 E-5
100.0	20.0	0.684	1.74E-4

<u>PD CD34+ AML</u>			
ABBV-075 (nM)	ABT-199 (nM)	Effect	CI
10.0	20.0	0.491	0.03297
20.0	20.0	0.517	0.02904
50.0	20.0	0.543	0.03200
100.0	20.0	0.59	0.02717
250.0	20.0	0.613	0.04146
10.0	50.0	0.539	0.03932
20.0	50.0	0.61	0.01745
50.0	50.0	0.634	0.01590
100.0	50.0	0.66	0.01478
250.0	50.0	0.663	0.02470

<u>PD CD34+ AML</u>			
ABBV-075 (nM)	ABT-199 (nM)	Effect	CI
20.0	10.0	0.268	0.38760
50.0	10.0	0.362	0.50415
100.0	10.0	0.473	0.54426
20.0	20.0	0.519	0.08776
50.0	20.0	0.539	0.19357
100.0	20.0	0.605	0.26960

Figure S10

<u>PD CD34+ AML</u>			
A-1210477 (μ M)	ABBV-075 (nM)	Effect	CI
2.0	20.0	0.3964	0.40621
2.0	50.0	0.4118	0.52400
2.0	100.0	0.4698	0.25387
5.0	20.0	0.5997	0.15391
5.0	50.0	0.5831	0.17009
5.0	100.0	0.6047	0.15184
10.0	20.0	0.8064	0.08141
10.0	50.0	0.8467	0.05646
10.0	100.0	0.8633	0.04746

<u>PD CD34+ AML</u>			
A-1210477 (μ M)	ABBV-075 (nM)	Effect	CI
2.0	20.0	0.4276	0.03706
2.0	50.0	0.3913	0.23960
2.0	100.0	0.4312	0.04199
5.0	20.0	0.3879	0.23930
5.0	50.0	0.4397	0.07770
5.0	100.0	0.4492	0.06985
10.0	20.0	0.5337	0.05430
10.0	50.0	0.5251	0.05964
10.0	100.0	0.5707	0.03615

<u>PD CD34+ AML</u>			
A-1210477 (μ M)	ABBV-075 (nM)	Effect	CI
2.0	20.0	0.2377	0.85025
2.0	50.0	0.3132	0.43475
2.0	100.0	0.4103	0.19749
5.0	20.0	0.3409	0.72157
5.0	50.0	0.3539	0.67026
5.0	100.0	0.4678	0.27047
10.0	20.0	0.5552	0.25757
10.0	50.0	0.6390	0.13167
10.0	100.0	0.6327	0.13983

<u>PD CD34+ AML</u>			
A-1210477 (μ M)	ABBV-075 (nM)	Effect	CI
2.0	20.0	0.3584	0.17587
2.0	50.0	0.360	0.18942
2.0	100.0	0.4049	0.13566
5.0	20.0	0.5279	0.17885
5.0	50.0	0.5098	0.19512
5.0	100.0	0.5285	0.17835
10.0	20.0	0.751	0.10881
10.0	50.0	0.7875	0.08499
10.0	100.0	0.8124	0.07051

Figure S10

<u>PD CD34+ AML</u>			
A-1210477 (μ M)	ABBV-075 (nM)	Fa	CI Value
2.0	20.0	0.715	0.42908
2.0	50.0	0.763	0.50417
2.0	100.0	0.7822	0.70809
5.0	20.0	0.8225	0.21166
5.0	50.0	0.8446	0.23253
5.0	100.0	0.8215	0.48038
10.0	20.0	0.9234	0.11512
10.0	50.0	0.9177	0.13565
10.0	100.0	0.8948	0.22494

Figure S11

<u>PD CD34+ AML</u>			
A-1210477 (μ M)	ABT-199 (nM)	Effect	CI
2.0	10.0	0.2857	0.10529
5.0	10.0	0.39	0.01353
10.0	10.0	0.604	3.18E-4
2.0	20.0	0.3532	0.04557
5.0	20.0	0.4189	0.01342
10.0	20.0	0.6136	3.95E-4
2.0	50.0	0.4041	0.03913
5.0	50.0	0.5085	0.00549
10.0	50.0	0.6916	1.56E-4

<u>PD CD34+ AML cells</u>			
A-1210477 (μ M)	ABT-199 (nM)	Effect	CI
2.0	10.0	0.2094	0.24978
5.0	10.0	0.2941	0.32612
10.0	10.0	0.5213	0.16813
2.0	20.0	0.2286	0.21233
5.0	20.0	0.3562	0.21855
10.0	20.0	0.4917	0.19872
5.0	50.0	0.2701	0.38573
5.0	50.0	0.3619	0.21104
10.0	50.0	0.5201	0.16928

<u>PD CD34+ AML cells</u>			
A-1210477 (μ M)	ABT-199 (nM)	Effect	CI
2.0	10.0	0.2839	0.08734
5.0	10.0	0.3856	0.00773
10.0	10.0	0.66	1.92E-5
2.0	20.0	0.3683	0.02137
5.0	20.0	0.4418	0.00422
10.0	20.0	0.6568	3.78E-5
2.0	50.0	0.4007	0.02520
5.0	50.0	0.5291	0.00155
10.0	50.0	0.7328	1.28E-5

Figure S12

