

BELUGA WHALE (Cook Inlet DPS)



BLUE WHALE (E. North Pacific Stock)



BOWHEAD WHALE (Western Arctic Stock)



FIN WHALE (CA-OR-WA Stock)



S1 Figure. Approximate geographic distribution (shaded area) of cetacean marine mammal populations analyzed in our study (*continue in next page...*).

FIN WHALE (Western North Atlantic Stock)



GRAY WHALE (E. North Pacific Stock)



GRAY WHALE (W. North Pacific DPS)



HUMPBACK WHALE (C. America DPS)



S1 Figure. (cont.) Approximate geographic distribution (shaded area) of cetacean marine mammal populations analyzed in our study (continue in next page...).

HUMPBACK WHALE (Hawaii DPS)



HUMPBACK WHALE (Mexico DPS)



HUMPBACK WHALE (West Indies DPS)



KILLER WHALE (Southern Resident DPS)



S1 Figure. (cont.) Approximate geographic distribution (shaded area) of cetacean marine mammal populations analyzed in our study (continue in next page...).

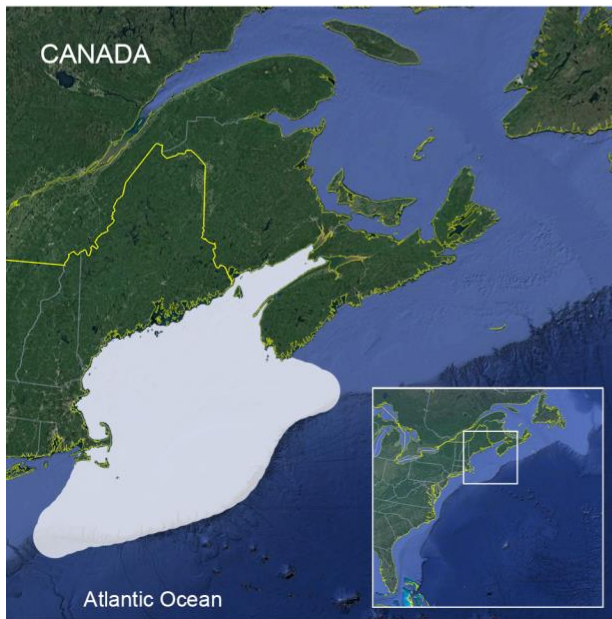
NORTH ATLANTIC RIGHT WHALE



SEI WHALE (E. North Pacific Stock)



SEI WHALE (Nova Scotia Stock)



S1 Figure. (cont.) Approximate geographic distribution (shaded area) of cetacean marine mammal populations analyzed in our study.