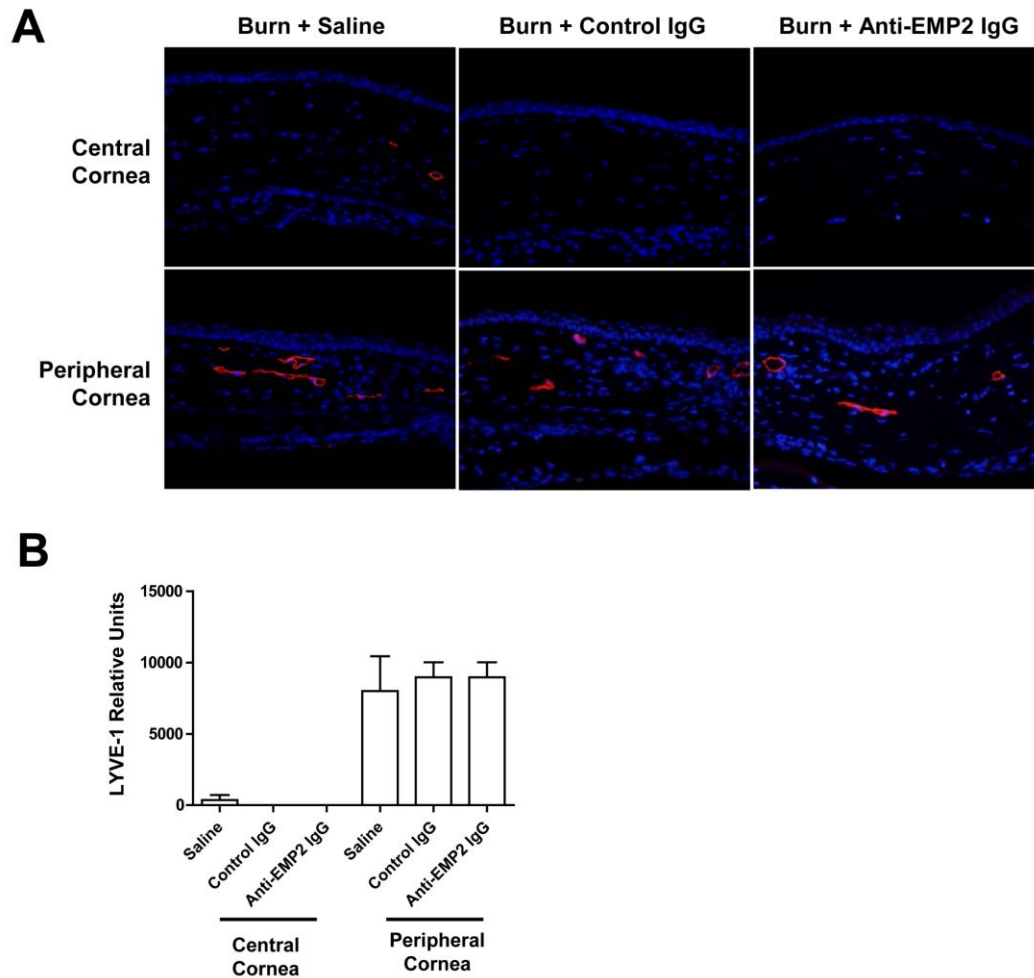


Supplemental Figure 1



Supplemental Fig 1. Anti-EMP2 treatment does not affect LYVE-1 expression in the central or peripheral cornea.

(A, top panel) Little to no LYVE-1 staining was observed in the central areas of the burned corneas, regardless the type of treatment—saline, control IgG, or anti-EMP2 IgG. (A, bottom panel) Lymphatic vessel staining is present in the periphery of the cornea in the saline, control IgG, and anti-EMP2 treated groups, however, (C) upon quantitation, there is no statistical difference in the staining intensity of LYVE-1. The

LYVE-1 positive vessels stained with Alexa Fluor 594 were quantitated using Image J to determine relative staining units in each of the central and peripheral image regions.