

Supplemental data, Las Heras et al. *Fig. S5*

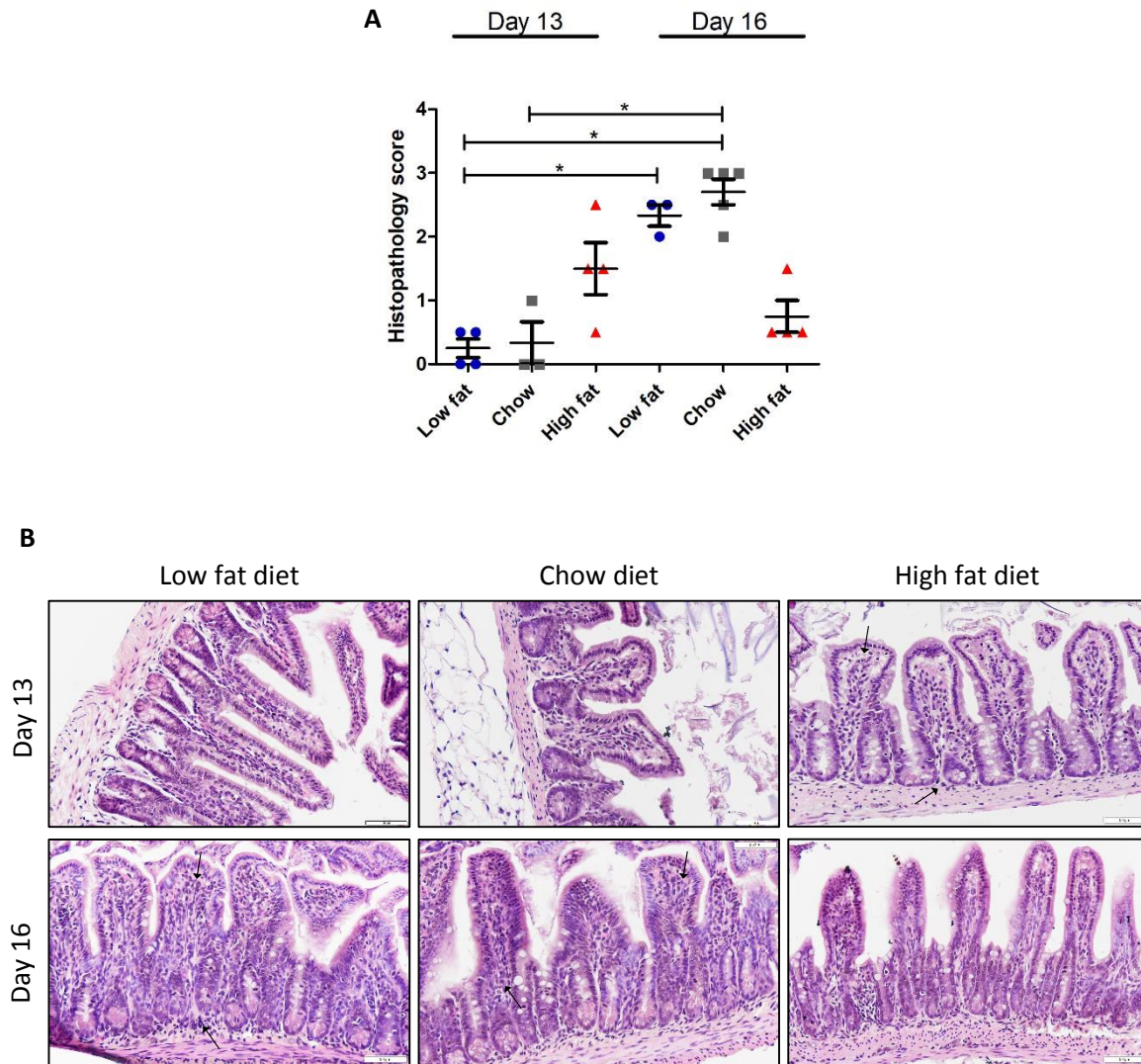


Figure S5. Histopathology score. **A.** Histopathology score of ileal sections 13 days post dietary change (Day 13) and 3 days post-infection (Day 16). Error bars represent SEM. **B.** The ileal samples were scored on a scale of 0-3 for 2 parameters: infiltration of inflammatory cells (mostly mononuclear cells) to the villi and infiltration of mono- and polymorphonuclear cells to the crypt, yielding a maximum score of 6. In our model, polymorphonuclear cells were mainly located at the bottom of the crypts. The gradient of the inflammatory cell infiltration was based on: 3 = highly increased; 2 = moderately increased, 1 = mildly increased and 0 = normal (scale bar, 50 μ m).