

Appendices

Appendix Text

Description of conversion of stunting prevalence among children under 5 to stunting prevalence among children age 2

To create the conversion factors, we used data from the WHO Database on Child Growth and Malnutrition.¹ Specifically, we used the latest nationally-representative survey since 2000 (for both sexes) from each country, for which both stunting prevalence among children age 0 to 59 months and among children age 24 to 35 months were available. This resulted in a dataset of 104 observations (from the same number of countries) from the 137 countries on our analysis list, from 2000 to 2014. We calculated country-specific ratios of stunting prevalence among children age 2 to stunting prevalence among children under 5. For those 33 countries (of the 137 developing countries in this analysis) without country-specific ratios, we used population-weighted means by sub-region. We then multiplied the country-specific stunting prevalence among children under 5 from the Nutrition Impact Model Study (NIMS)² these ratios to convert the prevalence values to prevalence of stunting among children age 2. We used the same methodology to convert mean HAZ among children under 5 from NIMS to mean HAZ among children age 2 (using data from 102 surveys from the WHO Database on Child Growth and Malnutrition that had both stunting prevalence among children age 0 to 59 months and among children age 24 to 35 months). Additional details and the country-specific ratios used (either directly or in population-weighted averages by sub-region for missing countries) are visible in Appendix Table 2 in Danaei et al.³

Description of methods used to estimate economic loss attributable to risk factors

In order to estimate the income loss associated with each of the risk factors considered here, we combined our PAFs with estimates of the total lifetime wage income lost attributable to poor linear growth among a cohort of babies born in 2010. This generated estimates of the lifetime wage income lost attributable to each of the risk factors considered in this analysis. The estimates of the wage income losses due to suboptimal height-for-age Z-scores (HAZ) are from previous work done by our group (described in detail in Fink et al.⁴).

In order to apply our PAFs to these estimates of wage income loss due to suboptimal HAZ, the relationship between HAZ and stunting (height-for-age Z-score less than -2) prevalence must be roughly linear. To assess the veracity of this assumption, we used 309 (nationally representative, for both sexes) data points from the WHO Database on Child Growth and Malnutrition¹ from 120 countries and 15 years (2000-2014) where mean HAZ and stunting prevalence were estimated for the same population. The raw data and a linear regression model fit are presented below (Appendix Figure 3). While not perfectly linear at the extremes, we are confident that the relationship between stunting and HAZ is approximately linear over the range of stunting values applicable to the 137 developing countries in this analysis. We also used a spline fit to capture this relationship and the results remained the same.

The steps in this analysis are described below:

- 1) Compute cohort-level lifetime wage income losses associated with suboptimal HAZ (using the main model outlined in the methods section of Fink et al.⁴)
- 2) Compute the PAFs of stunting attributable to each of the psychosocial risk factors (described in this paper's methods section)
- 3) Assess the linearity of the relationship between HAZ and stunting prevalence (described above and visualized in Appendix Figure 3); linearity makes step 4 valid
- 4) Multiply the PAFs (step 2) by the lifetime wage income losses associated with suboptimal HAZ (step 1)

We incorporated uncertainty at every step of the analysis:

- i. Uncertainty in baseline stunting prevalence (standard errors obtained from NIMS project)
- ii. Uncertainty in the PAFs (based on uncertainty in relative risks and risk factor prevalences)
- iii. Uncertainty in resulting increase in schooling (standard errors obtained from Adair et al.⁵)
- iv. Uncertainty in wage gains from schooling (estimated as described in Fink et al.⁴)

For bootstrapping, we take independent random draws from each of the distributions.

Appendix Table 1: List of 137 countries and their corresponding sub-region and region

Country name	Sub-region	Region
Afghanistan	Asia, South	South Asia
Algeria	North Africa / Middle East	North Africa/Middle East
Angola	Sub-Saharan Africa, Central	Sub-Saharan Africa
Antigua and Barbuda	Caribbean	Latin America/Caribbean
Argentina	Latin America, Southern	Latin America/Caribbean
Armenia	Asia, Central	Central Asia
Azerbaijan	Asia, Central	Central Asia
Bahamas	Caribbean	Latin America/Caribbean
Bahrain	North Africa / Middle East	North Africa/Middle East
Bangladesh	Asia, South	South Asia
Barbados	Caribbean	Latin America/Caribbean
Belize	Caribbean	Latin America/Caribbean
Benin	Sub-Saharan Africa, West	Sub-Saharan Africa
Bhutan	Asia, South	South Asia
Bolivia	Latin America, Andean	Latin America/Caribbean
Botswana	Sub-Saharan Africa, Southern	Sub-Saharan Africa
Brazil	Latin America, Tropical	Latin America/Caribbean
Burkina Faso	Sub-Saharan Africa, West	Sub-Saharan Africa
Burundi	Sub-Saharan Africa, East	Sub-Saharan Africa
Cambodia	Asia, Southeast	East Asia/Pacific
Cameroon	Sub-Saharan Africa, West	Sub-Saharan Africa
Cape Verde	Sub-Saharan Africa, West	Sub-Saharan Africa
Central African Republic	Sub-Saharan Africa, Central	Sub-Saharan Africa
Chad	Sub-Saharan Africa, West	Sub-Saharan Africa
Chile	Latin America, Southern	Latin America/Caribbean
China	Asia, East	East Asia/Pacific
Colombia	Latin America, Central	Latin America/Caribbean
Comoros	Sub-Saharan Africa, East	Sub-Saharan Africa
Congo	Sub-Saharan Africa, Central	Sub-Saharan Africa
Costa Rica	Latin America, Central	Latin America/Caribbean
Cote d'Ivoire	Sub-Saharan Africa, West	Sub-Saharan Africa
Cuba	Caribbean	Latin America/Caribbean
Democratic People's Republic of Korea	Asia, East	East Asia/Pacific
Democratic Republic of the Congo	Sub-Saharan Africa, Central	Sub-Saharan Africa
Djibouti	Sub-Saharan Africa, East	Sub-Saharan Africa
Dominica	Caribbean	Latin America/Caribbean
Dominican Republic	Caribbean	Latin America/Caribbean
Ecuador	Latin America, Andean	Latin America/Caribbean

Egypt	North Africa / Middle East	North Africa/Middle East
El Salvador	Latin America, Central	Latin America/Caribbean
Equatorial Guinea	Sub-Saharan Africa, Central	Sub-Saharan Africa
Eritrea	Sub-Saharan Africa, East	Sub-Saharan Africa
Ethiopia	Sub-Saharan Africa, East	Sub-Saharan Africa
Fiji	Oceania	East Asia/Pacific
Gabon	Sub-Saharan Africa, Central	Sub-Saharan Africa
Gambia	Sub-Saharan Africa, West	Sub-Saharan Africa
Georgia	Asia, Central	Central Asia
Ghana	Sub-Saharan Africa, West	Sub-Saharan Africa
Grenada	Caribbean	Latin America/Caribbean
Guatemala	Latin America, Central	Latin America/Caribbean
Guinea	Sub-Saharan Africa, West	Sub-Saharan Africa
Guinea-Bissau	Sub-Saharan Africa, West	Sub-Saharan Africa
Guyana	Caribbean	Latin America/Caribbean
Haiti	Caribbean	Latin America/Caribbean
Honduras	Latin America, Central	Latin America/Caribbean
India	Asia, South	South Asia
Indonesia	Asia, Southeast	East Asia/Pacific
Iran (Islamic Republic of)	North Africa / Middle East	North Africa/Middle East
Iraq	North Africa / Middle East	North Africa/Middle East
Jamaica	Caribbean	Latin America/Caribbean
Jordan	North Africa / Middle East	North Africa/Middle East
Kazakhstan	Asia, Central	Central Asia
Kenya	Sub-Saharan Africa, East	Sub-Saharan Africa
Kiribati	Oceania	East Asia/Pacific
Kuwait	North Africa / Middle East	North Africa/Middle East
Kyrgyzstan	Asia, Central	Central Asia
Lao People's Democratic Republic	Asia, Southeast	East Asia/Pacific
Lebanon	North Africa / Middle East	North Africa/Middle East
Lesotho	Sub-Saharan Africa, Southern	Sub-Saharan Africa
Liberia	Sub-Saharan Africa, West	Sub-Saharan Africa
Libyan Arab Jamahiriya	North Africa / Middle East	North Africa/Middle East
Madagascar	Sub-Saharan Africa, East	Sub-Saharan Africa
Malawi	Sub-Saharan Africa, East	Sub-Saharan Africa
Malaysia	Asia, Southeast	East Asia/Pacific
Maldives	Asia, Southeast	East Asia/Pacific
Mali	Sub-Saharan Africa, West	Sub-Saharan Africa
Marshall Islands	Oceania	East Asia/Pacific
Mauritania	Sub-Saharan Africa, West	Sub-Saharan Africa
Mauritius	Asia, Southeast	East Asia/Pacific
Mexico	Latin America, Central	Latin America/Caribbean
Micronesia (Federated States of)	Oceania	East Asia/Pacific

Mongolia	Asia, Central	Central Asia
Morocco	North Africa / Middle East	North Africa/Middle East
Mozambique	Sub-Saharan Africa, East	Sub-Saharan Africa
Myanmar	Asia, Southeast	East Asia/Pacific
Namibia	Sub-Saharan Africa, Southern	Sub-Saharan Africa
Nepal	Asia, South	South Asia
Nicaragua	Latin America, Central	Latin America/Caribbean
Niger	Sub-Saharan Africa, West	Sub-Saharan Africa
Nigeria	Sub-Saharan Africa, West	Sub-Saharan Africa
Oman	North Africa / Middle East	North Africa/Middle East
Pakistan	Asia, South	South Asia
Panama	Latin America, Central	Latin America/Caribbean
Papua New Guinea	Oceania	East Asia/Pacific
Paraguay	Latin America, Tropical	Latin America/Caribbean
Peru	Latin America, Andean	Latin America/Caribbean
Philippines	Asia, Southeast	East Asia/Pacific
Qatar	North Africa / Middle East	North Africa/Middle East
Rwanda	Sub-Saharan Africa, East	Sub-Saharan Africa
Samoa	Oceania	East Asia/Pacific
Sao Tome and Principe	Sub-Saharan Africa, West	Sub-Saharan Africa
Saudi Arabia	North Africa / Middle East	North Africa/Middle East
Senegal	Sub-Saharan Africa, West	Sub-Saharan Africa
Seychelles	Asia, Southeast	East Asia/Pacific
Sierra Leone	Sub-Saharan Africa, West	Sub-Saharan Africa
Solomon Islands	Oceania	East Asia/Pacific
Somalia	Sub-Saharan Africa, East	Sub-Saharan Africa
South Africa	Sub-Saharan Africa, Southern	Sub-Saharan Africa
Sri Lanka	Asia, Southeast	East Asia/Pacific
St. Lucia	Caribbean	Latin America/Caribbean
St. Vincent	Caribbean	Latin America/Caribbean
State of Palestine	North Africa / Middle East	North Africa / Middle East
Sudan	Sub-Saharan Africa, East	Sub-Saharan Africa
Suriname	Caribbean	Latin America/Caribbean
Swaziland	Sub-Saharan Africa, Southern	Sub-Saharan Africa
Syrian Arab Republic	North Africa / Middle East	North Africa/Middle East
Taiwan	Asia, East	East Asia/Pacific
Tajikistan	Asia, Central	Central Asia
Thailand	Asia, Southeast	East Asia/Pacific
Timore Leste	Asia, Southeast	East Asia/Pacific
Togo	Sub-Saharan Africa, West	Sub-Saharan Africa
Tonga	Oceania	East Asia/Pacific
Trinidad and Tobago	Caribbean	Latin America/Caribbean
Tunisia	North Africa / Middle East	North Africa/Middle East

Turkey	North Africa / Middle East	North Africa/Middle East
Turkmenistan	Asia, Central	Central Asia
Uganda	Sub-Saharan Africa, East	Sub-Saharan Africa
United Arab Emirates	North Africa / Middle East	North Africa/Middle East
United Republic of Tanzania	Sub-Saharan Africa, East	Sub-Saharan Africa
Uruguay	Latin America, Southern	Latin America/Caribbean
Uzbekistan	Asia, Central	Central Asia
Vanuatu	Oceania	East Asia/Pacific
Venezuela	Latin America, Central	Latin America/Caribbean
Viet Nam	Asia, Southeast	East Asia/Pacific
Yemen	North Africa / Middle East	North Africa/Middle East
Zambia	Sub-Saharan Africa, East	Sub-Saharan Africa
Zimbabwe	Sub-Saharan Africa, Southern	Sub-Saharan Africa

Appendix Table 2: Population attributable fraction (PAF in %) and number of stunting cases (in thousands) attributable to the joint impact of intimate partner violence, maternal depression, and low maternal education, assuming different scenarios of the percent of excess relative risk of IPV that is mediated through maternal depression, by region (95% confidence intervals in parentheses) (25% mediation was used for the main analysis; the results below indicate that different mediation scenarios do not show large differences at the global or regional levels)

Region	25% mediation		No mediation		50% mediation	
	PAF (%)	Number stunted	PAF (%)	Number stunted	PAF (%)	Number stunted
All developing countries	16.4 (9.9, 25.7)	7235 (4405, 11524)	17.4 (11.0, 26.6)	7666 (4857, 11943)	15.4 (8.8, 24.7)	6792 (3951, 11054)
East Asia and Pacific	12.1 (6.3, 21.2)	886 (458, 1542)	12.8 (7.0, 21.7)	933 (506, 1583)	11.5 (5.6, 20.6)	839 (403, 1500)
South Asia	16.8 (10.4, 25.7)	2802 (1687, 4461)	17.9 (11.6, 26.7)	2981 (1845, 4620)	15.7 (9.2, 24.8)	2619 (1505, 4297)
Central Asia	9.8 (2.7, 20.2)	44 (12, 91)	10.5 (3.5, 20.8)	47 (15, 94)	9.2 (1.9, 19.6)	41 (9, 88)
North Africa and Middle East	17.5 (9.2, 29.6)	453 (232, 767)	18.4 (10.1, 30.3)	476 (256, 786)	16.6 (8.1, 28.8)	429 (208, 748)
Sub-Saharan Africa	18.3 (11.7, 27.9)	2813 (1800, 4284)	19.4 (12.9, 28.8)	2978 (1975, 4436)	17.2 (10.6, 27)	2643 (1618, 4140)
Latin America and Caribbean	13.5 (7.0, 23.2)	237 (120, 405)	14.3 (7.9, 23.9)	251 (136, 417)	12.7 (6.0, 22.4)	222 (104, 392)

Appendix Table 3: Population attributable fraction (PAF in %) and number of stunting cases (in hundreds) attributable to each of 4 psychosocial risks and maternal depression, low maternal education, and intimate partner violence jointly, by country (95% confidence intervals in parentheses)

Country	Low maternal education		Maternal depression		Intimate partner violence		Orphanhood ^a		Joint	
	PAF (%)	Number stunted	PAF (%)	Number stunted	PAF (%)	Number stunted	PAF (%)	Number stunted	PAF (%)	Number stunted
Afghanistan	9.9 (9.4, 10.4)	630 (483, 786)	27.3 (-0.3, 54.0)	1731 (-16, 3509)	5.2 (3.8, 6.6)	327 (217, 453)			37.1 (13.2, 60.3)	2352 (815, 3971)
Algeria	4.6 (4.4, 4.9)	78 (49, 106)	10.3 (-0.1, 24.6)	174 (-1, 441)	4.4 (3.3, 5.6)	74 (42, 110)			17.3 (7.9, 30.7)	292 (116, 565)
Angola	7.0 (6.7, 7.2)	259 (170, 351)	7.5 (-0.1, 18.2)	280 (-2, 724)	7.9 (5.8, 10.2)	292 (180, 428)	0.02 (0.01, 0.03)	1 (0, 1)	19.1 (12.5, 28.5)	712 (405, 1173)
Antigua and Barbuda	2.6 (2.4, 2.7)	0 (0, 0)	10.1 (-0.1, 24.6)	0 (0, 1)	3.4 (2.4, 4.5)	0 (0, 0)			14.6 (5.1, 28.0)	0 (0, 1)
Argentina	2.9 (2.7, 3.1)	17 (8, 27)	7.7 (-0.1, 19.1)	45 (0, 122)	3.0 (1.5, 4.7)	18 (7, 33)			12.5 (5.4, 23.1)	74 (25, 152)
Armenia	0.4 (0.3, 0.4)	0 (0, 0)	8.3 (-0.1, 20.5)	6 (0, 14)	2.9 (1.9, 4.0)	2 (1, 3)			10.6 (2.6, 22.4)	8 (2, 16)
Azerbaijan	0.7 (0.6, 0.7)	3 (2, 4)	6.6 (0.0, 16.0)	25 (0, 65)	2.9 (1.9, 4.1)	11 (6, 18)			9.2 (3.2, 18.5)	35 (9, 75)
Bahamas	0.3 (0.3, 0.4)	0 (0, 0)	7.9 (0.0, 19.2)	1 (0, 2)	3.4 (2.4, 4.6)	0 (0, 0)			10.6 (3.0, 21.7)	1 (0, 2)
Bahrain	1.4 (1.3, 1.4)	0 (0, 0)	13.2 (-0.1, 29.7)	3 (0, 7)	4.4 (3.3, 5.6)	1 (0, 2)			17.2 (4.6, 33.2)	4 (1, 8)
Bangladesh	5.8 (5.6, 6.1)	829 (647, 1012)	5.2 (0.0, 13.5)	737 (-5, 1853)	5.1 (3.8, 6.4)	732 (502, 979)			14.2 (9.5, 21.6)	2020 (1285, 3108)
Barbados	0.4 (0.4, 0.4)	0 (0, 0)	8.1 (-0.1, 20.3)	0 (0, 1)	3.4 (2.3, 4.5)	0 (0, 0)			10.8 (3.1, 22.4)	1 (0, 2)
Belize	4.8 (4.5, 5.1)	1 (0, 1)	8.1 (-0.1, 19.5)	1 (0, 3)	3.4 (2.4, 4.5)	1 (0, 1)			14.8 (7.3, 25.0)	2 (1, 4)
Benin	8.9 (8.5, 9.3)	137 (104, 174)	5.6 (0.0, 14.7)	87 (-1, 225)	5.2 (3.6, 6.7)	80 (51, 116)	0.02 (0.01, 0.03)	0 (0, 0)	17.4 (12.3, 25.3)	268 (171, 410)
Bhutan	7.5 (7.1, 7.8)	4 (3, 5)	6.1 (0.0, 15.4)	3 (0, 8)	5.2 (3.9, 6.5)	3 (2, 4)			16.5 (11.1, 25.0)	9 (5, 13)
Bolivia	2.6 (2.5, 2.8)	21 (17, 25)	5.9 (0.0, 15.0)	48 (0, 124)	5.0 (3.8, 6.4)	41 (28, 54)			11.8 (6.3, 20.5)	96 (49, 168)

Botswana	0.7 (0.7, 0.8)	1 (1, 2)	10.8 (-0.1, 25.4)	18 (0, 46)	3.7 (2.7, 4.8)	6 (4, 9)	0.03 (0.02, 0.05)	0 (0, 0)	13.9 (3.6, 27.8)	24 (6, 51)
Brazil	3.7 (3.5, 3.9)	107 (65, 147)	8.2 (-0.1, 20.3)	236 (-1, 608)	3.5 (2.4, 4.7)	100 (55, 155)			13.9 (6.3, 25.1)	401 (162, 778)
Burkina Faso	9.9 (9.4, 10.4)	304 (256, 352)	6.4 (0.0, 16.2)	198 (-1, 501)	5.2 (3.6, 6.8)	159 (107, 216)	0.03 (0.01, 0.05)	1 (0, 1)	19.0 (13.4, 27.4)	585 (388, 865)
Burundi	9.7 (9.3, 10.1)	258 (230, 289)	8.8 (-0.1, 21.7)	234 (-2, 581)	4.8 (3.6, 6.0)	127 (94, 164)	0.03 (0.01, 0.06)	1 (0, 2)	20.7 (13.0, 31.8)	549 (336, 850)
Cambodia	8.5 (8.1, 8.9)	132 (113, 151)	7.3 (0.0, 18.4)	113 (-1, 282)	3.5 (2.5, 4.5)	55 (38, 73)			17.4 (11.0, 27.1)	271 (166, 422)
Cameroon	7.0 (6.6, 7.4)	228 (187, 277)	6.5 (-0.1, 16.3)	212 (-2, 530)	5.1 (3.7, 6.7)	167 (119, 231)	0.03 (0.01, 0.05)	1 (0, 2)	16.4 (10.6, 25.4)	536 (329, 838)
Cape Verde	8.6 (8.2, 9.0)	2 (1, 3)	7.6 (-0.1, 18.2)	2 (0, 5)	5.2 (3.8, 6.8)	1 (1, 2)	0.0 (0.0, 0.01)	0 (0, 0)	18.9 (12.2, 28.3)	5 (2, 8)
Central African Republic	9.6 (9.2, 10.0)	73 (56, 91)	8.5 (-0.1, 21.2)	66 (-1, 167)	7.9 (5.6, 10.1)	61 (39, 83)	0.04 (0.02, 0.07)	0 (0, 1)	22.2 (15.2, 32.6)	171 (105, 264)
Chad	10.0 (9.6, 10.4)	292 (201, 385)	7.7 (0.0, 18.4)	225 (-1, 561)	5.1 (3.6, 6.7)	150 (90, 227)	0.03 (0.01, 0.05)	1 (0, 2)	20.2 (13.5, 29.4)	590 (337, 939)
Chile	1.6 (1.5, 1.7)	1 (1, 1)	6.0 (0.0, 15.2)	3 (0, 8)	3.0 (1.7, 4.5)	2 (1, 3)			9.6 (4.0, 18.6)	5 (2, 11)
China	2.2 (2.1, 2.4)	642 (423, 865)	4.6 (0.0, 12.1)	1319 (-8, 3457)	2.1 (1.1, 3.2)	596 (278, 1012)			8.2 (3.8, 15.3)	2351 (948, 4550)
Colombia	3.6 (3.4, 3.9)	46 (37, 56)	9.3 (-0.1, 22.3)	119 (-1, 307)	3.7 (2.7, 4.8)	47 (32, 65)			15.0 (6.5, 27.3)	192 (79, 371)
Comoros	6.9 (6.6, 7.2)	7 (5, 9)	9.3 (-0.1, 22.5)	9 (0, 23)	4.8 (3.6, 6.1)	5 (3, 7)	0.02 (0.01, 0.03)	0 (0, 0)	18.6 (10.5, 30.5)	18 (9, 32)
Congo	5.1 (4.8, 5.3)	24 (15, 32)	9.5 (-0.1, 22.8)	44 (0, 113)	7.9 (5.7, 10.2)	36 (21, 54)	0.02 (0.01, 0.03)	0 (0, 0)	19.3 (10.8, 31.0)	89 (43, 160)
Costa Rica	3.1 (2.9, 3.4)	2 (1, 3)	7.2 (0.0, 17.8)	5 (0, 13)	3.7 (2.7, 4.8)	2 (1, 4)			12.6 (5.9, 22.8)	8 (3, 17)
Cote d'Ivoire	9.0 (8.6, 9.4)	301 (221, 378)	7.9 (-0.1, 19.4)	263 (-2, 664)	5.2 (3.6, 6.7)	173 (110, 247)	0.03 (0.01, 0.05)	1 (0, 2)	19.4 (12.6, 29.3)	650 (375, 1042)
Cuba	0.5 (0.5, 0.5)	1 (0, 1)	9.0 (-0.1, 22.2)	11 (0, 28)	3.4 (2.4, 4.6)	4 (1, 7)			11.8 (3.0, 24.4)	14 (3, 32)
Democratic People's Republic of Korea	1.2 (1.1, 1.3)	20 (14, 25)	4.1 (0.0, 10.3)	65 (0, 172)	2.1 (1.1, 3.2)	33 (16, 54)			6.7 (2.7, 12.7)	107 (42, 217)

Democratic Republic of the Congo	9.2 (8.8, 9.6)	1268 (1087, 1471)	8.9 (-0.1, 21.6)	1222 (-8, 2934)	7.9 (5.7, 10.1)	1084 (747, 1441)	0.03 (0.01, 0.05)	4 (1, 7)	22.2 (14.6, 32.9)	3064 (1892, 4551)
Djibouti	8.3 (8.0, 8.7)	5 (3, 7)	10.2 (-0.1, 24.8)	6 (0, 15)	4.8 (3.6, 6.1)	3 (2, 4)			20.7 (11.8, 33.7)	13 (6, 21)
Dominica	2.6 (2.4, 2.7)	0 (0, 0)	8.2 (0.0, 20.0)	0 (0, 0)	3.4 (2.4, 4.5)	0 (0, 0)			12.8 (5.1, 23.9)	0 (0, 0)
Dominican Republic	3.7 (3.5, 4.0)	9 (6, 12)	6.8 (0.0, 17.3)	16 (0, 41)	3.4 (2.3, 4.6)	8 (5, 12)			12.6 (6.3, 22.4)	30 (13, 56)
Ecuador	4.4 (4.1, 4.6)	38 (26, 50)	6.6 (0.0, 16.5)	57 (0, 147)	5.0 (3.8, 6.3)	44 (27, 63)			14.0 (8.1, 23.3)	122 (62, 213)
Egypt	4.2 (4.0, 4.4)	218 (147, 287)	8.3 (-0.1, 20.3)	433 (-2, 1146)	4.4 (3.3, 5.6)	230 (146, 337)			15.0 (7.5, 26.3)	786 (349, 1484)
El Salvador	4.8 (4.5, 5.1)	12 (9, 14)	7.8 (-0.1, 19.3)	19 (0, 47)	3.7 (2.7, 4.7)	9 (6, 13)			14.7 (7.6, 25.4)	37 (18, 62)
Equatorial Guinea	7.0 (6.7, 7.2)	6 (4, 7)	10.4 (-0.1, 24.6)	9 (0, 21)	7.9 (5.8, 10.1)	6 (4, 9)	0.04 (0.02, 0.06)	0 (0, 0)	21.7 (12.8, 34.0)	18 (9, 31)
Eritrea	7.1 (6.8, 7.4)	73 (52, 94)	9.0 (-0.1, 22.3)	93 (-1, 229)	4.8 (3.5, 6.0)	49 (31, 69)	0.01 (0.01, 0.02)	0 (0, 0)	18.6 (10.6, 30.6)	191 (101, 325)
Ethiopia	10.0 (9.5, 10.5)	1804 (1559, 2062)	5.6 (0.0, 14.0)	1009 (-6, 2558)	4.8 (3.6, 6.1)	867 (636, 1132)	0.02 (0.01, 0.03)	3 (1, 6)	18.1 (13.2, 25.4)	3271 (2323, 4565)
Fiji	1.7 (1.6, 1.8)	1 (0, 1)	5.5 (0.0, 13.8)	2 (0, 7)	4.4 (2.9, 6.1)	2 (0, 3)			10.1 (4.8, 18.0)	4 (1, 9)
Gabon	3.7 (3.5, 3.9)	4 (2, 6)	10.9 (-0.1, 25.4)	13 (0, 33)	7.9 (5.7, 10.1)	9 (5, 14)	0.02 (0.01, 0.03)	0 (0, 0)	19.3 (9.4, 32.7)	22 (9, 42)
Gambia	8.3 (7.9, 8.8)	23 (16, 28)	8.1 (0.0, 20.0)	22 (0, 55)	5.1 (3.6, 6.8)	14 (9, 20)	0.02 (0.01, 0.04)	0 (0, 0)	19.0 (11.8, 29.2)	52 (29, 85)
Georgia	0.7 (0.6, 0.7)	1 (0, 1)	7.5 (0.0, 18.5)	6 (0, 15)	2.9 (1.9, 4.0)	2 (1, 4)			10.1 (2.9, 20.7)	8 (2, 18)
Ghana	5.0 (4.8, 5.2)	127 (100, 154)	6.5 (0.0, 16.0)	164 (-1, 422)	5.2 (3.7, 6.7)	131 (88, 183)	0.02 (0.01, 0.03)	0 (0, 1)	14.6 (8.8, 23.2)	372 (214, 627)
Grenada	2.6 (2.4, 2.7)	0 (0, 0)	8.1 (0.0, 19.9)	0 (0, 1)	3.4 (2.3, 4.5)	0 (0, 0)			12.8 (5.2, 23.7)	0 (0, 1)
Guatemala	7.6 (7.2, 8.0)	168 (141, 197)	7.9 (-0.1, 19.7)	173 (-1, 423)	3.7 (2.7, 4.8)	82 (57, 111)			17.3 (10.3, 27.9)	381 (219, 603)
Guinea	9.9 (9.5, 10.4)	204 (160, 249)	6.2 (0.0, 15.8)	127 (-1, 315)	5.2 (3.7, 6.9)	106 (72, 148)	0.03 (0.01, 0.04)	1 (0, 1)	18.9 (13.5, 27.2)	387 (259, 561)

Guinea-Bissau	8.6 (8.2, 9.0)	24 (17, 31)	5.8 (0.0, 14.2)	16 (0, 41)	5.2 (3.7, 6.8)	14 (9, 21)	0.03 (0.01, 0.06)	0 (0, 0)	17.3 (12.1, 24.7)	48 (30, 73)
Guyana	2.6 (2.4, 2.7)	1 (1, 1)	9.2 (-0.1, 22.6)	2 (0, 6)	3.4 (2.4, 4.6)	1 (1, 1)			13.8 (5.2, 26.6)	4 (1, 7)
Haiti	7.8 (7.4, 8.1)	62 (45, 80)	7.2 (0.0, 17.7)	58 (0, 147)	3.4 (2.3, 4.7)	27 (17, 40)			16.6 (10.0, 26.1)	133 (73, 222)
Honduras	5.0 (4.6, 5.3)	27 (20, 35)	12.6 (-0.1, 29.9)	69 (0, 168)	3.7 (2.7, 4.8)	20 (13, 29)			19.3 (7.7, 35.1)	106 (41, 198)
India	6.4 (6.2, 6.7)	7597 (5420, 9836)	6.4 (0.0, 15.7)	7586 (-48, 19463)	5.1 (3.8, 6.5)	6074 (3884, 8557)	0.02 (0.0, 0.03)	21 (5, 42)	15.9 (10.2, 24.2)	18735 (10934, 30900)
Indonesia	6.8 (6.4, 7.1)	1250 (966, 1539)	7.8 (-0.1, 18.8)	1435 (-8, 3664)	3.5 (2.5, 4.5)	648 (438, 901)			16.3 (9.3, 26.4)	3010 (1651, 5106)
Iran (Islamic Republic of)	3.0 (2.9, 3.1)	76 (41, 116)	10.2 (-0.1, 24.8)	261 (-2, 696)	4.4 (3.3, 5.6)	112 (56, 187)			15.8 (6.4, 29.3)	403 (138, 841)
Iraq	7.1 (6.8, 7.4)	218 (147, 292)	6.7 (0.0, 16.9)	204 (-2, 513)	4.4 (3.2, 5.6)	136 (83, 193)			16.2 (10.2, 25.2)	497 (275, 809)
Jamaica	1.3 (1.2, 1.3)	0 (0, 0)	7.3 (-0.1, 18.4)	1 (0, 3)	3.4 (2.3, 4.6)	1 (0, 1)			10.8 (4.2, 21.6)	2 (1, 4)
Jordan	2.5 (2.4, 2.6)	5 (4, 7)	10.2 (-0.1, 24.3)	21 (0, 52)	4.4 (3.2, 5.6)	9 (6, 13)			15.4 (5.9, 28.5)	32 (11, 61)
Kazakhstan	0.5 (0.5, 0.6)	3 (2, 4)	6.5 (0.0, 16.5)	36 (0, 98)	2.9 (1.9, 4.1)	16 (8, 26)			9.0 (2.8, 18.6)	50 (15, 113)
Kenya	6.7 (6.3, 7.0)	398 (318, 482)	7.5 (-0.1, 19.2)	449 (-3, 1101)	4.8 (3.6, 6.0)	286 (203, 383)	0.02 (0.01, 0.04)	1 (1, 2)	16.9 (10.2, 27.1)	1005 (576, 1625)
Kiribati	4.5 (4.2, 4.7)	0 (0, 1)	8.3 (-0.1, 20.3)	1 (0, 2)	4.4 (2.8, 6.2)	0 (0, 1)			15.3 (7.7, 26.6)	1 (0, 3)
Kuwait	4.1 (3.8, 4.3)	1 (0, 1)	10.5 (-0.1, 25.3)	1 (0, 3)	4.4 (3.2, 5.6)	1 (0, 1)			17.1 (7.6, 30.8)	2 (1, 4)
Kyrgyzstan	2.3 (2.1, 2.5)	9 (5, 12)	7.2 (-0.1, 18.8)	27 (0, 74)	2.9 (1.8, 4.0)	11 (5, 18)			11.4 (4.5, 22.1)	43 (13, 91)
Lao People's Democratic Republic	6.7 (6.4, 7.0)	55 (41, 69)	8.4 (-0.1, 20.4)	69 (0, 173)	3.5 (2.6, 4.5)	29 (19, 40)			16.8 (9.2, 27.4)	138 (69, 234)
Lebanon	4.5 (4.3, 4.7)	4 (1, 6)	8.1 (-0.1, 19.6)	7 (0, 18)	4.4 (3.2, 5.6)	4 (1, 6)			15.2 (7.7, 25.7)	12 (4, 27)
Lesotho	6.2 (5.7, 6.6)	15 (12, 18)	9.8 (-0.1, 23.7)	24 (0, 59)	3.7 (2.7, 4.9)	9 (6, 13)	0.06 (0.03, 0.1)	0 (0, 0)	17.7 (8.8, 30.4)	44 (21, 77)

Liberia	8.3 (7.9, 8.6)	51 (39, 63)	7.1 (0.0, 17.7)	44 (0, 111)	5.2 (3.6, 6.9)	32 (21, 45)	0.02 (0.01, 0.03)	0 (0, 0)	18.1 (11.8, 27.3)	112 (66, 176)
Libyan Arab Jamahiriya	2.6 (2.5, 2.7)	6 (4, 9)	13.5 (-0.1, 30.2)	33 (0, 78)	4.4 (3.3, 5.6)	11 (6, 17)			18.6 (6.0, 34.3)	45 (14, 91)
Madagascar	6.5 (6.1, 6.8)	253 (209, 301)	7.5 (-0.1, 18.3)	295 (-2, 717)	4.8 (3.6, 6.1)	188 (135, 252)	0.01 (0.0, 0.02)	0 (0, 1)	16.7 (10.0, 26.4)	652 (365, 1052)
Malawi	8.2 (7.7, 8.6)	266 (233, 299)	8.3 (-0.1, 20.8)	271 (-2, 650)	4.8 (3.6, 6.0)	156 (113, 201)	0.03 (0.02, 0.05)	1 (0, 2)	18.9 (11.5, 30.0)	614 (370, 954)
Malaysia	1.6 (1.5, 1.7)	13 (8, 19)	7.8 (-0.1, 18.2)	65 (0, 156)	3.5 (2.6, 4.5)	30 (16, 45)			11.7 (4.4, 21.8)	97 (32, 195)
Maldives	4.7 (4.4, 4.9)	1 (0, 1)	7.8 (-0.1, 19.0)	1 (0, 3)	3.5 (2.6, 4.5)	1 (0, 1)			14.4 (7.3, 24.8)	2 (1, 4)
Mali	10.0 (9.6, 10.5)	312 (241, 388)	9.4 (-0.1, 22.8)	290 (-2, 708)	5.2 (3.7, 6.8)	161 (106, 225)	0.03 (0.01, 0.05)	1 (0, 2)	21.7 (13.7, 33.0)	672 (401, 1068)
Marshall Islands	4.5 (4.2, 4.7)	0 (0, 0)	9.9 (-0.1, 23.4)	0 (0, 1)	4.4 (2.9, 6.2)	0 (0, 0)			16.8 (7.6, 29.0)	0 (0, 1)
Mauritania	8.9 (8.5, 9.3)	36 (26, 46)	7.4 (0.0, 18.9)	30 (0, 78)	5.2 (3.7, 6.9)	21 (13, 31)	0.02 (0.01, 0.04)	0 (0, 0)	19.0 (12.5, 29.1)	78 (44, 125)
Mauritius	3.5 (3.2, 3.7)	1 (0, 1)	8.5 (-0.1, 21.5)	2 (0, 6)	3.5 (2.6, 4.5)	1 (0, 2)	0.0 (0.0, 0.01)	0 (0, 0)	14.0 (6.1, 26.1)	4 (1, 8)
Mexico	2.5 (2.3, 2.6)	97 (69, 127)	4.4 (0.0, 11.4)	173 (-1, 454)	3.7 (2.7, 4.7)	145 (93, 210)			9.4 (5.3, 16.1)	369 (187, 640)
Micronesia (Federated States of)	4.5 (4.2, 4.7)	0 (0, 0)	7.1 (0.0, 17.9)	0 (0, 1)	4.4 (2.7, 6.0)	0 (0, 0)			14.2 (7.7, 23.9)	1 (0, 2)
Mongolia	1.4 (1.3, 1.5)	2 (2, 3)	7.3 (0.0, 17.6)	12 (0, 29)	2.9 (1.8, 4.0)	5 (3, 7)			10.5 (3.6, 20.8)	17 (6, 34)
Morocco	7.7 (7.4, 8.0)	159 (92, 223)	10.0 (-0.1, 24.1)	209 (-2, 527)	4.4 (3.2, 5.6)	91 (48, 139)			19.7 (11.0, 32.4)	409 (168, 752)
Mozambique	10.7 (10.2, 11.2)	503 (406, 595)	6.9 (0.0, 17.1)	324 (-2, 820)	4.8 (3.6, 6.0)	226 (159, 304)	0.04 (0.02, 0.07)	2 (1, 3)	19.8 (14.0, 28.4)	935 (614, 1408)
Myanmar	6.7 (6.3, 7.1)	303 (219, 395)	7.2 (0.0, 18.2)	322 (-2, 813)	3.5 (2.6, 4.5)	158 (105, 226)			15.7 (9.2, 25.6)	708 (382, 1190)
Namibia	6.4 (6.1, 6.7)	15 (11, 19)	7.6 (0.0, 18.8)	18 (0, 45)	3.7 (2.6, 4.8)	9 (6, 13)	0.02 (0.01, 0.04)	0 (0, 0)	15.9 (9.1, 25.8)	38 (20, 64)
Nepal	7.5 (7.2, 7.9)	255 (217, 295)	5.2 (0.0, 13.6)	178 (-1, 470)	5.2 (3.8, 6.5)	174 (125, 228)			15.8 (11.2, 23.2)	536 (364, 801)

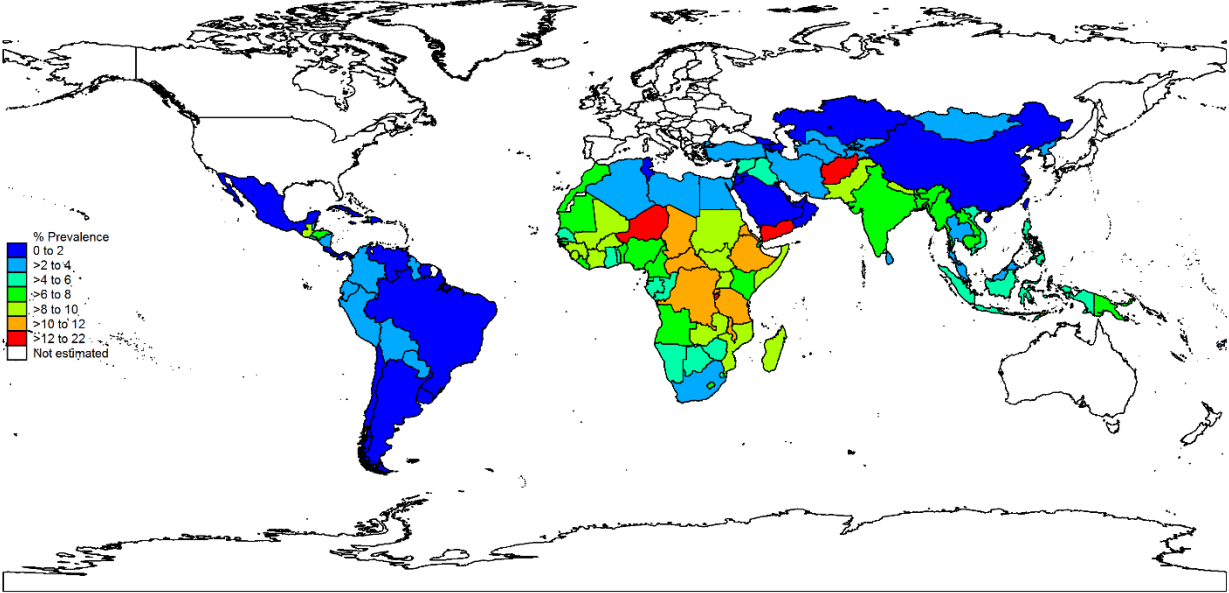
Nicaragua	5.7 (5.4, 5.9)	18 (14, 22)	7.6 (-0.1, 18.5)	25 (0, 61)	3.7 (2.7, 4.8)	12 (8, 17)			15.3 (8.4, 25.4)	49 (26, 85)
Niger	10.9 (10.3, 11.4)	594 (470, 715)	6.7 (0.0, 16.7)	364 (-3, 905)	5.2 (3.6, 6.8)	282 (188, 394)	0.03 (0.01, 0.04)	1 (1, 2)	20.1 (14.2, 28.7)	1097 (733, 1615)
Nigeria	5.6 (5.4, 5.9)	1560 (1244, 1878)	5.7 (0.0, 14.4)	1589 (-11, 4108)	5.2 (3.7, 6.9)	1440 (980, 1990)	0.04 (0.02, 0.06)	10 (4, 17)	14.5 (9.5, 22.4)	4034 (2455, 6399)
Oman	4.5 (4.3, 4.7)	4 (3, 5)	8.2 (-0.1, 20.3)	7 (0, 18)	4.4 (3.3, 5.6)	4 (2, 5)			15.2 (7.9, 26.5)	13 (6, 24)
Pakistan	7.5 (7.2, 7.9)	1862 (1519, 2224)	7.4 (0.0, 18.2)	1819 (-11, 4417)	5.2 (3.8, 6.5)	1273 (886, 1683)			17.7 (11.2, 27.3)	4373 (2646, 6771)
Panama	2.5 (2.3, 2.7)	3 (1, 4)	6.9 (0.0, 17.3)	7 (0, 18)	3.7 (2.7, 4.7)	4 (2, 6)			11.8 (5.3, 21.6)	12 (4, 23)
Papua New Guinea	9.7 (9.3, 10.1)	79 (51, 107)	7.5 (-0.1, 18.7)	61 (0, 157)	4.4 (2.8, 6.2)	36 (19, 57)			19.3 (12.8, 28.9)	157 (89, 257)
Paraguay	3.5 (3.3, 3.8)	7 (4, 11)	9.3 (-0.1, 22.3)	20 (0, 52)	3.4 (2.3, 4.7)	7 (3, 12)			14.8 (6.2, 26.8)	31 (10, 63)
Peru	2.5 (2.3, 2.6)	37 (31, 42)	7.4 (-0.1, 18.2)	109 (-1, 269)	5.0 (3.8, 6.3)	75 (54, 97)			13.1 (6.4, 23.1)	194 (93, 349)
Philippines	1.8 (1.7, 2.0)	152 (126, 178)	7.8 (-0.1, 18.8)	639 (-5, 1501)	3.5 (2.6, 4.5)	289 (202, 392)			11.9 (4.5, 22.4)	977 (366, 1790)
Qatar	3.4 (3.3, 3.6)	1 (0, 1)	13.4 (-0.1, 30.9)	2 (0, 7)	4.4 (3.3, 5.6)	1 (0, 2)			19.2 (6.8, 35.7)	4 (0, 9)
Rwanda	9.5 (9.1, 9.9)	171 (146, 197)	10.4 (-0.1, 25.1)	188 (-1, 437)	4.8 (3.6, 6.1)	87 (62, 115)	0.03 (0.01, 0.04)	0 (0, 1)	21.9 (12.9, 34.8)	395 (229, 612)
Samoa	4.5 (4.2, 4.7)	0 (0, 1)	6.7 (0.0, 16.9)	1 (0, 1)	4.4 (2.8, 6.2)	0 (0, 1)			13.8 (7.5, 23.4)	1 (0, 2)
Sao Tome and Principe	8.6 (8.2, 9.0)	1 (1, 2)	8.8 (-0.1, 22.0)	1 (0, 3)	5.2 (3.7, 6.7)	1 (1, 1)	0.02 (0.01, 0.03)	0 (0, 0)	19.9 (12.4, 31.4)	3 (2, 5)
Saudi Arabia	3.2 (3.0, 3.3)	25 (15, 36)	9.3 (-0.1, 22.6)	74 (0, 193)	4.4 (3.2, 5.6)	35 (19, 54)			15.1 (6.6, 27.4)	120 (47, 241)
Senegal	8.4 (8.1, 8.8)	129 (104, 154)	6.5 (0.0, 16.5)	100 (-1, 250)	5.2 (3.7, 6.8)	79 (54, 108)	0.02 (0.01, 0.03)	0 (0, 1)	17.7 (12.0, 26.4)	272 (174, 411)
Seychelles	4.8 (4.5, 5.1)	0 (0, 0)	6.2 (0.0, 15.5)	0 (0, 0)	3.5 (2.6, 4.5)	0 (0, 0)			13.1 (7.4, 21.7)	0 (0, 1)
Sierra Leone	9.3 (8.8, 9.7)	92 (71, 114)	8.6 (-0.1, 21.4)	85 (-1, 213)	5.2 (3.7, 6.7)	51 (33, 72)	0.02 (0.01, 0.04)	0 (0, 0)	20.3 (12.9, 31.3)	201 (114, 320)

Solomon Islands	4.5 (4.2, 4.7)	3 (2, 3)	5.4 (0.0, 14.0)	3 (0, 8)	4.4 (2.7, 6.1)	3 (2, 4)			12.6 (7.7, 20.4)	7 (4, 12)
Somalia	8.3 (8.0, 8.7)	178 (124, 227)	9.5 (-0.1, 22.8)	201 (-1, 490)	4.8 (3.6, 6.1)	103 (65, 144)			20.0 (11.9, 31.8)	427 (231, 706)
South Africa	1.9 (1.8, 2.0)	55 (42, 68)	6.7 (0.0, 16.7)	191 (-1, 480)	3.7 (2.7, 4.8)	105 (72, 145)	0.06 (0.03, 0.09)	2 (1, 3)	11.1 (4.8, 20.3)	315 (132, 601)
Sri Lanka	1.3 (1.2, 1.4)	9 (7, 11)	7.3 (-0.1, 18.4)	50 (0, 126)	3.5 (2.6, 4.5)	24 (17, 33)			10.9 (4.0, 21.5)	75 (27, 148)
St. Lucia	2.6 (2.4, 2.7)	0 (0, 0)	6.7 (0.0, 17.0)	0 (0, 1)	3.4 (2.3, 4.5)	0 (0, 0)			11.5 (5.2, 21.4)	1 (0, 2)
St. Vincent	2.6 (2.4, 2.7)	0 (0, 0)	8.2 (-0.1, 20.3)	0 (0, 1)	3.4 (2.4, 4.5)	0 (0, 0)			12.8 (5.1, 24.1)	0 (0, 1)
State of Palestine	4.5 (4.3, 4.7)	9 (6, 12)	10.2 (-0.1, 24.3)	20 (0, 49)	4.4 (3.3, 5.6)	9 (5, 13)			17.2 (7.9, 30.1)	33 (14, 63)
Sudan	9.4 (9.0, 9.8)	477 (381, 571)	12.2 (-0.1, 28.1)	625 (-4, 1462)	4.8 (3.6, 6.1)	246 (176, 325)			23.4 (12.8, 37.2)	1191 (624, 1955)
Suriname	2.6 (2.4, 2.7)	0 (0, 0)	8.2 (-0.1, 19.9)	1 (0, 2)	3.4 (2.4, 4.6)	0 (0, 1)			12.8 (5.1, 23.8)	2 (1, 3)
Swaziland	4.1 (3.8, 4.4)	6 (5, 7)	8.3 (-0.1, 20.3)	12 (0, 30)	3.7 (2.7, 4.8)	5 (4, 7)	0.05 (0.03, 0.09)	0 (0, 0)	14.6 (6.9, 25.7)	21 (10, 38)
Syrian Arab Republic	6.6 (6.2, 7.0)	101 (76, 127)	9.4 (-0.1, 22.3)	143 (-1, 359)	4.4 (3.2, 5.6)	67 (45, 93)			18.3 (9.7, 29.8)	278 (143, 486)
Taiwan	0.2 (0.2, 0.2)	1 (0, 1)	4.0 (0.0, 10.5)	17 (0, 51)	2.1 (1.0, 3.2)	9 (2, 17)			5.7 (1.8, 11.9)	24 (4, 59)
Tajikistan	0.1 (0.1, 0.1)	1 (1, 1)	6.8 (0.0, 16.9)	68 (0, 169)	2.9 (1.8, 4.1)	29 (16, 43)			8.9 (2.3, 18.8)	89 (22, 191)
Thailand	5.0 (4.8, 5.3)	58 (39, 76)	8.4 (-0.1, 20.2)	95 (-1, 239)	3.5 (2.6, 4.5)	40 (24, 58)			15.3 (7.6, 26.3)	175 (79, 315)
Timore Leste	4.8 (4.5, 5.1)	12 (9, 14)	9.2 (-0.1, 22.4)	23 (0, 56)	3.5 (2.6, 4.5)	9 (6, 11)			15.9 (7.4, 28.1)	39 (17, 71)
Togo	7.8 (7.5, 8.1)	65 (54, 75)	6.6 (0.0, 17.0)	55 (0, 138)	5.1 (3.7, 6.8)	42 (29, 59)	0.02 (0.01, 0.04)	0 (0, 0)	17.3 (11.5, 26.2)	143 (91, 217)
Tonga	1.6 (1.4, 1.7)	0 (0, 0)	6.7 (-0.1, 16.7)	0 (0, 1)	4.4 (2.8, 6.2)	0 (0, 0)			11.2 (4.9, 20.7)	1 (0, 1)
Trinidad and Tobago	1.1 (1.0, 1.1)	0 (0, 0)	8.8 (-0.1, 21.2)	2 (0, 5)	3.4 (2.4, 4.5)	1 (0, 1)			12.1 (3.7, 23.9)	2 (0, 6)
Tunisia	5.0 (4.7, 5.2)	9 (5, 14)	10.2 (-0.1, 24.4)	19 (0, 50)	4.4 (3.3, 5.7)	8 (4, 13)			17.5 (8.2, 30.5)	33 (12, 65)

Turkey	5.1 (4.9, 5.4)	137 (77, 196)	10.1 (-0.1, 24.1)	269 (-1, 676)	4.4 (3.2, 5.6)	117 (63, 179)			17.6 (8.5, 30.3)	468 (194, 890)
Turkmenistan	0.1 (0.1, 0.1)	0 (0, 0)	9.1 (-0.1, 21.5)	23 (0, 62)	2.9 (1.8, 4.1)	7 (3, 12)			11.2 (2.3, 23.4)	29 (5, 68)
Uganda	8.4 (7.9, 8.9)	586 (443, 732)	9.1 (-0.1, 22.5)	635 (-5, 1559)	4.8 (3.6, 6.0)	335 (227, 466)	0.04 (0.02, 0.06)	2 (1, 4)	19.8 (11.9, 31.3)	1379 (756, 2249)
United Arab Emirates	2.0 (1.9, 2.1)	2 (0, 3)	11.3 (-0.1, 27.3)	10 (0, 29)	4.4 (3.3, 5.7)	4 (1, 8)			16.0 (5.2, 31.2)	15 (1, 35)
United Republic of Tanzania	8.4 (7.9, 8.9)	858 (733, 989)	9.2 (-0.1, 22.6)	942 (-8, 2308)	4.8 (3.6, 6.1)	490 (350, 632)	0.03 (0.01, 0.05)	3 (1, 5)	19.9 (11.8, 31.6)	2029 (1152, 3229)
Uruguay	3.3 (3.0, 3.5)	1 (0, 3)	7.1 (0.0, 18.5)	3 (0, 9)	3.0 (1.6, 4.6)	1 (0, 3)			12.2 (5.4, 22.9)	5 (1, 12)
Uzbekistan	0.0 (0.0, 0.0)	1 (0, 1)	8.1 (-0.1, 19.6)	133 (-1, 324)	2.9 (1.9, 4.0)	48 (27, 73)			10.1 (2.4, 21.2)	166 (34, 355)
Vanuatu	4.5 (4.2, 4.7)	1 (1, 1)	6.7 (0.0, 16.5)	1 (0, 4)	4.4 (2.8, 6.1)	1 (1, 1)			13.9 (7.8, 22.8)	3 (1, 5)
Venezuela	5.3 (5.0, 5.5)	32 (6, 58)	7.7 (-0.1, 18.8)	46 (-2, 139)	3.7 (2.6, 4.8)	22 (4, 44)			15.0 (8.0, 25.0)	91 (16, 198)
Viet Nam	5.5 (5.1, 5.9)	284 (236, 341)	6.2 (0.0, 15.9)	321 (-2, 812)	3.5 (2.6, 4.5)	182 (129, 244)			13.8 (8.1, 22.6)	709 (405, 1154)
Yemen	9.1 (8.7, 9.6)	464 (356, 583)	10.3 (-0.1, 24.4)	525 (-4, 1254)	4.4 (3.2, 5.6)	226 (150, 320)			21.2 (12.2, 33.8)	1080 (584, 1778)
Zambia	6.5 (6.2, 6.9)	210 (172, 248)	8.3 (-0.1, 20.6)	266 (-2, 654)	4.8 (3.6, 6.1)	154 (108, 204)	0.04 (0.01, 0.07)	1 (0, 2)	17.4 (10.0, 28.5)	559 (313, 918)
Zimbabwe	3.8 (3.5, 4.0)	69 (58, 80)	9.1 (-0.1, 21.8)	166 (-1, 395)	3.7 (2.7, 4.9)	68 (48, 93)	0.03 (0.02, 0.05)	1 (0, 1)	15.0 (6.6, 27.0)	274 (119, 490)

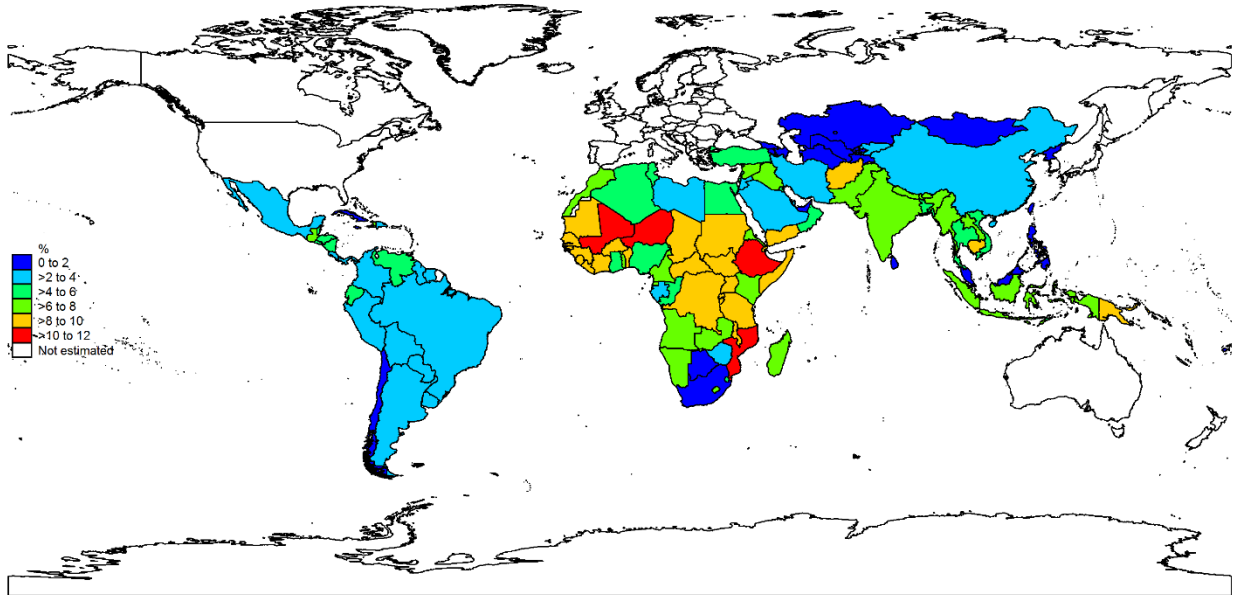
^aOnly estimated for 45 countries

Appendix Figure 1: Stunting prevalence attributable to the combined effect of maternal depression, intimate partner violence, and low maternal education

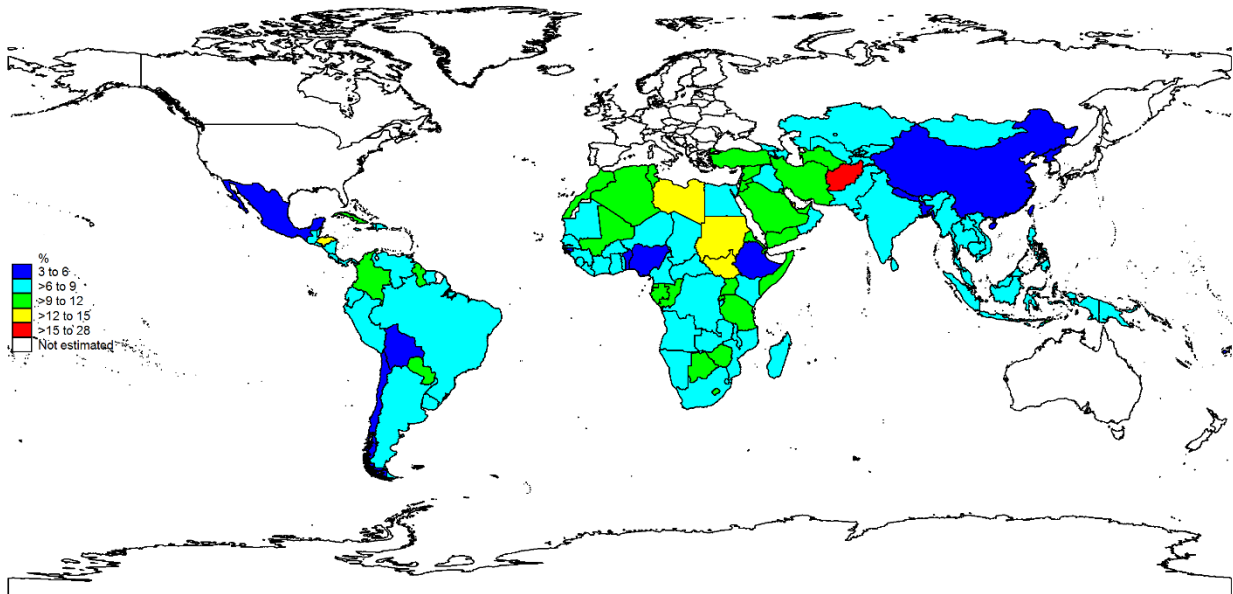


Appendix Figure 2: PAF of stunting attributable by country to (A) low maternal education; (B) maternal depression; (C) intimate partner violence; (D) orphanhood; (E) jointly to low maternal education, maternal depression, intimate partner violence

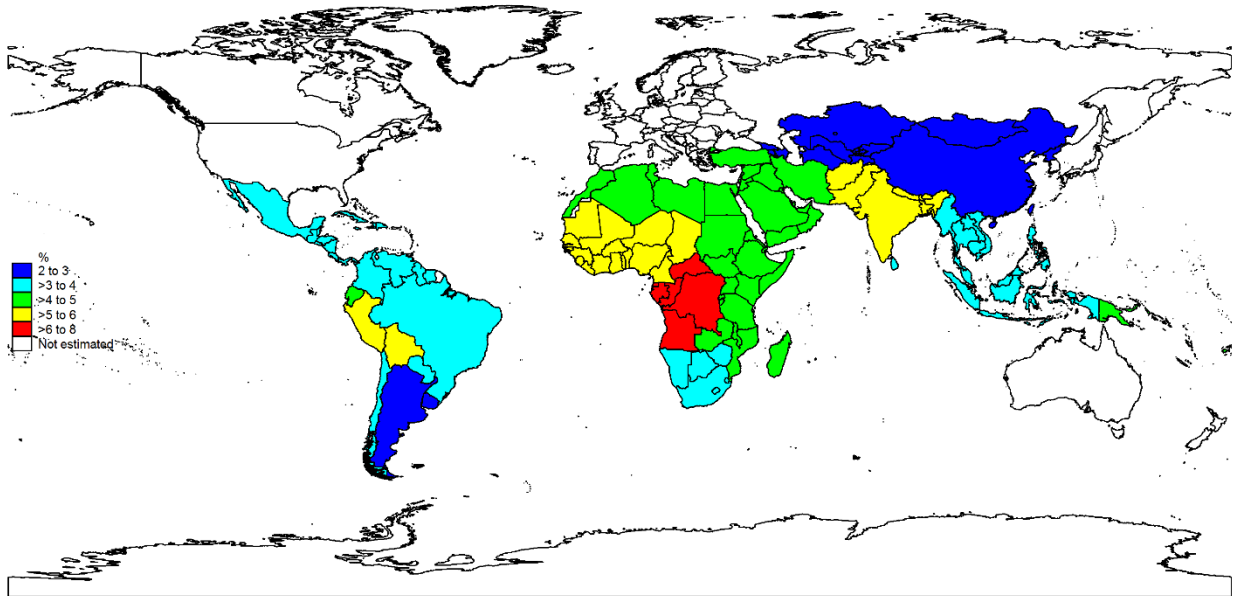
(A)



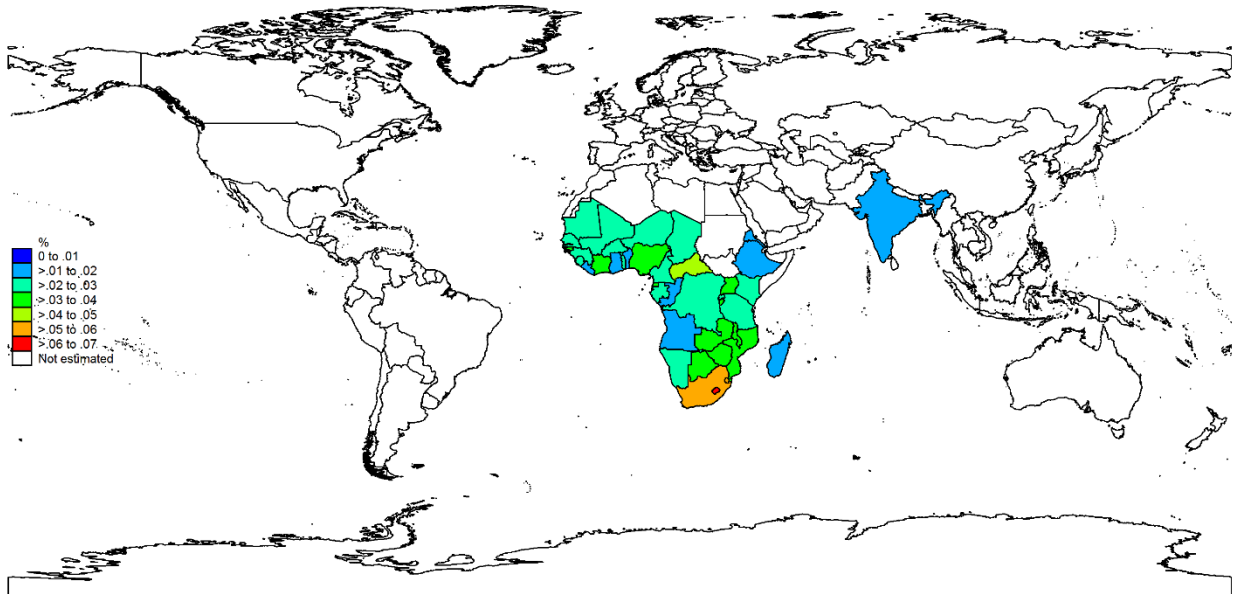
(B)



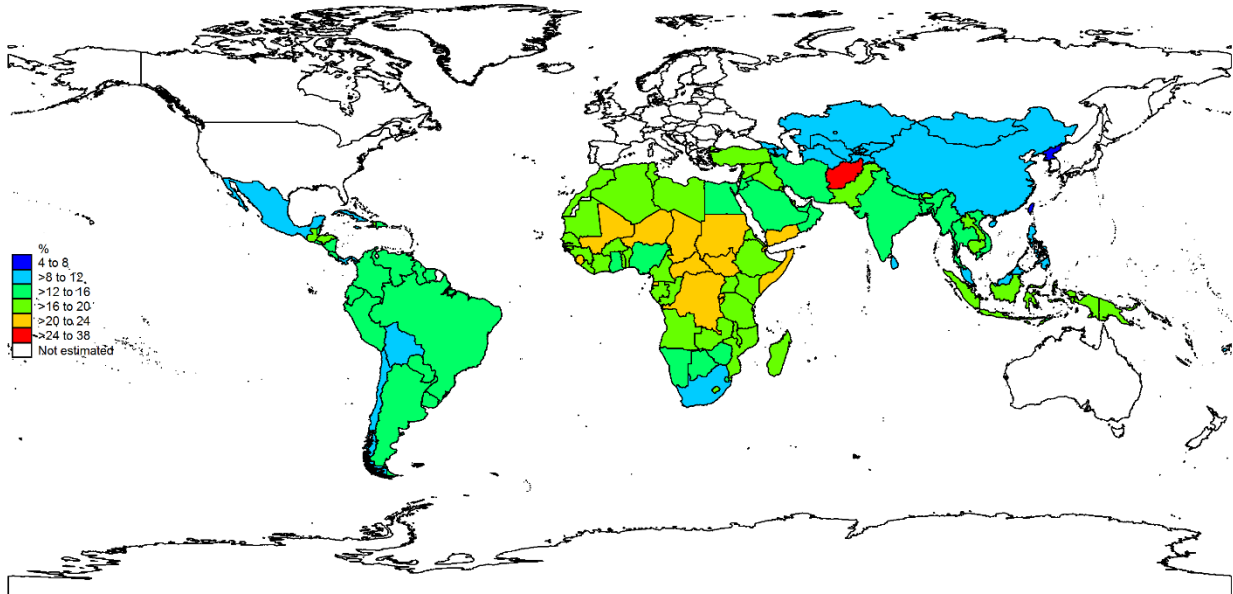
(C)



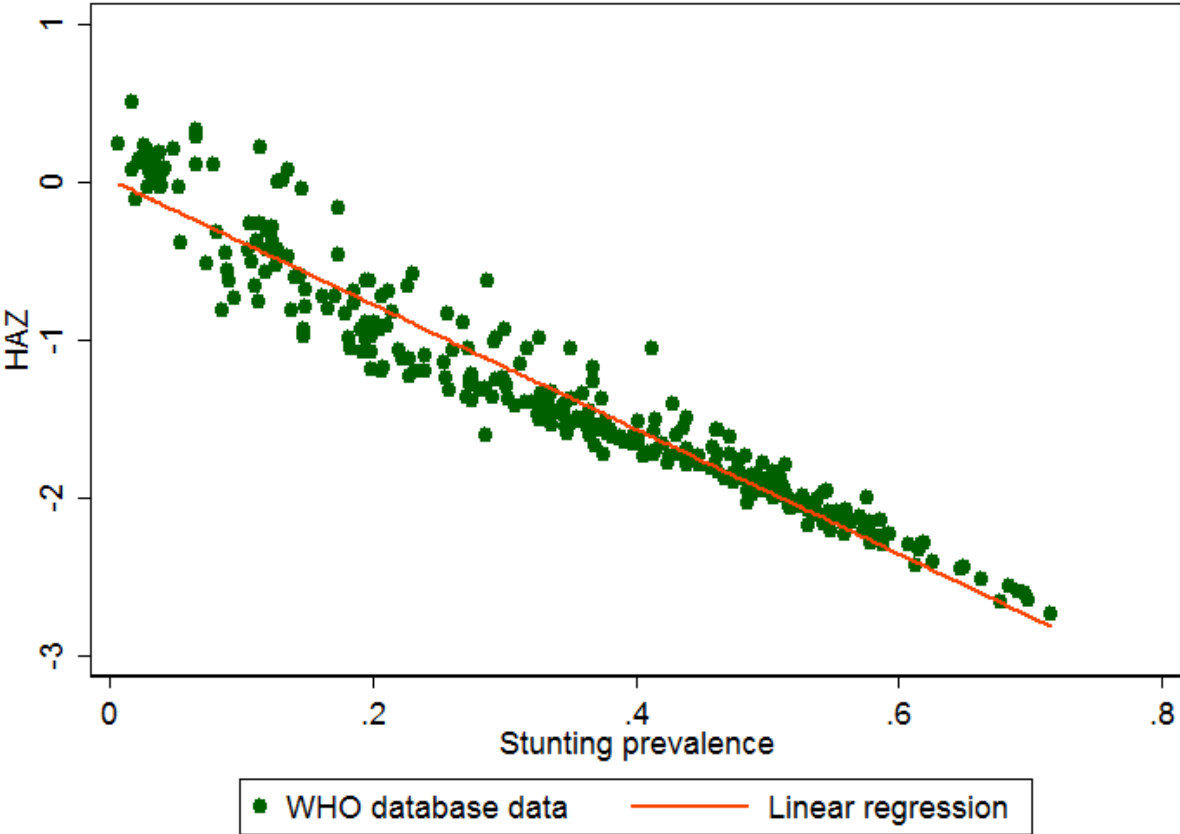
(D)



(E)



Appendix Figure 3: Scatter plot and regression line to show the linear relationship between height-for-age Z scores (HAZ) and prevalence of stunting



References

- ¹ World Health Organization. Nutrition Landscape Information System: Global Database on Child Growth and Malnutrition. 2016. <http://apps.who.int/nutrition/landscape/search.aspx> (accessed April 17, 2016).
- ² Stevens GA, Finucane MM, Paciorek CJ, Flaxman SR, White RA, Donner AJ, Ezzati M; Nutrition Impact Model Study Group (Child Growth). Trends in mild, moderate, and severe stunting and underweight, and progress towards MDG 1 in 141 developing countries: a systematic analysis of population representative data. *Lancet* 2012; 380(9844):824-34.
- ³ Danaei G, Andrews KG, Sudfeld C, Fink G, McCoy DC, Peet E, Sania A, Smith Fawzi MC, Ezzati M, Fawzi W. Risk factors for childhood stunting in 137 developing countries: a comparative risk assessment analysis at global, regional, and country levels. *PLOS Medicine* 2016; 13(11):e1002164.
- ⁴ Fink G, Peet E, Danaei G, Andrews K, McCoy DC, Sudfeld CR, Smith Fawzi MC, Ezzati M, Fawzi WW. Schooling and wage income losses due to early-childhood growth faltering in developing countries: national, regional, and global estimates. *Am J Clin Nutr* 2016; 104(1):104-12.
- ⁵ Adair LS, Fall CH, Osmond C, Stein AD, Martorell R, Ramirez-Zea M, Sachdev HS, Dahly DL, Bas I, Norris SA, Micklesfield L, Hallal P, Victora CG; COHORTS group. Associations of linear growth and relative weight gain during early life with adult health and human capital in countries of low and middle income: findings from five birth cohort studies. *Lancet*. 2013 Aug 10;382(9891):525-34.