

## Supporting Information

### Comparative antigenicity of thiourea- and adipic amide-linked neoglycoconjugates containing modified oligomannose epitopes for the carbohydrate-specific HIV antibody 2G12

Nino Trattnig,<sup>1</sup> Patrick Mayrhofer,<sup>2</sup> Renate Kunert,<sup>2</sup> Lukas Mach,<sup>3</sup> Ralph Pantophlet,<sup>4</sup> Paul Kosma<sup>1</sup>

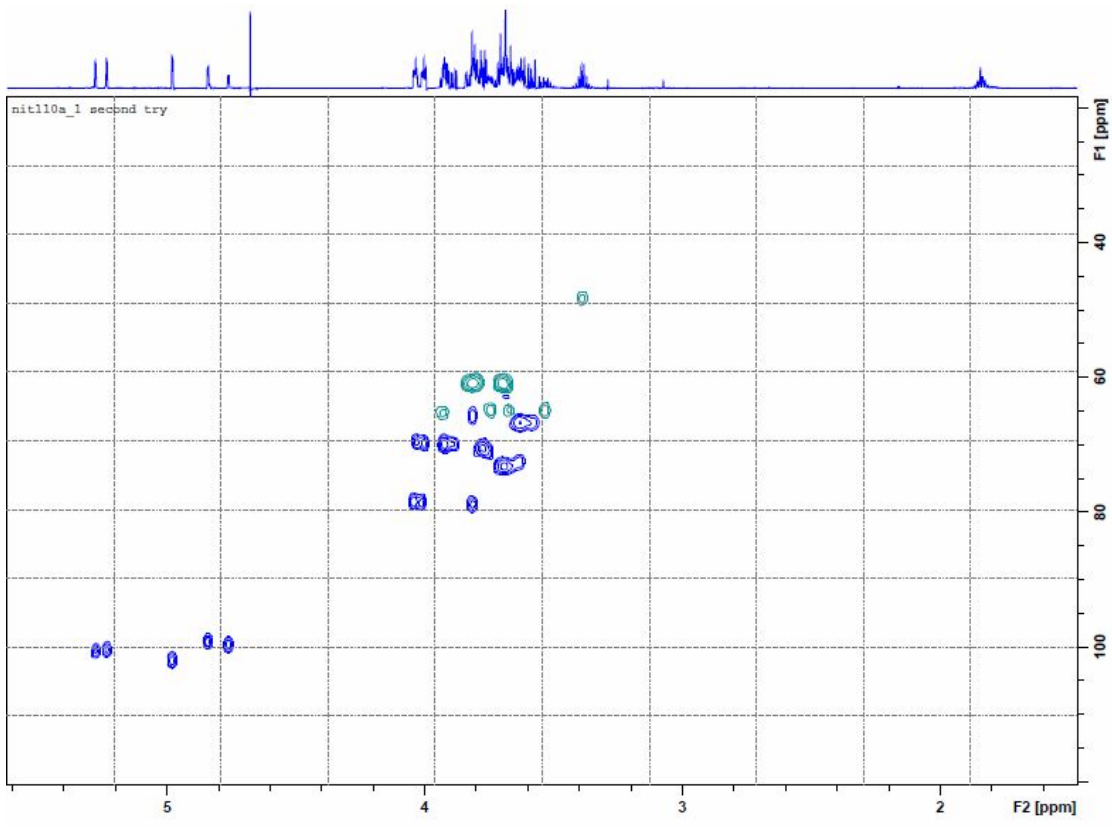
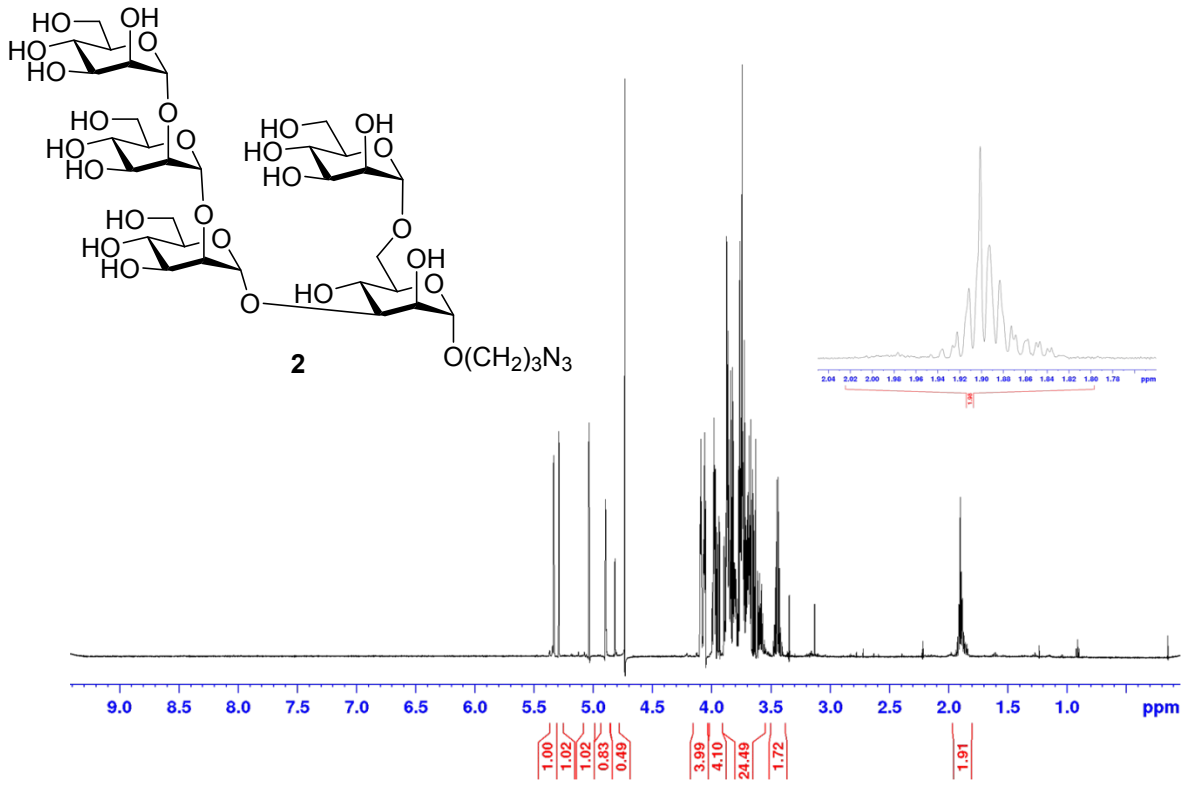
<sup>1</sup>Department of Chemistry, University of Natural Resources and Life Sciences, Vienna, Austria

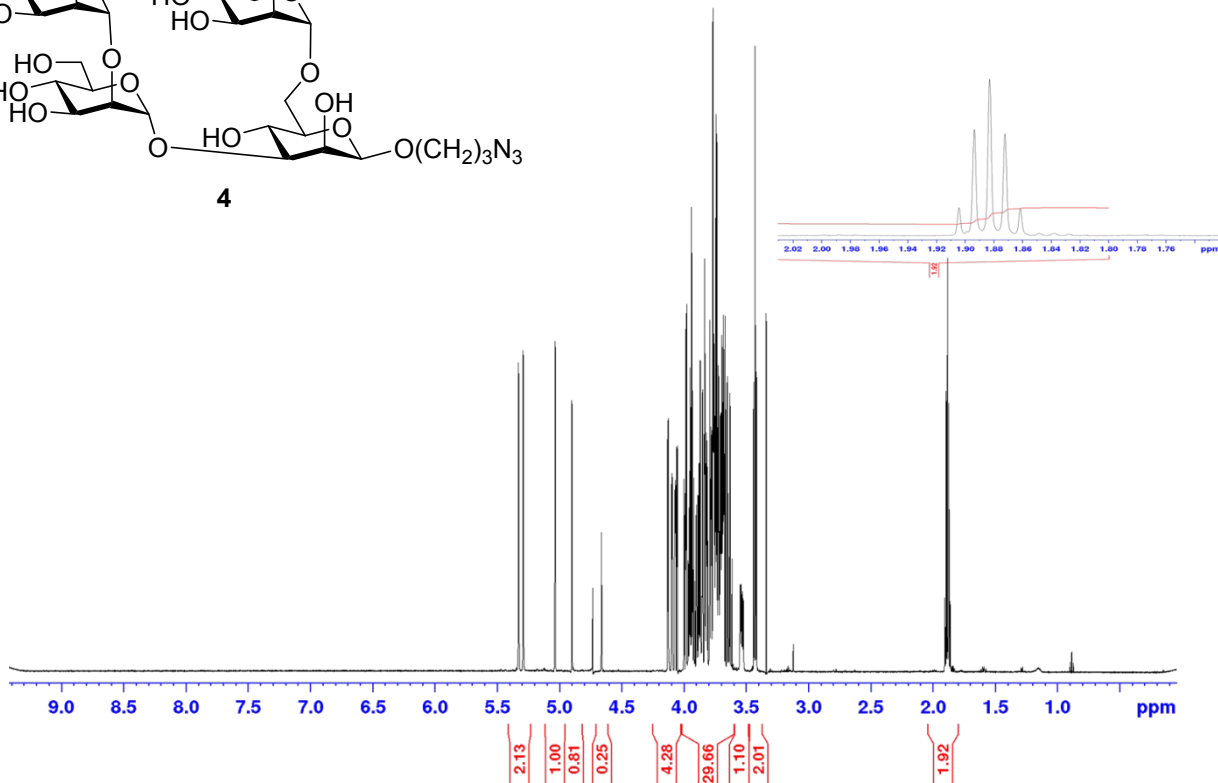
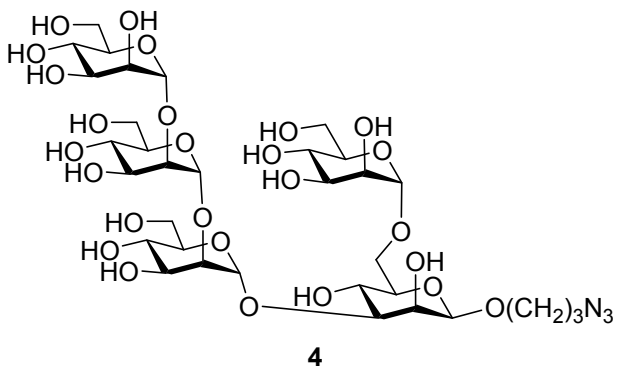
<sup>2</sup>Department of Biotechnology, University of Natural Resources and Life Sciences, Vienna, Austria

<sup>3</sup>Department of Applied Genetics and Cell Biology, University of Natural Resources and Life Sciences, Vienna, Austria

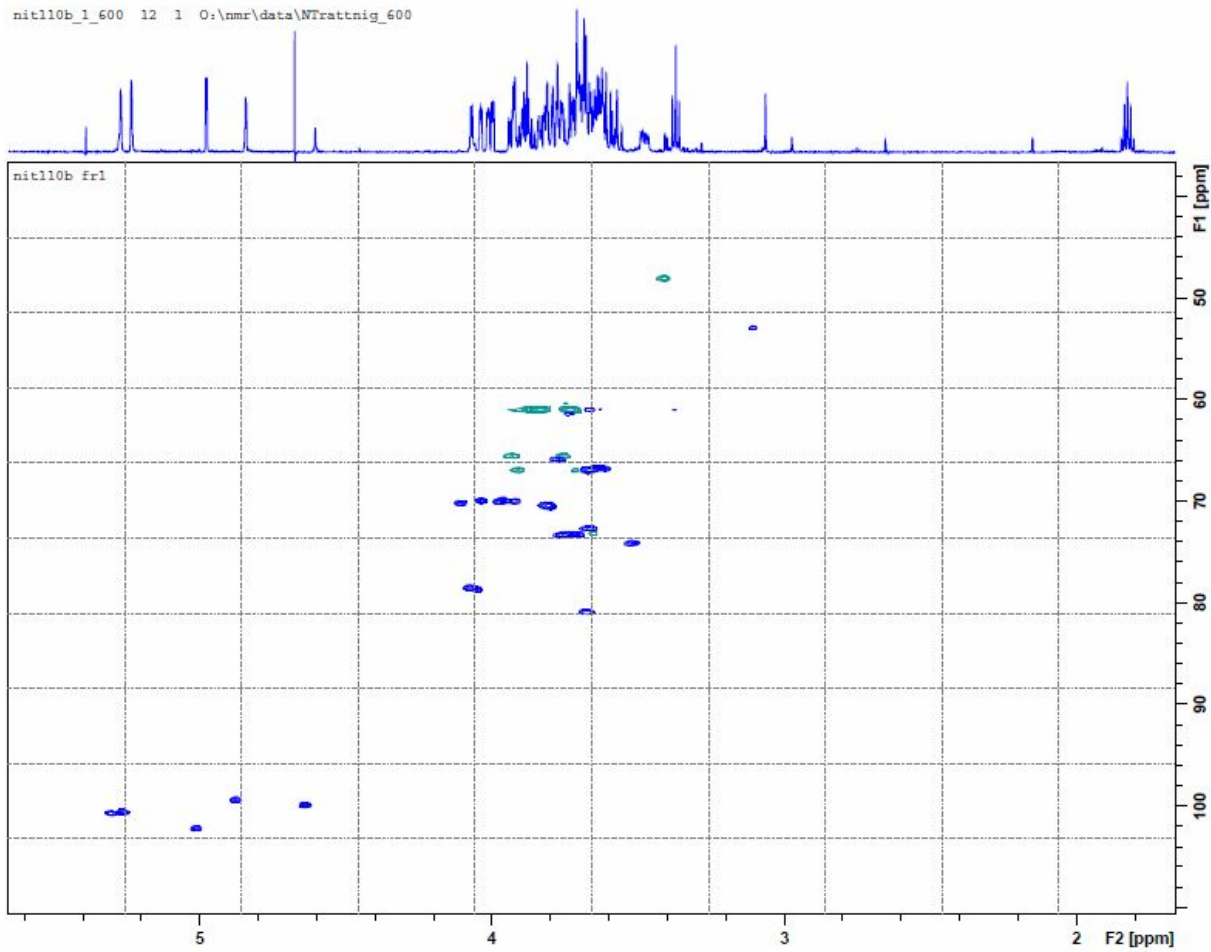
<sup>4</sup>Faculty of Health Sciences and Department of Molecular Biology and Biochemistry, Simon Fraser University, Burnaby, Canada

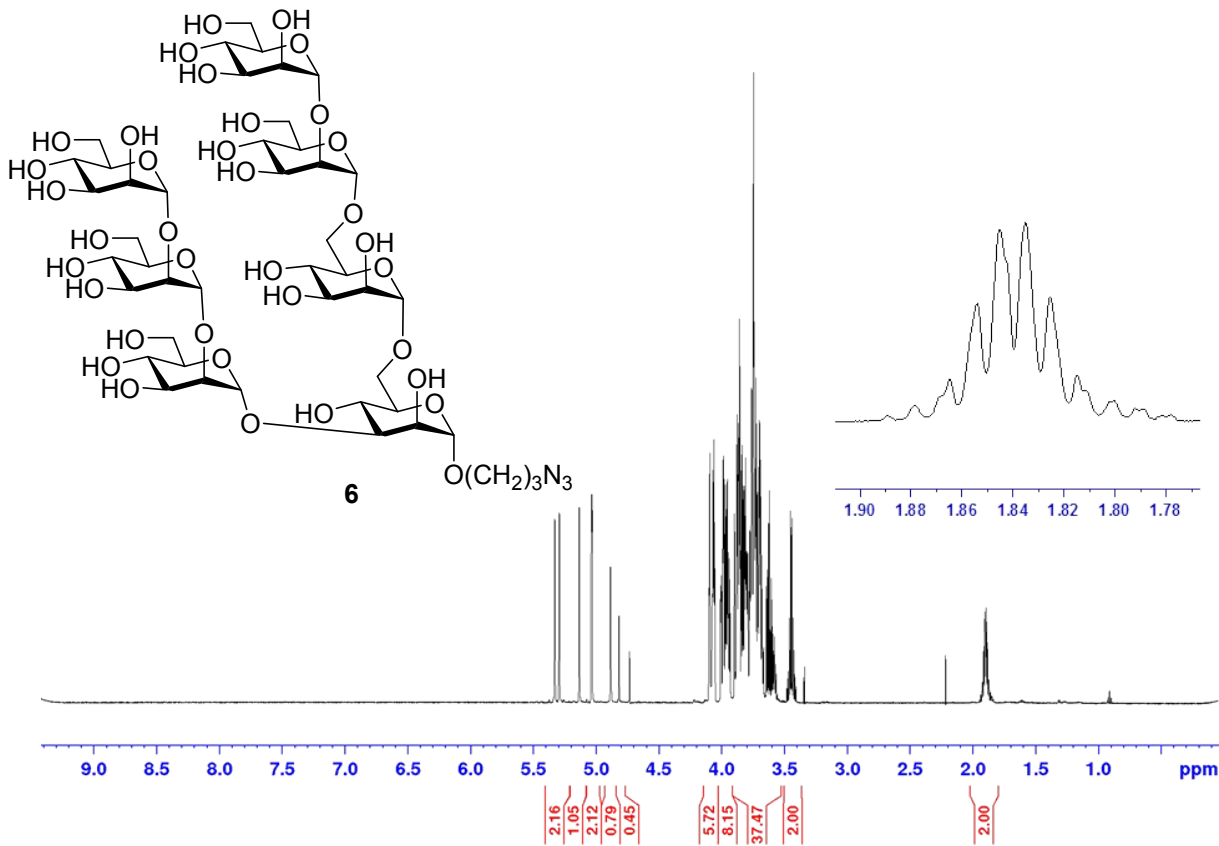
<b>Contents</b>	<b>Page</b>
<sup>1</sup> H and HSQC spectra of compounds <b>2, 4, 6, 8, 10, 12</b>	S2
<sup>1</sup> H and <sup>13</sup> C NMR spectrum of <b>24</b>	S8
<sup>1</sup> H NMR spectra of compounds <b>25-30</b>	S9
MALDI-MS spectra of conjugates	S15
BLI sensorgrams of conjugates	S20
Table S1. Oligonucleotide primers	S23



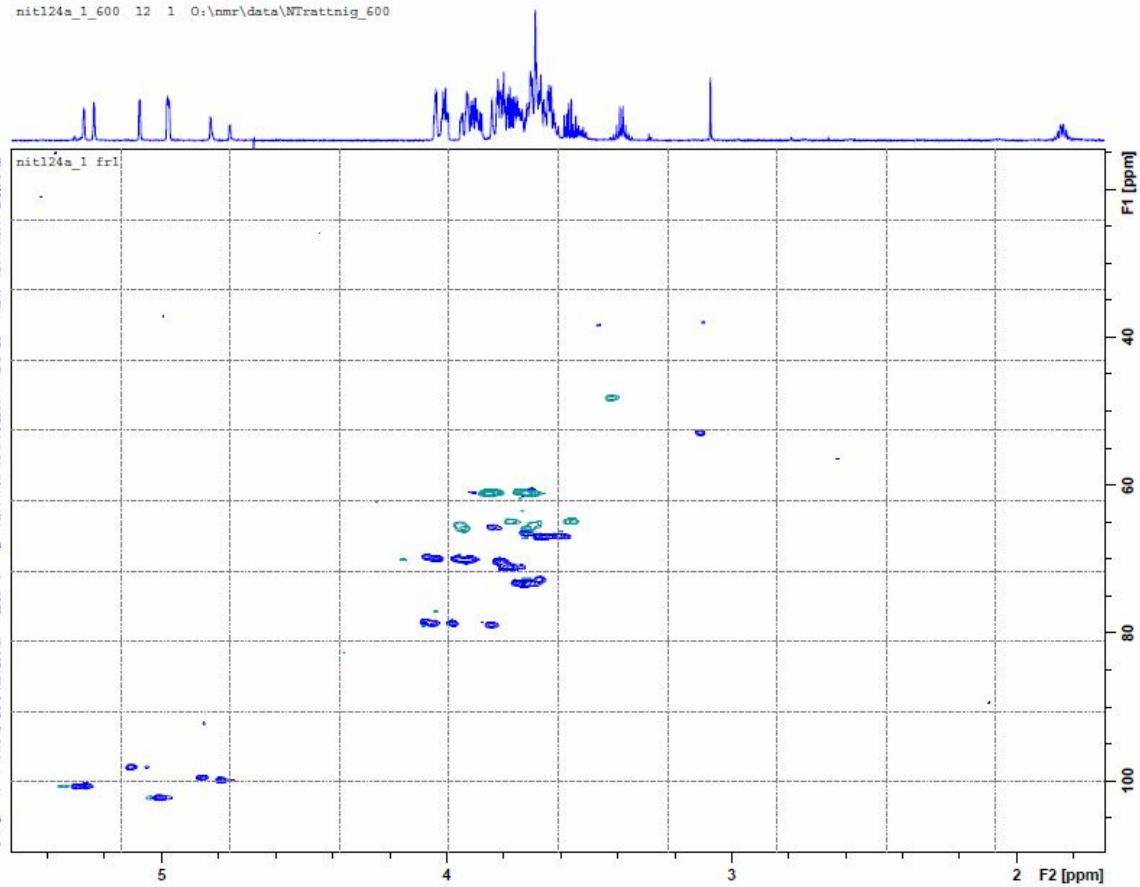


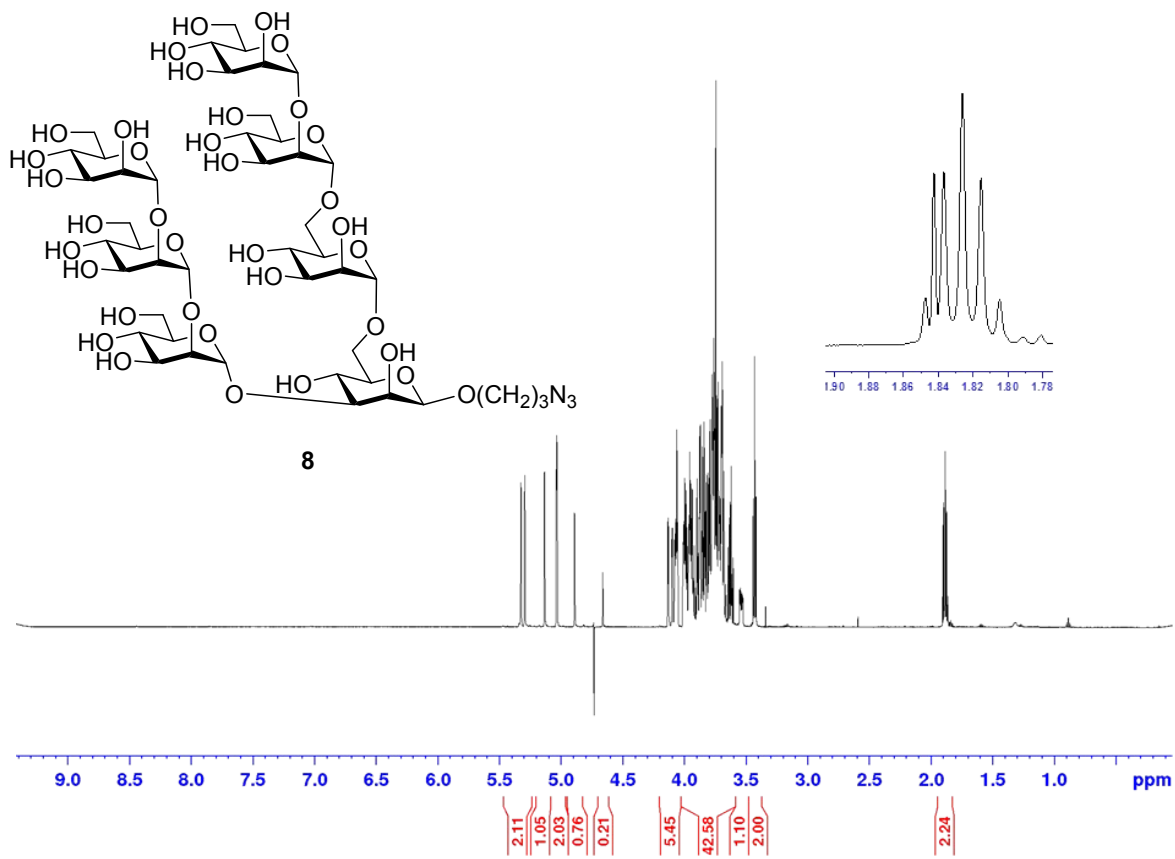
nit110b\_1\_600 12 1 O:\nmr\data\NTtrattmig\_600



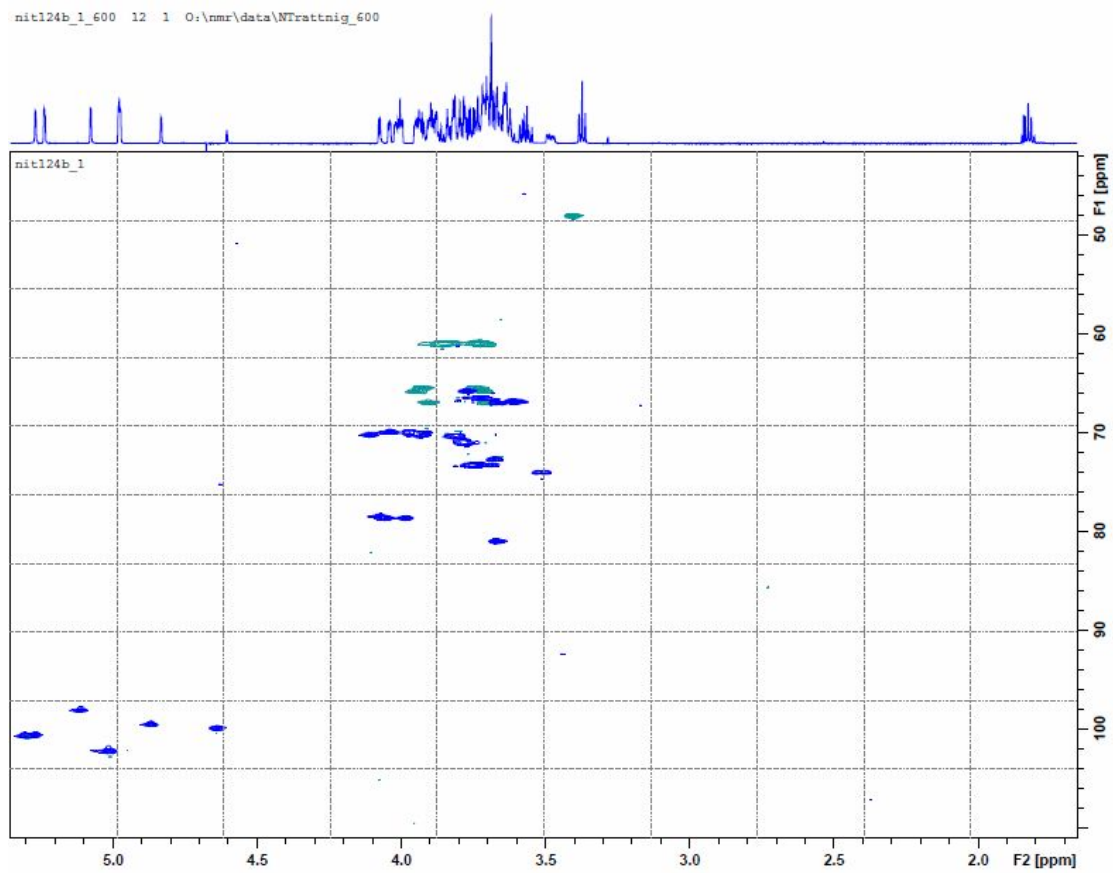


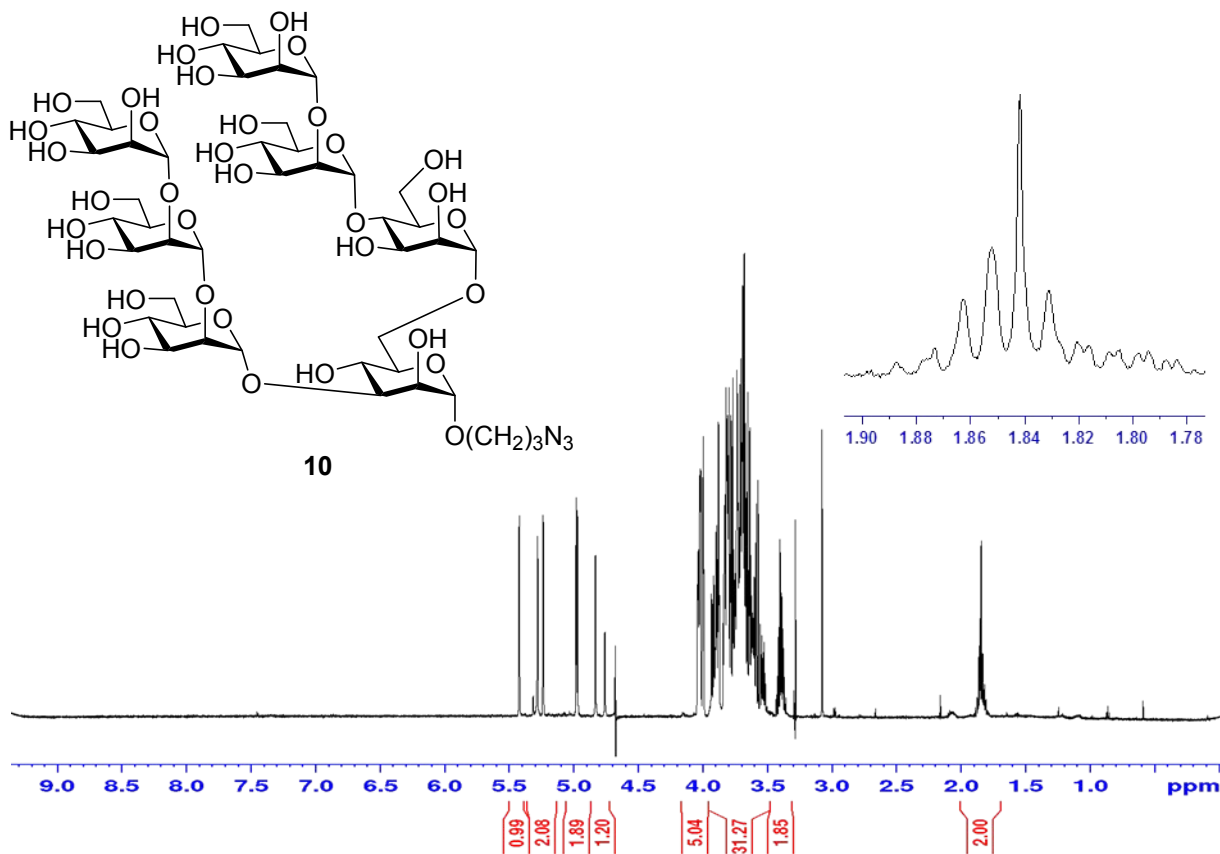
nit124a\_1\_600 12 1 O:\nmr\data\NTrattnig\_600



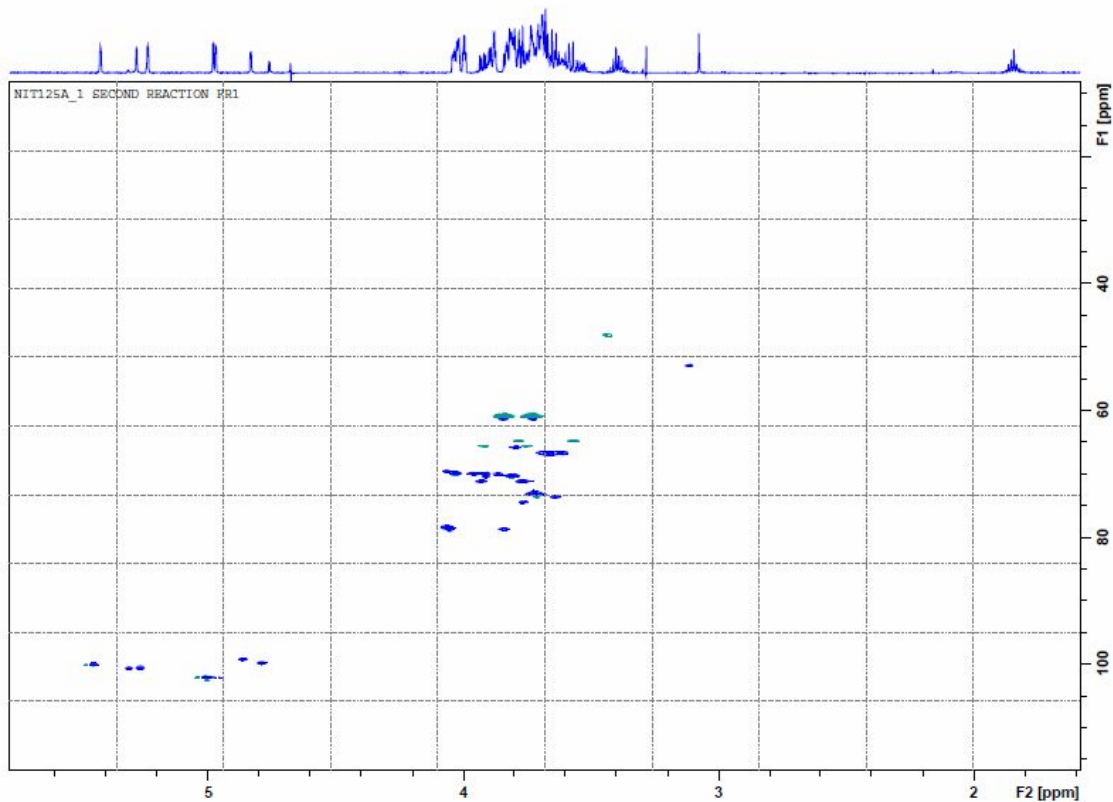


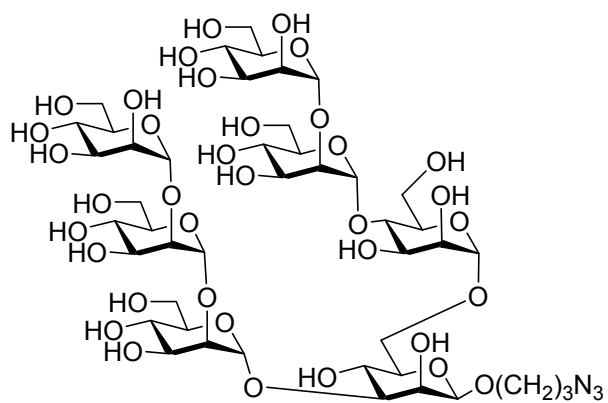
nit124b\_1\_600 12 1 O:\nmr\data\NTrattnig\_600



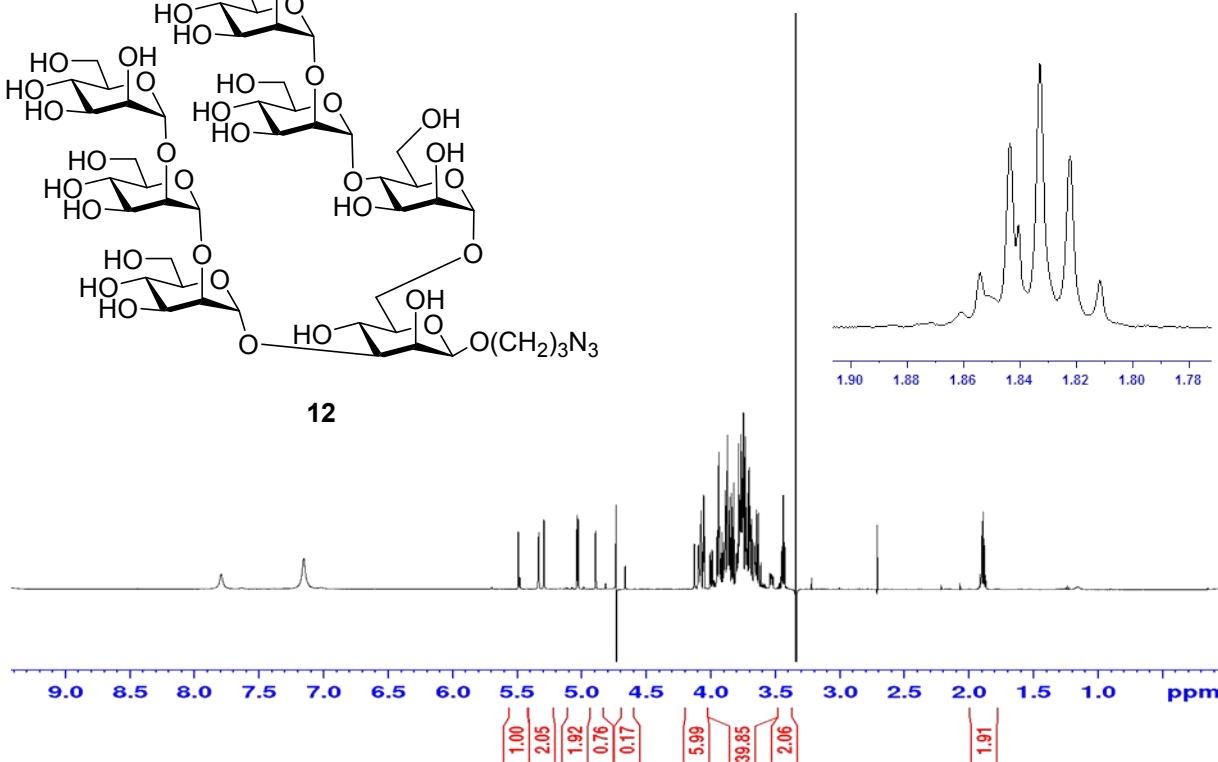


nit125a\_1\_600 22 1 O:\nmr\data\NTrattnig\_600

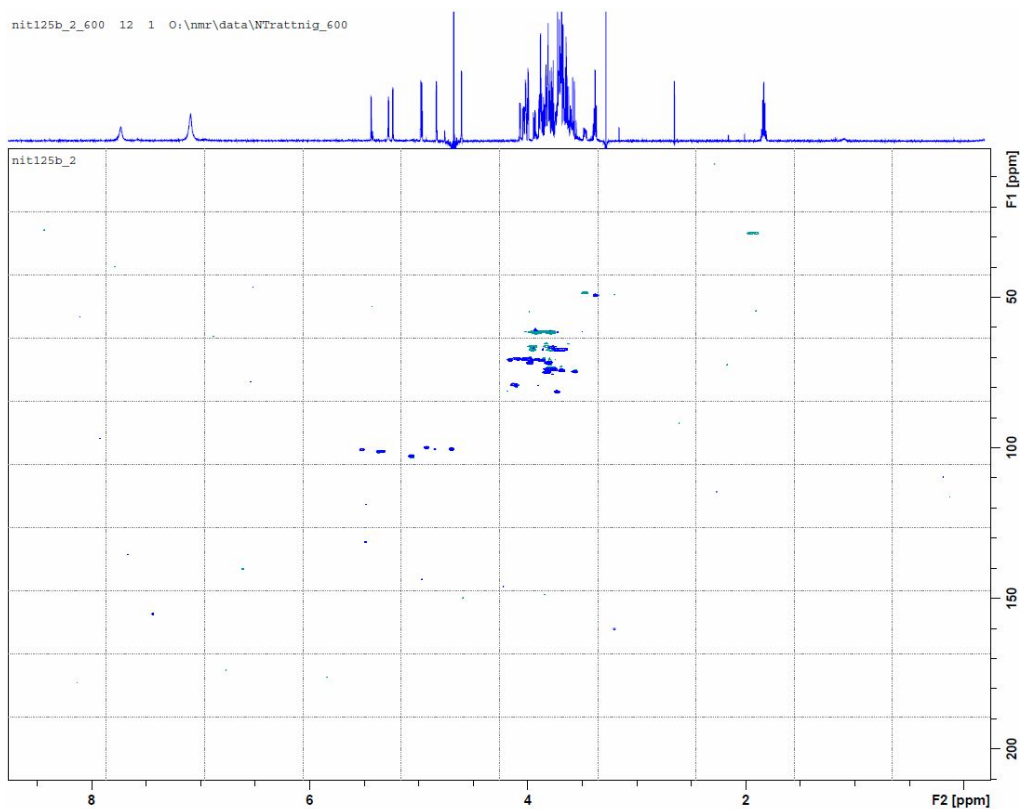


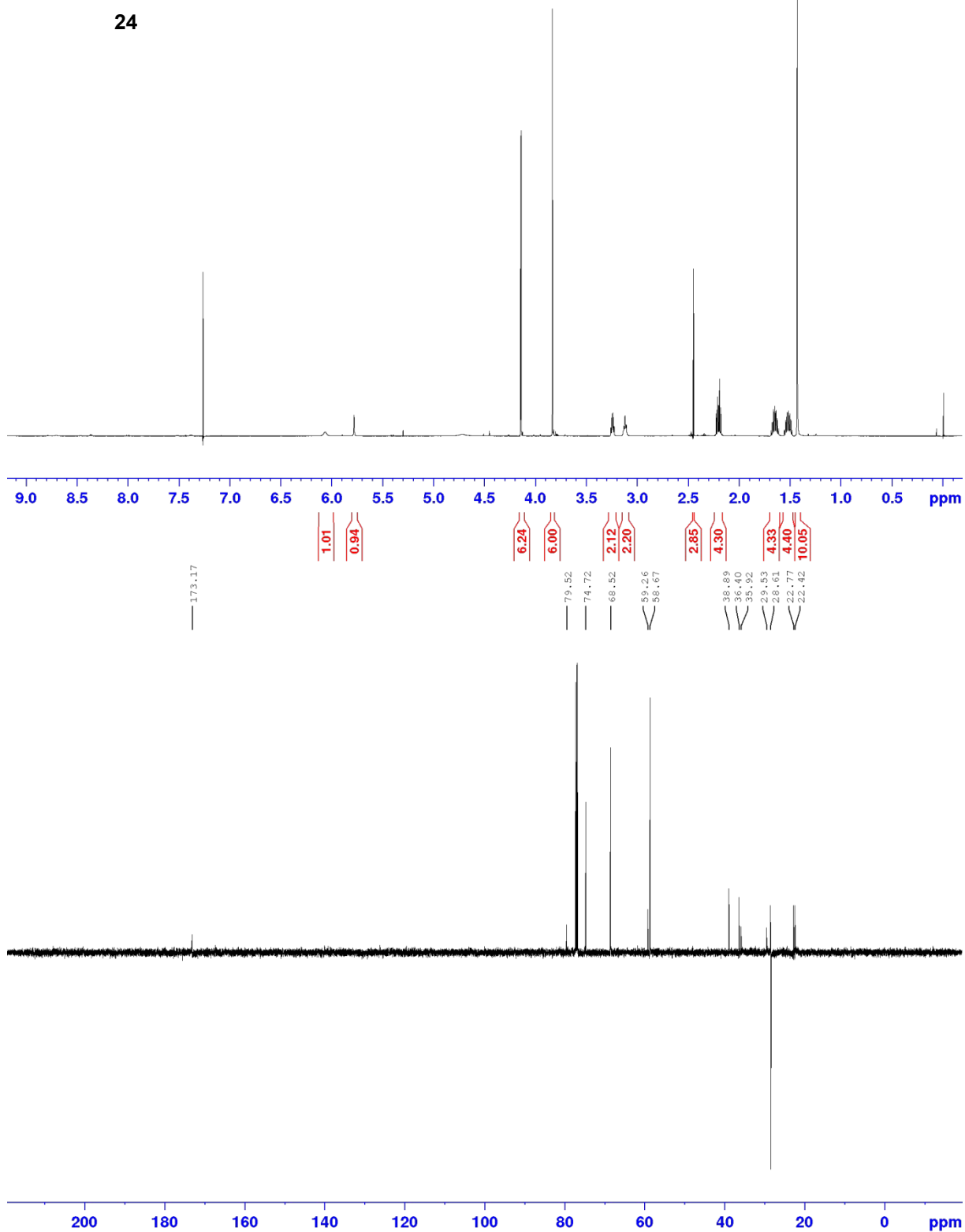
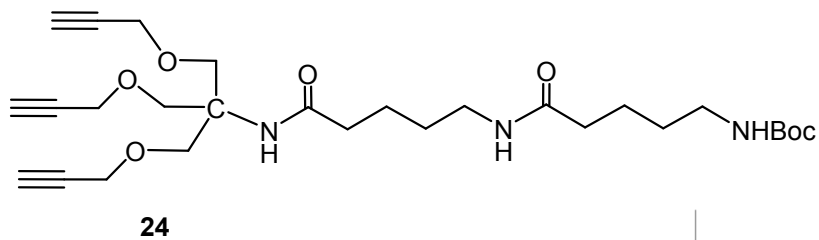


12

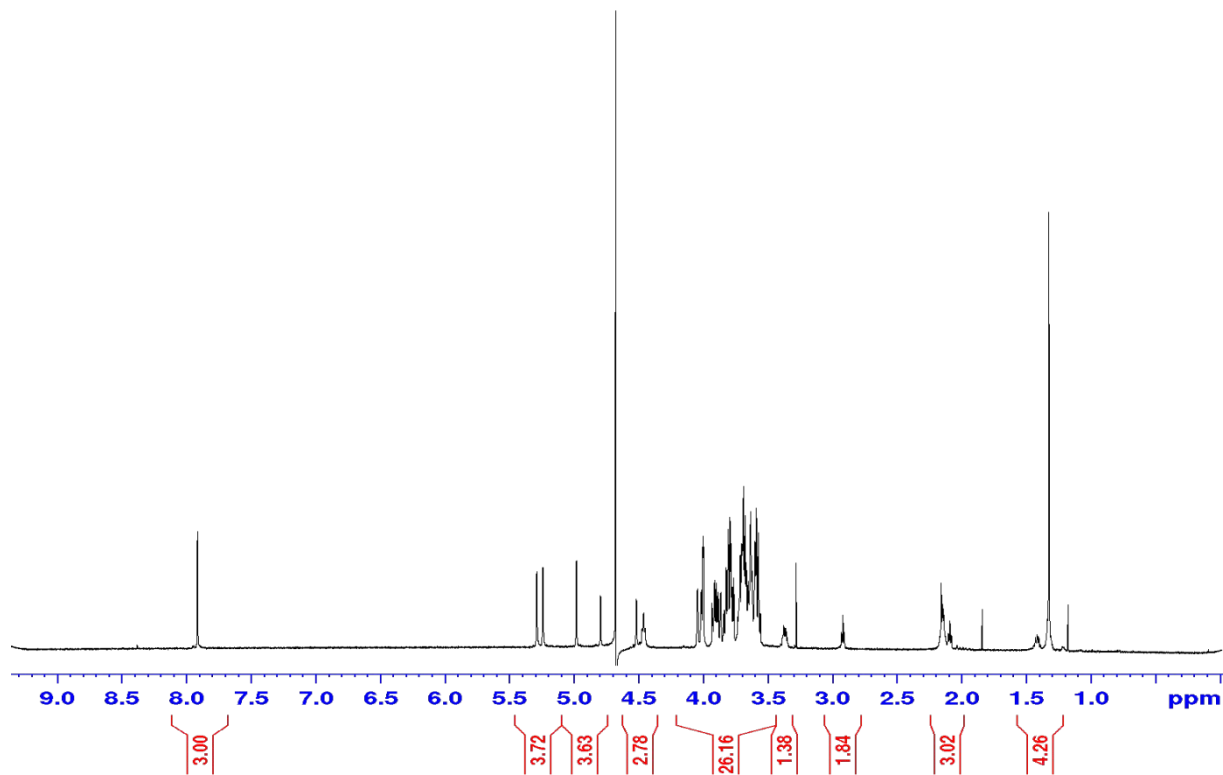
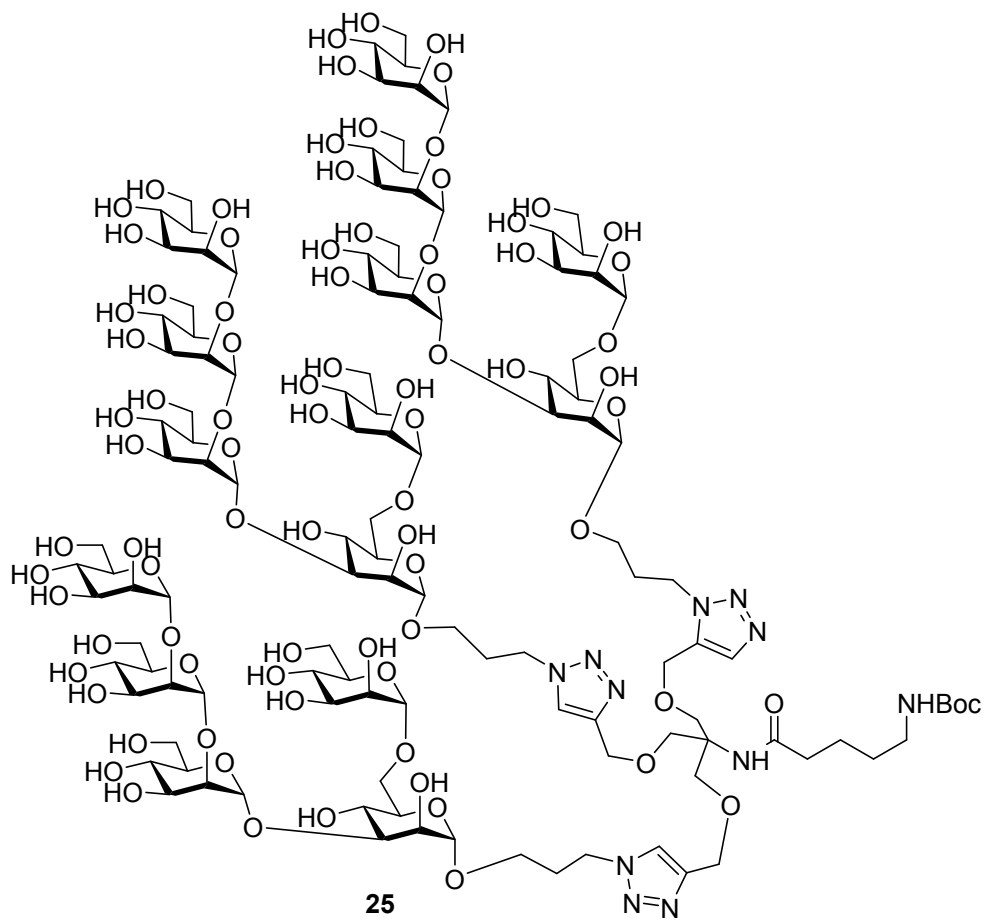


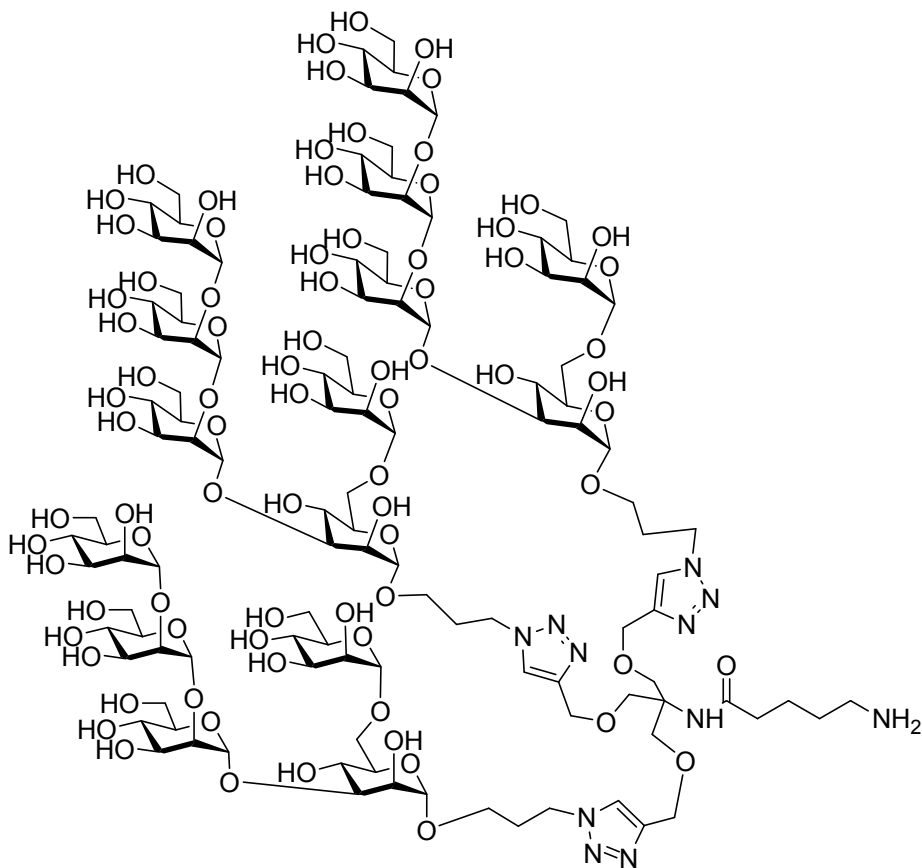
nit125b\_2\_600 12 1 0:\nmr\data\NTrattnig\_600



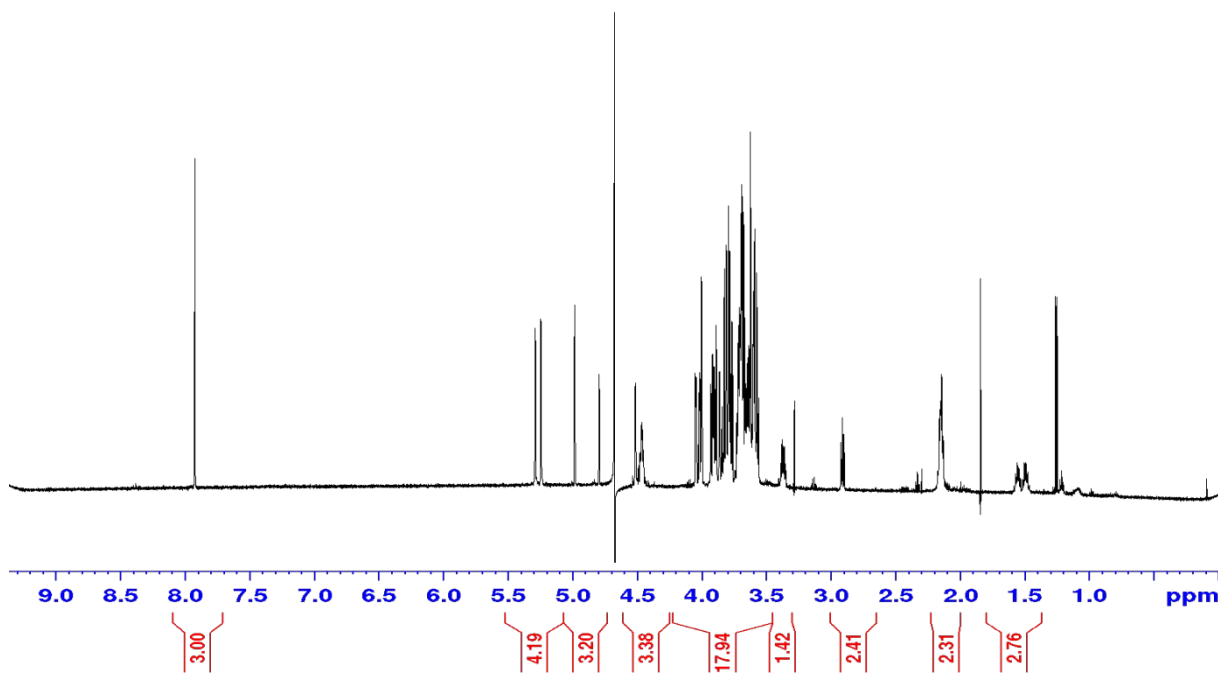


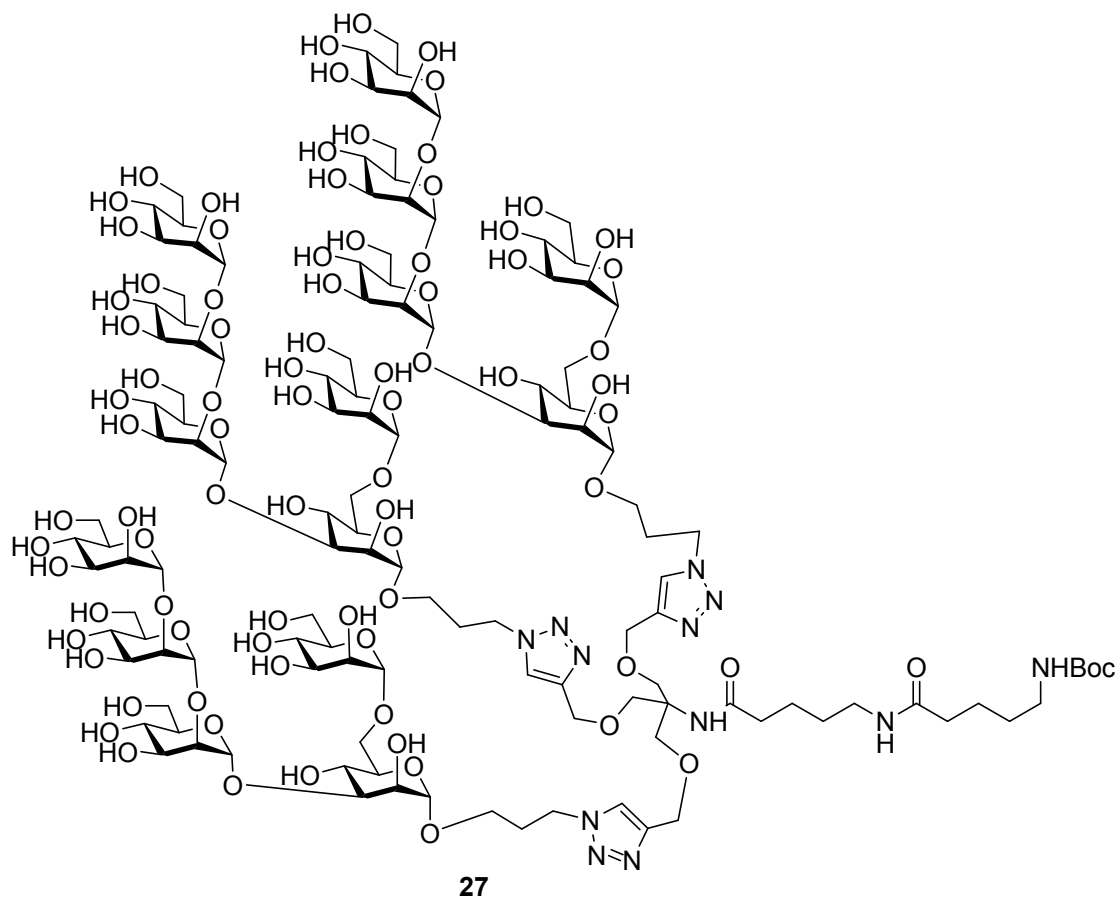




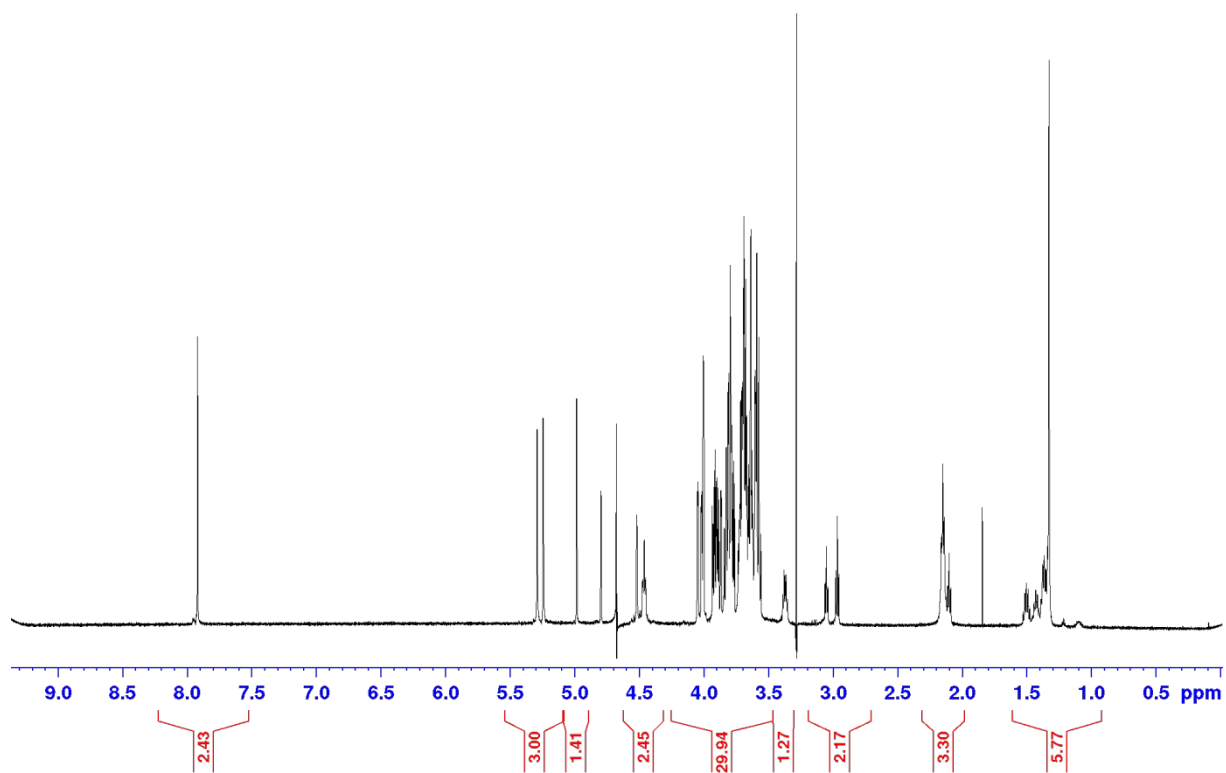


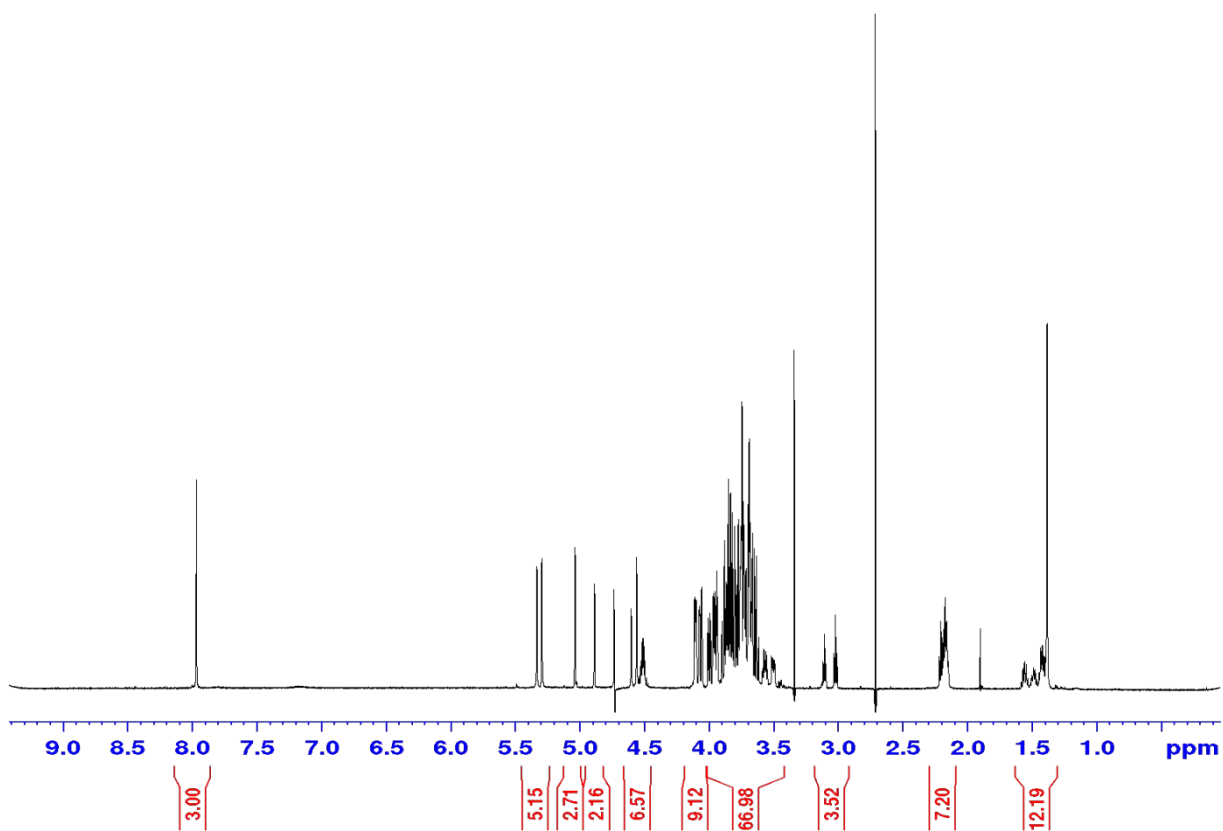
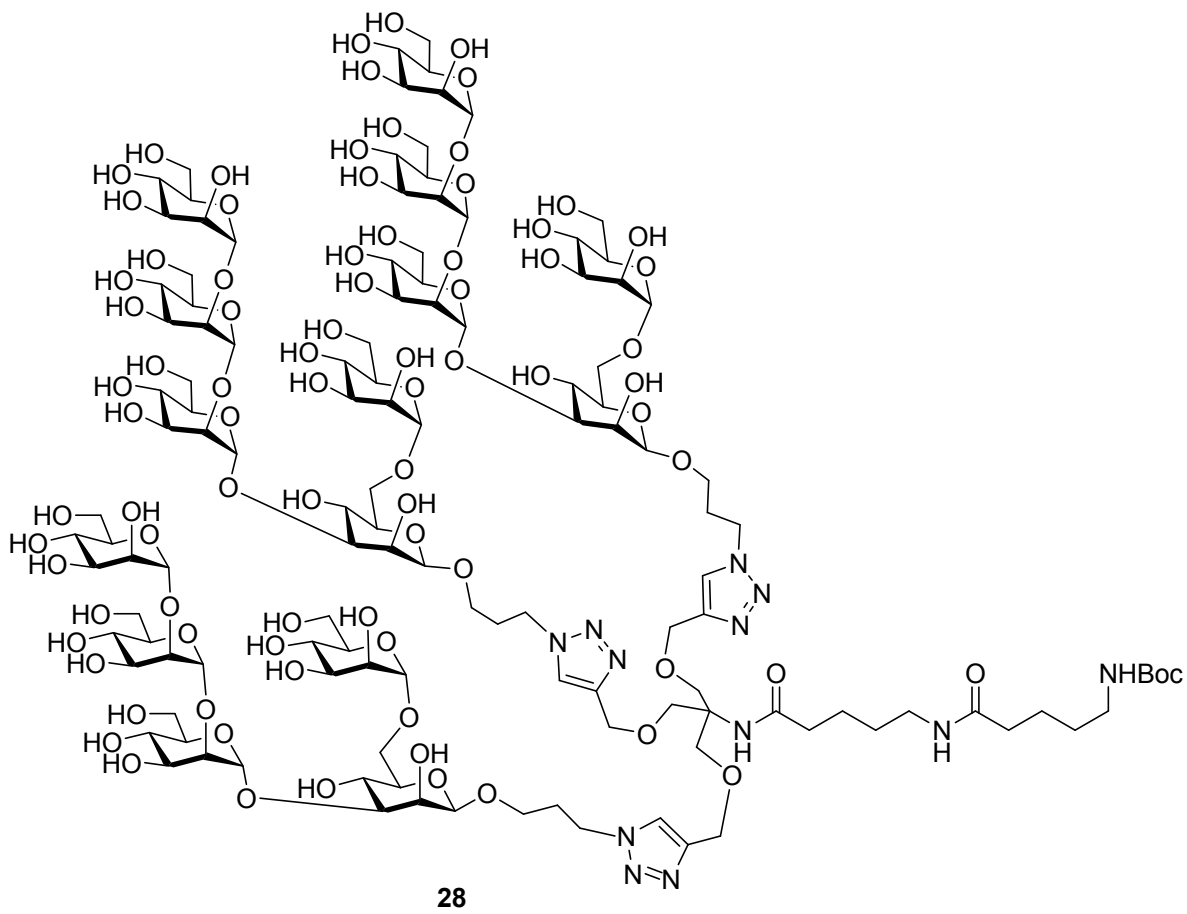
26

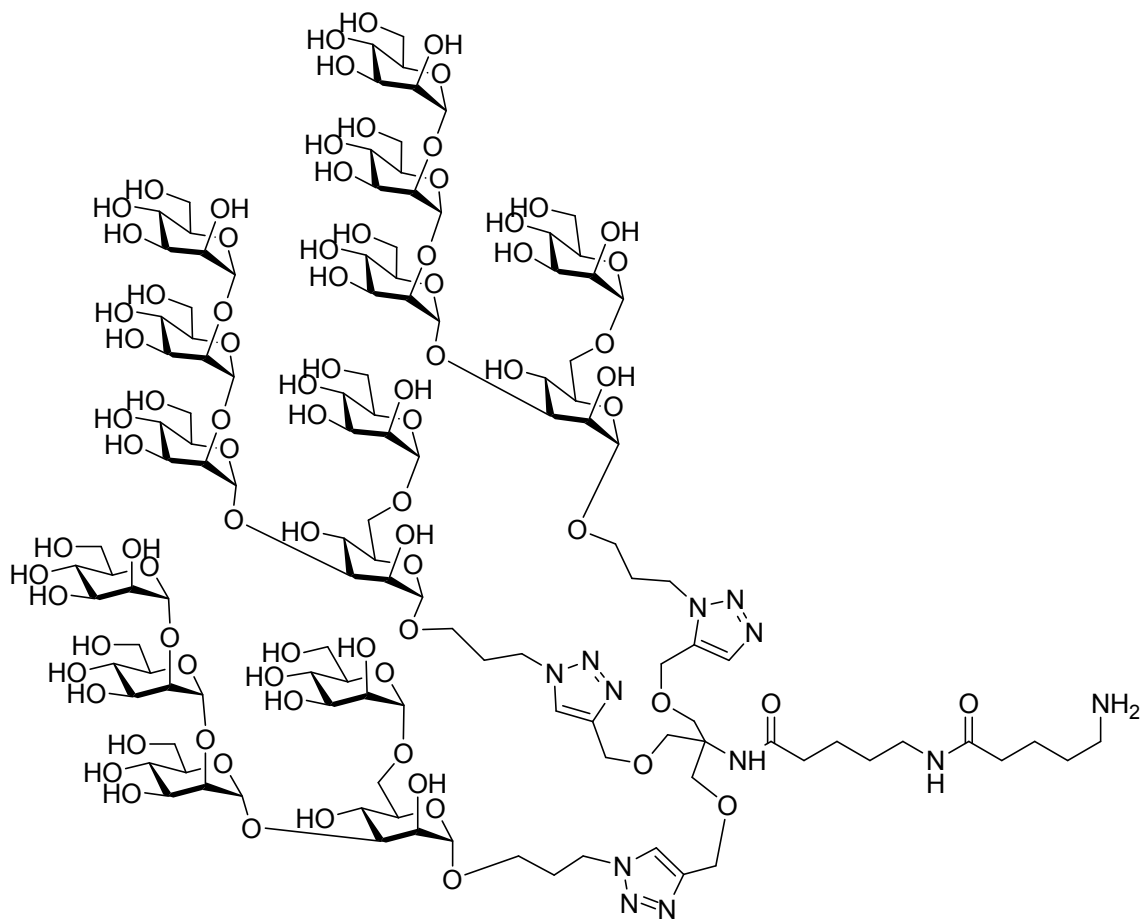




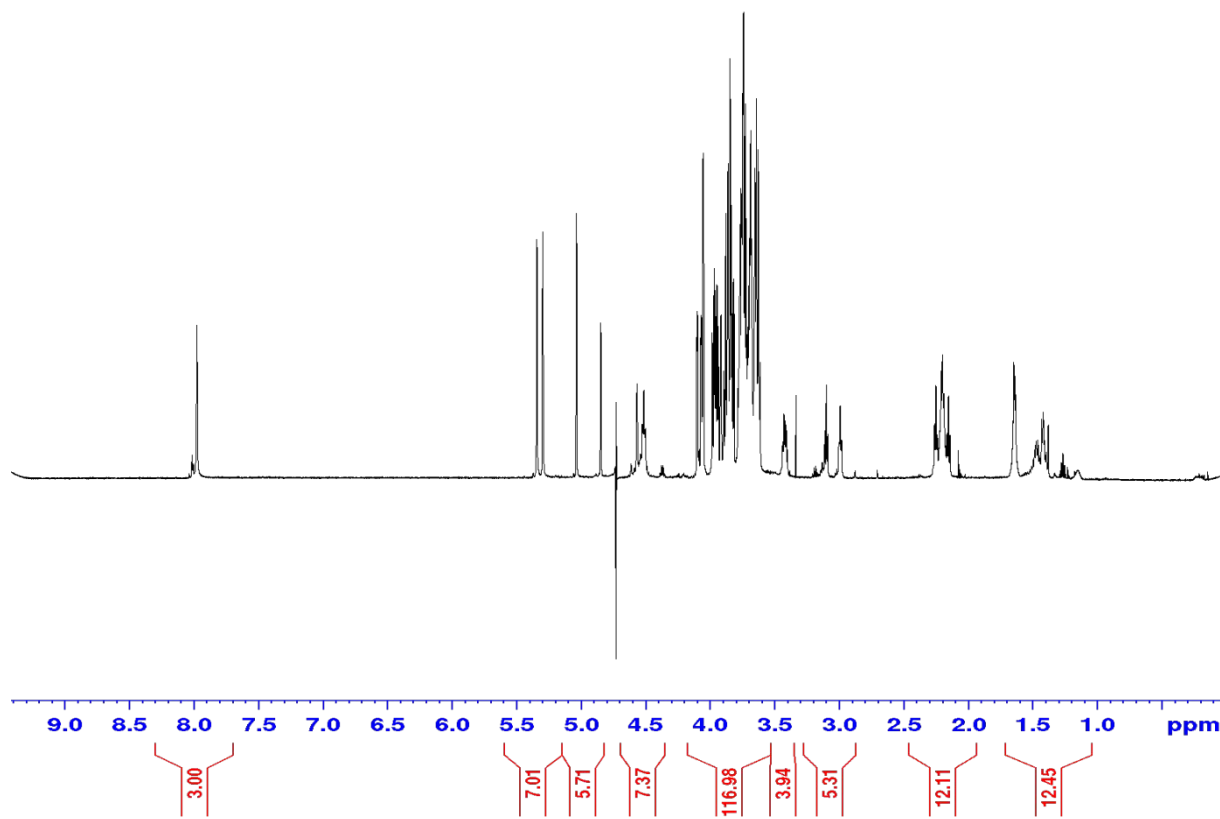
27

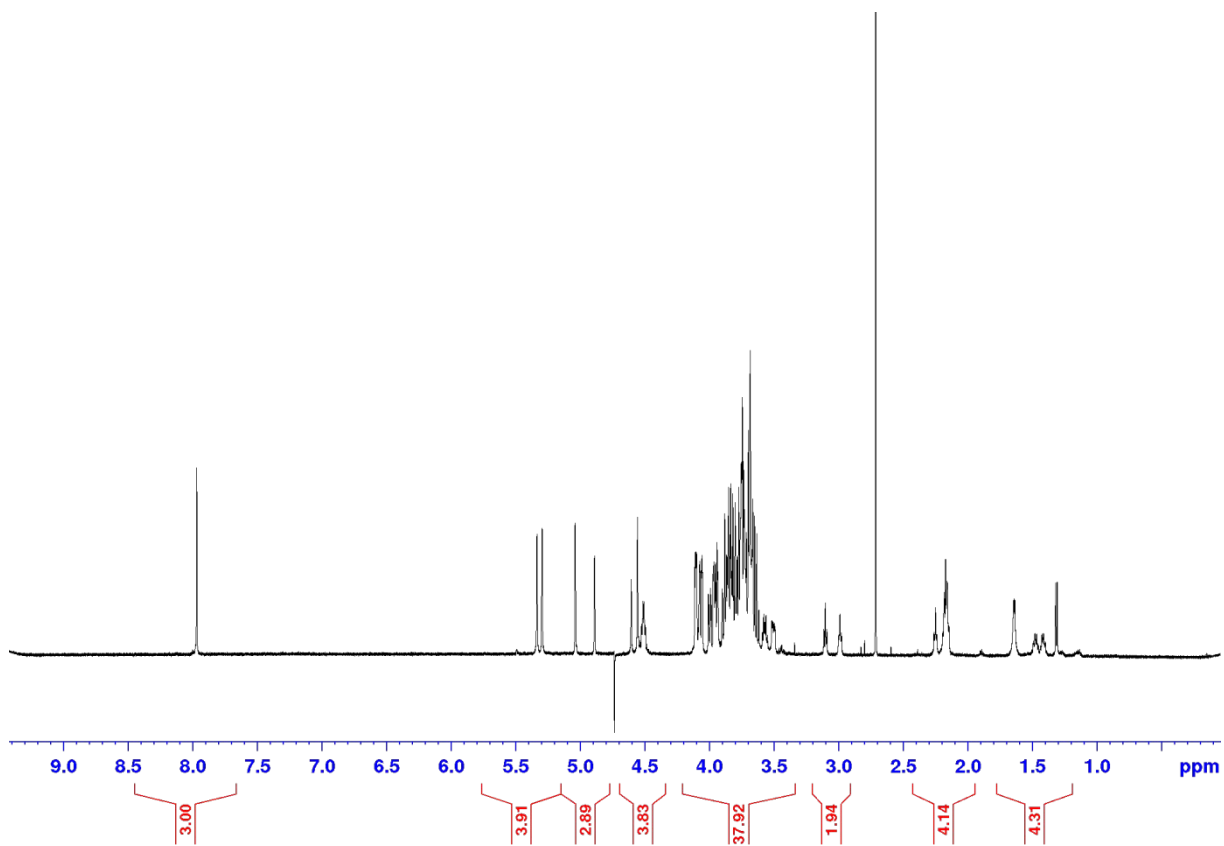
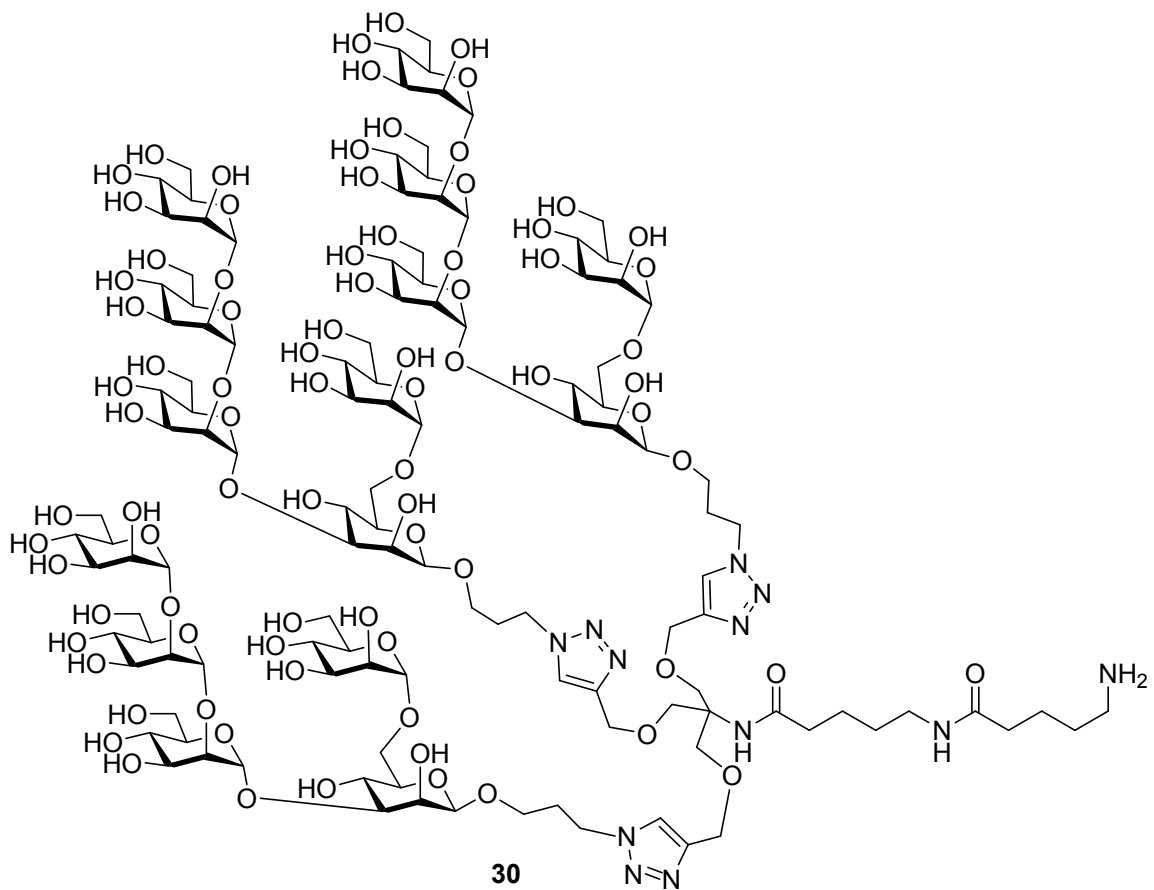


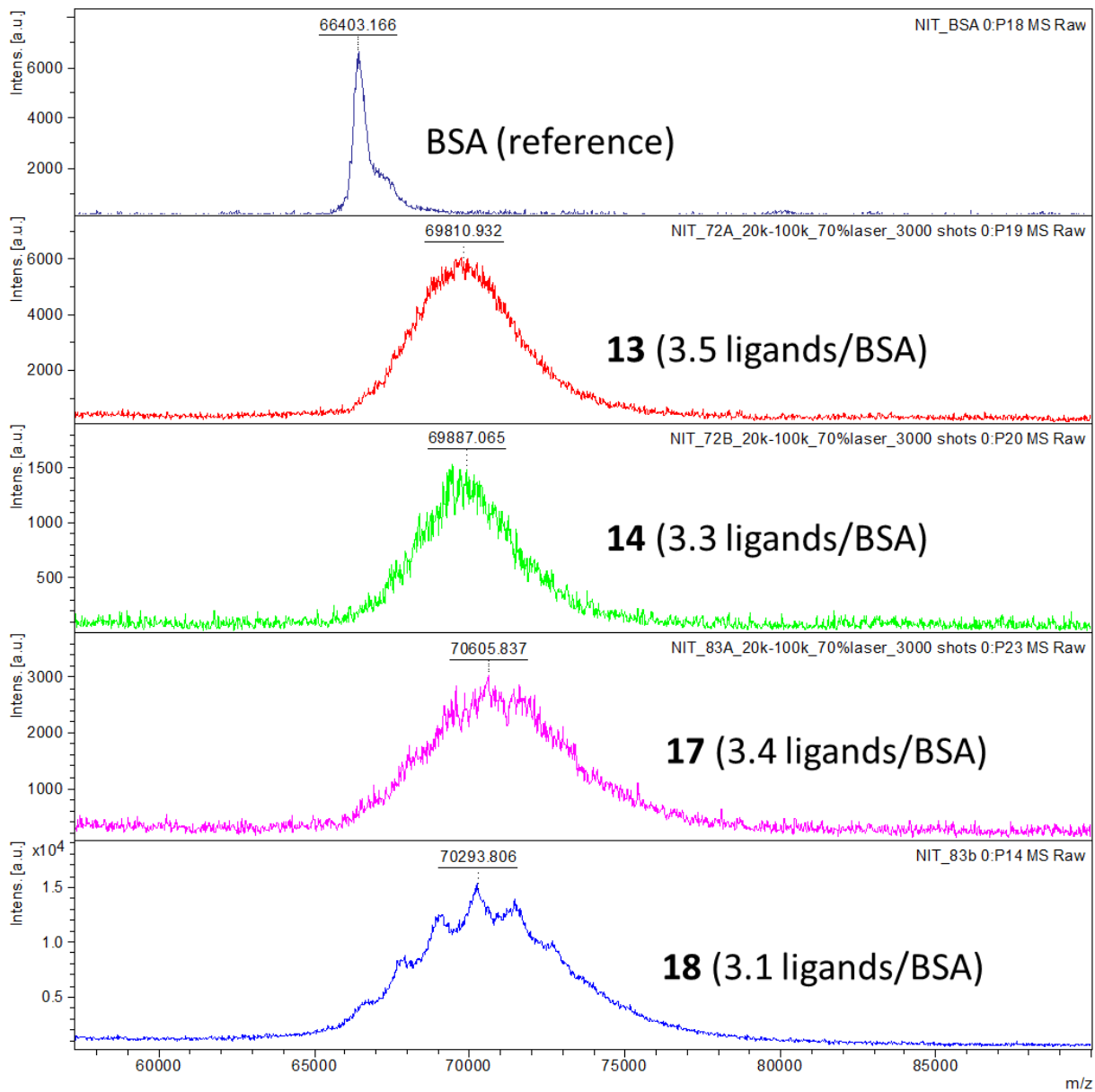




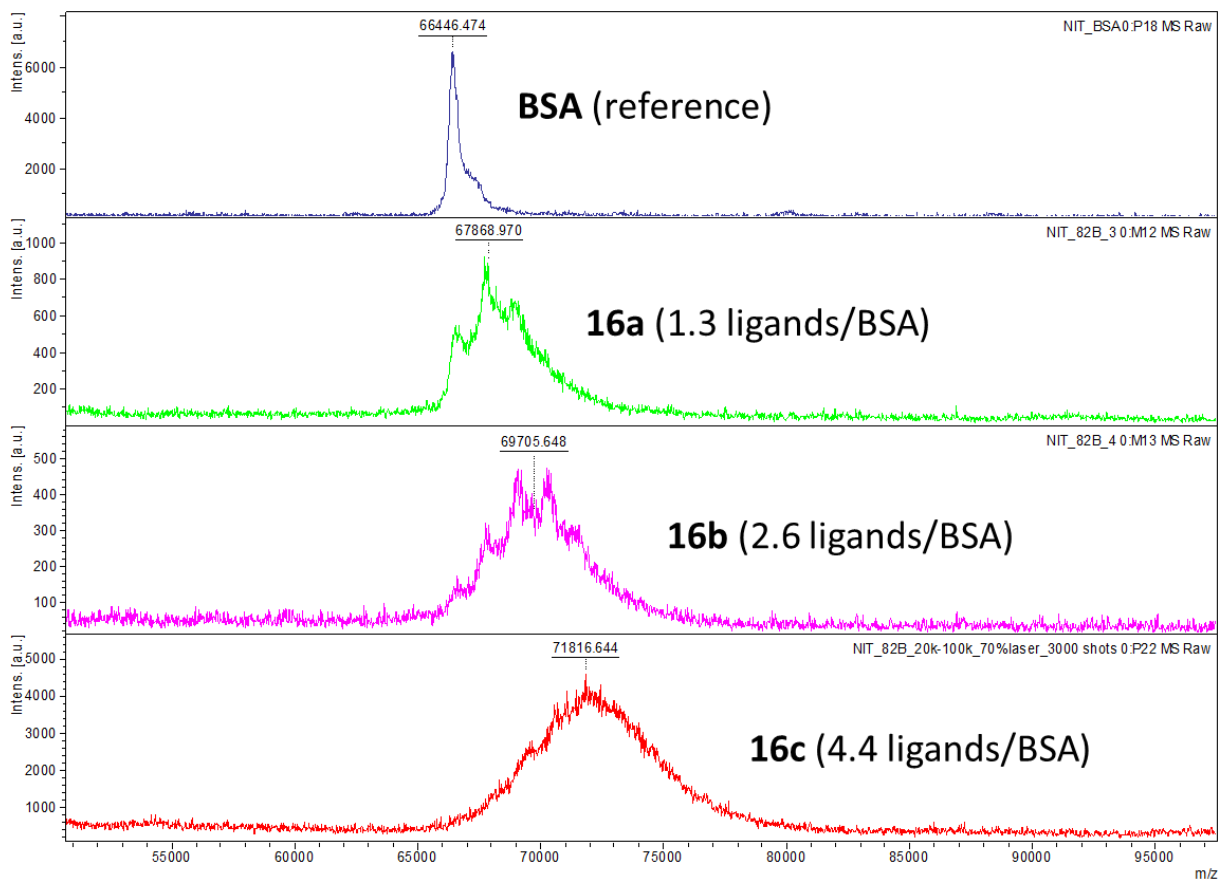
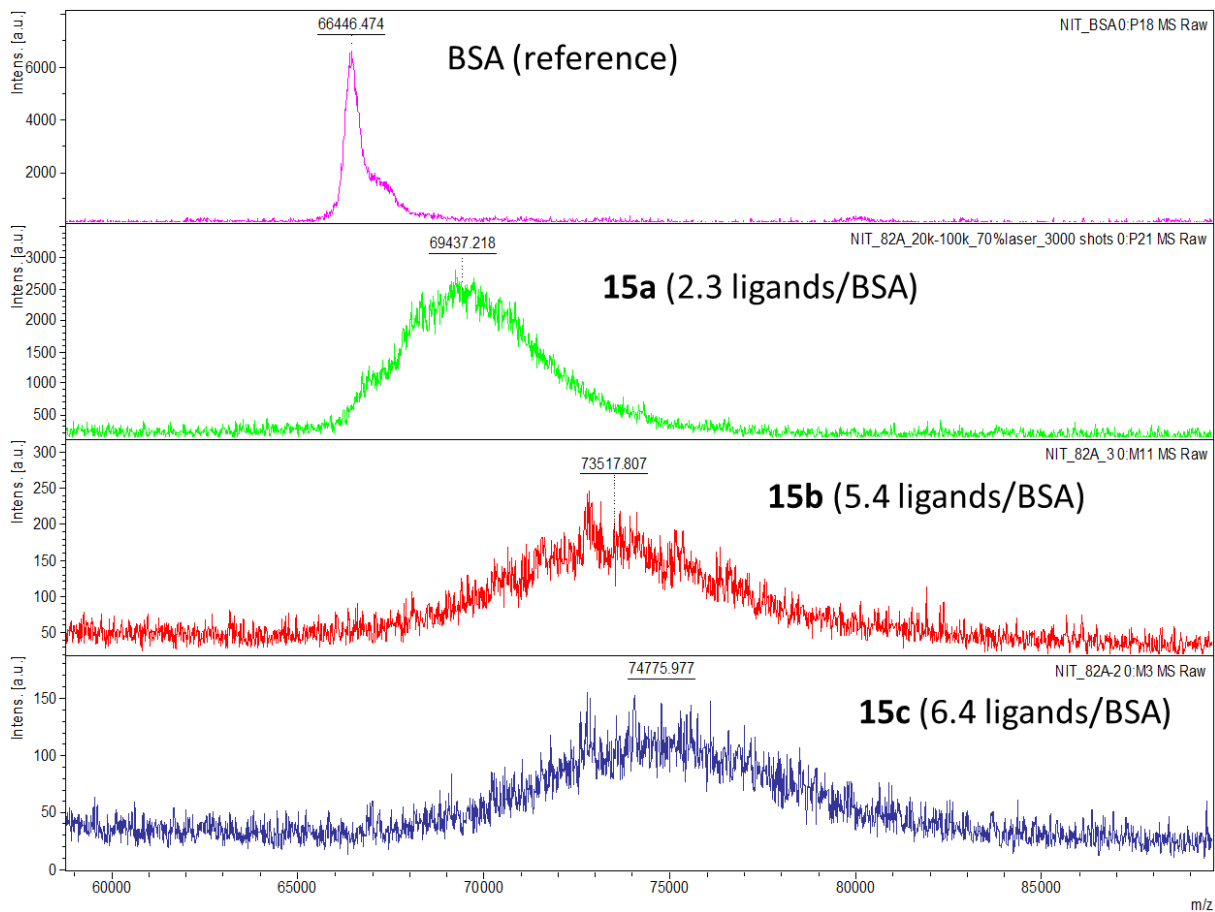
29





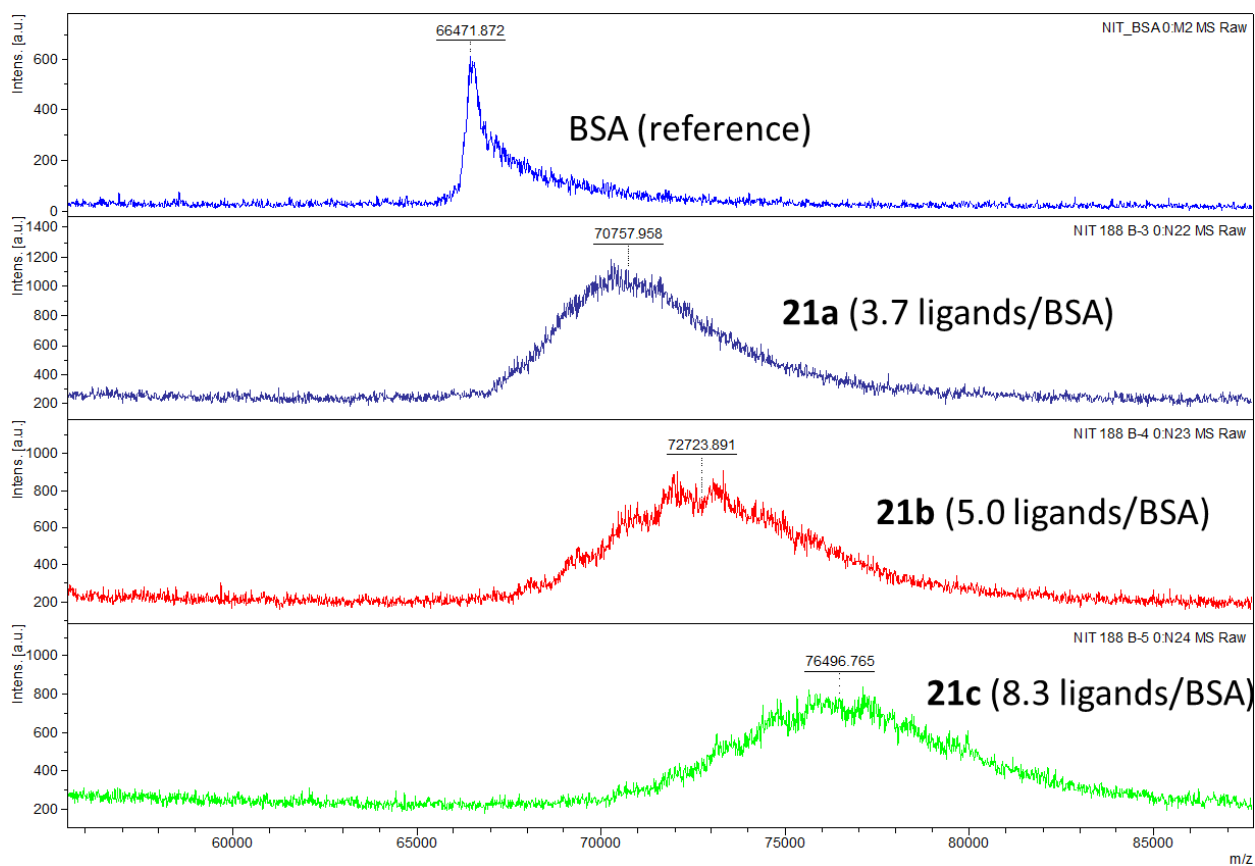
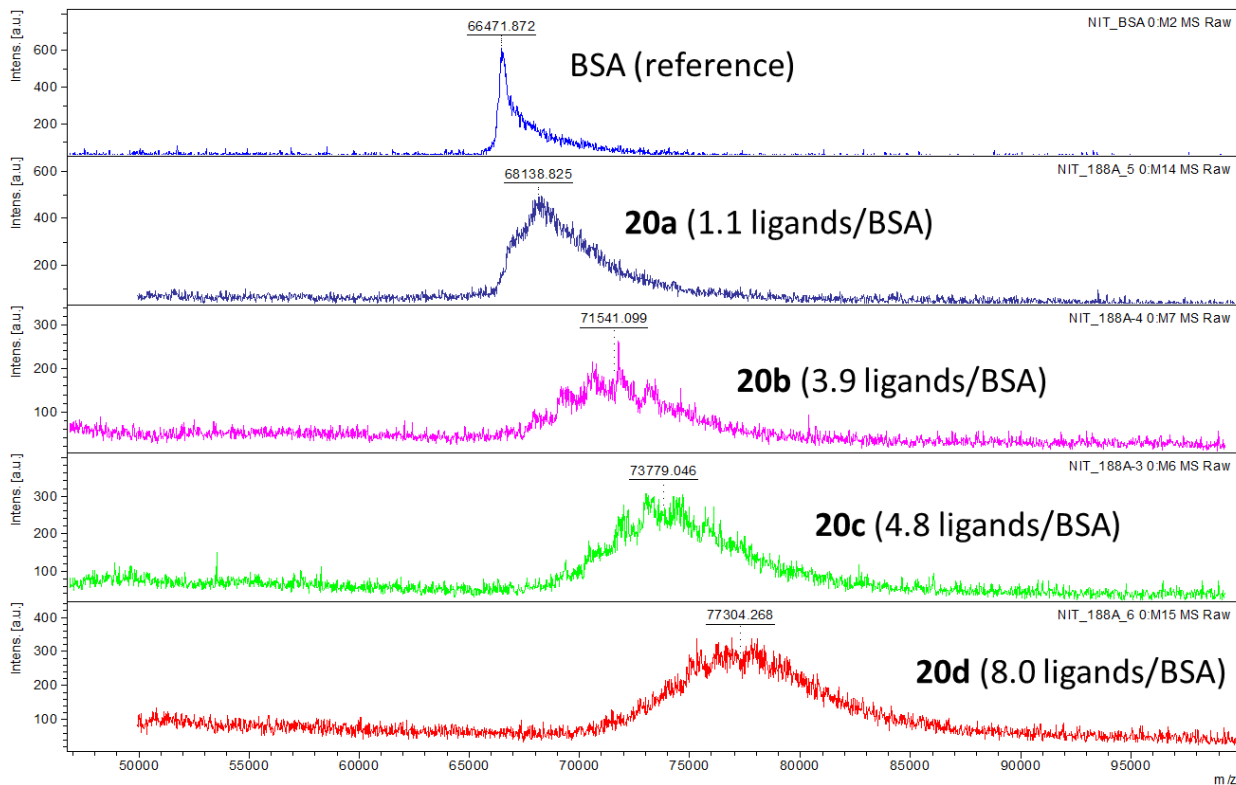


MALDI MS spectra of conjugates **13**, **14**, **17** and **18**.

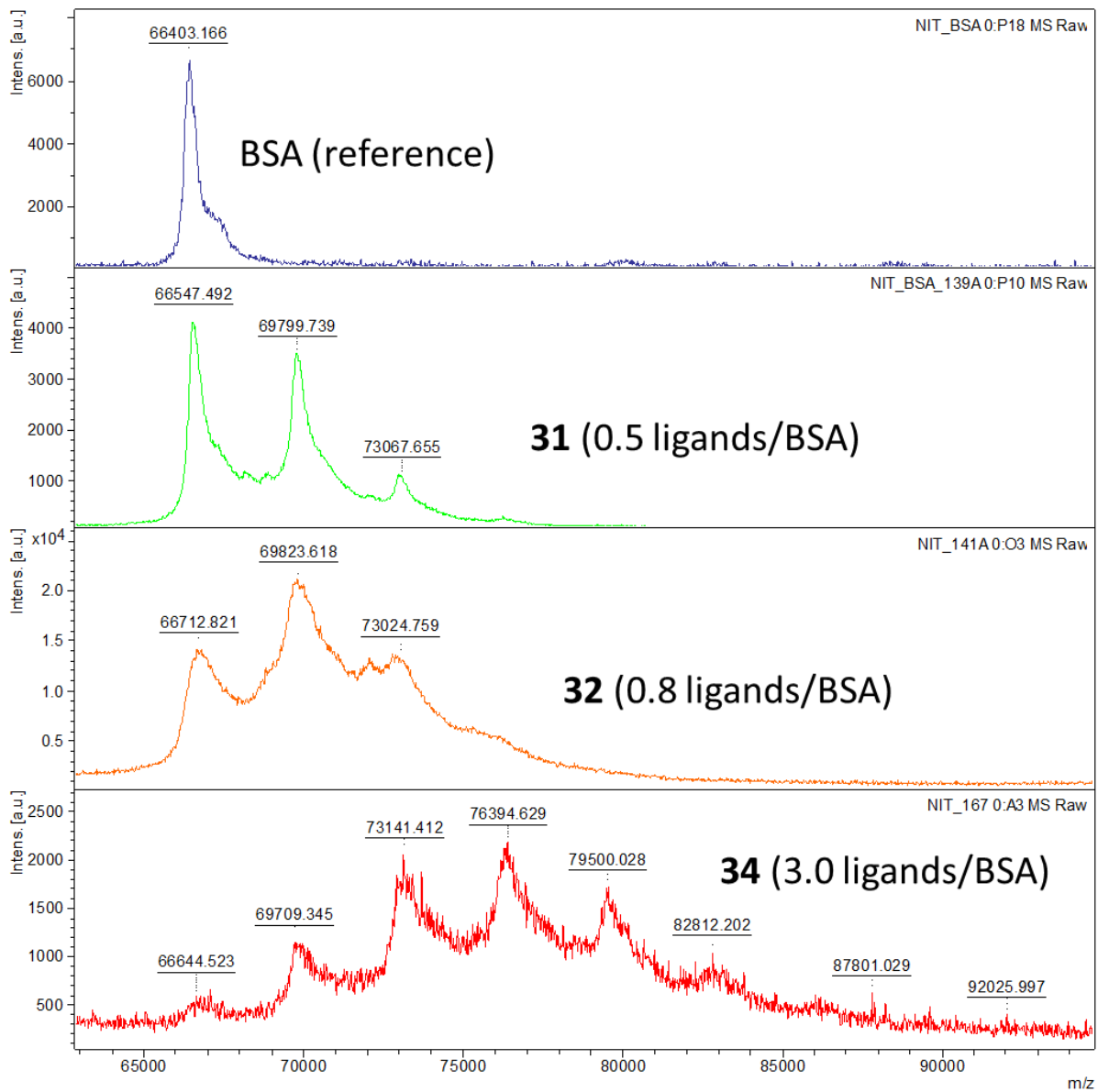


MALDI MS spectra of conjugates **15a-c** and **16a-c**

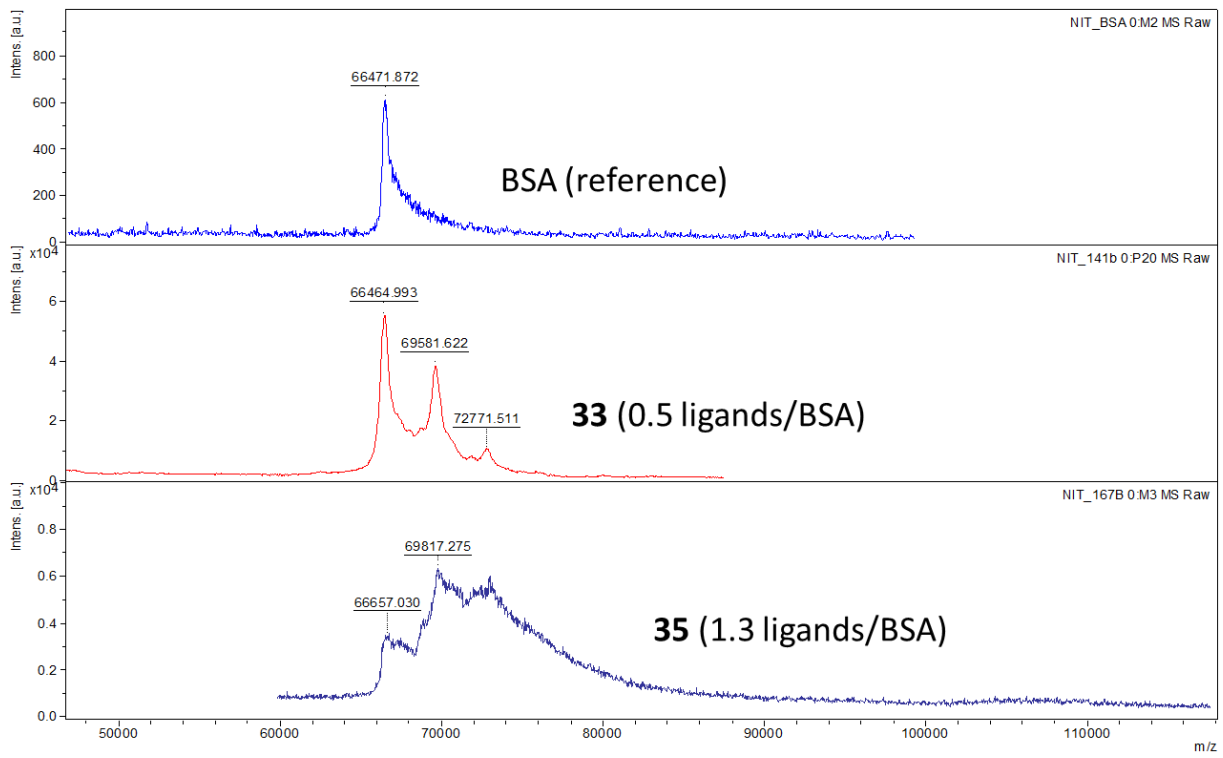




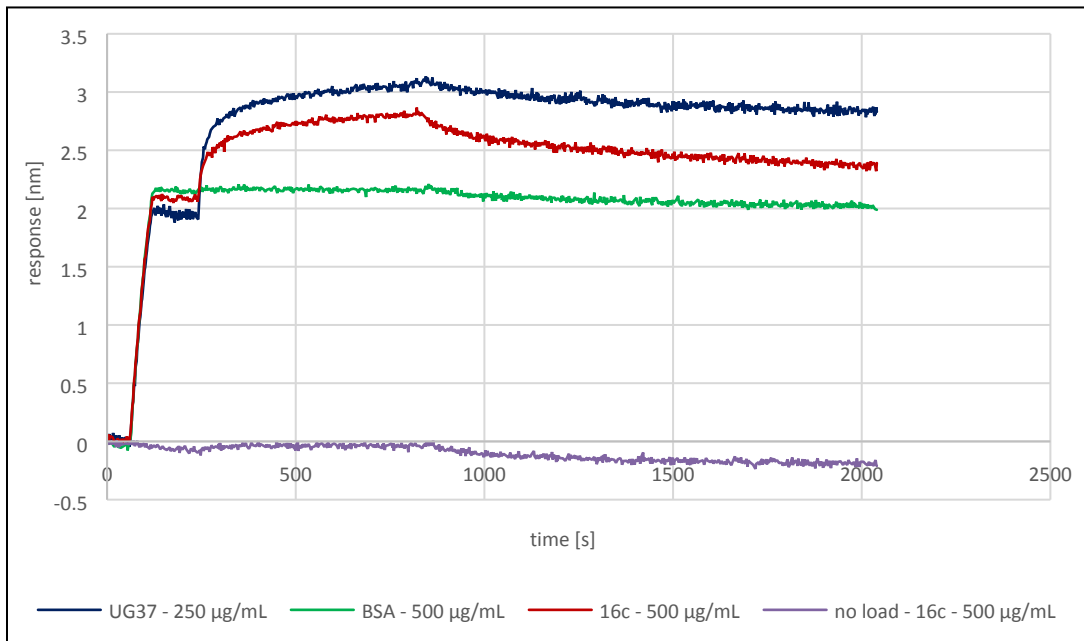
MALDI MS spectra of conjugates **20a-d** and **21a-c**



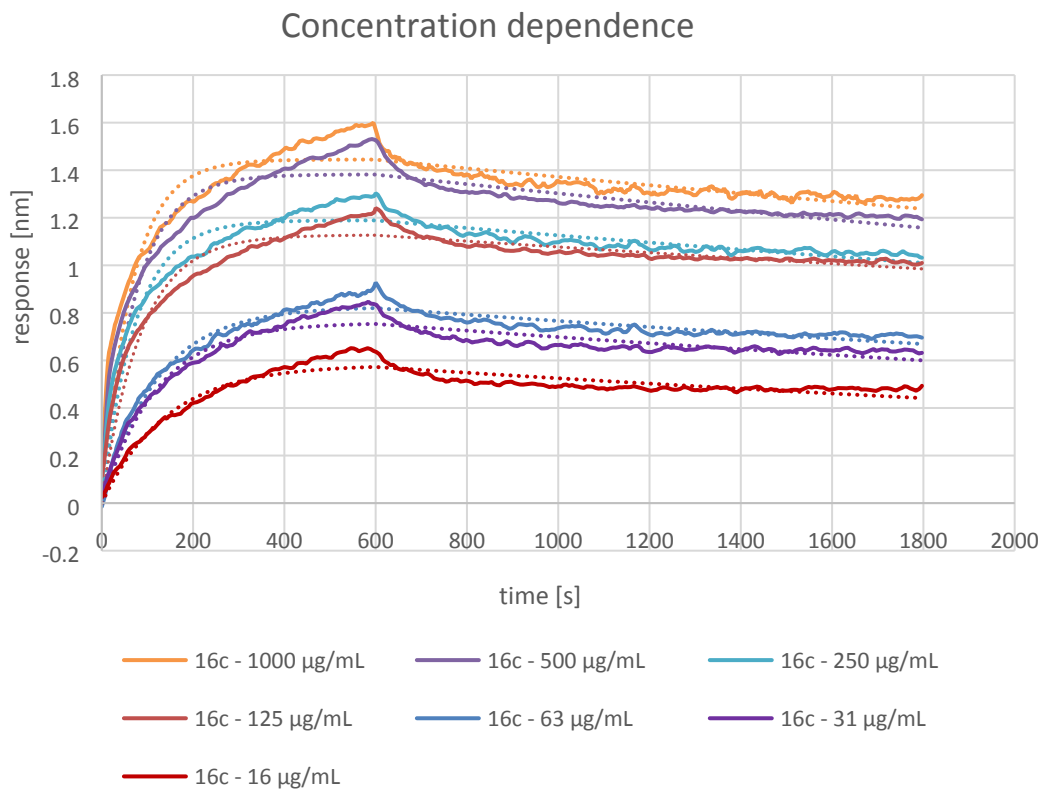
MALDI MS spectra of conjugates **31**, **33** and **34**.



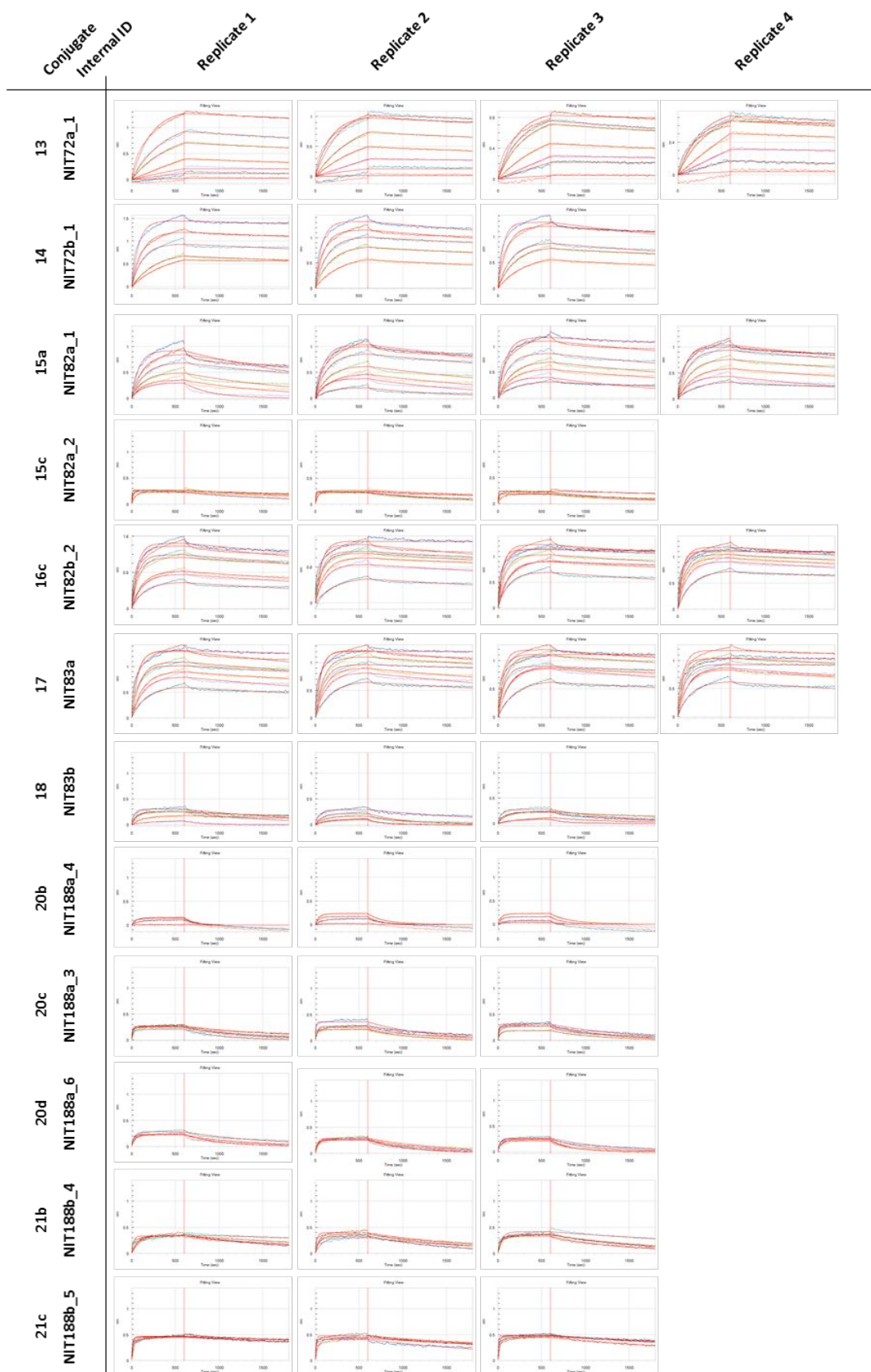
MALDI MS spectra of conjugates **33** and **35**.



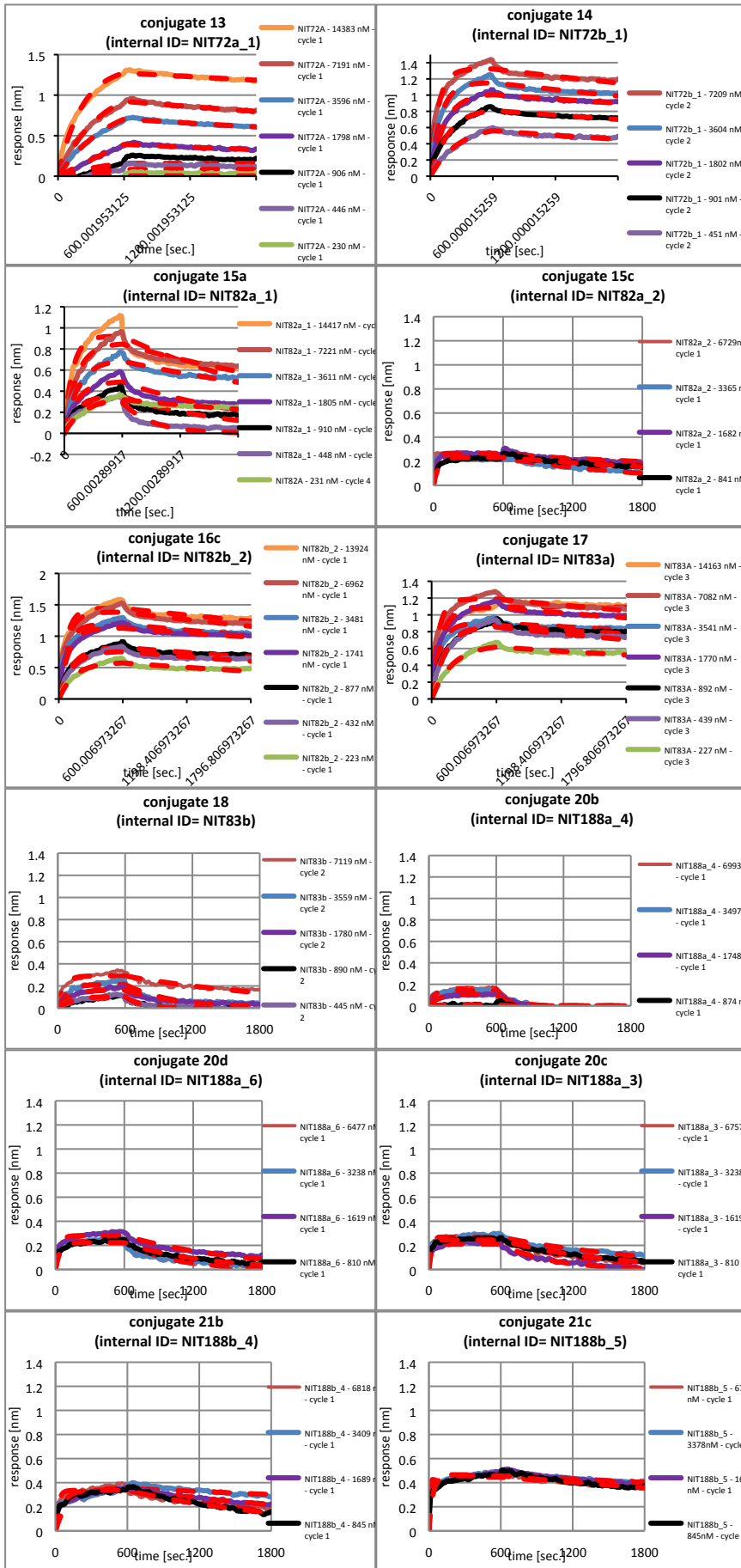
BLI sensorgram of binding interactions with UG37 and 16c including controls (BSA)



BLI sensorgram of binding interactions with 16c at different concentrations.



Association- and dissociation curves of selected conjugates including 1:1 binding model fit (red lines). All conjugates were measured as 3 to 4 replicates per compound using biolayer-interferometry (Octet).



Close-up view of selected association- and dissociation curves measured by BLI. Fitting of the 1:1 binding model is represented as dashed, red lines at different conjugate concentrations.

**Supplementary Table S2.** Oligonucleotide primers used in this study.

---

2G12HC_Bsal_fw	5'-gtacggctctcaaggtgaggtgcagctggtggagtctgg-3'
2G12HC_Bsal_rv	5'-gctaggtctcaaagctcatttaccggagacagggag-3'
2G12LC_Bsal_fw	5'-gtacggctctcaaggtgatgttgatgatgactcagtctcc-3'
2G12LC_Bsal_rv	5'-gctaggtctcaaagcctaacactctcccctgttgaagc-3'
2G12HC_I19R_fw	5'-ggcgggaggatccctcagactctcctgtggagtctc-3'
2G12HC_I19R_rv	5'-gactccacaggagagtctgaggatcctcccgccttg-3'

---