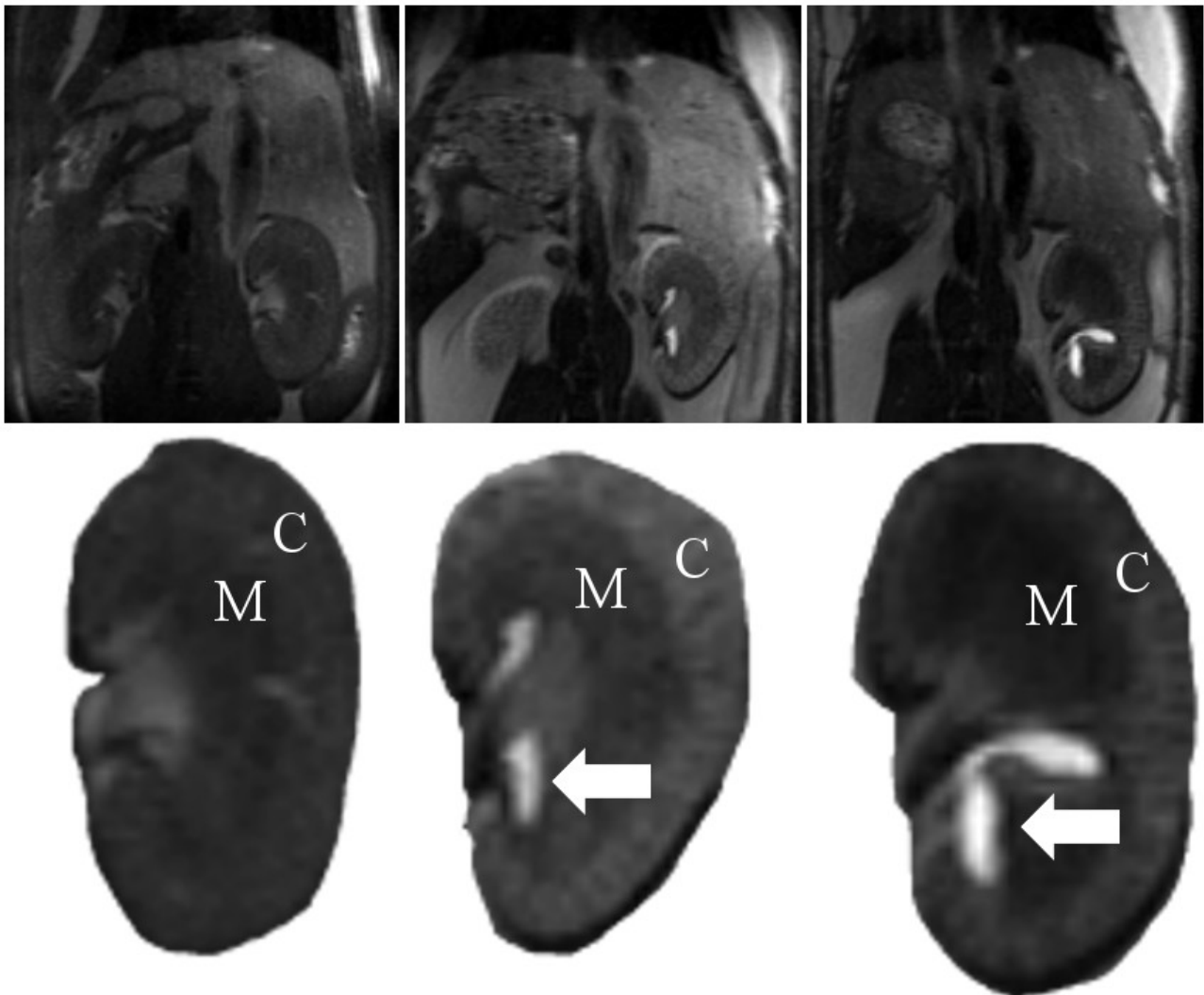


SUPPLEMENTARY DATA

Supplementary Figure 1. DCE-MRI of 57min post Gd-EOB-DTPA inject for control mice, C57BL6 and FVB. The left column is a representative C57BL6 mouse at the end of the imaging protocol, little enhancement can be observed within the medulla (M) or cortex (C) of the kidney. The right two columns are images from FVB mice. The middle images are from a representative FVB mouse, contrary to the other control animals, contrast is still observed within the cortex of the kidney at 57min post-injection. Additionally, pockets of high contrast can be observed close to the renal pelvis denoted by an arrow. The right-most images are from an FVB mouse with an enlarged kidney and exaggerated pocket of contrast denoted by an arrow. These regions were not included in the ROIs drawn for analysis.

C57BL6

FVB



SUPPLEMENTARY DATA

Supplementary Figure 2.

