

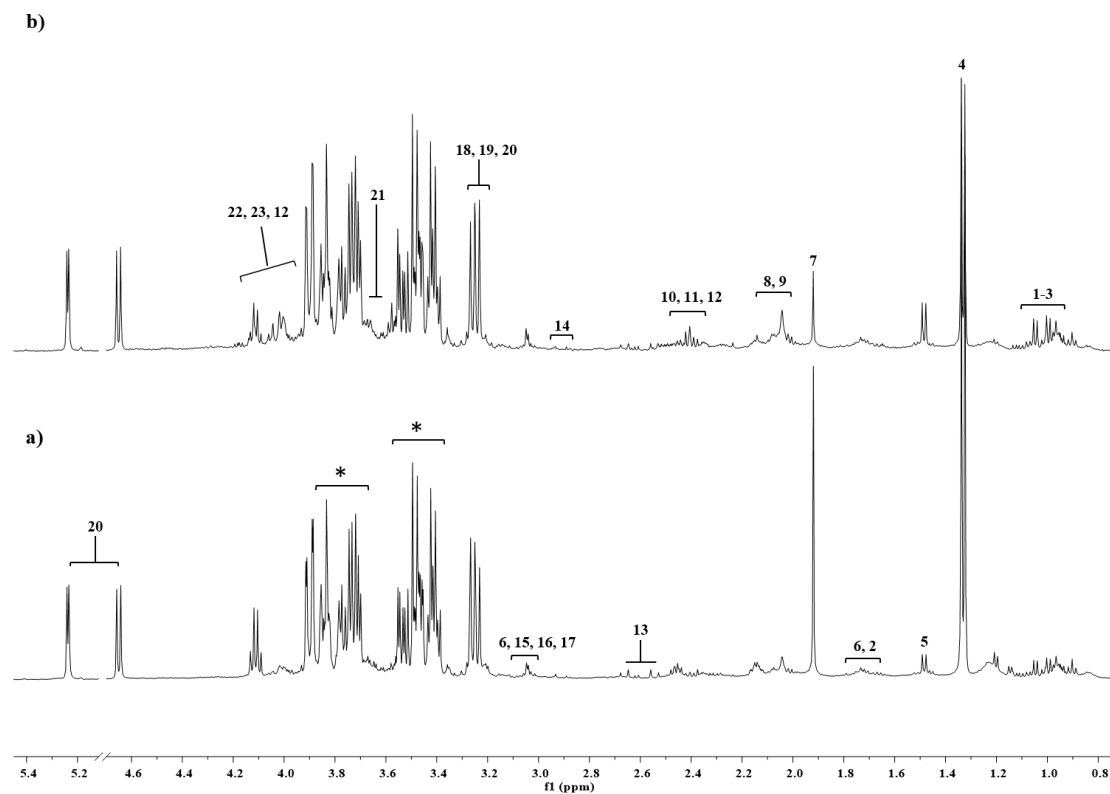
Metabolomic fingerprint of coronary blood in STEMI patients

depends on the ischemic time and inflammatory state

**^aMartino Deidda, MD PhD; ^bCristina Piras, PhD; ^cGiulio Binaghi, MD PhD;
^cDamiana Congia, MD; ^cAlessandro Pani, Md; ^dAlberto Boi, MD; ^dFrancesco
Sanna, MD; ^dAngelica Rossi, MD; ^dBruno Loi, MD; ^aChristian Cadeddu
Dessalvi, MD PhD FESC; ^bLuigi Atzori, MD; ^cMaurizio Porcu, MD FESC;
^aGiuseppe Mercurio, MD**

^a Department of Medical Sciences and Public Health, University of Cagliari; ^b
Department of Biomedical Sciences, University of Cagliari; ^c Department of
Cardiology, G. Brotzu Hospital; ^d Catheterization Lab, G. Brotzu Hospital, Cagliari,
Sardinia, Italy

Figure 1S. 500 MHz ^1H NMR spectra of plasma extracts obtained from a) short total ischemic time b) long total ischemic time.



Peaks: 1, Isoleucine; 2, Leucine; 3, Valine; 4, Lactate; 5, Alanine; 6, Lysine; 7, Acetate; 8, N-acetylgroups; 9, Proline; 10, Glutamine; 11, Glutamate; 12, Pyroglutamate; 13, Citrate; 14, Asparagine; 15, Creatine; 16, Creatinine; 17, Ornithine; 18, Choline; 19, Phosphocholine; 20, Glucose; 21, Myo-Inositol; 22, 2-phosphoglycerate; 23, Serine. * Resonances of contrast agent.