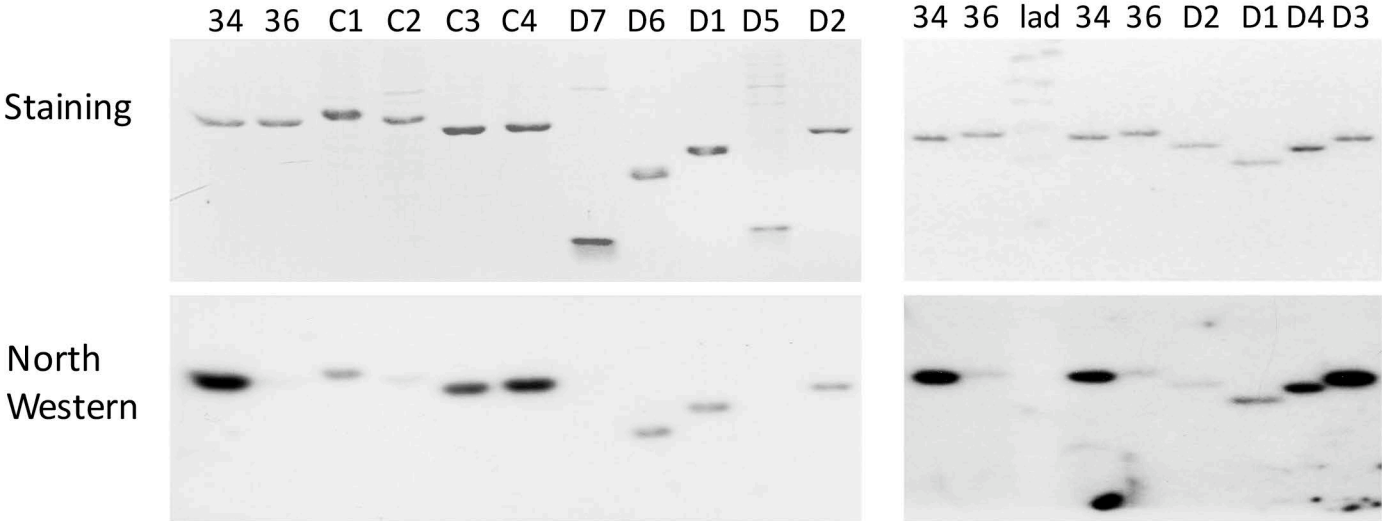
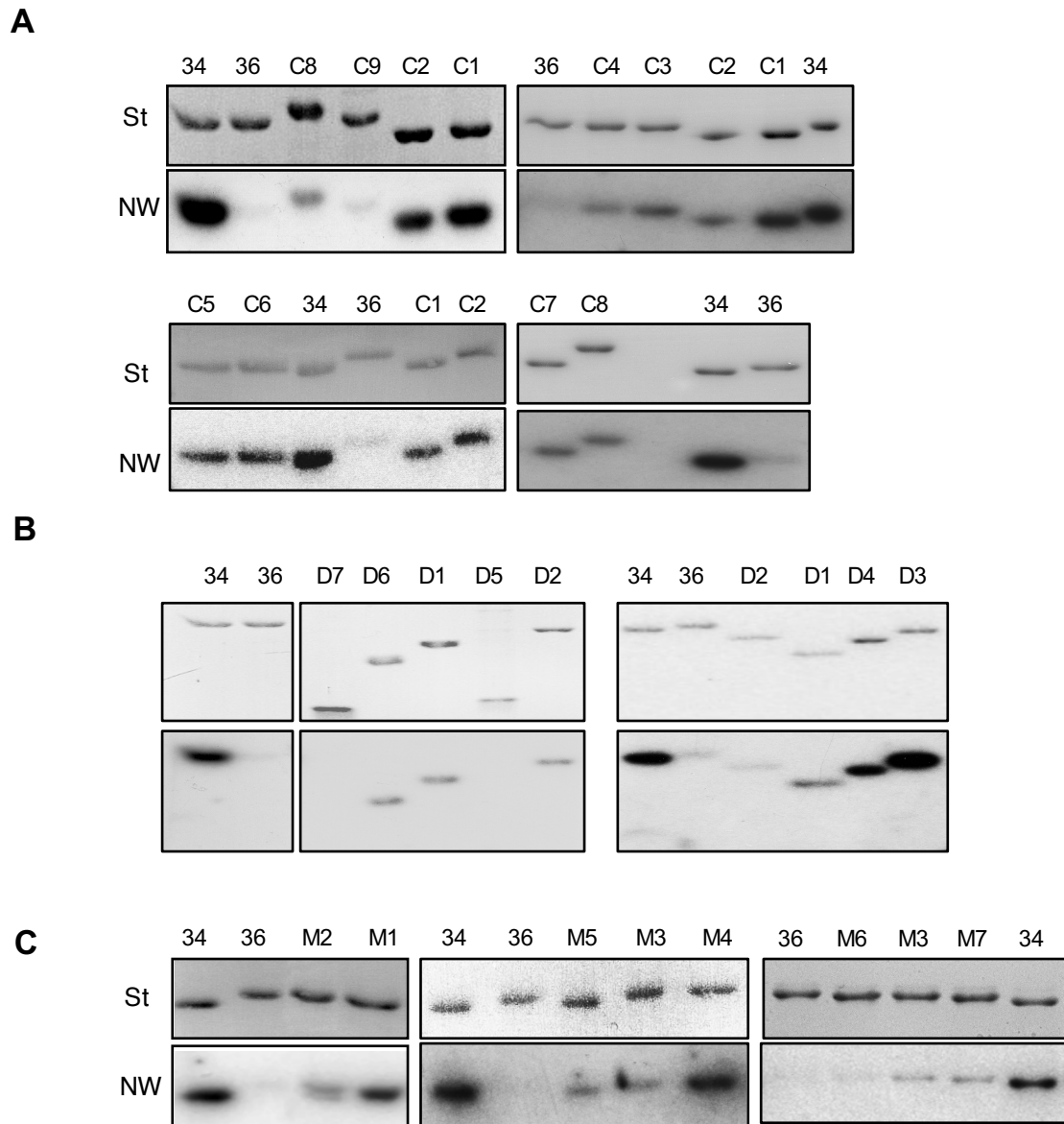


# Raw data Suppl. Figure 4B



# Supplemental Figure S4



## Figure S4. Northwestern analysis with mutant proteins.

Examples of Northwestern analysis with (A) chimeric mutants, (B) deletion mutants and (C) point mutants are given. (St) corresponds to the Coomassie blue staining of overexpressed proteins, fractionated on a SDS-PAGE and electroblotted on Immobilon-P membrane. (NW) corresponds to the Northwestern blot analysis. The proteins fixed on the membrane were renatured and incubated with radiolabeled cytosolic *A. thaliana* tRNA<sup>Ala</sup> transcripts.