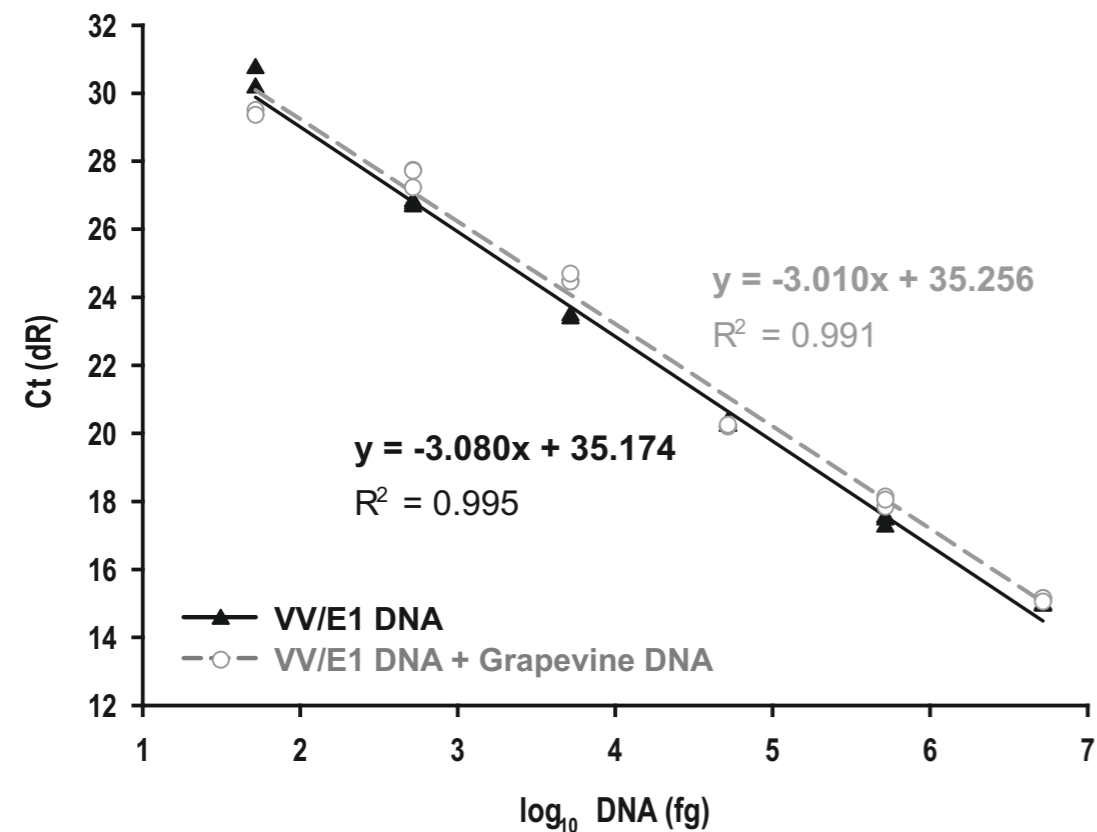
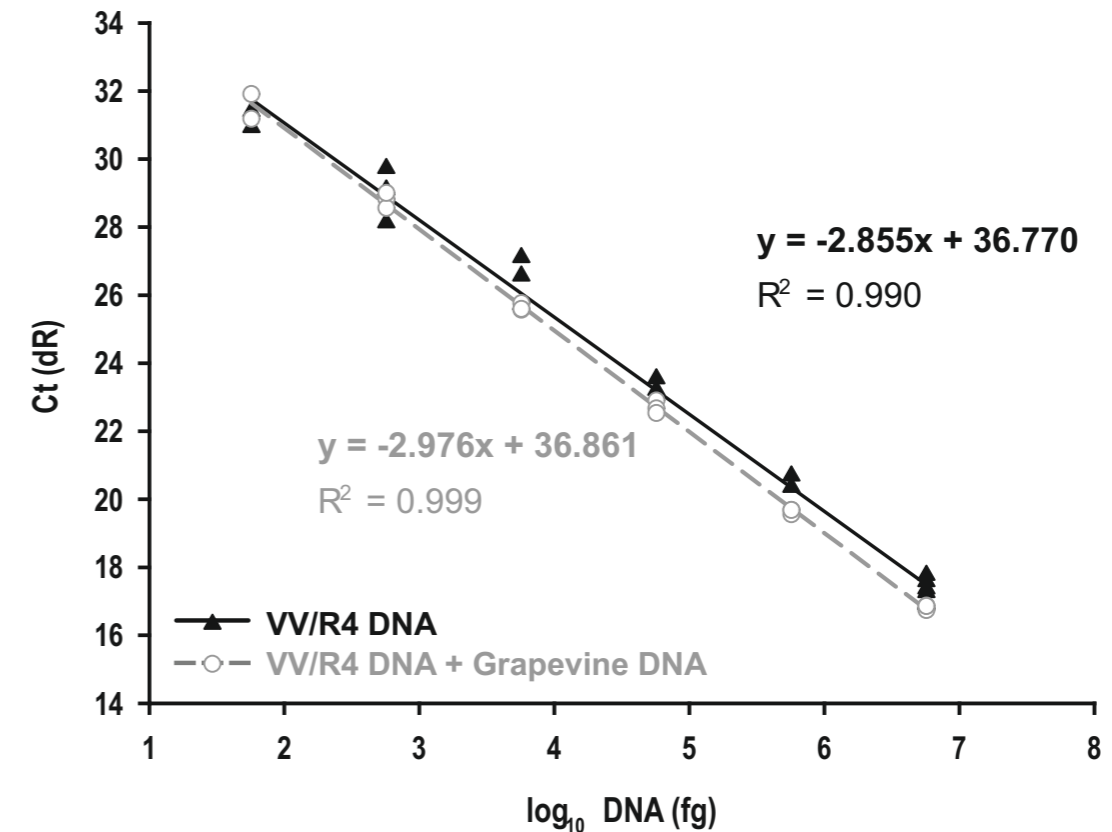


A**B**

S5 Fig. qPCR standard curves supplemented with grapevine genomic DNA. Standard curves obtained by SYBR Green qPCR using the primer sets that amplified the SCAR markers and generated with 10-fold serial dilutions of genomic DNA from (A) VV/E1 and (B) VV/R4 strains are shown in black lines. Grey lines correspond to the curves generated in the presence of grapevine genomic DNA. The final ratio of actinobacteria-to-grapevine DNA ranged from 1:1 to 1:100,000.