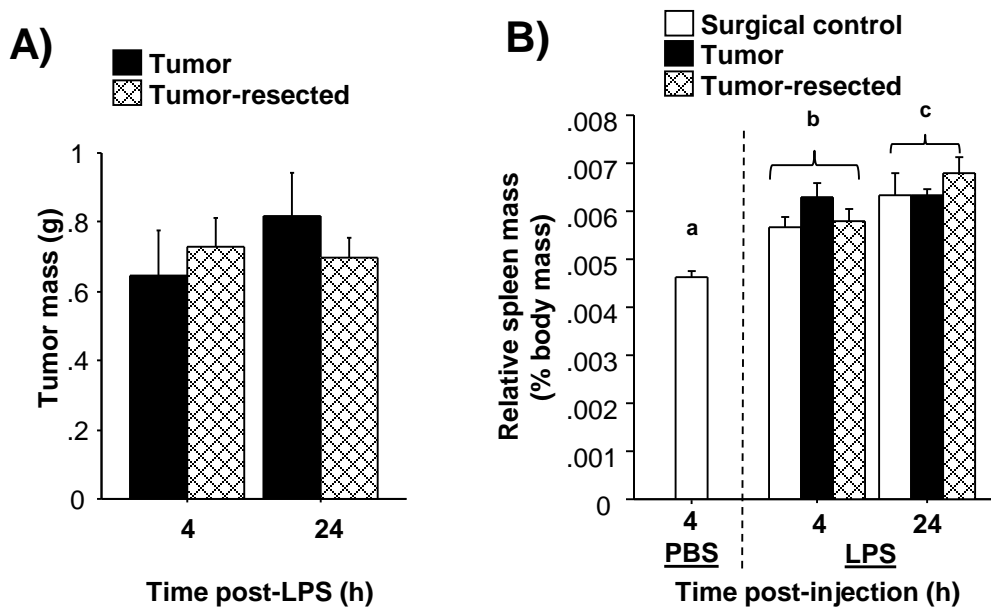


Tumor resection ameliorates tumor-induced suppression of neuroinflammatory and behavioral responses to an immune challenge in a cancer survivor model

Jessica C. Santos, Savannah R. Bever, Gabriela Pereira-da-Silva, Leah M. Pyter

SUPPLEMENTARY FIGURE 1



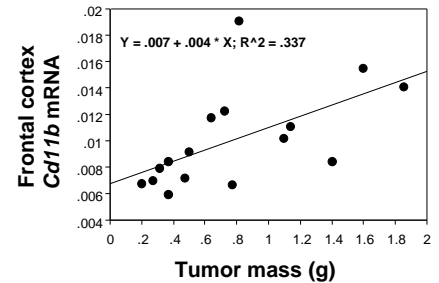
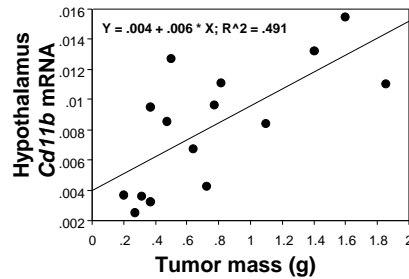
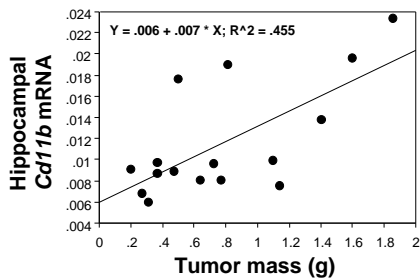
Supplementary Figure 1. Effects of complete mammary tumor resection on spleen masses. Mean \pm SEM (A) tumor mass taken at surgical resection (tumor-resected) or final tissue collection (tumor), (B) spleen mass relative to body mass in PBS-treated, tumor-free controls or 4 or 24 h post-LPS among tumor treatments. $n=7-20$ /group; letters represent statistical differences.

Tumor resection ameliorates tumor-induced suppression of neuroinflammatory and behavioral responses to an immune challenge in a cancer survivor model

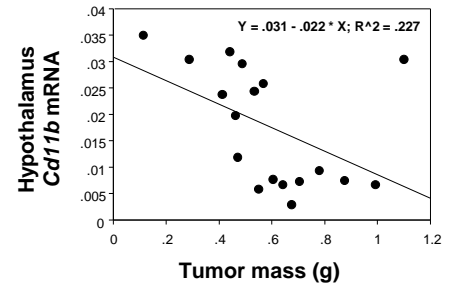
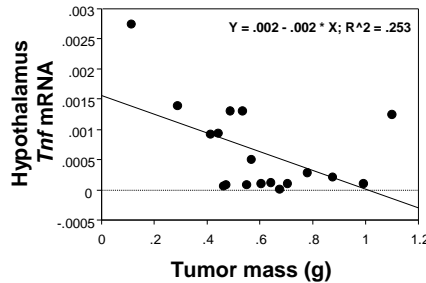
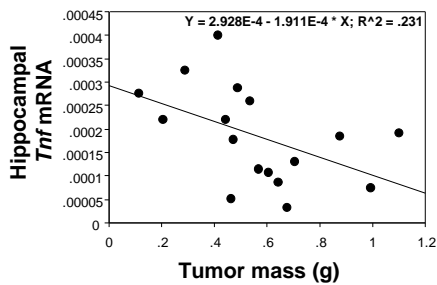
Jessica C. Santos, Savannah R. Bever, Gabriela Pereira-da-Silva, Leah M. Pyter

SUPPLEMENTARY FIGURE 2

A) Tumor only; 4 h post-LPS



B) Tumor-resected only; 24 h post-LPS



Supplementary Figure 2. Correlation between tumor mass and neuroinflammatory response to LPS challenge. Linear regressions between total mammary tumor mass, cortical and hippocampal *Cd11b* mRNA expression in tumor bearing mice 4 h after LPS injection (A). Correlation between prior tumor mass and the resolution of neuroinflammation in the hippocampus and hypothalamus 24 h post-LPS (B).