

Figure A. Representative normalized viability curves from one knockdown:addback experiment

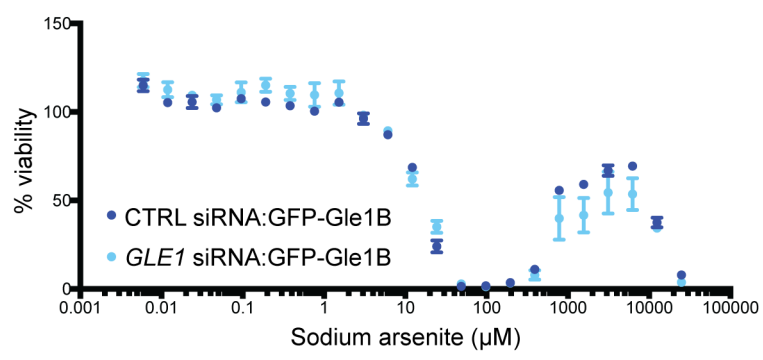
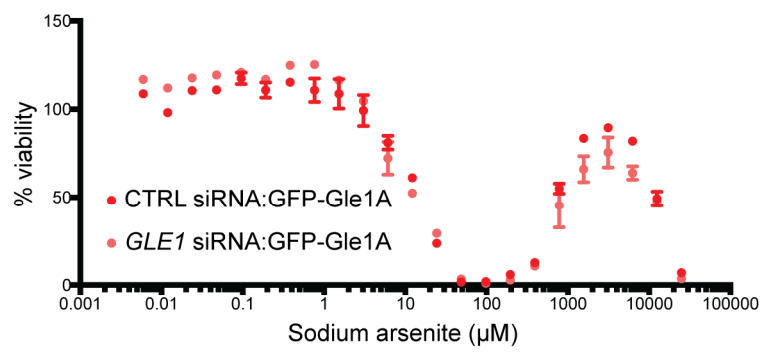
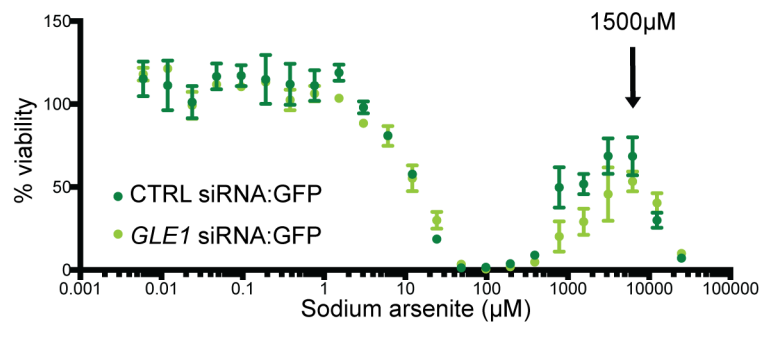
Representative survival response curves to sodium arsenite for 72 hours was assessed in CTRL or *GLE1* siRNA-treated HeLa cells exogenously expressing GFP, GFP-Gle1A or GFP-Gle1B. Each data point represents the average of 2 technical replicates (error bars denote range), normalized to duplicate untreated wells.

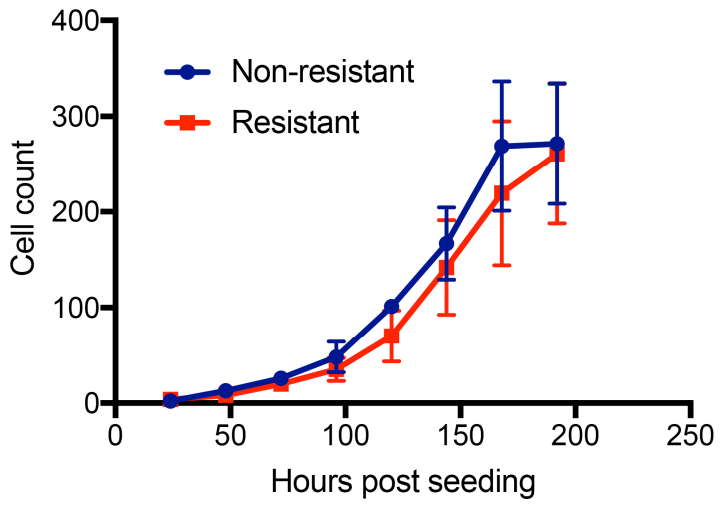
Figure B. Non-resistant and arsenite-resistant cells maintain comparable proliferation rates

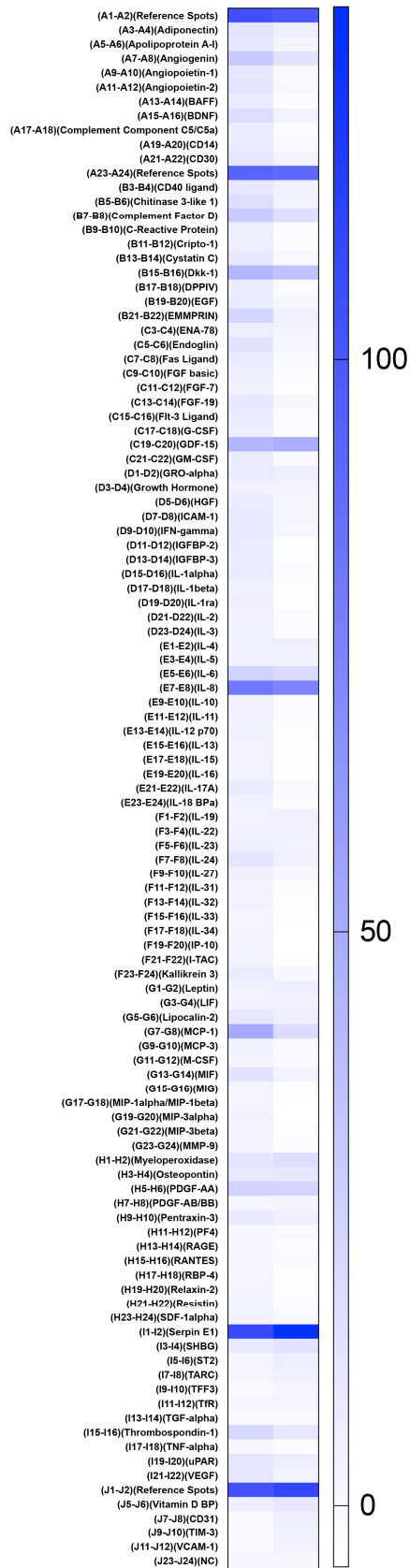
Cells were seeded at 1×10^4 cells/mL in 6-well plates. One well was harvested every 24 hours and cell counts performed. Cell count per 100 nL was plotted as a function of hours post seeding from three independent experiments.

Figure C. Levels of cytokines in conditioned media from non-resistant and arsenite-resistant cells

Conditioned media was generated from non-resistant and arsenite-resistant cells and tested for the presence of 104 human cytokines using a membrane-based antibody array. Each cytokine was tested in duplicate and normalized to an internal reference during analysis. The heat map represents mean amounts of cytokines detected from 4 independent experiments, where darker blue indicates increased concentration in the CM and lighter color indicates a lower concentration.







Non-resistant
Resistant