

Figure S1: Funnel plot for publication bias in RCTs assessing the effect of pregabalin in neuropathic pain. The broken line represents the mean difference for all trials.

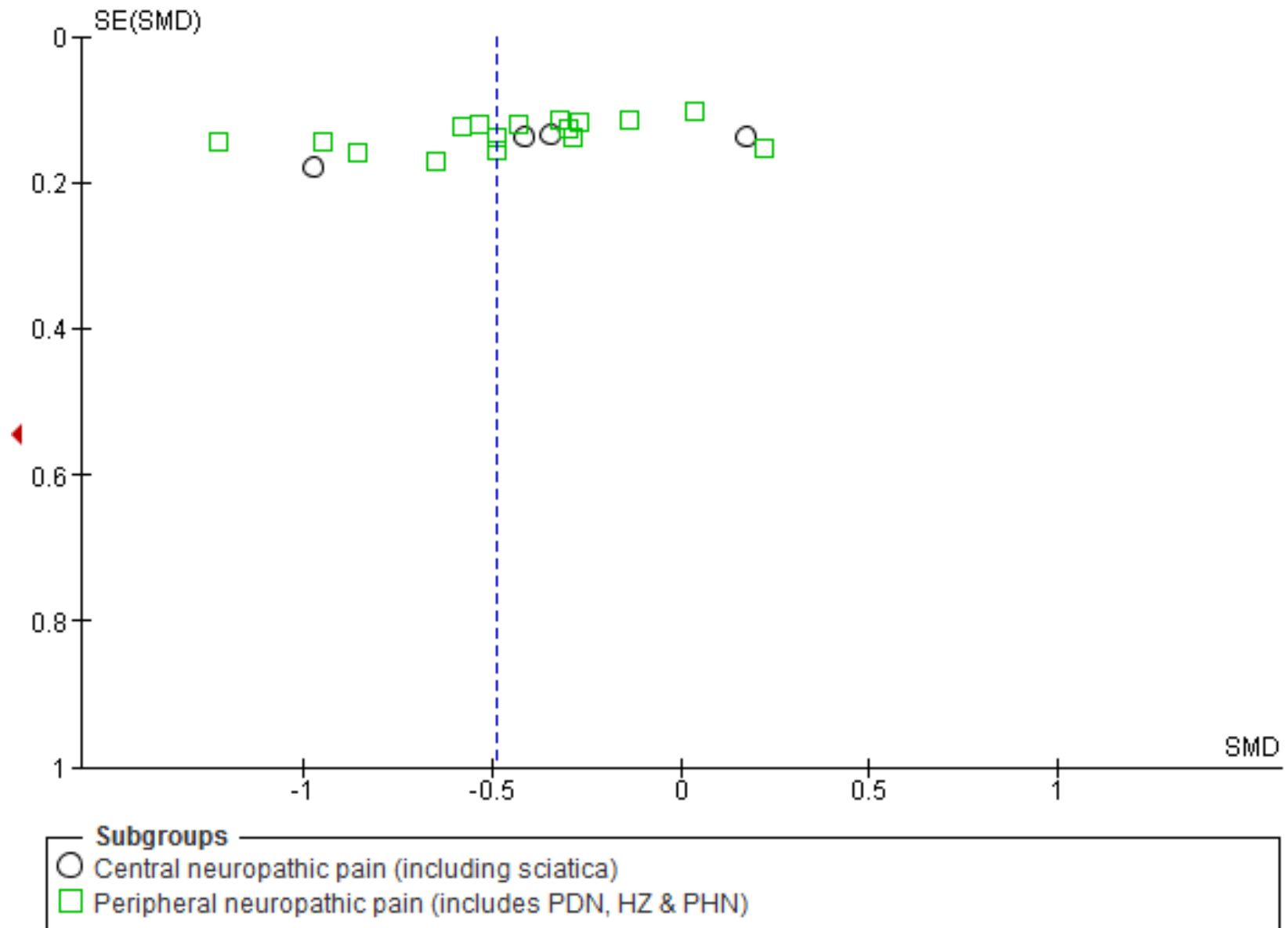


Figure S2: Effect of pregabalin on the risk of weight gain in patients with neuropathic pain

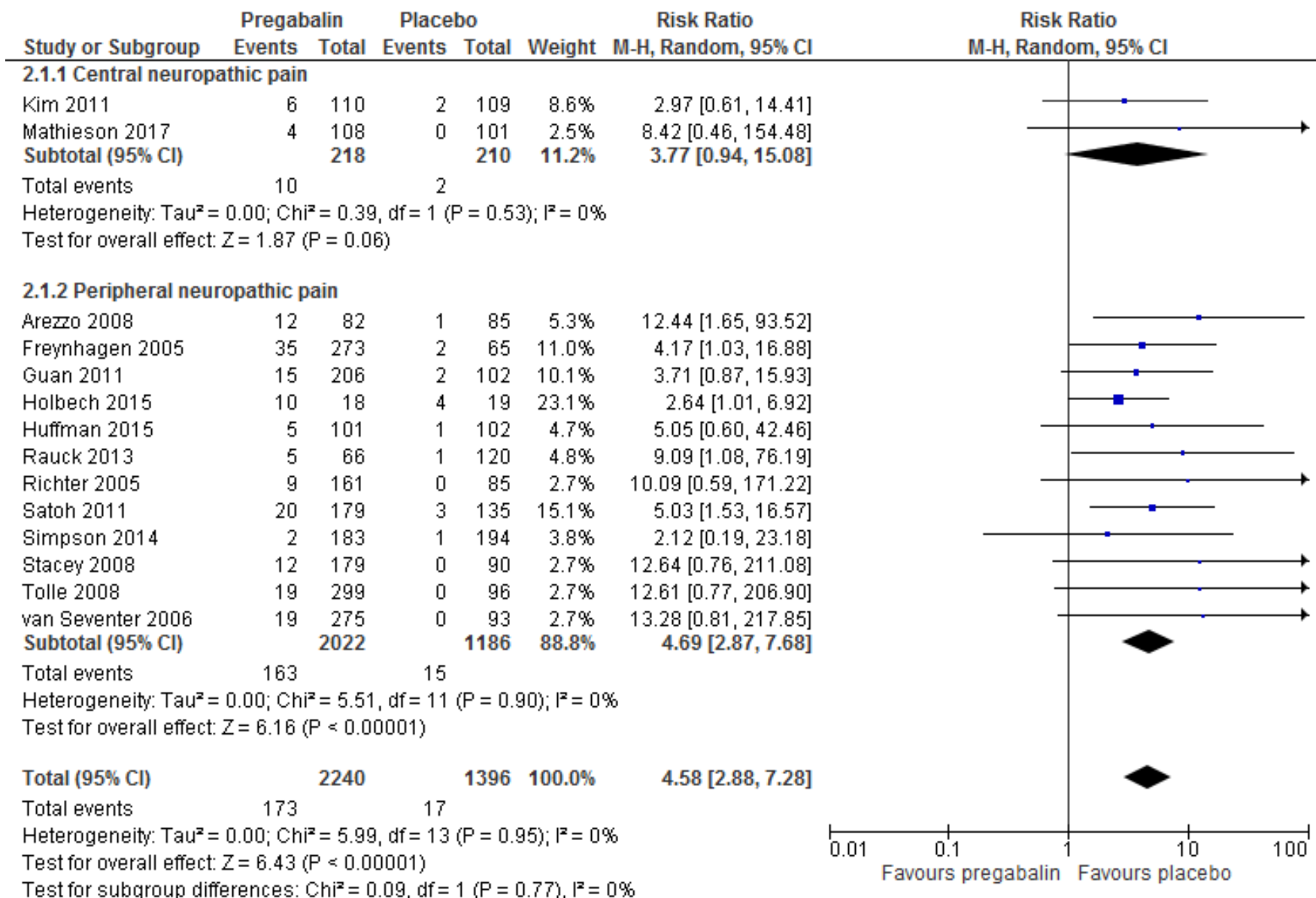


Figure S3: Effect of pregabalin on the risk of somnolence in patients with neuropathic pain

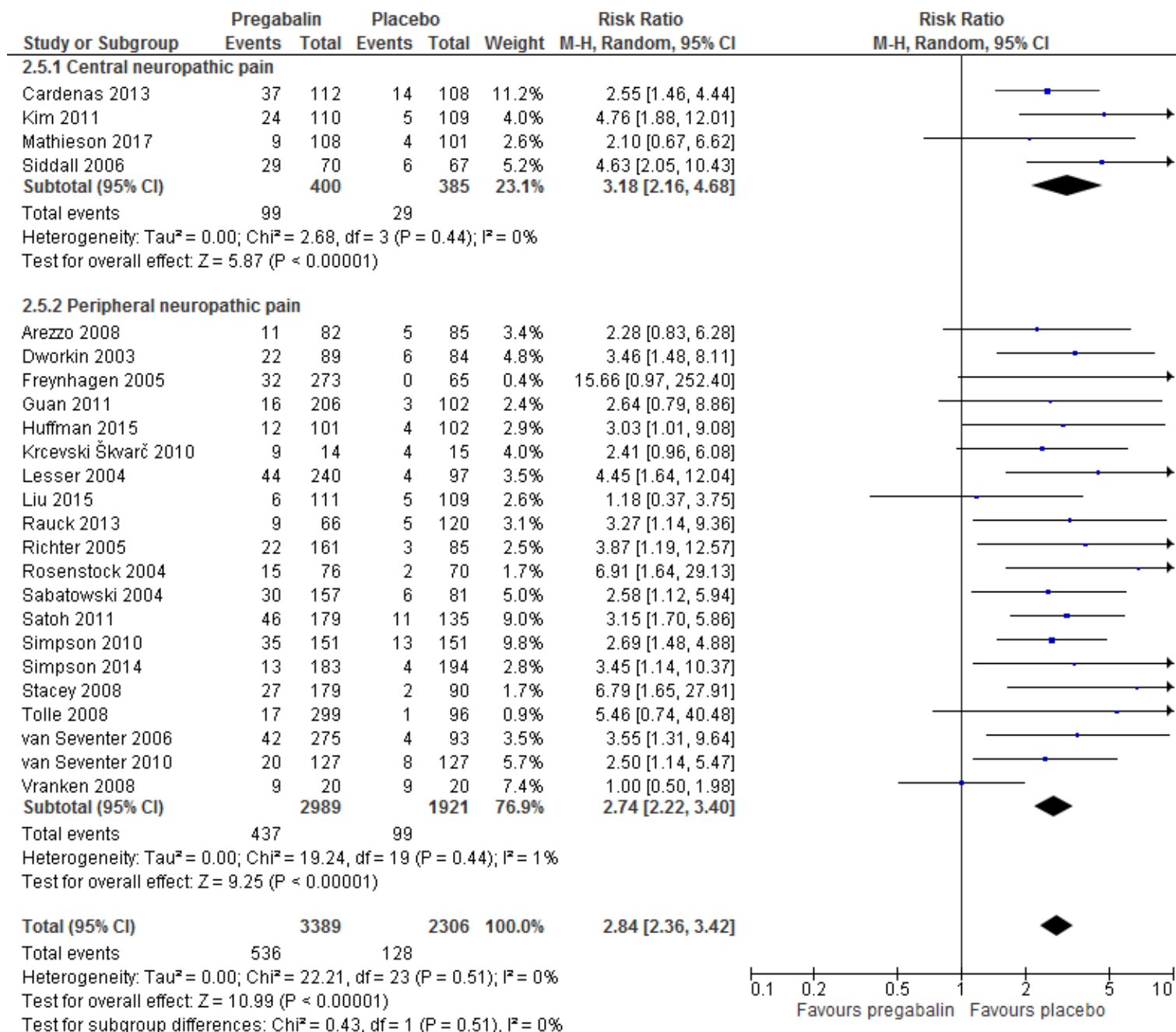


Figure S4: Effect of pregabalin on the risk of dizziness in patients with neuropathic pain

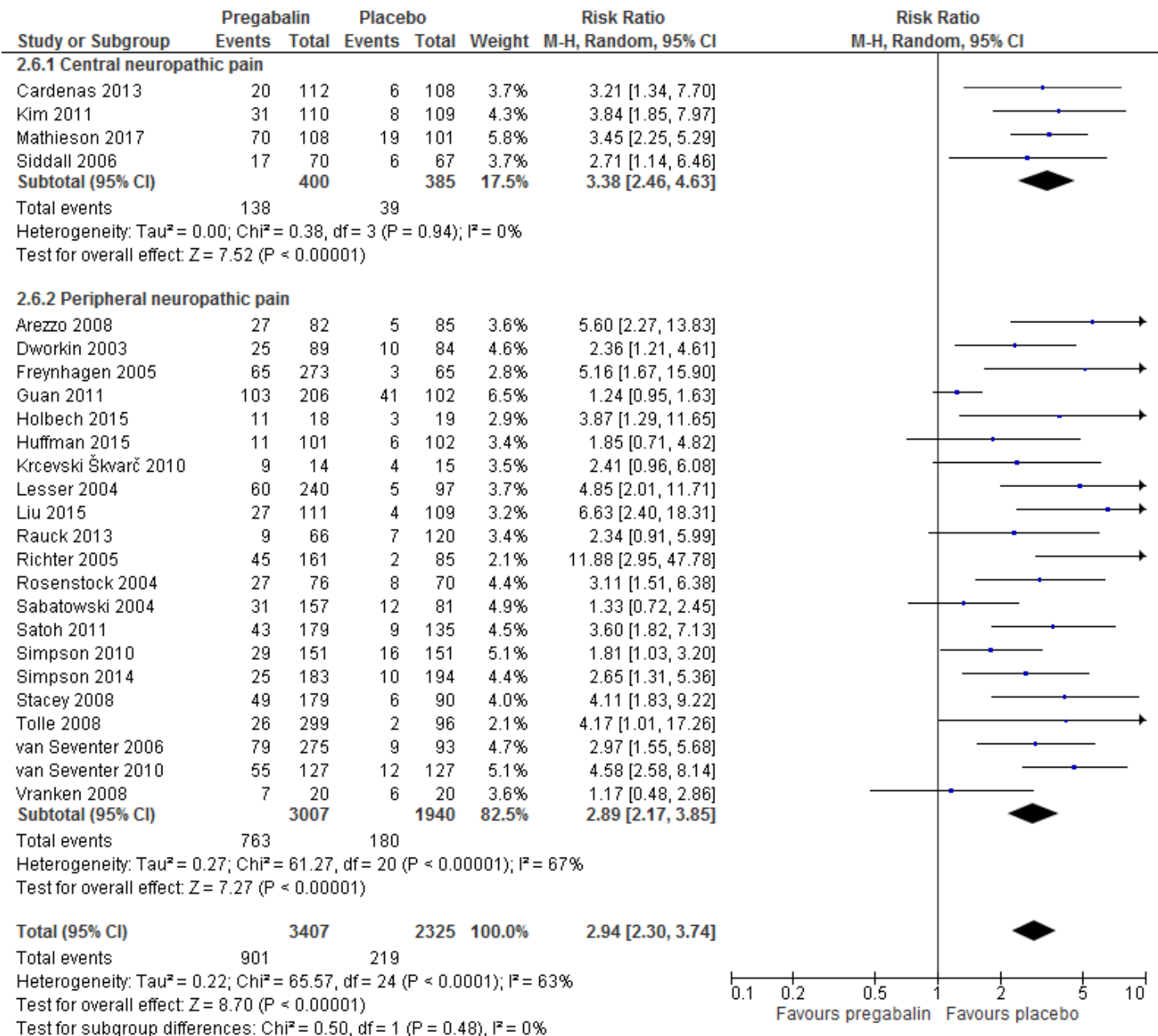


Figure S5: Effect of pregabalin on the risk of peripheral edema in patients with neuropathic pain

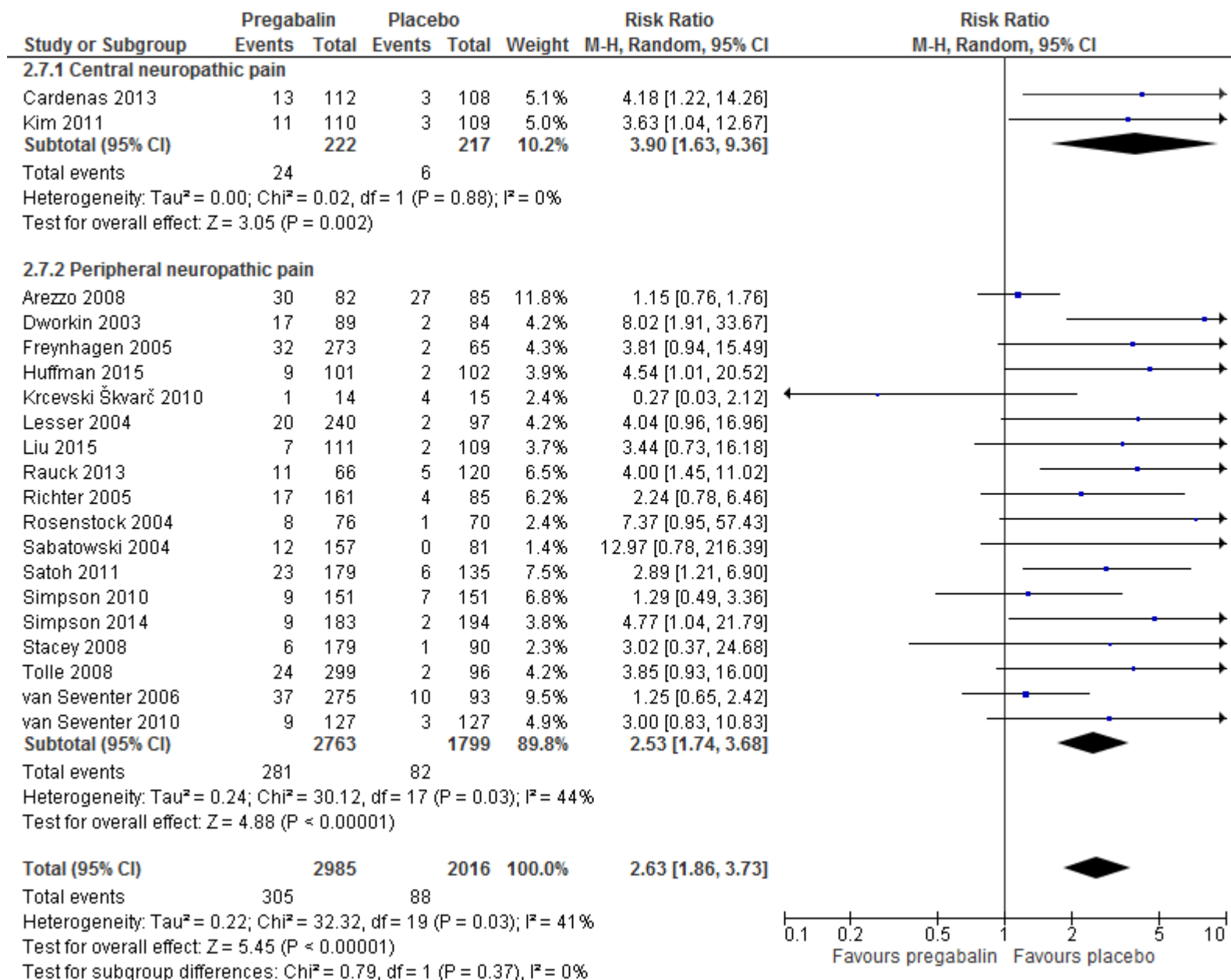


Figure S6: Effect of pregabalin on the risk of fatigue including asthenia in patients with neuropathic pain

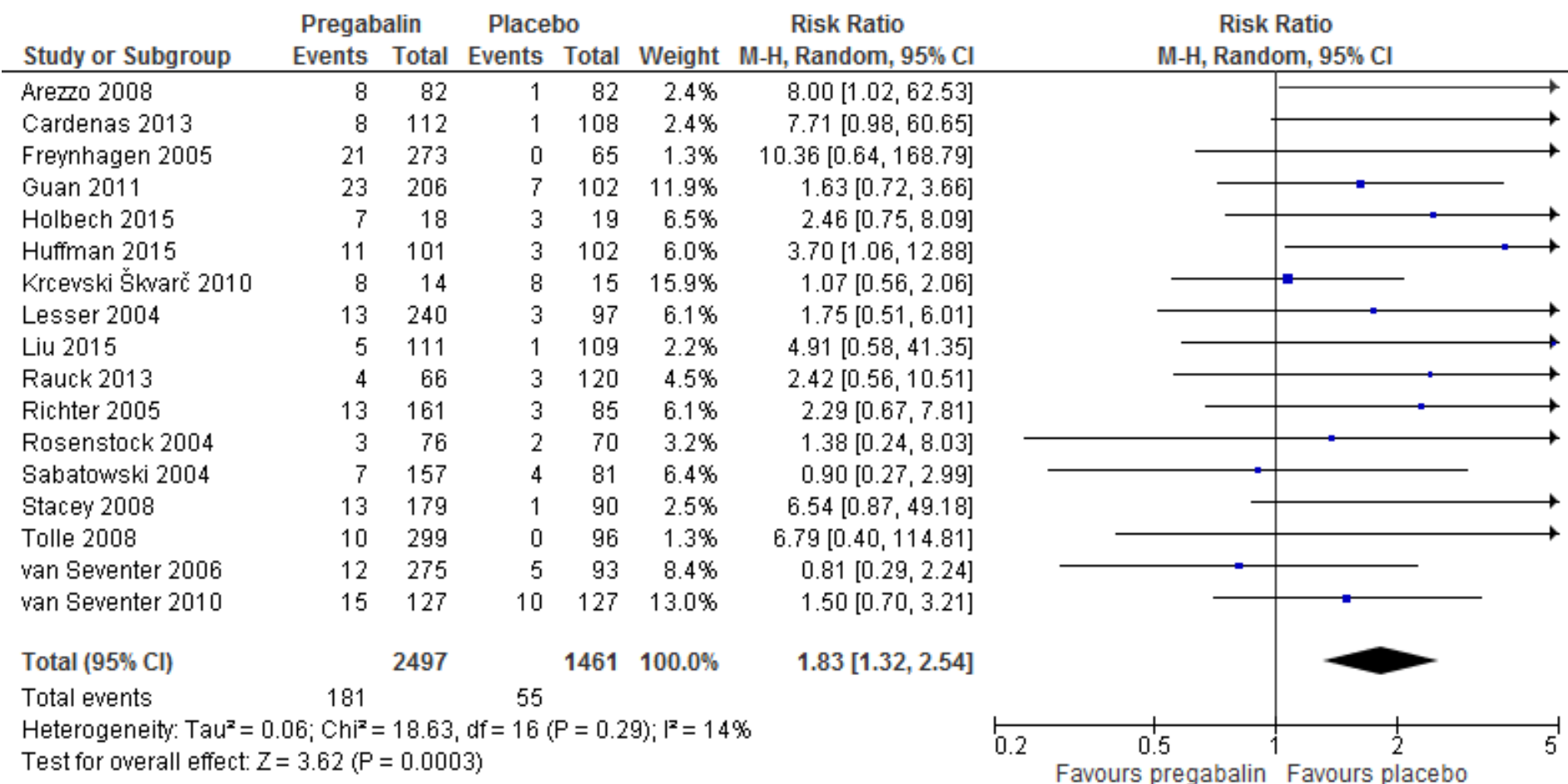
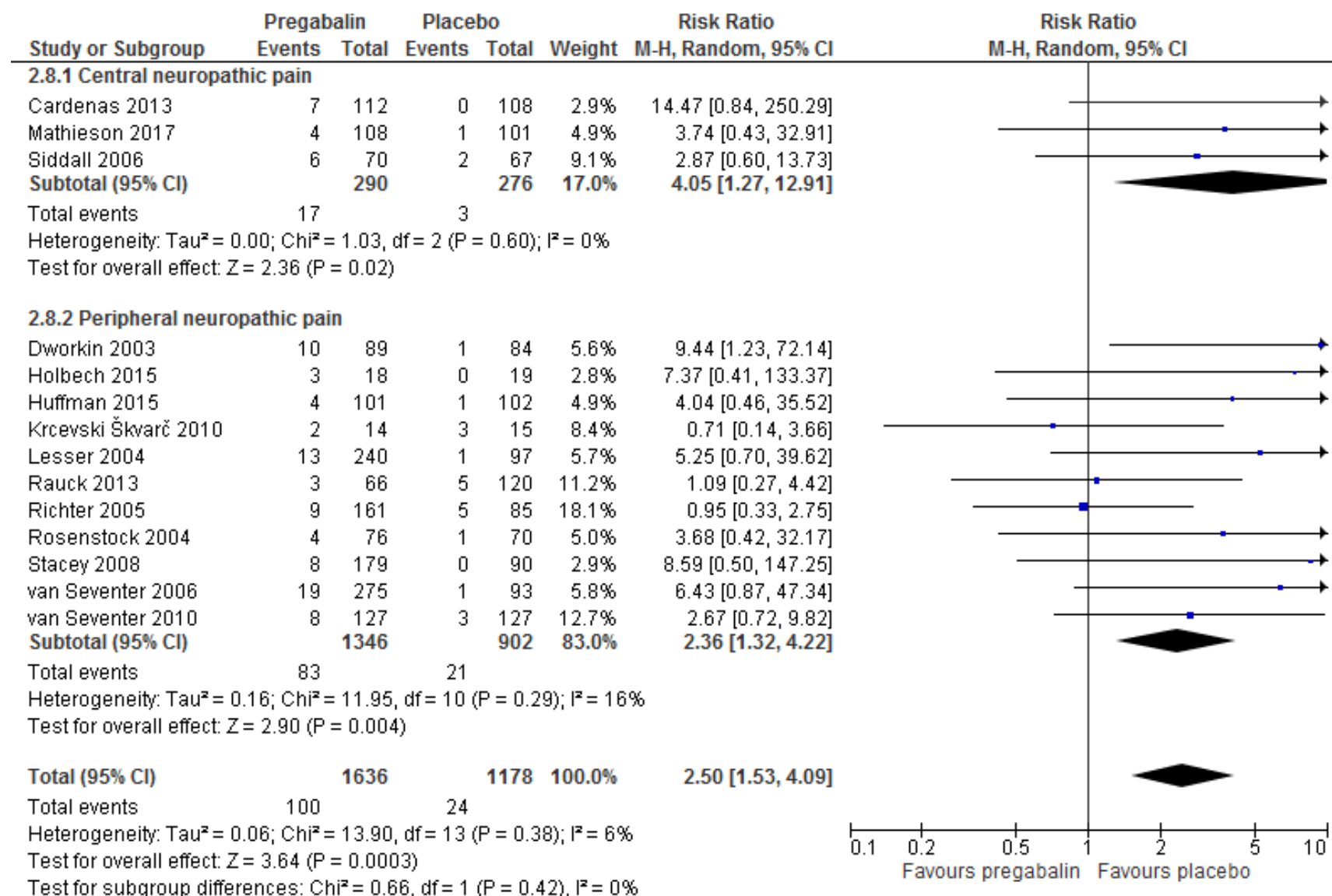


Figure S7: Effect of pregabalin on the risk of visual disturbances* in patients with neuropathic pain



*includes blurring of vision and amblyopia

Figure S8: Effect of pregabalin on the risk of ataxia in patients with neuropathic pain

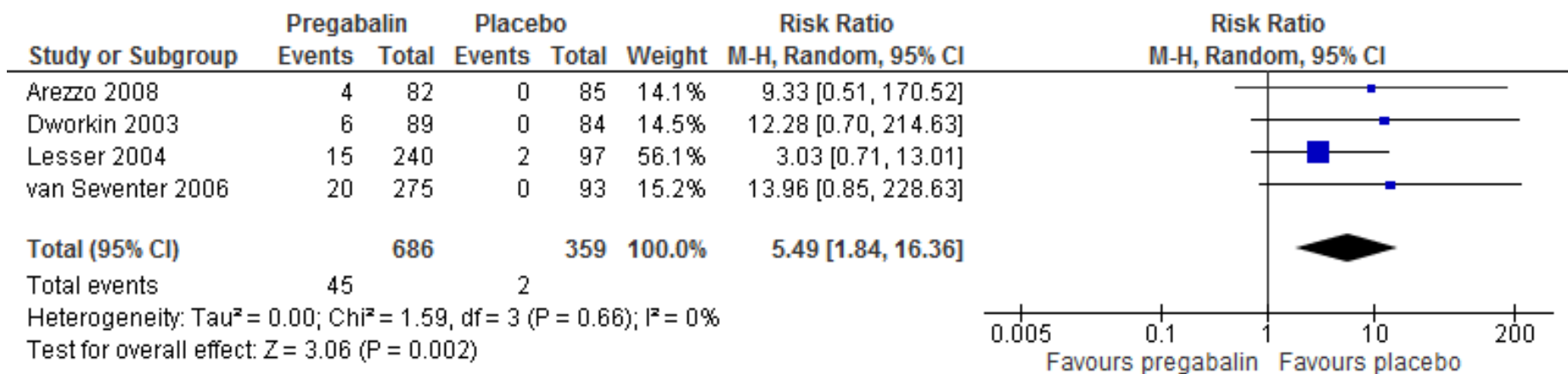


Figure S9: Effect of pregabalin on the risk of non-peripheral edema in patients with neuropathic pain

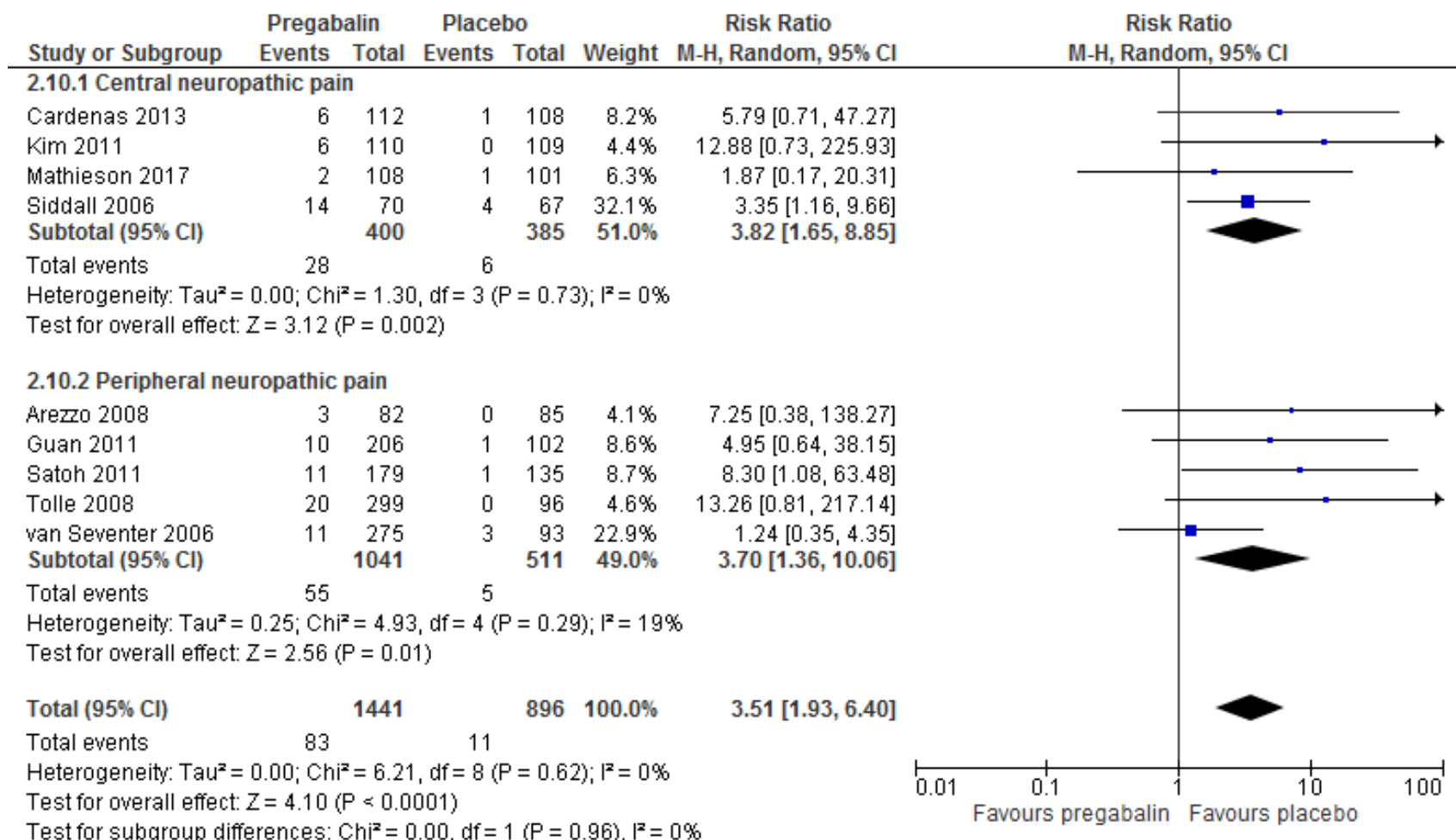


Figure S10: Effect of pregabalin on the risk of vertigo in patients with neuropathic pain

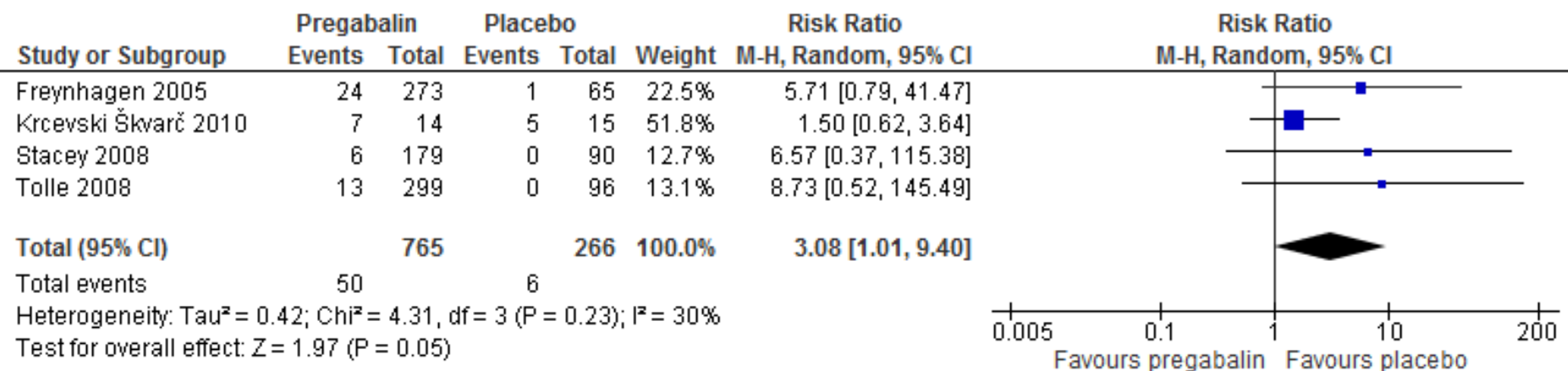


Figure S11: Effect of pregabalin on the risk of euphoria in patients with neuropathic pain

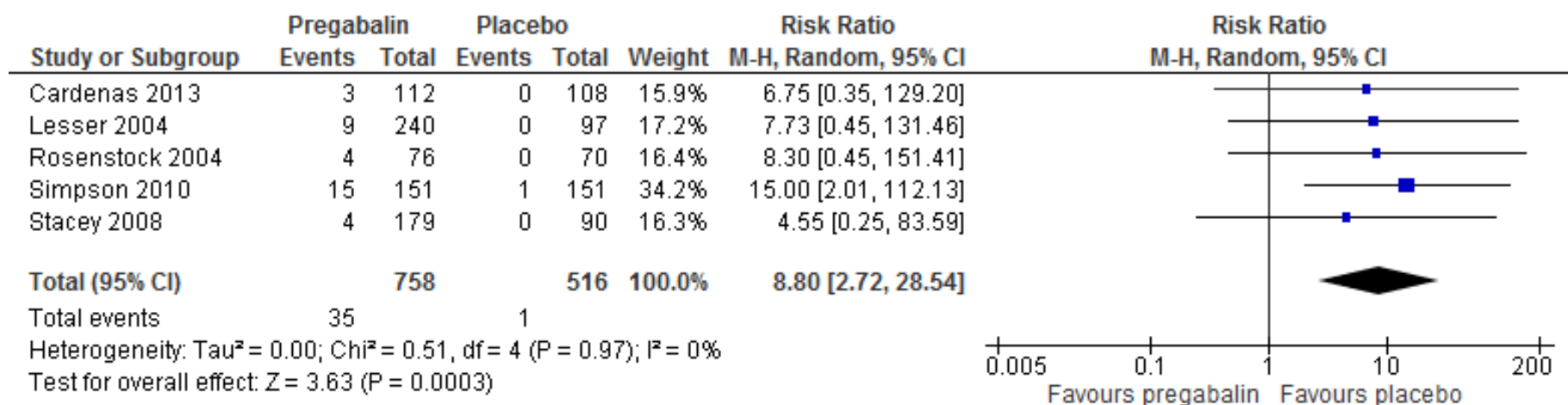


Figure S12: Effect of pregabalin on the risk of dry mouth in patients with neuropathic pain

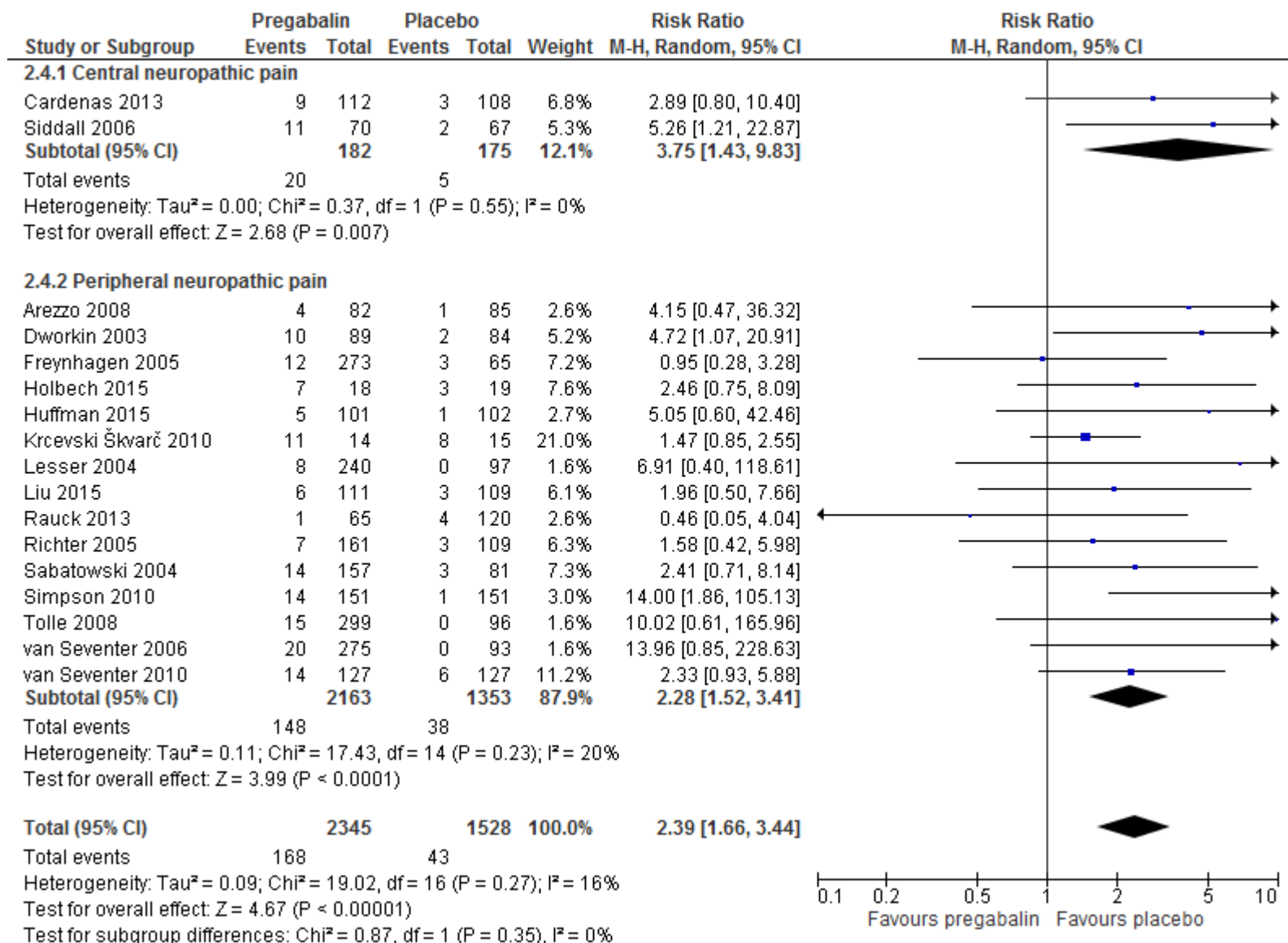


Figure S13: Effect of pregabalin on the risk of discontinuation due to adverse events

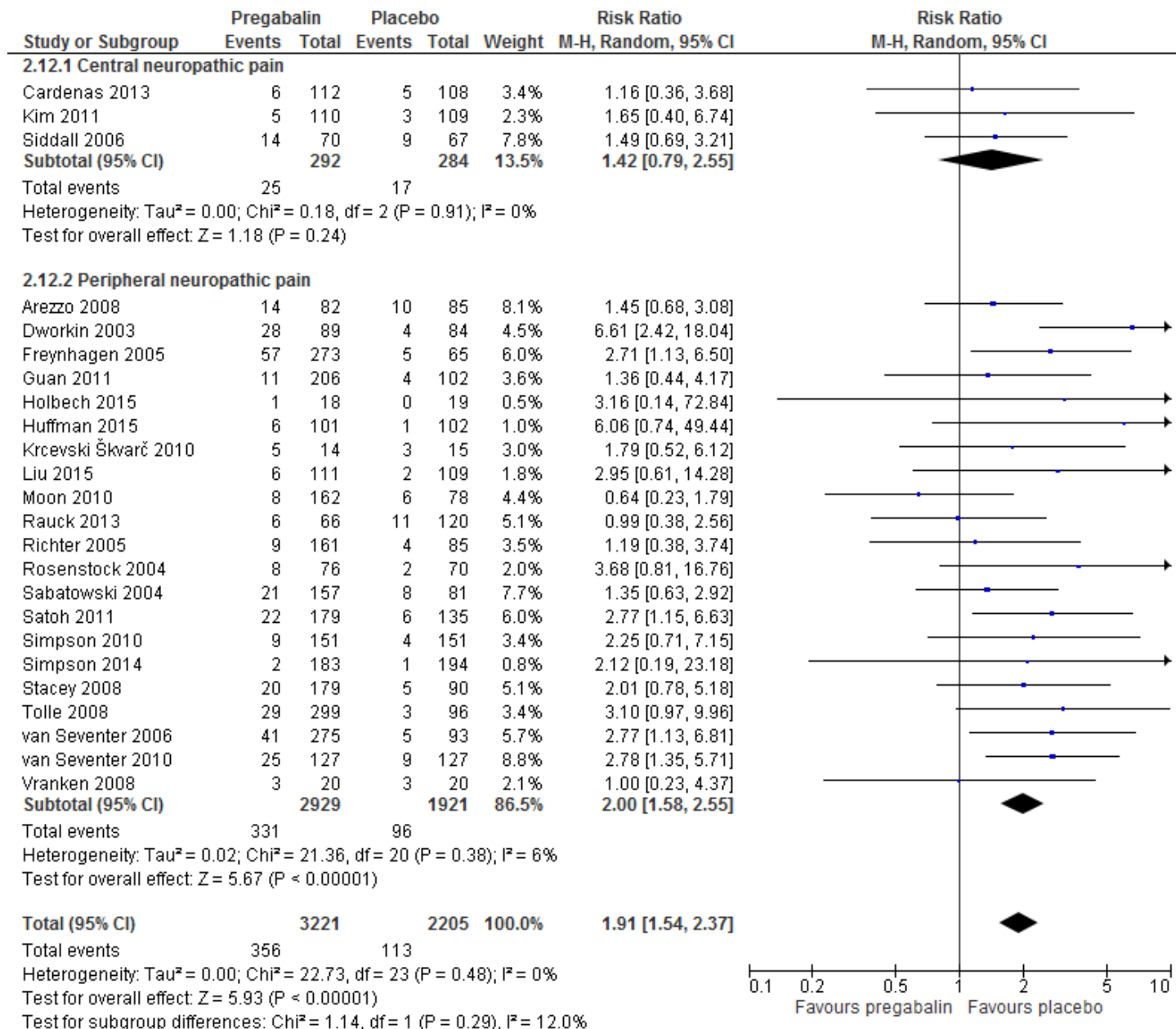


Figure S14: Effect of pregabalin on the risk of serious adverse events in patients with neuropathic pain

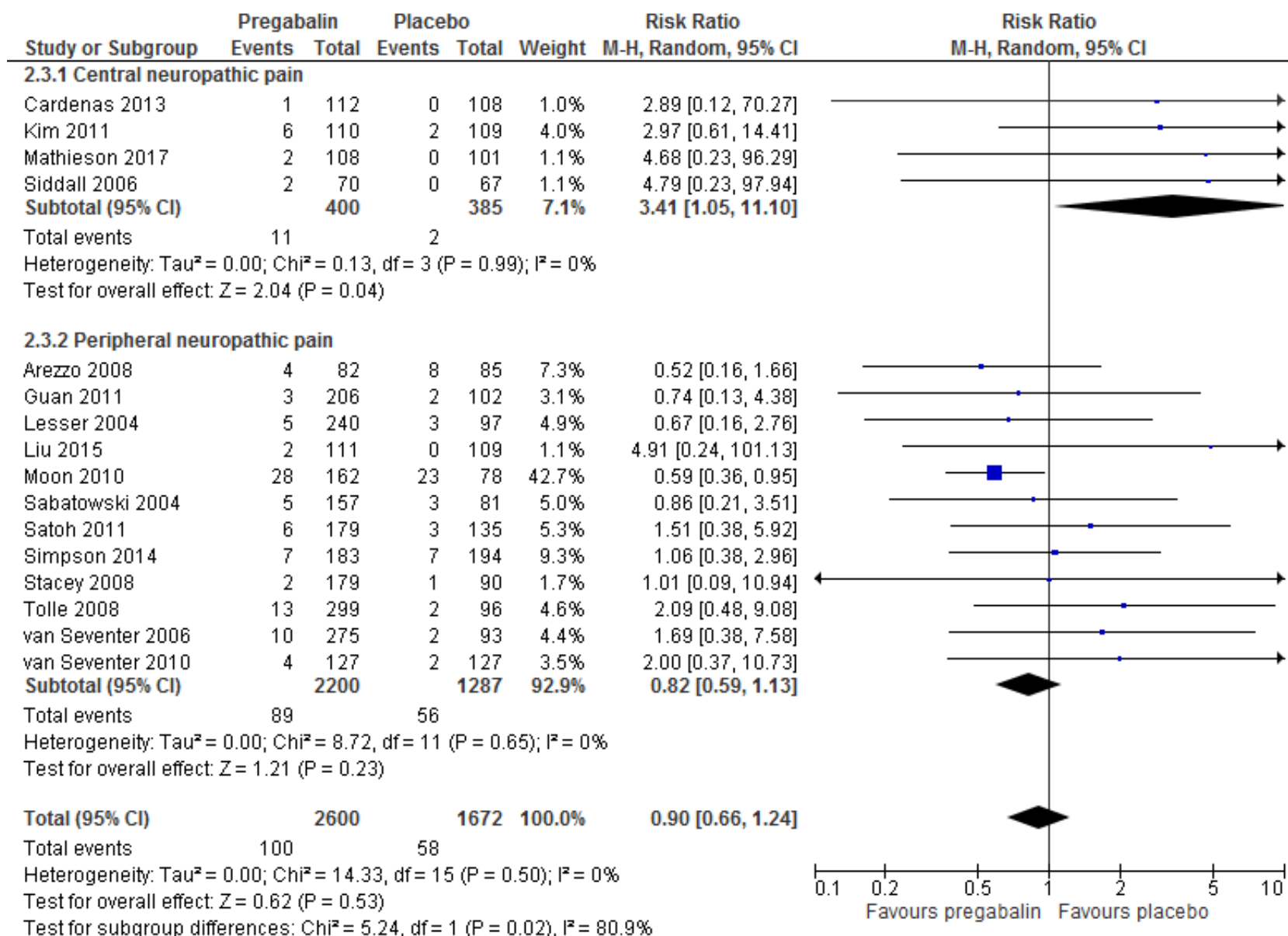


Figure S15: Effect of pregabalin on the sleep disturbance in patients with neuropathic pain

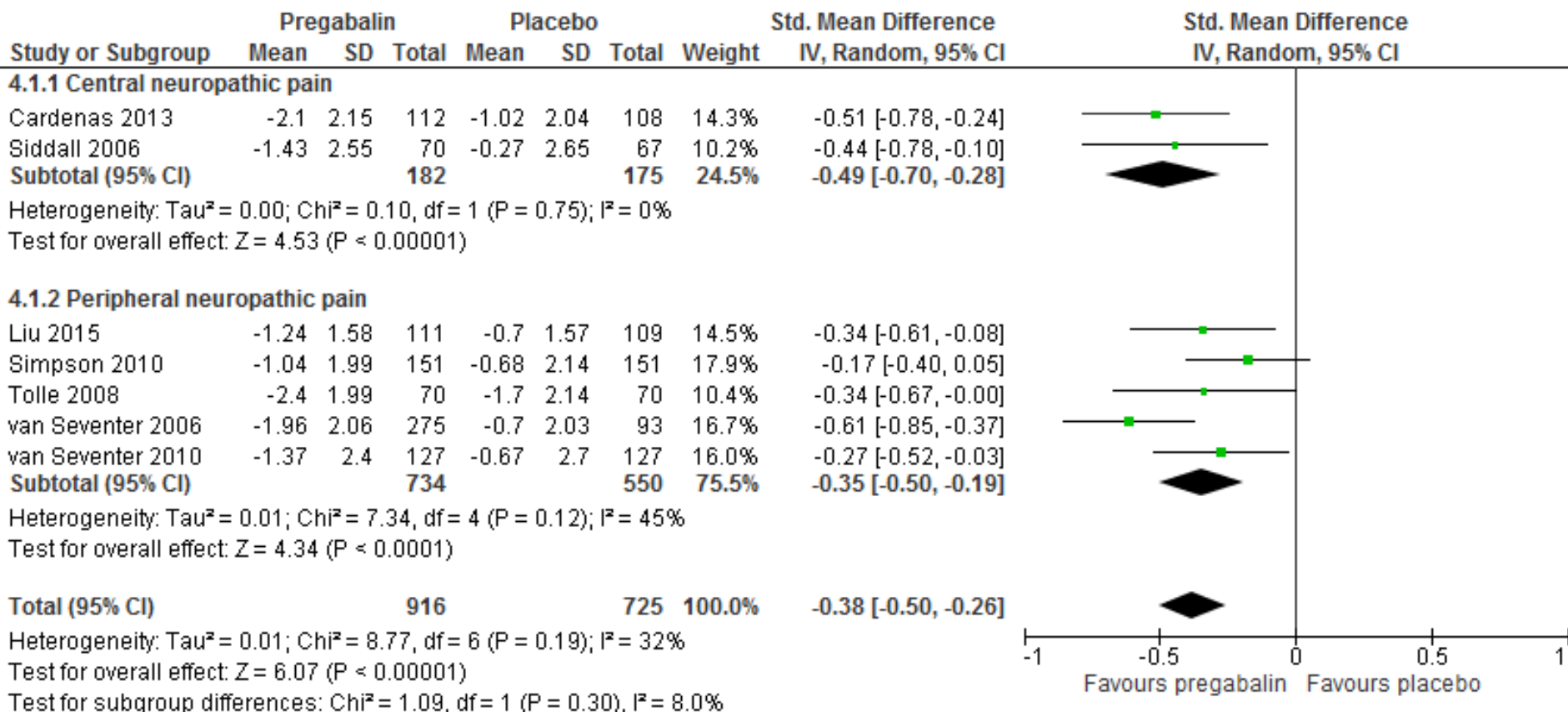


Figure S16: Effect of pregabalin on HADS-anxiety scores in patients with neuropathic pain

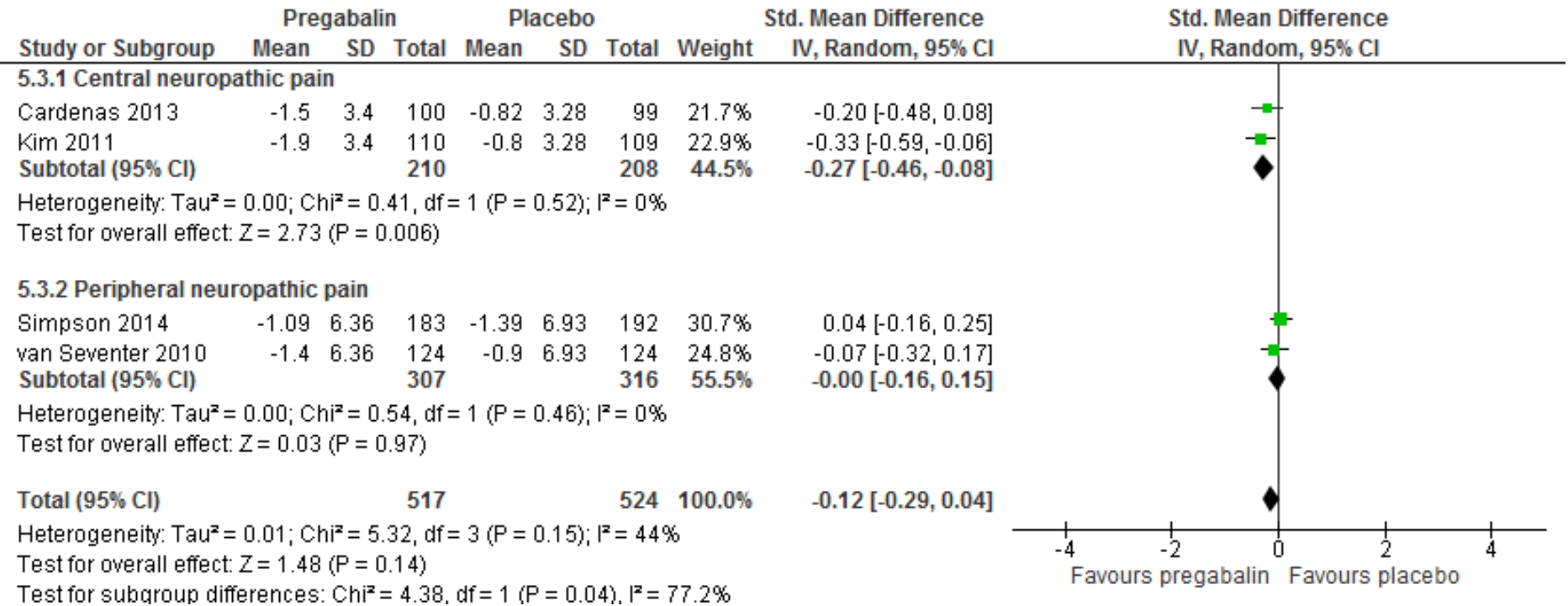


Figure S17: Effect of pregabalin on HADS-depression scores in patients with neuropathic pain

