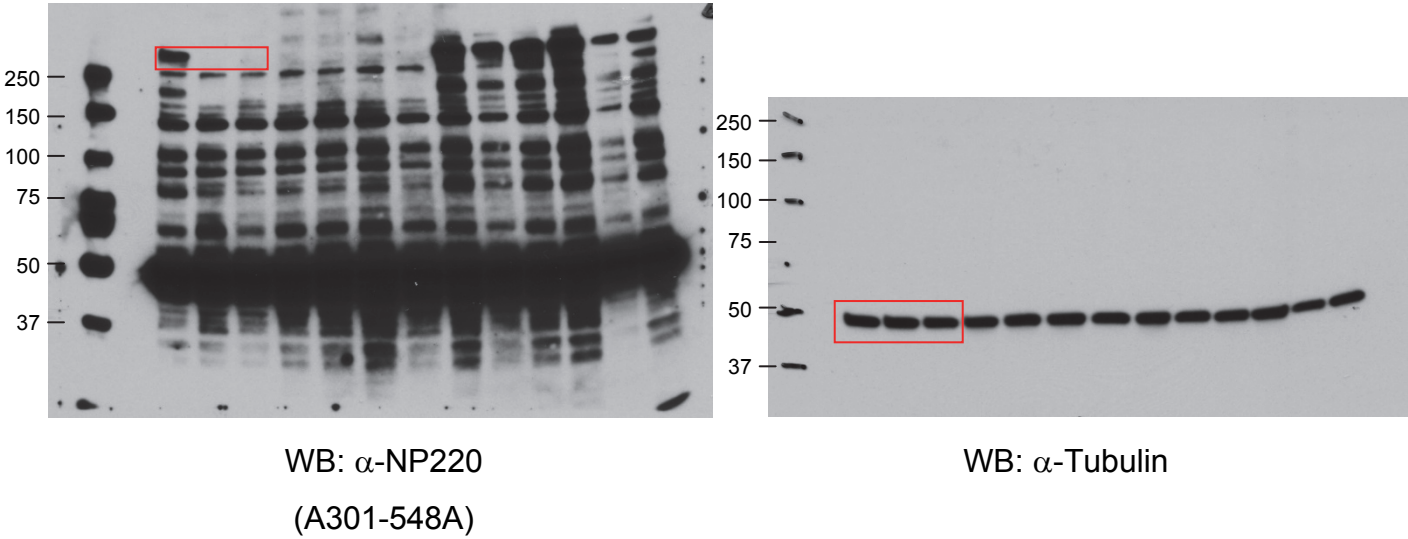
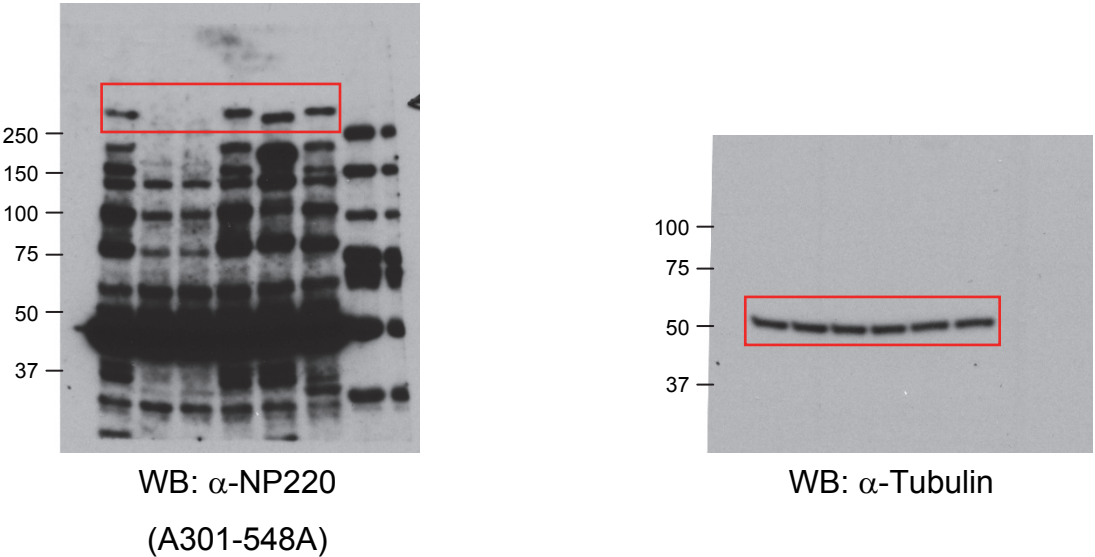


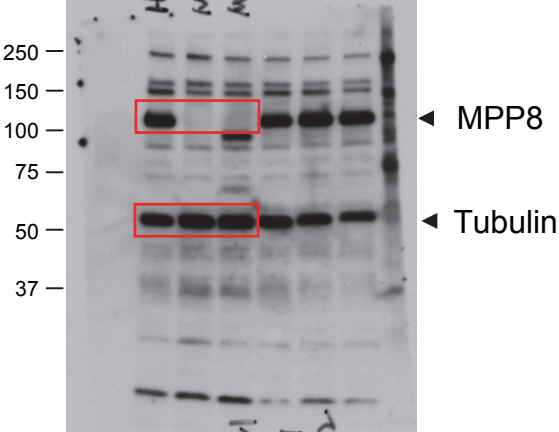
**Fig. 2b**



**Fig. 2c**

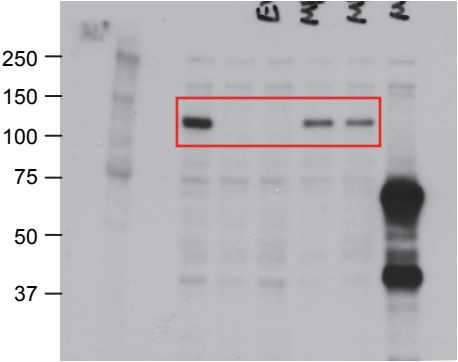


**Fig. 2d**

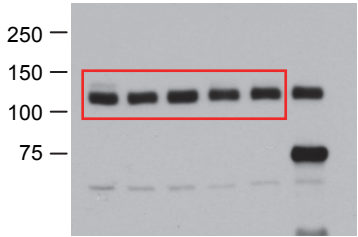


WB:  $\alpha$ -MPP8  
 $\alpha$ -Tubulin

**Fig. 2e**

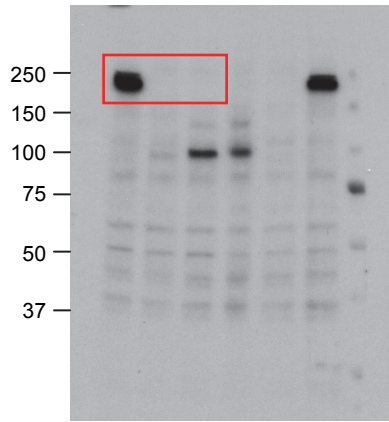


WB:  $\alpha$ -MPP8

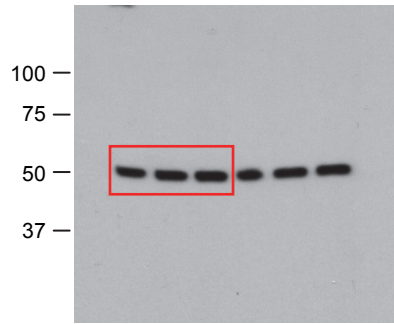


WB:  $\alpha$ -LARS

**Fig. 2f**

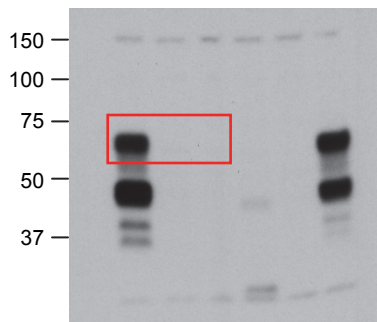


WB:  $\alpha$ -TASOR

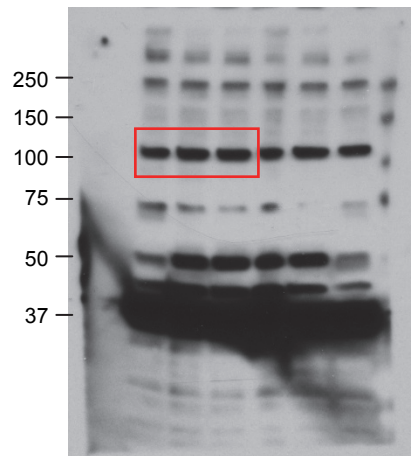


WB:  $\alpha$ -Tubulin

**Fig. 2g**

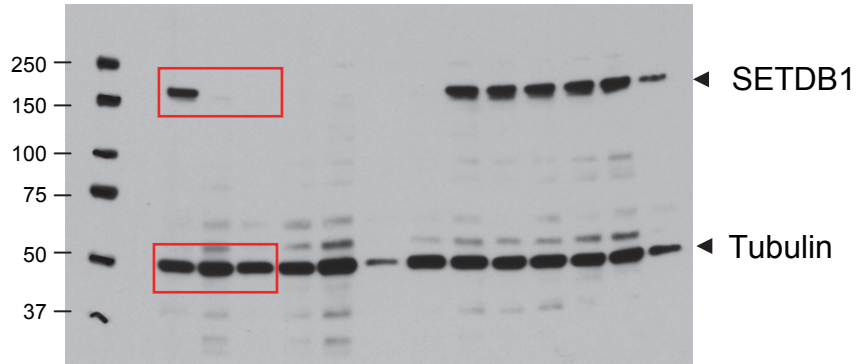


WB:  $\alpha$ -PPhLN1



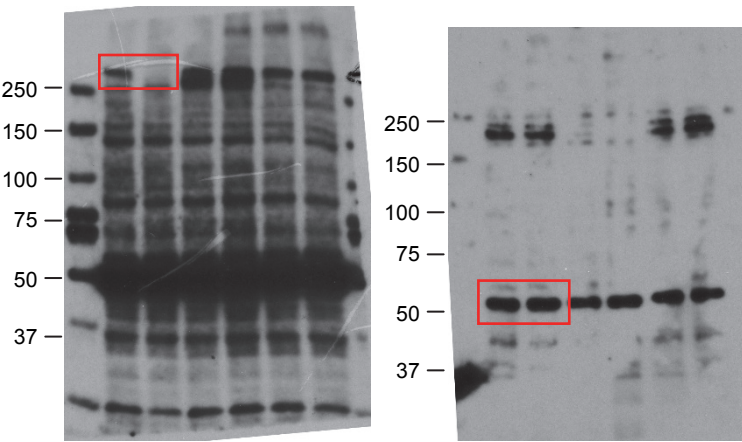
WB:  $\alpha$ -LARS

**Fig. 2h**



WB:  $\alpha$ -SETDB1  
 $\alpha$ -Tubulin

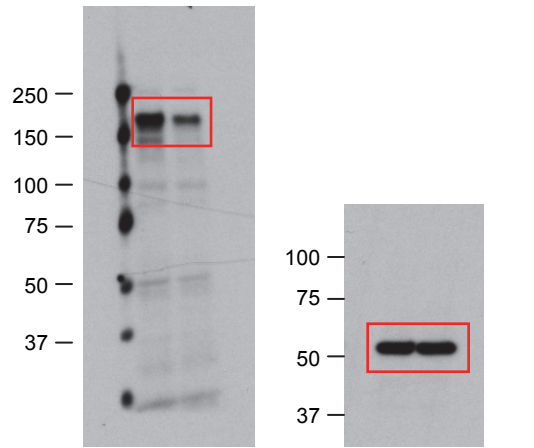
**Extended Data Fig. 2a**



WB:  $\alpha$ -NP220  
(A301-548A)

WB:  $\alpha$ -Tubulin

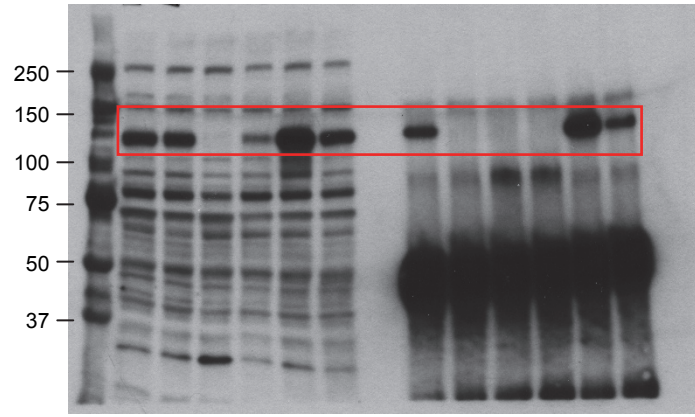
**Extended Data Fig. 2b**



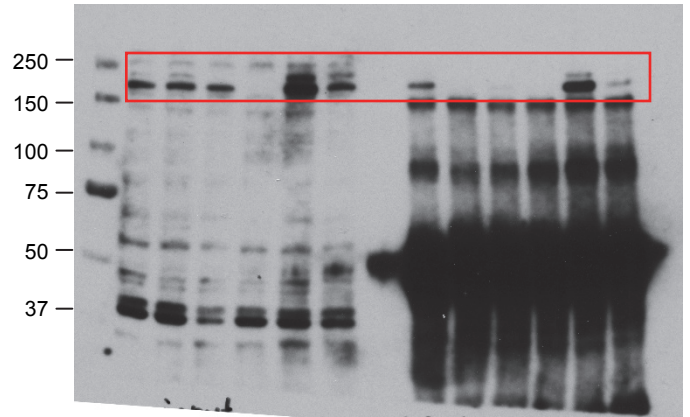
WB:  $\alpha$ -NP220  
(A301-547A)

WB:  $\alpha$ -Tubulin

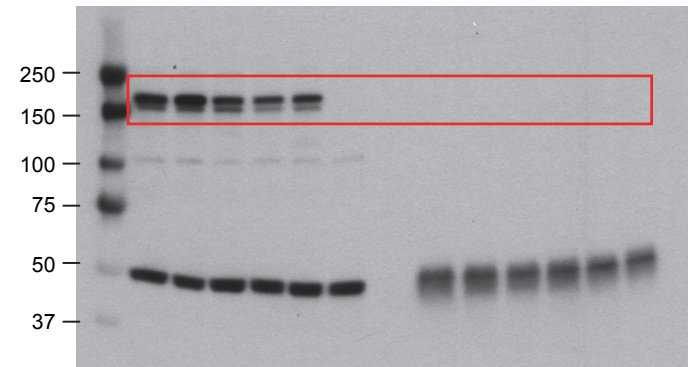
**Fig. 3a**



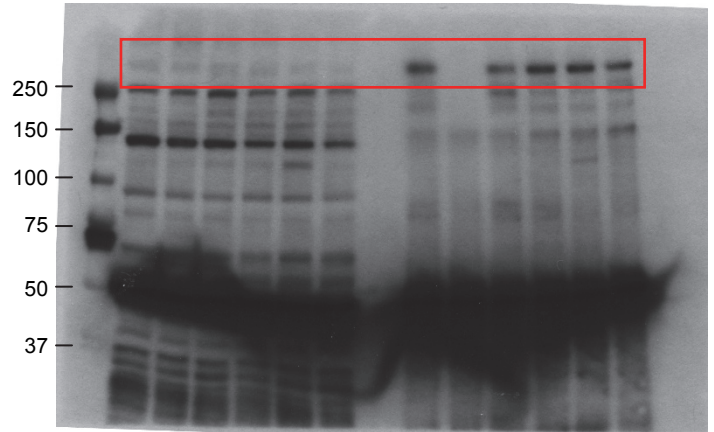
WB:  $\alpha$ -MPP8



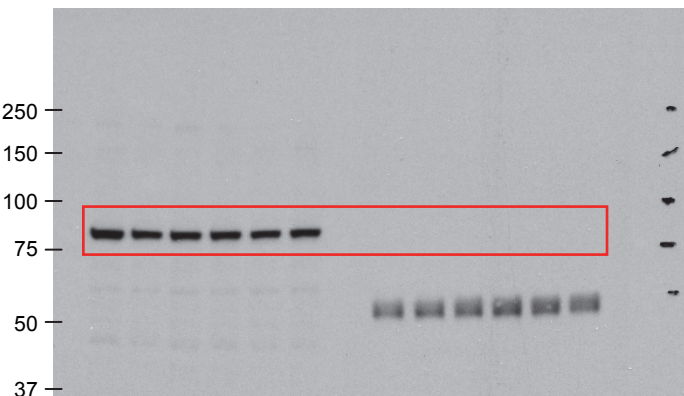
WB:  $\alpha$ -TASOR



WB:  $\alpha$ -SETDB1



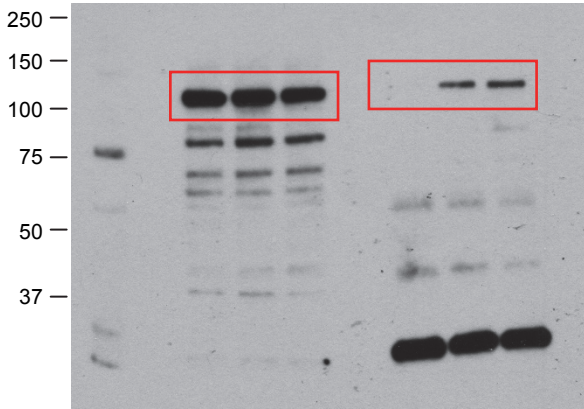
WB:  $\alpha$ -NP220  
(A301-547A)



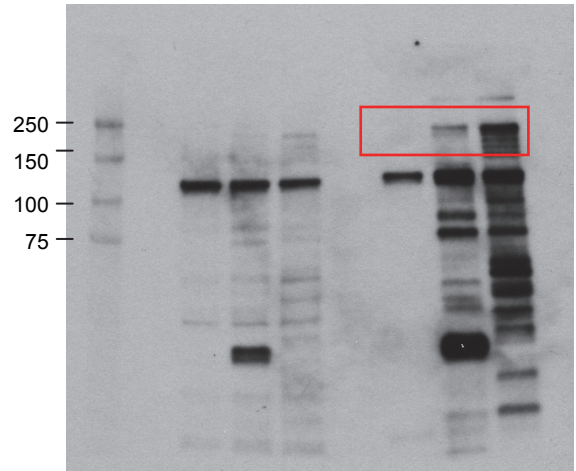
WB:  $\alpha$ -QARS



### Extended Data Fig. 3a

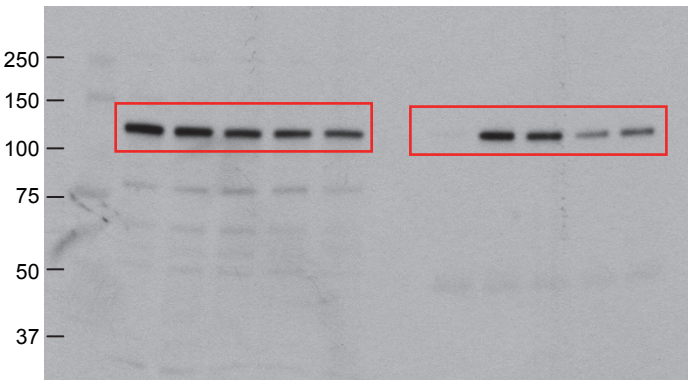


WB:  $\alpha$ -MPP8

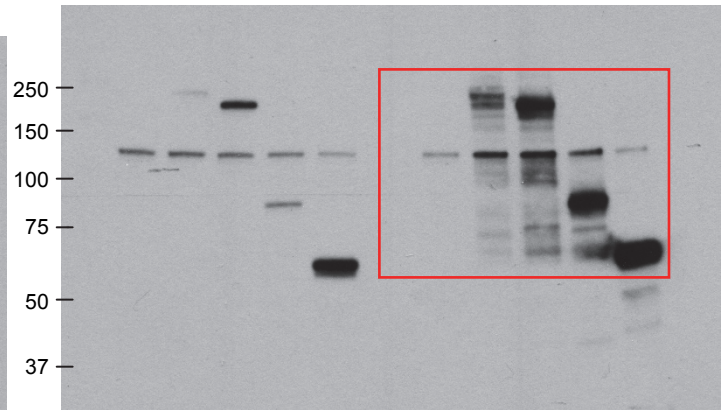


WB:  $\alpha$ -HA

### Extended Data Fig. 3b

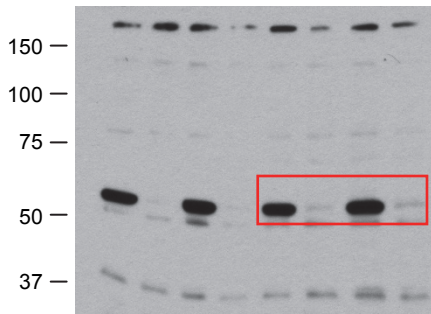


WB:  $\alpha$ -MPP8

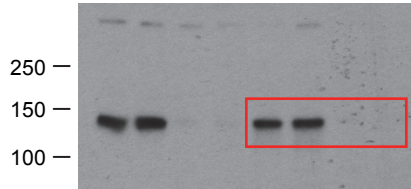


WB:  $\alpha$ -HA

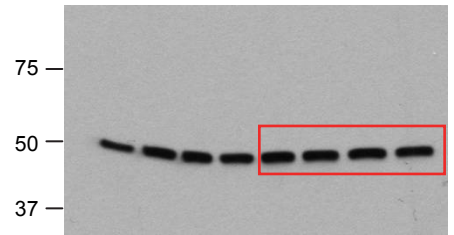
**Fig. 4b**



WB:  $\alpha$ -HDAC1

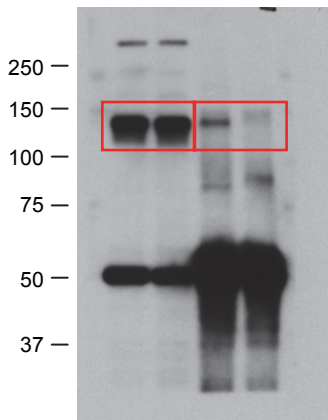


WB:  $\alpha$ -HDAC4

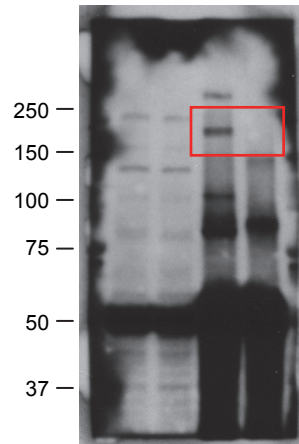


WB:  $\alpha$ -Tubulin

**Fig. 4d**

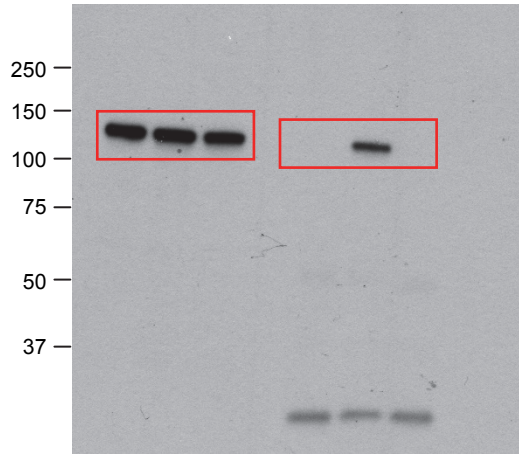


WB:  $\alpha$ -HDAC4

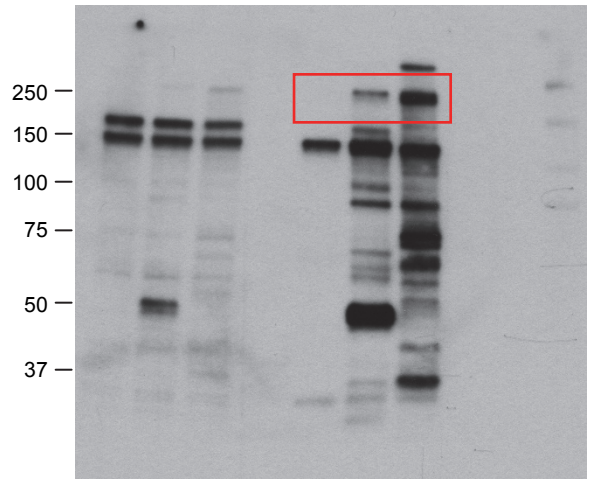


WB:  $\alpha$ -NP220  
(A301-547A)

**Fig. 4e**



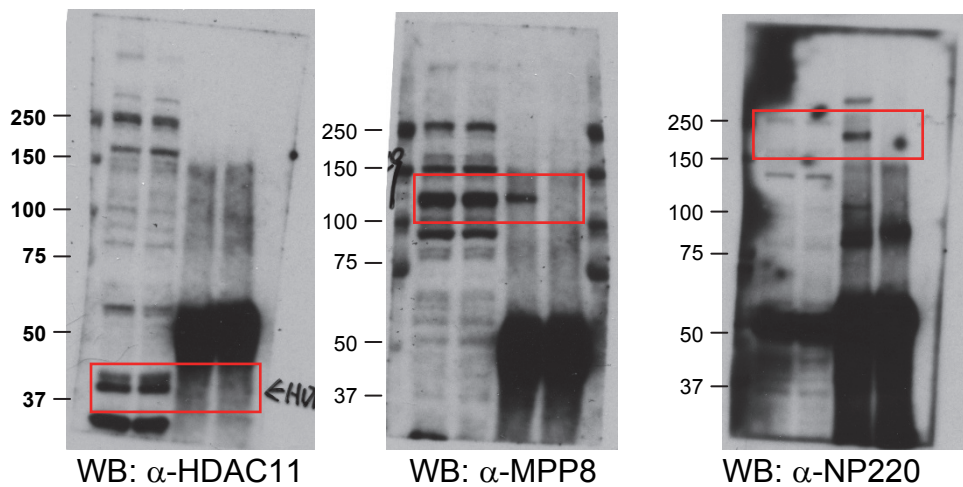
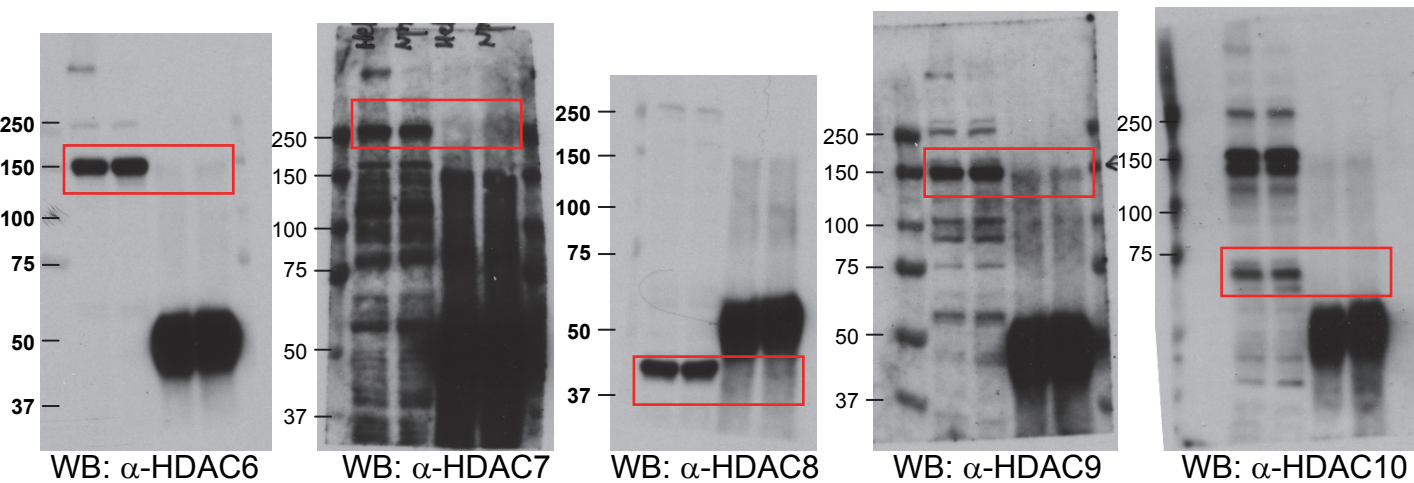
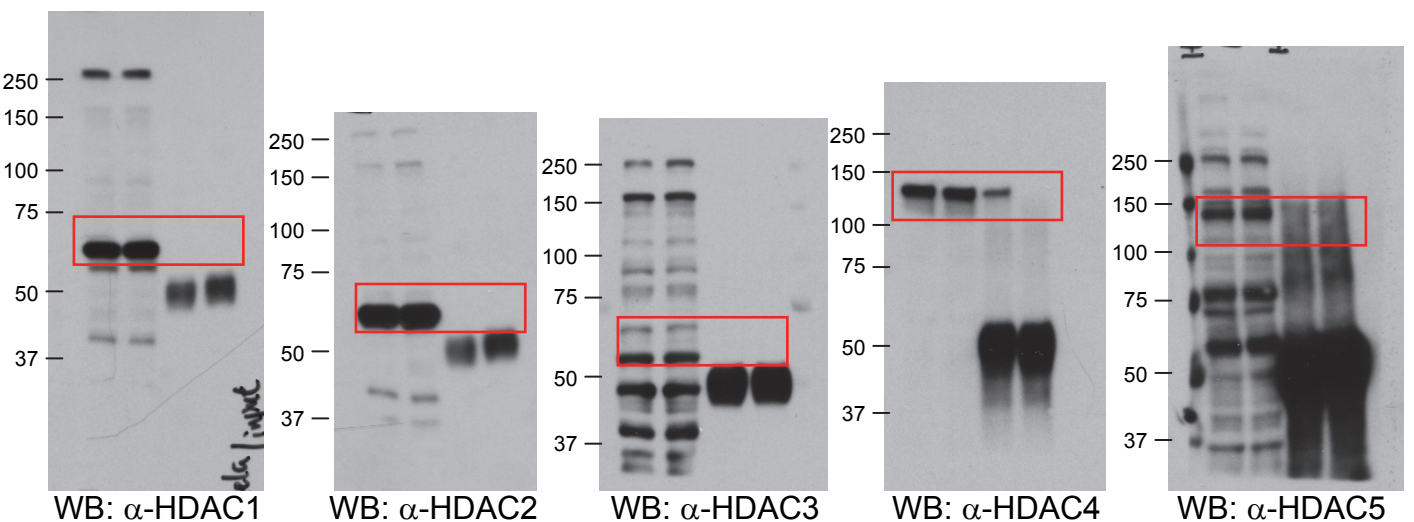
WB:  $\alpha$ -HDAC4



WB:  $\alpha$ -HA

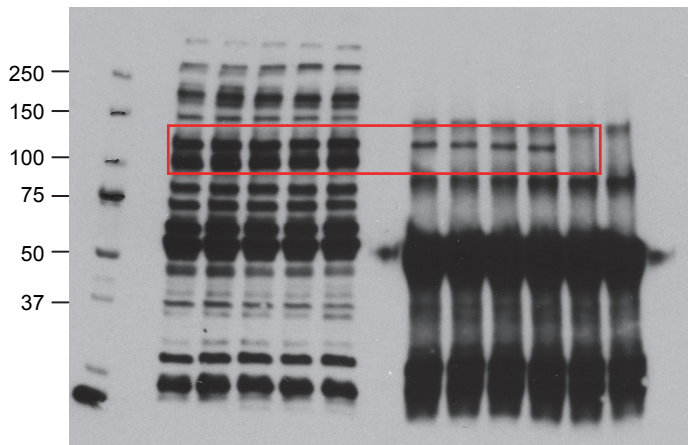


# Extended Data Fig. 4a

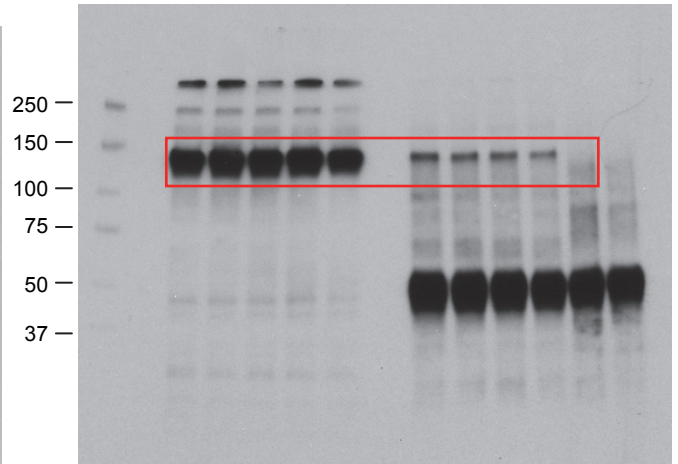


(A301-547A)

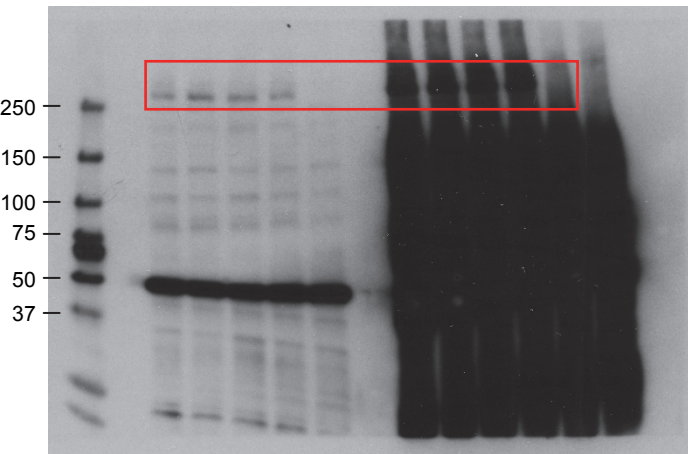
# Extended Data Fig. 4b



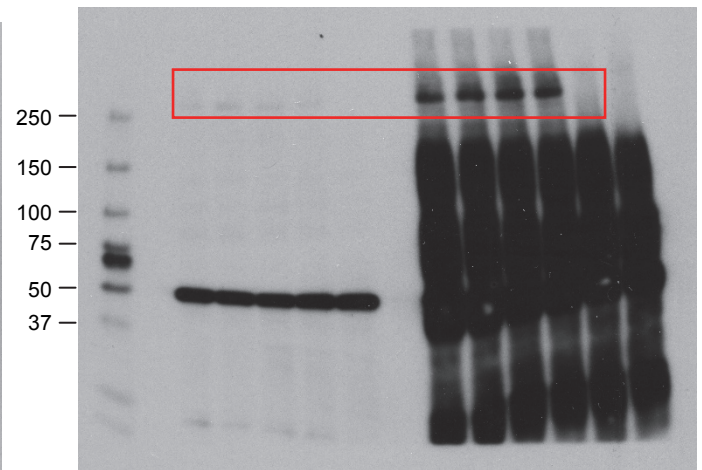
WB:  $\alpha$ -MPP8



WB:  $\alpha$ -HDAC4

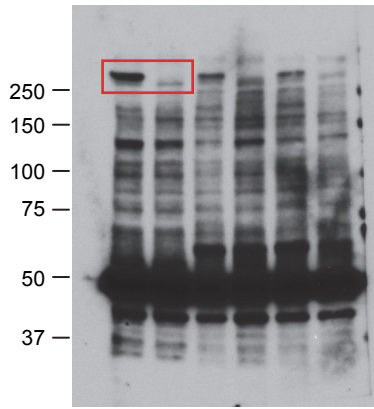


WB:  $\alpha$ -NP220  
(A301-548A)

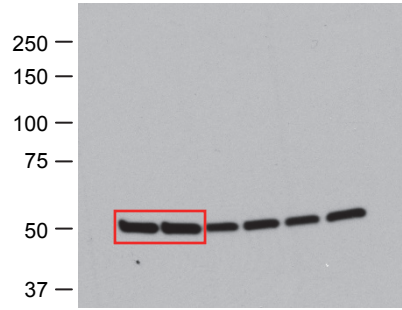


WB:  $\alpha$ -NP220  
(A301-548A)  
(short time exposure)

## Extended Data Fig. 5a

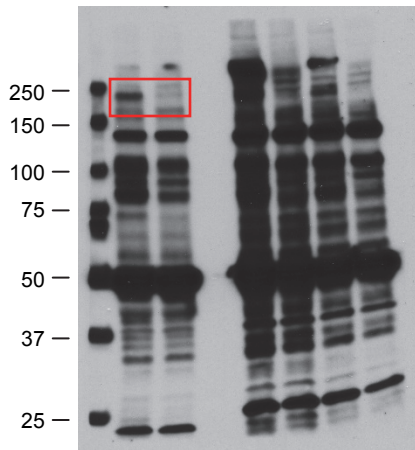


WB:  $\alpha$ -NP220  
(A301-548A)

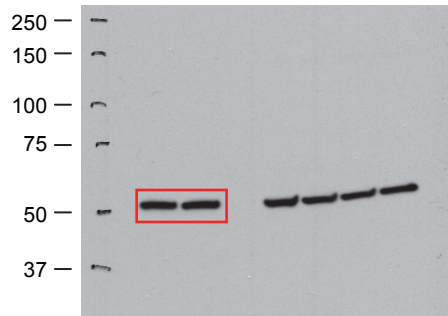


WB:  $\alpha$ -Tubulin

## Extended Data Fig. 5b

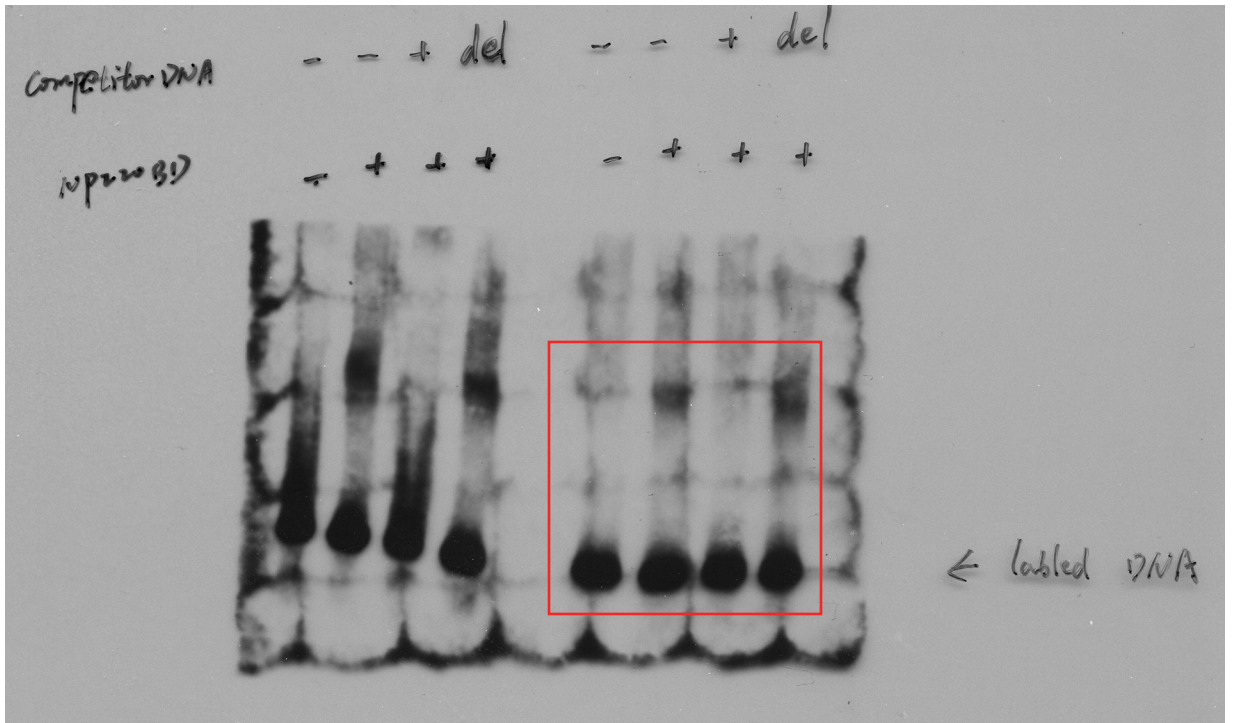


WB:  $\alpha$ -NP220  
(A301-548A)



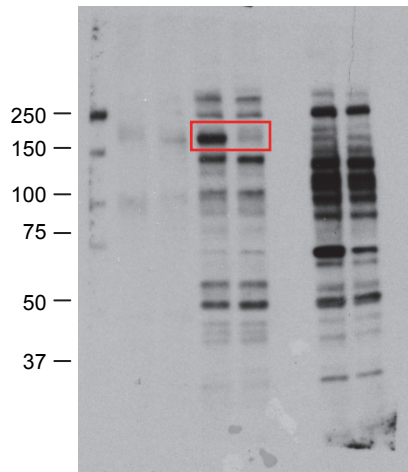
WB:  $\alpha$ -Tubulin

Fig. 5b

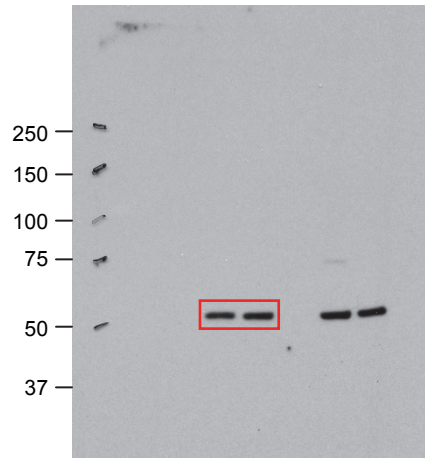




**Fig. 5g**



WB:  $\alpha$ -NP220  
(A301-547A)



WB:  $\alpha$ -Tubulin