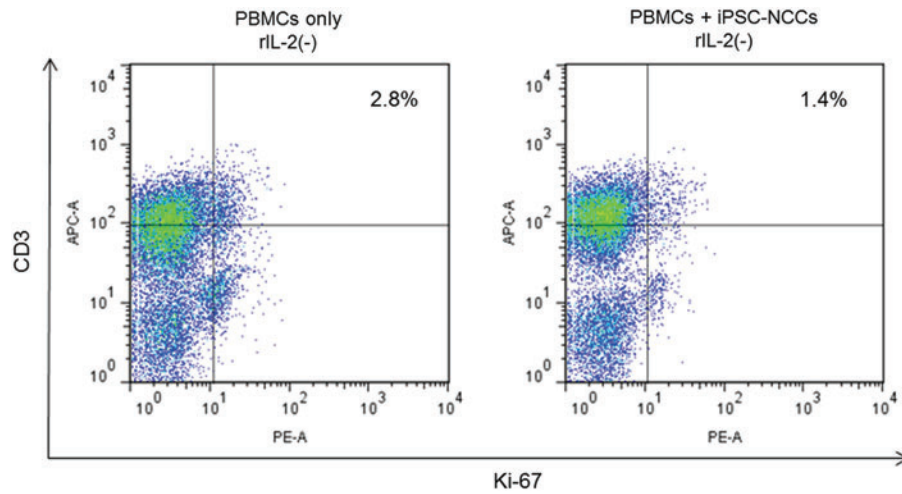


Supplementary Data



SUPPLEMENTARY FIG. S1. Low immunogenicity of iPSC-NCCs in the absence of rIL-2. PBMCs were incubated in RPMI1640 supplemented with anti-human CD3 and anti-human CD28 antibodies. rIL-2 was not added in the medium. After 72 h of incubation, PBMCs were collected and analyzed by CD3-Ki-67 FACS analysis. Results showed that the PBMC proliferation with (or w/o) iPSC-NCC was poor if IL-2 conditions were not present. iPSC, induced pluripotent stem cell; NCC, neural crest cell; PBMC, peripheral blood mononuclear cell; rIL-2, recombinant interleukin-2.