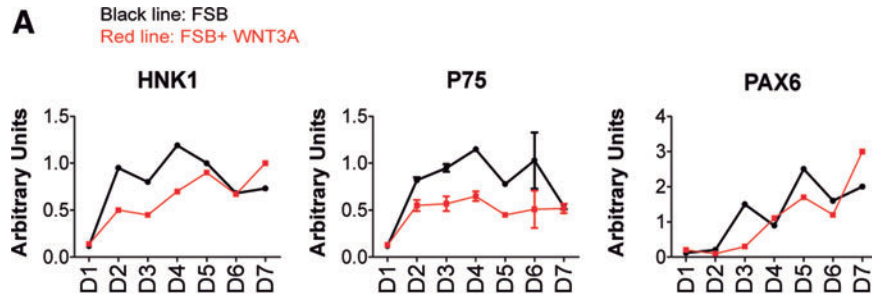
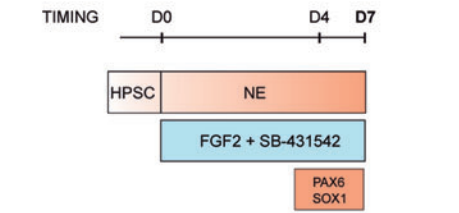


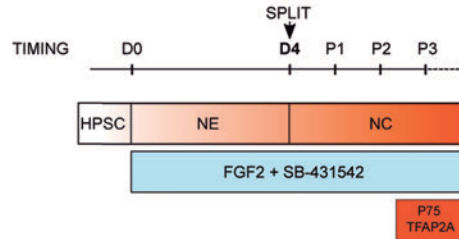
Supplementary Data



B NEUROECTODERM DIFFERENTIATION PROTOCOL



NEURAL CREST DIFFERENTIATION PROTOCOL



SUPPLEMENTARY FIG. S1. Optimization of NC cell differentiation by splitting NE-derived HPSC at day 4 into single cells. **(A)** Expression levels of *P75*, *HNK1*, and *PAX6* by qRT-PCR during 7 days of HESC differentiation to NE. The mRNA levels were normalized to the housekeeping gene *PBGD*. *Black line*: differentiation to NE with CDM supplemented with FGF2 and SB-431542 (FSB). *Red line*: FSB media supplemented with 25 ng/mL WNT3A. **(B)** Schematic of the differentiation protocols used to derive NE and NC cells from HPSC. CDM, chemically defined media; FGF, fibroblast growth factor; HESC, human embryonic stem cell; HPSC, human pluripotent stem cell; mRNA, messenger RNA; NC, neural crest; NE, neuroectoderm; *PBGD*, porphobilinogen deaminase; qRT-PCR, quantitative real-time polymerase chain reaction.