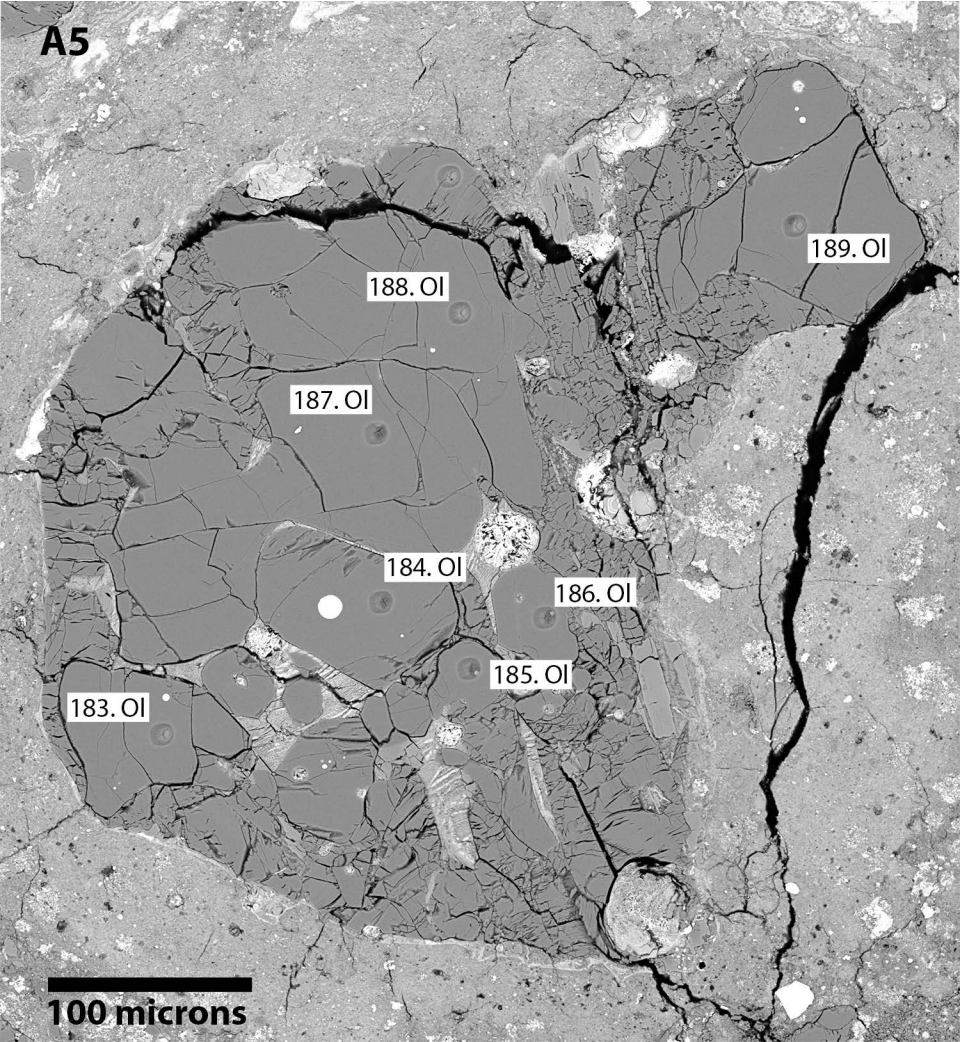


Appendix EA2. Backscattered electron images of studied Murchison chondrules.

Numbers associated with SIMS pits correspond to individual O-isotope data given in Appendix EA4.

Homogeneous chondrules – 15 microns diameter spots

A5



188.OI

189.OI

187.OI

184.OI

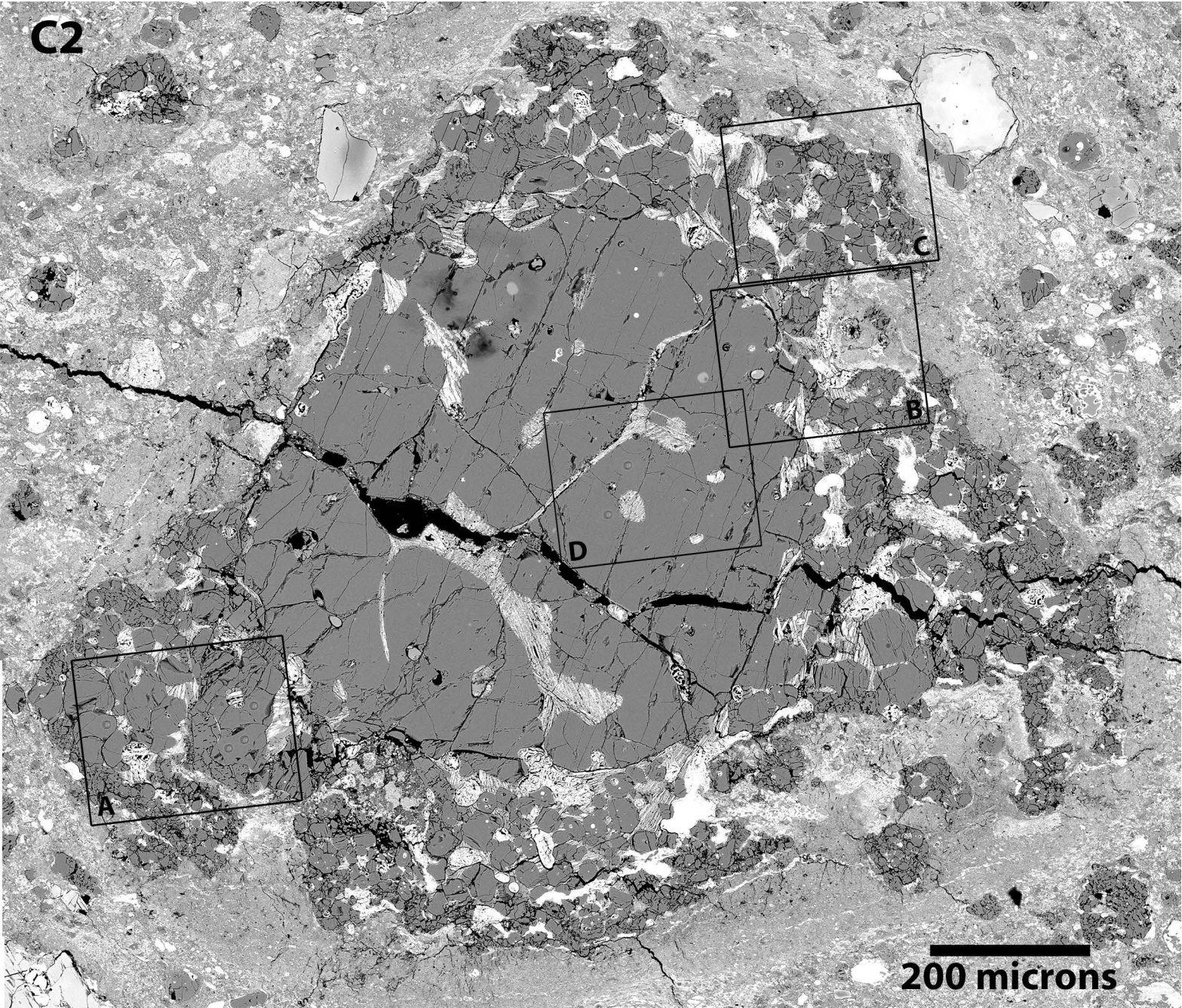
186.OI

185.OI

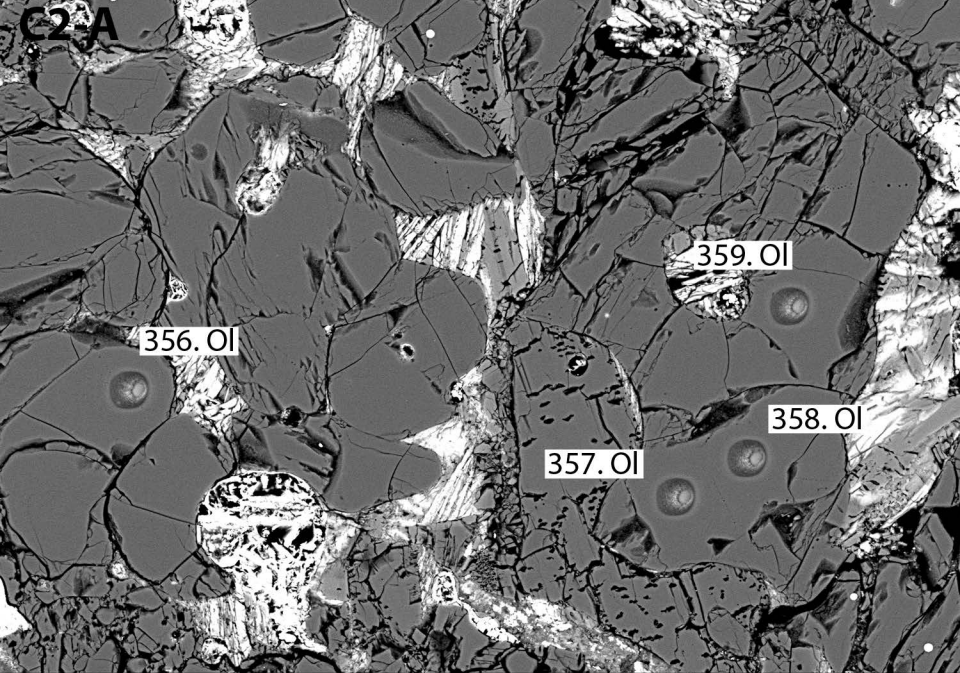
183.OI

100 microns

C2



200 microns



356.OI

359.OI

358.OI

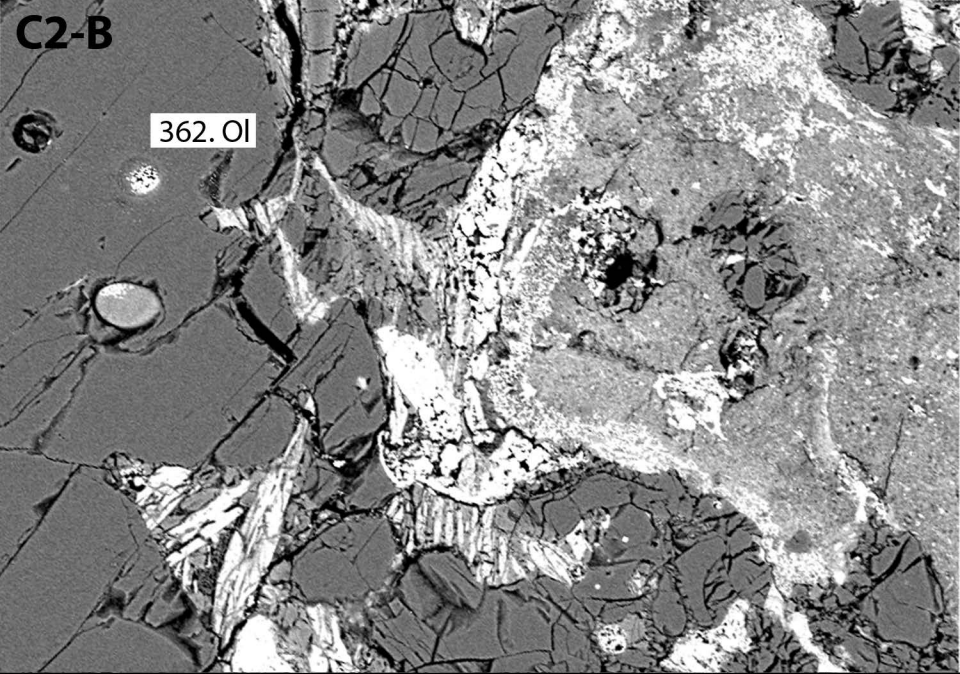
357.OI

15.0kV x470 BSECOMP

100um

C2-B

362.01



15.0kV x500 BSECOMP

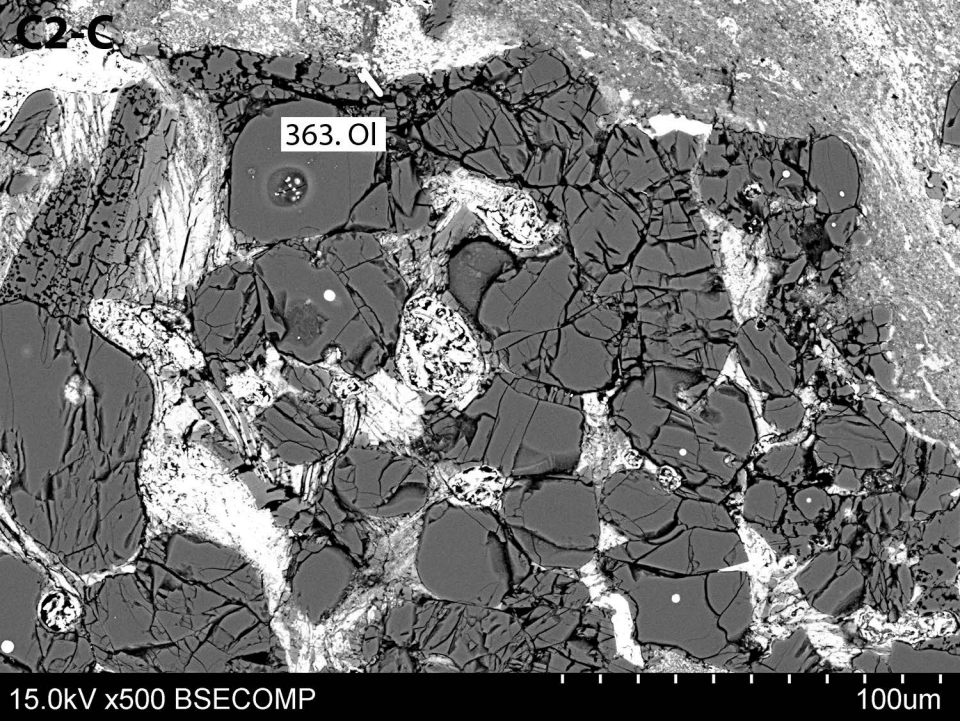
100um

C2-C

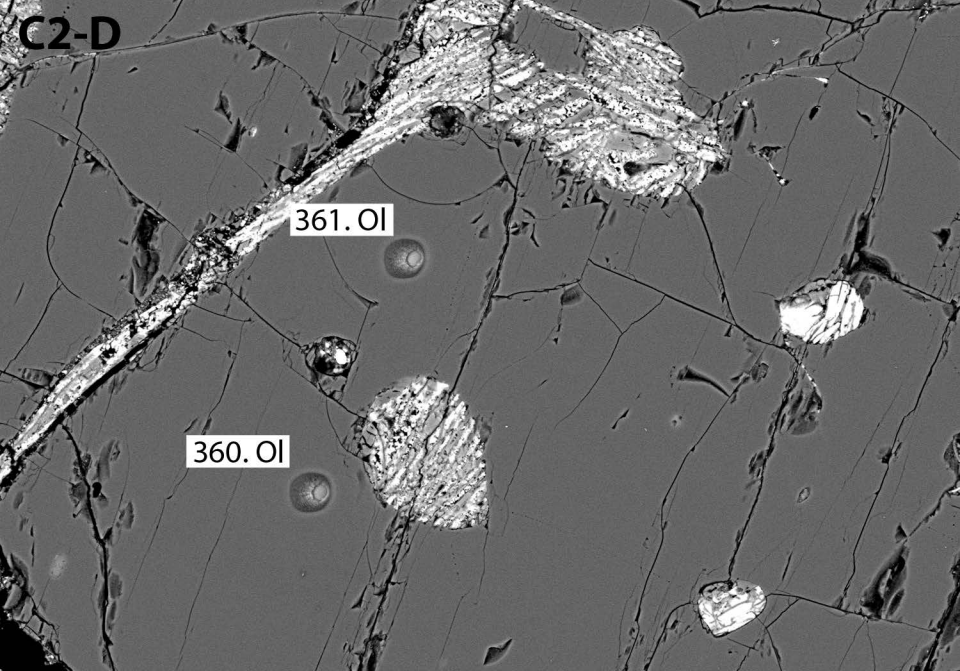
363.01

15.0kV x500 BSECOMP

100um



C2-D



361. OI

360. OI

15.0kV x500 BSECOMP

100um

A2

100. OI

106. LPx

101. LPx

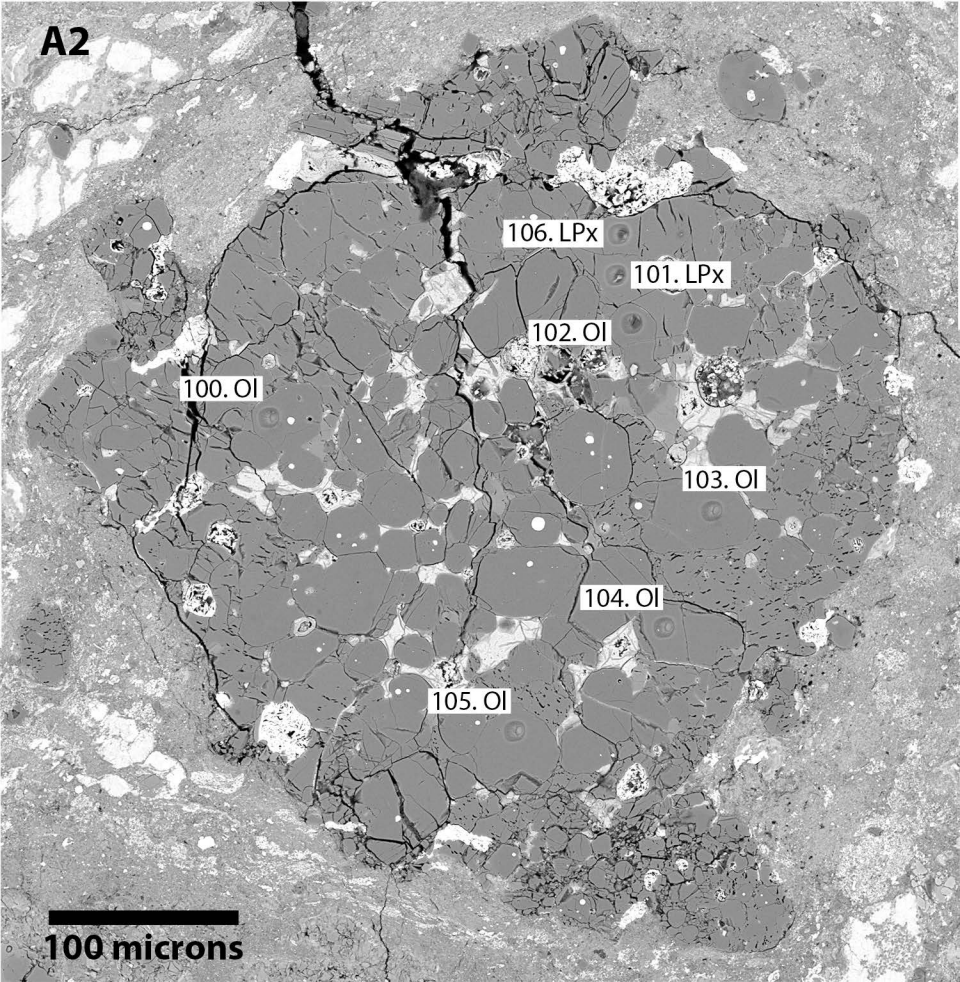
102. OI

103. OI

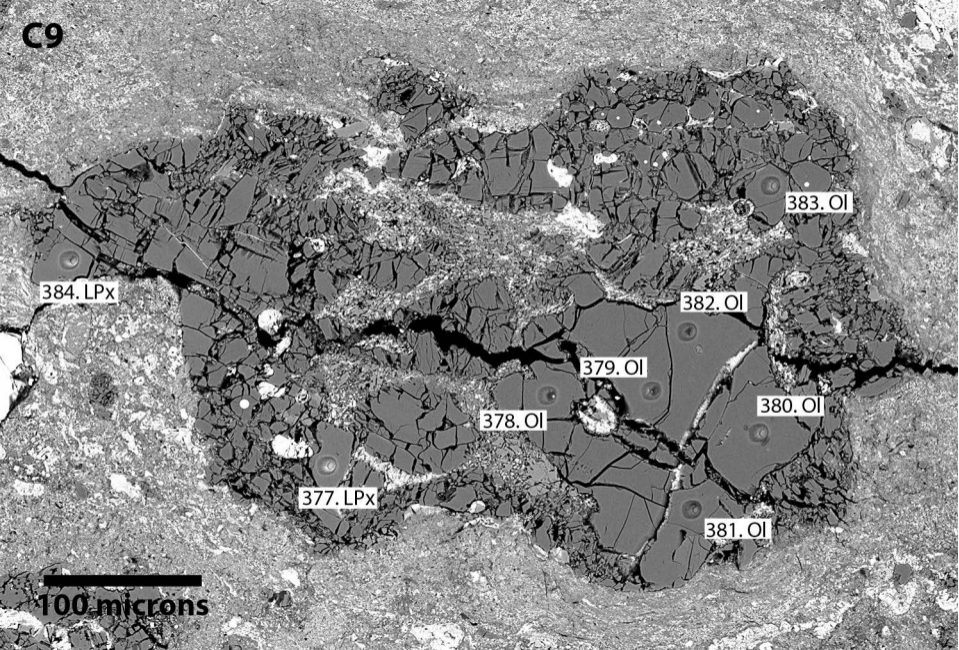
104. OI

105. OI

100 microns



C9



384.LPx

383.OI

382.OI

379.OI

380.OI

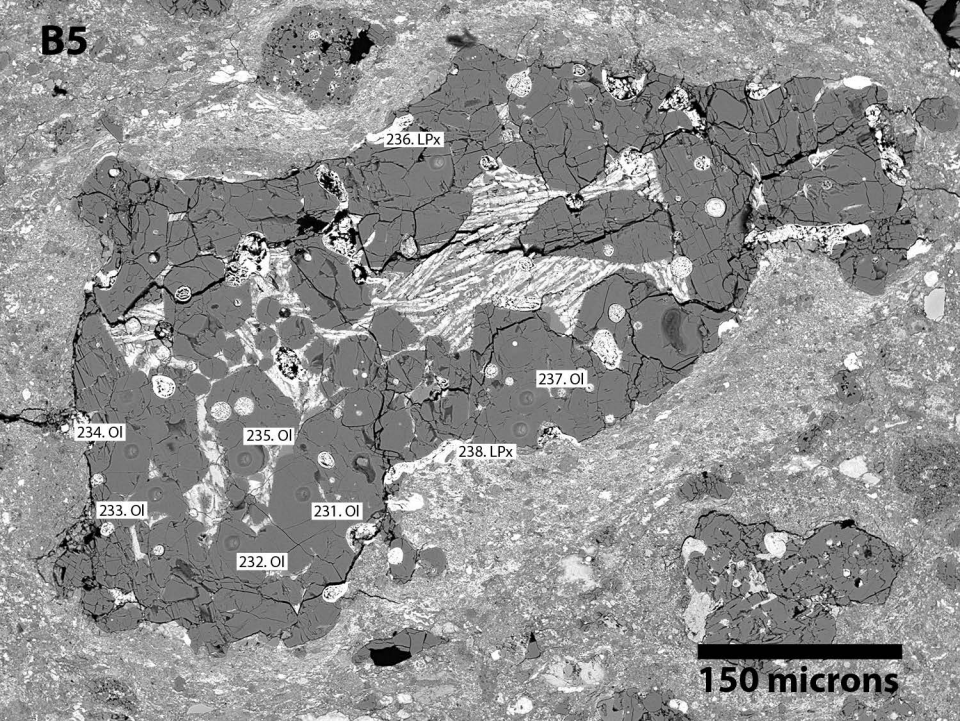
378.OI

377.LPx

381.OI

100 microns

B5



236.LPx

237.OI

238.LPx

234.OI

235.OI

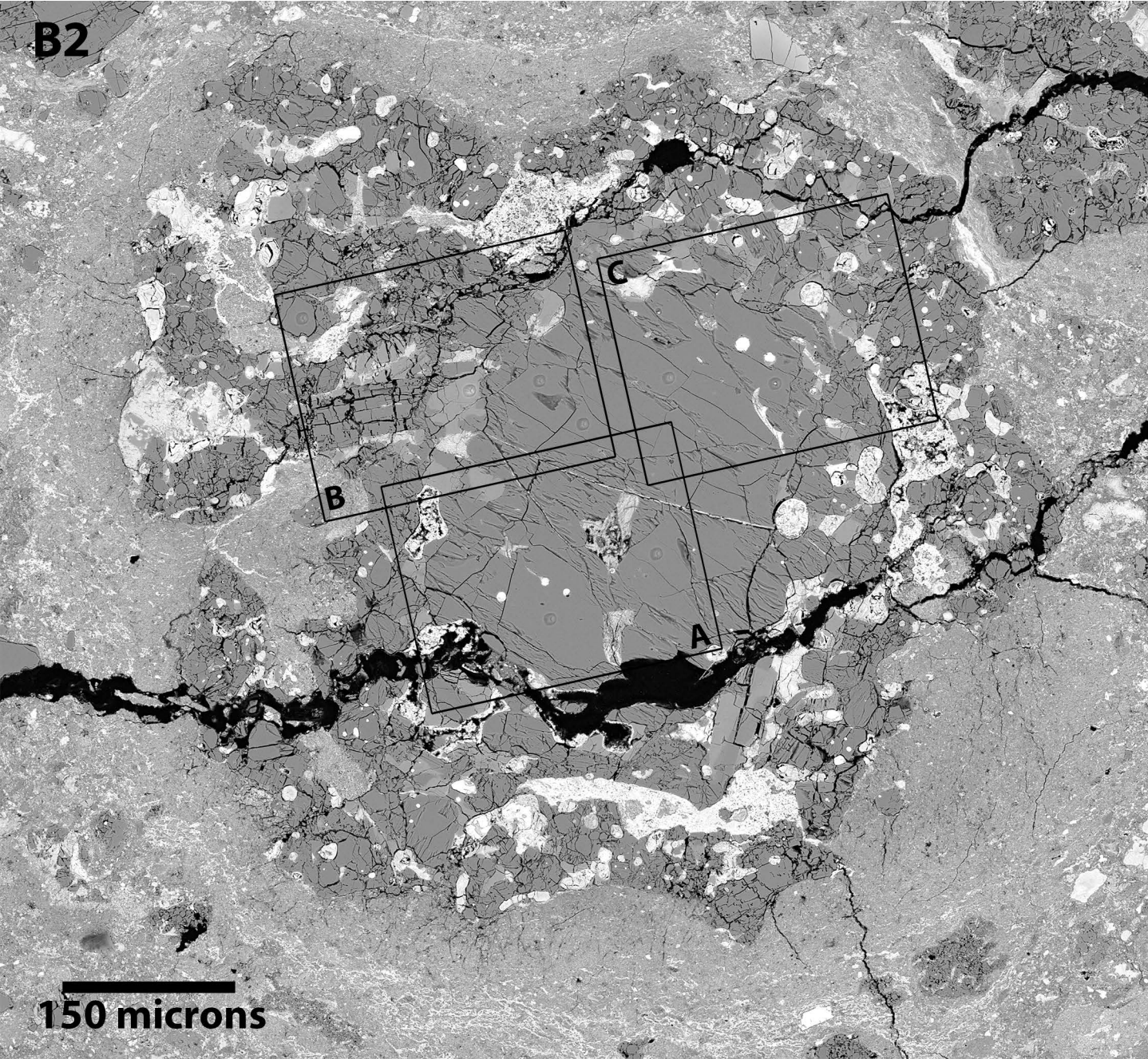
233.OI

231.OI

232.OI

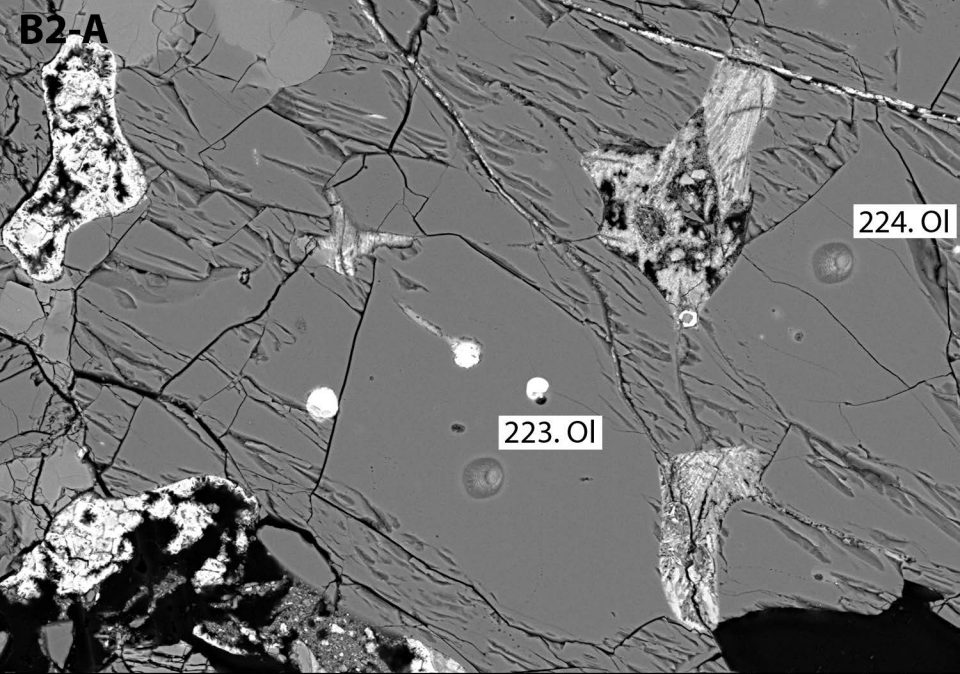
150 microns

B2



150 microns

B2-A



224.OI

223.OI

15.0kV x500 BSECOMP

100um

B2-B

228. OI

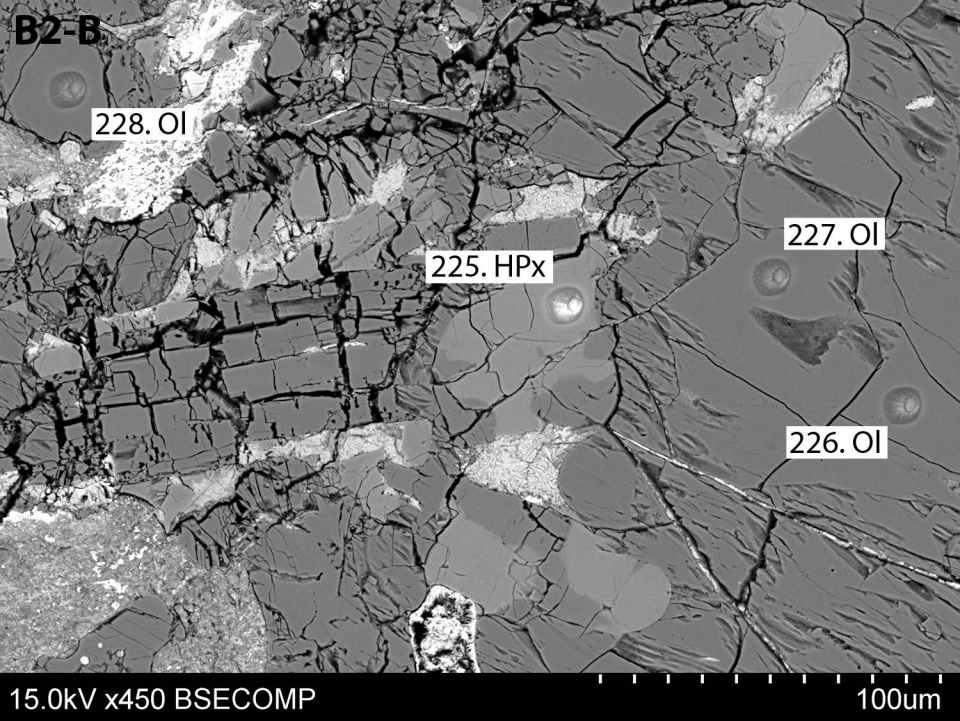
225. HPx

227. OI

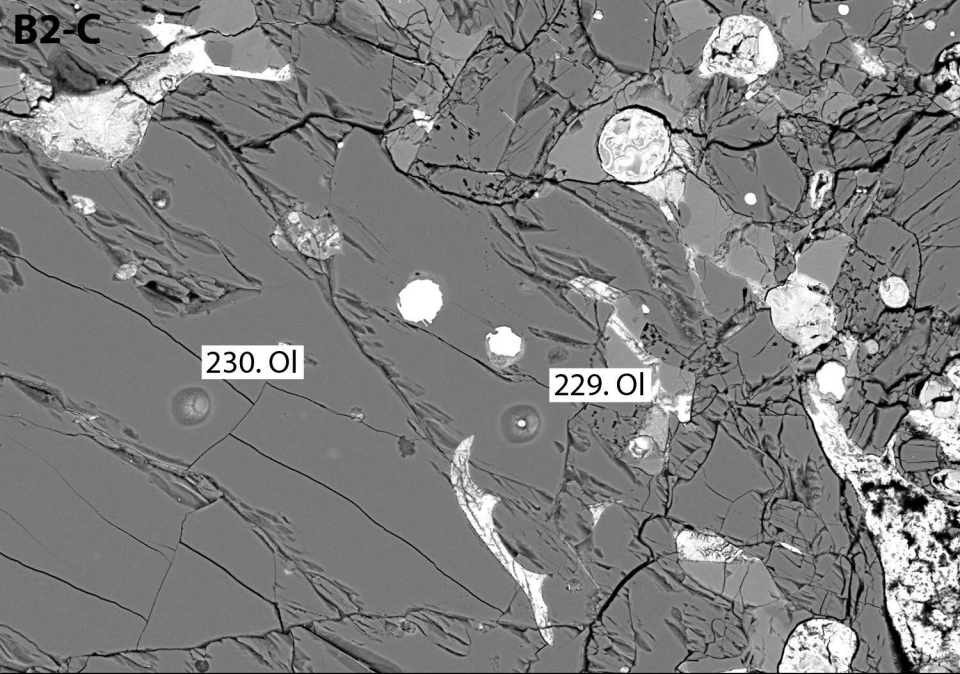
226. OI

15.0kV x450 BSECOMP

100um



B2-C



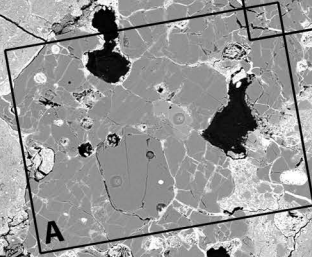
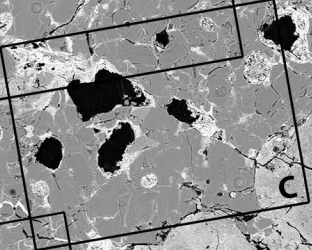
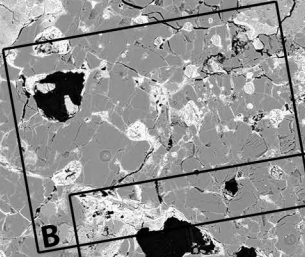
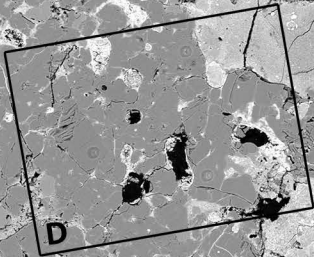
230. OI

229. OI

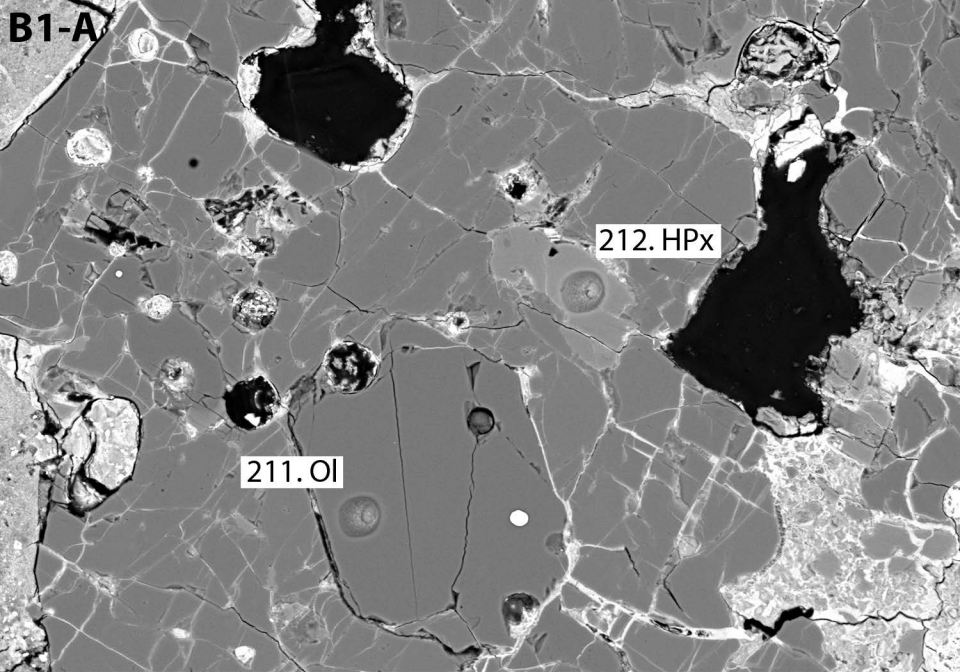
15.0kV x470 BSECOMP

100um

B1



200 microns



15.0kV x500 BSECOMP

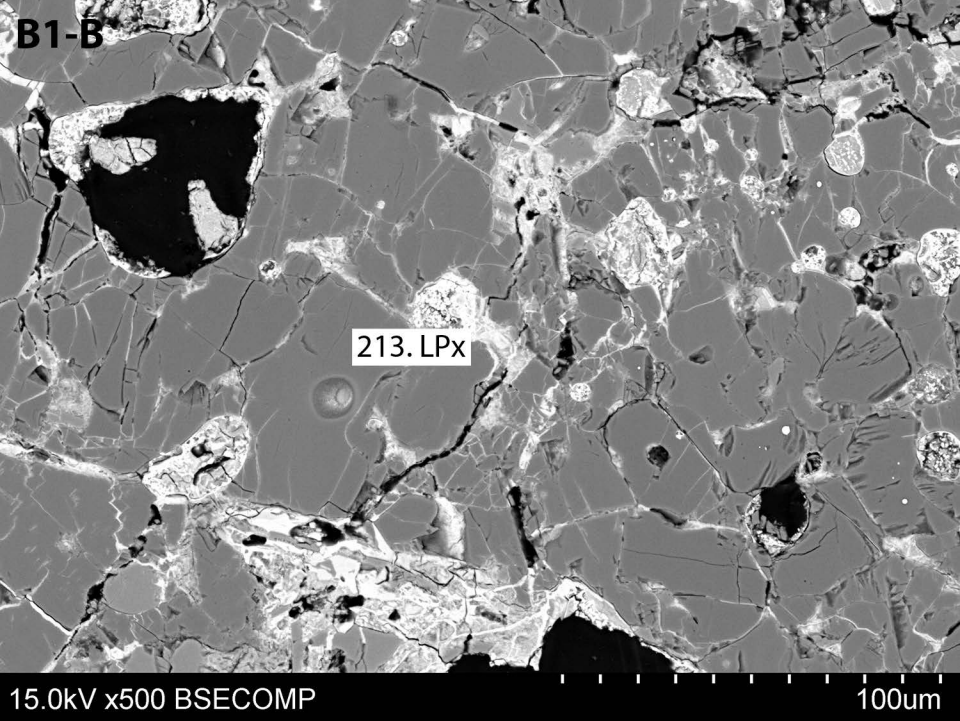
100um

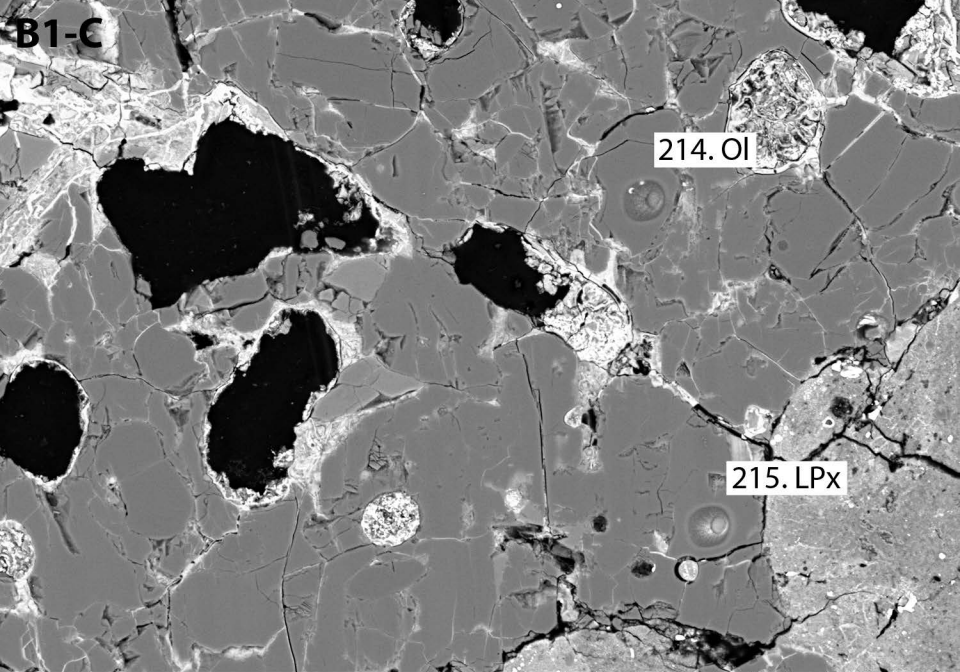
B1-B

213.LPx

15.0kV x500 BSECOMP

100um





15.0kV x500 BSECOMP

100um

B1-D

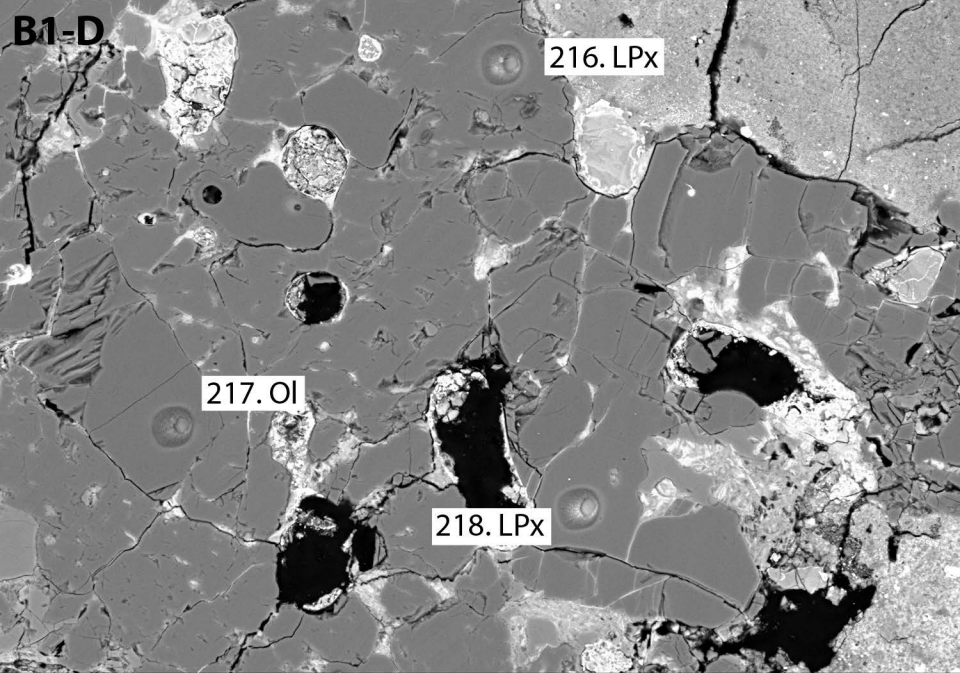
216. LPx

217. OI

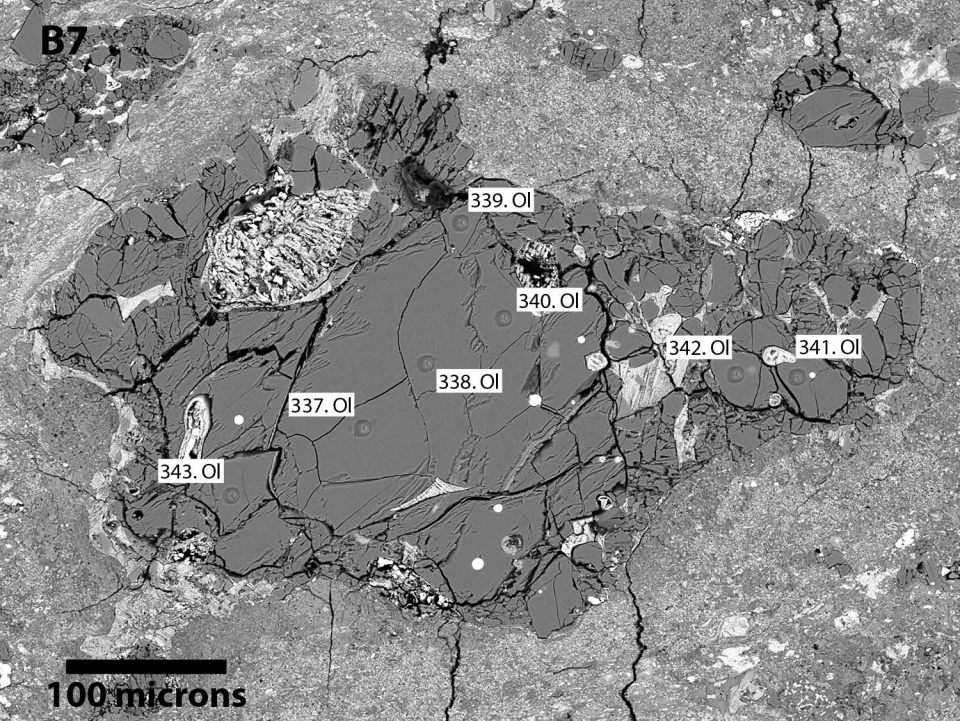
218. LPx

15.0kV x500 BSECOMP

100um



B7



339.OI

340.OI

342.OI

341.OI

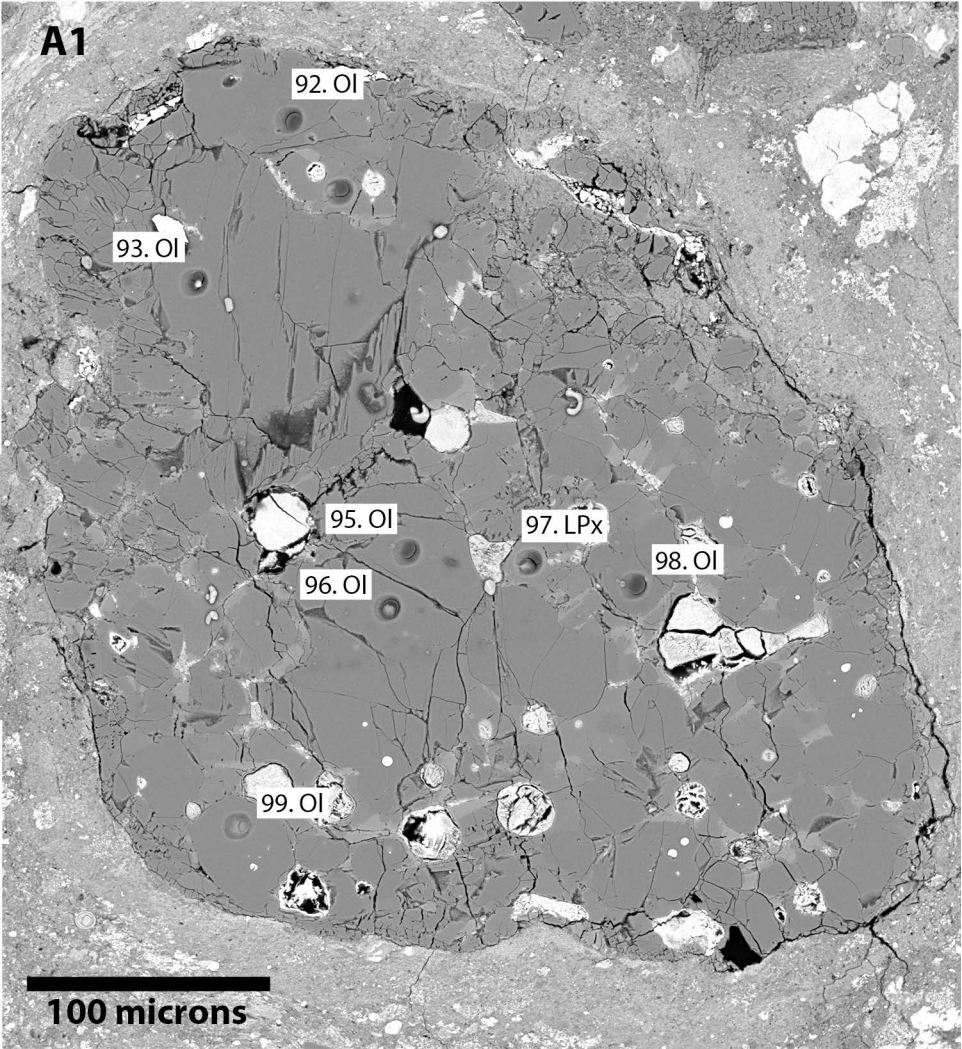
338.OI

337.OI

343.OI

100 microns

A1



92.OI

93.OI

95.OI

97.LPx

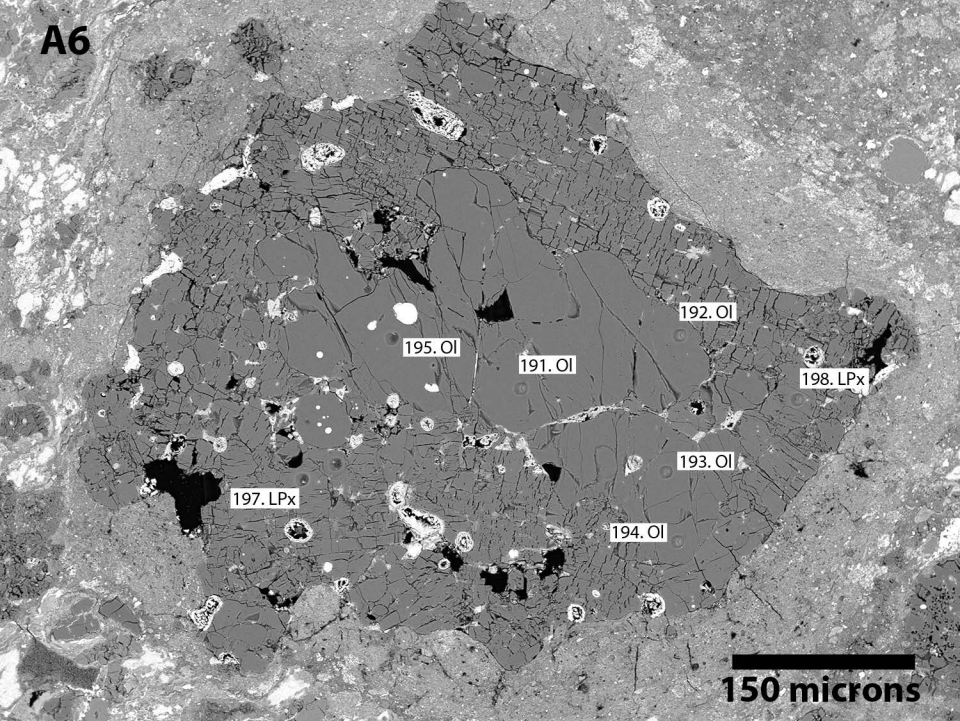
98.OI

96.OI

99.OI

100 microns

A6



195.OI

191.OI

192.OI

198.LPx

193.OI

197.LPx

194.OI

150 microns

C8

344. LPx

345. OI

347. LPx

346. OI

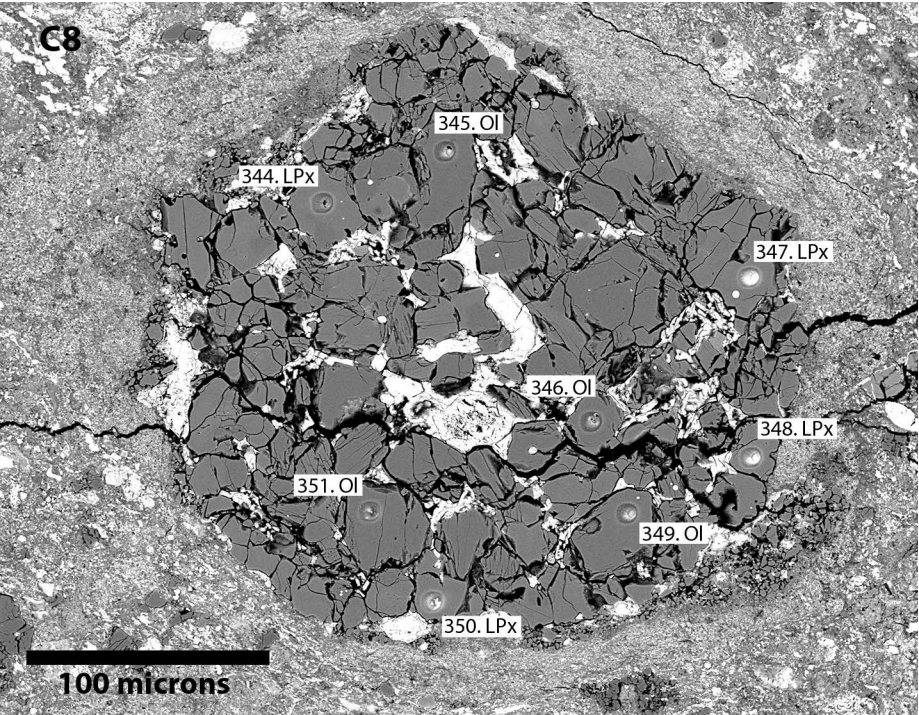
348. LPx

351. OI

349. OI

350. LPx

100 microns



C11

372. OI

371. OI

364. OI

367. OI

370. OI

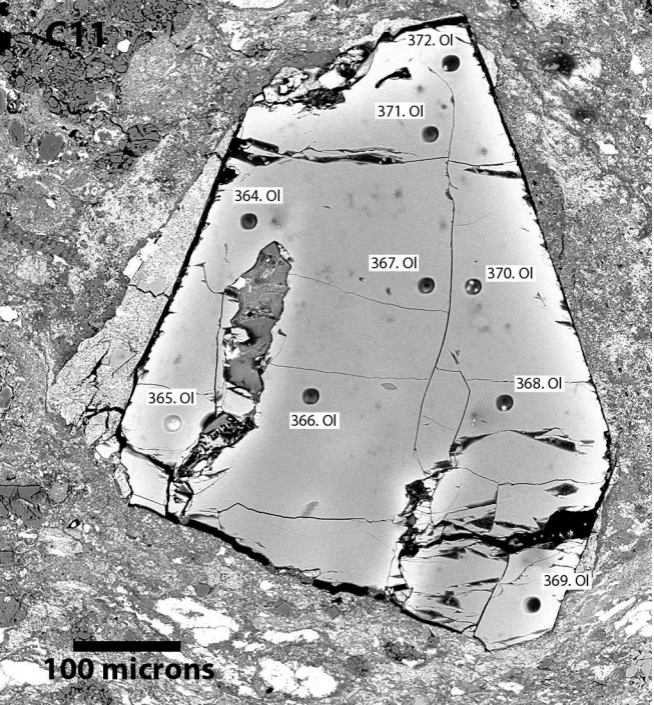
365. OI

366. OI

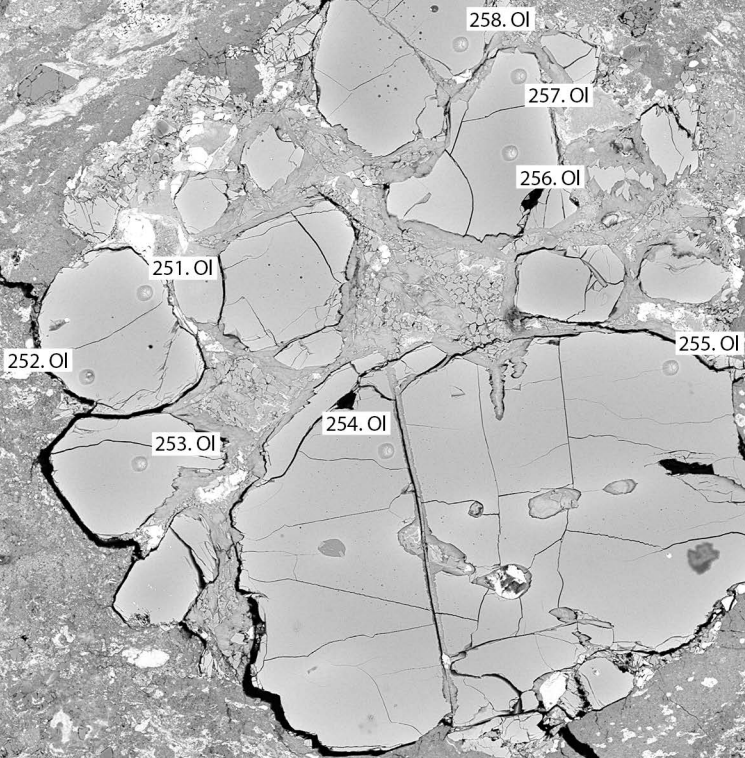
368. OI

369. OI

100 microns

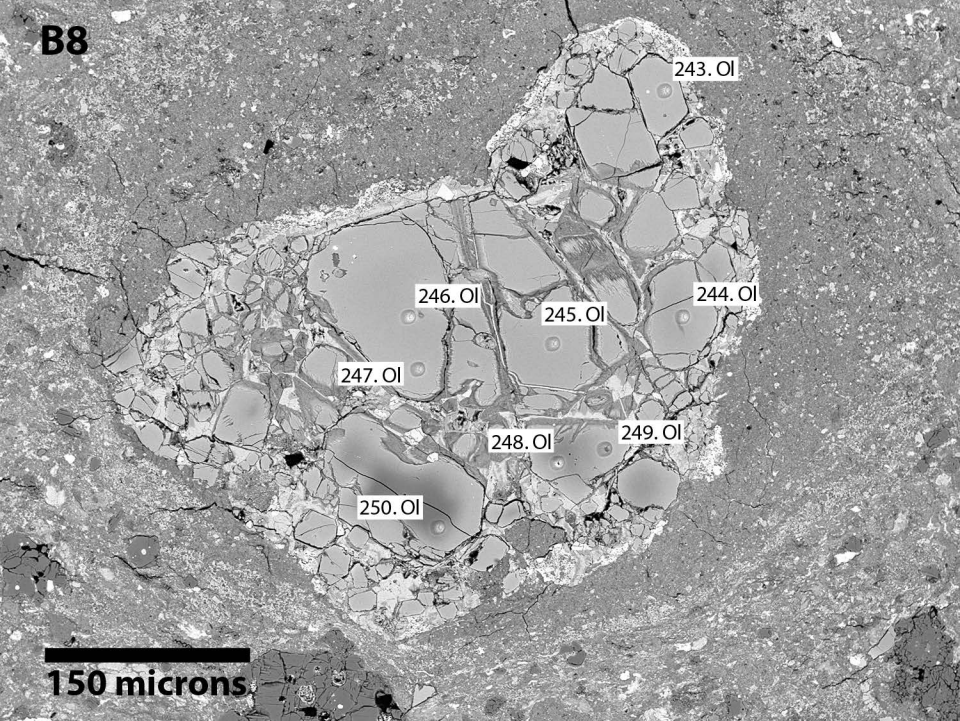


B9



150 microns

B8



243.OI

246.OI

245.OI

244.OI

247.OI

248.OI

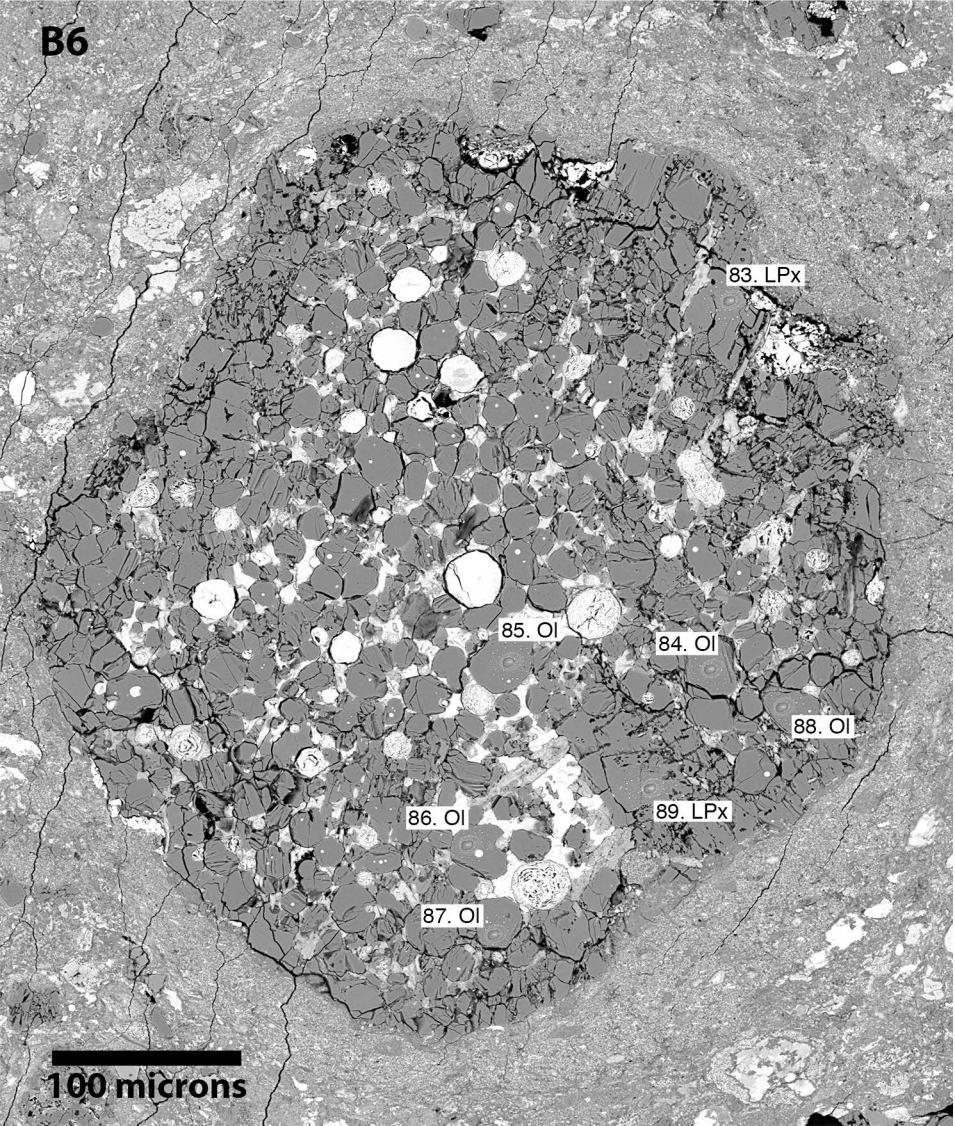
249.OI

250.OI

150 microns

Homogeneous chondrules – 10 microns diameter spots

B6



83. LPx

85. OI

84. OI

88. OI

86. OI

89. LPx

87. OI

100 microns

B4

79. OI

80. OI

78. OI

76. OI

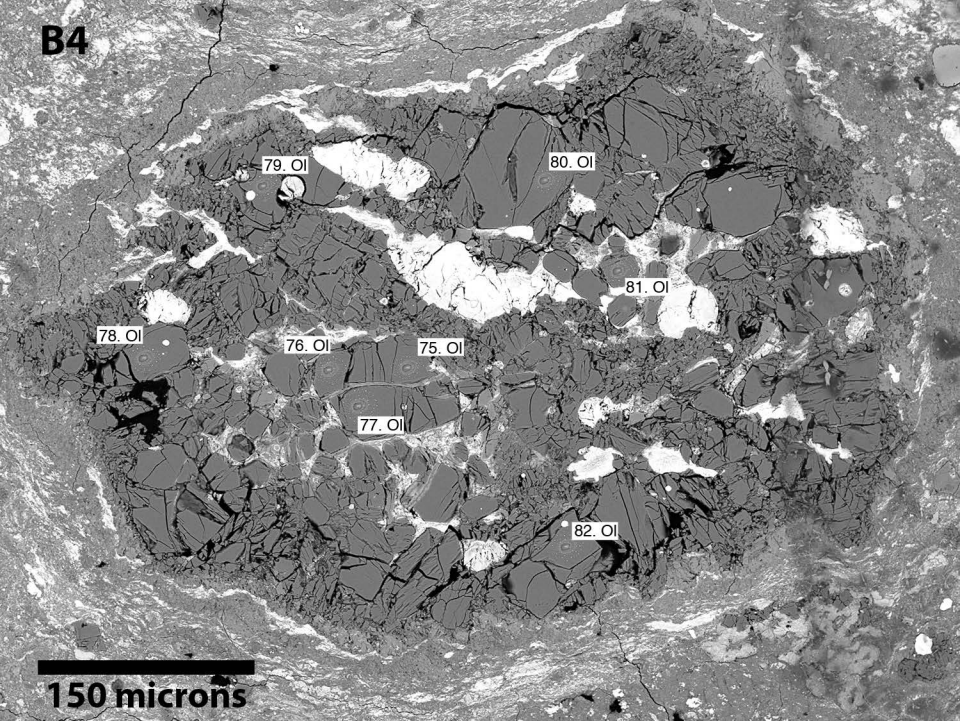
75. OI

81. OI

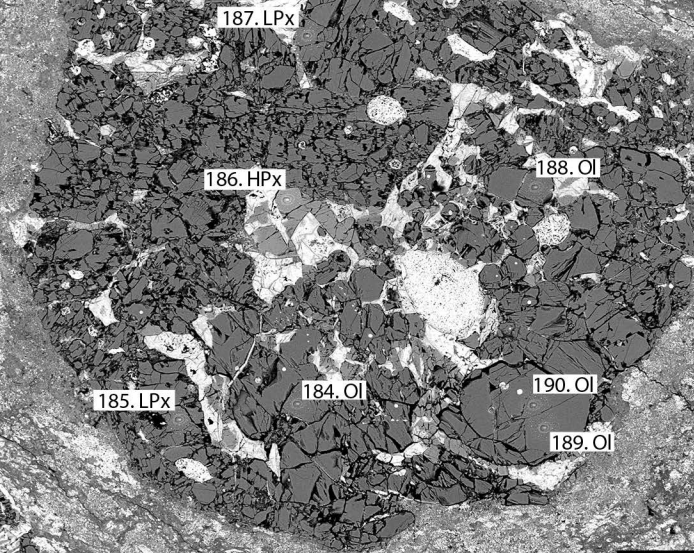
77. OI

82. OI

150 microns

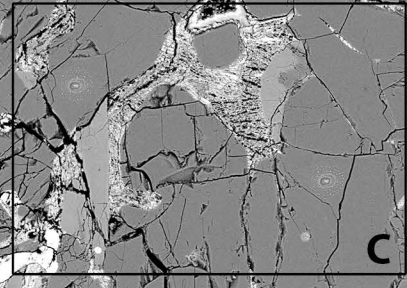
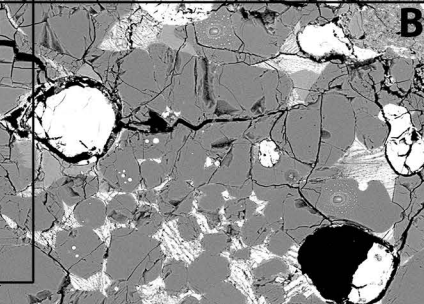
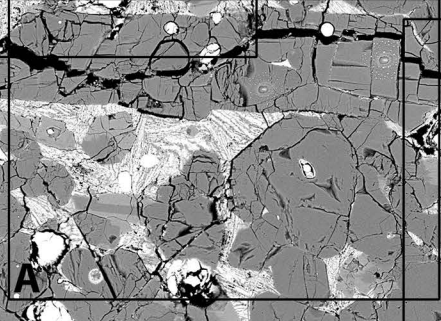
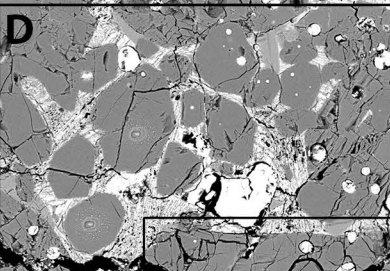
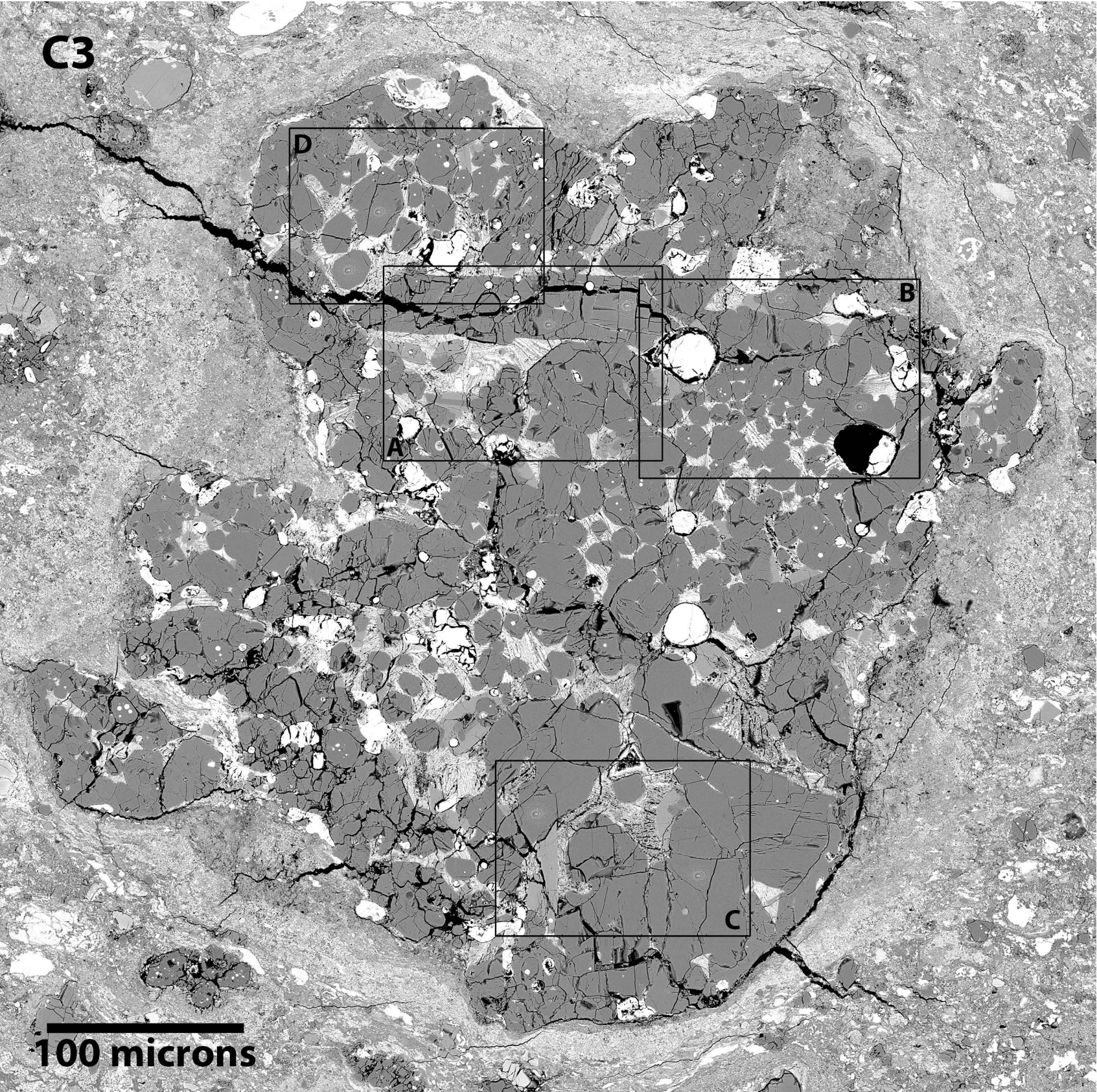


C5

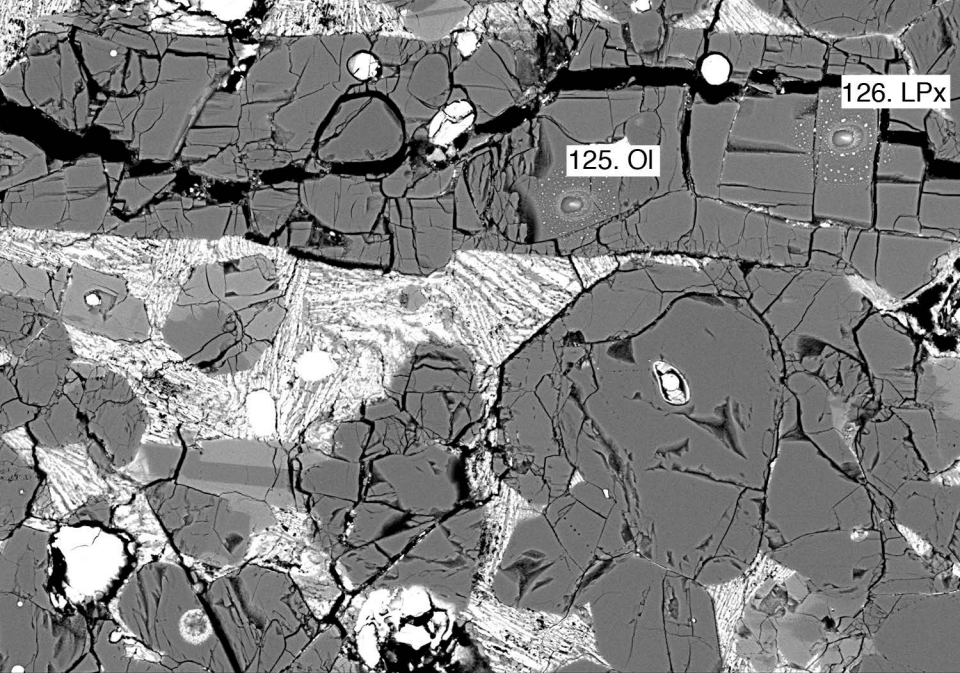


100 microns

C3

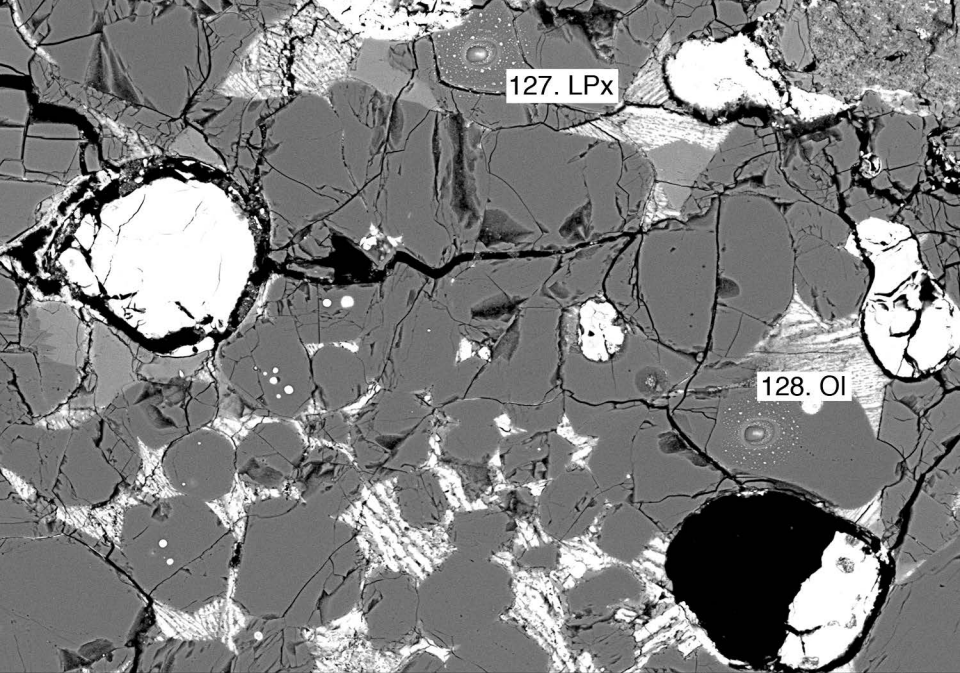


100 microns



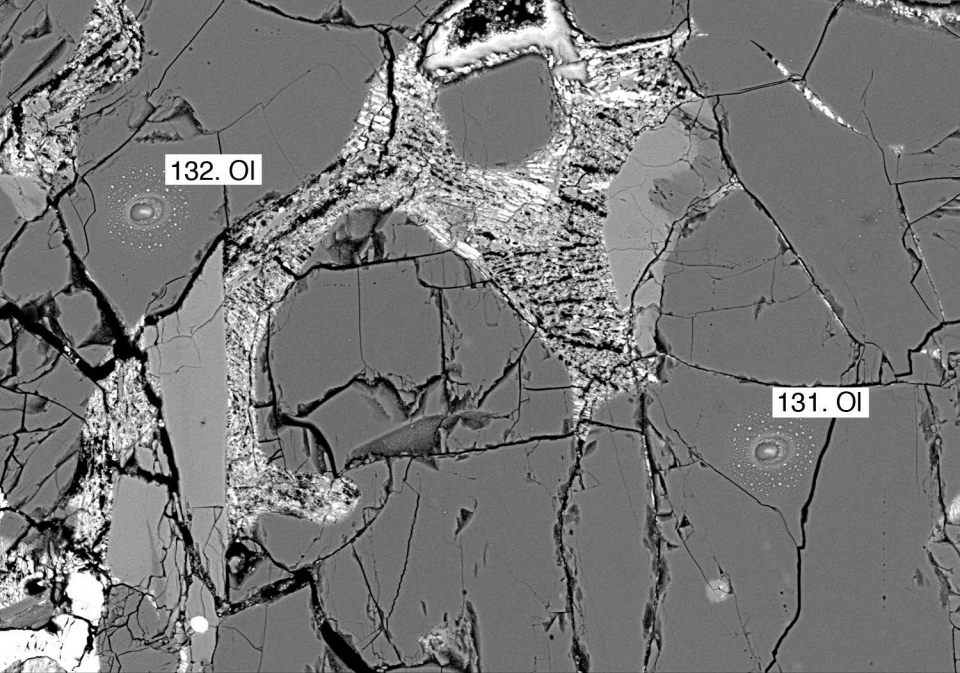
126. LPx

125. OI



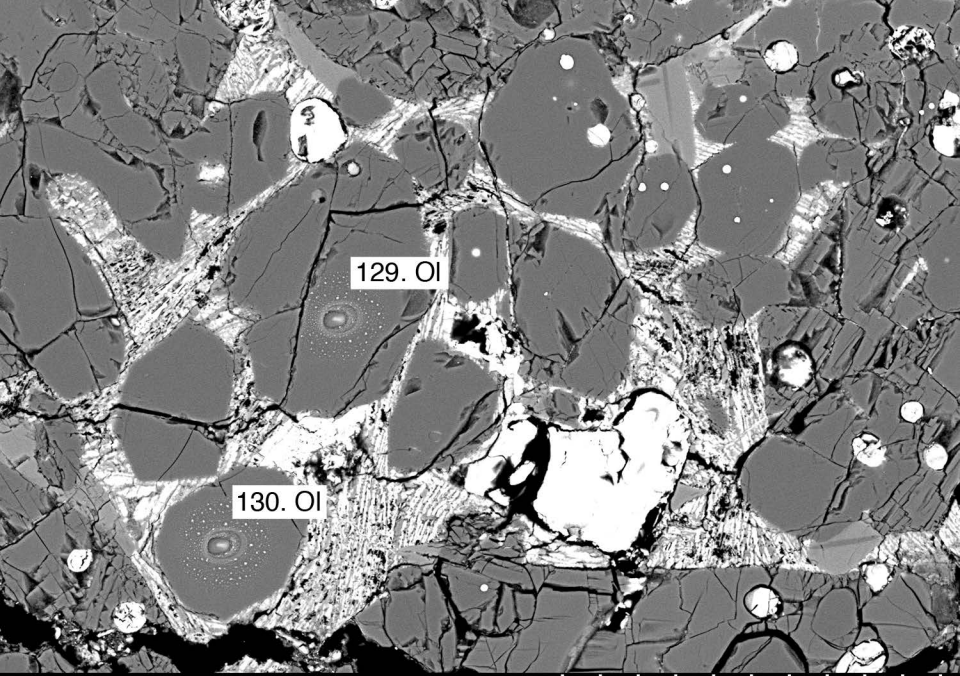
127. LPx

128. OI



132. OI

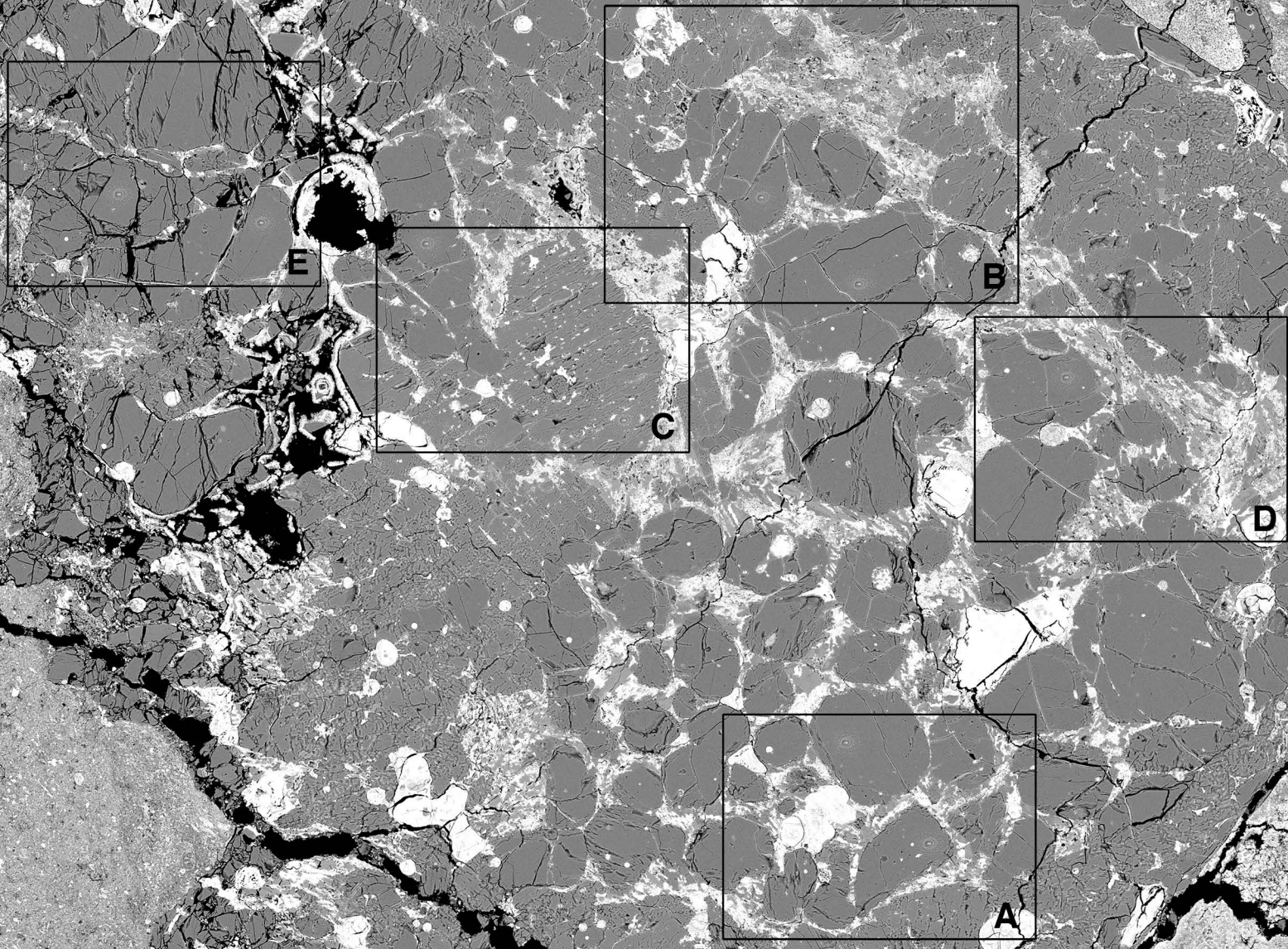
131. OI



129.OI

130.OI

C1



100 microns

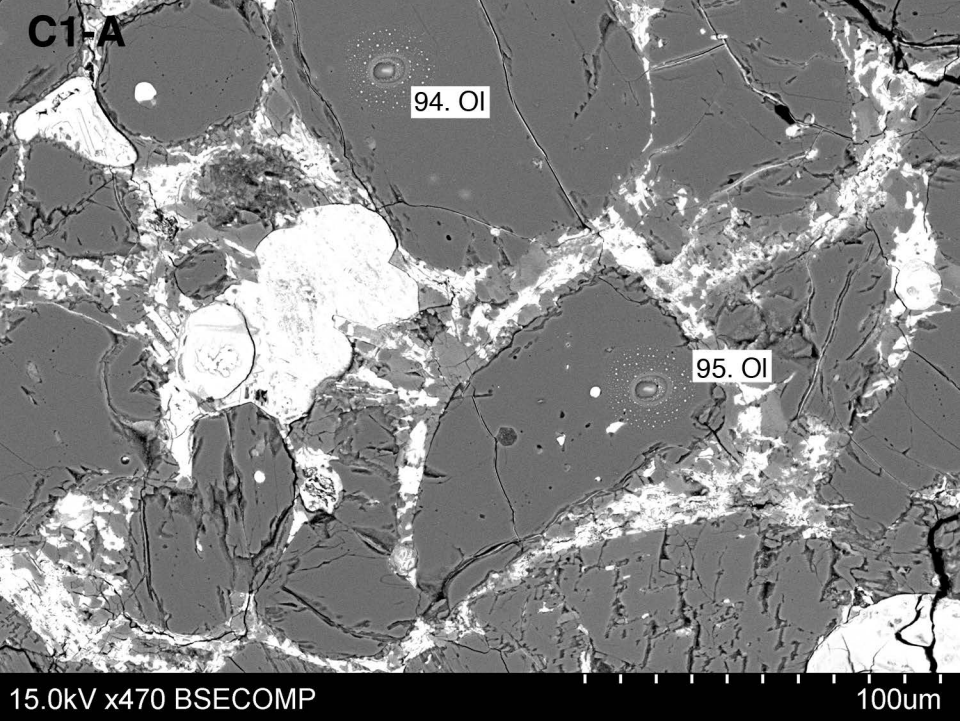
C1-A

94. OI

95. OI

15.0kV x470 BSECOMP

100um



C1-B

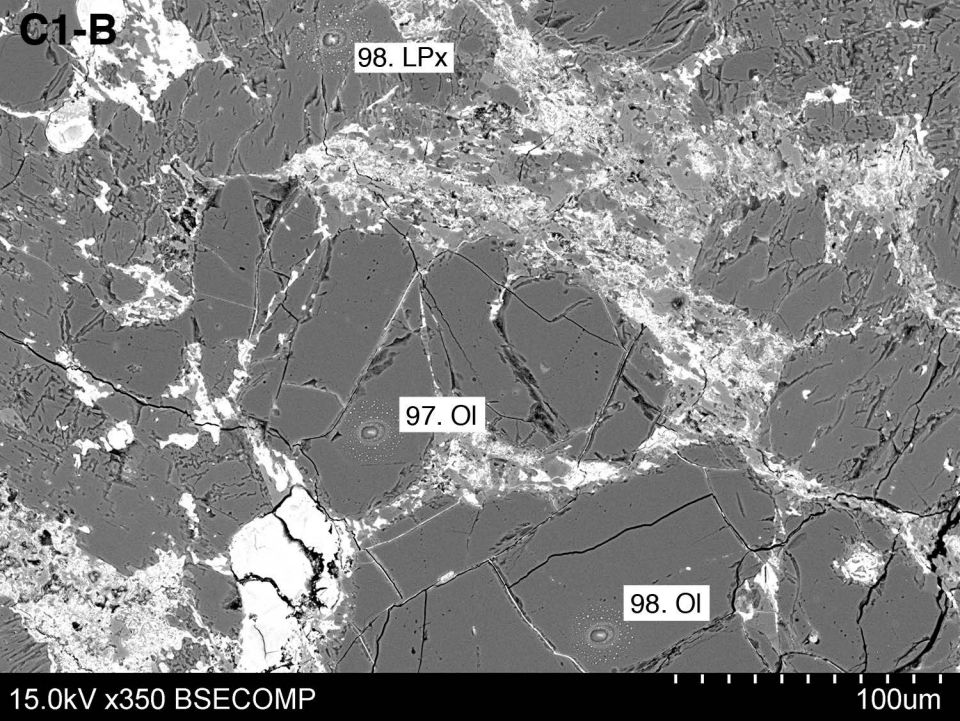
98. LPx

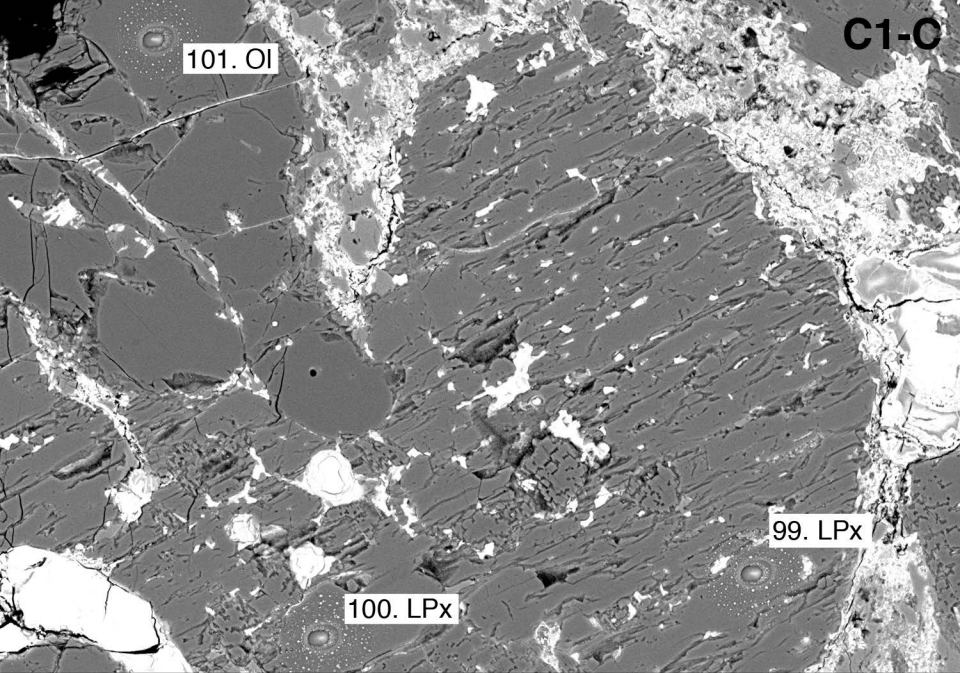
97. OI

98. OI

15.0kV x350 BSECOMP

100um





101. OI

C1-O

99. LPx

100. LPx

100um

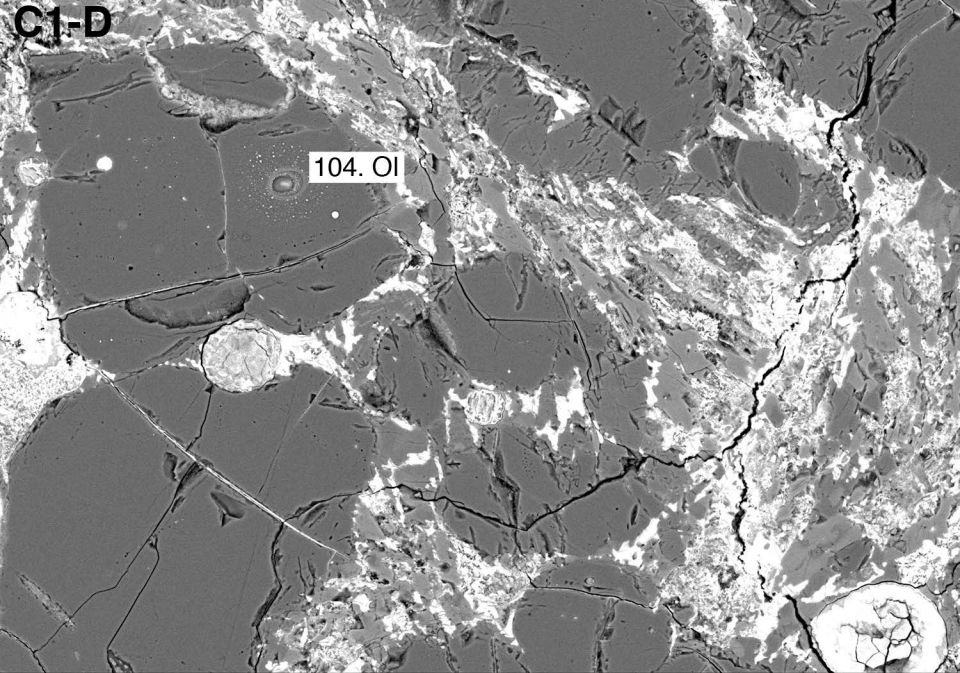
15.0kV x450 BSECOMP

C1-D

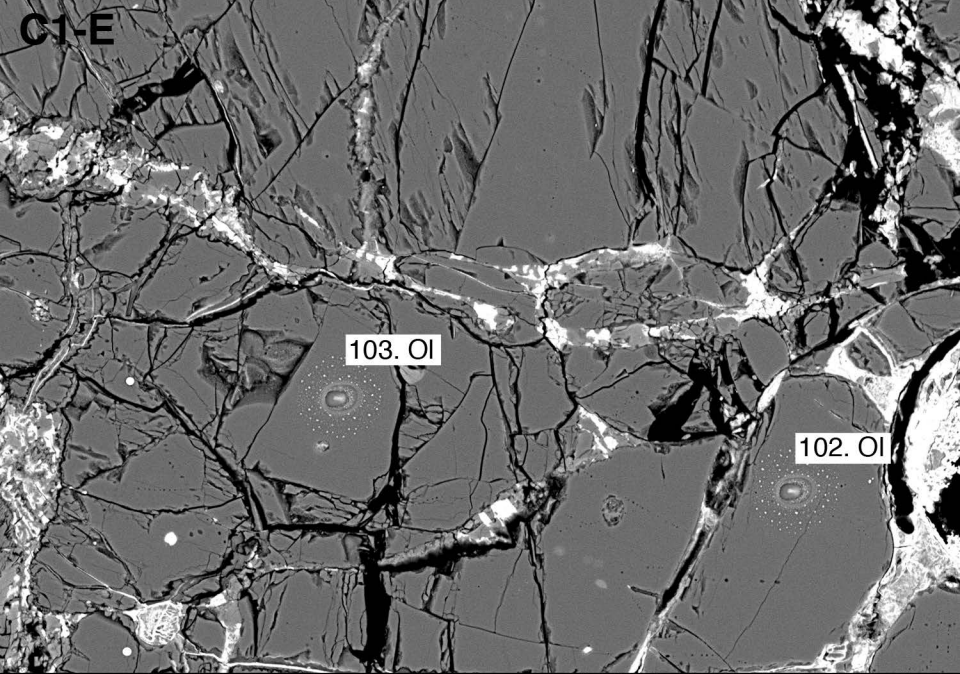
104. OI

15.0kV x450 BSECOMP

100um



C1-E



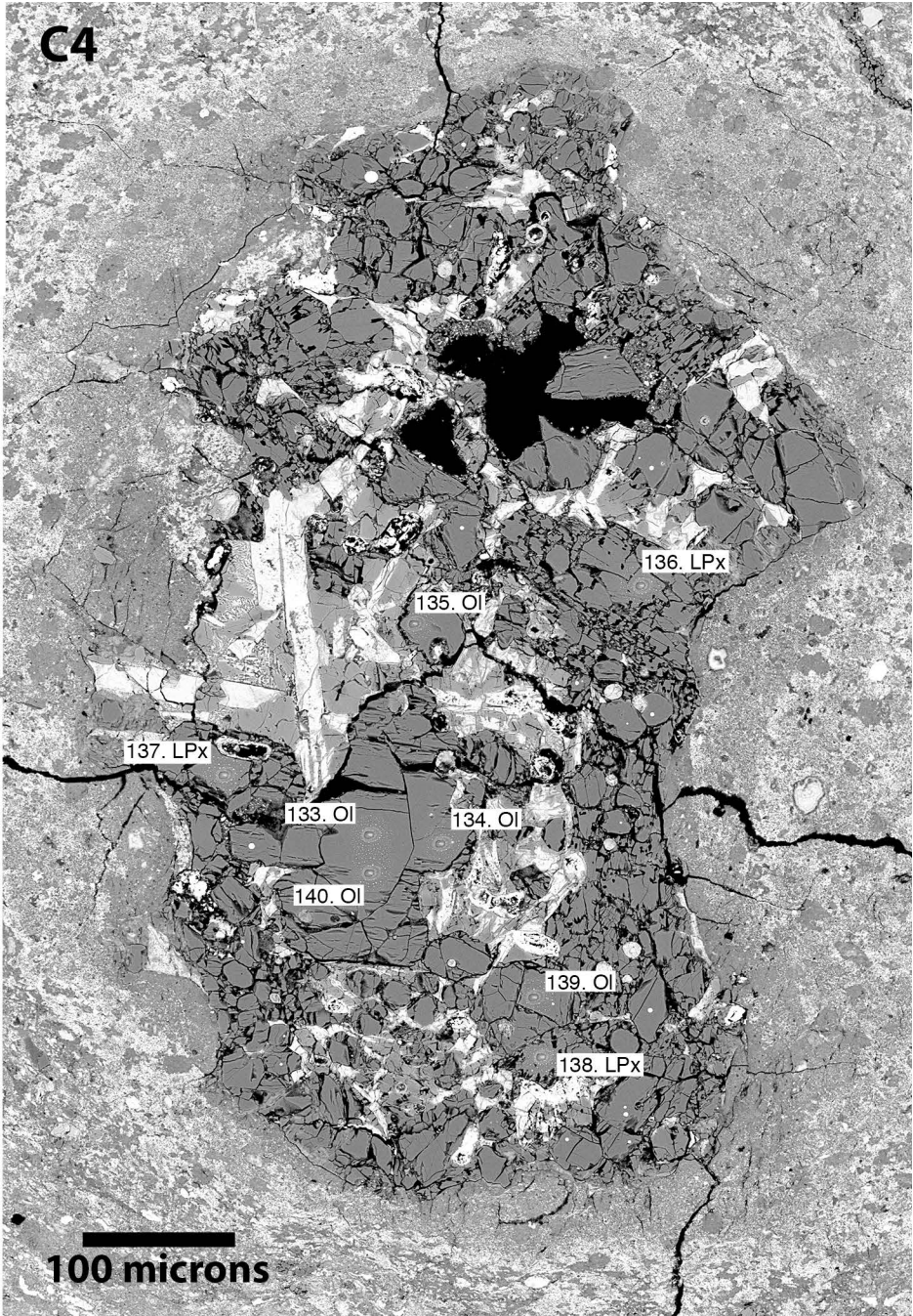
103. OI

102. OI

15.0kV x470 BSECOMP

100um

C4



100 microns

A3

38. OI

35. OI

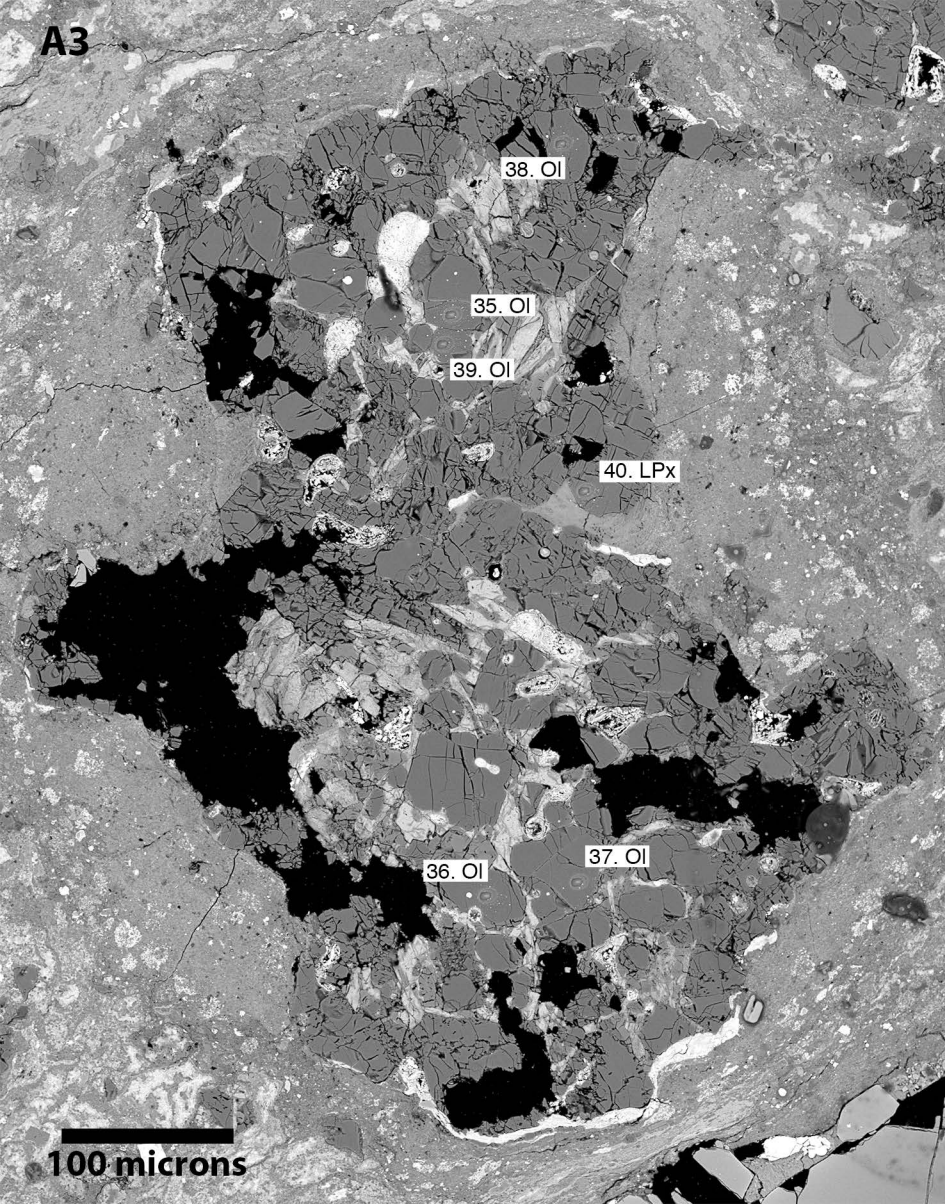
39. OI

40. LPx

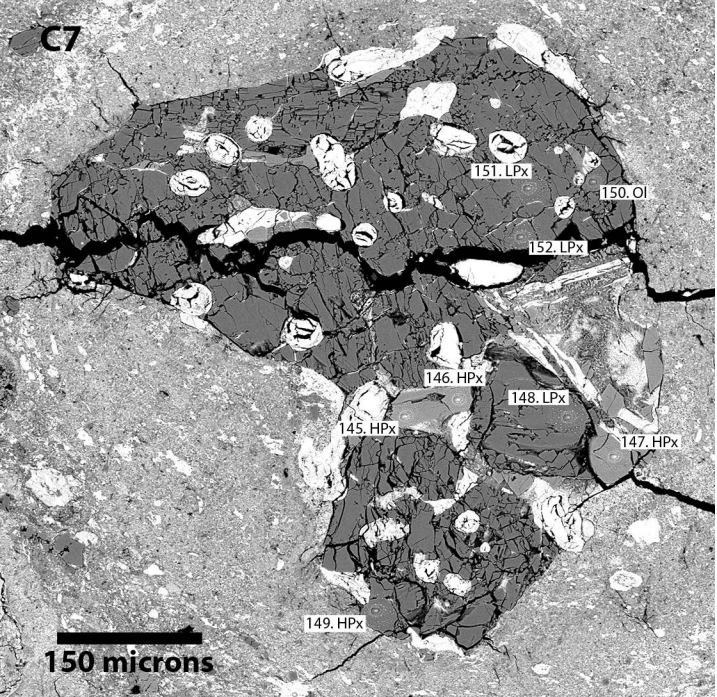
36. OI

37. OI

100 microns



C7



151.LPx

150.OI

152.LPx

146.HPx

148.LPx

147.HPx

145.HPx

149.HPx

150 microns

C12

167.OI

166.OI

165.OI

168.OI

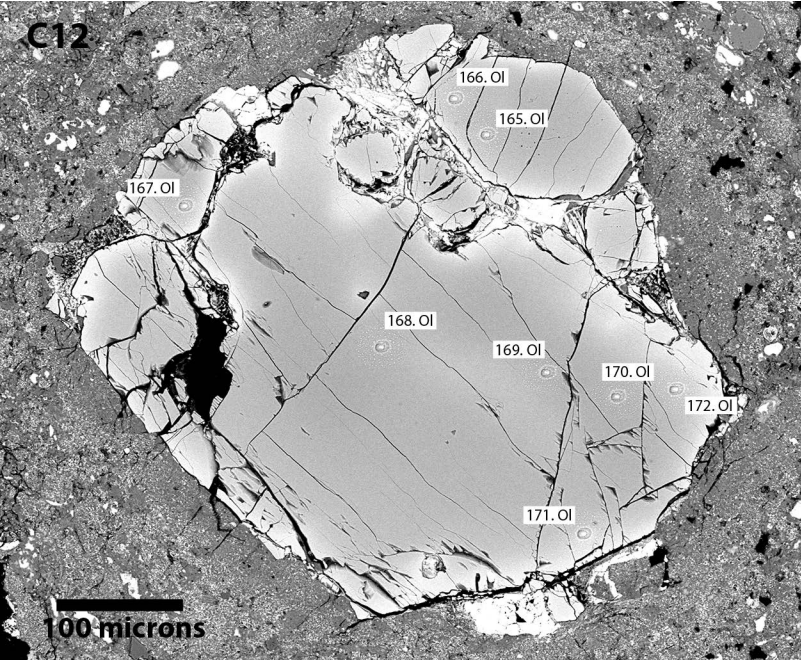
169.OI

170.OI

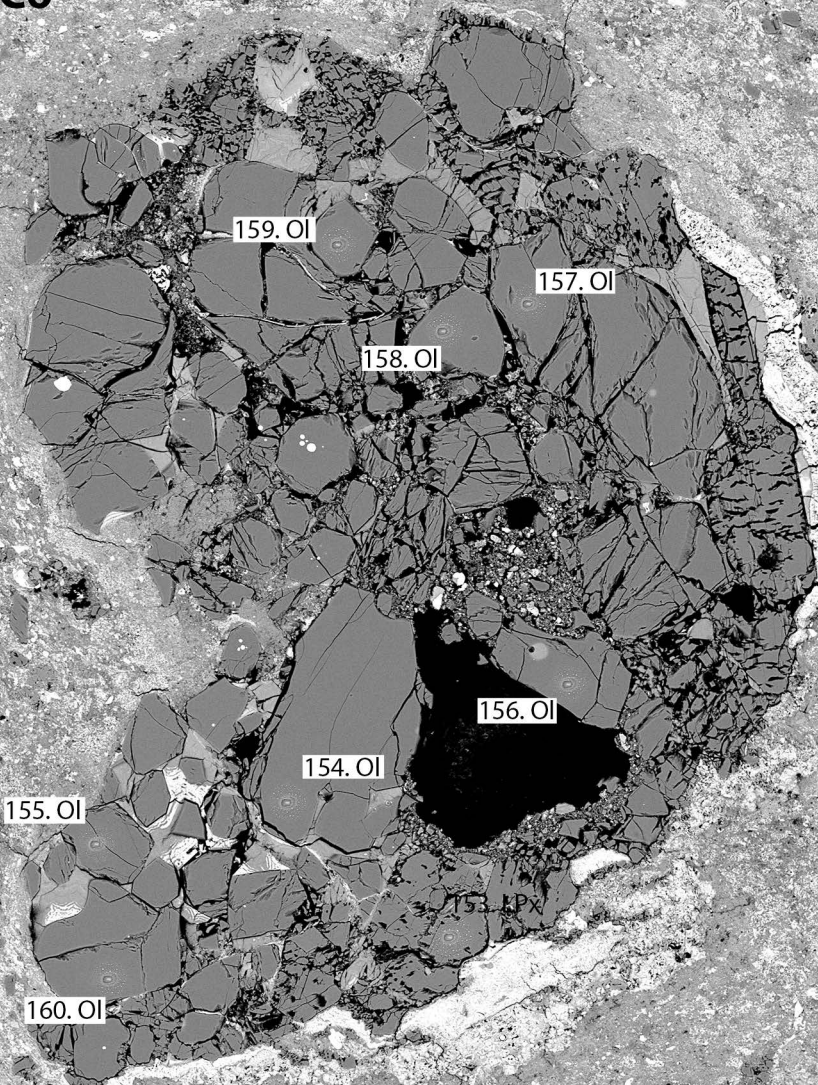
172.OI

171.OI

100 microns



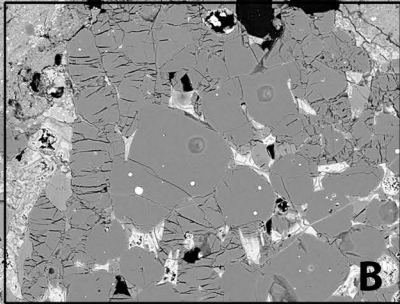
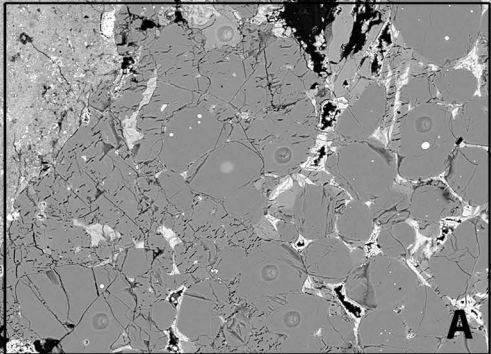
C6



100 microns

Heterogeneous chondrules – 15 microns diameter spots

A7



200 microns

A7-A

208. HPx

206. OI

207. LPx

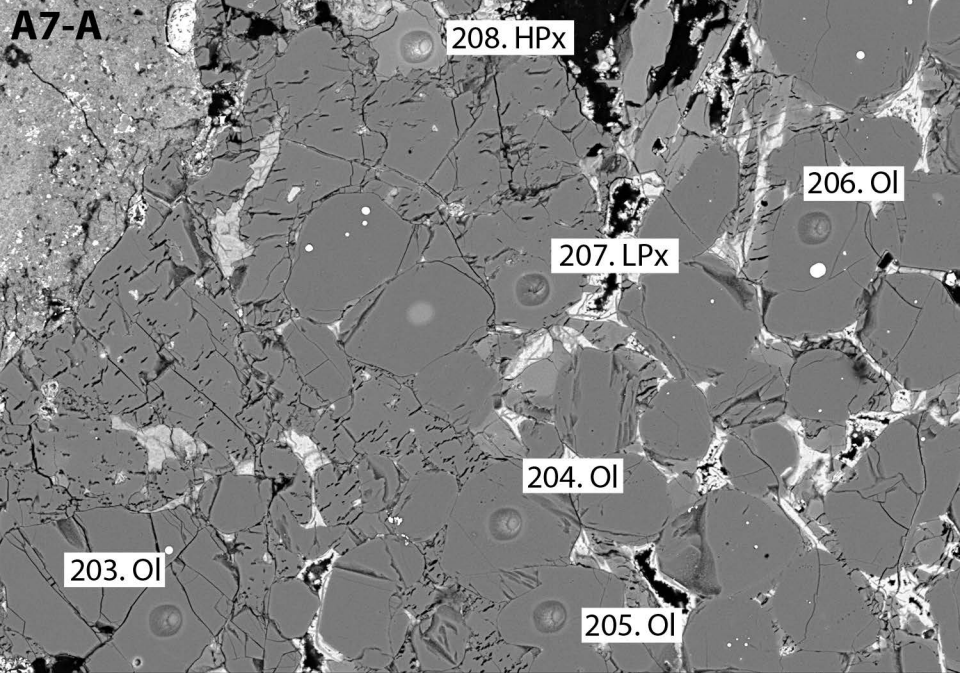
204. OI

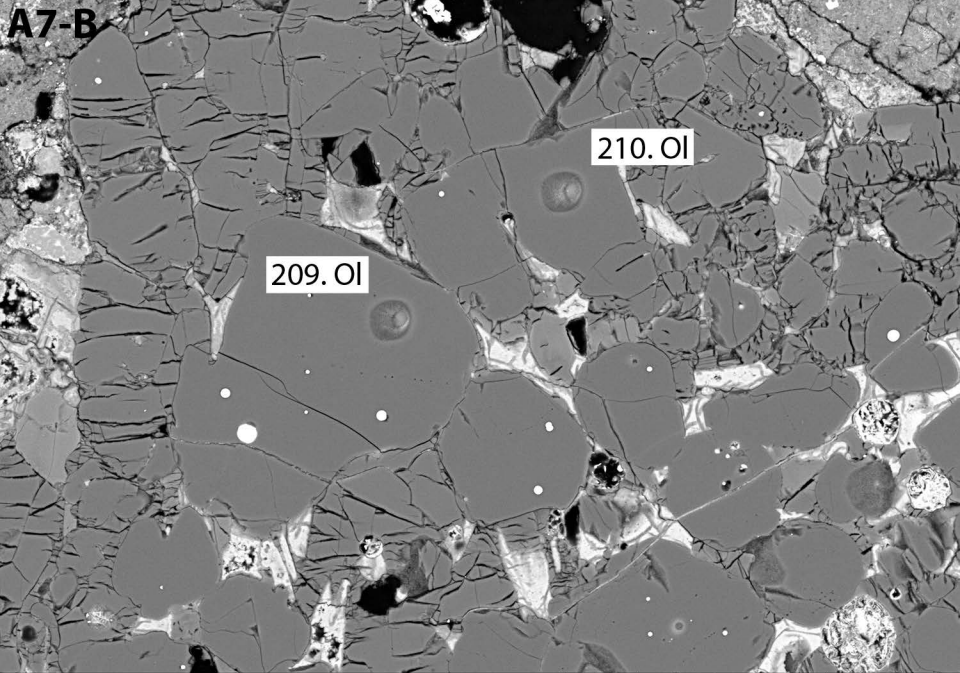
203. OI

205. OI

15.0kV x400 BSECOMP

100um



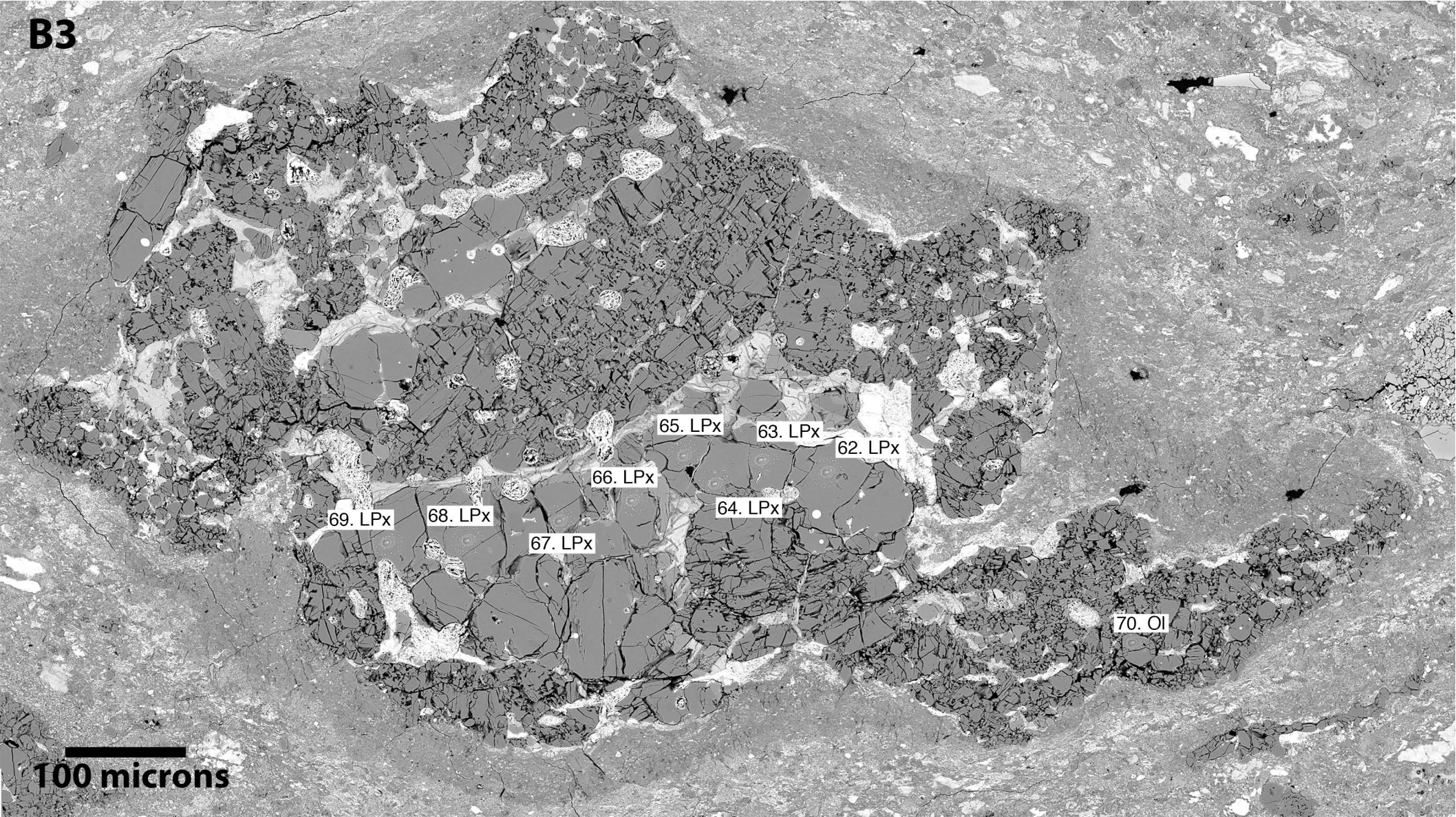


15.0kV x500 BSECOMP

100um

Heterogeneous chondrules – 10 microns diameter spots

B3



65. LPx

63. LPx

62. LPx

66. LPx

64. LPx

69. LPx

68. LPx

67. LPx

70. OI

100 microns

A8

54. LPx

55. OI

56. OI

61. OI

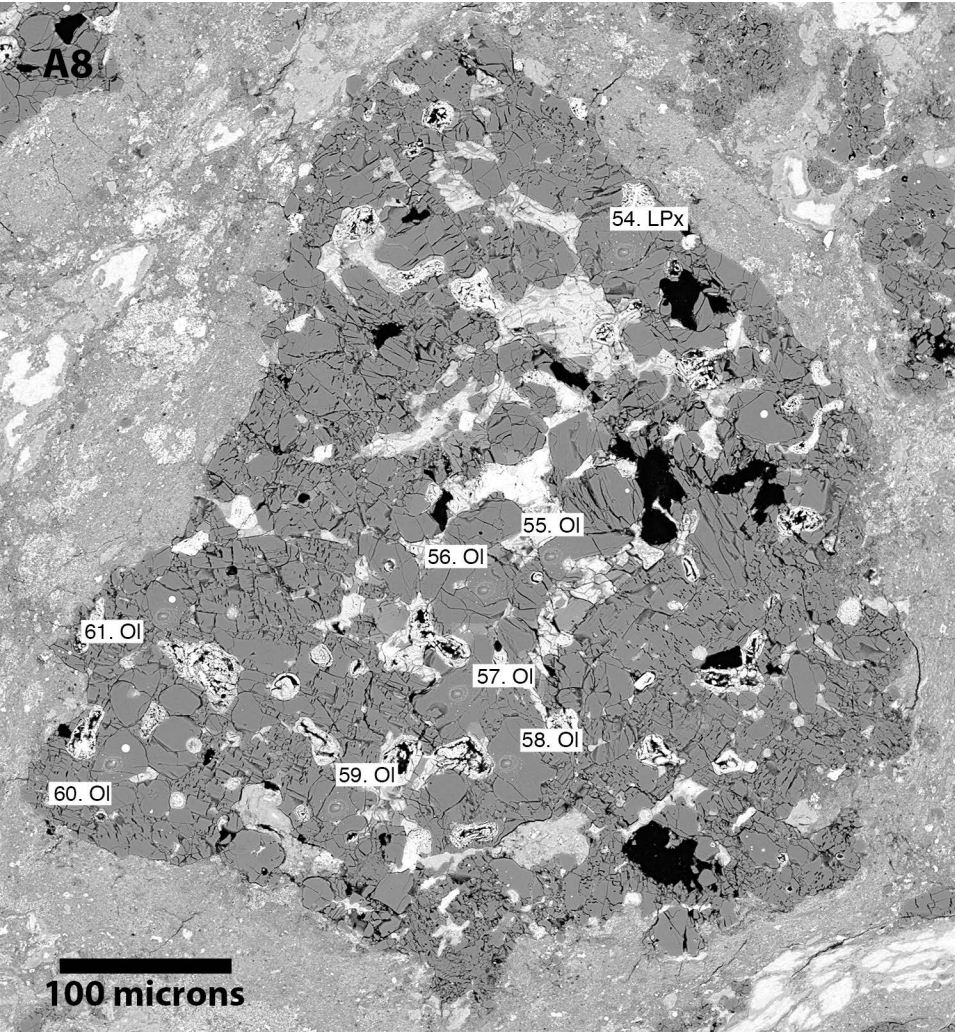
57. OI

58. OI

60. OI

59. OI

100 microns



A4

41. LPx

47. OI

48. LPx

46. OI

44. OI

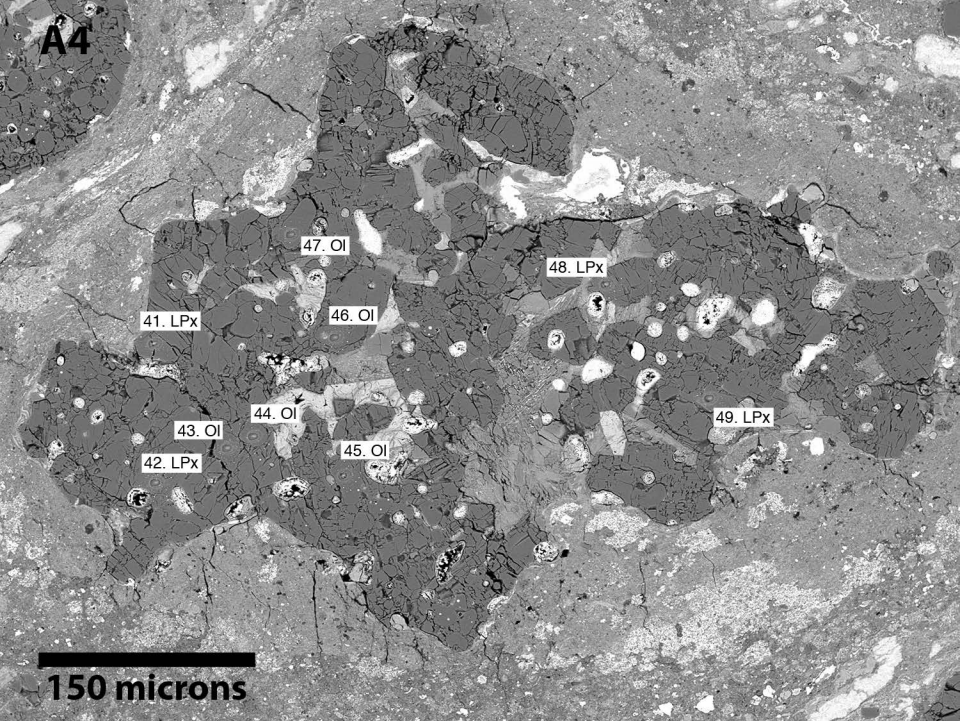
49. LPx

43. OI

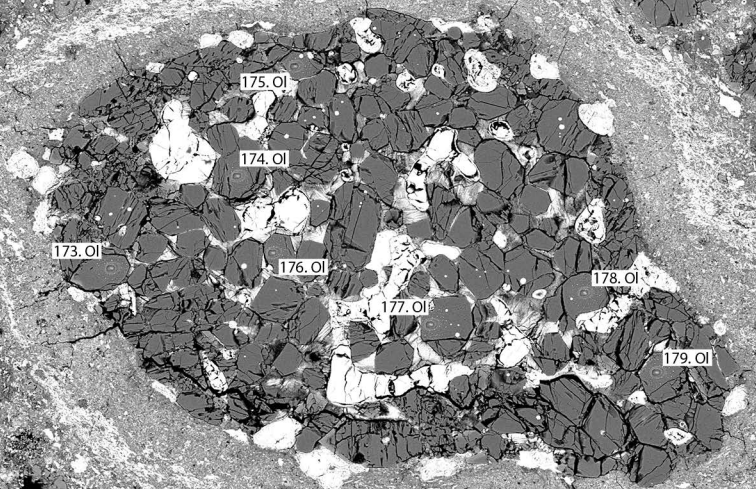
45. OI

42. LPx

150 microns



C10



100 microns