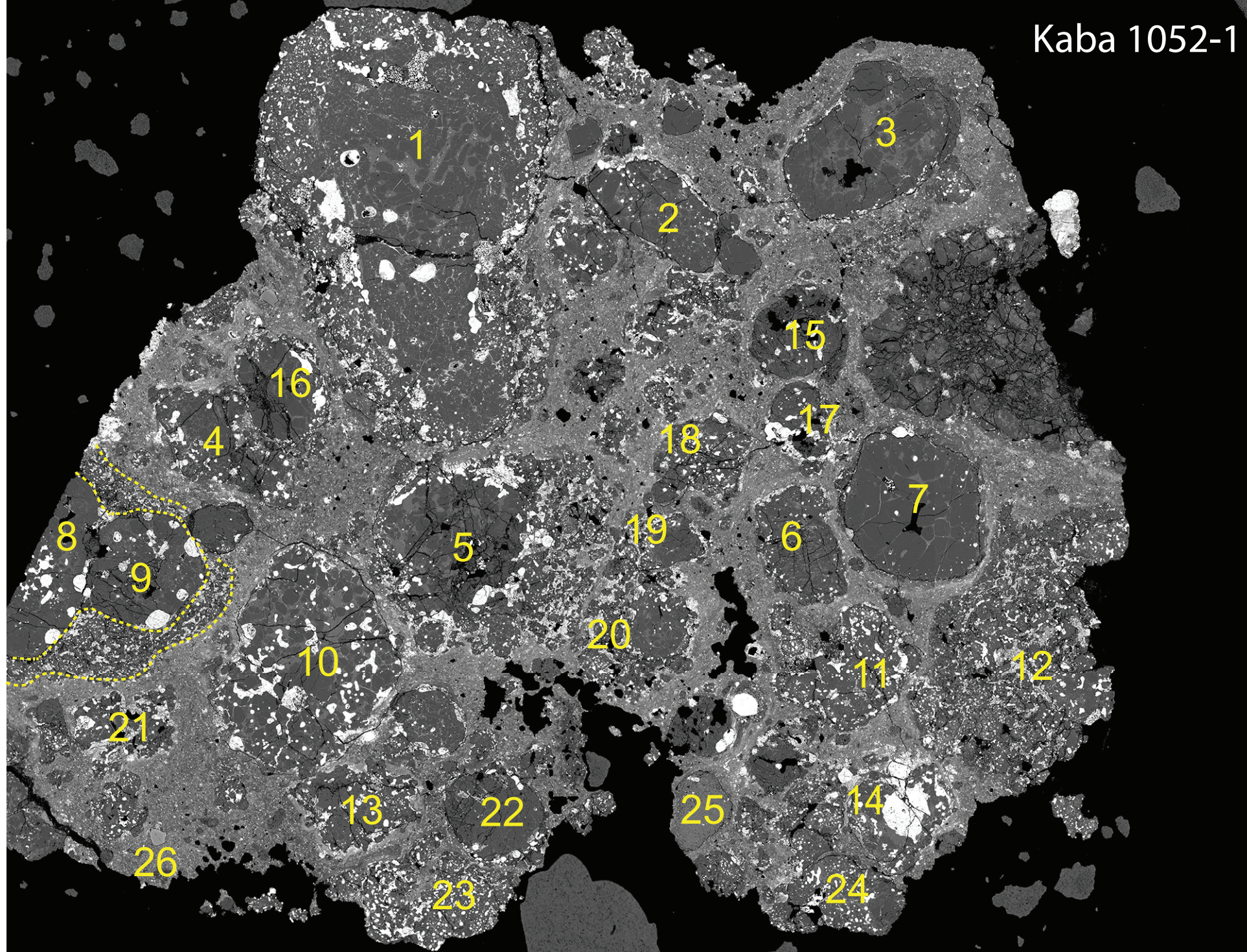


Hertwig et al. 2017: Formation of chondrules in a moderately high dust enriched disk: evidence from oxygen isotopes of chondrules from the Kaba CV3 chondrite

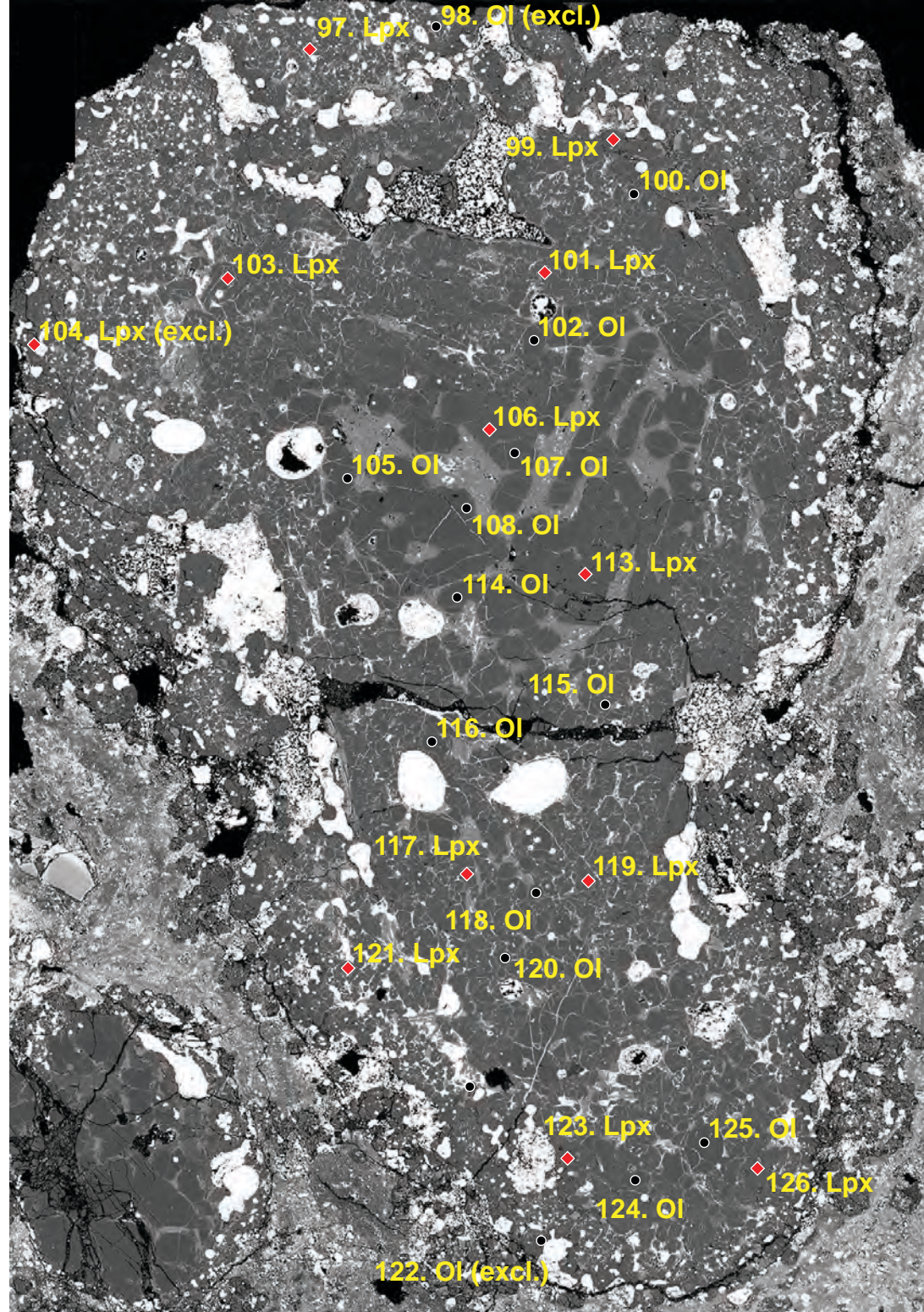
EA1: BSE mosaic of the Kaba USNM 1052-1 thin section and BSE images of individual chondrules including positions of SIMS measurements

excl.: Analysis excluded because of pit imperfections (see EA2)

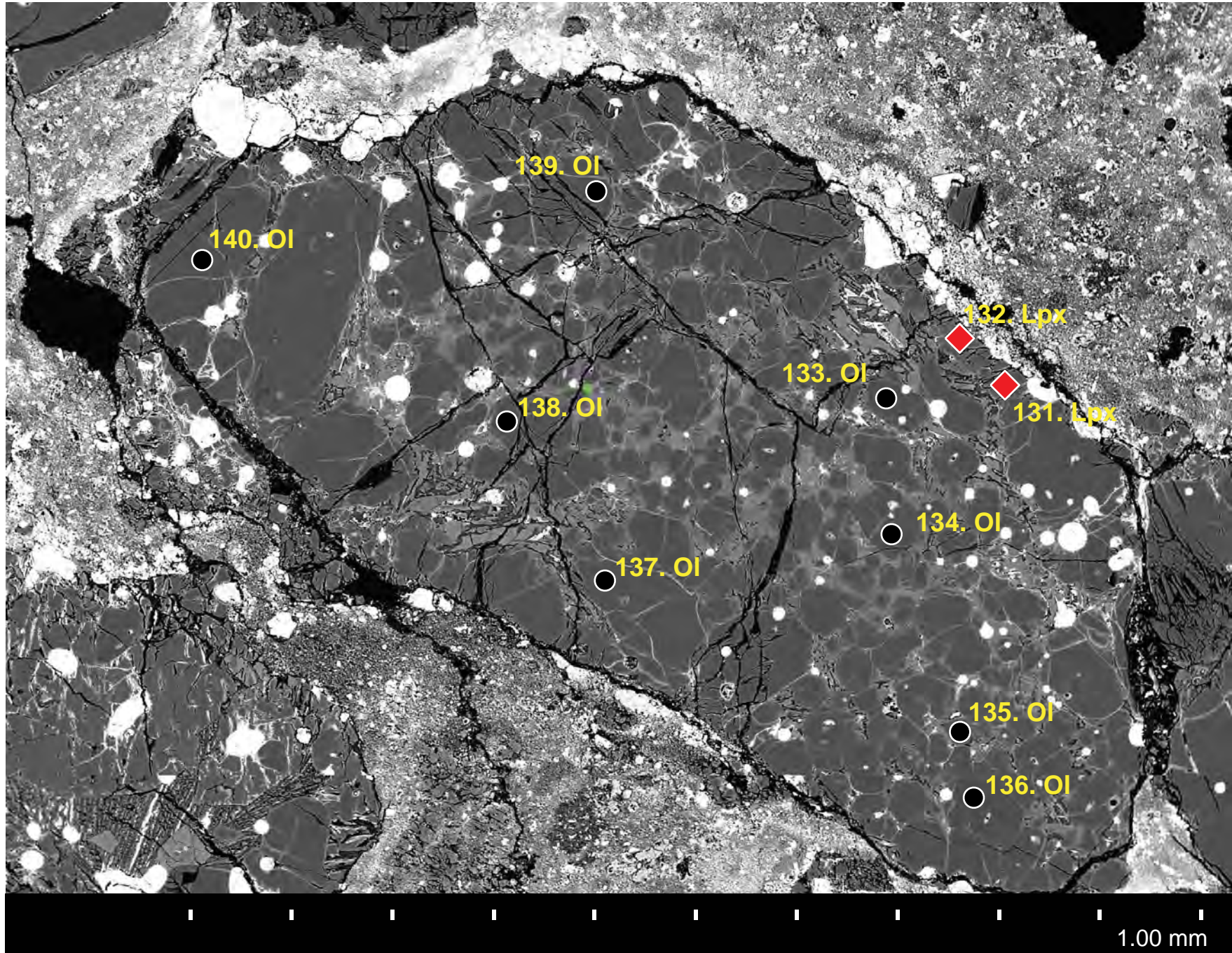
Ol: Olivine; Lpx: low-Ca pyroxene; IntPx: intermediate pyroxene



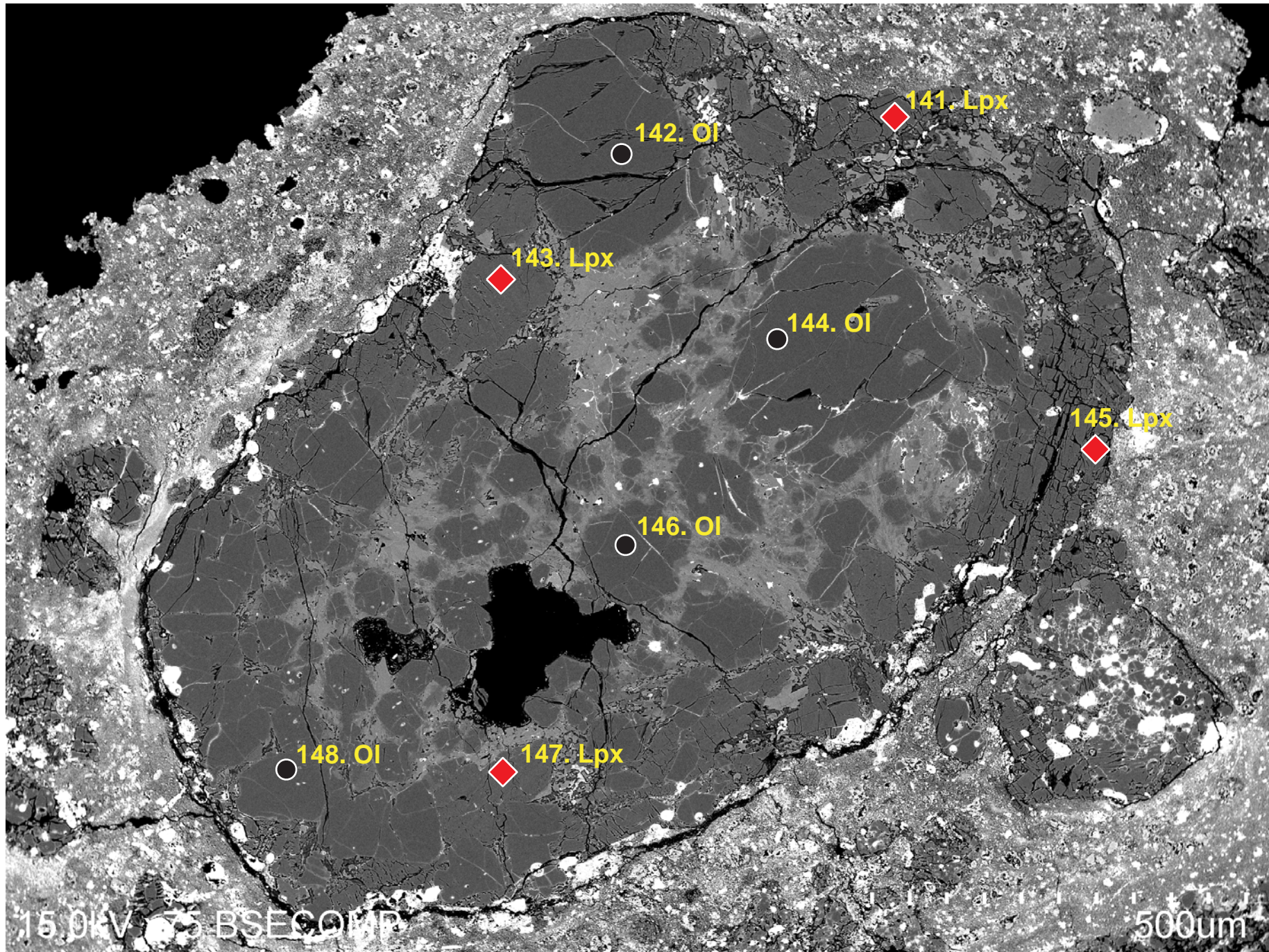
#1



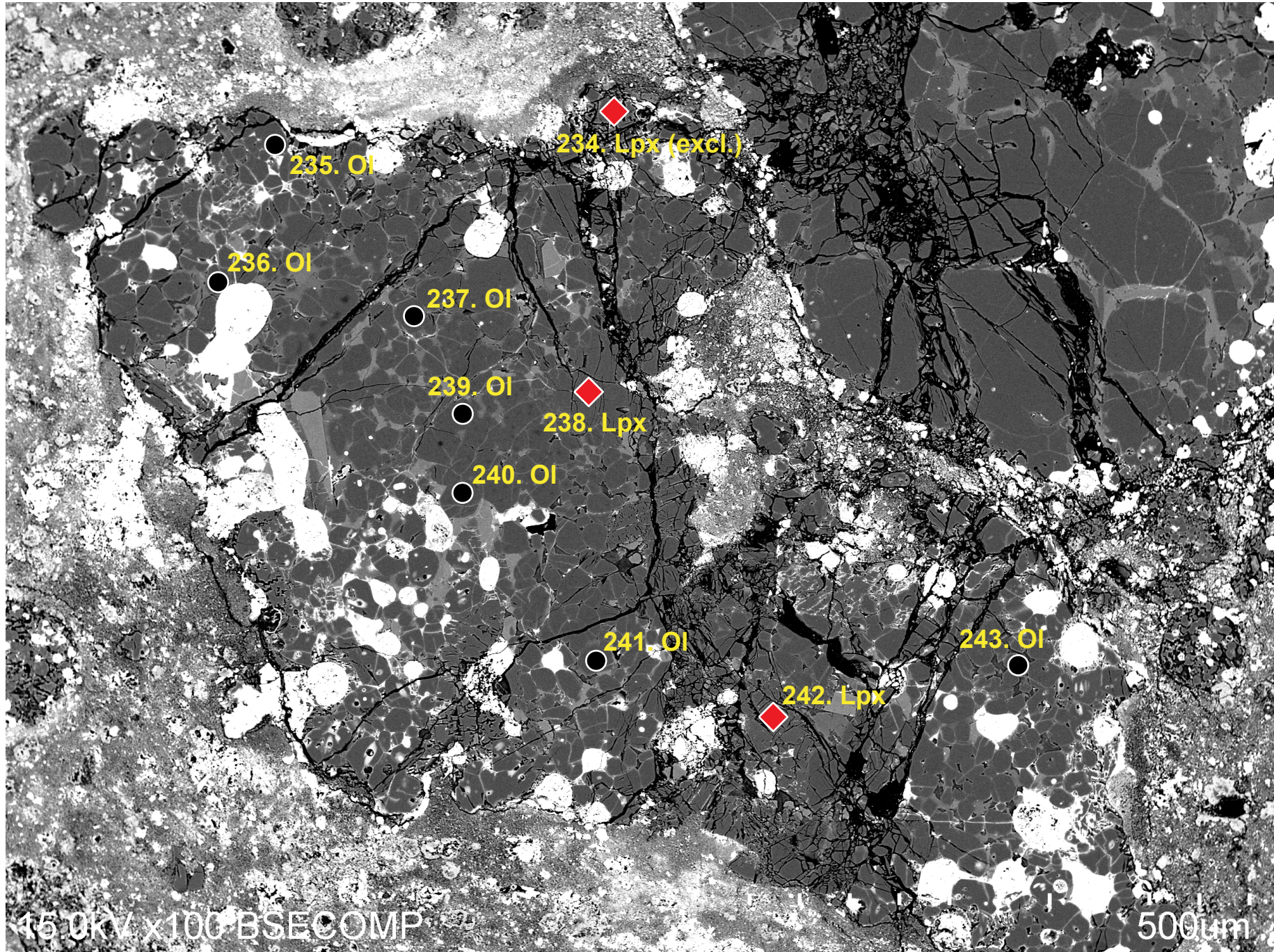
#2



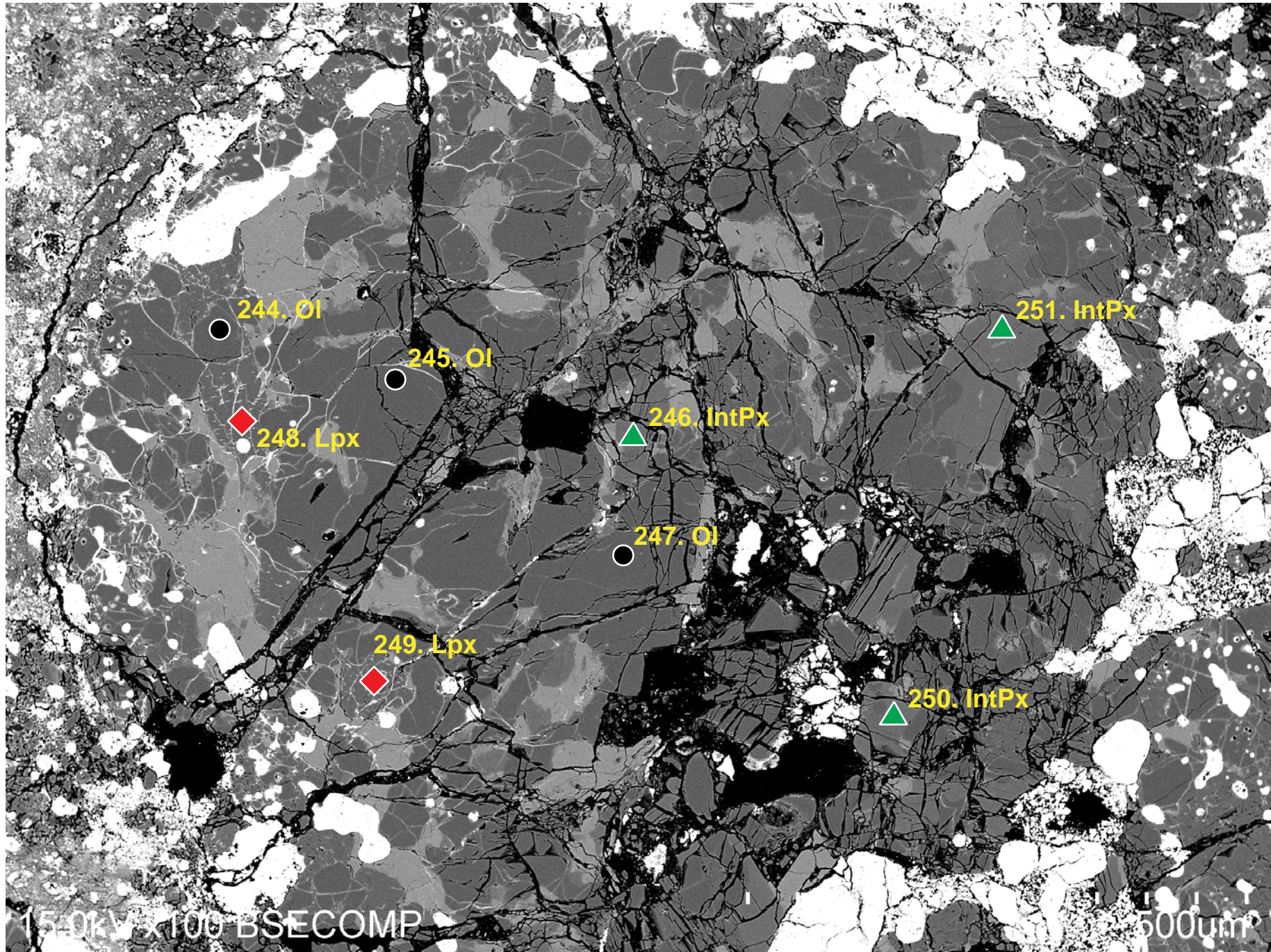
#3



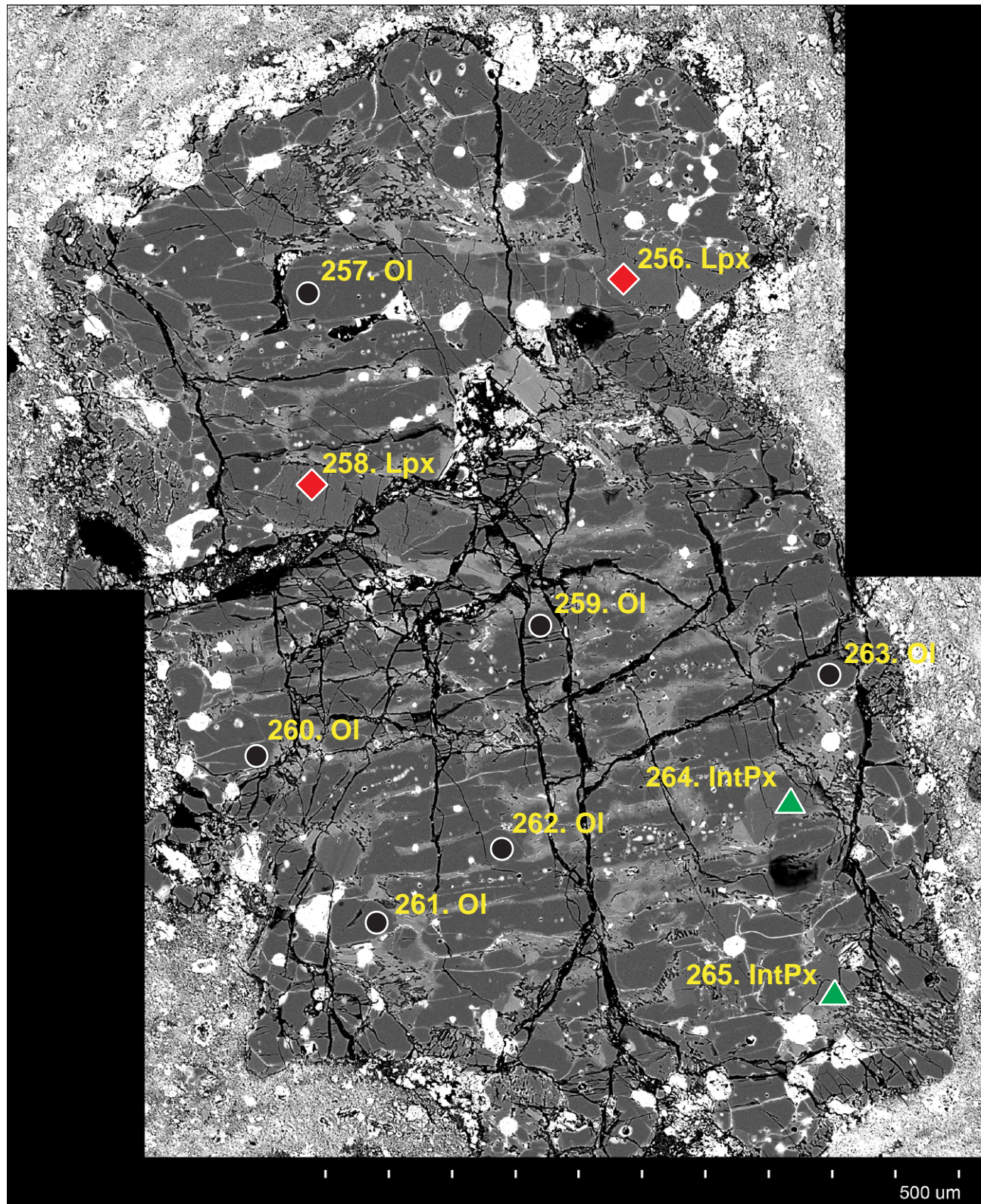
#4



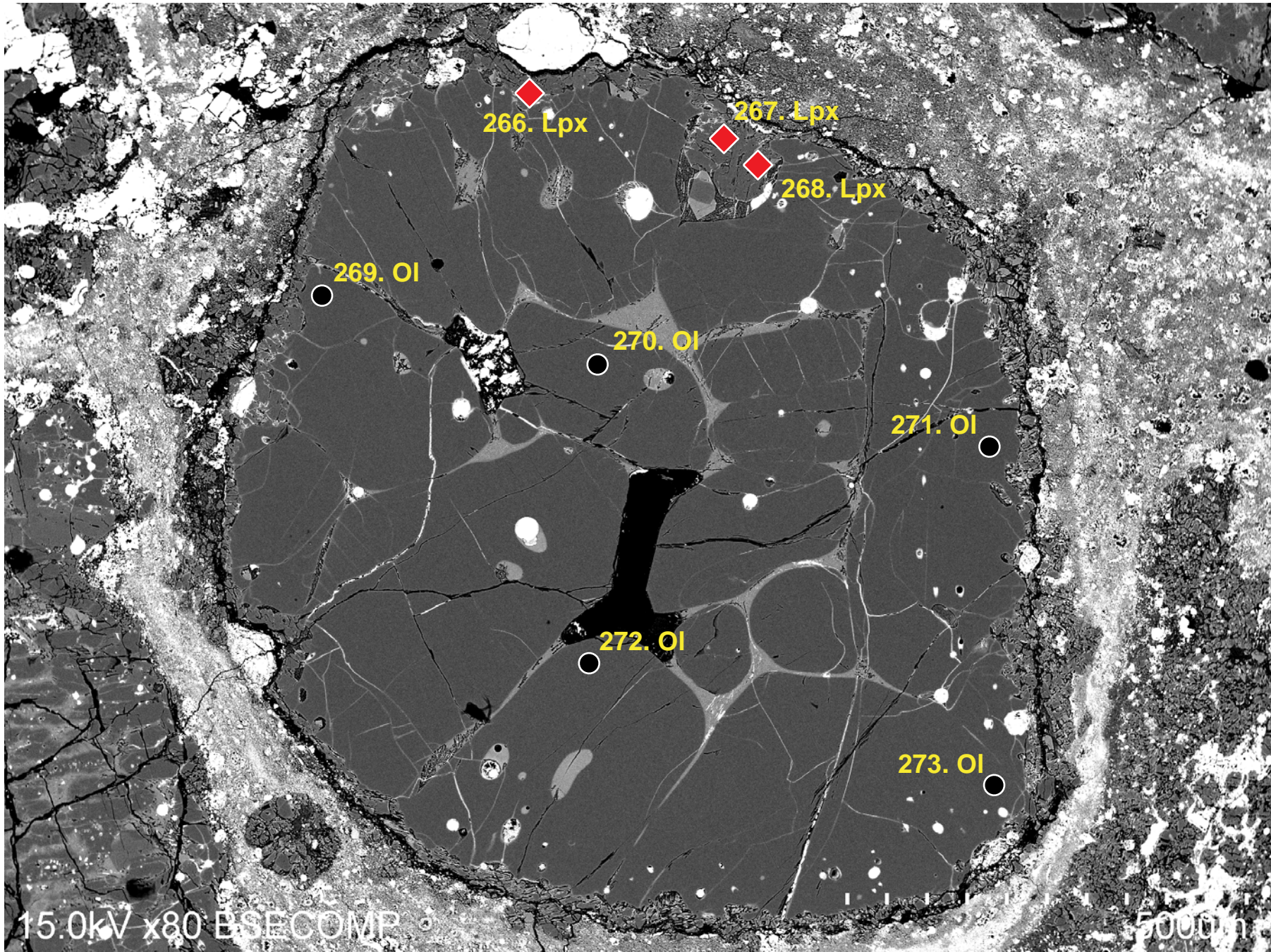
#5



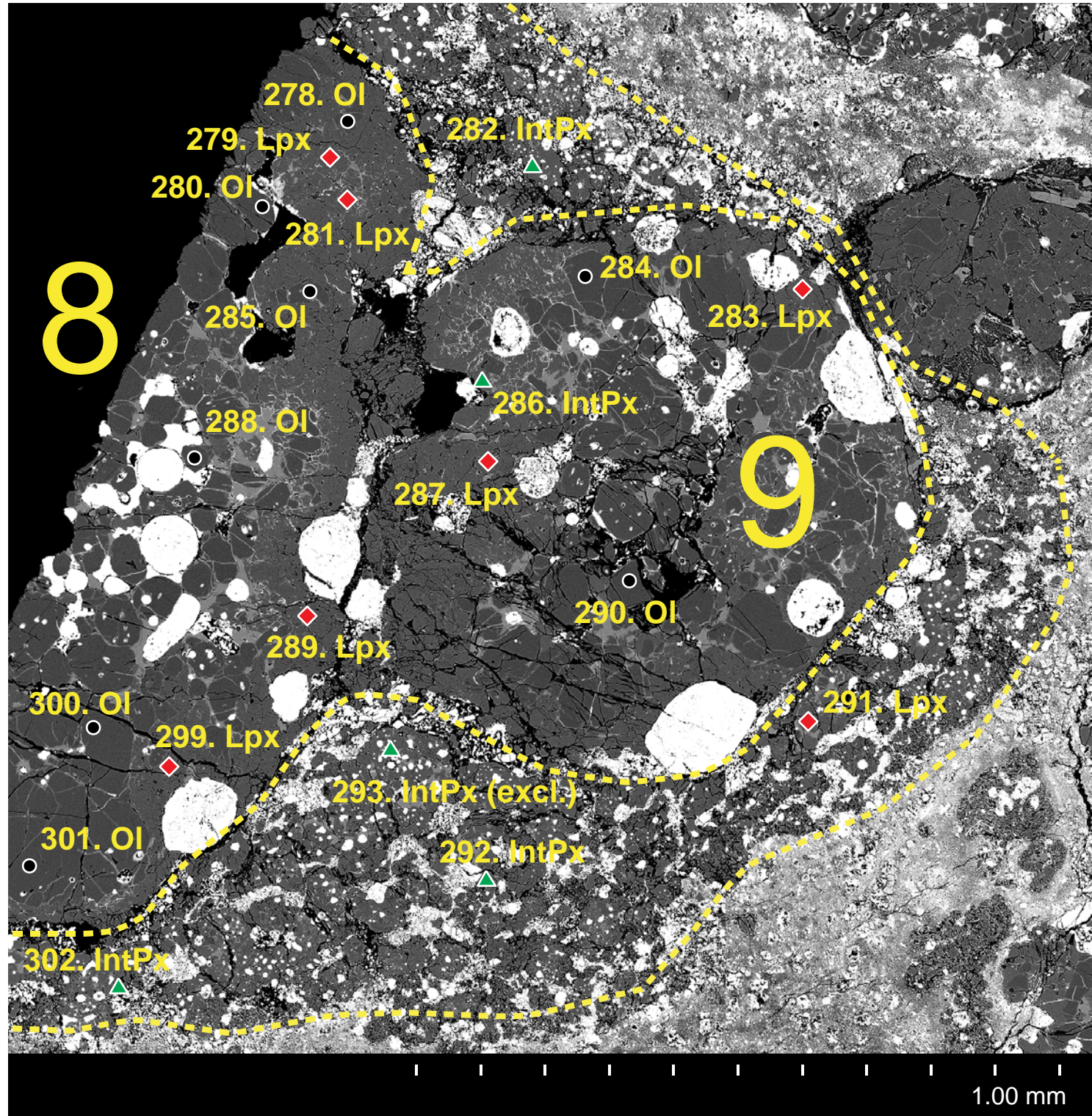
#6



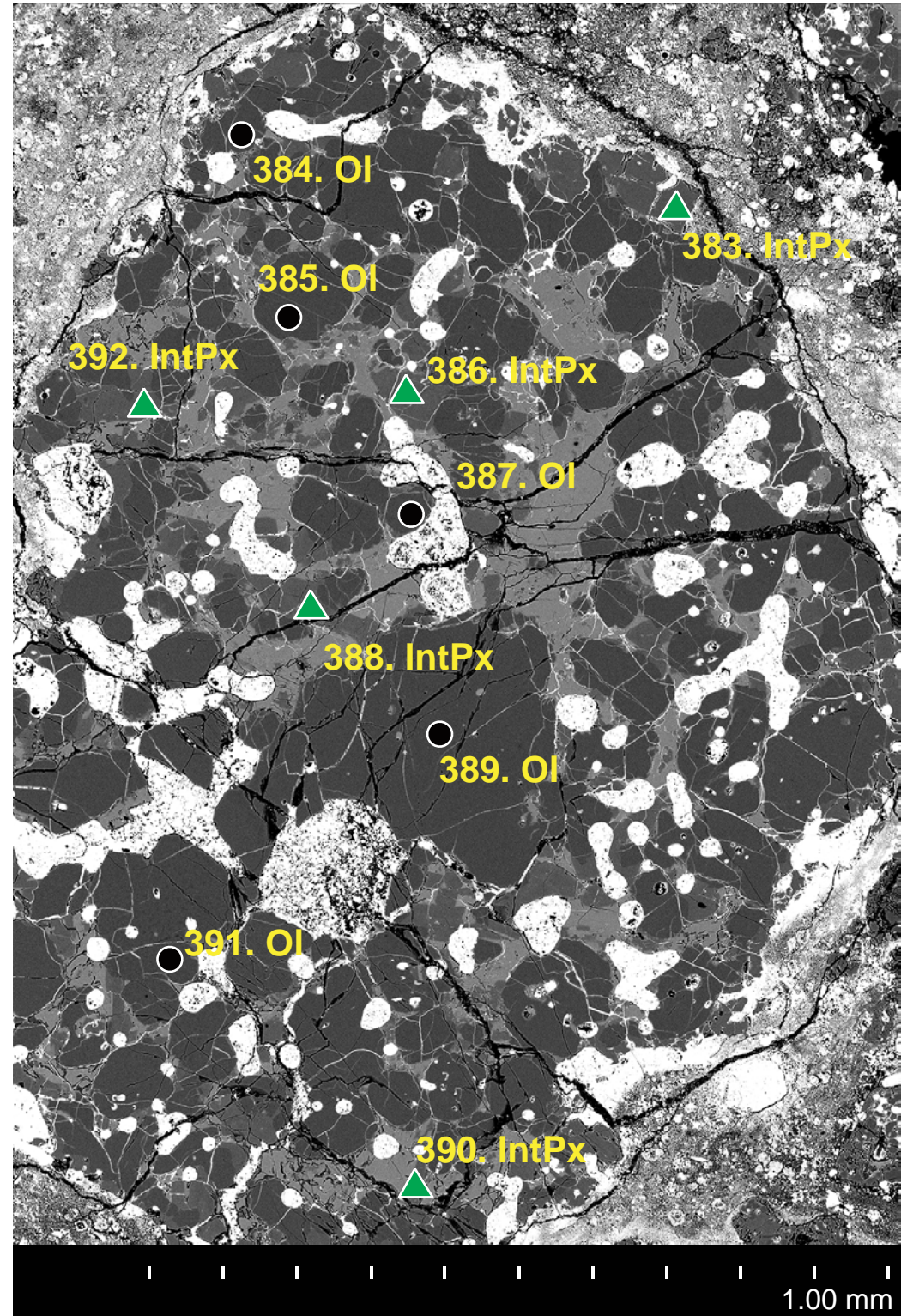
#7



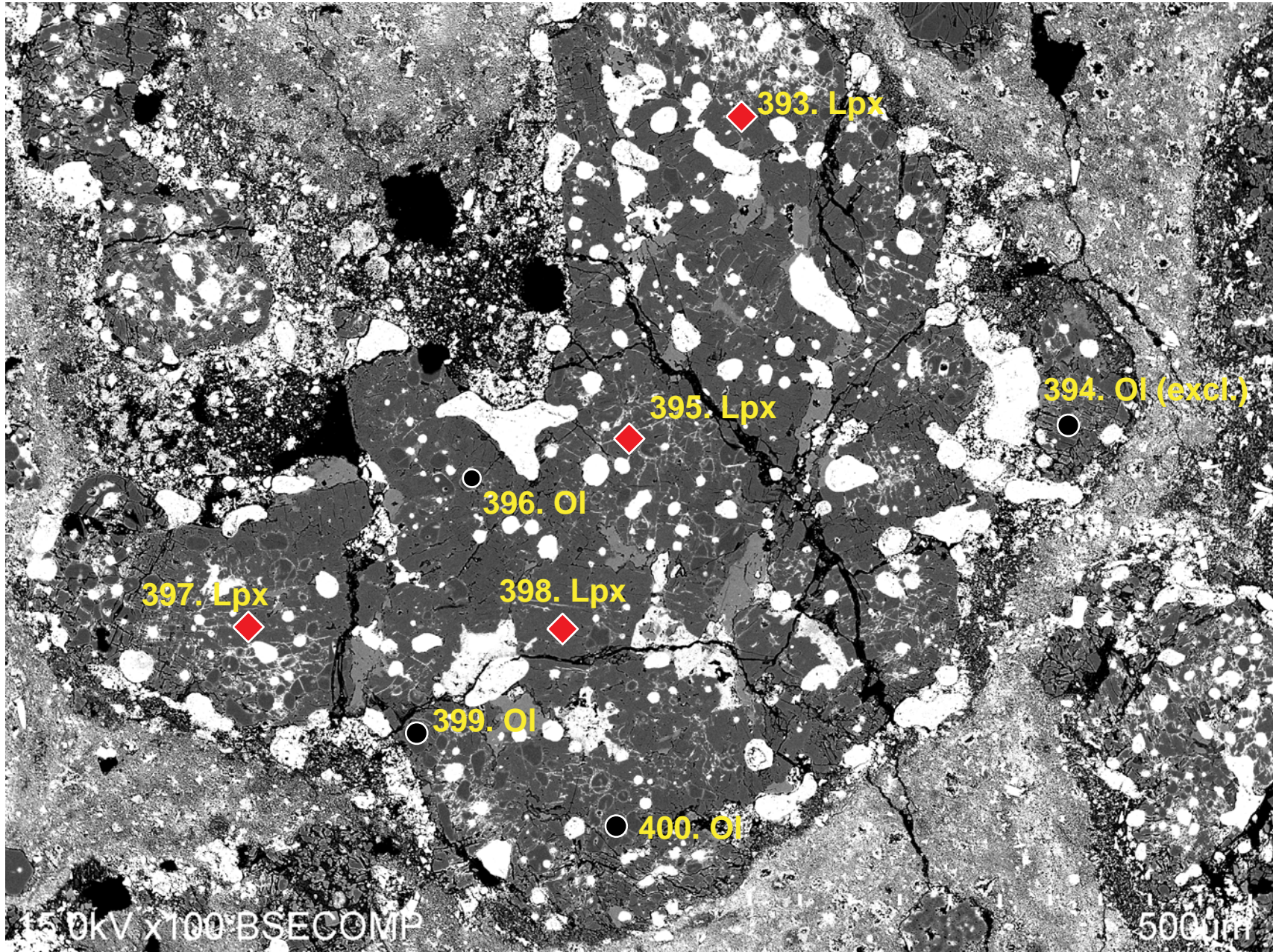
#8, 9,
(8+9)



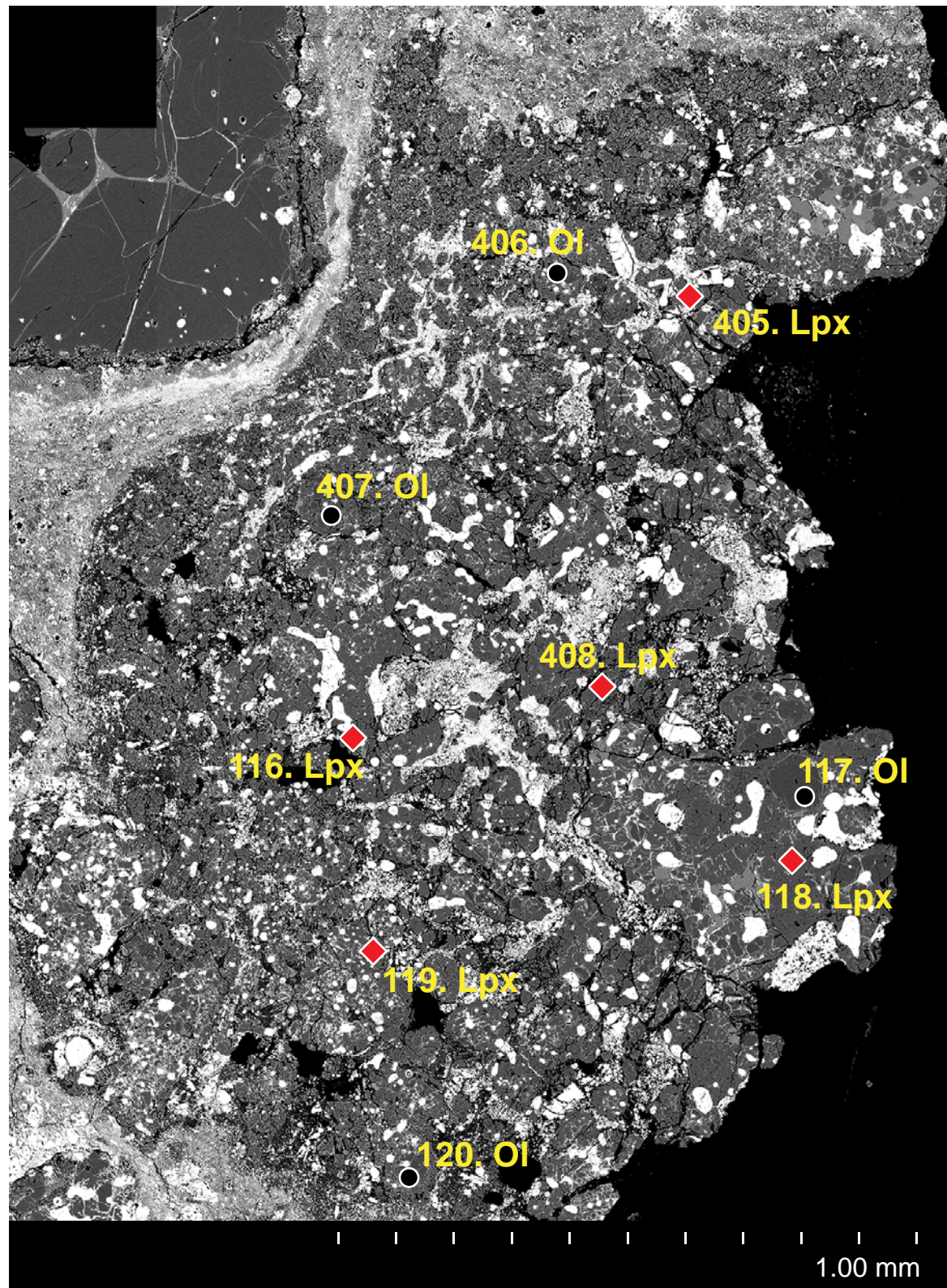
#10



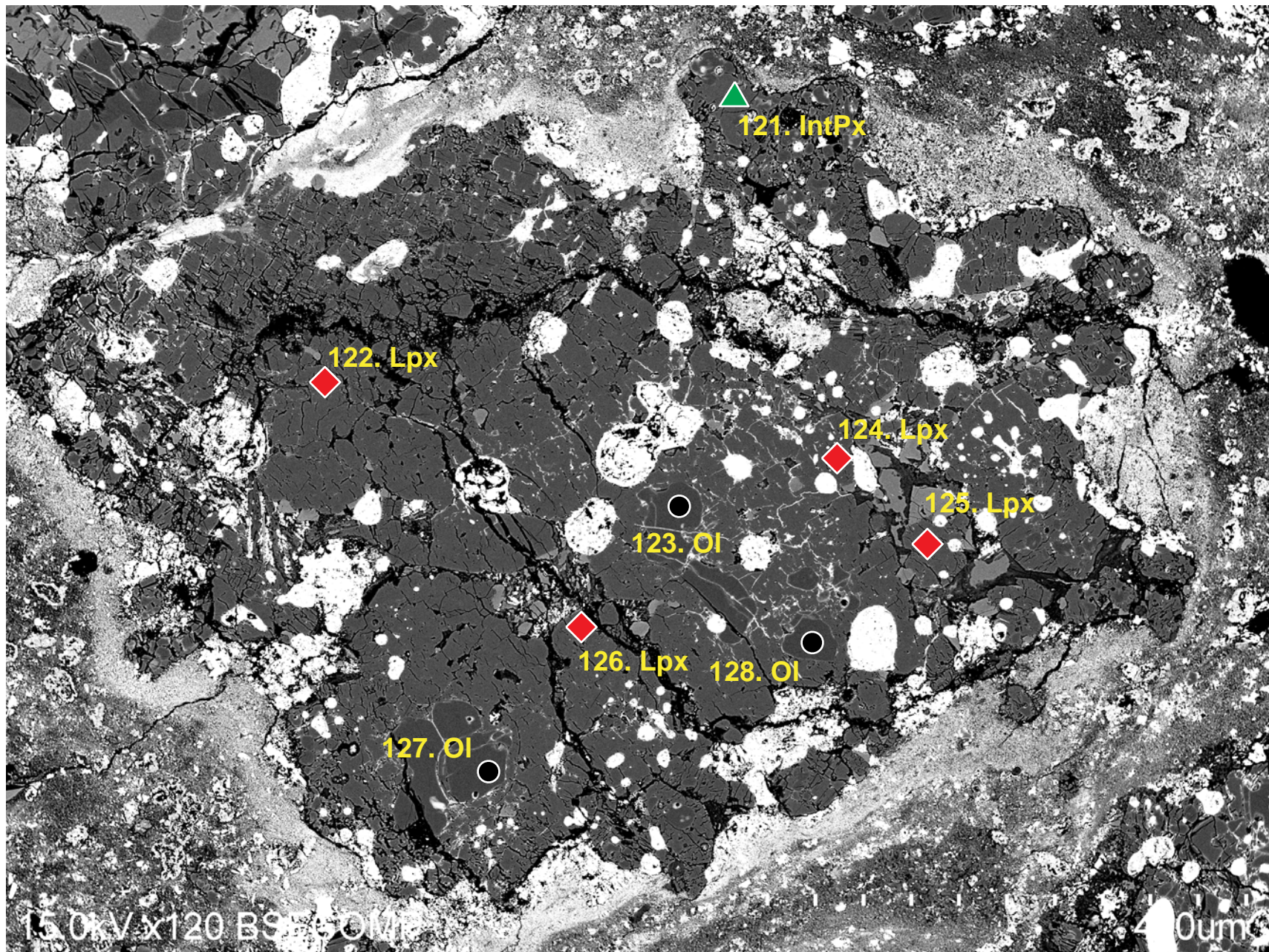
#11



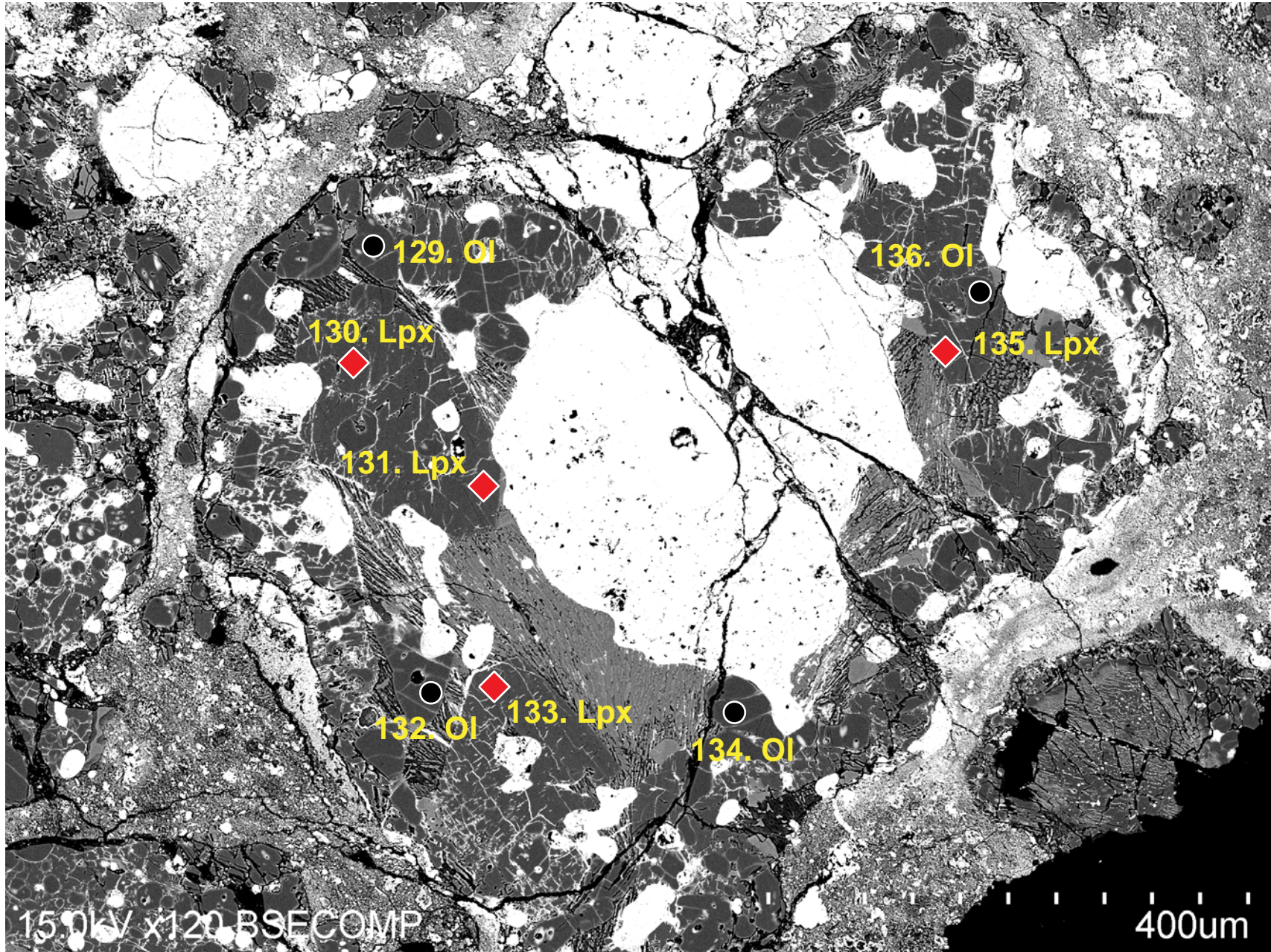
#12



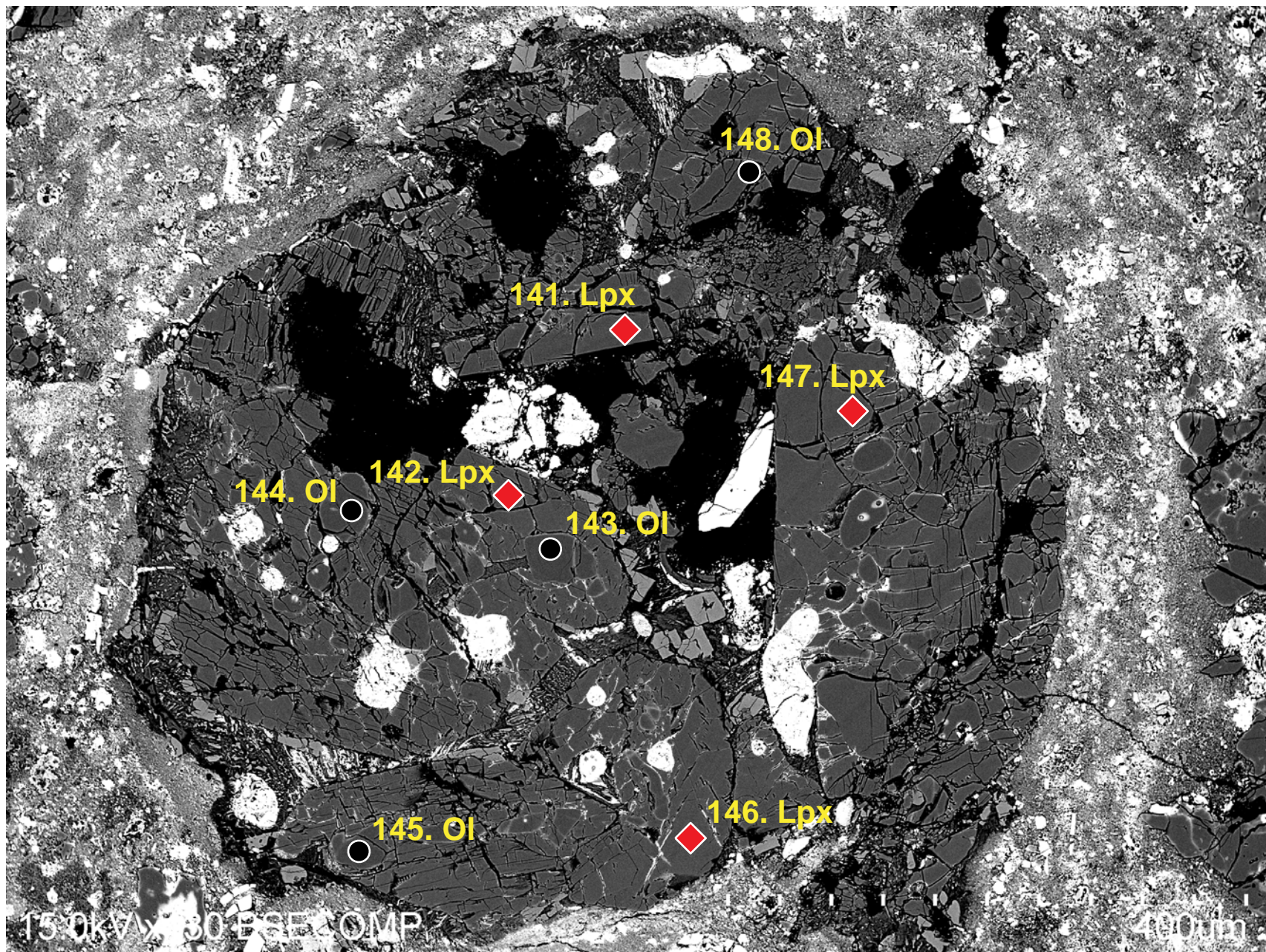
#13



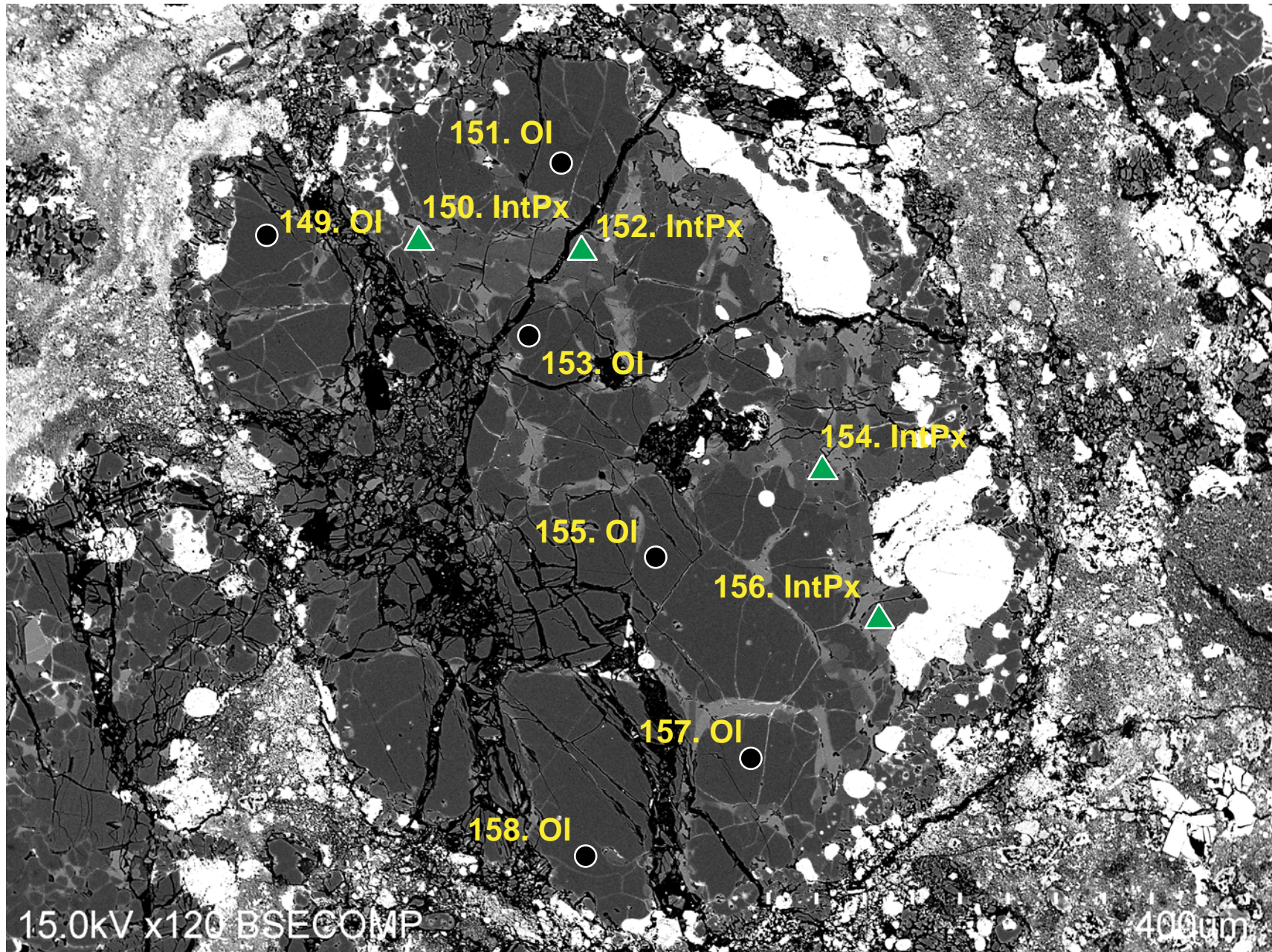
#14



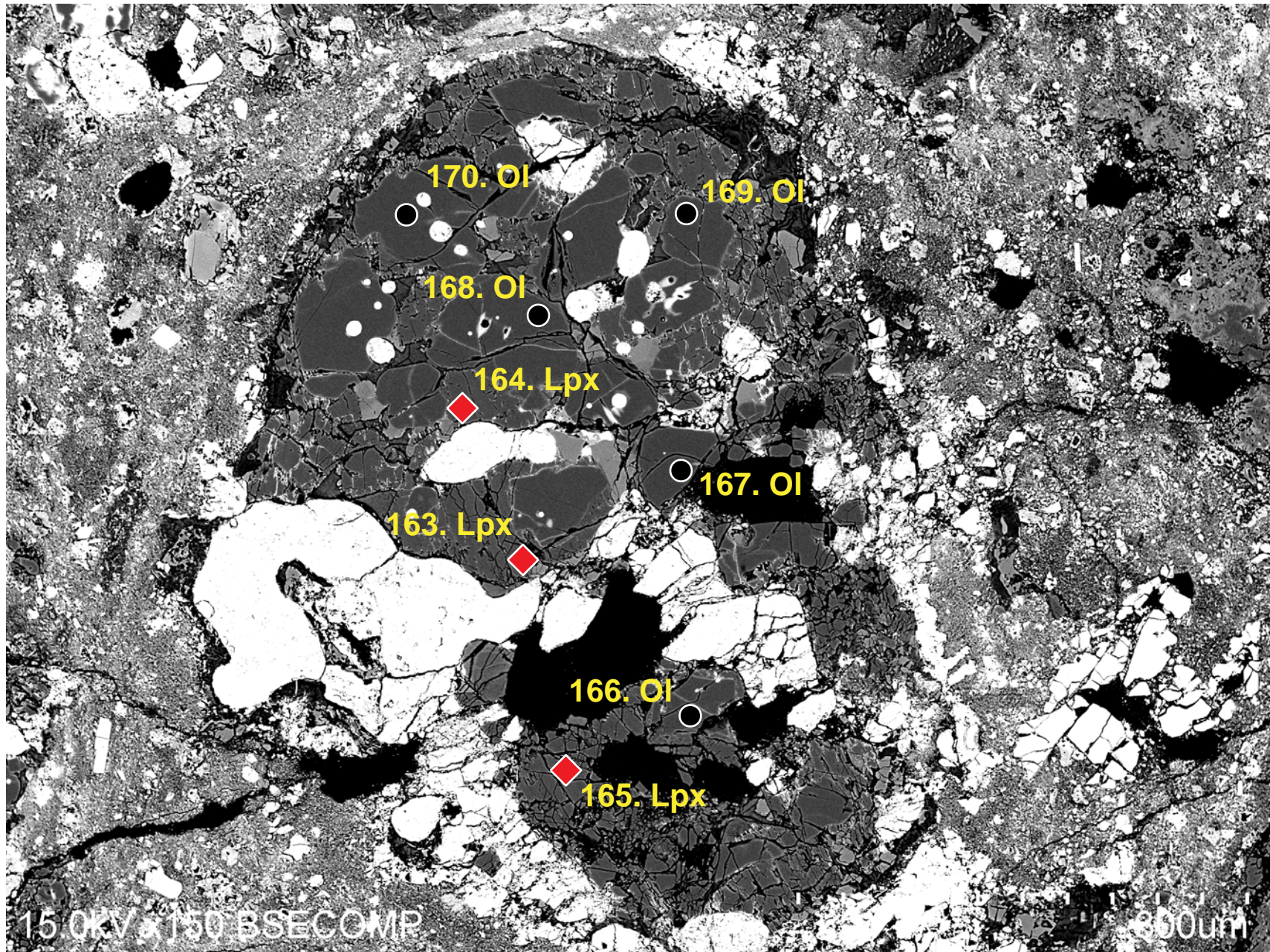
#15



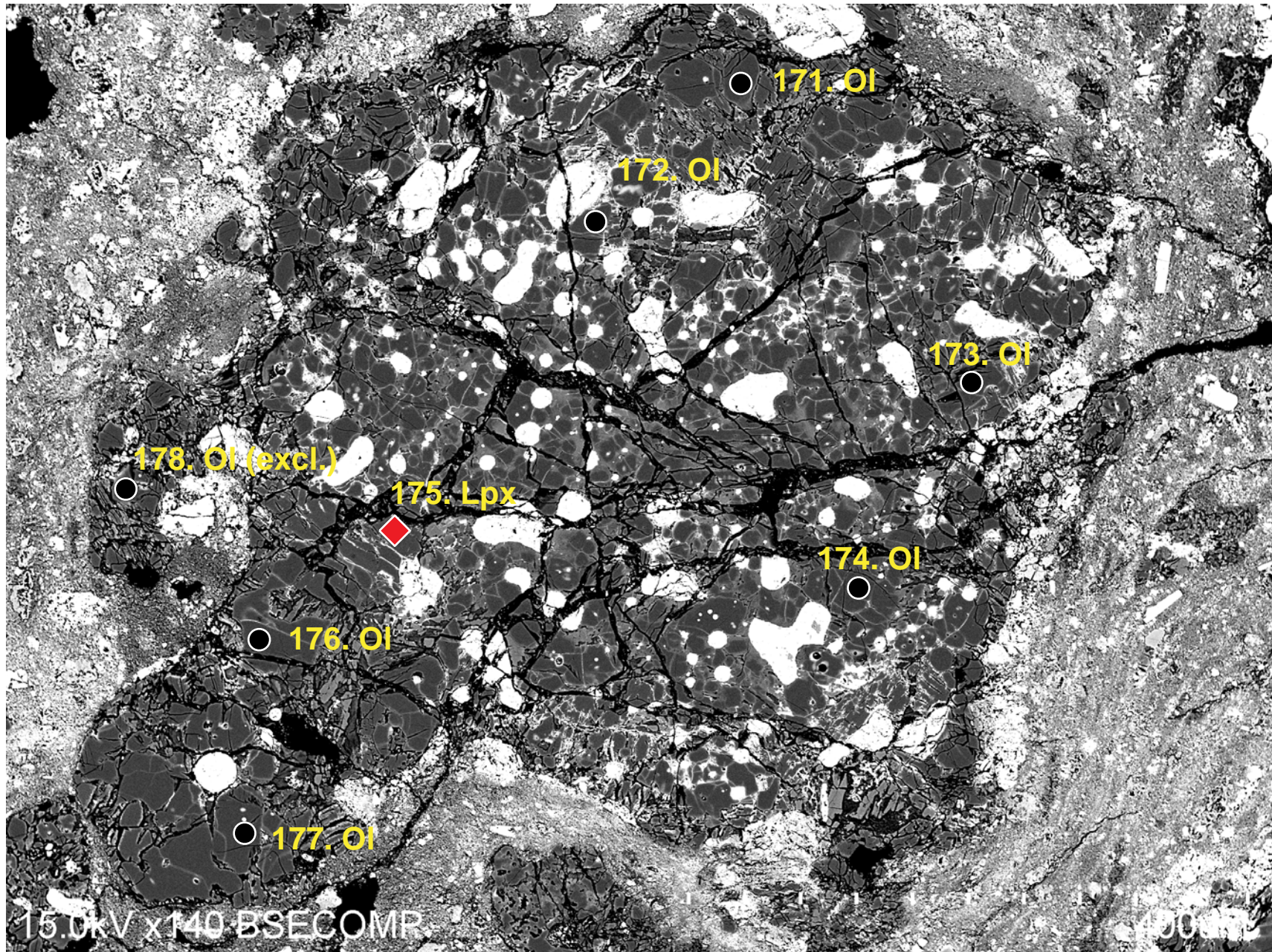
#16



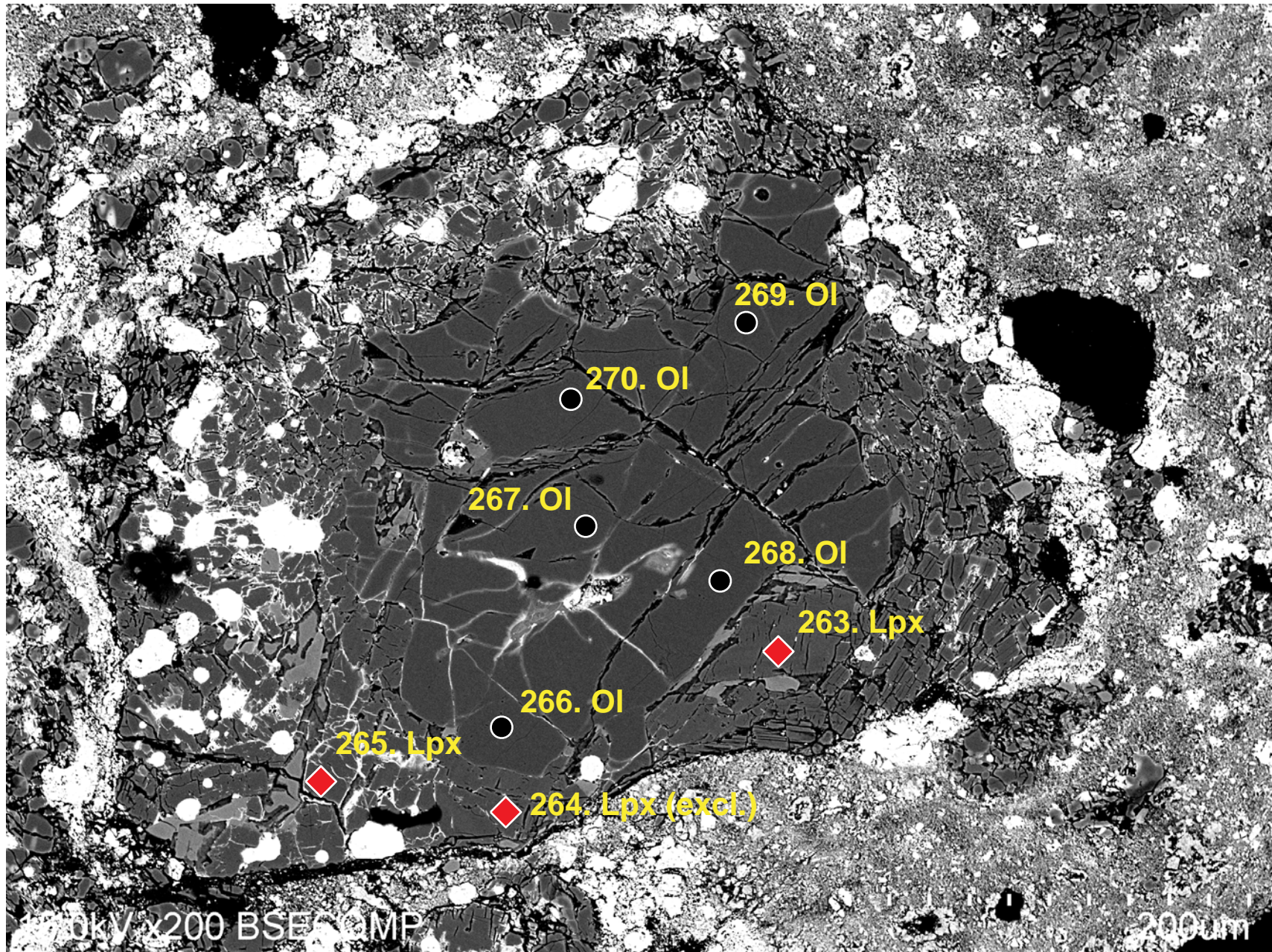
#17



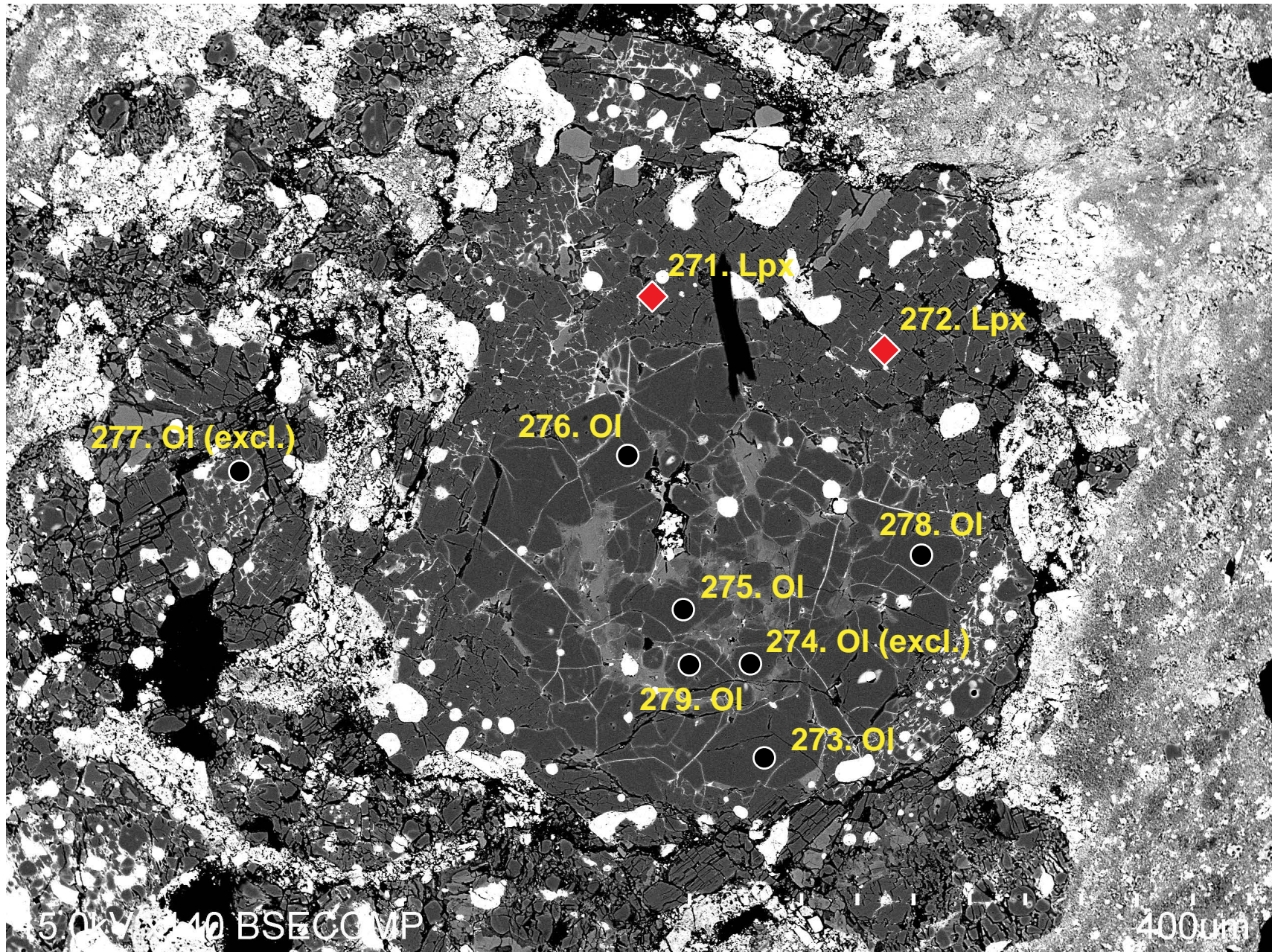
#18



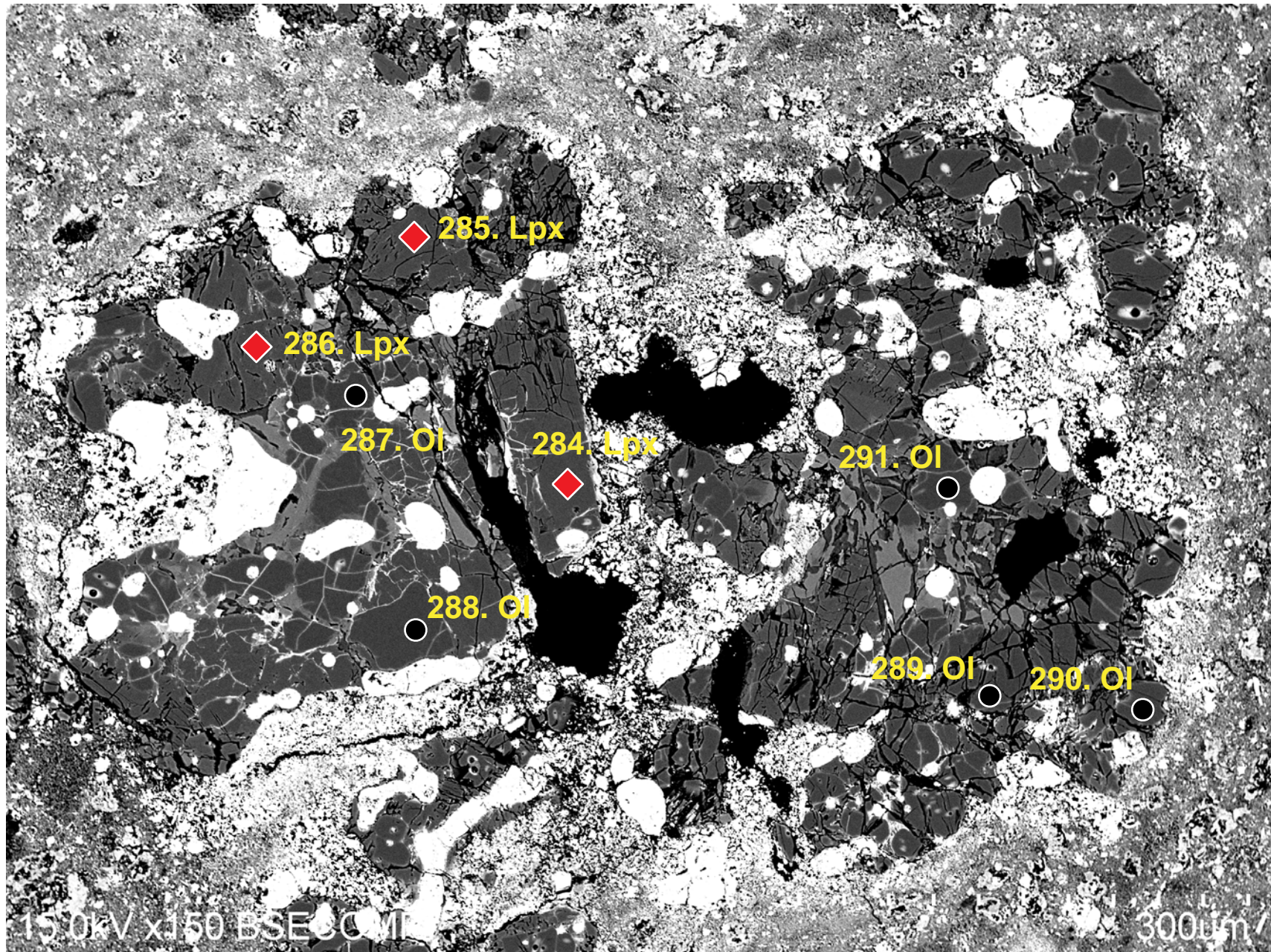
#19



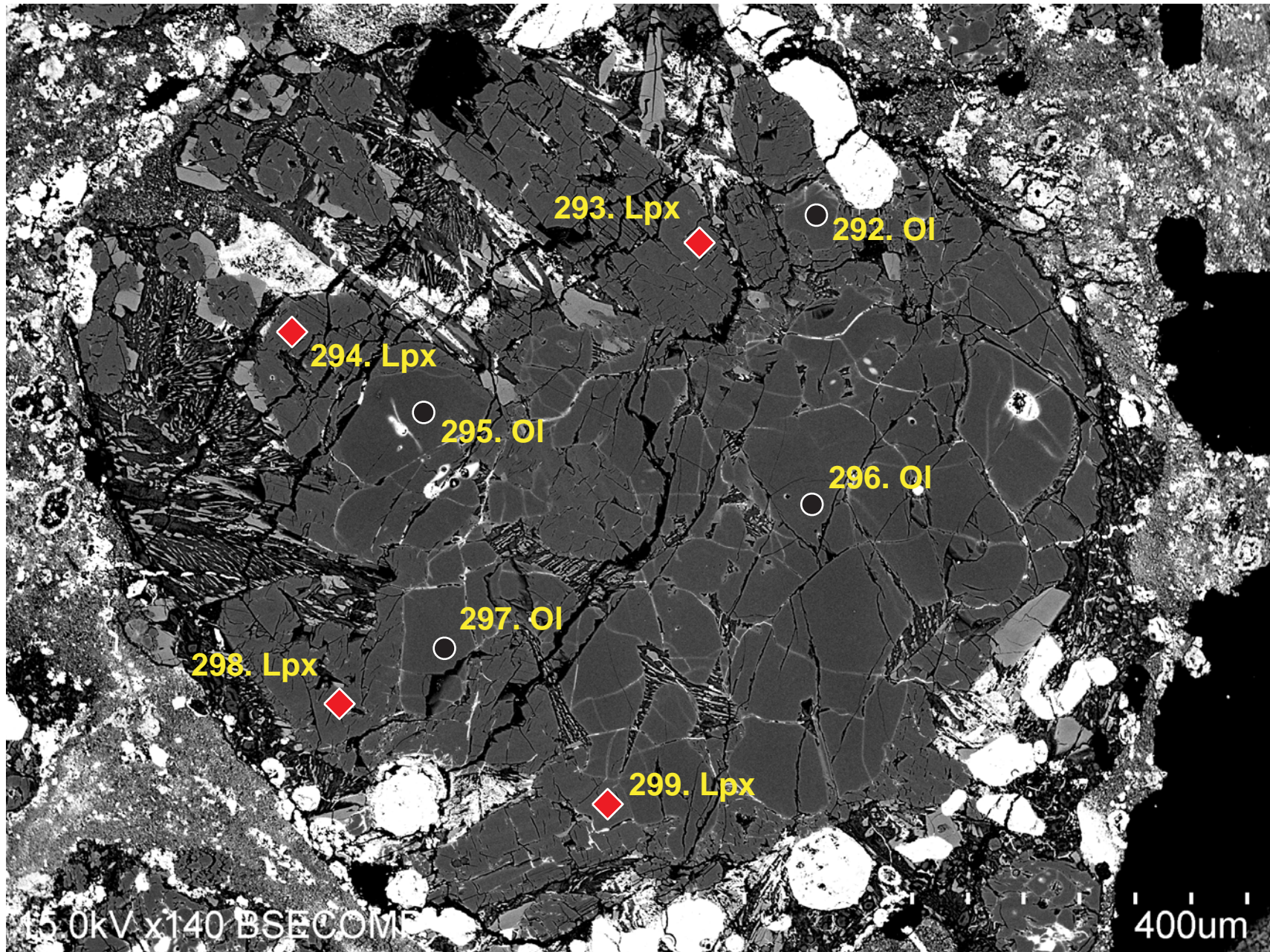
#20



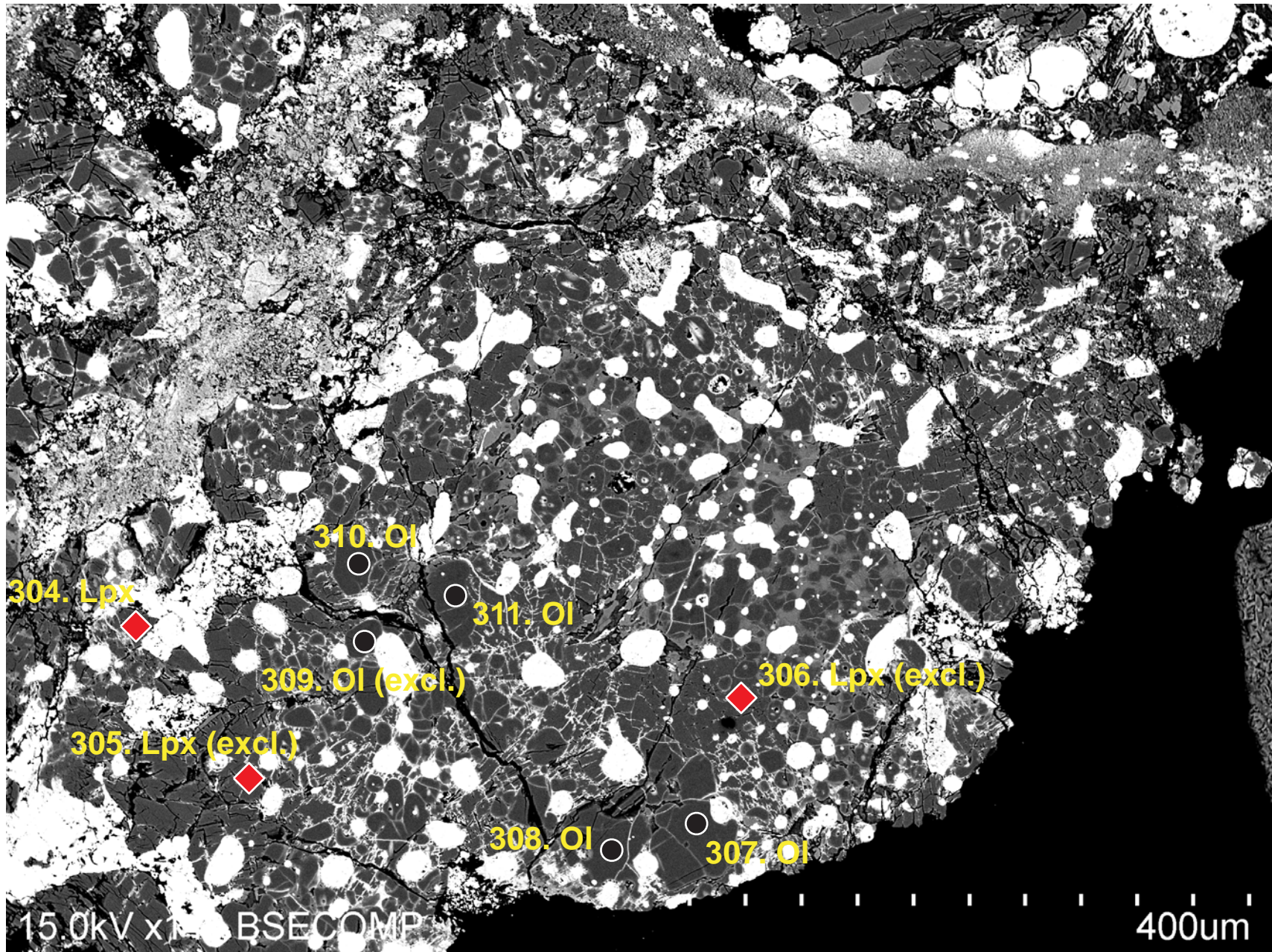
#21



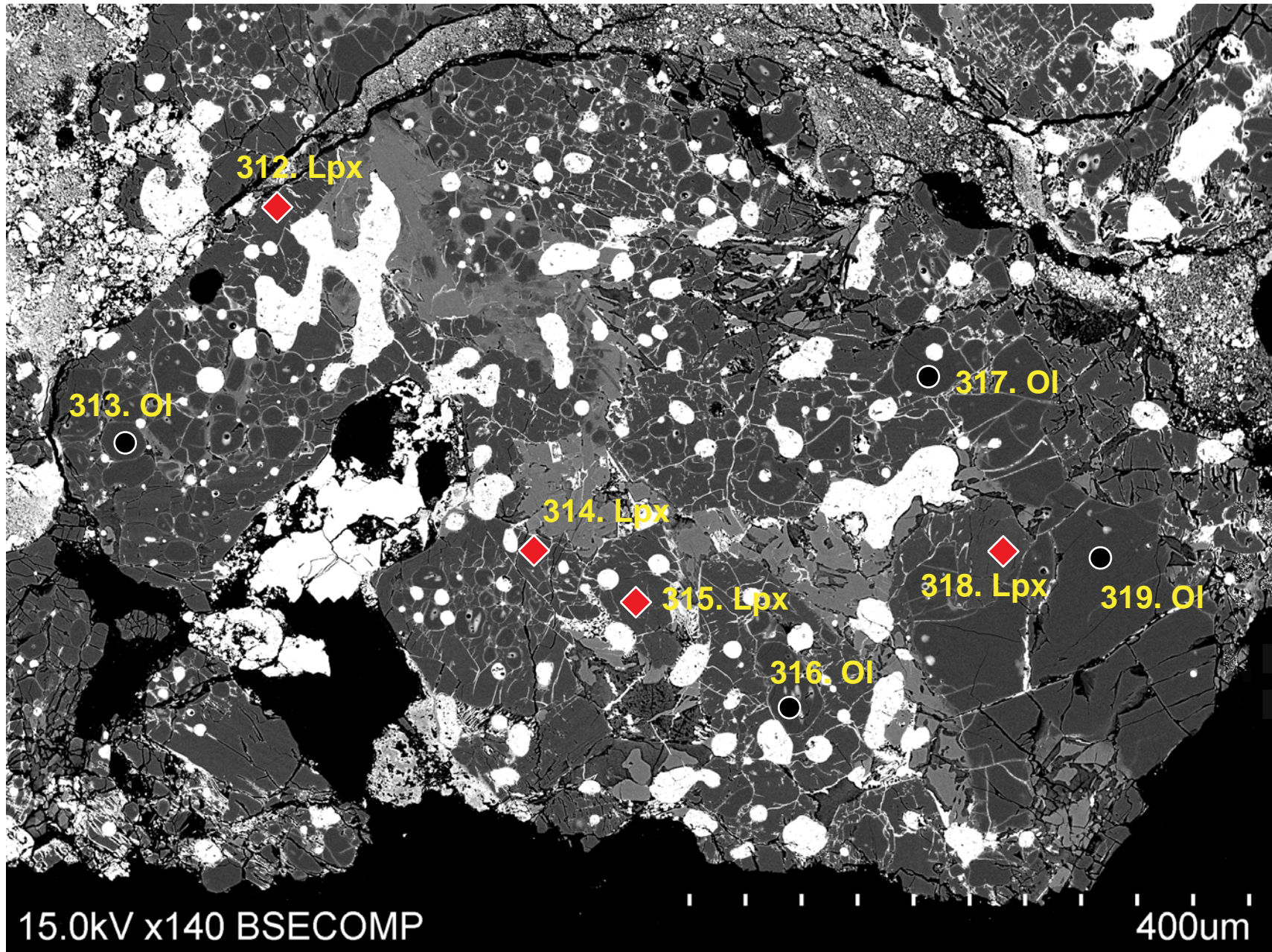
#22



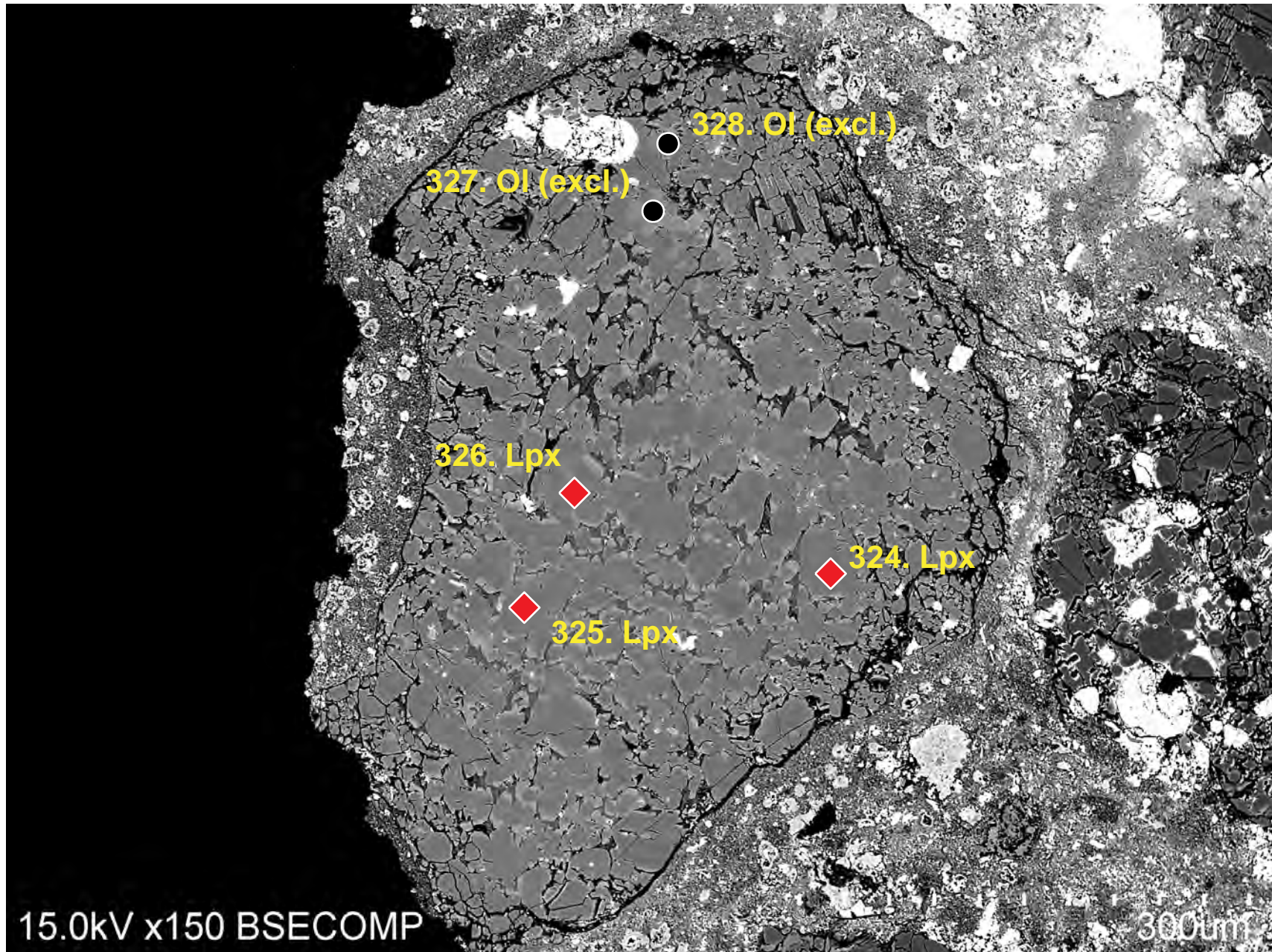
#23



#24



#25



#26

