

Hertwig et al. 2017: Formation of chondrules in a moderately high dust enriched disk:
evidence from oxygen isotopes of chondrules from the Kaba CV3 chondrite

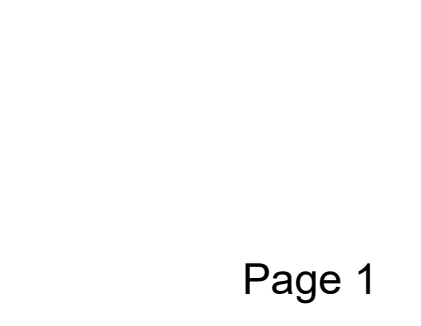
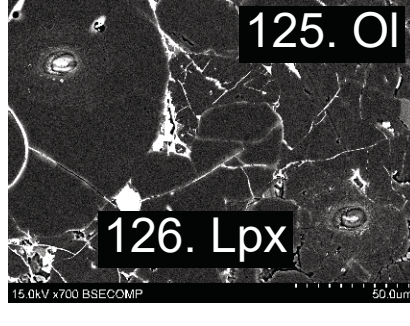
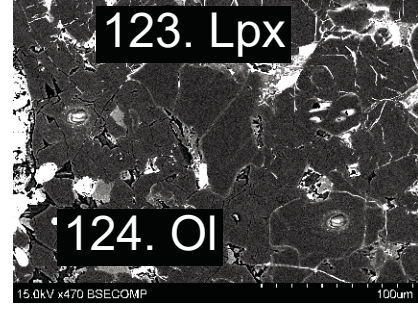
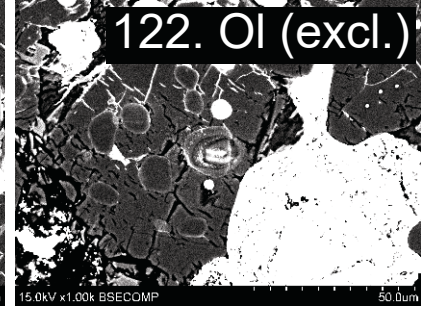
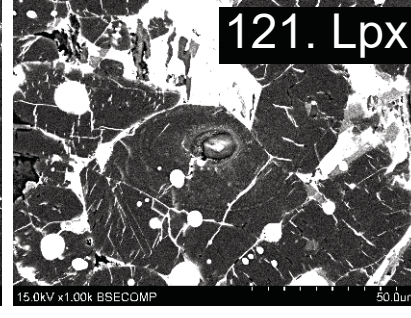
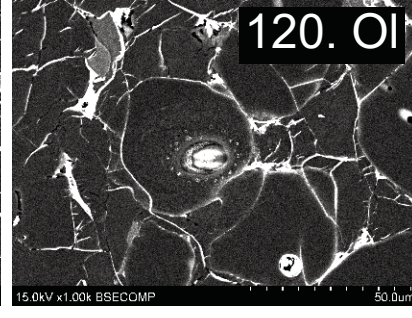
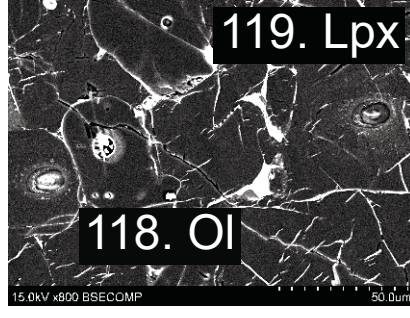
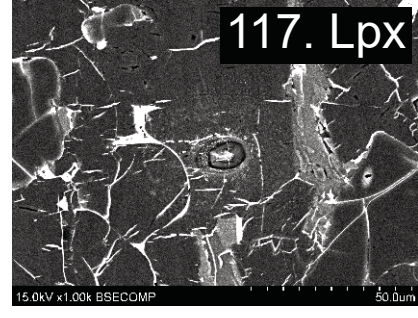
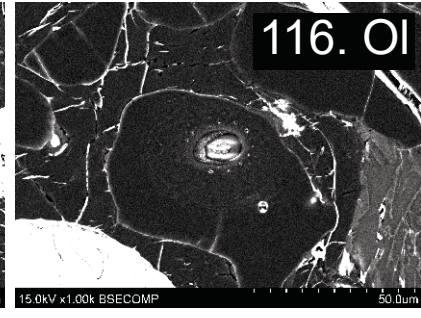
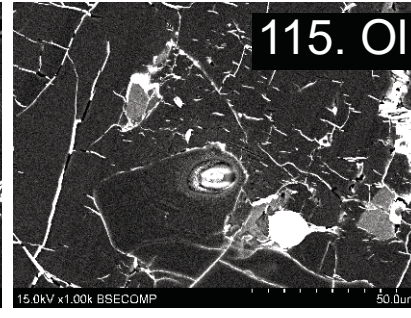
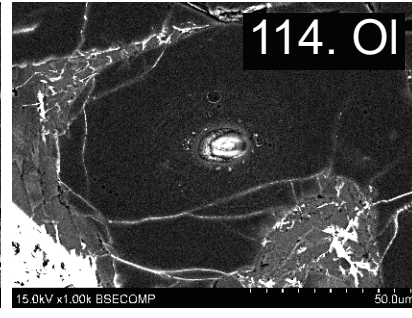
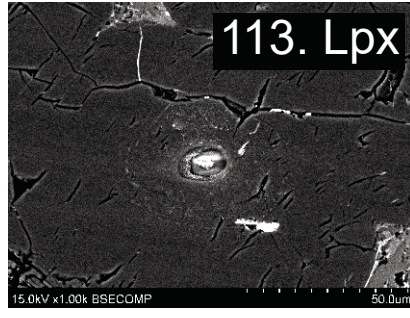
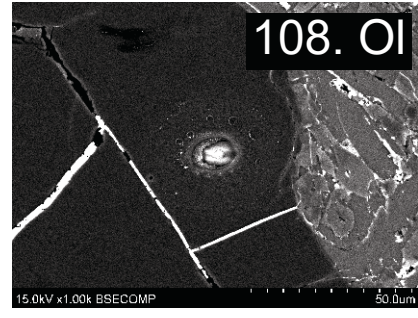
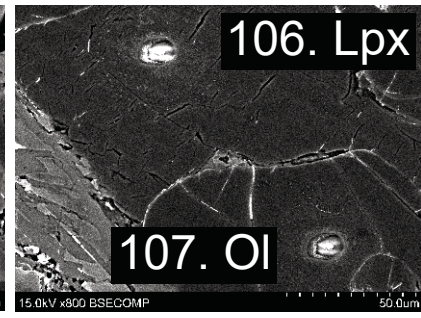
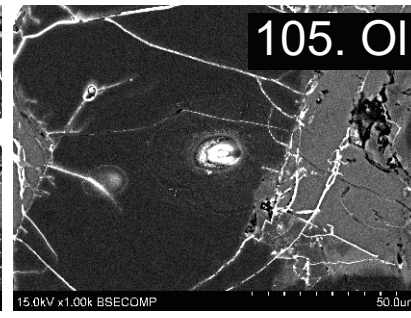
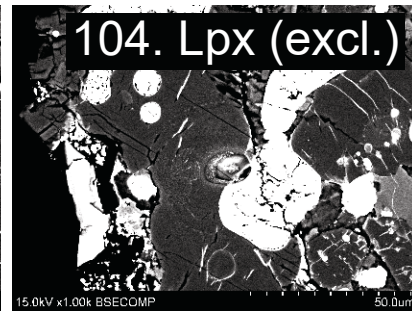
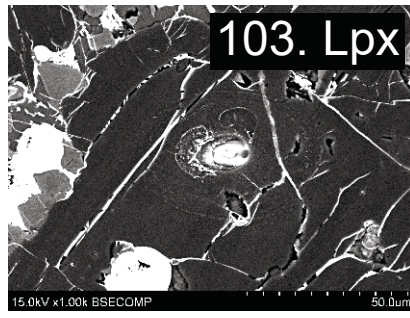
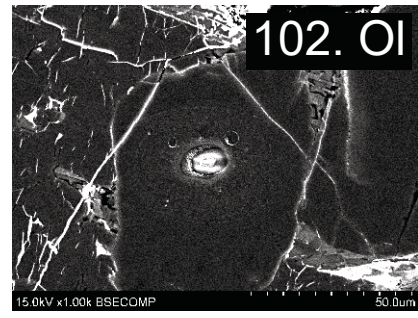
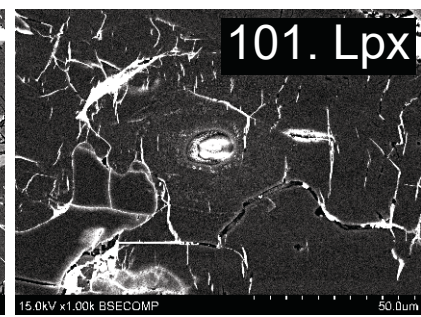
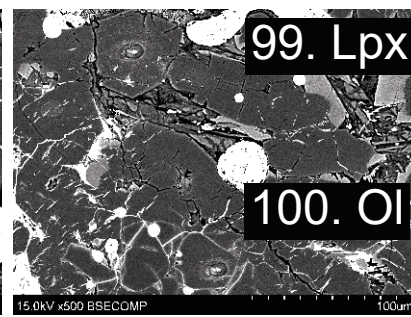
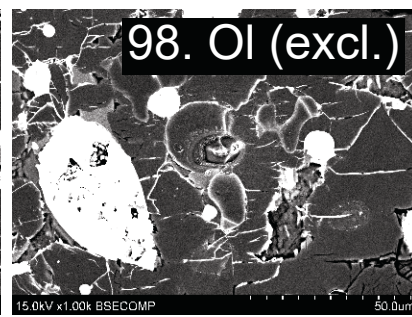
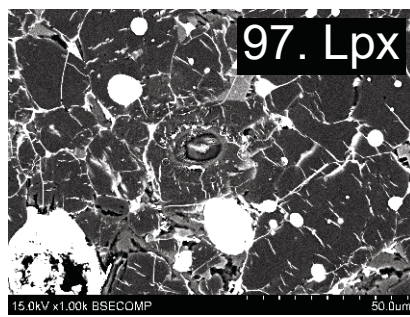
EA2: BSE images of SIMS pits

#No.: Chondrule number

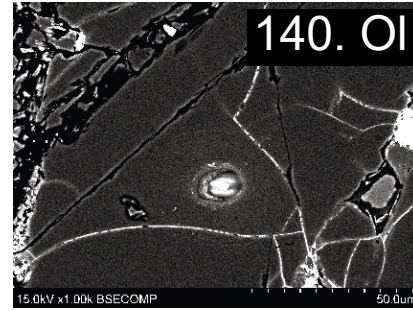
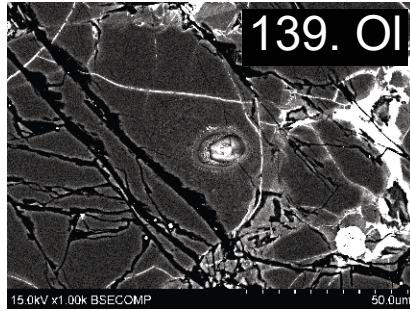
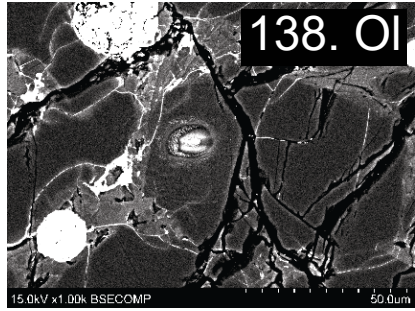
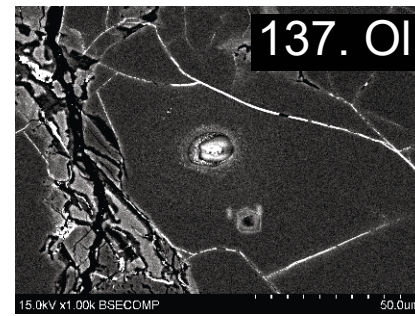
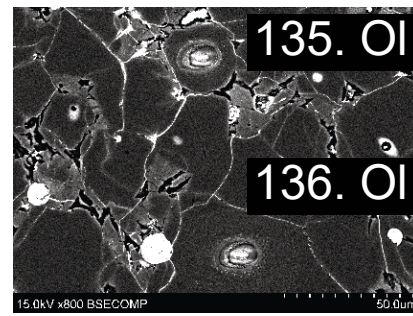
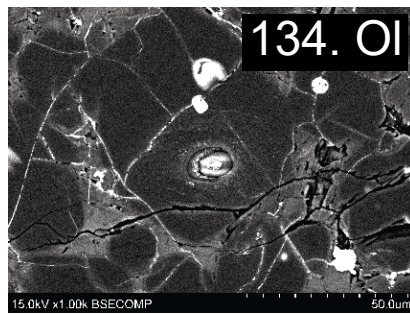
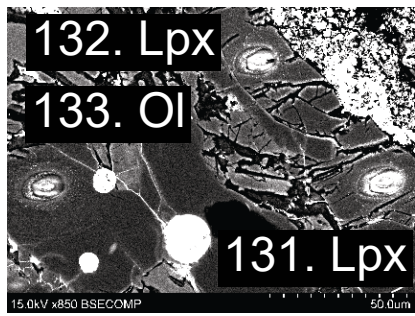
excl.: Analysis excluded because of pit imperfections

Ol: Olivine; Lpx: low-Ca pyroxene; IntPx: intermediate pyroxene

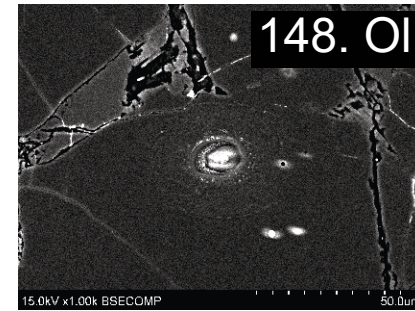
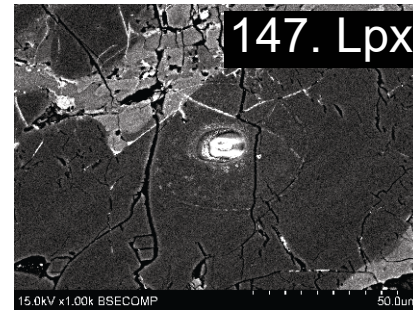
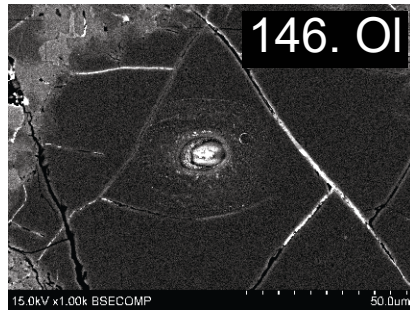
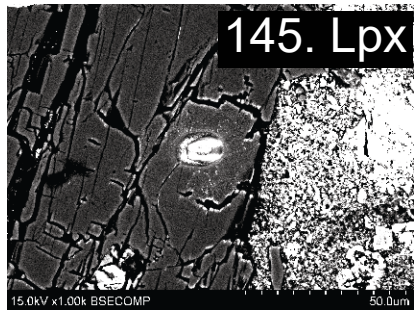
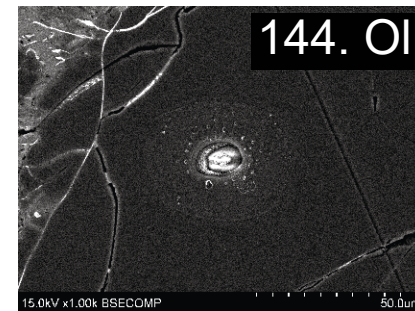
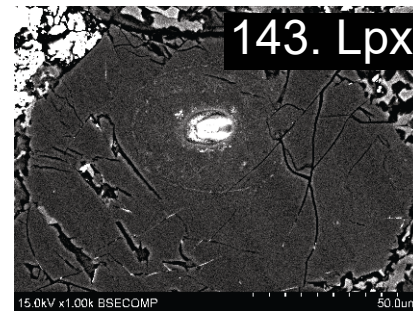
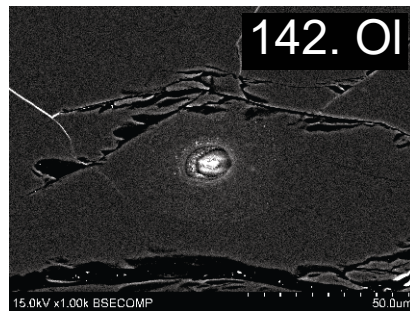
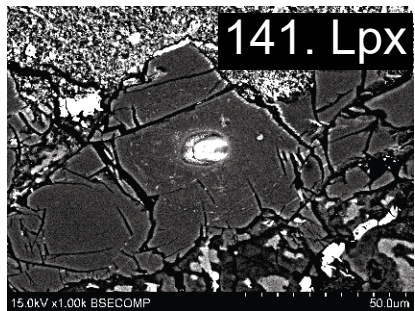
#1



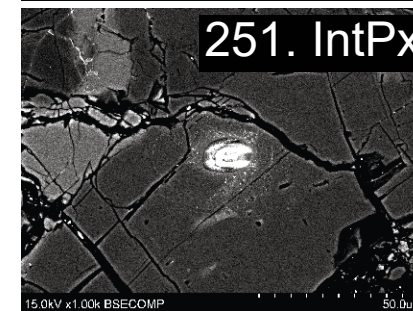
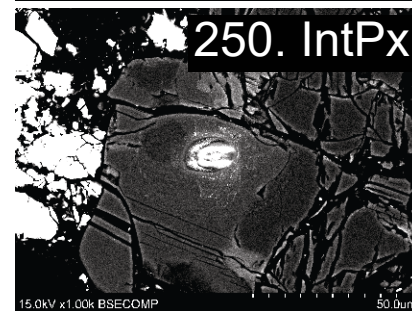
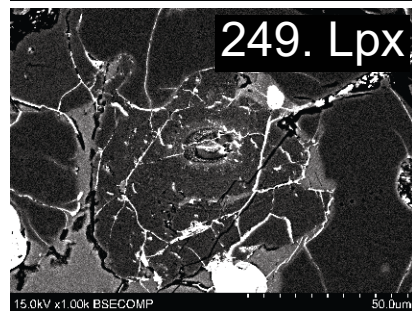
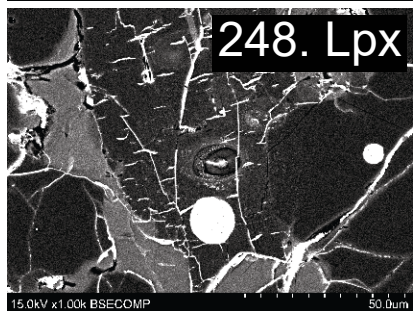
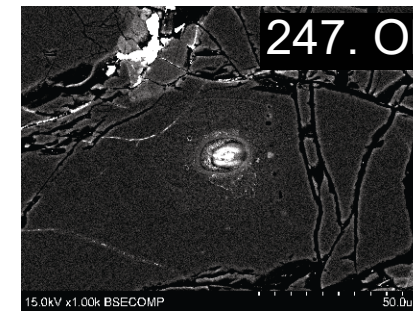
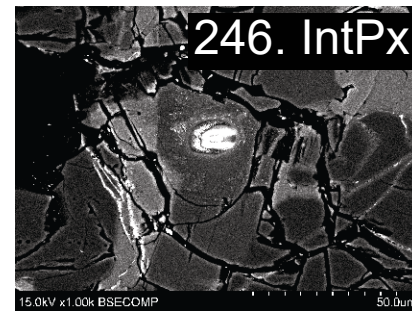
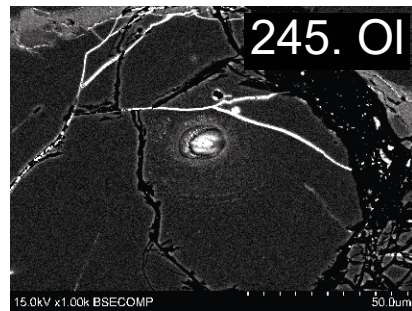
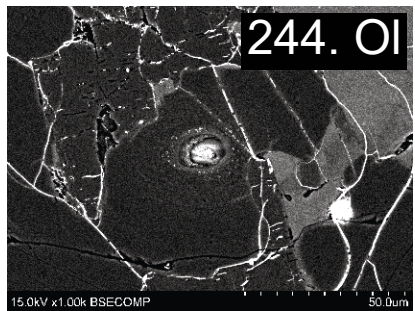
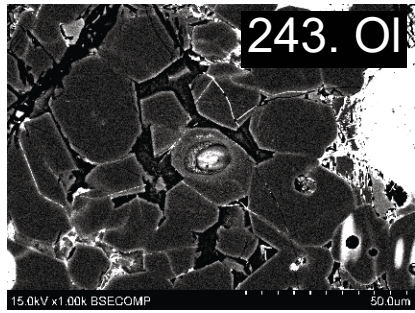
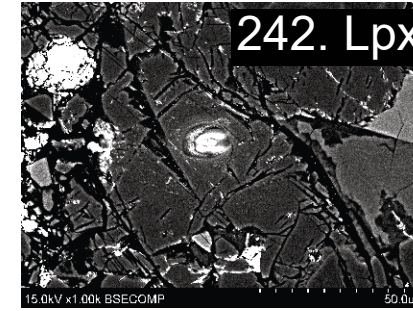
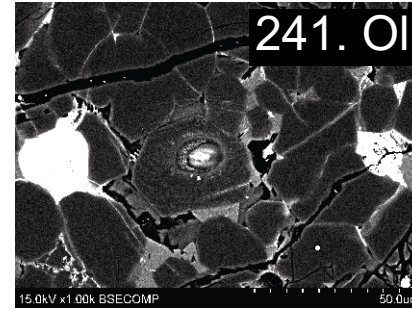
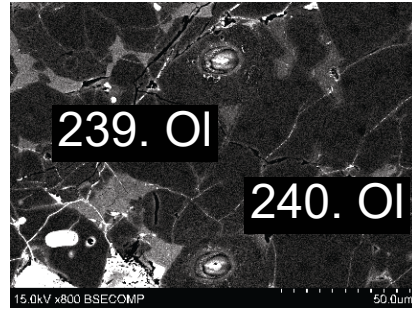
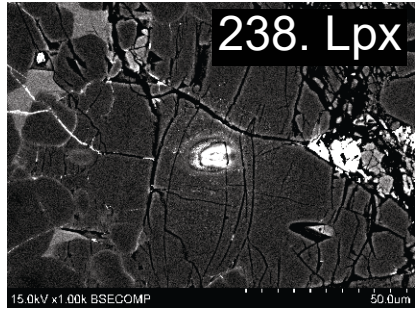
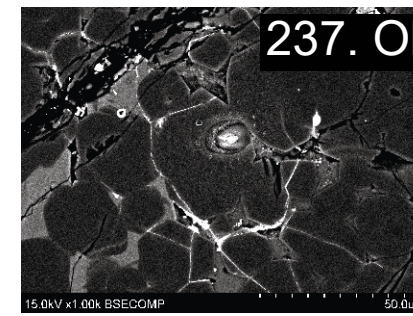
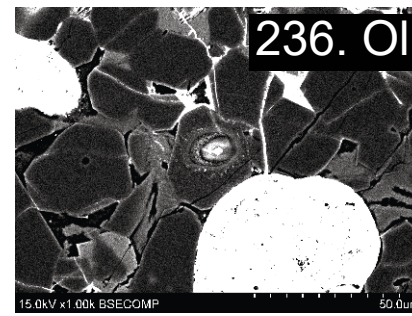
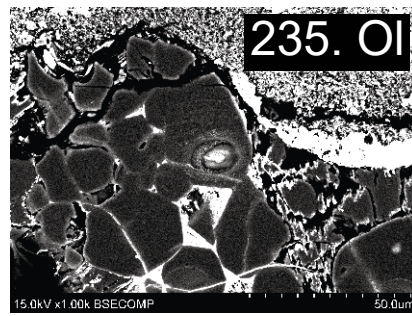
#2



#3

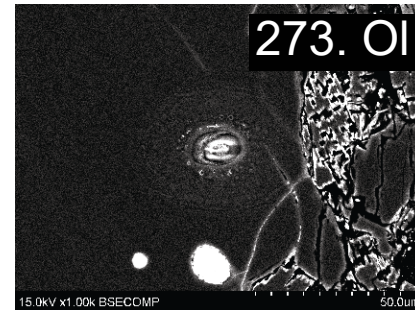
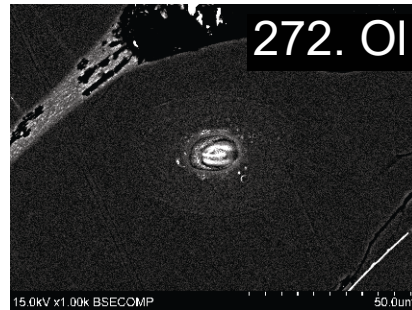
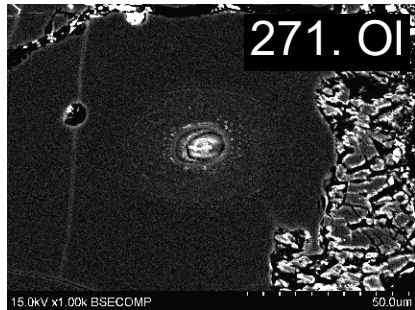
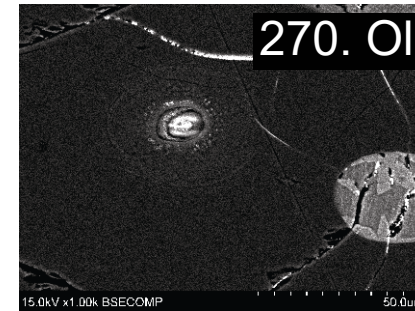
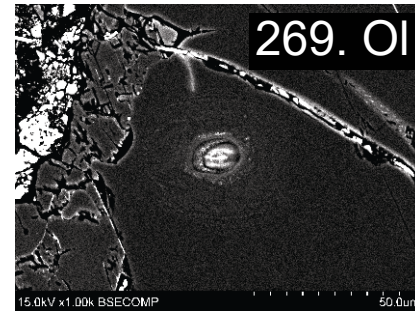
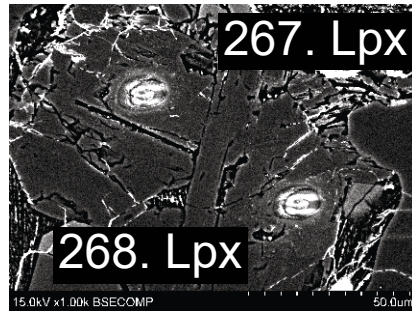
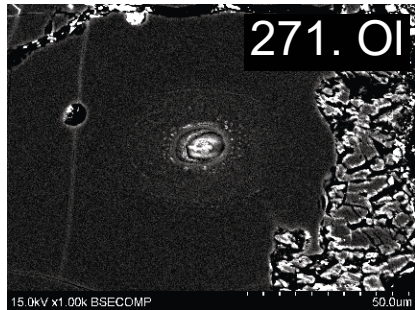
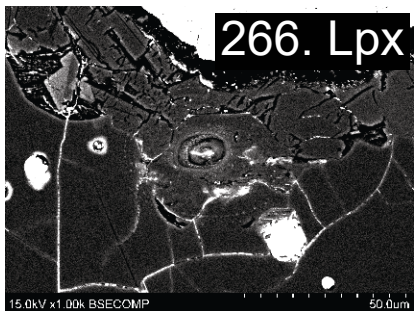
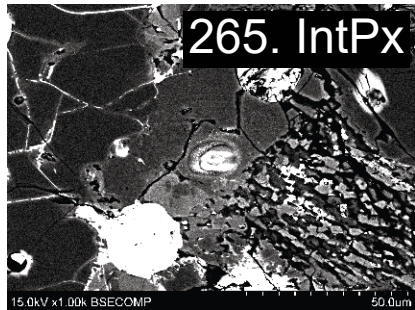
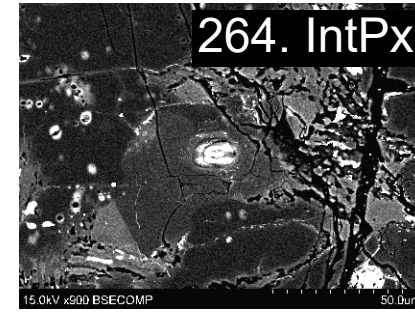
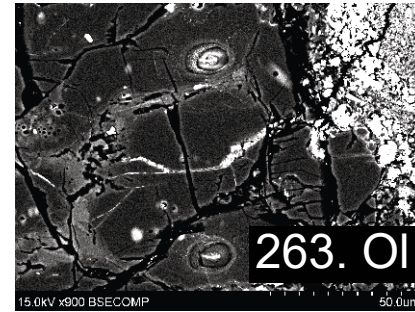
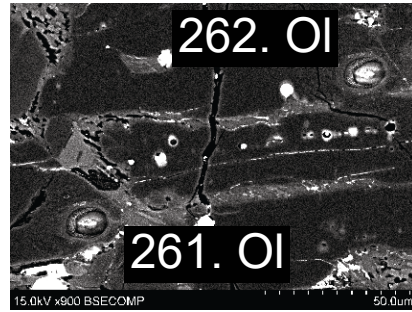
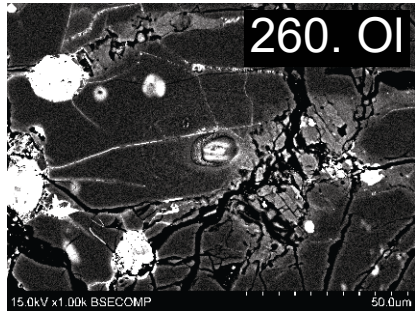
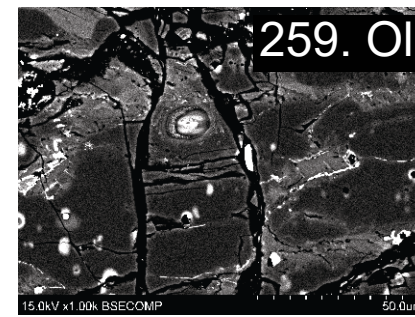
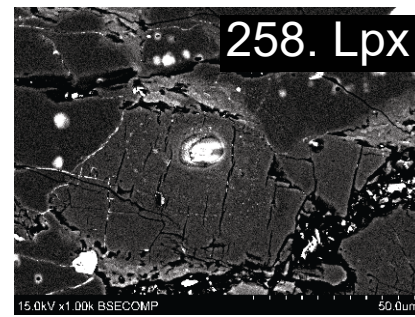
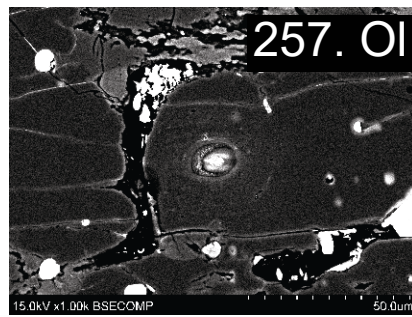
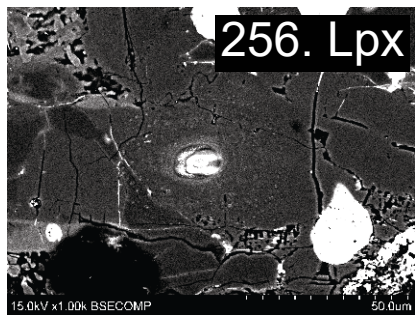


#4



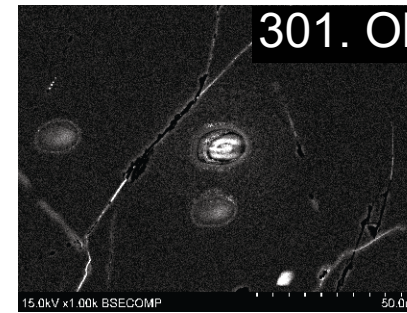
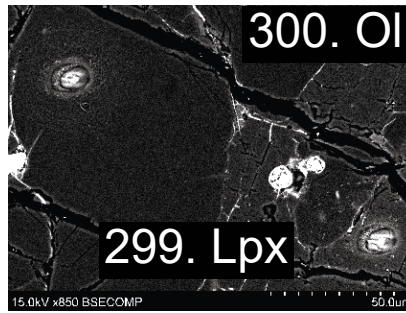
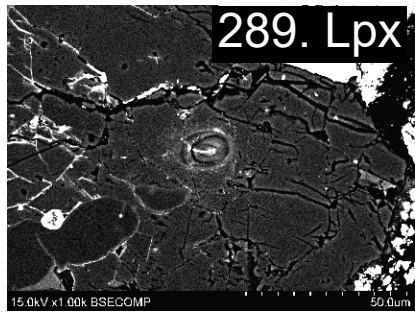
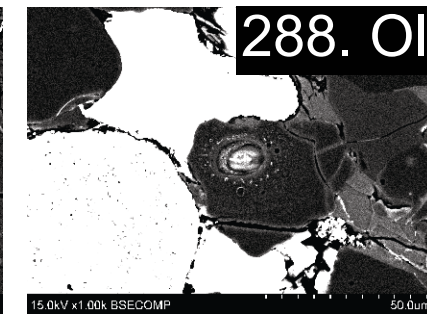
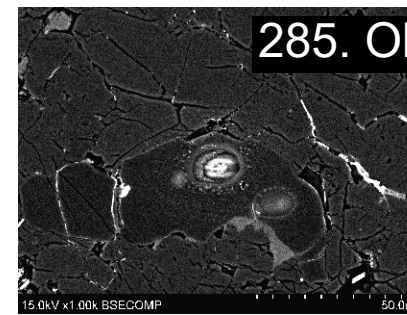
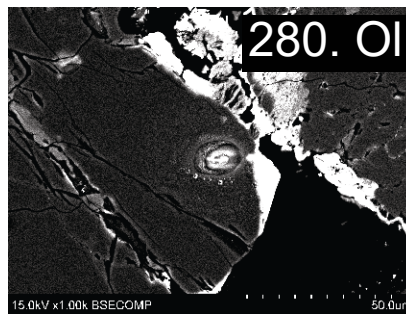
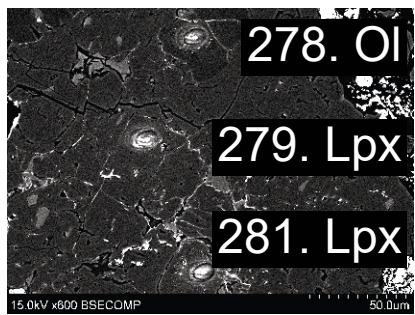
#5

#6

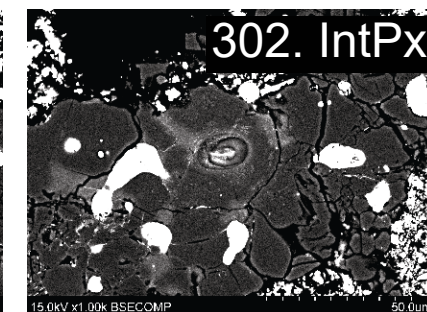
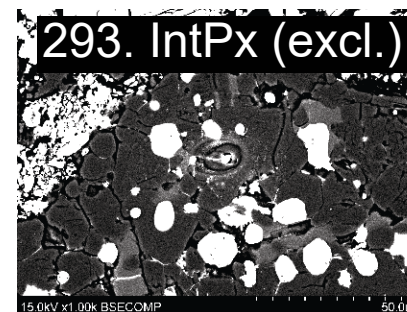
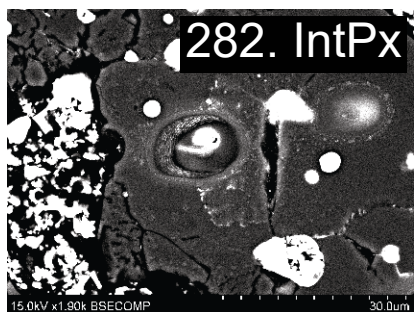
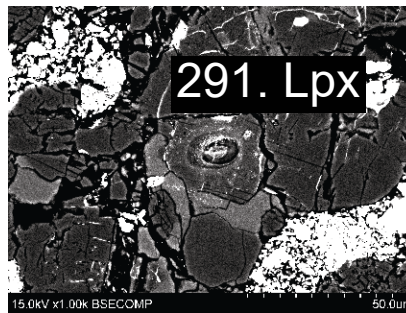
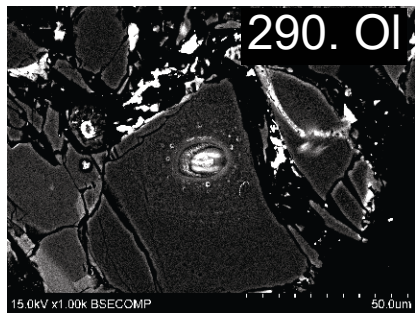
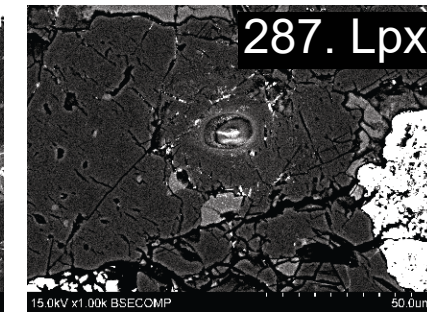
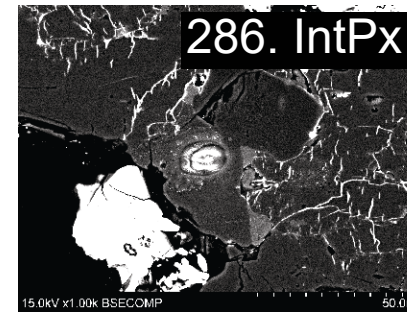
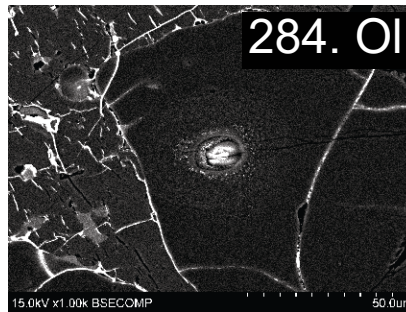
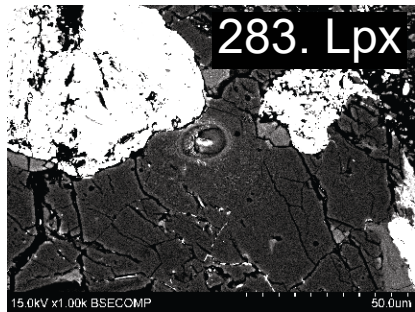


#7

#8

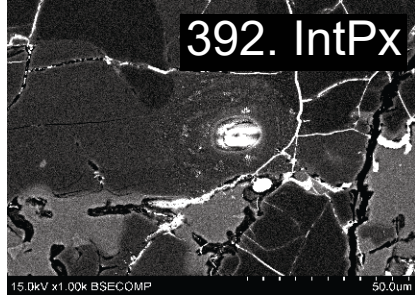
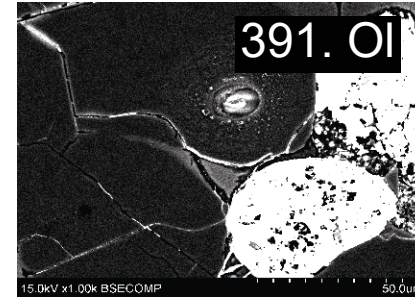
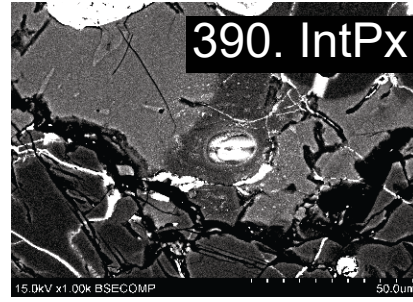
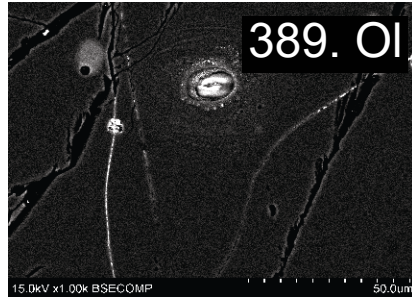
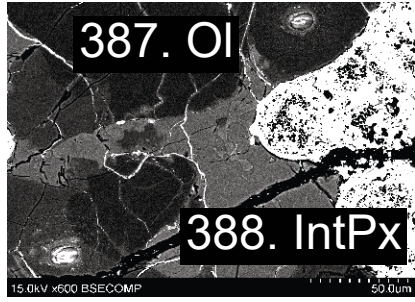
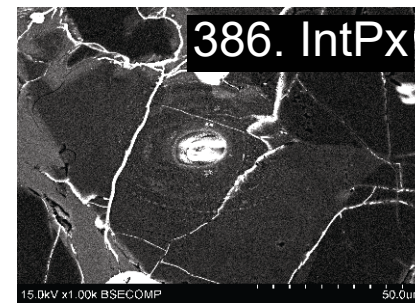
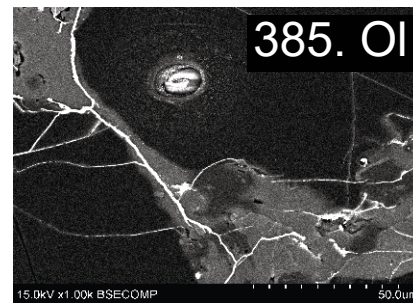
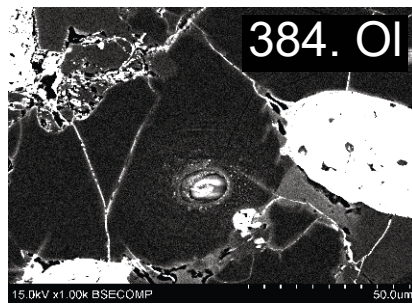
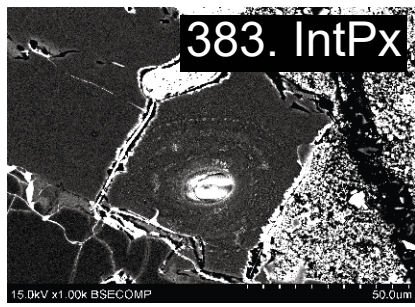


#9

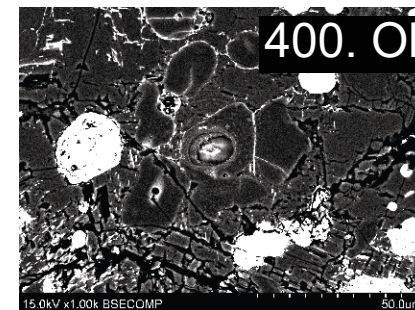
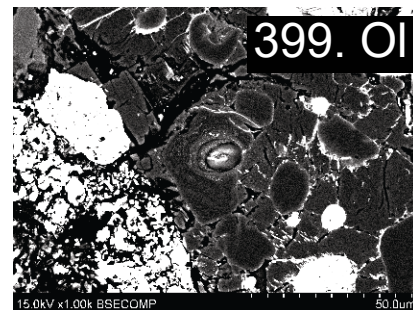
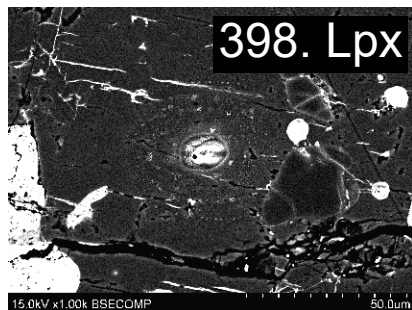
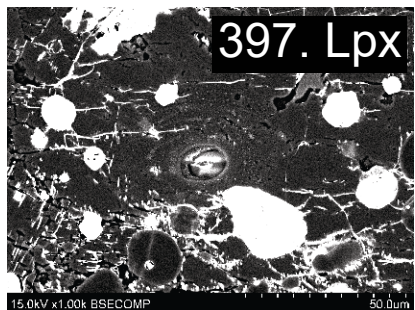
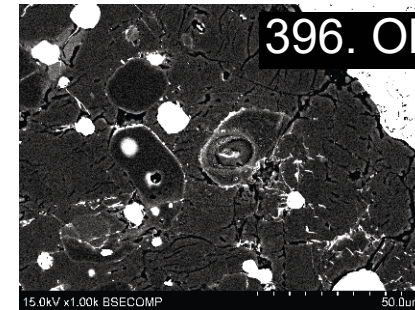
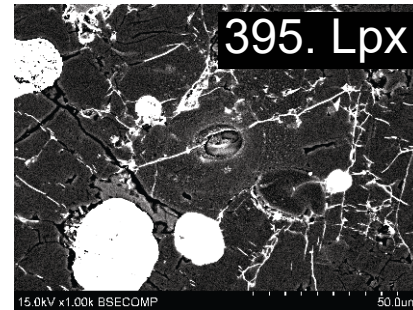
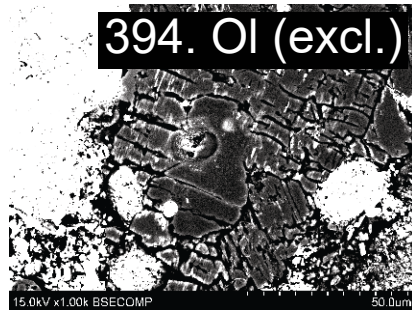
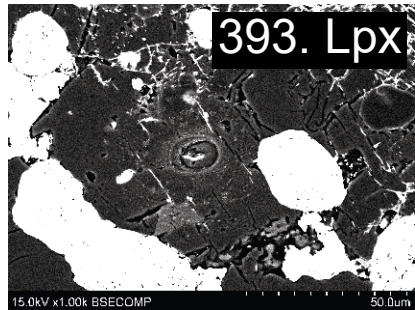


Rim

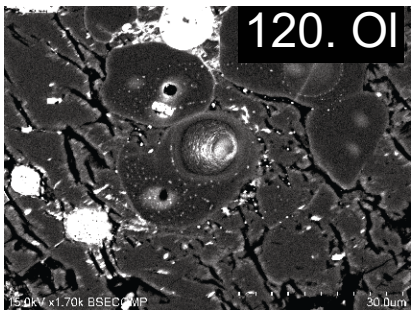
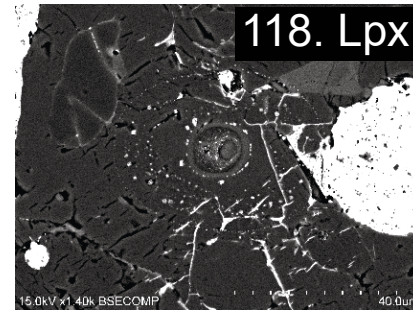
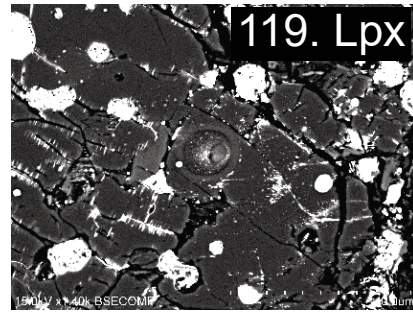
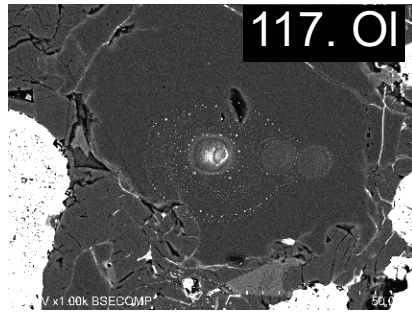
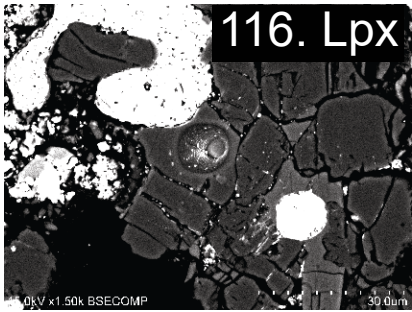
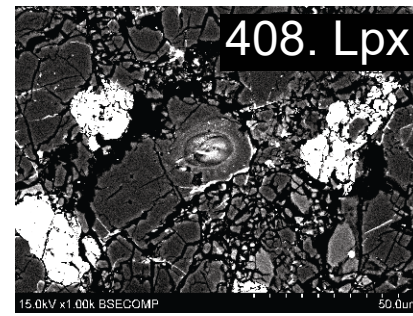
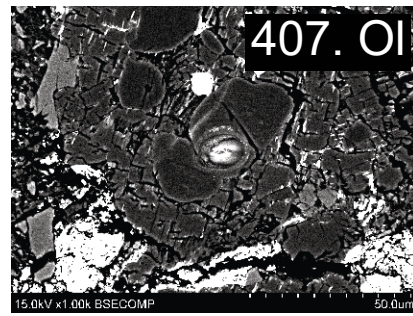
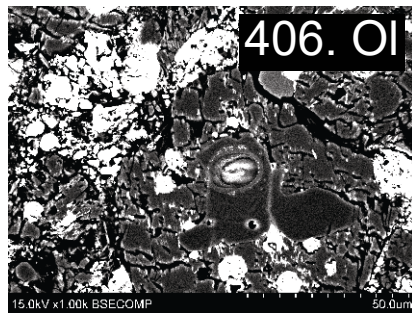
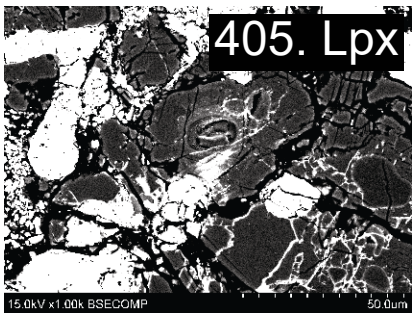
#10



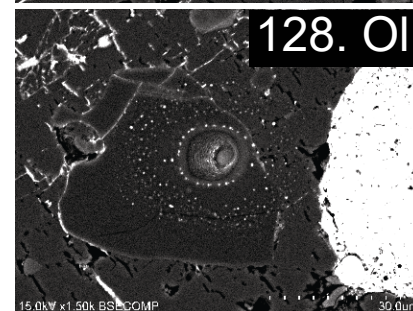
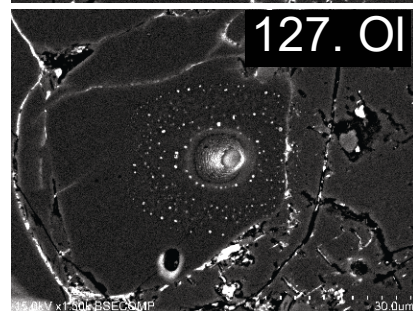
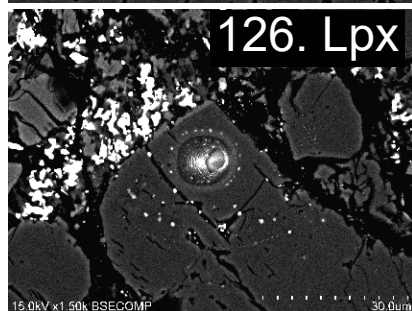
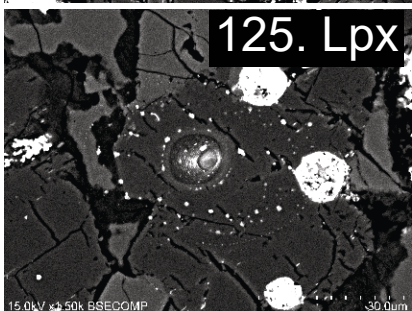
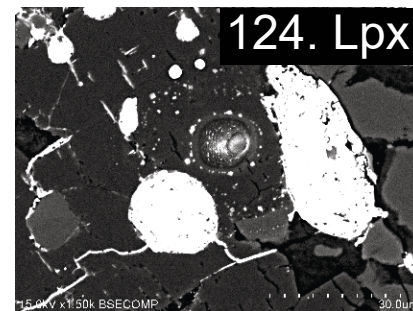
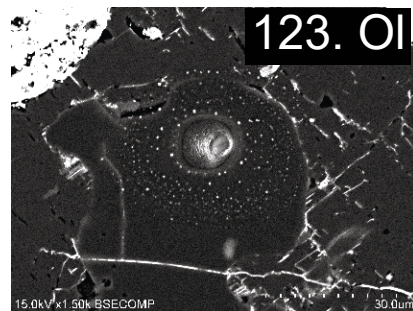
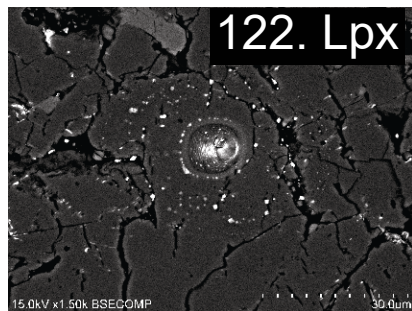
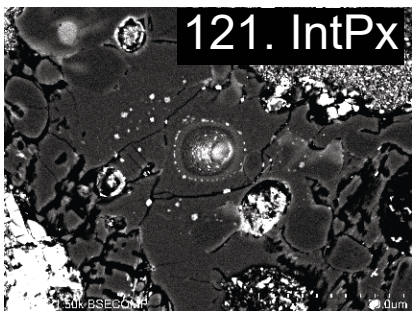
#11



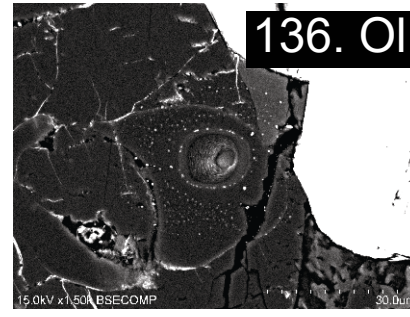
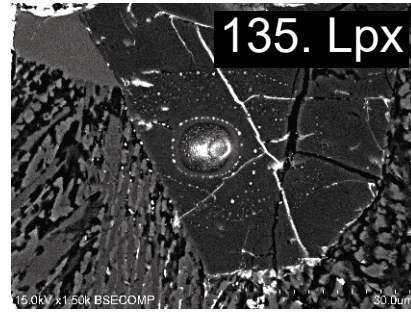
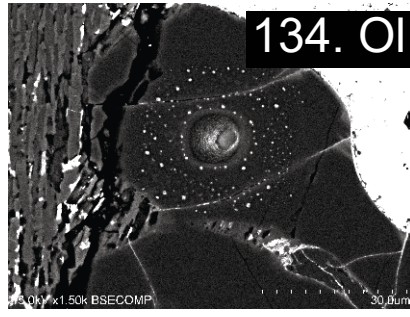
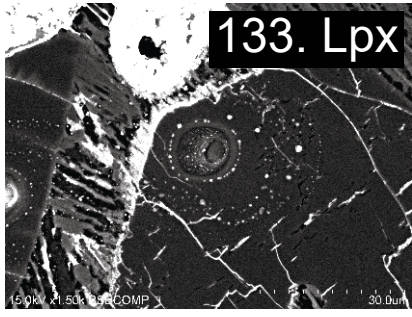
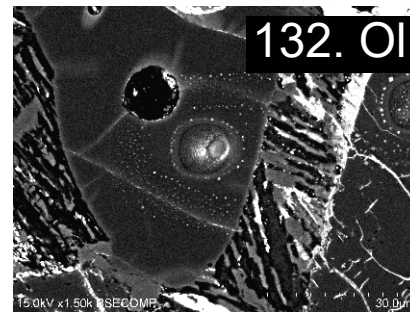
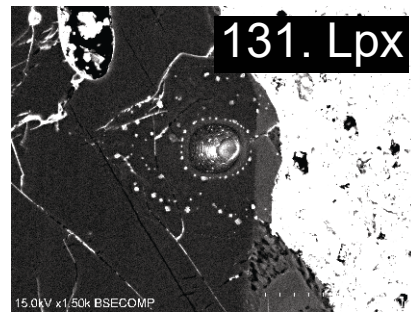
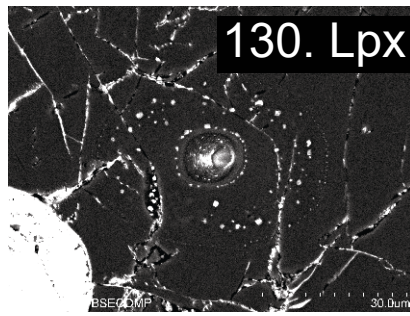
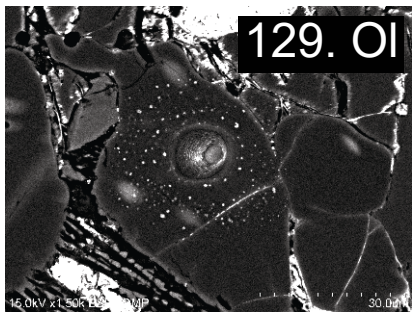
#12



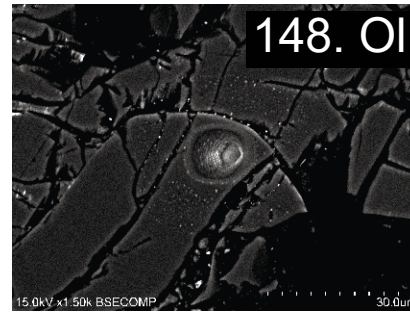
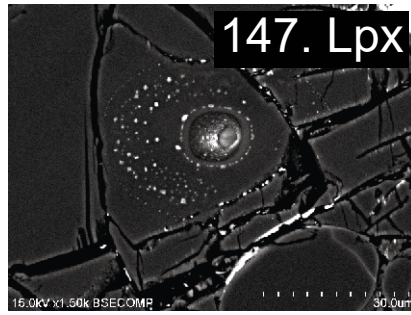
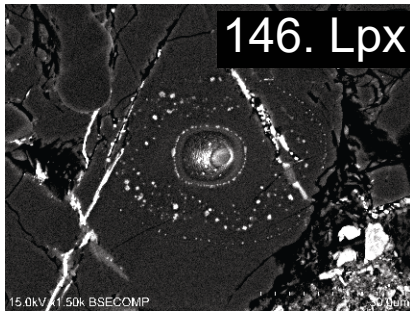
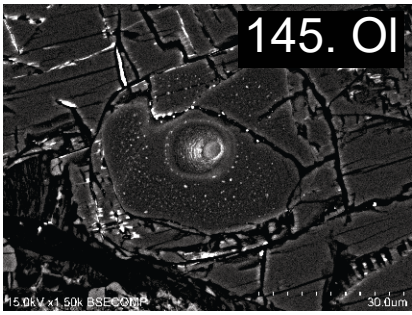
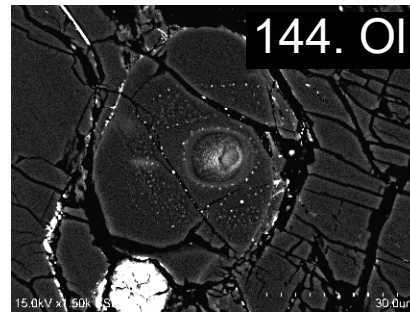
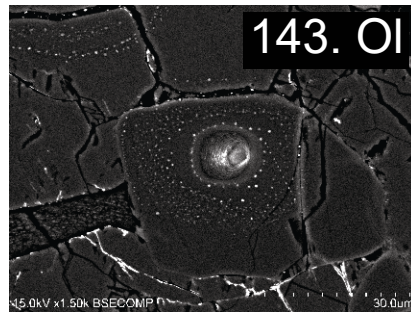
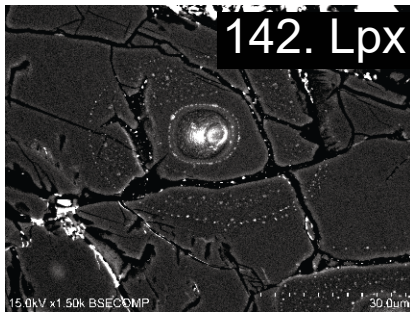
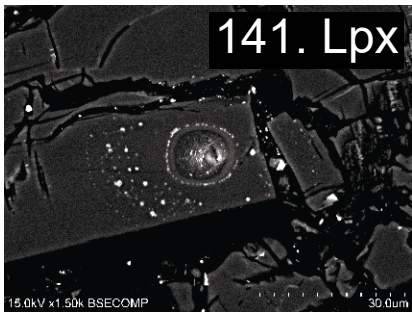
#13



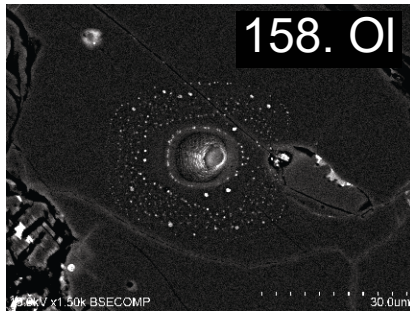
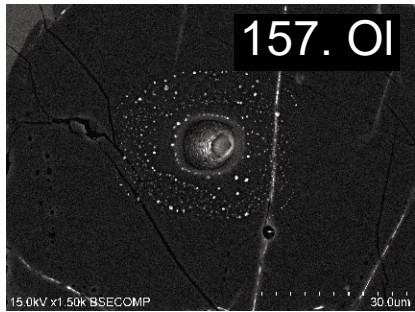
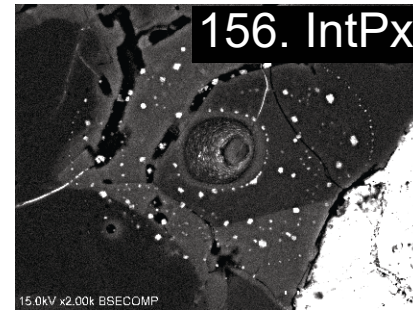
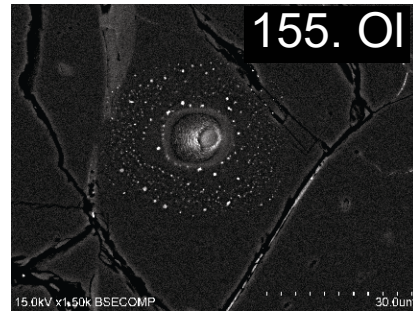
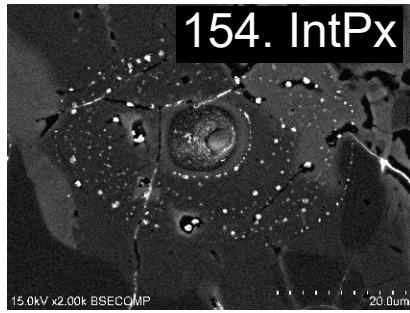
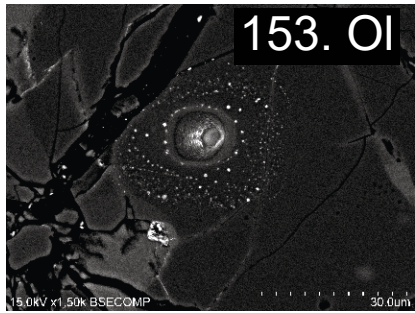
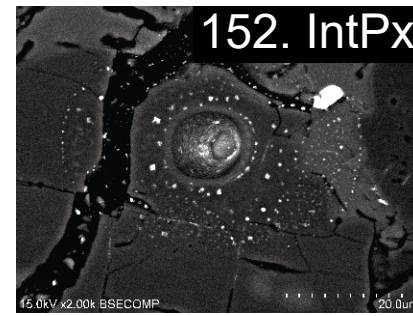
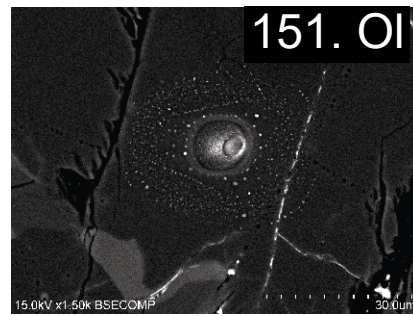
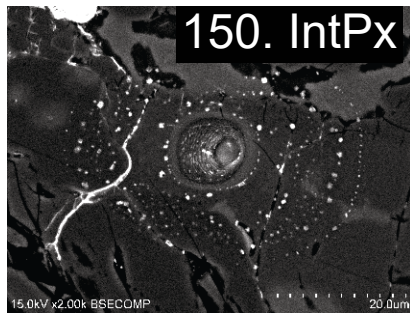
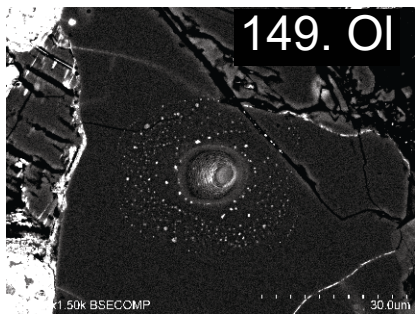
#14



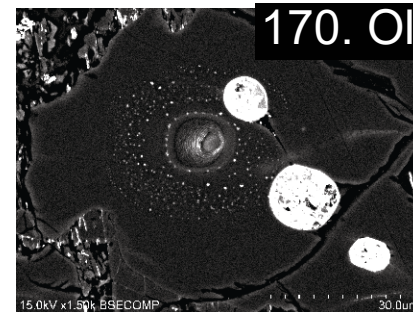
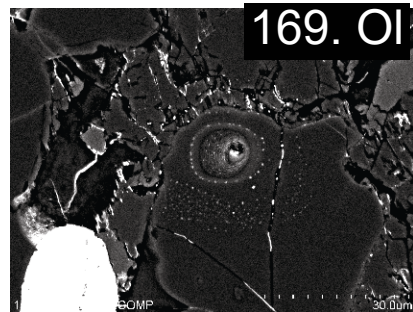
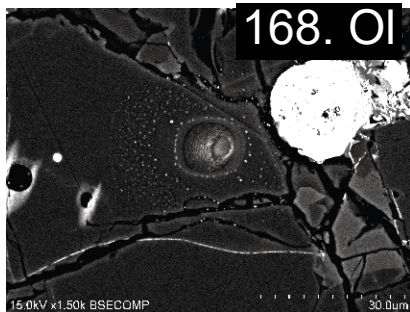
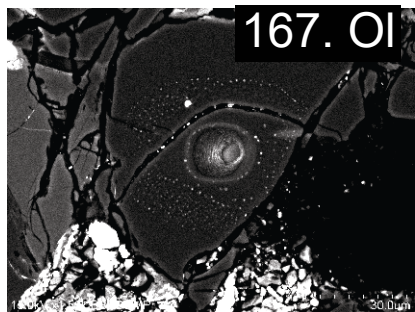
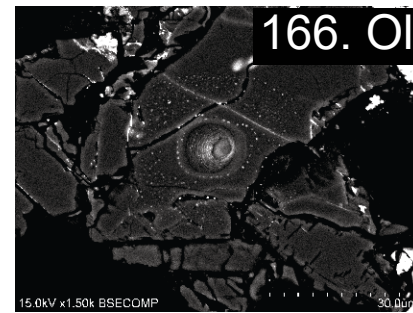
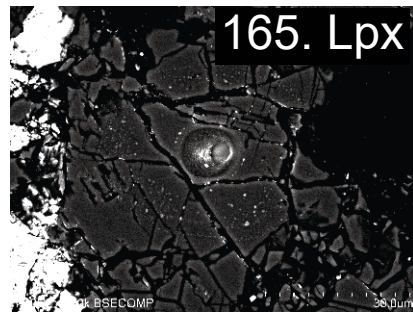
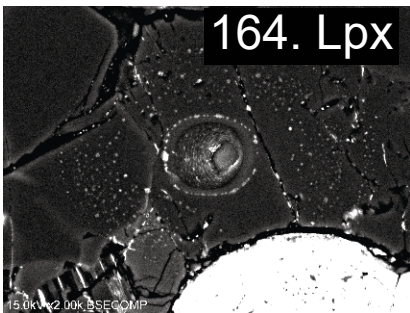
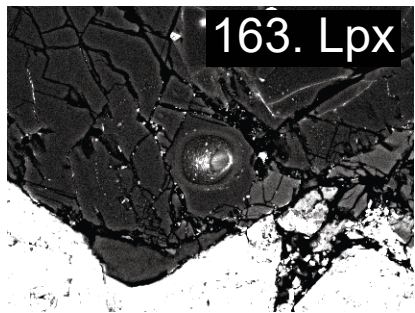
#15



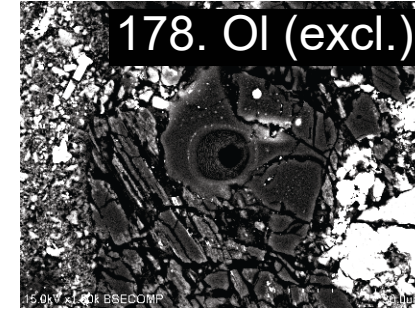
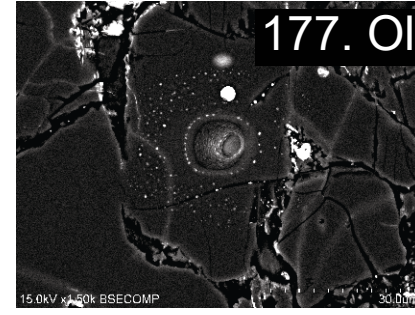
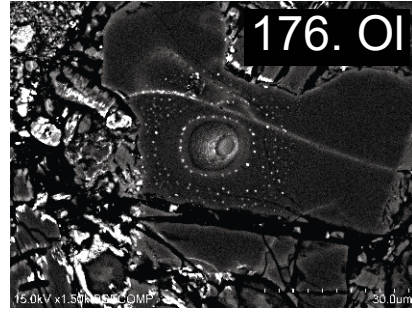
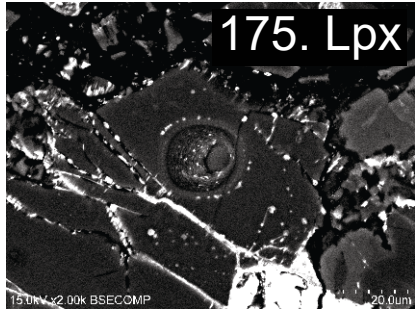
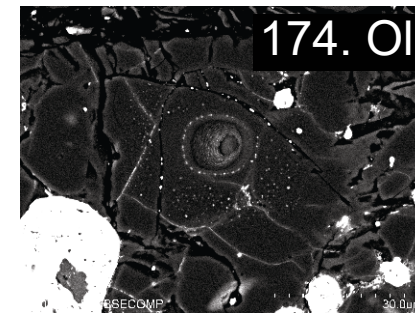
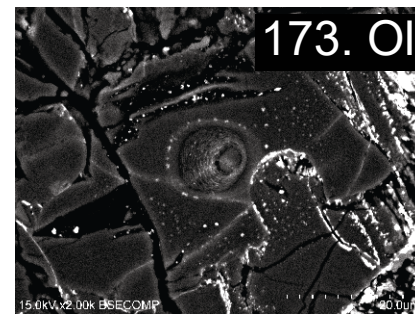
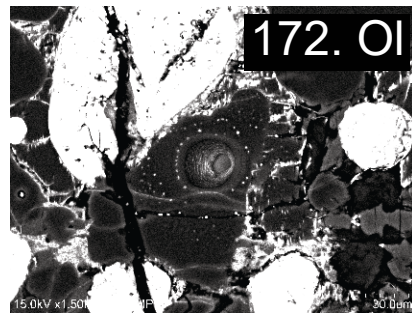
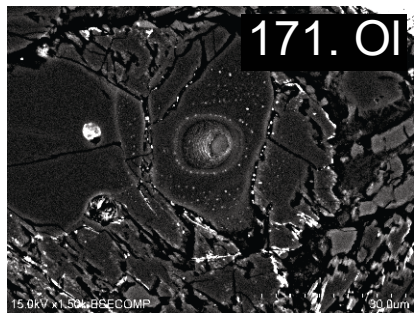
#16



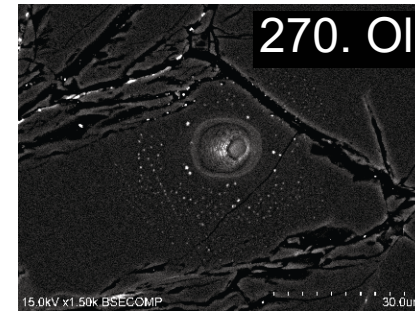
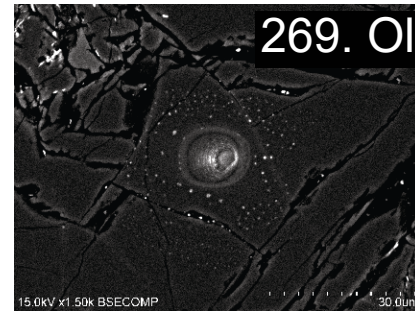
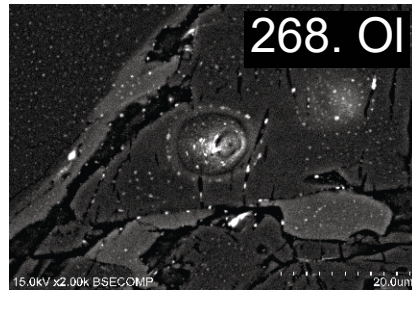
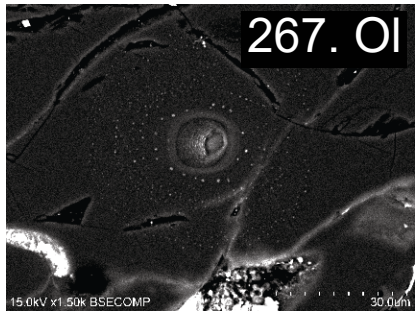
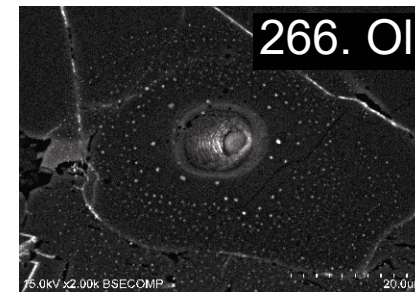
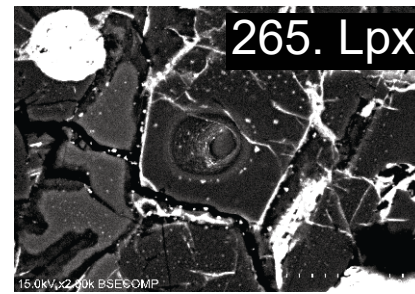
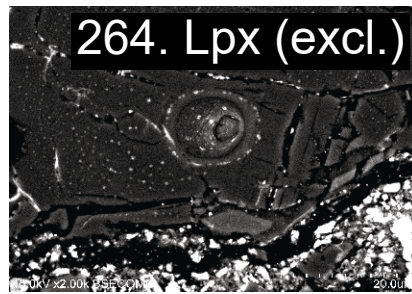
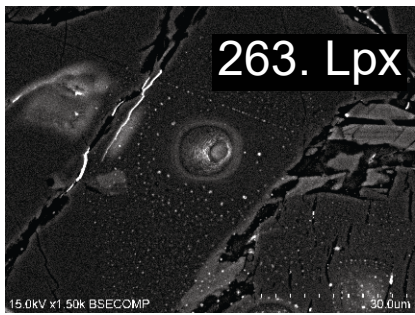
#17



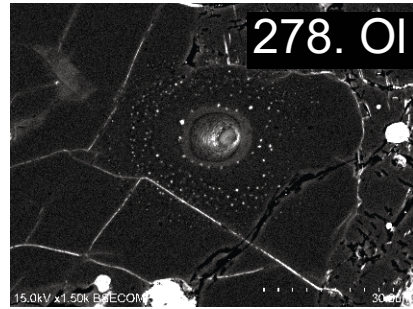
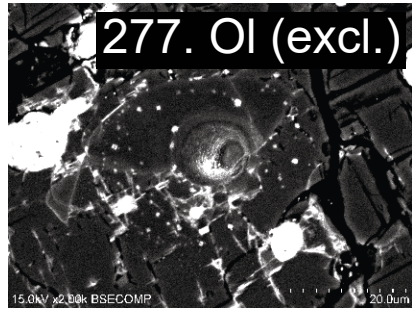
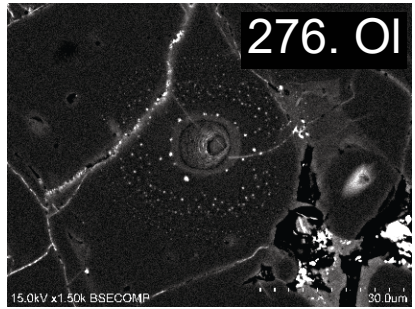
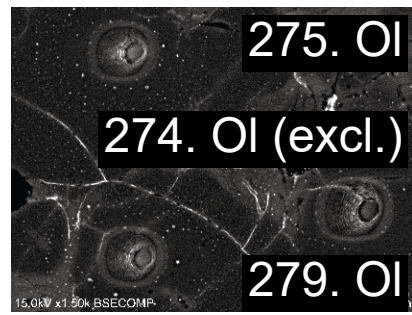
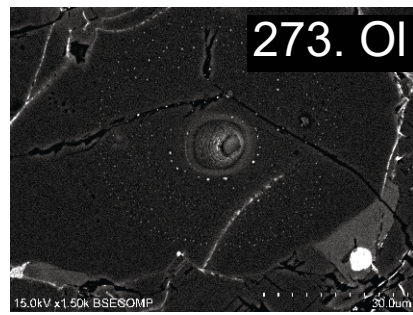
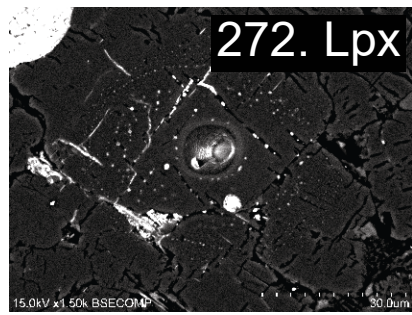
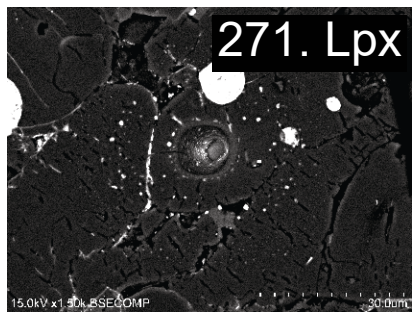
#18



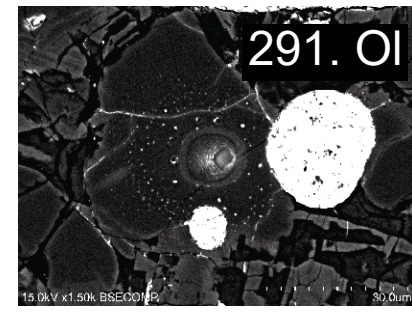
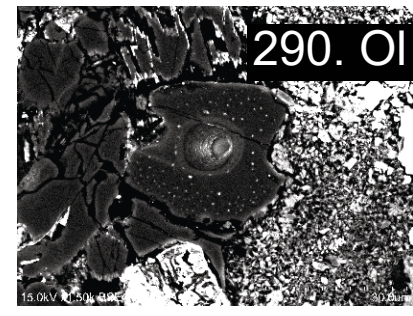
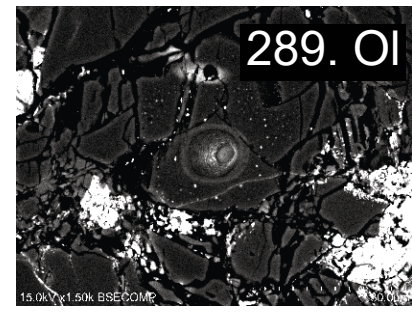
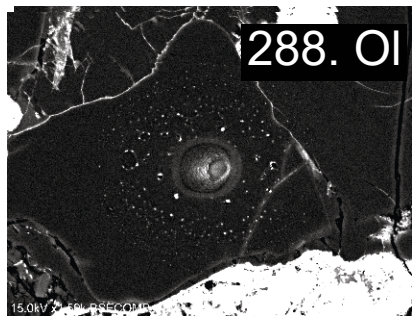
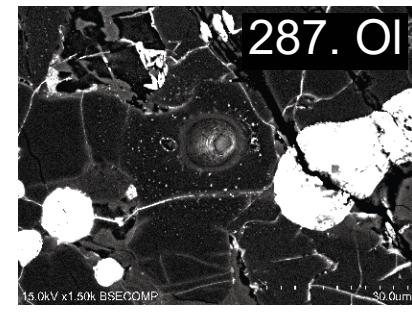
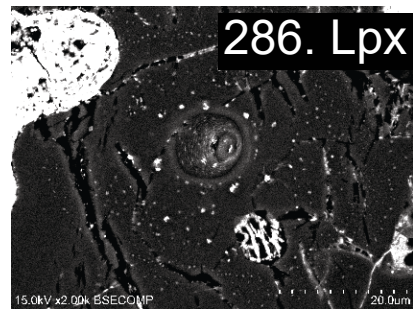
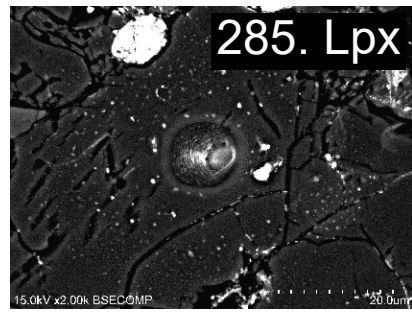
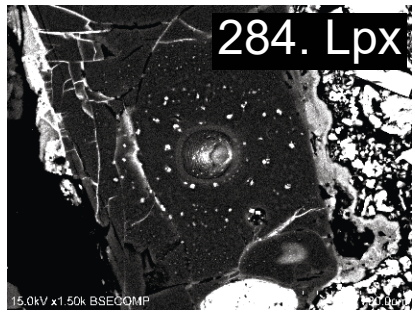
#19



#20



#21



#22

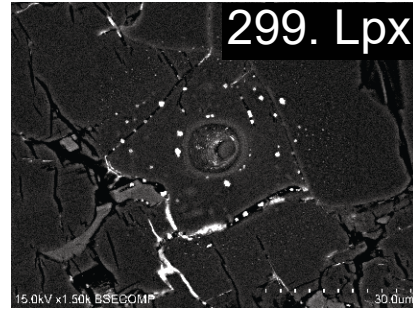
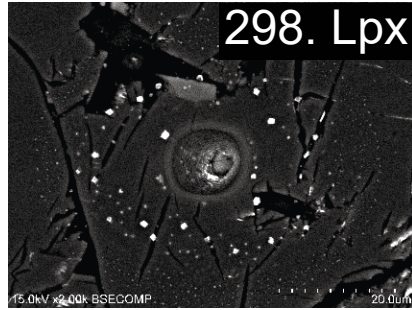
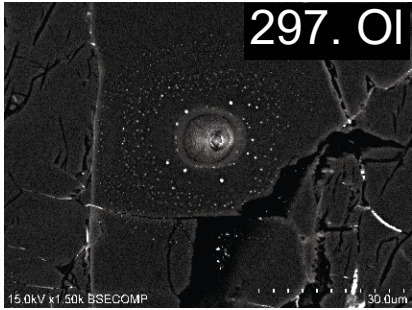
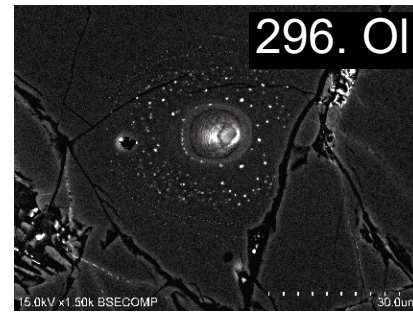
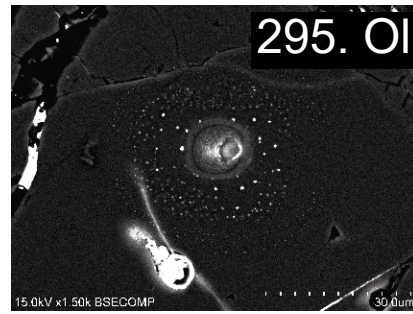
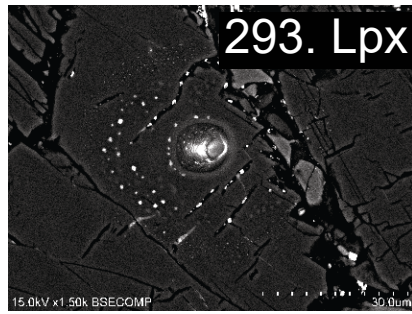
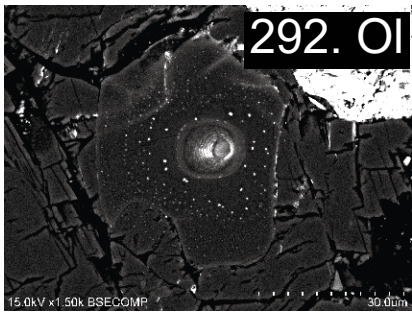
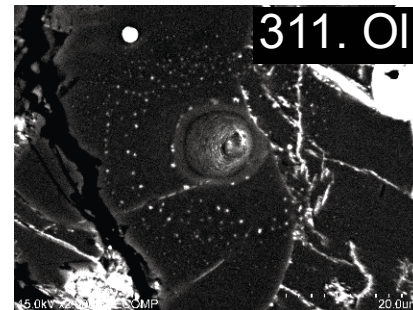
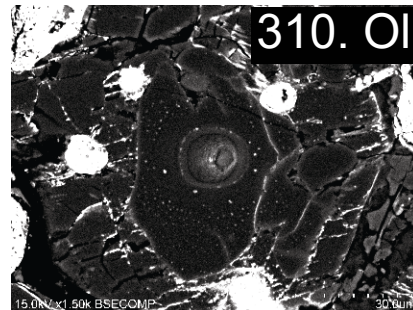
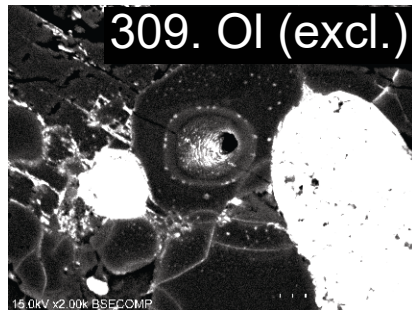
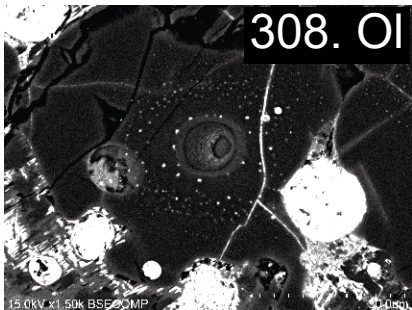
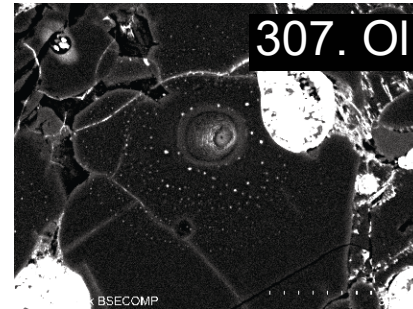
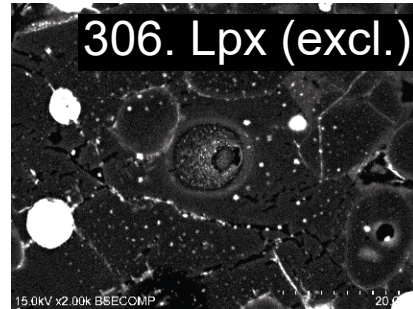
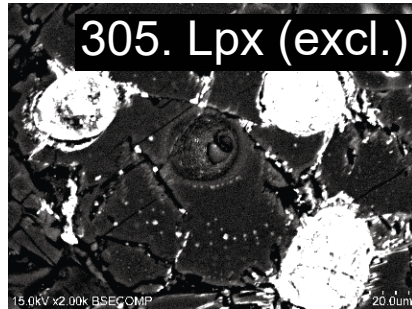
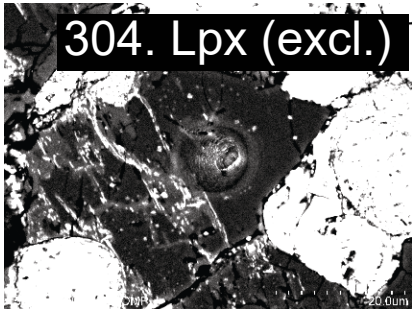
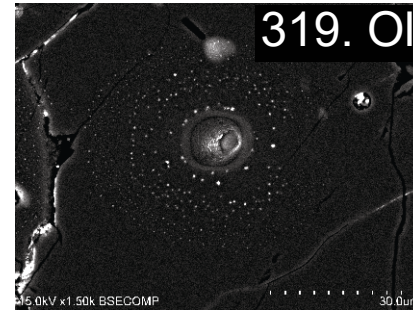
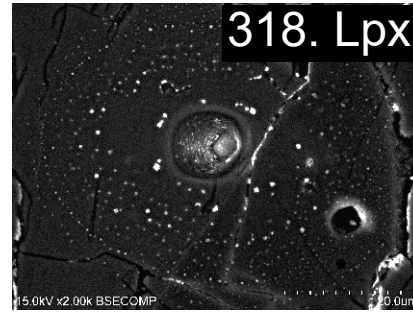
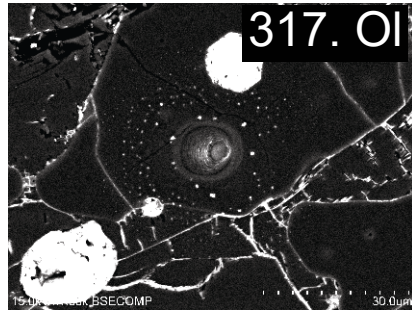
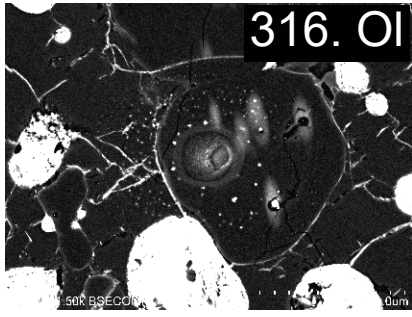
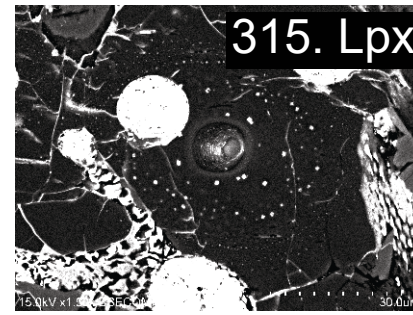
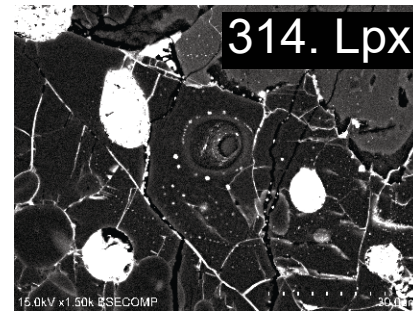
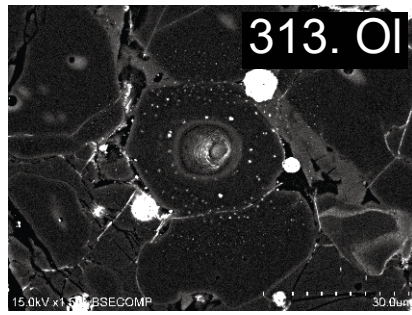


image for 294. Lpx
missing. See EA2
p. 22 for analysis
position

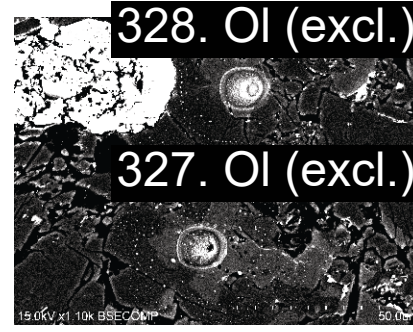
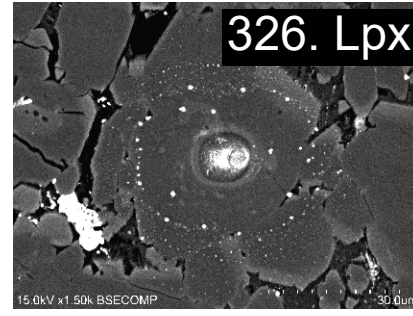
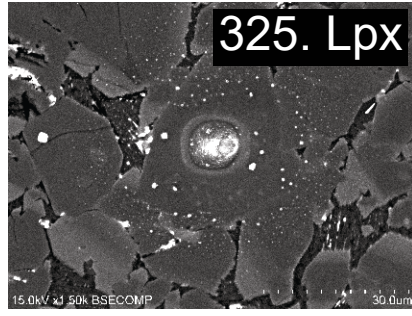
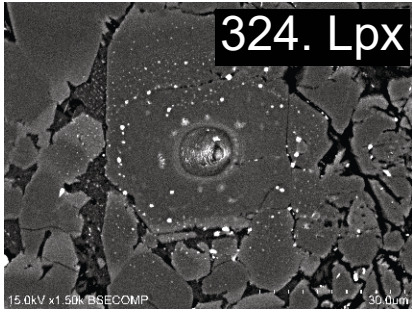
#23



#24



#25



#26

