

Supplementary tables, figures and files to the article:

**Using host species traits to understand the *Wolbachia*
infection distribution across terrestrial beetles**

Łukasz Kajtoch, Michał Kolasa, Daniel Kubisz, Jerzy M.Gutowski, Radosław Ścibior,
Miłosz A. Mazur, Milada Holecová

SCIENTIFIC REPORTS

DOI:10.1038/s41598-018-38155-5

Supplementary Table S1. Summary of *Wolbachia* infection status with respect to taxonomy of examined beetle hosts (A) and with respect to ecological and biological traits of examined beetle hosts (B).

		A – taxonomy																											
group	family																												
taxonomic units	Anthicidae	Apionidae	Bostrichidae	Buprestidae	Cantharidae	Carabidae	Cerambycidae	Chrysomelidae	Cleridae	Coccinellidae	Curculionidae	Dascillidae	Dasytidae	Dermeestidae	Elateridae	Erotylidae	Geotrupidae	Lucanidae	Lycidae	Melandryidae	Mordellidae	Mycetophagidae	Nitidulidae	Oedemeridae	Omalisidae	Pyrochroidae	Pythidae	Rhynchitidae	Salpingidae
species infected	2	15	1	6	8	47	38	39	3	16	31	1	2	2	4	6	2	1	1	1	2	5	1	3	1	2	1	3	1
A	1	7	0	1	0	9	6	10	0	3	20	0	0	0	0	3	0	0	0	0	0	0	0	0	0	0	0	1	0
B	0	0	0	1	0	4	5	7	0	3	10	0	0	0	0	2	0	0	0	0	0	0	0	0	0	0	0	0	0
AB	0	3	0	0	0	3	0	1	0	0	5	0	0	0	0	1	0	0	0	0	0	0	0	0	0	0	0	1	0
AB	1	4	0	0	0	2	1	2	0	0	5	0	0	0	0	0	0	0	0	0	0	0	0	0	0	0	0	0	0
group	family								superfamily								infraorder					suborder							
taxonomic units	Scarabaeidae	Scraptiidae	Silphidae	Silvanidae	Sphindidae	Staphylinidae	Tenebrionidae	Zopheridae	Bostrichoidea	Buprestoidea	Caraboidea	Chrysomeloidea	Cleroidea	Cucujoidea	Curculionoidea	Dascilloidea	Elateroidea	Scarabaeoidea	Staphylinoidea	Tenebrionoidea	Cucujiformia	Bostrichiformia	Elateriformia	Carabiformia	Scarabaeiformia	Staphylinoidea	Polyphaga	Adephaga	
species infected	28	2	4	1	1	8	7	1	3	6	47	78	5	24	49	1	14	31	13	26	182	3	21	47	31	13	250	47	
A	7	2	2	1	0	5	3	0	0	1	9	16	0	6	29	0	7	7	6	57	0	1	9	7	7	72	9		
B	4	2	2	1	0	4	3	0	0	1	4	12	0	5	11	0	4	6	5	33	0	1	4	4	6	44	4		
AB	3	0	0	0	0	0	0	0	0	0	3	1	0	1	9	0	3	0	0	11	0	0	3	3	0	14	3		
AB	0	0	0	0	0	1	0	0	0	0	2	3	0	0	9	0	0	1	1	13	0	0	2	0	1	14	2		

B – ecological/biological traits																														
traits	trophic guild					habitat preferences			microhabitats						distribution				range		thermal preferences		reproduction		body size			mobility		
states	phytophagous	mycetophagous	predators	saprophagous	cambioxylophagous	forest-dwellers	open land-dwellers	ubiquitous	coprophilous	epigeic	herbophilous	hygrophilous	mycetophilous	necrophilous	cambioxylophilous	continental	mediterranean	mountainous	temperate	widespread	fragmented	warm	neutral	parthenogenetic	sexual	large	medium	small	mobile	sedentary
species	101	17	91	35	53	112	131	54	20	38	128	25	15	5	66	25	17	11	244	251	46	35	262	5	292	23	174	100	274	23
infected	39	4	16	12	10	26	43	12	7	5	43	9	4	2	11	8	2	3	68	68	13	11	70	4	77	3	38	40	71	10
A	18	3	10	8	9	21	21	6	4	4	21	4	3	2	10	4	1	1	42	39	9	6	42	2	46	1	26	21	42	6
B	10	1	3	3	0	3	13	1	3	1	10	2	1	0	0	1	1	0	15	15	2	1	16	1	16	1	5	11	14	3
AB	11	0	3	1	1	2	9	5	0	0	12	3	0	0	1	3	0	2	11	14	2	4	12	1	15	1	7	8	15	1

Supplementary Table S2. Basic statistics describing intra- and inter-group genetic distances calculated for *Wolbachia* strains found in superfamilies and trophic guilds of examined beetles.

variable	N	Average	Min	Max	SD
superfamilies					
intra	7	9.6	5.7	16.1	3.8
inter	21	11.6	7.3	16.1	2.5
trophic guilds					
intra	5	9.3	6.5	11.4	2.4
inter	10	10.5	8.3	13.0	1.4

Supplementary Table S3. Sums of Akaike Information Criterion weights obtained from Generalized Linear Models (presented in Table 5) for selected predictors explaining either infection status of examined beetle hosts (*Wolbachia* infected vs uninfected) or infection by two supergroups (A vs B).

Variable	infected vs uninfected	supergroups A vs B
Distance	0.530	0.548
Trophism	0.511	0.319
Range/Climate	0.420	0.309
Habitat	0.404	0.506
Body	0.460	0.305
Reproduction mode	0.571	0.276
Mobility	0.435	0.313

Supplementary Table S4. Characteristics of sampling of beetle species for Wolbachia screening with accession numbers to GenBank (cox1 - cytochrome oxidase subunit I gene generated from beetle DNA and Wolbachia housekeeping genes: wsp - Wolbachia surface protein, gatB - aspartylglutamyl-tRNA(Gln) amidotransferase, subunit B; coxA - cytochrome c oxidase, subunit I; hcpA - conserved hypothetical protein; fsz - cell division protein, and fructose-bisphosphate aldolase). Italicized cox1 numbers downloaded from GenBank from other studies (italicized and underlined – single sequences of congeneric taxa for species which missed cox1, used for distances calculation). Distribution of sampling sites is presented on supplementary file 1.

Species	Country	Locality	Year	Voucher	cox1	wsp	gatB	coxA	hcpA	fbpA	fsz
<i>Abax parralelepipedus</i>	Poland	Chełm	2015	W00218a	MH020426						
<i>Abax parralelepipedus</i>	Poland	Chełm	2015	W00218b	MH020427						
<i>Abax parralelelus</i>	Poland	Szyk	2014	W00232a	MH020429	MG987893	MG987944	MG987643	MG987739	MG987691	MG987977
<i>Adalia bipunctata</i>	Poland	Białowieża Forest	2016	W00131a	MH115505						
<i>Adalia bipunctata</i>	Poland	Koryciny	2015	W00131b	MH115506						
<i>Agapanthia villosoviridescens</i>	Poland	Białowieża Forest	2016	W00055a	<i>KU919520</i>						
<i>Agapanthia villosoviridescens</i>	Poland	Białowieża Forest	2016	W00055b	+						
<i>Agapanthia villosoviridescens</i>	Poland	Białowieża Forest	2016	W00055c							
<i>Agonum marginatum</i>	Slovakia	Andrejovka	2017	W00211a	MH020395						
<i>Agonum marginatum</i>	Poland	Lipnica Wielka	2017	W00211b		MG987900			MG987723		
<i>Agonum marginatum</i>	Poland	Tolkarnicko	2017	W00211c							
<i>Agrilus derasofasciatus</i>	Poland	Białowieża Forest	2016	W00234a	MH115496						
<i>Agrilus suvorovi</i>	Poland	Białowieża Forest	2016	W00075a	MH115551						
<i>Agrilus suvorovi</i>	Poland	Borowiec Radom	2016	W00075b							
<i>Agrypnus murinus</i>	Poland	Białowieża Forest	2016	W00244a	MH115536						
<i>Alosterna tabacicolor</i>	Poland	Rogalin	2016	W00081a	MH020351						
<i>Alosterna tabacicolor</i>	Poland	Białowieża Forest	2016	W00081b							
<i>Alosterna tabacicolor</i>	Poland	Grzybowa	2017	W00081c	MH020352						
<i>Altica oleracea</i>	Bulgaria	Anevo	2015	W00018a	MH020485					+	
<i>Altica oleracea</i>	Bulgaria	Pawel Banja	2015	W00018b	MH020486						
<i>Altica oleracea</i>	Bulgaria	Karlovo	2015	W00018c	MH020487						
<i>Amara similata</i>	Poland	Chełm	2015	W00227a	MH020396	MG987834	MG987946	MG987641	MG987749	MG987699	MG987979
<i>Amphimallon solstitialis</i>	Poland	Kędzierzyn-Koźle	2017	W00065a	MH020490						
<i>Amphimallon solstitialis</i>	Poland	Suchy Bór	2017	W00065b	MH020491						
<i>Anaspis brunnipes</i>	Poland	Szymiszów	2017	W00167a	MH020278	MG987889			+		
<i>Anaspis brunnipes</i>	Poland	Szymiszów	2017	W00167b	MH020280	MG987890					
<i>Anaspis brunnipes</i>	Poland	Szymiszów	2017	W00167c	MH020279						
<i>Anaspis frontalis</i>	Poland	Kędzierzyn-Koźle	2017	W00166a	MH020275	MG987880			+		
<i>Anaspis frontalis</i>	Poland	Kędzierzyn-Koźle	2017	W00166b	MH020276						
<i>Anaspis frontalis</i>	Poland	Kędzierzyn-Koźle	2017	W00166c	MH020277	MG987881			+		
<i>Anaspis frontalis</i>	Poland	Dursztyn	2014	W00166d	MG987882				+		
<i>Anastrangalia reyi</i>	Poland	Białowieża Forest	2016	W00261a	MH020347	MG987848	MG987955	MG987634	+	+	MG988052
<i>Anastrangalia reyi</i>	Poland	Białowieża Forest	2016	W00261b	MH020348	MG987849	MG987956	MG987646		+	+
<i>Anastrangalia sanguinolenta</i>	Poland	Białowieża Forest	2016	W00262a	MH020349						
<i>Anastrangalia sanguinolenta</i>	Poland	Białowieża Forest	2016	W00262b	MH020350						
<i>Anatis ocellata</i>	Poland	Porytowe Wzgórze	2015	W00225a	MH020519						
<i>Anomala dubia</i>	Poland	Knyszyn Forest	2016	W00062a	MH115533						
<i>Anomala dubia</i>	Poland	Białowieża Forest	2016	W00062b	+						
<i>Anomala dubia</i>	Poland	Lysaków	2016	W00062c	+						
<i>Anoplodera sexguttata</i>	Poland	Białowieża Forest	2016	W00082a	MH020345						
<i>Anoplodera sexguttata</i>	Poland	Poznachowice	2017	W00082b	MH020346						
<i>Anoplodera sexguttata</i>	Poland	Kepie	2017	W00082c							
<i>Anoplotrupes stercorosus</i>	Poland	Grajów	2017	W00067a	MH020522						
<i>Anoplotrupes stercorosus</i>	Bulgaria	Troian	2015	W00067b	MH020523						
<i>Anoplotrupes stercorosus</i>	Poland	Białowieża Forest	2014	W00067d	MH020524						
<i>Anostirus castaneus</i>	Poland	Białowieża Forest	2014	W00138a	MH115530						
<i>Anostirus castaneus</i>	Poland	Lapsze Niżne	2014	W00138b	+						
<i>Anthaxia nitidula</i>	Poland	Sromowce Niżne	2014	W00073a	MH115561						
<i>Anthaxia nitidula</i>	Austria	Porrau	2015	W00073b	+						
<i>Anthaxia nitidula</i>	Poland	Grzybowa	2016	W00073c	+						
<i>Anthaxia quadripunctata</i>	Poland	Chrusty	2015	W00074a	<i>KM452657</i>						
<i>Anthaxia quadripunctata</i>	Poland	Białowieża Forest	2014	W00074b							
<i>Anthonomus rubi</i>	Ukraine	Zvenyhorod	2010	W00016a	MH020261	MG987847	MG987937	+	MG987761	MG987704	MG988013
<i>Anthonomus rubi</i>	Hungary	Lénárdaróc	2012	W00016b	+						
<i>Anthonomus rubi</i>	Poland	Ślesin	2010	W00016c	+				MG987770		MG987983
<i>Aphodius ater</i>	Romania	Fenes	2016	W00122a	MH020313	MG987780					MG988043
<i>Aphodius ater</i>	Poland	Lipnica Wielka	2017	W00122b	MH020314	MG987781					MG988044
<i>Aphodius depressus</i>	Romania	Fenes	2016	W00084a	MH020525						
<i>Aphodius depressus</i>	Romania	Fenes	2016	W00084b	MH020526						
<i>Aphodius depressus</i>	Poland	Wielopole	2015	W00084c	MH020527						
<i>Aphodius depressus</i>	Bulgaria	Troian	2015	W00084d	+						
<i>Aphodius depressus</i>	Bulgaria	Troian	2015	W00084e	+						
<i>Aphodius erraticus</i>	Poland	Wielopole	2015	W00123a	+						
<i>Aphodius erraticus</i>	Romania	Islaz	2016	W00123b							
<i>Aphodius erraticus</i>	Poland	Wielopole	2015	W00123c							
<i>Aphodius fossor</i>	Bulgaria	Balkanec	2015	W00124a	MH020305						
<i>Aphodius fossor</i>	Poland	Wielopole	2015	W00124b	MH020306						
<i>Aphodius granarius</i>	Bulgaria	Kalofer	2015	W00118a		+					MG988014
<i>Aphodius granarius</i>	Romania	Fenes	2016	W00118b	MH020315	+					MG988040
<i>Aphodius granarius</i>	Bulgaria	Kalofer	2015	W00118c		+					MG988041
<i>Aphodius haemorrhoidalis</i>	Poland	Sromowce Niżne	2014	W00119a	MH020316	MG987859					
<i>Aphodius haemorrhoidalis</i>	Poland	Wielopole	2015	W00119b		MG987860					
<i>Aphodius haemorrhoidalis</i>	Poland	Niebrzegów	2015	W00119c		MG987861					
<i>Aphodius luridus</i>	Romania	Fenes	2016	W00120a	MH115495						
<i>Aphodius luridus</i>	Poland	Sromowce Niżne	2014	W00120b	+						
<i>Aphodius luridus</i>	Poland	Wielopole	2015	W00120c							
<i>Aphodius pedellus</i>	Bulgaria	Troian	2015	W00090a	MH020528						
<i>Aphodius pedellus</i>	Poland	Wielopole	2015	W00090b	MH020529						
<i>Aphodius pedellus</i>	Poland	Niebrzegów	2015	W00090c	MH020530						
<i>Aphodius pusillus</i>	Romania	Fenes	2016	W00087a	MH020307						
<i>Aphodius pusillus</i>	Poland	Sromowce Niżne	2014	W00087c							
<i>Aphodius pusillus</i>	Bulgaria	Kalofer	2015	W00087b							
<i>Aphodius scrutator</i>	Bulgaria	Kalofer	2015	W00125a	MH020364						
<i>Aphodius scrutator</i>	Romania	Tanacu	2016	W00125b	MH020365						
<i>Aphodius sphaecelatus</i>	Bulgaria	Troian	2015	W00089b	MH020308						
<i>Aphodius sphaecelatus</i>	Bulgaria	Balkanec	2015	W00089d							
<i>Aphodius sphaecelatus</i>	Poland	Lipnica Wielka	2015	W00089g							

<i>Aphodius sticticus</i>	Bulgaria	Kalofer	2015	W00126a	MH020310	MG987862	MG987911		MG987721	MG987675	MG988033
<i>Aphodius sticticus</i>	Bulgaria	Rocafer	2015	W00126b	MH020311	MG987863	MG987912	MG987660	MG987722	MG987676	MG988032
<i>Aphodius sticticus</i>	Romania	Fenes	2016	W00126c	MH020312						
<i>Aphthona venustula</i>	Poland	Trzebinia-Bożniowa Mt.	2015	W00035a	MH020465	MG987870	MG987918		MG987731	MG987677	MG988042
<i>Aphthona venustula</i>	Bulgaria	Balkanec	2015	W00035b							
<i>Aphthona venustula</i>	Bulgaria	Karvare	2015	W00035c		MG987871	MG987919	MG987659	MG987732	MG987678	MG988031
<i>Arhopalus rusticus</i>	Poland	Odolion ad Ciechocinek	2016	W00273a	MH020361	MG987891		MG987637	MG987740	+	MG987982
<i>Arhopalus rusticus</i>	Poland	Białowieża Forest	2014	W00273b	MH020362	+		MG987636		+	
<i>Aromia moschata</i>	Poland	Borowa	2015	W00224a	MH020476						
<i>Athous subfuscus</i>	Poland	Białowieża Forest	2014	W00280a	MH115535						
<i>Attagenus pellio</i>	Poland	Białowieża Forest	2014	W00279a	MH115500						
<i>Batophila rubi</i>	Poland	Wdżar Mt.	2014	W00036a	MH115564	MG987841	+		+	+	+
<i>Batophila rubi</i>	Poland	Dursztyn	2014	W00036b		MG987842			+		
<i>Batophila rubi</i>	Bulgaria	Balkanec	2015	W00036c		MG987843	+	+	+	+	+
<i>Bembidion articulatum</i>	Poland	Tarnawa	2015	W00148a	MH020421						
<i>Bembidion articulatum</i>	Poland	Rdzawa	2015	W00148b	MH020422						
<i>Bembidion articulatum</i>	Slovakia	Rokytov	2017	W00148f							
<i>Bembidion decorum</i>	Poland	Nowa Biała	2014	W00149c	MF170685						
<i>Bembidion decorum</i>	Slovakia	Rokytov	2017	W00149d	MF170684						
<i>Bembidion decorum</i>	Bulgaria	Pawel Banja	2015	W00149f	MF170683						
<i>Bembidion modestum</i>	Romania	Moldova	2016	W00257a	MF170689						
<i>Bembidion modestum</i>	Czechia	Kopytov	2016	W00257b	MF170688						
<i>Bembidion modestum</i>	Poland	Fałkowice	2017	W00257c	MF170686						
<i>Bembidion punctulatum</i>	Poland	Domosławice	2017	W00256a	MF170693		MF170749	MF170763	MF170777	MF170805	MF170791
<i>Bembidion punctulatum</i>	Romania	Moldova	2016	W00256b	MF170695		MF170751	MF170765	MF170779	MF170807	MF170793
<i>Bembidion punctulatum</i>	Czechia	Kopytov	2016	W00256c	MF170694		MF170750	MF170764	MF170778	MF170806	MF170792
<i>Bembidion punctulatum</i>	Poland	Fałkowice	2017	W00256d	MF170691		MF170748	MF170762	MF170776	MF170804	MF170790
<i>Bembidion varicolor</i>	Poland	Domosławice	2017	W00150a	MF170679		+	MF170743	MF170757	MF170771	MF170799
<i>Bembidion varicolor</i>	Romania	Moldova	2016	W00150b	MF170681		+	MF170746	MF170760	MF170774	MF170788
<i>Bembidion varicolor</i>	Romania	Moldova	2016	W00150c				MF170747	MF170761	MF170775	MF170789
<i>Bembidion varicolor</i>	Poland	Fałkowice	2017	W00150d	MF170678			MF170742	MF170756	MF170770	MF170784
<i>Bembidion varicolor</i>	Slovakia	Andrejovka	2017	W00150e	MF170680			MF170744	MF170758	MF170772	MF170800
<i>Bembidion varicolor</i>	Slovakia	Topľa river valley	2017	W00150f				MF170745	MF170759	MF170773	MF170787
<i>Bembidion varium</i>	Poland	Lipnica Wielka	2017	W00258a	MH020423	MG987855	MG987913	MG987662	MG987728	MG987679	MG988047
<i>Bembidion varium</i>	Romania	Moldova	2016	W00258b	MH020424	MG987856	MG987915	MG987663	MG987730	MG987680	MG988045
<i>Bembidion varium</i>	Bulgaria	Pawel Banja	2015	W00258c	MH020425	MG987907	MG987914	MG987664	MG987729	+	MG988046
<i>Bitoma crenata</i>	Poland	Szyk	2014	W00134a	MH020302						
<i>Bitoma crenata</i>	Poland	Szyk	2014	W00134b	MH020303						
<i>Bitoma crenata</i>	Poland	Łążek	2017	W00134c							
<i>Blitopertha lineolata</i>	Bulgaria	Anevo	2015	W00116a	MH115532						
<i>Blitopertha lineolata</i>	Bulgaria	Anevo	2015	W00116b						+	
<i>Blitopertha lineolata</i>	Bulgaria	Pawel Banja	2015	W00116c							
<i>Bostrichus capucinus</i>	Austria	Füllersdorf	2016	W00072a	MH115570						
<i>Bostrichus capucinus</i>	Poland	Grajów	2017	W00072b							
<i>Brachyleptura maculicornis</i>	Poland	Rogalin	2016	W00083a	<u>KU25569J</u>						
<i>Brachyleptura maculicornis</i>	Poland	Chrusty	2015	W00083b							
<i>Brosicus cephalotes</i>	Poland	Nowe Sady	2014	W00222a	MH020419						
<i>Brosicus cephalotes</i>	Poland	Odolion ad Ciechocinek	2016	W00222b	MH020420						
<i>Bruchidius cf. varius</i>	Poland	Kędzierzyn-Koźle	2014	W00037a	MH020271						
<i>Bruchidius cf. varius</i>	Poland	Kędzierzyn-Koźle	2014	W00037b							
<i>Bruchidius cf. varius</i>	Poland	Pawel Banja	2015	W00037c							
<i>Bruchus affinis</i>	Poland	Sromowce Wyżne	2014	W00019a	MH020262						
<i>Bruchus affinis</i>	Poland	Radzionków	2014	W00019b	MH020263						
<i>Bruchus affinis</i>	Poland	Ligota Dolna	2015	W00019c							
<i>Bruchus atomarius</i>	Poland	Wdżar Mt.	2014	W00020a	MH319816						
<i>Bruchus atomarius</i>	Poland	Zdzieszowice	2015	W00020b						+	
<i>Bruchus atomarius</i>	Poland	Jarmuta Mt.	2014	W00020c						+	
<i>Bruchus brachialis</i>	Poland	Nowa Wieś	2014	W00038a	MH020270						
<i>Bruchus brachialis</i>	Poland	Kędzierzyn-Koźle	2014	W00038b							
<i>Bruchus brachialis</i>	Poland	Kędzierzyn-Koźle	2014	W00038c							
<i>Bruchus loti</i>	Poland	Sromowce Wyżne	2014	W00021a	MH020267						
<i>Bruchus loti</i>	Poland	Ligota Dolna	2015	W00021b	MH020268						
<i>Bruchus loti</i>	Bulgaria	Balkanec	2015	W00021c	MH020269						
<i>Bruchus viciae</i>	Bulgaria	Anevo	2015	W00022a	MH020264						
<i>Bruchus viciae</i>	Bulgaria	Twyrdica	2015	W00022b	MH020265						
<i>Bruchus viciae</i>	Bulgaria	Pawel Banja	2015	W00022c	MH020266						
<i>Caccobius schreberi</i>	Romania	Tanacu	2016	W00094a							
<i>Caccobius schreberi</i>	Poland	Wielopole	2015	W00094b	MH020304						
<i>Calathus fuscipes</i>	Romania	Moldova	2016	W00213a	MH020379						
<i>Calathus fuscipes</i>	Poland	Żerostawice	2016	W00213b	MH020380						
<i>Calathus fuscipes</i>	Bulgaria	Karlovo	2015	W00213c	MH020381						
<i>Calvia quatuordecimpunctata</i>	Austria	Porrau	2015	W00181a							
<i>Calvia quatuordecimpunctata</i>	Poland	Białowieża Forest	2014	W00181b	MH115503						
<i>Cantharis livida</i>	Slovakia	Turydica	2016	W00047a	MH115526						
<i>Cantharis livida</i>	Romania	Brezoi	2015	W00047b						+	
<i>Cantharis nigricans</i>	Poland	Jarmuta Mt.	2014	W00043a	MH115525						
<i>Cantharis nigricans</i>	Poland	Kędzierzyn-Koźle	2014	W00043b							
<i>Cantharis nigricans</i>	Poland	Krempachy	2014	W00043c							
<i>Cantharis rustica</i>	Poland	Dursztyn	2014	W00046a	MH115524						
<i>Cantharis rustica</i>	Romania	Brezoi	2015	W00046b	MH115523						
<i>Carabus cancellatus</i>	Poland	Sulów	2017	W00145a	MH020417						
<i>Carabus cancellatus</i>	Poland	Zamość	2016	W00145b	MH020418						
<i>Carabus coriaceus</i>	Poland	Chełm	2015	W00207a	MH020374						
<i>Carabus coriaceus</i>	Poland	Chełm	2015	W00207b							
<i>Carabus coriaceus</i>	Poland	Buczków	2014	W00207c	MH020375						
<i>Carabus coriaceus</i>	Poland	Białowieża Forest	2014	W00207d							
<i>Carabus glabratus</i>	Slovakia	Bratislava	2016	W00209a	MH020371						
<i>Carabus glabratus</i>	Poland	Walsza river valley	2017	W00209b	MH020372	MG987874					
<i>Carabus glabratus</i>	Poland	Białowieża Forest	2014	W00209c							
<i>Carabus granulatus</i>	Poland	Zamość	2016	W00144a	MH020376						
<i>Carabus granulatus</i>	Poland	Graziowa	2017	W00144b	MH020377						
<i>Carabus granulatus</i>	Poland	Białowieża Forest	2014	W00144c							
<i>Carabus granulatus</i>	Poland	Lublin	2015	W00144d							

<i>Eutrichapion melancholicum</i>	Poland	Przemysł	2014	W00308b	MH218860														
<i>Eutrichapion viciae</i>	Poland	Korzecko	2015	W00309a	MH218857														
<i>Eutrichapion viciae</i>	Poland	Korzecko	2015	W00309b	MH218858														
<i>Exochomus quadripustulatus</i>	Slovakia	Sampor	2017	W00169a	MH115507														
<i>Exochomus quadripustulatus</i>	Slovakia	Studienka	2016	W00169b	MH115508														
<i>Exochomus quadripustulatus</i>	Slovakia	Pernek	2016	W00169c															
<i>Exochomus quadripustulatus</i>	Poland	Miszek	2016	W00169d	+														
<i>Galeruca tanacetii</i>	Bulgaria	Karlovo	2015	W00041a	MH020463														
<i>Galeruca tanacetii</i>	Bulgaria	Karlovo	2015	W00041b															
<i>Galeruca tanacetii</i>	Bulgaria	Paweł Banja	2015	W00041c															
<i>Galerucella tenella</i>	Poland	Wdżar Mt.	2014	W00042a	MH020460														
<i>Galerucella tenella</i>	Poland	Łąpsze Niżne	2014	W00042b															
<i>Galerucella tenella</i>	Poland	Dursztyn	2014	W00042c															
<i>Gnaptor spinimanus</i>	Bulgaria	Karnare	2015	W00068a	<u>KX388742</u>														
<i>Gnaptor spinimanus</i>	Romania	Didesti	2016	W00068b															
<i>Gnaptor spinimanus</i>	Romania	Tanacu	2016	W00068c															
<i>Gnaptor spinimanus</i>	Bulgaria	Anevo	2015	W00068d															
<i>Harpalus affinis</i>	Poland	Mogielica Mt.	2015	W00216a															
<i>Harpalus affinis</i>	Romania	Páscoaia	2016	W00216b															
<i>Harpalus rufipes</i>	Poland	Chełm	2015	W00199a	MH020398														
<i>Harpalus rufipes</i>	Poland	Sulów	2017	W00199b	MH020399														
<i>Harpalus rufipes</i>	Poland	Okale	2015	W00199c	+														
<i>Hippodamia variegata</i>	Slovakia	Horná Mčiňá	2016	W00175a	MH115504														
<i>Hippodamia variegata</i>	Slovakia	Horná Mčiňá	2016	W00175b															
<i>Hylobius abietis</i>	Bulgaria	Paweł Banja	2015	W00294a	MH115471														
<i>Hylobius abietis</i>	Bulgaria	Elena	2015	W00294b		MG987817	MG987928	MG987647	MG987745										MG987971
<i>Hylobius abietis</i>	Romania	Făgăraș Mts.	2015	W00294c	+														
<i>Hylotrupes bajulus</i>	Poland	Białowieża Forest	2016	W00264a	MH020455														
<i>Hylotrupes bajulus</i>	Poland	Białowieża Forest	2016	W00264b	MH020456														
<i>Ips typographus</i>	Poland	Białowieża Forest	2016	W00114a	MH115481														
<i>Ips typographus</i>	Poland	Białowieża Forest	2016	W00114b	+														
<i>Ips typographus</i>	Slovakia	Cisty	2017	W00114c															
<i>Kateretes pedicularius</i>	Poland	Kolonowskie	2015	W00058a	MH020488														
<i>Kateretes pedicularius</i>	Poland	Nowa Wieś Królówka	2016	W00058b	MH020489														
<i>Kateretes pedicularius</i>	Poland	Nowa Wieś Królówka	2016	W00058c															
<i>Lagria hirta</i>	Slovakia	Kremnicke Vrchy	2016	W00156a	MH115560	MG987875													
<i>Lagria hirta</i>	Poland	Należczów	2015	W00156b															
<i>Lagria hirta</i>	Poland	Białowieża Forest	2016	W00156c		MG987876													
<i>Litargus connexus</i>	Poland	Kolonowskie	2015	W00288a	MH020363														
<i>Lixus filiformis</i>	Bulgaria	Stara Planina Mts.	2015	W00293a															
<i>Lixus filiformis</i>	Bulgaria	Anevo	2015	W00293b	MH115475														
<i>Lixus filiformis</i>	Bulgaria	Anevo	2015	W00293c															
<i>Lochmaea caprea</i>	Poland	Niedzica	2014	W00051a	+														
<i>Lochmaea caprea</i>	Romania	Tau Bistrica	2015	W00051b															
<i>Lochmaea caprea</i>	Croatia	Pomena	2016	W00051c															
<i>Longitarsus exsoletus</i>	Poland	Szymiszów	2014	W00031a	MH020464														
<i>Longitarsus exsoletus</i>	Poland	Krempachy	2014	W00031b															
<i>Longitarsus exsoletus</i>	Poland	Cisowa Skala	2014	W00031c															
<i>Longitarsus nasturtii</i>	Poland	Krempachy	2014	W00032a															
<i>Longitarsus nasturtii</i>	Poland	Ligota Dolna	2015	W00032b															
<i>Longitarsus nasturtii</i>	Poland	Łąpsze Niżne	2014	W00032c	MH271196														
<i>Loricera pilicornis</i>	Poland	Lublin	2015	W00202a	MH020437														
<i>Loricera pilicornis</i>	Poland	Lublin	2015	W00202b	MH020438														
<i>Loricera pilicornis</i>	Poland	Niebrzegów	2015	W00202c	MH020439														
<i>Luperus flavipes</i>	Poland	Cisowa Skala	2014	W00033a	MH020461	MG987836	MG987957	MG987651	MG987757	MG987707	MG988020								
<i>Luperus flavipes</i>	Poland	Szymiszów	2014	W00033b		MG987837	MG987958	MG987652	MG987758	MG987708	MG988021								
<i>Luperus flavipes</i>	Poland	Krempachy	2014	W00033c		MG987840			MG987768		MG988015								
<i>Luperus luperus</i>	Poland	Wdżar Mt.	2014	W00034a	MH020462	MG987838	MG987959		MG987759	MG987709	MG988018								
<i>Luperus luperus</i>	Poland	Krempachy	2014	W00034b		MG987839													
<i>Luperus luperus</i>	Poland	Ligota Dolna	2015	W00034c															
<i>Lygistopterus sanguineus</i>	Poland	Rogalin	2016	W00137a	MH115527														
<i>Lygistopterus sanguineus</i>	Poland	Białowieża Forest	2016	W00137b	MH115528														
<i>Lygistopterus sanguineus</i>	Poland	Knyszyn Forest	2016	W00137c															
<i>Mecinus pascuorum</i>	Poland	Murownia	2017	W00302a	+														
<i>Mecinus pascuorum</i>	Poland	Murownia	2017	W00302b	+														
<i>Mecinus pascuorum</i>	Bulgaria	Anevo	2015	W00302c															
<i>Melolontha melolontha</i>	Romania	Brezoi	2015	W00060a	MH115534														
<i>Melolontha melolontha</i>	Romania	Brezoi	2015	W00060b															
<i>Melolontha melolontha</i>	Romania	Brezoi	2015	W00060c	+														
<i>Metacantharis discoidea</i>	Poland	Dursztyn	2014	W00290a	+														
<i>Metacantharis discoidea</i>	Poland	Dursztyn	2014	W00290b	+														
<i>Metacantharis discoidea</i>	Poland	Dursztyn	2014	W00290c															
<i>Monochamus galloprovincialis</i>	Poland	Kampinos	2015	W00316a	MH271199														
<i>Monochamus galloprovincialis</i>	Poland	Sieraków	2016	W00316b	MH271200														
<i>Monochamus sartor sartor</i>	Poland	Komańcza	2015	W00314a	MF371185	MG987822	MF405511	MF405524	MF405536	MF405530	MF405543								
<i>Monochamus sartor sartor</i>	Poland	Baligród	2015	W00314b	MF371196		MF405510	MF405525	MF405537	MF405531	MF405544								
<i>Monochamus sartor sartor</i>	Poland	Pieniny Mts	2015	W00314c	MF371201		MF405512	MF405526	MF405538	MF405532	MF405545								
<i>Monochamus sartor urussovii</i>	Poland	Białowieża Forest	2016	W00313a	MF327411	MG987827	MF405508	MF405521	MF405533	MF405527	MF405540								
<i>Monochamus sartor urussovii</i>	Poland	Knyszyn Forest	2015	W00313b	MF327421		MF405509	MF405522	MF405534	MF405528	MF405541								
<i>Monochamus sartor urussovii</i>	Poland	Augustów Forest	2016	W00313c	MF327418		MF405507	MF405523	MF405535	MF405529	MF405542								
<i>Monochamus sutor</i>	Poland	Borecka Forest	2015	W00315a	MH271201														
<i>Monochamus sutor</i>	Poland	Borecka Forest	2015	W00315b	MH271202														
<i>Mordella brachyura</i>	Poland	Chrusty	2015	W00108a	MH115567														
<i>Mordella brachyura</i>	Poland	Chrusty	2015	W															

<i>Tropinota hirta</i>	Poland	Tynieć	2016	W00105a	+	
<i>Tropinota hirta</i>	Bulgaria	Anevo	2015	W00105b	MH020443	
<i>Tropinota hirta</i>	Bulgaria	Anevo	2015	W00105c		
<i>Trypocopris vernalis</i>	Poland	Białowieża Forest	2015	W00069a	+	
<i>Trypocopris vernalis</i>	Bulgaria	Karnare	2015	W00069b		
<i>Trypocopris vernalis</i>	Austria	Edelstal	2015	W00069c		
<i>Trypodendron lineatum</i>	Poland	Łapsze Niżne	2014	W00112a	MH115574	
<i>Trypodendron lineatum</i>	Poland	Łapsze Niżne	2014	W00112b	+	
<i>Trypodendron lineatum</i>	Poland	Łapsze Niżne	2014	W00112c		
<i>Tytthaspis sedecimpunctata</i>	Slovakia	Sampor	2017	W00176a	MH020507	
<i>Uleiota planata</i>	Poland	Szyk	2014	W00133a	MH115565	
<i>Uleiota planata</i>	Poland	Szyk	2014	W00133b	+	
<i>Uleiota planata</i>	Poland	Ciechocinek	2016	W00133c	+	
<i>Uloma culinaris</i>	Poland	Rogalin	2014	W00154a	MH020548	MG987810
<i>Uloma culinaris</i>	Poland	Ispina	2014	W00154b		MG987811
<i>Uloma culinaris</i>	Poland	Ispina	2014	W00154c	MH020549	MG987812
<i>Valgus hemipterus</i>	Poland	Alwernia	2015	W00076a	+	
<i>Valgus hemipterus</i>	Bulgaria	Brezovo Mt.	2015	W00076b	MH020440	
<i>Valgus hemipterus</i>	Bulgaria	Gintsi	2015	W00076c	MH020441	

Supplementary Table S5. Taxonomy and trait characteristics and *Wolbachia* infection status of examined beetle species.

Phyto – phytophagous, Myceto – mycetophagous, Pred – predators, Sapro – saprophagous, Wood – Cambioxylophagous, Forest – forest-dwellers, Open – open land-dwellers, Ubiq – ubiquitous, Copro – coprophilous, Epig – epigeic, Herb – herbophilous, Hydro – hydrophilous, Fungi – mycetophilous, Necro – necrophilous, Xylo – cambioxylophilous, Cont – continental, Medit – mediterranean, Mount – mountainous, Temp – temperate, Fragn – fragmented, Wide –widespread, Neut – neutral temperature, Warm – warm temperature, Parth – parthenogenetic, Sex – (bi)sexual, Large – large size, Medium – medium size, Small – small size, Mobile – mobile, Seden – sedentary.

No.	species	family	superfamily	infraorder	suborder	trophism	habitat preferences	micro-habitats	distribution	range	thermal preferences	reproduction mode	body size	mobility	infection	supergroup A	supergroup B
1	<i>Abax parallelepipedus</i>	Carabidae	Caraboidea	Carabiformia	Adephaga	Pred	Forest	Epig	Temp	Wide	Neut	Sex	Large	Mobil	0	0	0
2	<i>Abax parallelus</i>	Carabidae	Caraboidea	Carabiformia	Adephaga	Pred	Forest	Epig	Temp	Wide	Neut	Sex	Med	Mobil	1	1	0
3	<i>Adalia bipunctata</i>	Coccinellidae	Cucujoidea	Cucujiformia	Polyphaga	Pred	Ubiq	Herb	Temp	Wide	Neut	Sex	Med	Mobil	0	0	0
4	<i>Agapanthia villosoviridescens</i>	Cerambycidae	Chrysomeloidea	Cucujiformia	Polyphaga	Phyto	Ubiq	Herb	Temp	Wide	Neut	Sex	Small	Mobil	0	0	0
5	<i>Agonum marginatum</i>	Carabidae	Caraboidea	Carabiformia	Adephaga	Pred	Open	Hydro	Temp	Wide	Neut	Sex	Med	Mobil	1	1	1
6	<i>Agrilus derasofasciatus</i>	Buprestidae	Buprestoidea	Elateriformia	Polyphaga	Wood	Forest	Xylo	Medit	Wide	Warm	Sex	Small	Mobil	0	0	0
7	<i>Agrilus suvorovi</i>	Buprestidae	Buprestoidea	Elateriformia	Polyphaga	Wood	Forest	Xylo	Temp	Wide	Neut	Sex	Med	Mobil	0	0	0
8	<i>Agrypnus murinus</i>	Elateridae	Elateroidea	Elateriformia	Polyphaga	Pred	Open	Epig	Temp	Wide	Neut	Sex	Med	Mobil	0	0	0
9	<i>Alosterna tabacicolor</i>	Cerambycidae	Chrysomeloidea	Cucujiformia	Polyphaga	Wood	Forest	Xylo	Temp	Wide	Neut	Sex	Med	Mobil	0	0	0
10	<i>Altica oleracea</i>	Chrysomelidae	Chrysomeloidea	Cucujiformia	Polyphaga	Phyto	Ubiq	Herb	Temp	Wide	Neut	Sex	Small	Mobil	0	0	0
11	<i>Amara similata</i>	Carabidae	Caraboidea	Carabiformia	Adephaga	Pred	Open	Epig	Temp	Wide	Warm	Sex	Med	Mobil	1	1	0
12	<i>Amphimallon solstitialis</i>	Scarabaeidae	Scarabaeoidea	Scarabaeiformia	Polyphaga	Phyto	Ubiq	Herb	Temp	Wide	Neut	Sex	Med	Mobil	0	0	0
13	<i>Anaspis brunnipes</i>	Scraptiidae	Tenebrionoidea	Cucujiformia	Polyphaga	Wood	Open	Xylo	Temp	Wide	Warm	Sex	Small	Mobil	1	1	0
14	<i>Anaspis frontalis</i>	Scraptiidae	Tenebrionoidea	Cucujiformia	Polyphaga	Wood	Forest	Xylo	Temp	Wide	Neut	Sex	Small	Mobil	1	1	0
15	<i>Anastrangalia reyi</i>	Cerambycidae	Chrysomeloidea	Cucujiformia	Polyphaga	Wood	Forest	Xylo	Temp	Wide	Neut	Sex	Med	Mobil	1	1	0
16	<i>Anastrangalia sanguinolenta</i>	Cerambycidae	Chrysomeloidea	Cucujiformia	Polyphaga	Wood	Forest	Xylo	Temp	Wide	Neut	Sex	Med	Mobil	0	0	0
17	<i>Anatis ocellata</i>	Coccinellidae	Cucujoidea	Cucujiformia	Polyphaga	Pred	Forest	Herb	Temp	Wide	Neut	Sex	Med	Mobil	0	0	0
18	<i>Anomala dubia</i>	Scarabaeidae	Scarabaeoidea	Scarabaeiformia	Polyphaga	Phyto	Ubiq	Herb	Temp	Wide	Neut	Sex	Med	Mobil	0	0	0
19	<i>Anoplodera sexguttata</i>	Cerambycidae	Chrysomeloidea	Cucujiformia	Polyphaga	Wood	Forest	Xylo	Temp	Fragn	Neut	Sex	Med	Mobil	0	0	0
20	<i>Anoplotrupes stercorosus</i>	Geotrupidae	Scarabaeoidea	Scarabaeiformia	Polyphaga	Sapro	Forest	Epig	Temp	Wide	Neut	Sex	Med	Mobil	0	0	0
21	<i>Anostirus castaneus</i>	Elateridae	Elateroidea	Elateriformia	Polyphaga	Pred	Forest	Xylo	Temp	Wide	Neut	Sex	Med	Mobil	0	0	0

22	<i>Anthaxia nitidula</i>	Buprestidae	Buprestoidea	Elateriformia	Polyphaga	Wood	Forest	Xylo	Medit	Fragm	Warm	Sex	Med	Mobil	0	0	0
23	<i>Anthaxia quadripunctata</i>	Buprestidae	Buprestoidea	Elateriformia	Polyphaga	Wood	Forest	Xylo	Temp	Wide	Neut	Sex	Med	Mobil	0	0	0
24	<i>Anthonomus rubi</i>	Curculionidae	Curculionoidea	Cucujiformia	Polyphaga	Phyto	Ubiq	Herb	Temp	Wide	Neut	Sex	Small	Mobil	1	1	1
25	<i>Aphodius ater</i>	Scarabaeidae	Scarabaeoidea	Scarabaeiformia	Polyphaga	Sapro	Open	Copro	Temp	Wide	Neut	Sex	Med	Mobil	0	0	1
26	<i>Aphodius depressus</i>	Scarabaeidae	Scarabaeoidea	Scarabaeiformia	Polyphaga	Sapro	Open	Copro	Temp	Wide	Neut	Sex	Med	Mobil	0	0	0
27	<i>Aphodius erraticus</i>	Scarabaeidae	Scarabaeoidea	Scarabaeiformia	Polyphaga	Sapro	Open	Copro	Temp	Wide	Neut	Sex	Med	Mobil	0	0	0
28	<i>Aphodius fossor</i>	Scarabaeidae	Scarabaeoidea	Scarabaeiformia	Polyphaga	Sapro	Ubiq	Copro	Temp	Wide	Neut	Sex	Med	Mobil	0	0	0
29	<i>Aphodius granarius</i>	Scarabaeidae	Scarabaeoidea	Scarabaeiformia	Polyphaga	Sapro	Open	Copro	Temp	Wide	Neut	Sex	Med	Mobil	1	0	1
30	<i>Aphodius haemorrhoidalis</i>	Scarabaeidae	Scarabaeoidea	Scarabaeiformia	Polyphaga	Sapro	Open	Copro	Temp	Wide	Neut	Sex	Med	Mobil	1	0	1
31	<i>Aphodius luridus</i>	Scarabaeidae	Scarabaeoidea	Scarabaeiformia	Polyphaga	Sapro	Open	Copro	Temp	Wide	Warm	Sex	Med	Mobil	0	0	0
32	<i>Aphodius pedellus</i>	Scarabaeidae	Scarabaeoidea	Scarabaeiformia	Polyphaga	Sapro	Open	Copro	Temp	Wide	Neut	Sex	Med	Mobil	0	0	0
33	<i>Aphodius pusillus</i>	Scarabaeidae	Scarabaeoidea	Scarabaeiformia	Polyphaga	Sapro	Open	Copro	Temp	Wide	Neut	Sex	Med	Mobil	0	0	0
34	<i>Aphodius scrutator</i>	Scarabaeidae	Scarabaeoidea	Scarabaeiformia	Polyphaga	Sapro	Open	Copro	Cont	Fragm	Warm	Sex	Med	Mobil	0	0	0
35	<i>Aphodius sphaecelatus</i>	Scarabaeidae	Scarabaeoidea	Scarabaeiformia	Polyphaga	Sapro	Open	Copro	Temp	Wide	Neut	Sex	Med	Mobil	0	0	0
36	<i>Aphodius sticticus</i>	Scarabaeidae	Scarabaeoidea	Scarabaeiformia	Polyphaga	Sapro	Forest	Copro	Temp	Wide	Neut	Sex	Med	Mobil	1	0	1
37	<i>Aphthona venustula</i>	Chrysomelidae	Chrysomeloidea	Cucujiformia	Polyphaga	Phyto	Open	Herb	Medit	Fragm	Warm	Sex	Small	Mobil	1	0	1
38	<i>Arhopalus rusticus</i>	Cerambycidae	Chrysomeloidea	Cucujiformia	Polyphaga	Wood	Forest	Xylo	Temp	Wide	Neut	Sex	Large	Mobil	1	1	0
39	<i>Aromia moschata</i>	Cerambycidae	Chrysomeloidea	Cucujiformia	Polyphaga	Wood	Forest	Xylo	Temp	Wide	Neut	Sex	Med	Mobil	0	0	0
40	<i>Athous subfuscus</i>	Elateridae	Elateroidea	Elateriformia	Polyphaga	Pred	Ubiq	Epig	Temp	Wide	Neut	Sex	Med	Mobil	0	0	0
41	<i>Attagenus pelli</i>	Dermestidae	Bostrichoidea	Bostrichiformia	Polyphaga	Sapro	Ubiq	Necro	Temp	Wide	Neut	Sex	Med	Mobil	0	0	0
42	<i>Batophila rubi</i>	Chrysomelidae	Chrysomeloidea	Cucujiformia	Polyphaga	Phyto	Ubiq	Herb	Temp	Wide	Neut	Sex	Small	Mobil	1	1	0
43	<i>Bembidion articulatum</i>	Carabidae	Caraboidea	Carabiformia	Adephaga	Pred	Open	Hydro	Temp	Wide	Neut	Sex	Med	Mobil	0	0	0
44	<i>Bembidion decorum</i>	Carabidae	Caraboidea	Carabiformia	Adephaga	Pred	Open	Hydro	Mount	Fragm	Neut	Sex	Med	Mobil	0	0	0
45	<i>Bembidion modestum</i>	Carabidae	Caraboidea	Carabiformia	Adephaga	Pred	Open	Hydro	Mount	Fragm	Neut	Sex	Med	Mobil	0	0	0
46	<i>Bembidion punctulatum</i>	Carabidae	Caraboidea	Carabiformia	Adephaga	Pred	Open	Hydro	Temp	Wide	Neut	Sex	Med	Mobil	1	0	1
47	<i>Bembidion varicolor</i>	Carabidae	Caraboidea	Carabiformia	Adephaga	Pred	Open	Hydro	Mount	Fragm	Neut	Sex	Med	Mobil	1	1	1
48	<i>Bembidion varium</i>	Carabidae	Caraboidea	Carabiformia	Adephaga	Pred	Open	Hydro	Temp	Wide	Neut	Sex	Med	Mobil	1	0	1
49	<i>Bitoma crenata</i>	Zopheridae	Tenebrionoidea	Cucujiformia	Polyphaga	Sapro	Forest	Xylo	Temp	Wide	Neut	Sex	Small	Seden	0	0	0
50	<i>Blitopertha lineolata</i>	Scarabaeidae	Scarabaeoidea	Scarabaeiformia	Polyphaga	Phyto	Open	Herb	Cont	Fragm	Warm	Sex	Med	Mobil	0	0	0
51	<i>Bostrichus capucinus</i>	Bostrichidae	Bostrichoidea	Bostrichiformia	Polyphaga	Wood	Forest	Xylo	Temp	Wide	Neut	Sex	Med	Mobil	0	0	0
52	<i>Brachyleptura maculicornis</i>	Cerambycidae	Chrysomeloidea	Cucujiformia	Polyphaga	Wood	Forest	Xylo	Temp	Wide	Neut	Sex	Med	Mobil	0	0	0
53	<i>Broscus cephalotes</i>	Carabidae	Caraboidea	Carabiformia	Adephaga	Pred	Open	Epig	Temp	Wide	Neut	Sex	Med	Mobil	0	0	0
54	<i>Bruchidius cf. varius</i>	Chrysomelidae	Chrysomeloidea	Cucujiformia	Polyphaga	Phyto	Open	Herb	Medit	Wide	Warm	Sex	Small	Mobil	0	0	0
55	<i>Bruchus affinis</i>	Chrysomelidae	Chrysomeloidea	Cucujiformia	Polyphaga	Phyto	Open	Herb	Cont	Wide	Warm	Sex	Small	Mobil	0	0	0
56	<i>Bruchus atomarius</i>	Chrysomelidae	Chrysomeloidea	Cucujiformia	Polyphaga	Phyto	Open	Herb	Temp	Wide	Neut	Sex	Small	Mobil	0	0	0

57	<i>Bruchus brachialis</i>	Chrysomelidae	Chrysomeloidea	Cucujiformia	Polyphaga	Phyto	Open	Herb	Medit	Fragm	Warm	Sex	Small	Mobil	0	0	0
58	<i>Bruchus loti</i>	Chrysomelidae	Chrysomeloidea	Cucujiformia	Polyphaga	Phyto	Open	Herb	Cont	Wide	Neut	Sex	Small	Mobil	0	0	0
59	<i>Bruchus viciae</i>	Chrysomelidae	Chrysomeloidea	Cucujiformia	Polyphaga	Phyto	Open	Herb	Medit	Wide	Warm	Sex	Small	Mobil	0	0	0
60	<i>Caccobius schreberi</i>	Scarabaeidae	Scarabaeoidea	Scarabaeiformia	Polyphaga	Sapro	Open	Copro	Temp	Fragm	Warm	Sex	Med	Mobil	0	0	0
61	<i>Calathus fuscipes</i>	Carabidae	Caraboidea	Carabiformia	Adephaga	Pred	Ubiq	Epig	Temp	Wide	Neut	Sex	Med	Mobil	0	0	0
62	<i>Calvia quatuordecimpunctata</i>	Coccinellidae	Cucujoidea	Cucujiformia	Polyphaga	Pred	Forest	Herb	Temp	Wide	Neut	Sex	Med	Mobil	0	0	0
63	<i>Cantharis livida</i>	Cantharidae	Elateroidea	Elateriformia	Polyphaga	Pred	Ubiq	Herb	Temp	Wide	Neut	Sex	Med	Mobil	0	0	0
64	<i>Cantharis nigricans</i>	Cantharidae	Elateroidea	Elateriformia	Polyphaga	Pred	Forest	Herb	Temp	Wide	Neut	Sex	Med	Mobil	0	0	0
65	<i>Cantharis rustica</i>	Cantharidae	Elateroidea	Elateriformia	Polyphaga	Pred	Ubiq	Herb	Temp	Wide	Neut	Sex	Med	Mobil	0	0	0
66	<i>Carabus cancellatus</i>	Carabidae	Caraboidea	Carabiformia	Adephaga	Pred	Open	Epig	Temp	Wide	Neut	Sex	Large	Seden	0	0	0
67	<i>Carabus coriaceus</i>	Carabidae	Caraboidea	Carabiformia	Adephaga	Pred	Forest	Epig	Temp	Wide	Neut	Sex	Large	Seden	0	0	0
68	<i>Carabus glabratus</i>	Carabidae	Caraboidea	Carabiformia	Adephaga	Pred	Forest	Epig	Temp	Wide	Neut	Sex	Large	Seden	1	0	1
69	<i>Carabus granulatus</i>	Carabidae	Caraboidea	Carabiformia	Adephaga	Pred	Forest	Epig	Temp	Wide	Neut	Sex	Large	Seden	0	0	0
70	<i>Carabus hortensis</i>	Carabidae	Caraboidea	Carabiformia	Adephaga	Pred	Forest	Epig	Temp	Wide	Neut	Sex	Large	Seden	0	0	0
71	<i>Carabus nemoralis</i>	Carabidae	Caraboidea	Carabiformia	Adephaga	Pred	Forest	Epig	Temp	Wide	Neut	Sex	Large	Seden	0	0	0
72	<i>Carabus violaceus</i>	Carabidae	Caraboidea	Carabiformia	Adephaga	Pred	Forest	Epig	Temp	Wide	Neut	Sex	Large	Seden	0	0	0
73	<i>Cassida viridis</i>	Chrysomelidae	Chrysomeloidea	Cucujiformia	Polyphaga	Phyto	Open	Herb	Temp	Wide	Neut	Sex	Small	Mobil	1	1	0
74	<i>Catapion jaffense</i>	Apionidae	Curculionoidea	Cucujiformia	Polyphaga	Phyto	Open	Herb	Temp	Wide	Neut	Sex	Small	Mobil	1	1	1
75	<i>Catapion koestlini</i>	Apionidae	Curculionoidea	Cucujiformia	Polyphaga	Phyto	Open	Herb	Temp	Fragm	Neut	Sex	Small	Mobil	0	0	0
76	<i>Catapion meieri</i>	Apionidae	Curculionoidea	Cucujiformia	Polyphaga	Phyto	Open	Herb	Temp	Wide	Neut	Sex	Small	Mobil	1	0	1
77	<i>Catapion pubescens</i>	Apionidae	Curculionoidea	Cucujiformia	Polyphaga	Phyto	Open	Herb	Temp	Wide	Neut	Sex	Small	Mobil	0	0	0
78	<i>Catapion seniculus</i>	Apionidae	Curculionoidea	Cucujiformia	Polyphaga	Phyto	Open	Herb	Temp	Wide	Neut	Sex	Small	Mobil	1	0	1
79	<i>Centricnemus leucogrammus</i>	Curculionidae	Curculionoidea	Cucujiformia	Polyphaga	Phyto	Open	Herb	Cont	Fragm	Warm	Sex	Small	Seden	0	0	0
80	<i>Cetonia aurata</i>	Scarabaeidae	Scarabaeoidea	Scarabaeiformia	Polyphaga	Phyto	Ubiq	Xylo	Temp	Wide	Warm	Sex	Med	Mobil	0	0	0
81	<i>Ceutorhynchus obstructus</i>	Curculionidae	Curculionoidea	Cucujiformia	Polyphaga	Phyto	Open	Herb	Temp	Wide	Neut	Sex	Small	Mobil	1	1	0
82	<i>Ceutorhynchus typhae</i>	Curculionidae	Curculionoidea	Cucujiformia	Polyphaga	Phyto	Ubiq	Herb	Temp	Wide	Neut	Sex	Small	Mobil	1	1	0
83	<i>Cheilotoma musciformis</i>	Chrysomelidae	Chrysomeloidea	Cucujiformia	Polyphaga	Phyto	Open	Herb	Cont	Fragm	Warm	Sex	Small	Mobil	0	0	0
84	<i>Chilocorus renipustulatus</i>	Coccinellidae	Cucujoidea	Cucujiformia	Polyphaga	Pred	Forest	Herb	Temp	Wide	Neut	Sex	Med	Mobil	0	0	0
85	<i>Chlaenius nitidulus</i>	Carabidae	Caraboidea	Carabiformia	Adephaga	Pred	Open	Hydro	Temp	Wide	Neut	Sex	Med	Mobil	0	0	0
86	<i>Chlaenius tibialis</i>	Carabidae	Caraboidea	Carabiformia	Adephaga	Pred	Open	Hydro	Temp	Wide	Neut	Sex	Med	Mobil	0	0	0
87	<i>Chrysanthia geniculata</i>	Oedemeridae	Tenebrionoidea	Cucujiformia	Polyphaga	Wood	Forest	Xylo	Temp	Fragm	Neut	Sex	Med	Mobil	0	0	0
88	<i>Chrysolina herbacea</i>	Chrysomelidae	Chrysomeloidea	Cucujiformia	Polyphaga	Phyto	Open	Herb	Medit	Wide	Neut	Sex	Med	Mobil	1	1	0
89	<i>Chrysolina polita</i>	Chrysomelidae	Chrysomeloidea	Cucujiformia	Polyphaga	Phyto	Open	Herb	Temp	Wide	Neut	Sex	Med	Mobil	0	0	0
90	<i>Chrysolina varians</i>	Chrysomelidae	Chrysomeloidea	Cucujiformia	Polyphaga	Phyto	Open	Herb	Temp	Wide	Neut	Sex	Med	Mobil	0	0	0
91	<i>Cicindela hybrida</i>	Carabidae	Caraboidea	Carabiformia	Adephaga	Pred	Open	Epig	Temp	Wide	Warm	Sex	Med	Mobil	0	0	0

92	<i>Clerus mutillarius</i>	Cleridae	Clerioidea	Cucujiformia	Polyphaga	Pred	Ubiq	Xylo	Medit	Wide	Warm	Sex	Med	Mobil	0	0	0
93	<i>Clivina collaris</i>	Carabidae	Caraboidea	Carabiformia	Adephaga	Pred	Open	Hydro	Temp	Wide	Neut	Sex	Med	Mobil	0	0	0
94	<i>Coccinella quinquepunctata</i>	Coccinellidae	Cucujoidea	Cucujiformia	Polyphaga	Pred	Ubiq	Herb	Temp	Wide	Neut	Sex	Med	Mobil	0	0	0
95	<i>Coccinella septempunctata</i>	Coccinellidae	Cucujoidea	Cucujiformia	Polyphaga	Pred	Ubiq	Herb	Temp	Wide	Neut	Sex	Med	Mobil	0	0	0
96	<i>Coccinula quatuordecimpustulata</i>	Coccinellidae	Cucujoidea	Cucujiformia	Polyphaga	Pred	Open	Herb	Temp	Wide	Warm	Sex	Small	Mobil	1	1	0
97	<i>Combocerus glaber</i>	Erotylidae	Cucujoidea	Cucujiformia	Polyphaga	Myceto	Forest	Fungi	Temp	Wide	Neut	Sex	Small	Mobil	1	0	1
98	<i>Coraebus elatus</i>	Buprestidae	Buprestoidea	Elateriformia	Polyphaga	Phyto	Open	Herb	Cont	Fragm	Warm	Sex	Small	Mobil	0	0	0
99	<i>Crepidodera aurata</i>	Chrysomelidae	Chrysomeloidea	Cucujiformia	Polyphaga	Phyto	Forest	Herb	Temp	Wide	Neut	Sex	Small	Mobil	1	1	0
100	<i>Crioceris asparagi</i>	Chrysomelidae	Chrysomeloidea	Cucujiformia	Polyphaga	Phyto	Open	Herb	Temp	Wide	Neut	Sex	Med	Mobil	0	0	0
101	<i>Crioceris quatuordecimpunctata</i>	Chrysomelidae	Chrysomeloidea	Cucujiformia	Polyphaga	Phyto	Open	Herb	Cont	Fragm	Warm	Sex	Med	Mobil	1	1	1
102	<i>Crioceris quinquepunctata</i>	Chrysomelidae	Chrysomeloidea	Cucujiformia	Polyphaga	Phyto	Open	Herb	Cont	Fragm	Warm	Sex	Med	Mobil	1	1	1
103	<i>Cryptocephalus bameuli</i>	Chrysomelidae	Chrysomeloidea	Cucujiformia	Polyphaga	Phyto	Open	Herb	Cont	Wide	Neut	Sex	Small	Mobil	0	0	0
104	<i>Cryptocephalus bipunctatus</i>	Chrysomelidae	Chrysomeloidea	Cucujiformia	Polyphaga	Phyto	Ubiq	Herb	Temp	Wide	Neut	Sex	Med	Mobil	0	0	0
105	<i>Cryptocephalus flavipes</i>	Chrysomelidae	Chrysomeloidea	Cucujiformia	Polyphaga	Phyto	Ubiq	Herb	Cont	Wide	Warm	Sex	Small	Mobil	0	0	0
106	<i>Cryptocephalus hypochoeridis</i>	Chrysomelidae	Chrysomeloidea	Cucujiformia	Polyphaga	Phyto	Open	Herb	Temp	Wide	Neut	Sex	Med	Mobil	1	1	0
107	<i>Cryptocephalus moraei</i>	Chrysomelidae	Chrysomeloidea	Cucujiformia	Polyphaga	Phyto	Open	Herb	Temp	Wide	Neut	Sex	Small	Mobil	0	0	0
108	<i>Cryptocephalus quadripustulatus</i>	Chrysomelidae	Chrysomeloidea	Cucujiformia	Polyphaga	Phyto	Forest	Herb	Temp	Wide	Neut	Sex	Small	Mobil	0	0	0
109	<i>Cryptocephalus sericeus</i>	Chrysomelidae	Chrysomeloidea	Cucujiformia	Polyphaga	Phyto	Open	Herb	Cont	Wide	Neut	Sex	Med	Mobil	0	0	0
110	<i>Cryptocephalus signatifrons</i>	Chrysomelidae	Chrysomeloidea	Cucujiformia	Polyphaga	Phyto	Ubiq	Herb	Medit	Wide	Warm	Sex	Small	Mobil	0	0	0
111	<i>Cryptocephalus violaceus</i>	Chrysomelidae	Chrysomeloidea	Cucujiformia	Polyphaga	Phyto	Ubiq	Herb	Cont	Wide	Warm	Sex	Med	Mobil	0	0	0
112	<i>Cyanapion afer</i>	Apionidae	Curculionoidea	Cucujiformia	Polyphaga	Phyto	Open	Herb	Temp	Fragm	Neut	Sex	Small	Mobil	1	1	1
113	<i>Cyanapion gnarum</i>	Apionidae	Curculionoidea	Cucujiformia	Polyphaga	Phyto	Open	Herb	Temp	Fragm	Neut	Sex	Small	Mobil	0	0	0
114	<i>Cyanapion gyllenhalii</i>	Apionidae	Curculionoidea	Cucujiformia	Polyphaga	Phyto	Open	Herb	Temp	Wide	Neut	Sex	Small	Mobil	1	1	1
115	<i>Cyanapion platalea</i>	Apionidae	Curculionoidea	Cucujiformia	Polyphaga	Phyto	Open	Herb	Temp	Wide	Neut	Sex	Small	Mobil	0	0	0
116	<i>Cyanapion columbinum</i>	Apionidae	Curculionoidea	Cucujiformia	Polyphaga	Phyto	Open	Herb	Temp	Wide	Neut	Sex	Small	Mobil	0	0	0
117	<i>Cyanapion spencii</i>	Apionidae	Curculionoidea	Cucujiformia	Polyphaga	Phyto	Open	Herb	Temp	Wide	Neut	Sex	Small	Mobil	1	1	1
118	<i>Dacne bipustulata</i>	Erotylidae	Cucujoidea	Cucujiformia	Polyphaga	Myceto	Forest	Fungi	Temp	Wide	Neut	Sex	Small	Mobil	0	0	0
119	<i>Dacne rufifrons</i>	Erotylidae	Cucujoidea	Cucujiformia	Polyphaga	Myceto	Forest	Fungi	Temp	Wide	Neut	Sex	Small	Mobil	1	1	0
120	<i>Dalopius marginatus</i>	Elateridae	Elateroidea	Elateriformia	Polyphaga	Pred	Ubiq	Epig	Temp	Wide	Neut	Sex	Med	Mobil	0	0	0
121	<i>Dascillus cervinus</i>	Dascillidae	Dascilloidea	Elateriformia	Polyphaga	Phyto	Open	Herb	Mount	Wide	Neut	Sex	Med	Mobil	0	0	0
122	<i>Dasytes plumbeus</i>	Dasytidae	Clerioidea	Cucujiformia	Polyphaga	Pred	Ubiq	Xylo	Temp	Wide	Neut	Sex	Med	Mobil	0	0	0
123	<i>Deporaus betulae</i>	Rhynchitidae	Curculionoidea	Cucujiformia	Polyphaga	Phyto	Ubiq	Herb	Temp	Wide	Neut	Sex	Small	Mobil	0	0	0
124	<i>Dermestes lardarius</i>	Dermestidae	Bostrichoidea	Bostrichiformia	Polyphaga	Sapro	Ubiq	Necro	Temp	Wide	Neut	Sex	Med	Mobil	0	0	0
125	<i>Derocrepis rufipes</i>	Chrysomelidae	Chrysomeloidea	Cucujiformia	Polyphaga	Phyto	Open	Herb	Temp	Wide	Neut	Sex	Small	Mobil	0	0	0
126	<i>Dieperis boleti</i>	Tenebrionidae	Tenebrionoidea	Cucujiformia	Polyphaga	Myceto	Forest	Fungi	Temp	Wide	Neut	Sex	Med	Mobil	0	0	0

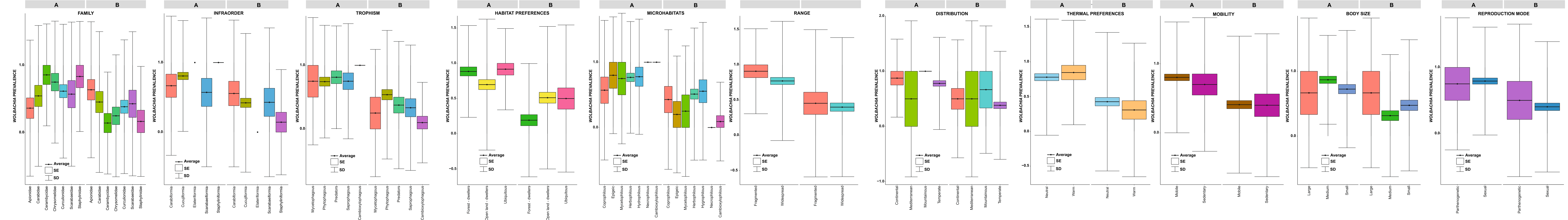
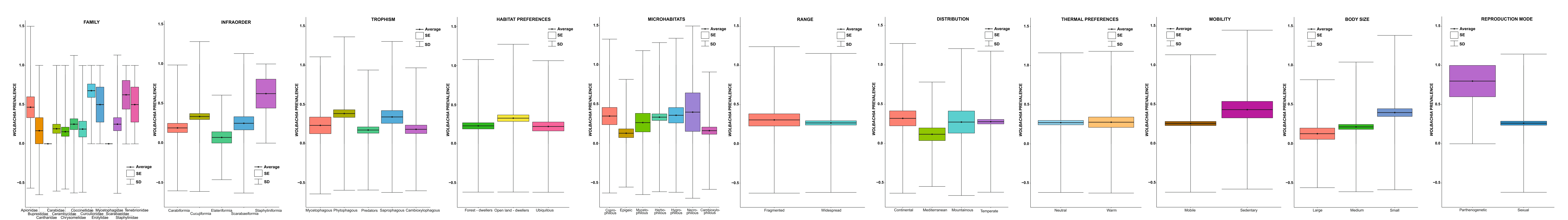
127	<i>Dinoptera collaris</i>	Cerambycidae	Chrysomeloidea	Cucujiformia	Polyphaga	Wood	Forest	Xylo	Temp	Wide	Neut	Sex	Med	Mobil	0	0	0
128	<i>Dolichosoma lineare</i>	Dasytidae	Cleroidea	Cucujiformia	Polyphaga	Pred	Open	Herb	Cont	Wide	Warm	Sex	Med	Mobil	0	0	0
129	<i>Dorcus parallelipedus</i>	Lucanidae	Scarabaeoidea	Scarabaeiformia	Polyphaga	Wood	Forest	Xylo	Medit	Wide	Warm	Sex	Large	Mobil	0	0	0
130	<i>Dromius agilis</i>	Carabidae	Caraboidea	Carabiformia	Adephaga	Pred	Forest	Xylo	Temp	Wide	Neut	Sex	Med	Mobil	1	1	0
131	<i>Dryocoetes autographus</i>	Curculionidae	Curculionoidea	Cucujiformia	Polyphaga	Wood	Forest	Xylo	Temp	Wide	Neut	Sex	Small	Mobil	0	0	0
132	<i>Drypta dentata</i>	Carabidae	Caraboidea	Carabiformia	Adephaga	Pred	Open	Epig	Medit	Fragm	Warm	Sex	Med	Mobil	0	0	0
133	<i>Dyschirius digitatus</i>	Carabidae	Caraboidea	Carabiformia	Adephaga	Pred	Open	Hydro	Temp	Fragm	Neut	Sex	Small	Mobil	0	0	0
134	<i>Elaphropus quadrisignatus</i>	Carabidae	Caraboidea	Carabiformia	Adephaga	Pred	Open	Hydro	Medit	Wide	Warm	Sex	Small	Mobil	0	0	0
135	<i>Elaphrus aureus</i>	Carabidae	Caraboidea	Carabiformia	Adephaga	Pred	Open	Hydro	Temp	Wide	Neut	Sex	Med	Mobil	0	0	0
136	<i>Elaphrus riparius</i>	Carabidae	Caraboidea	Carabiformia	Adephaga	Pred	Open	Hydro	Temp	Wide	Neut	Sex	Med	Mobil	0	0	0
137	<i>Etorofus pubescens</i>	Cerambycidae	Chrysomeloidea	Cucujiformia	Polyphaga	Wood	Forest	Xylo	Temp	Wide	Neut	Sex	Med	Mobil	1	1	0
138	<i>Euoniticellus fulvus</i>	Scarabaeidae	Scarabaeoidea	Scarabaeiformia	Polyphaga	Sapro	Open	Copro	Cont	Fragm	Warm	Sex	Med	Mobil	0	0	0
139	<i>Eusomus ovulum</i>	Curculionidae	Curculionoidea	Cucujiformia	Polyphaga	Phyto	Open	Herb	Cont	Wide	Warm	Parth	Med	Seden	1	1	0
140	<i>Eutrichapion melancholicum</i>	Apionidae	Curculionoidea	Cucujiformia	Polyphaga	Phyto	Open	Herb	Temp	Wide	Neut	Sex	Small	Mobil	0	0	0
141	<i>Eutrichapion viciae</i>	Apionidae	Curculionoidea	Cucujiformia	Polyphaga	Phyto	Open	Herb	Temp	Wide	Neut	Sex	Small	Mobil	0	0	0
142	<i>Exochomus quadripustulatus</i>	Coccinellidae	Cucujoidea	Cucujiformia	Polyphaga	Pred	Forest	Herb	Temp	Wide	Neut	Sex	Med	Mobil	0	0	0
143	<i>Galeruca tanacetii</i>	Chrysomelidae	Chrysomeloidea	Cucujiformia	Polyphaga	Phyto	Open	Herb	Temp	Wide	Neut	Sex	Med	Mobil	0	0	0
144	<i>Galerucella tenella</i>	Chrysomelidae	Chrysomeloidea	Cucujiformia	Polyphaga	Phyto	Open	Herb	Temp	Wide	Neut	Sex	Small	Mobil	0	0	0
145	<i>Gnaptor spinimanus</i>	Tenebrionidae	Tenebrionoidea	Cucujiformia	Polyphaga	Phyto	Open	Epig	Cont	Fragm	Warm	Sex	Large	Seden	0	0	0
146	<i>Harpalus affinis</i>	Carabidae	Caraboidea	Carabiformia	Adephaga	Pred	Open	Epig	Temp	Wide	Neut	Sex	Med	Mobil	0	0	0
147	<i>Harpalus rufipes</i>	Carabidae	Caraboidea	Carabiformia	Adephaga	Pred	Open	Epig	Temp	Wide	Neut	Sex	Med	Mobil	0	0	0
148	<i>Hippodamia variegata</i>	Coccinellidae	Cucujoidea	Cucujiformia	Polyphaga	Pred	Open	Herb	Temp	Wide	Neut	Sex	Med	Mobil	0	0	0
149	<i>Hylobius abietis</i>	Curculionidae	Curculionoidea	Cucujiformia	Polyphaga	Wood	Forest	Herb	Temp	Wide	Neut	Sex	Med	Mobil	1	1	0
150	<i>Hylotrupes bajulus</i>	Cerambycidae	Chrysomeloidea	Cucujiformia	Polyphaga	Wood	Ubiq	Xylo	Temp	Wide	Neut	Sex	Med	Mobil	0	0	0
151	<i>Ips typographus</i>	Curculionidae	Curculionoidea	Cucujiformia	Polyphaga	Wood	Forest	Xylo	Temp	Wide	Neut	Sex	Small	Mobil	0	0	0
152	<i>Kateretes pedicularius</i>	Nitidulidae	Cucujoidea	Cucujiformia	Polyphaga	Phyto	Open	Herb	Temp	Wide	Neut	Sex	Small	Mobil	0	0	0
153	<i>Lagria hirta</i>	Tenebrionidae	Tenebrionoidea	Cucujiformia	Polyphaga	Phyto	Ubiq	Herb	Temp	Wide	Neut	Sex	Med	Mobil	1	1	0
154	<i>Litargus connexus</i>	Mycetophagidae	Tenebrionoidea	Cucujiformia	Polyphaga	Myceto	Forest	Fungi	Temp	Wide	Neut	Sex	Small	Mobil	0	0	0
155	<i>Lixus filiformis</i>	Curculionidae	Curculionoidea	Cucujiformia	Polyphaga	Phyto	Open	Herb	Temp	Fragm	Warm	Sex	Med	Seden	0	0	0
156	<i>Lochmaea caprea</i>	Chrysomelidae	Chrysomeloidea	Cucujiformia	Polyphaga	Phyto	Ubiq	Herb	Temp	Wide	Neut	Sex	Med	Mobil	0	0	0
157	<i>Longitarsus exsoletus</i>	Chrysomelidae	Chrysomeloidea	Cucujiformia	Polyphaga	Phyto	Ubiq	Herb	Temp	Wide	Neut	Sex	Small	Mobil	0	0	0
158	<i>Longitarsus nasturtii</i>	Chrysomelidae	Chrysomeloidea	Cucujiformia	Polyphaga	Phyto	Ubiq	Herb	Temp	Wide	Neut	Sex	Small	Mobil	0	0	0
159	<i>Loricera pilicornis</i>	Carabidae	Caraboidea	Carabiformia	Adephaga	Pred	Open	Hydro	Temp	Wide	Neut	Sex	Med	Mobil	0	0	0
160	<i>Luperus flavipes</i>	Chrysomelidae	Chrysomeloidea	Cucujiformia	Polyphaga	Phyto	Forest	Herb	Temp	Wide	Neut	Sex	Small	Mobil	1	1	0
161	<i>Luperus luperus</i>	Chrysomelidae	Chrysomeloidea	Cucujiformia	Polyphaga	Phyto	Forest	Herb	Temp	Wide	Neut	Sex	Small	Mobil	1	1	0

162	<i>Lygistopterus sanguineus</i>	Lycidae	Elateroidea	Elateriformia	Polyphaga	Sapro	Forest	Xylo	Temp	Wide	Neut	Sex	Med	Mobil	0	0	0
163	<i>Mecinus pascuorum</i>	Curculionidae	Curculionoidea	Cucujiformia	Polyphaga	Phyto	Open	Herb	Temp	Wide	Neut	Sex	Small	Mobil	1	0	1
164	<i>Melolontha melolontha</i>	Scarabaeidae	Scarabaeoidea	Scarabaeiformia	Polyphaga	Phyto	Ubiq	Herb	Temp	Wide	Neut	Sex	Large	Mobil	0	0	0
165	<i>Metacantharis discoidea</i>	Cantharidae	Elateroidea	Elateriformia	Polyphaga	Pred	Forest	Herb	Temp	Wide	Neut	Sex	Med	Mobil	0	0	0
166	<i>Monochamus galloprovincialis</i>	Cerambycidae	Chrysomeloidea	Cucujiformia	Polyphaga	Wood	Forest	Xylo	Temp	Wide	Neut	Sex	Large	Mobil	0	0	0
167	<i>Monochamus sartor</i>	Cerambycidae	Chrysomeloidea	Cucujiformia	Polyphaga	Wood	Forest	Xylo	Mount	Wide	Neut	Sex	Large	Mobil	1	1	1
168	<i>Monochamus sutor</i>	Cerambycidae	Chrysomeloidea	Cucujiformia	Polyphaga	Wood	Forest	Xylo	Mount	Wide	Neut	Sex	Large	Mobil	0	0	0
169	<i>Mordella brachyura</i>	Mordellidae	Tenebrionoidea	Cucujiformia	Polyphaga	Wood	Ubiq	Xylo	Temp	Wide	Neut	Sex	Med	Mobil	0	0	0
170	<i>Mordella holomelaena</i>	Mordellidae	Tenebrionoidea	Cucujiformia	Polyphaga	Wood	Forest	Xylo	Temp	Wide	Neut	Sex	Med	Mobil	0	0	0
171	<i>Musaria affinis</i>	Cerambycidae	Chrysomeloidea	Cucujiformia	Polyphaga	Phyto	Ubiq	Herb	Temp	Wide	Neut	Sex	Med	Mobil	0	0	0
172	<i>Mycetophagus ater</i>	Mycetophagidae	Tenebrionoidea	Cucujiformia	Polyphaga	Myceto	Forest	Fungi	Temp	Wide	Neut	Sex	Med	Mobil	0	0	0
173	<i>Mycetophagus multipunctatus</i>	Mycetophagidae	Tenebrionoidea	Cucujiformia	Polyphaga	Myceto	Forest	Fungi	Temp	Wide	Neut	Sex	Med	Mobil	0	0	0
174	<i>Mycetophagus piceus</i>	Mycetophagidae	Tenebrionoidea	Cucujiformia	Polyphaga	Myceto	Forest	Fungi	Temp	Wide	Neut	Sex	Med	Mobil	0	0	0
175	<i>Mycetophagus quadripustulatus</i>	Mycetophagidae	Tenebrionoidea	Cucujiformia	Polyphaga	Myceto	Forest	Fungi	Temp	Wide	Neut	Sex	Med	Mobil	0	0	0
176	<i>Myrrha octodecimguttata</i>	Coccinellidae	Cucujoidea	Cucujiformia	Polyphaga	Pred	Forest	Herb	Temp	Wide	Neut	Sex	Med	Mobil	1	1	0
177	<i>Neatus picipes</i>	Tenebrionidae	Tenebrionoidea	Cucujiformia	Polyphaga	Sapro	Forest	Xylo	Temp	Wide	Neut	Sex	Med	Mobil	0	0	0
178	<i>Nebria picicornis</i>	Carabidae	Caraboidea	Carabiformia	Adephaga	Pred	Open	Hydro	Mount	Fragm	Neut	Sex	Med	Mobil	1	1	0
179	<i>Neocoenorhinus germanicus</i>	Rhynchitidae	Curculionoidea	Cucujiformia	Polyphaga	Phyto	Open	Herb	Temp	Wide	Neut	Sex	Small	Mobil	1	0	1
180	<i>Nedyus quadrimaculatus</i>	Curculionidae	Curculionoidea	Cucujiformia	Polyphaga	Phyto	Ubiq	Herb	Temp	Wide	Neut	Sex	Small	Mobil	1	1	0
181	<i>Nicrophorus vespilloides</i>	Silphidae	Staphylinoidea	Staphyliniformia	Polyphaga	Sapro	Ubiq	Necro	Temp	Wide	Neut	Sex	Med	Mobil	1	1	0
182	<i>Nivellia sanguinosa</i>	Cerambycidae	Chrysomeloidea	Cucujiformia	Polyphaga	Wood	Forest	Xylo	Mount	Fragm	Neut	Sex	Med	Mobil	0	0	0
183	<i>Notiophilus biguttatus</i>	Carabidae	Caraboidea	Carabiformia	Adephaga	Pred	Forest	Epig	Temp	Wide	Neut	Sex	Small	Mobil	0	0	0
184	<i>Notoxus monoceros</i>	Anthicidae	Tenebrionoidea	Cucujiformia	Polyphaga	Sapro	Ubiq	Herb	Temp	Wide	Neut	Sex	Small	Mobil	1	1	1
185	<i>Obrium brunneum</i>	Cerambycidae	Chrysomeloidea	Cucujiformia	Polyphaga	Wood	Forest	Xylo	Temp	Wide	Neut	Sex	Small	Mobil	0	0	0
186	<i>Ocyopus olens</i>	Staphylinidae	Staphylinoidea	Staphyliniformia	Polyphaga	Pred	Forest	Epig	Temp	Wide	Neut	Sex	Large	Mobil	0	0	0
187	<i>Oedemera femorata</i>	Oedemeridae	Tenebrionoidea	Cucujiformia	Polyphaga	Phyto	Open	Herb	Temp	Wide	Neut	Sex	Med	Mobil	0	0	0
188	<i>Oedemera flavipes</i>	Oedemeridae	Tenebrionoidea	Cucujiformia	Polyphaga	Phyto	Open	Herb	Medit	Wide	Warm	Sex	Med	Mobil	0	0	0
189	<i>Oenopia conglobata</i>	Coccinellidae	Cucujoidea	Cucujiformia	Polyphaga	Pred	Forest	Herb	Temp	Wide	Neut	Sex	Small	Mobil	0	0	0
190	<i>Oiceoptoma thoracica</i>	Silphidae	Staphylinoidea	Staphyliniformia	Polyphaga	Sapro	Forest	Necro	Temp	Wide	Neut	Sex	Med	Mobil	1	1	0
191	<i>Omalisus fontisbellaquaei</i>	Omalisidae	Elateroidea	Elateriformia	Polyphaga	Pred	Open	Herb	Temp	Wide	Neut	Sex	Med	Mobil	0	0	0
192	<i>Omonadus floralis</i>	Anthicidae	Tenebrionoidea	Cucujiformia	Polyphaga	Sapro	Open	Herb	Temp	Wide	Neut	Sex	Small	Mobil	0	0	0
193	<i>Omophron limbatum</i>	Carabidae	Caraboidea	Carabiformia	Adephaga	Pred	Open	Hydro	Temp	Wide	Neut	Sex	Med	Mobil	0	0	0
194	<i>Onthophagus fracticornis</i>	Scarabaeidae	Scarabaeoidea	Scarabaeiformia	Polyphaga	Sapro	Open	Copro	Temp	Wide	Neut	Sex	Med	Mobil	1	1	0
195	<i>Onthophagus ovatus</i>	Scarabaeidae	Scarabaeoidea	Scarabaeiformia	Polyphaga	Sapro	Open	Copro	Temp	Wide	Warm	Sex	Med	Mobil	0	0	0
196	<i>Onthophagus ruficapillus</i>	Scarabaeidae	Scarabaeoidea	Scarabaeiformia	Polyphaga	Sapro	Open	Copro	Temp	Wide	Neut	Sex	Med	Mobil	1	1	0

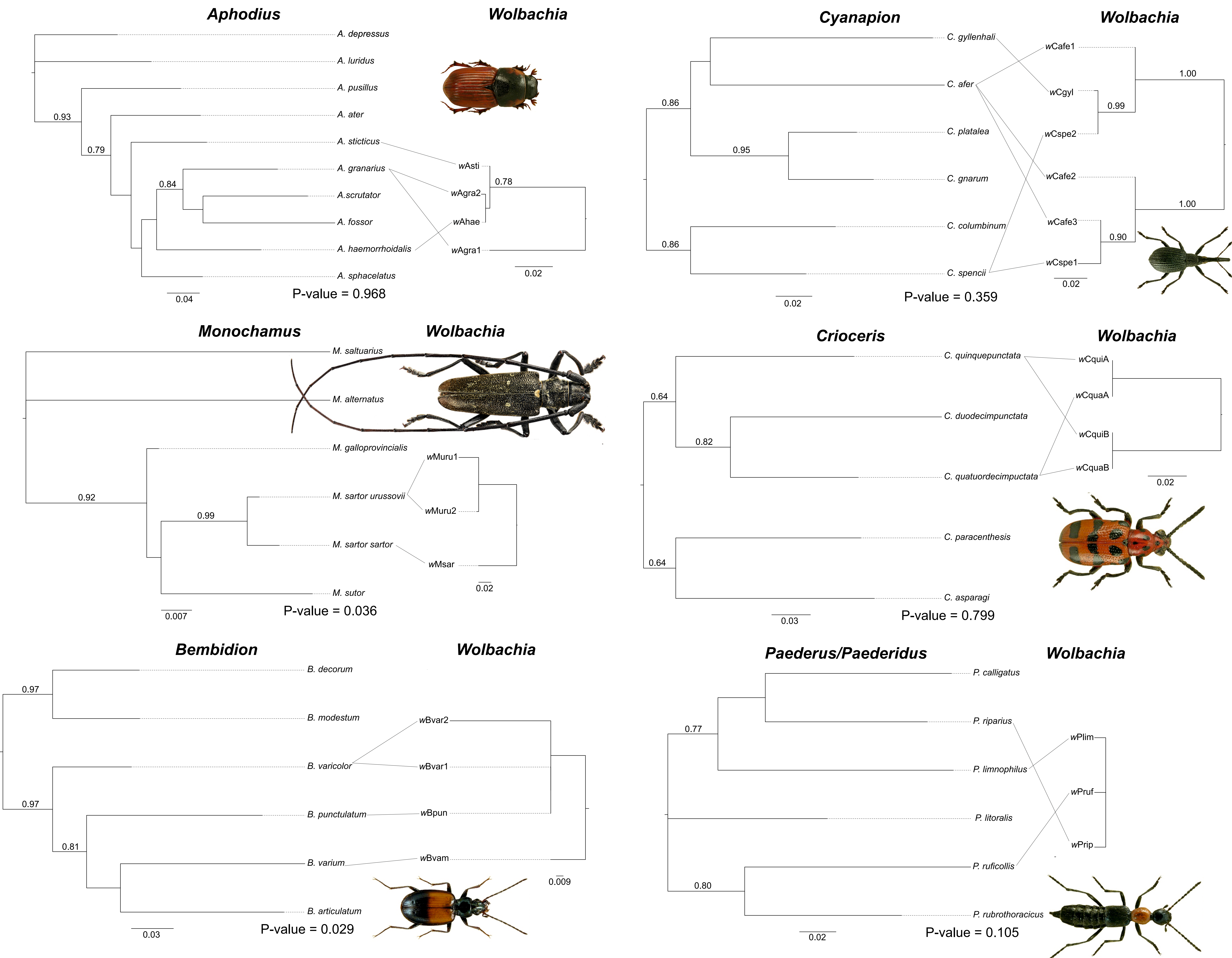
197	<i>Onthophagus similis</i>	Scarabaeidae	Scarabaeoidea	Scarabaeiformia	Polyphaga	Sapro	Open	Copro	Cont	Fragm	Warm	Sex	Med	Mobil	1	1	0
198	<i>Onthophagus taurus</i>	Scarabaeidae	Scarabaeoidea	Scarabaeiformia	Polyphaga	Sapro	Open	Copro	Cont	Fragm	Warm	Sex	Med	Mobil	1	1	0
199	<i>Ophonus laticollis</i>	Carabidae	Caraboidea	Carabiformia	Adephaga	Pred	Open	Epig	Temp	Wide	Neut	Sex	Med	Mobil	0	0	0
200	<i>Otiorhynchus perdix</i>	Curculionidae	Curculionoidea	Cucujiformia	Polyphaga	Phyto	Forest	Herb	Mount	Fragm	Neut	Parth	Med	Seden	0	0	0
201	<i>Otiorhynchus riessi</i>	Curculionidae	Curculionoidea	Cucujiformia	Polyphaga	Phyto	Forest	Herb	Mount	Fragm	Neut	Sex	Med	Seden	0	0	0
202	<i>Oulema gallaeciana</i>	Chrysomelidae	Chrysomeloidea	Cucujiformia	Polyphaga	Phyto	Open	Herb	Temp	Wide	Neut	Sex	Small	Mobil	0	0	0
203	<i>Oxymirus cursor</i>	Cerambycidae	Chrysomeloidea	Cucujiformia	Polyphaga	Wood	Forest	Xylo	Temp	Wide	Neut	Sex	Large	Mobil	0	0	0
204	<i>Oxythyrea funesta</i>	Scarabaeidae	Scarabaeoidea	Scarabaeiformia	Polyphaga	Phyto	Open	Herb	Cont	Fragm	Warm	Sex	Med	Mobil	0	0	0
205	<i>Pachyta quadrimaculata</i>	Cerambycidae	Chrysomeloidea	Cucujiformia	Polyphaga	Wood	Forest	Epig	Temp	Wide	Neut	Sex	Med	Mobil	1	1	0
206	<i>Pachytodes cerambyciformis</i>	Cerambycidae	Chrysomeloidea	Cucujiformia	Polyphaga	Wood	Forest	Xylo	Temp	Wide	Neut	Sex	Med	Mobil	0	0	0
207	<i>Paederidus rubrothoracicus</i>	Staphylinidae	Staphylinidea	Staphyliniformia	Polyphaga	Pred	Open	Hydro	Temp	Wide	Neut	Sex	Med	Mobil	0	0	0
208	<i>Paederidus ruficollis</i>	Staphylinidae	Staphylinidea	Staphyliniformia	Polyphaga	Pred	Open	Hydro	Temp	Wide	Neut	Sex	Med	Mobil	1	1	0
209	<i>Paederus caligatus</i>	Staphylinidae	Staphylinidea	Staphyliniformia	Polyphaga	Pred	Open	Hydro	Temp	Wide	Neut	Sex	Med	Mobil	0	0	0
210	<i>Paederus limnophilus</i>	Staphylinidae	Staphylinidea	Staphyliniformia	Polyphaga	Pred	Open	Hydro	Temp	Wide	Neut	Sex	Med	Mobil	1	1	0
211	<i>Paederus litoralis</i>	Staphylinidae	Staphylinidea	Staphyliniformia	Polyphaga	Pred	Open	Hydro	Temp	Wide	Neut	Sex	Med	Mobil	1	1	0
212	<i>Paederus riparius</i>	Staphylinidae	Staphylinidea	Staphyliniformia	Polyphaga	Pred	Open	Hydro	Temp	Wide	Neut	Sex	Med	Mobil	1	1	1
213	<i>Paophilus afflatus</i>	Curculionidae	Curculionoidea	Cucujiformia	Polyphaga	Phyto	Open	Herb	Temp	Fragm	Warm	Sex	Small	Seden	1	1	0
214	<i>Paradromius linearis</i>	Carabidae	Caraboidea	Carabiformia	Adephaga	Pred	Open	Epig	Cont	Wide	Warm	Sex	Med	Mobil	0	0	0
215	<i>Parafoucartia squamulata</i>	Curculionidae	Curculionoidea	Cucujiformia	Polyphaga	Phyto	Open	Herb	Temp	Wide	Warm	Sex	Small	Seden	1	1	0
216	<i>Paranchus albipes</i>	Carabidae	Caraboidea	Carabiformia	Adephaga	Pred	Open	Hydro	Temp	Wide	Neut	Sex	Med	Mobil	0	0	0
217	<i>Perileptus areolatus</i>	Carabidae	Caraboidea	Carabiformia	Adephaga	Pred	Open	Hydro	Temp	Wide	Neut	Sex	Small	Mobil	0	0	0
218	<i>Phosphuga atrata</i>	Silphidae	Staphylinidea	Staphyliniformia	Polyphaga	Pred	Ubiq	Epig	Temp	Wide	Neut	Sex	Med	Mobil	0	0	0
219	<i>Phyllobius brevis</i>	Curculionidae	Curculionoidea	Cucujiformia	Polyphaga	Phyto	Open	Herb	Temp	Wide	Neut	Sex	Small	Mobil	0	0	0
220	<i>Phyllobius glaucus</i>	Curculionidae	Curculionoidea	Cucujiformia	Polyphaga	Phyto	Forest	Herb	Temp	Wide	Neut	Sex	Med	Mobil	1	1	1
221	<i>Phyllobius maculicornis</i>	Curculionidae	Curculionoidea	Cucujiformia	Polyphaga	Phyto	Ubiq	Herb	Temp	Wide	Neut	Sex	Small	Mobil	1	1	1
222	<i>Phyllopertha horticola</i>	Scarabaeidae	Scarabaeoidea	Scarabaeiformia	Polyphaga	Phyto	Ubiq	Herb	Temp	Wide	Neut	Sex	Med	Mobil	0	0	0
223	<i>Phyllotreta christinae</i>	Chrysomelidae	Chrysomeloidea	Cucujiformia	Polyphaga	Phyto	Open	Herb	Medit	Fragm	Neut	Sex	Small	Mobil	0	0	0
224	<i>Phymatodes testaceus</i>	Cerambycidae	Chrysomeloidea	Cucujiformia	Polyphaga	Wood	Forest	Xylo	Temp	Wide	Neut	Sex	Med	Mobil	0	0	0
225	<i>Pidonia lurida</i>	Cerambycidae	Chrysomeloidea	Cucujiformia	Polyphaga	Wood	Forest	Xylo	Mount	Wide	Neut	Sex	Med	Mobil	0	0	0
226	<i>Pityogenes chalcographus</i>	Curculionidae	Curculionoidea	Cucujiformia	Polyphaga	Wood	Forest	Xylo	Temp	Wide	Neut	Sex	Small	Mobil	1	1	0
227	<i>Plagionotus detritus</i>	Cerambycidae	Chrysomeloidea	Cucujiformia	Polyphaga	Wood	Forest	Xylo	Temp	Wide	Neut	Sex	Med	Mobil	0	0	0
228	<i>Platynus assimilis</i>	Carabidae	Caraboidea	Carabiformia	Adephaga	Pred	Forest	Epig	Temp	Wide	Neut	Sex	Med	Mobil	0	0	0
229	<i>Poecilus versicolor</i>	Carabidae	Caraboidea	Carabiformia	Adephaga	Pred	Open	Epig	Temp	Wide	Neut	Sex	Med	Mobil	0	0	0
230	<i>Polydrusus mollis</i>	Curculionidae	Curculionoidea	Cucujiformia	Polyphaga	Phyto	Ubiq	Herb	Temp	Wide	Neut	Parth	Med	Mobil	1	1	1
231	<i>Polydrusus inustus</i>	Curculionidae	Curculionoidea	Cucujiformia	Polyphaga	Phyto	Open	Herb	Cont	Fragm	Warm	Parth	Small	Seden	1	1	0

232	<i>Prionus coriarius</i>	Cerambycidae	Chrysomeloidea	Cucujiformia	Polyphaga	Wood	Forest	Epig	Temp	Wide	Neut	Sex	Med	Mobil	0	0	0
233	<i>Propylea quatuordecimpunctata</i>	Coccinellidae	Cucujoidea	Cucujiformia	Polyphaga	Pred	Ubiq	Herb	Temp	Wide	Neut	Sex	Small	Mobil	0	0	0
234	<i>Pseudomechoris aethiops</i>	Rhynchitidae	Curculionoidea	Cucujiformia	Polyphaga	Phyto	Open	Herb	Medit	Fragm	Warm	Sex	Small	Mobil	0	0	0
235	<i>Pseudoperapion ergenense</i>	Apionidae	Curculionoidea	Cucujiformia	Polyphaga	Phyto	Open	Herb	Temp	Wide	Neut	Sex	Small	Mobil	1	0	1
236	<i>Pseudovadonia livida</i>	Cerambycidae	Chrysomeloidea	Cucujiformia	Polyphaga	Myceto	Open	Fungi	Temp	Wide	Neut	Sex	Med	Mobil	0	0	0
237	<i>Psyllobora vigintiduopunctata</i>	Coccinellidae	Cucujoidea	Cucujiformia	Polyphaga	Myceto	Ubiq	Fungi	Temp	Wide	Neut	Sex	Small	Mobil	1	1	0
238	<i>Pterostichus melanarius</i>	Carabidae	Caraboidea	Carabiformia	Adephaga	Pred	Ubiq	Epig	Temp	Wide	Neut	Sex	Med	Mobil	0	0	0
239	<i>Pterostichus niger</i>	Carabidae	Caraboidea	Carabiformia	Adephaga	Pred	Forest	Epig	Temp	Wide	Neut	Sex	Large	Mobil	0	0	0
240	<i>Pterostichus oblongopunctatus</i>	Carabidae	Caraboidea	Carabiformia	Adephaga	Pred	Forest	Epig	Temp	Wide	Neut	Sex	Med	Mobil	0	0	0
241	<i>Pyrochroa coccinea</i>	Pyrochroidae	Tenebrionoidea	Cucujiformia	Polyphaga	Pred	Forest	Xylo	Temp	Wide	Neut	Sex	Med	Mobil	0	0	0
242	<i>Pyrrhidium sanguineum</i>	Cerambycidae	Chrysomeloidea	Cucujiformia	Polyphaga	Wood	Forest	Xylo	Temp	Wide	Neut	Sex	Med	Mobil	0	0	0
243	<i>Pytho depressus</i>	Pythidae	Tenebrionoidea	Cucujiformia	Polyphaga	Wood	Forest	Xylo	Temp	Wide	Neut	Sex	Med	Mobil	0	0	0
244	<i>Rhagium inquisitor</i>	Cerambycidae	Chrysomeloidea	Cucujiformia	Polyphaga	Wood	Forest	Xylo	Temp	Wide	Neut	Sex	Med	Mobil	0	0	0
245	<i>Rhagium mordax</i>	Cerambycidae	Chrysomeloidea	Cucujiformia	Polyphaga	Wood	Forest	Xylo	Temp	Wide	Neut	Sex	Large	Mobil	0	0	0
246	<i>Rhagium sycophanta</i>	Cerambycidae	Chrysomeloidea	Cucujiformia	Polyphaga	Wood	Forest	Xylo	Temp	Wide	Warm	Sex	Med	Mobil	0	0	0
247	<i>Rhagonycha fulva</i>	Cantharidae	Elateroidea	Elateriformia	Polyphaga	Pred	Ubiq	Herb	Temp	Wide	Neut	Sex	Med	Mobil	0	0	0
248	<i>Rhagonycha lignosa</i>	Cantharidae	Elateroidea	Elateriformia	Polyphaga	Pred	Forest	Herb	Temp	Wide	Neut	Sex	Med	Mobil	0	0	0
249	<i>Rhagonycha limbata</i>	Cantharidae	Elateroidea	Elateriformia	Polyphaga	Pred	Ubiq	Herb	Temp	Wide	Neut	Sex	Med	Mobil	0	0	0
250	<i>Rhinusa tetra</i>	Curculionidae	Curculionoidea	Cucujiformia	Polyphaga	Phyto	Open	Herb	Temp	Wide	Neut	Sex	Small	Mobil	1	0	1
251	<i>Rhyzobius chrysomeloides</i>	Coccinellidae	Cucujoidea	Cucujiformia	Polyphaga	Pred	Forest	Herb	Temp	Wide	Neut	Sex	Small	Mobil	0	0	0
252	<i>Rusticoelytus rusticus</i>	Cerambycidae	Chrysomeloidea	Cucujiformia	Polyphaga	Wood	Forest	Xylo	Temp	Wide	Neut	Sex	Med	Mobil	0	0	0
253	<i>Rutpela maculata</i>	Cerambycidae	Chrysomeloidea	Cucujiformia	Polyphaga	Wood	Forest	Xylo	Temp	Wide	Neut	Sex	Large	Mobil	0	0	0
254	<i>Salpingus ruficollis</i>	Salpingidae	Tenebrionoidea	Cucujiformia	Polyphaga	Pred	Forest	Xylo	Temp	Wide	Neut	Sex	Small	Mobil	0	0	0
255	<i>Saperda scalaris</i>	Cerambycidae	Chrysomeloidea	Cucujiformia	Polyphaga	Wood	Forest	Xylo	Temp	Wide	Neut	Sex	Med	Mobil	0	0	0
256	<i>Schizotus pectinicornis</i>	Pyrochroidae	Tenebrionoidea	Cucujiformia	Polyphaga	Pred	Forest	Xylo	Temp	Wide	Neut	Sex	Med	Mobil	0	0	0
257	<i>Sciaphobus rubi</i>	Curculionidae	Curculionoidea	Cucujiformia	Polyphaga	Phyto	Open	Herb	Temp	Wide	Warm	Sex	Small	Seden	1	0	1
258	<i>Scymnus nigrinus</i>	Coccinellidae	Cucujoidea	Cucujiformia	Polyphaga	Pred	Forest	Herb	Temp	Wide	Neut	Sex	Small	Mobil	0	0	0
259	<i>Serropalpus barbatus</i>	Melandryidae	Tenebrionoidea	Cucujiformia	Polyphaga	Wood	Forest	Xylo	Temp	Wide	Neut	Sex	Large	Mobil	0	0	0
260	<i>Sibinia pellucens</i>	Curculionidae	Curculionoidea	Cucujiformia	Polyphaga	Phyto	Open	Herb	Temp	Wide	Neut	Sex	Small	Mobil	1	1	0
261	<i>Silis nitidula</i>	Cantharidae	Elateroidea	Elateriformia	Polyphaga	Pred	Ubiq	Herb	Temp	Wide	Neut	Sex	Med	Mobil	0	0	0
262	<i>Sitona suturalis</i>	Curculionidae	Curculionoidea	Cucujiformia	Polyphaga	Phyto	Open	Herb	Temp	Wide	Neut	Sex	Small	Mobil	1	0	1
263	<i>Sitona sulcifrons</i>	Curculionidae	Curculionoidea	Cucujiformia	Polyphaga	Phyto	Open	Herb	Temp	Wide	Neut	Sex	Small	Mobil	0	0	0
264	<i>Smaragdina affinis</i>	Chrysomelidae	Chrysomeloidea	Cucujiformia	Polyphaga	Phyto	Open	Herb	Temp	Wide	Neut	Sex	Small	Mobil	0	0	0
265	<i>Spermophagus sericeus</i>	Chrysomelidae	Chrysomeloidea	Cucujiformia	Polyphaga	Phyto	Open	Herb	Temp	Wide	Neut	Sex	Small	Mobil	0	0	0
266	<i>Sphidus dubius</i>	Sphindidae	Cucujoidea	Cucujiformia	Polyphaga	Myceto	Forest	Fungi	Temp	Wide	Neut	Sex	Med	Mobil	0	0	0

267	<i>Spondylis buprestoides</i>	Cerambycidae	Chrysomeloidea	Cucujiformia	Polyphaga	Wood	Forest	Epig	Temp	Wide	Neut	Sex	Large	Mobil	0	0	0
268	<i>Staphylinus erythropterus</i>	Staphylinidae	Staphylinioidea	Staphyliniformia	Polyphaga	Pred	Forest	Epig	Temp	Wide	Neut	Sex	Med	Mobil	1	1	0
269	<i>Stenolophus teutonius</i>	Carabidae	Caraboidea	Carabiformia	Adephaga	Pred	Open	Epig	Temp	Wide	Neut	Sex	Med	Mobil	0	0	0
270	<i>Stenomax aeneus</i>	Tenebrionidae	Tenebrionoidea	Cucujiformia	Polyphaga	Sapro	Forest	Xylo	Temp	Fragm	Neut	Sex	Med	Seden	1	1	0
271	<i>Stenurella melanura</i>	Cerambycidae	Chrysomeloidea	Cucujiformia	Polyphaga	Wood	Forest	Xylo	Temp	Wide	Neut	Sex	Med	Mobil	0	0	0
272	<i>Stenurella nigra</i>	Cerambycidae	Chrysomeloidea	Cucujiformia	Polyphaga	Wood	Forest	Xylo	Temp	Wide	Neut	Sex	Med	Mobil	0	0	0
273	<i>Strangalia attenuata</i>	Cerambycidae	Chrysomeloidea	Cucujiformia	Polyphaga	Wood	Forest	Xylo	Temp	Wide	Neut	Sex	Med	Mobil	0	0	0
274	<i>Strophosoma capitatum</i>	Curculionidae	Curculionoidea	Cucujiformia	Polyphaga	Phyto	Ubiq	Herb	Cont	Wide	Neut	Sex	Small	Seden	1	1	1
275	<i>Strophosoma faber</i>	Curculionidae	Curculionoidea	Cucujiformia	Polyphaga	Phyto	Open	Herb	Cont	Wide	Neut	Sex	Small	Seden	0	0	0
276	<i>Strophosoma melanogrammum</i>	Curculionidae	Curculionoidea	Cucujiformia	Polyphaga	Phyto	Ubiq	Herb	Cont	Wide	Neut	Parth	Small	Seden	1	0	1
277	<i>Synapion ebeninum</i>	Apionidae	Curculionoidea	Cucujiformia	Polyphaga	Phyto	Open	Herb	Temp	Wide	Neut	Sex	Small	Mobil	0	0	0
278	<i>Synuchus vivalis</i>	Carabidae	Caraboidea	Carabiformia	Adephaga	Pred	Ubiq	Epig	Temp	Wide	Neut	Sex	Med	Mobil	0	0	0
279	<i>Tachyta nana</i>	Carabidae	Caraboidea	Carabiformia	Adephaga	Pred	Forest	Xylo	Temp	Wide	Neut	Sex	Small	Mobil	0	0	0
280	<i>Tanymecus palliatus</i>	Curculionidae	Curculionoidea	Cucujiformia	Polyphaga	Phyto	Open	Herb	Temp	Wide	Neut	Sex	Small	Mobil	1	1	0
281	<i>Tenebrio molitor</i>	Tenebrionidae	Tenebrionoidea	Cucujiformia	Polyphaga	Sapro	Ubiq	Xylo	Temp	Wide	Neut	Sex	Med	Mobil	0	0	0
282	<i>Tetropium castaneum</i>	Cerambycidae	Chrysomeloidea	Cucujiformia	Polyphaga	Wood	Forest	Xylo	Temp	Wide	Neut	Sex	Small	Mobil	0	0	0
283	<i>Tetropium fuscum</i>	Cerambycidae	Chrysomeloidea	Cucujiformia	Polyphaga	Wood	Forest	Xylo	Temp	Wide	Neut	Sex	Med	Mobil	1	1	0
284	<i>Thanasimus formicarius</i>	Cleridae	Clerioidea	Cucujiformia	Polyphaga	Pred	Forest	Xylo	Temp	Wide	Neut	Sex	Med	Mobil	0	0	0
285	<i>Thanatophilus sinuatus</i>	Silphidae	Staphylinioidea	Staphyliniformia	Polyphaga	Sapro	Ubiq	Necro	Temp	Wide	Neut	Sex	Med	Mobil	0	0	0
286	<i>Trachys minuta</i>	Buprestidae	Buprestoidea	Elateriformia	Polyphaga	Phyto	Forest	Herb	Temp	Wide	Neut	Sex	Small	Mobil	1	1	0
287	<i>Trichodes apiarius</i>	Cleridae	Clerioidea	Cucujiformia	Polyphaga	Pred	Open	Epig	Medit	Wide	Warm	Sex	Med	Mobil	0	0	0
288	<i>Triplax aenea</i>	Erotylidae	Cucujoidea	Cucujiformia	Polyphaga	Myceto	Forest	Fungi	Temp	Wide	Neut	Sex	Small	Mobil	1	1	0
289	<i>Triplax russica</i>	Erotylidae	Cucujoidea	Cucujiformia	Polyphaga	Myceto	Forest	Fungi	Temp	Wide	Neut	Sex	Med	Mobil	0	0	0
290	<i>Tritoma bipustulata</i>	Erotylidae	Cucujoidea	Cucujiformia	Polyphaga	Myceto	Forest	Fungi	Temp	Wide	Neut	Sex	Small	Mobil	0	0	0
291	<i>Tropinota hirta</i>	Scarabaeidae	Scarabaeoidea	Scarabaeiformia	Polyphaga	Phyto	Open	Herb	Temp	Wide	Warm	Sex	Med	Mobil	0	0	0
292	<i>Trypocopris vernalis</i>	Geotrupidae	Scarabaeoidea	Scarabaeiformia	Polyphaga	Sapro	Ubiq	Copro	Temp	Wide	Neut	Sex	Large	Mobil	0	0	0
293	<i>Trypodendron lineatum</i>	Curculionidae	Curculionoidea	Cucujiformia	Polyphaga	Myceto	Forest	Xylo	Temp	Wide	Neut	Sex	Small	Mobil	0	0	0
294	<i>Tytthaspis sedecimpunctata</i>	Coccinellidae	Cucujoidea	Cucujiformia	Polyphaga	Myceto	Open	Herb	Medit	Wide	Neut	Sex	Small	Mobil	0	0	0
295	<i>Uleiota planata</i>	Silvanidae	Staphylinioidea	Staphyliniformia	Polyphaga	Sapro	Forest	Xylo	Temp	Wide	Neut	Sex	Med	Mobil	0	0	0
296	<i>Uloma culinaris</i>	Tenebrionidae	Tenebrionoidea	Cucujiformia	Polyphaga	Sapro	Forest	Xylo	Temp	Wide	Neut	Sex	Med	Seden	1	1	0
297	<i>Valgus hemipterus</i>	Scarabaeidae	Scarabaeoidea	Scarabaeiformia	Polyphaga	Wood	Ubiq	Herb	Temp	Wide	Neut	Sex	Med	Mobil	0	0	0



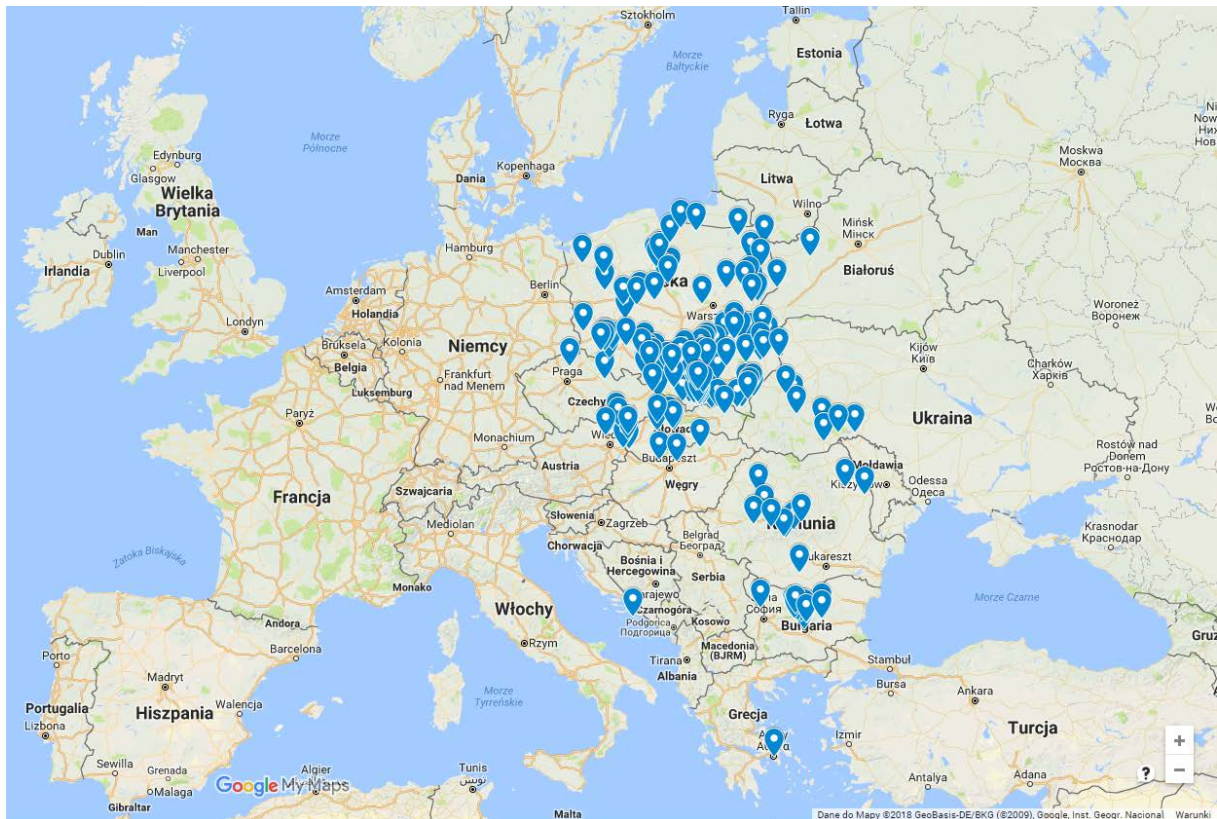
Supplementary Figure S1. Box plots illustrating differences in *Wolbachia* infection (upper panels) and prevalence of supgroups (lower panels) across taxonomic units of beetles (A) and ecological/biological traits of beetles (B).



Supplementary Figure S3. Phylogenetic trees of selected groups of beetles (reconstructed on the basis of *coxI* sequences) and *Wolbachia* strains (reconstructed on the basis of selected housekeeping genes from multilocus sequence typing system) with results of cospeciation tests (performed in Procrustean Approach to Cophylogeny). Photographs are reprinted from ICONOGRAPHIA COLEOPTERORUM POLONIAE under a CC BY license, with permission (© Copyright by Prof. Lech Borowiec, Wrocław 2007–2018, Department of Biodiversity and Evolutionary Taxonomy, University of Wrocław, Poland).

Supplementary File 1. Google file (kmz) with localization of sampling sites listed in Supplementary Table 4.

Data to map ©2018 GeoBasis-DE/BKG (© 2009) Google, Inst. Geogr.National.



Original kmz file available under following link:

https://drive.google.com/open?id=15yhgviGIAikY0EAKCeDbY_PdDlIbKMdQs&usp=sharing

Supplementary File 2. List of references to keys and handbooks used for beetle species identification and for collection of their ecological and biological traits used for statistical analyses.

Burakowski B., Mroczkowski M., Stefańska J. *Chrząszcze Coleoptera, Biegaczowate - Carabidae, część 1. Kat. Fauny Pol., Warszawa, XXIII, 2: 1-232 (1973).*

Burakowski B., Mroczkowski M., Stefańska J. *Chrząszcze Coleoptera – Biegaczowate – Carabidae, część 2. Katalog Fauny Polski, Warszawa, XXIII, 3: 1-430 (1974).*

Burakowski B., Mroczkowski M., Stefańska J. *Chrząszcze Coleoptera – Adephaga prócz Carabidae, Myxophaga, Polyphaga: Hydrophiloidea. Katalog Fauny Polski, Warszawa, XXIII, 4: 1-307 (1976).*

Burakowski B., Mroczkowski M., Stefańska J. *Chrząszcze Coleoptera, Histeroidea i Staphylinoidea prócz Staphylinidae. Katalog Fauny Polski, PWN, Warszawa, XXIII, 5: 1-356 (1978).*

Burakowski B., Mroczkowski M., Stefańska J. *Chrząszcze Coleoptera, Kusakowate – Staphylinidae, cz. 1. Katalog Fauny Polski, PWN, Warszawa, XXIII, 6: 1-310 (1979).*

Burakowski B., Mroczkowski M., Stefańska J. *Chrząszcze Coleoptera, Kusakowate – Staphylinidae, cz. 2. Katalog Fauny Polski, PWN, Warszawa, XXIII, 7: 1-272 (1980).*

Burakowski B., Mroczkowski M., Stefańska J. *Chrząszcze Coleoptera, Kusakowate – Staphylinidae, cz. 3: Aleocharinae. Katalog Fauny Polski, PWN, Warszawa, XXIII, 8: 1-330 (1981).*

Burakowski B., Mroczkowski M., Stefańska J. *Chrząszcze Coleoptera. Scarabaeoidea, Dascilloidea, Byrrhoidea i Parnoidea. Katalog Fauny Polski, Warszawa, XXIII, 9: 1-294 (1983).*

Burakowski B., Mroczkowski M., Stefańska J. *Chrząszcze Coleoptera. Buprestoidea, Elateroidea i Cantharoidea. Katalog Fauny Polski, Warszawa, XXIII, 10: 1-401 (1985).*

Burakowski B., Mroczkowski M., Stefańska J. *Chrząszcze Coleoptera – Dermestoidea, Bostrichoidea, Cleroidea i Lymexyloidea. Katalog Fauny Polski, Warszawa, XXIII, 11: 1-243 (1986a).*

- Burakowski B., Mroczkowski M., Stefańska J. *Chrząszcze Coleoptera – Cucujoidea, część 1. Katalog Fauny Polski*, Warszawa, XXIII, **12**: 1-266 (1986b).
- Burakowski B., Mroczkowski M., Stefańska J. *Chrząszcze Coleoptera – Cucujoidea, część 3. Katalog Fauny Polski*, Warszawa, XXIII, **14**: 1-309 (1987).
- Burakowski B., Mroczkowski M., Stefańska J. 1990. Chrząszcze Coleoptera. Cerambycidae i Bruchidae. *Katalog fauny Polski*, Warszawa, XXIII, **15**: 1-312 (1990).
- Burakowski B., Mroczkowski M., Stefańska J. *Chrząszcze Coleoptera. Stonkowate – Chrysomelidae, część 2. Katalog Fauny Polski*, Warszawa, XXIII, **17**: 1-227 (1991).
- Burakowski B., Mroczkowski M., Stefańska J. *Chrząszcze – Coleoptera. Ryjkowcowate prócz ryjkowców – Curculionioidea prócz Curculionidae. Katalog Fauny Polski*, Warszawa, XXIII, **18**: 1-324 (1992).
- Burakowski B., Mroczkowski M., Stefańska J. *Chrząszcze – Coleoptera, Ryjkowce – Curculionidae część 2. Katalog Fauny Polski*. MiIZ PAN, Warszawa, XXIII, **20**: 1-310 (1995).
- Burakowski B., Mroczkowski M., Stefańska J. *Chrząszcze – Coleoptera, Ryjkowce – Curculionidae część 3. Katalog Fauny Polski*. MiIZ PAN, Warszawa, XXIII, **21**: 1-307 (1997).
- Burakowski B., Mroczkowski M., Stefańska J. *Chrząszcze Coleoptera. Uzupełnienia tomów 2-21. Katalog Fauny Polski*. MiIZ PAN, Warszawa, XXIII, **22**: 1-252 (2000).
- Koch, K., 1989a: Die Käfer Mitteleuropas. Ökologie. Band 1. Goecke & Evers, Krefeld, 440 pp (1989a).
- Koch, K., 1989b: Die Käfer Mitteleuropas. Ökologie. Band 2. Goecke & Evers, Krefeld, 382 pp (1989b).
- Koch, K., 1992: Die Käfer Mitteleuropas. Ökologie. Band 3. Goecke & Evers, Krefeld, 389 pp (1992).
- Löbl I., Smetana A. (eds.). *Catalogue of Palaearctic Coleoptera. Vol. 1. Archostemata – Myxophaga – Adephaga*. Brill, Leiden Boston, 819 pp (2003).
- Löbl I., Smetana A. (eds.). *Catalogue of Palaearctic Coleoptera. Vol. 4. Elateroidea – Derodontoidea – Bostrichoidea – Lymexyloidea – Cleroidea – Cucujoidea*. Apollo Books, Stenstrup, 935 pp (2007).

Löbl I., Smetana A. (eds.). *Catalogue of Palaearctic Coleoptera. Vol. 5. Tenebrionoidea.*
Apollo Books, Stenstrup, 670 pp (2008).

Löbl I., Smetana A. (eds.). *Catalogue of Palaearctic Coleoptera. Vol. 6. Chrysomeloidea.*
Apollo Books, Stenstrup, 924 pp (2010).

Löbl I., Smetana A. (eds.). *Catalogue of Palaearctic Coleoptera. Vol. 7. Curculionoidea I.*
Apollo Books, Stenstrup, 373 pp (2011).

Löbl I., Smetana A. (eds.) *Catalogue of Palaearctic Coleoptera. Vol. 8. Curculionoidea II.*
Leiden, Brill, 700 pp (2013).